

# **Wilson High School**

## **Course Selection Process for the 2021-2022 school year**



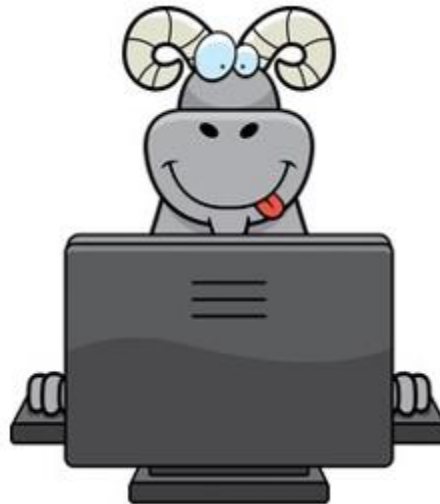
# Counselors

- Mr. Coleman
  - A-E
- Ms. Madison
  - F-Li
- Ms. Elsdon
  - Lo-Ri
- Ms. Daley
  - Ro-Z



# What will you learn today?

- Overview of graduation credit requirements
- Review of how to choose classes for next year
- How to Complete the Course Selection Sheet
- How to enter your course requests in HAC



# Graduation Credit Requirements

(Helpful Tip: 1.0 credit = 1 year of study = 2 semesters of study)

## **Graduation**

- English - 4 credits
- Social Studies - 3 credits
- Mathematics - 3 credits  
(through Alg. 2 A&B)
- Science - 3 credits
- \*World Language - 2 credits
- \*Art - 2 credits
- PE - 1.5 credits
- Health - 0.5 credit
- Occ. Ed. - 1 credit
- Electives - 4 credits

## **4 yr. College Admission**

- English - 4 credits
- Social Studies - 3 credits
- Mathematics - 3 credits  
(through Alg. 2 A&B)
- Science - 2 credits (at least  
1 credit Algebra based)
- World Language - 2 credits
- Arts - 1 credit
- Senior Year - at least 3  
credits from above, 1 of  
which must be Math or  
Alg. based Science

# So, lets start planning your schedule for next year!

- We will start with looking at what Math you should take
- Then what Science to take
- Then we will look at the rest of the graduation requirements and plan for what to take and when to take it!
- We will also give you sample “typical grade level schedules” that you can reference when planning what to take, but keep in mind, there is always individualized choice and need that comes into play that can influence when you take some of the requirements, so plan ahead and pace yourself based on your class needs and preferences year by year. Let’s get started.....

# What Math should I take

(3 credits of Math is required through second year Algebra)

- **Algebra 1 A&B** (grade 9 students or Summer School only)
  - **Geometry** (prerequisite - pass Algebra 1 A&B)
  - **Algebra 2 A&B** (prerequisite - pass Geometry A&B)
  - **Financial Algebra** (may be substituted for Alg. Alg 2 A&B)  
(Completion of three years of math through Alg 2 A&B or Fin. Alg. Completes math graduation credit requirements.)
- 
- **Trigonometry/Stats** (prerequisite - pass Paced Alg. 2A&B)
  - **Pre-Calculus (reg. or CIHS)** (prerequisite - pass regular Alg.2 A&B)
  - **Calculus (reg. or CIHS)** (prerequisite - pass Pre-Calculus)

# What Science should I take?

(3 credits of Science required)

- **Biology A&B (Grade 9)**
  - **Chemistry (Reg. or CIHS – Grade 10)**
  - **Physics A&B (Grade 11)**
- 
- **AP Physics** - (prerequisite - enrolled in Pre-Calculus or Calculus)
  - **AP Biology** - (prerequisite - passed Chemistry and evidence of AP readiness)
  - **AP Environmental Science** – (prerequisite - passed Biology and evidence of AP readiness)
  - **Plant Biology** – (prerequisite - needing another Science or elective)
  - **Marine Biology, Anatomy & Physiology, Astronomy** – (take as a core Science class or as a science elective)

# Additional class Requirements and Options

(reminder tip: 1.0 credit = 1 year = 2 semesters)

## English

- **1.0 credit of English every year** (You can choose AP Junior and Senior year)

## Social Studies

- **Optional** in Grade 9 –
- **World Hist or AP Euro Hist** -1.0 credit (Grade 10)
- **US or AP US History** -1.0 credit (Grade 11)
- **Civics / World Issues or AP Gov.** - 1.0 credit (Grade 12)

## Other Requirements

- **Health** – 0.5 credit (grade 10)
- **Fine Arts** – 2.0 credit (any sems.)
- **World Languages** – 2.0 credit (any 2-years in sequence)
- **Occ. Ed** (CTE) – 1.0 credit (any sems.)
- **PE** – 1.5 credit (any sems - can substitute Team Sports seasons for two of these semesters)

## Electives

- **See course selection sheets for options** - 4.0 credits (any semesters)
- Tip - ANY course may count as an elective when student has already earned the required number of credits in that subject area.



# Typical grade 9 schedule

- Semester 1
  - 1) English 9 A
  - 2) Math (your level) A
  - 3) Biology A
  - 4) World Lang. (your level) A or Elective
  - 5) Optional Social Studies or Elective
  - 6) Fine Arts, Occupational or PE
- Semester 2
  - 1) English 9 B
  - 2) Math B
  - 3) Biology B
  - 4) World Lang. B or Elective
  - 5) Optional Social Studies or Elective
  - 6) Fine Arts, Occupational or PE

# Typical grade 10 schedule

- 1) English10 A
  - 2) Math (your level) A
  - 3) Chemistry A
  - 4) World Hist or AP Euro. A
  - 5) World Language (your level) A or Elective
  - 6) Fine Arts, PE, Occupational
- 1) English 10 B
  - 2) Math B
  - 3) Chemistry B
  - 4) World Hist or AP Euro. B
  - 5) World Language B or Elective
  - 6) Health (could be first or second semester)

# Typical grade 11 Schedule

- 1) English 11 A
  - 2) Math (your Level) A
  - 3) Physics A
  - 4) US History A
  - 5 and 6) Self-selected courses that fulfill PE, Fine Arts, World Language, Health, Occupational or Elective graduation requirements and career pathway needs
- 1) English 11 B
  - 2) Math B
  - 3) Physics B
  - 4) US History B
  - 5 and 6) Self-selected courses that fulfill PE, Fine Arts, World Language, Health, Occupational or Elective graduation requirements and career pathway needs

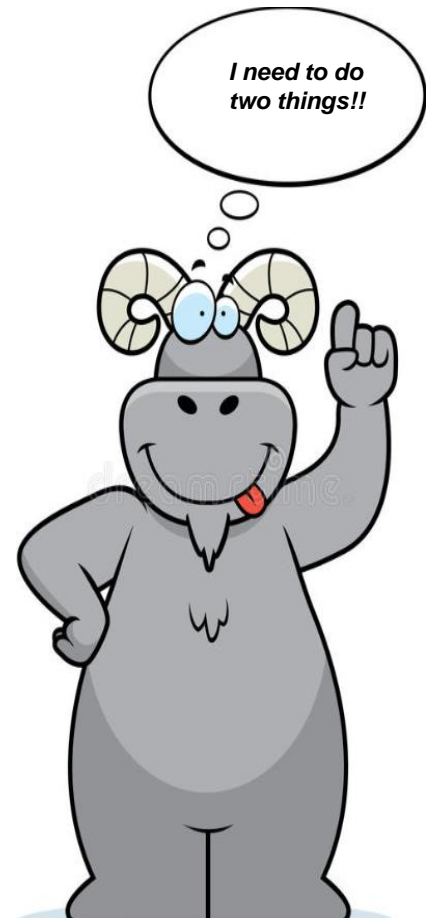
# Typical grade 12 schedule

- 1) English 12 A
  - 2) Math (req for 4-year college bound students)
  - 3) Science option A (or elective if science requirement is met)
  - 4) Civics/World Issues
  - 5 and 6) Self-selected/choice courses that fulfill PE, Fine Arts, World Language, Health, Occupational, Elective and career path needs
- 1) English 12 B
  - 2) Math (req. for 4-year college bound students)
  - 3) Science option B (or elective if science requirement is met)
  - 4) Civics/World Issues
  - 5 and 6) Self-selected/choice courses that fulfill PE, Fine Arts, World Language, Health, Occupational, Elective and career path needs

# Selecting Courses

## You need to complete two things!

- 1) Fill out your course selection sheet online to let us know what you want
- 2) Then, you need to enter those same courses in HAC the Home Access Center



***The first thing you need to do:*** Enter your course choices on the Course Selection Sheet online!

- On the Wilson Web page there is a link called Course Selection sheet. Select the form for the grade that you will be in next year.
- The form is easy and intuitive – select the 6 periods worth of classes that you would like next year, double-check your work and then click “Submit”
- When you submit this form with your course selections for next year it will be sent to your counselor so they can reference it if there is any scheduling questions over the Summer.
- The following four cells are samples of the Course selection form you will need to fill out.....

# Wilson Senior 2021/2022 Class of 2022 Course Request Sheet

4-year college bound students must take a Math or Math-based Science class in their senior year. Additionally, all seniors need to make sure to sign up for classes to meet/complete all course graduation requirements. See your counselor if you need any assistance.

STUDENTS ARE REQUIRED TO REQUEST 6 CLASSES PER SEMESTER  
(Student Assistants, Early and Late Arrivals and Work Experience Need Counselor Approval)  
Request will be accepted in late August 2021.

...

\* Required

1. Last Name \*

2. First Name \*

3. Student ID Number \*

4. Class Choice #1 \*

*Preferred English*

5. Class Choice #2 \*

*Social Studies Required Course*

- AP U.S. Gov't & Politics HCV403B
- World Issues & Civics HWP401B

# Wilson Junior 2021/2022 Class of 2023 Course Request Sheet

In addition to the listed courses, Juniors will typically start their World Language (2 years of World Language for 4 year college admission).

Ensure that you finish up your Fine Arts, Career and Technical Ed and P.E. credits.

STUDENTS ARE REQUIRED TO TAKE 6 CLASSES PER SEMESTER

...

\* Required

1. Last Name \*

2. First Name \*

3. Student ID Number \*

4. Class Choice #1 \*

*Preferred English*

- AP Literature / Composition LIT420B
- Media Lit / Speech & Debate LML401B
- Mythology / Science Fiction LRE422B
- Poetry / Creative Writing LPO401B
- Popular Lit / Literature Into Film LPL401B
- \*ELL Junior English (English as 2nd Language) LFL405B
- \*LRC Junior English (requires IEP) XLE505B
- \*LRC Written Expression (requires IEP) XLC422B



# Wilson Sophomore 2021/2022 Class of 2024 Course Request Sheet

In addition to the listed courses, Sophomores will typically choose a Fine Arts, World Language, Career and Technical Ed, PE and other courses in their career pathways.

STUDENTS ARE REQUIRED TO TAKE 6 CLASSES PER SEMESTER

\* Required

1. Last Name \*

2. First Name \*

3. Student ID Number \*

4. Class Choice #1 \*

*Preferred English*

*Courses with a "\*" require current teacher approval (initial next to course)*

- English 10 LEN430B
- \*ELL Sophomore English (English as 2nd Lang.) LFL403B
- \*LRC Sophomore English (requires IEP) XLE405B

5. Class Choice #2 \*

*Preferred Math*

- Geometry (prereq: Algebra 1B) MGE401B
- Algebra 2 (prereq: Geom 2) MAL403B
- Pre-Calculus (prereq: Alg. 2B) MCA401B
- Pre-Calculus (prereq: Algebra 2B), (tuition fee for college credit) MATH153B

# Wilson Freshmen 2021/2022

## Class of 2025

### Course Request Sheet

In addition to the listed courses, Freshmen will typically choose Fine Arts, World Language, Career and Technical Ed, P.E. and other courses in their career pathways.

STUDENTS ARE REQUIRED TO TAKE 6 CLASSES PER SEMESTER

1. Last Name \*

2. First Name \*

3. Student ID Number \*

4. Class Choice #1 \*

*Preferred English*

*Courses with a "\*" require current teacher approval*

- English 9 LFR401B
- \*ELL Freshman English (English as 2nd Language only) LFL401B
- \* LRC Freshman English (IEP required) XLE401B

## ***The second thing you need to do:***

### **Enter your courses choices into HAC!**

- 1) log in to your student HAC account
- 2) Click the “Classes” tab at the top
- 3) Select the “Requests” tab on the left, then.....
- 4) Subject by subject click “edit”, make/click your course selection then click “save” for each selection.
- 5) Each time you make a selection and click “Save” the total at the bottom will go up by 1.0 (if it is a year long class) or .5 (if it is a one-semester long class)
- 6) You are done when the total at the bottom reaches 6.
- Tip - make sure that you enter exactly what you selected on the course selection sheet and make sure the total at the bottom is at 6 when you are finished. If it is confusing, don't worry! just do you best! We double-check everything and will make any corrections needed. Don't try to enter “Alternative” courses – just reach 6 requested courses and you are done!

# Fabulous opportunities to get involved!

- Students who get involved with clubs or sports usually report more connection to the school, and have more opportunity to connect with friends and staff members.
- Check out the clubs, activities and sports opportunities on the Wilson High School Web Page. And ask other friends and students what they have found at Wilson! Get involved and get connected!



Links related to the registration process (or go to the Wilson High School Web page where they also appear)

- Power Point Registration Instructional Video
- Grade 9 Course Request Form
- Grade 10 Course Request Form
- Grade 11 Course Request Form
- Grade 12 Course Request Form
- Wilson High School Clubs and Activities
- Wilson High School Sports
- District Video on Entering Course Requests into HAC

If you need assistance or have questions, feel free to contact your student counselor!

- A-E - Mr. Coleman
  - [rcolema@Tacoma.k12.wa.us](mailto:rcolema@Tacoma.k12.wa.us)
  - 253-571-6134
- F-Li - Ms. Madison
  - [smadiso@Tacoma.k12.wa.us](mailto:smadiso@Tacoma.k12.wa.us)
  - 253-571-6136
- Lo-Ri - Ms. Elsdon
  - [kelsdon@Tacoma.k12.wa.us](mailto:kelsdon@Tacoma.k12.wa.us)
  - 253-571-6140
- Ro-Z - Ms. Daley
  - [adaley@Tacoma.k12.wa.ua](mailto:adaley@Tacoma.k12.wa.ua)
  - 253-571-6135



Ram Country!

