

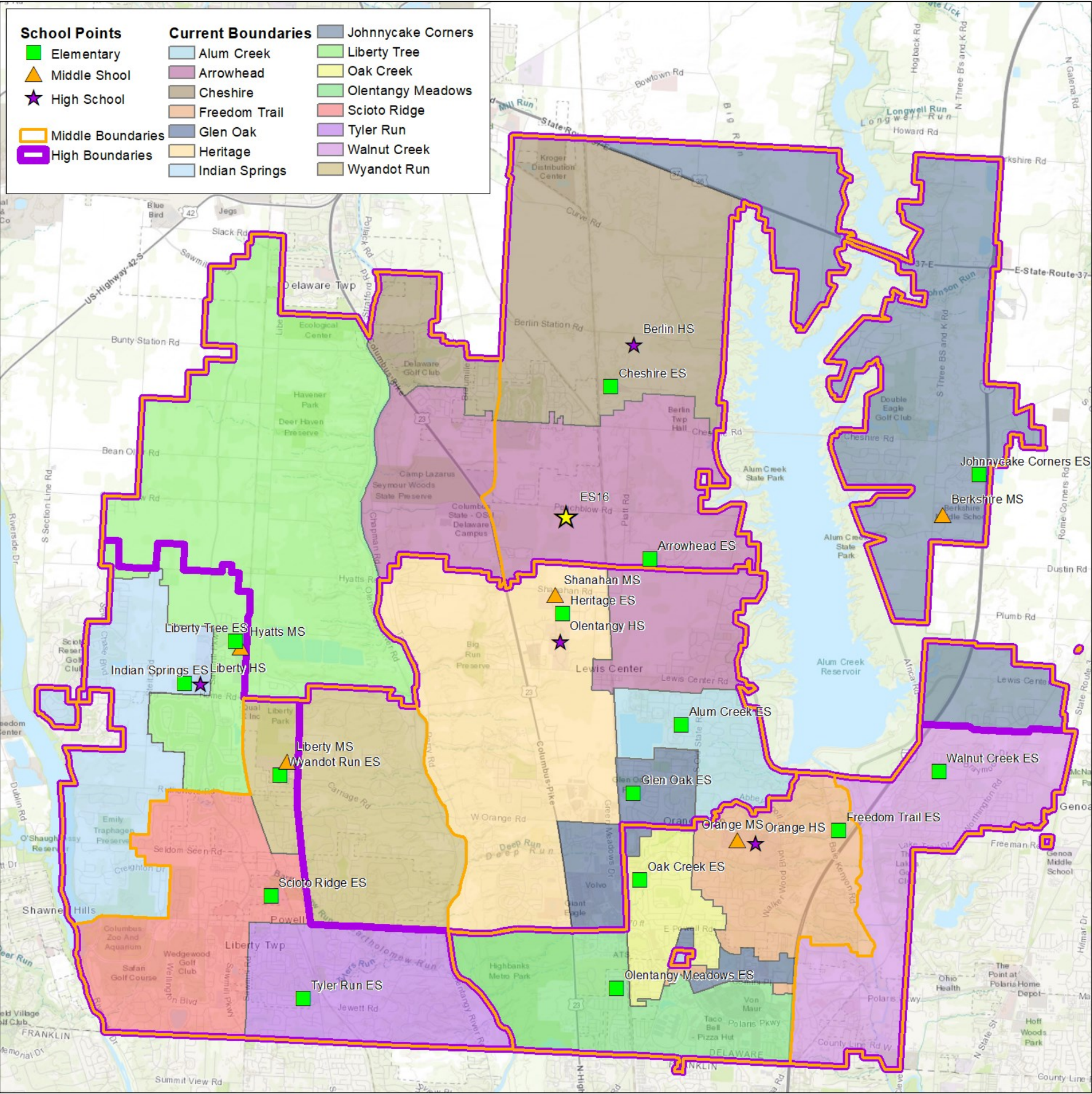
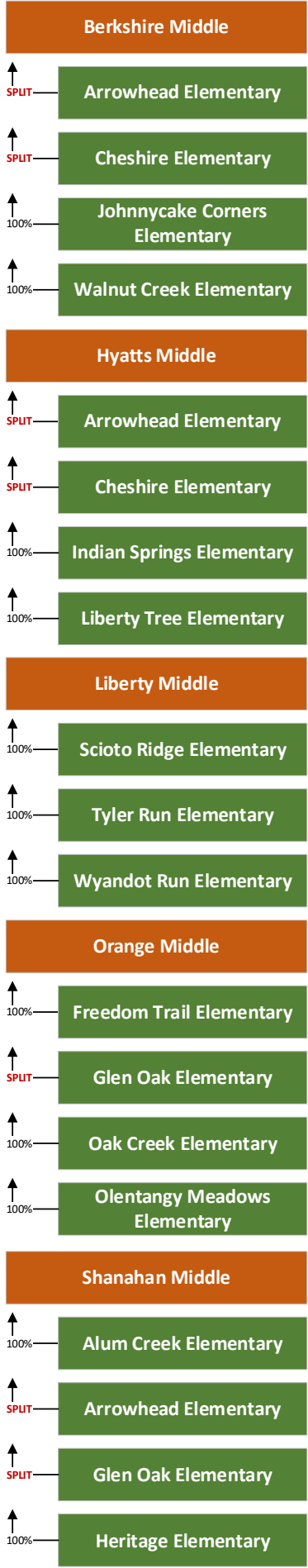
► CURRENT BOUNDARIES

The information on this page represents the current OLSD elementary, middle, and high school boundaries. The charts directly to the right show the elementary to middle school feeder patterns, and the table below illustrates the capacity, enrollment, and utilization, at each school building. Please note that high school boundaries are not being changed as a part of this process.

Elementary 16 will be located within the current Arrowhead Elementary boundary on Peachblow Road, approximately 1 mile west of the corner of Peachblow and Piatt Roads. It is shown as a yellow star in all maps within this document.

The following pages contain a series of boundary options for your review. Options are split between north and south; any north option can be combined with any south option. Middle school concepts for the northern part of the district are also being explored, and can be found at the end of this document. A more extensive middle school boundary process will take place when Middle School 6 is built in two years, and any change made to the middle schools as a part of the current process may be temporary. The elementary boundaries on the western side of the district (west of the Olentangy River/315) are unaffected in all options.

CURRENT			
Boundary	Capacity	Enroll	Util %
Alum Creek	725	467	64%
Arrowhead	725	688	95%
Cheshire	650	739	114%
Freedom Trail	650	589	91%
Glen Oak	650	672	103%
Heritage	650	697	107%
Indian Springs	650	534	82%
Johnnycake Corners	650	722	111%
Liberty Tree	650	603	93%
Oak Creek	650	675	104%
Olentangy Meadows	650	700	108%
Scioto Ridge	650	563	87%
Tyler Run	650	664	102%
Walnut Creek	650	665	102%
Wyandot Run	725	663	91%
ES SUBTOTAL	9,975	9,641	97%
Berkshire	1,100	1,134	103%
Hyatts	1,100	887	81%
Liberty	1,100	994	90%
Orange	1,050	1,057	101%
Shanahan	1,175	990	84%
MS SUBTOTAL	5,525	5,062	92%



► SOUTH OPTION 1

Highlights:

- Gemini Parkway corridor (including Prestwick Commons) moves to Alum Creek ES
- Olentangy Glade moves from Olentangy Meadows ES to Oak Creek ES
- Moves 294 K-5 students

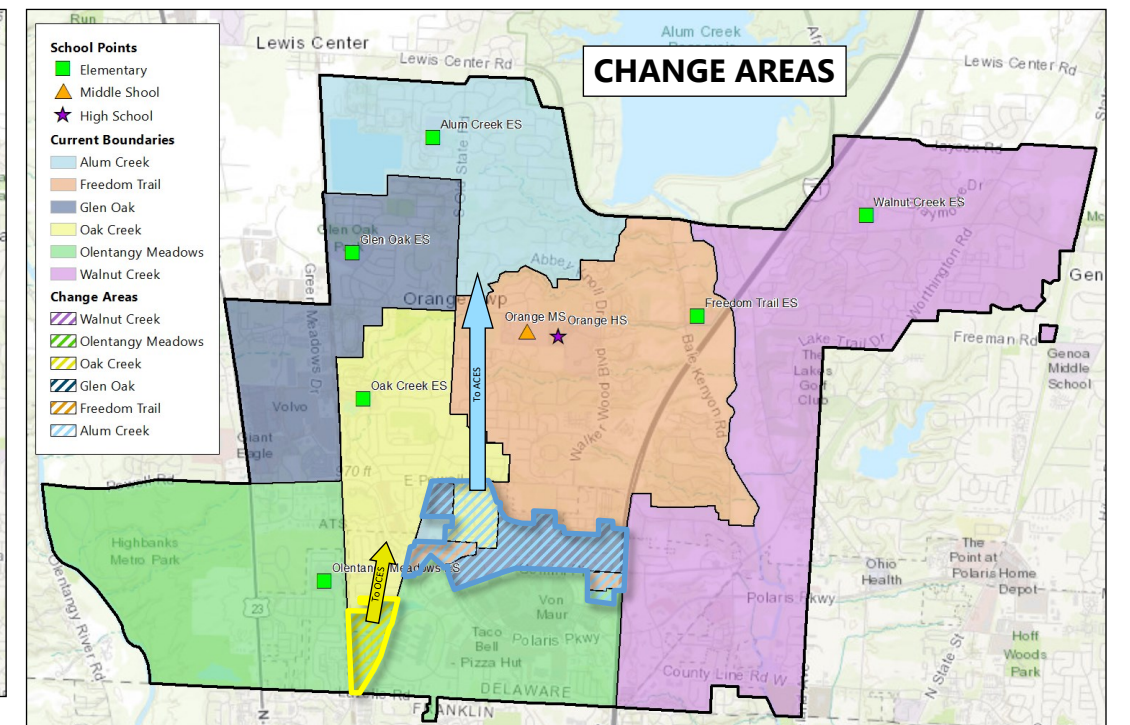
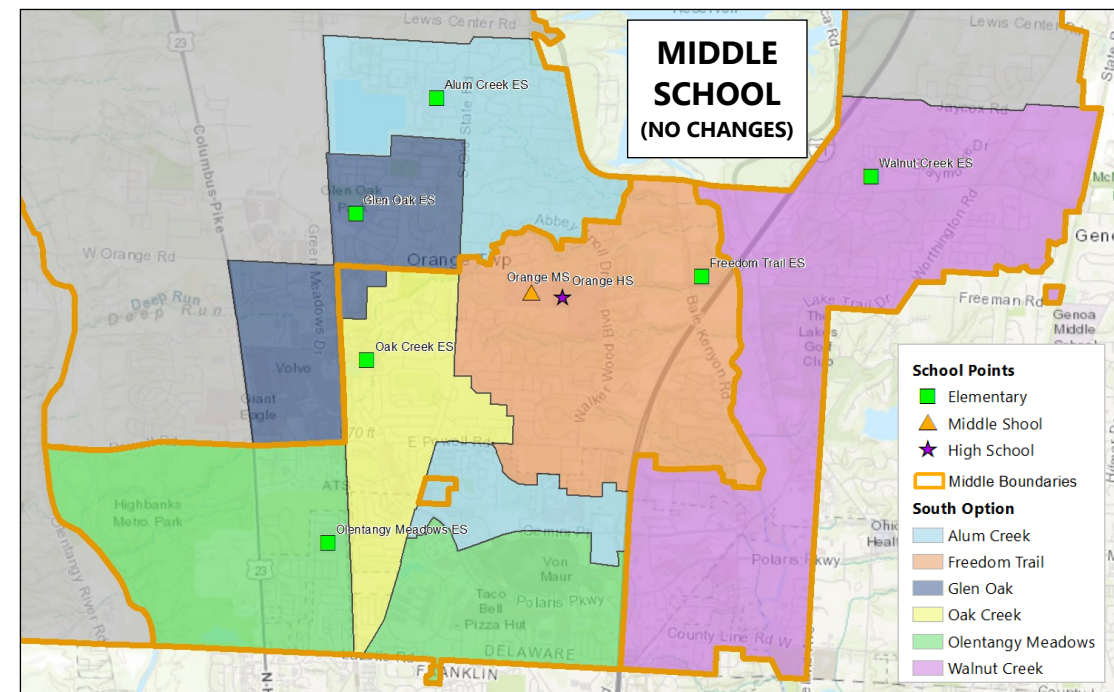
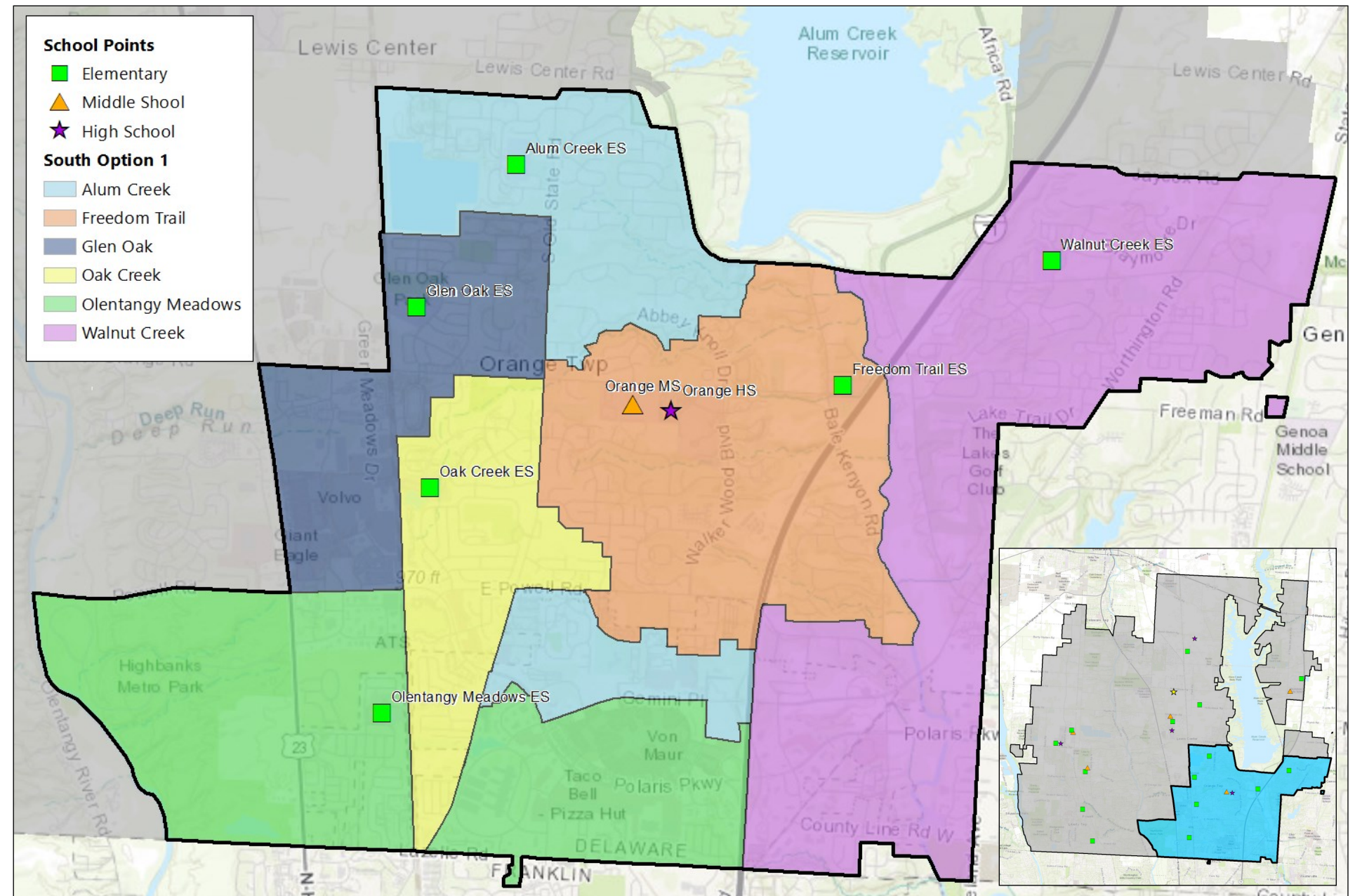
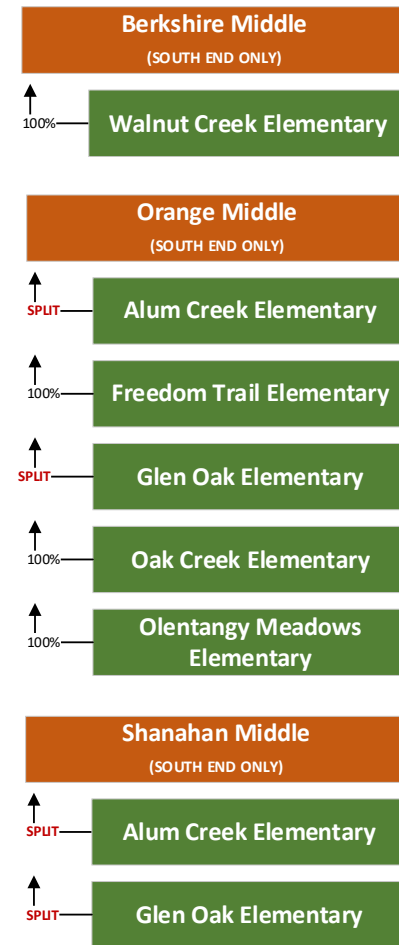
SOUTH OPTION 1			
Boundary	Capacity	Enroll.	Util. %
Alum Creek	725	705	97%
Freedom Trail	650	557	86%
Glen Oak	650	567	87%
Oak Creek	650	630	97%
Olentangy Meadows	650	644	99%
Walnut Creek	650	665	102%

Benefits:

- Similar travel times for majority of students moving to Alum Creek ES- Alum Creek ES is right off of S Old State Rd; commute time is similar going to the elementary schools that are more embedded into neighborhoods
- Better balances enrollment among buildings
- Relieves Olentangy Meadows ES (currently 108%)

Challenges:

- Feeder splits at Glen Oak ES and Alum Creek ES (could be addressed during Middle School 6 redistricting process)
- Walnut Creek ES is slightly over-utilized (projected to decrease in enrollment over next few years)



► SOUTH OPTION 2

Highlights:

- Gemini Parkway corridor & Olentangy Glade move to Alum Creek ES
- Moves 193 K-5 students

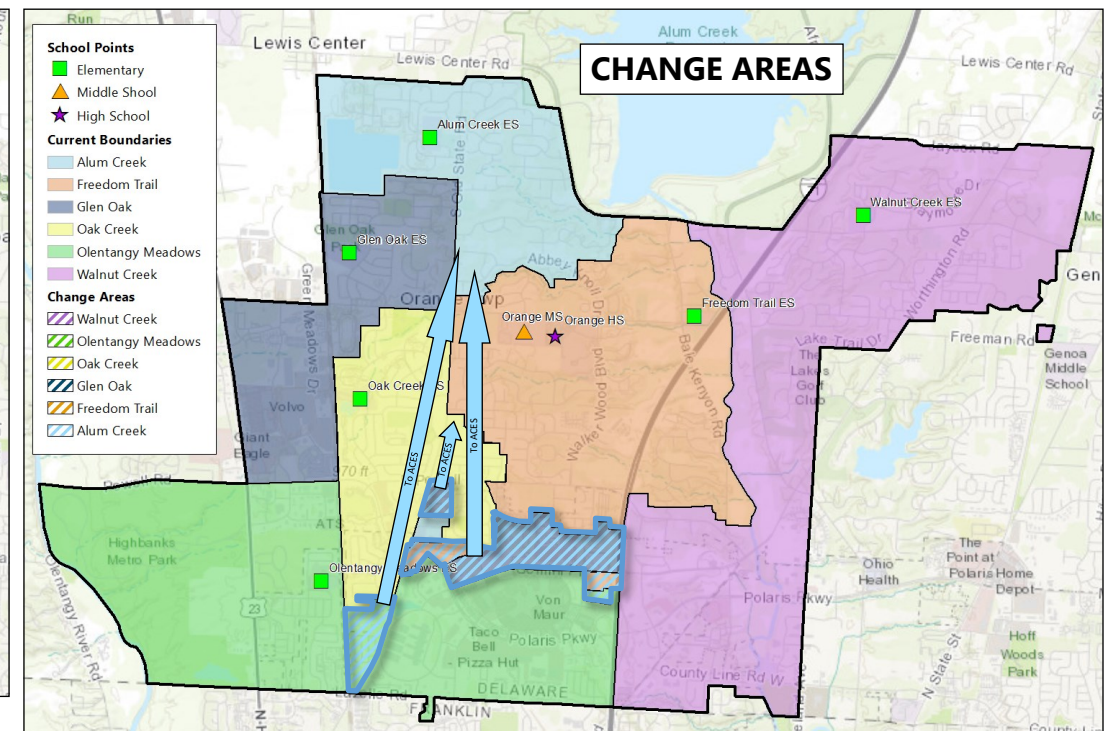
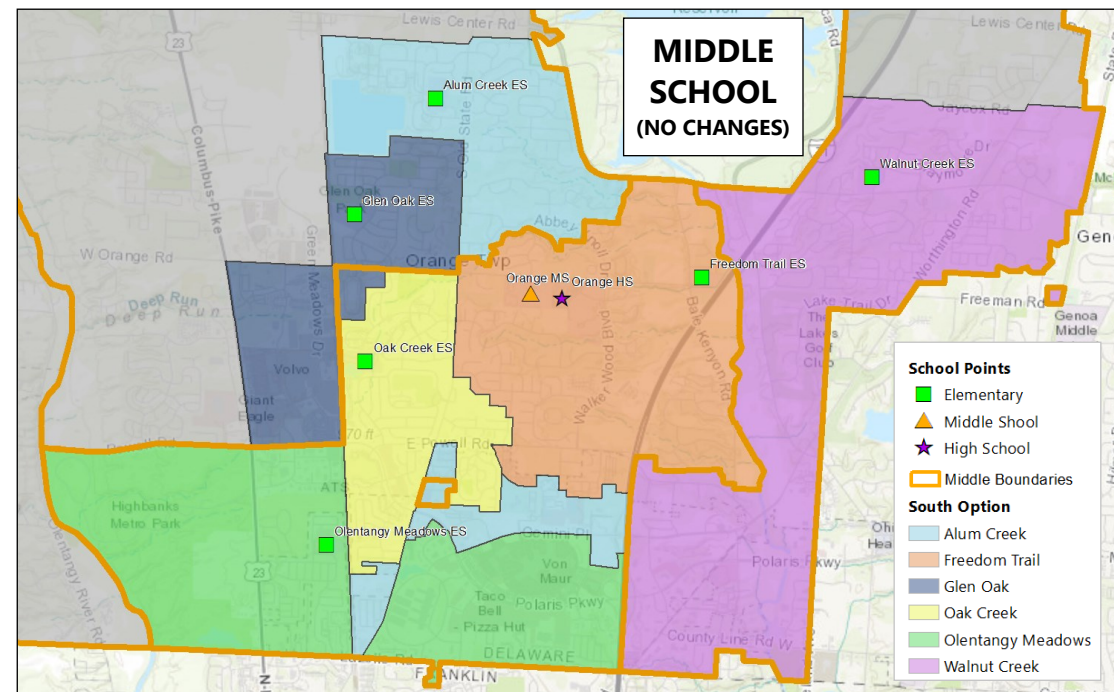
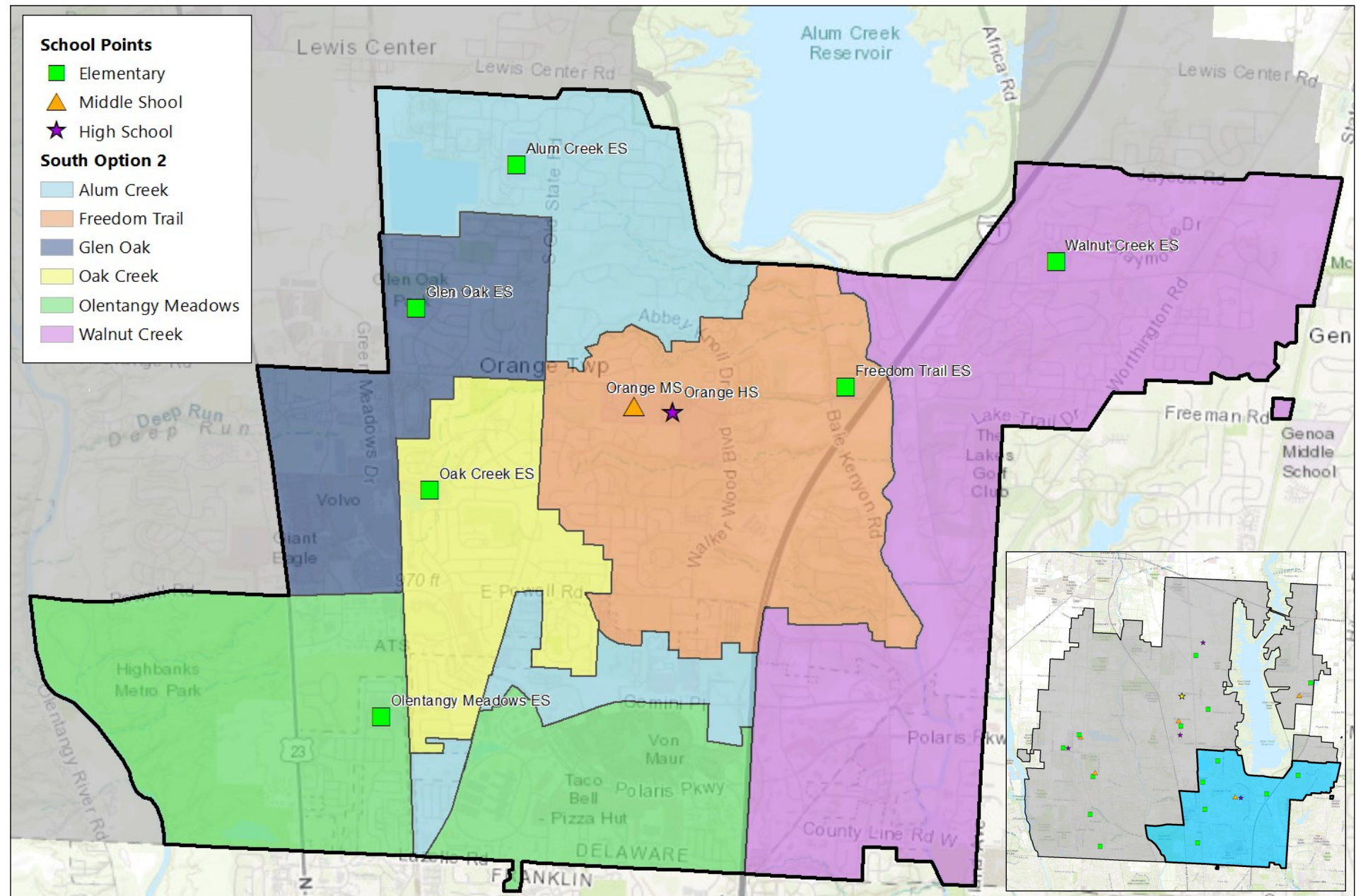
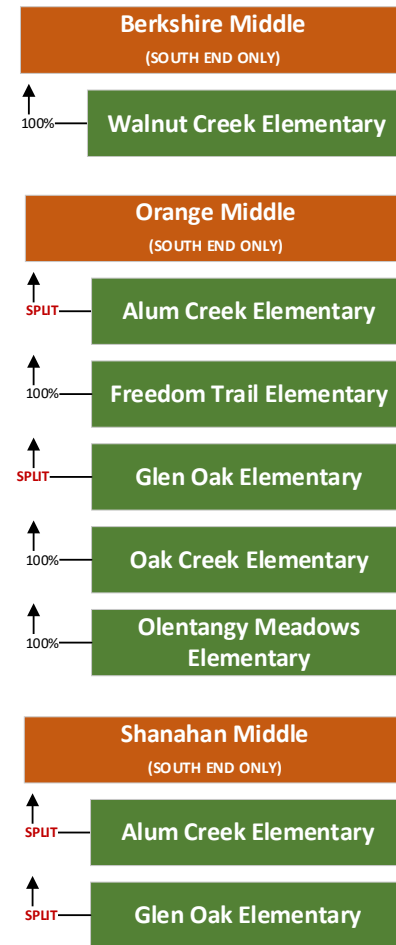
SOUTH OPTION 2			
Boundary	Capacity	Enroll.	Util. %
Alum Creek	725	660	91%
Freedom Trail	650	557	86%
Glen Oak	650	567	87%
Oak Creek	650	675	104%
Olentangy Meadows	650	644	99%
Walnut Creek	650	665	102%

Benefits:

- Similar travel times for majority of students moving to Alum Creek ES- Alum Creek ES is right off of S Old State Rd; commute time is similar going to the elementary schools that are more embedded into neighborhoods
- Relieves Olentangy Meadows ES (currently 108%)

Challenges:

- Feeder splits at Glen Oak ES and Alum Creek ES (could be addressed during Middle School 6 redistricting process)
- Oak Creek ES is over-utilized at 104%
- Walnut Creek ES is over-utilized (projected to decrease in enrollment over next few years)



► SOUTH OPTION 3

Highlights:

- Gemini Parkway corridor and majority of Polaris area move to Alum Creek ES
- Areas off of Lazelle Road that remain in the Olentangy Meadows ES boundary are stand-alone developments
- Moves 218 K-5 students

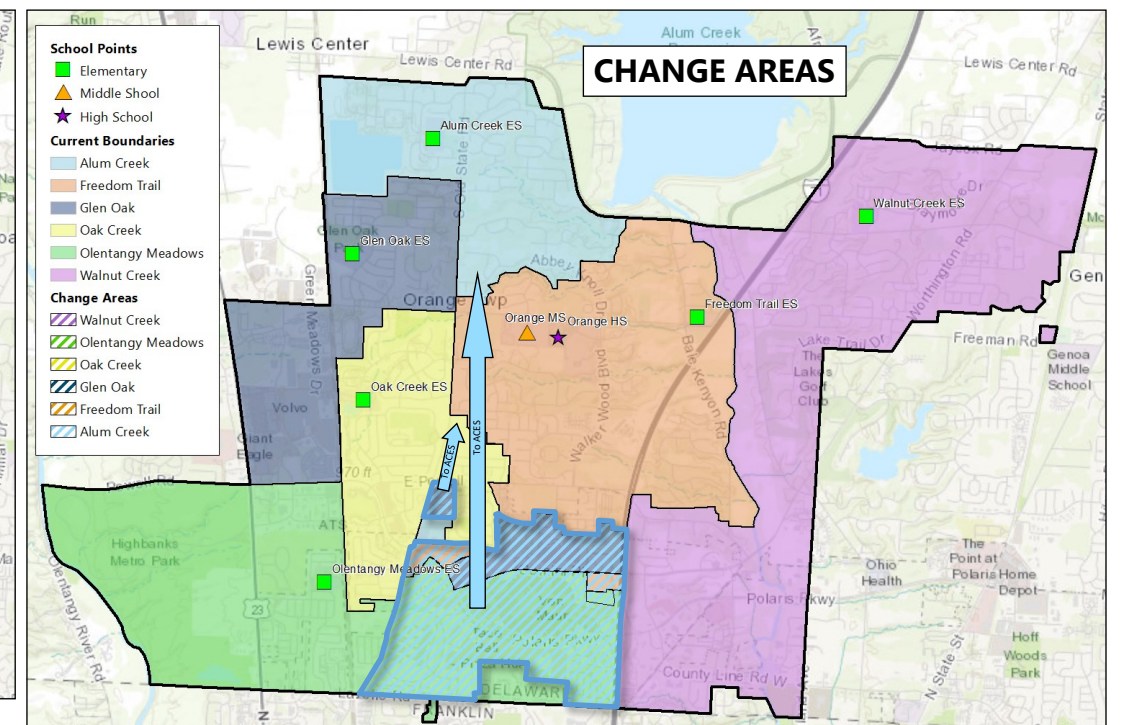
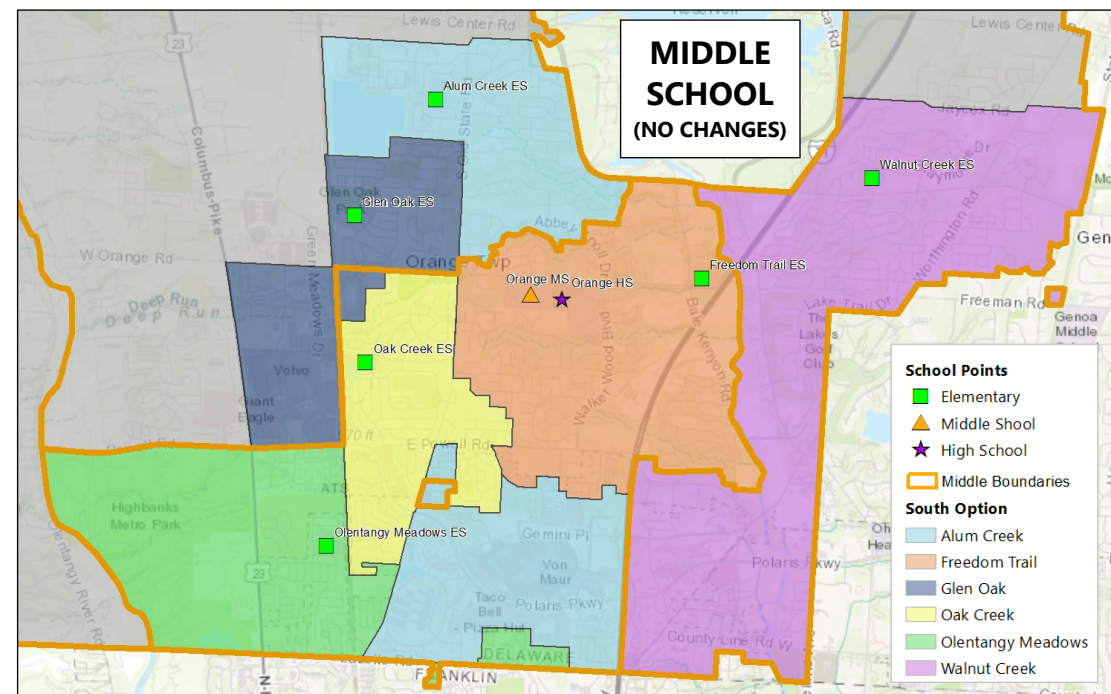
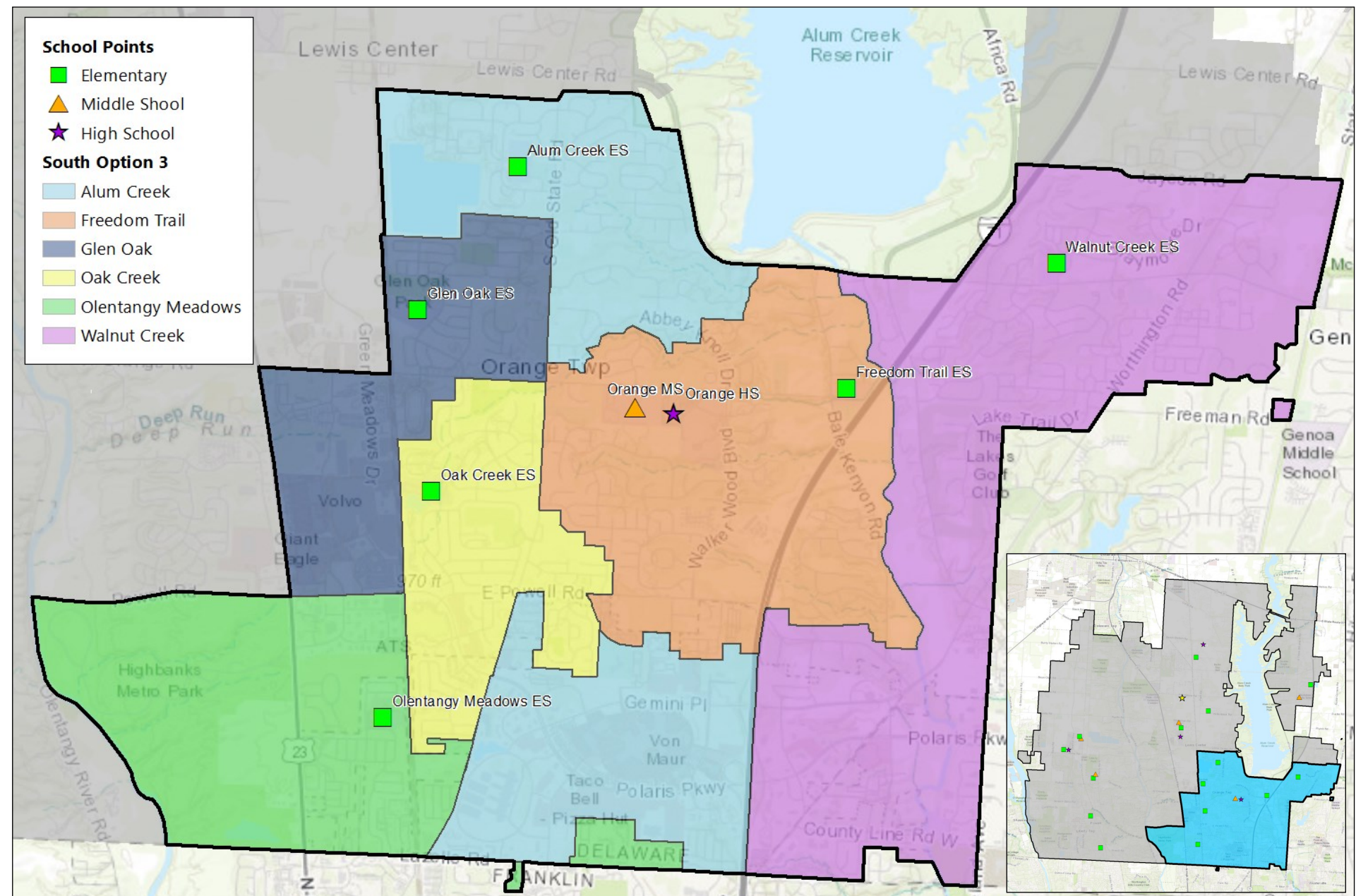
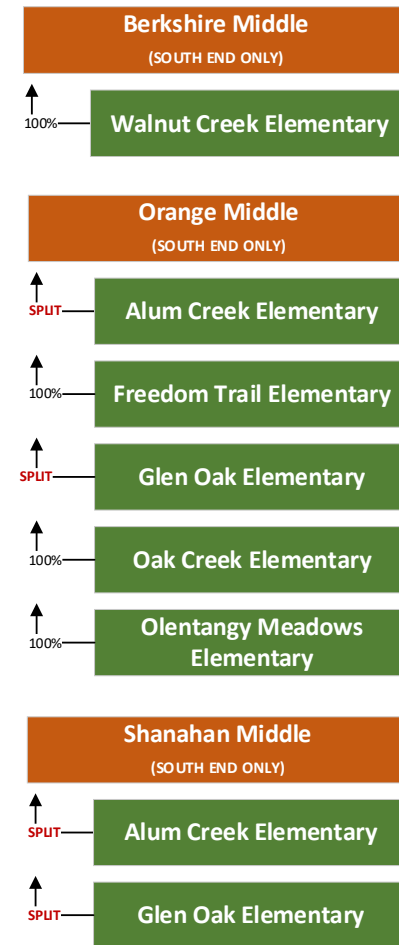
SOUTH OPTION 3			
Boundary	Capacity	Enroll.	Util. %
Alum Creek	725	685	94%
Freedom Trail	650	557	86%
Glen Oak	650	567	87%
Oak Creek	650	675	104%
Olentangy Meadows	650	619	95%
Walnut Creek	650	665	102%

Benefits:

- Similar travel times for majority of students moving to Alum Creek ES- Alum Creek ES is right off of S Old State Rd; commute time is similar going to the elementary schools that are more embedded into neighborhoods
- Relieves Olentangy Meadows ES (currently 108%)

Challenges:

- Feeder splits at Glen Oak ES and Alum Creek ES (could be addressed during Middle School 6 redistricting process)
- Oak Creek ES is over-utilized at 104%
- Walnut Creek ES is over-utilized (projected to decrease in enrollment over next few years)



► NORTH OPTION 1

Highlights:

- Area west of Glen Parkway (currently CES) moves to ES16
- Olentangy Falls & Olentangy Crossing move to Arrowhead ES
- Northeast corner of district (currently JCES) moves to CES
- Option reduces enrollment at currently over-utilized JCES (111%), CES (114%) & HES (107%).
- Arrowhead ES is utilized at 89%- new growth is pointed at this boundary (Evans Farms)
- Moves 822 K-5 students

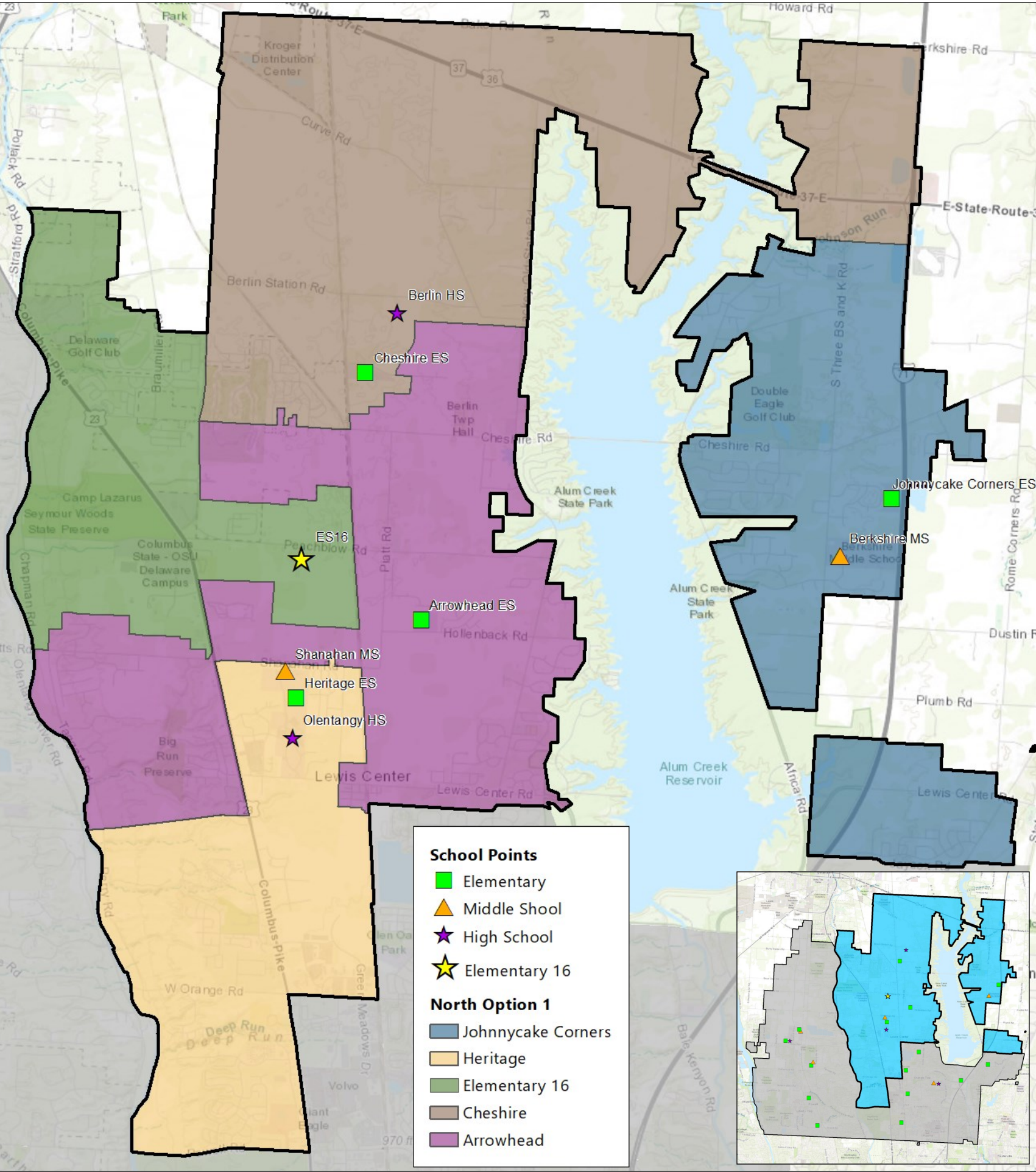
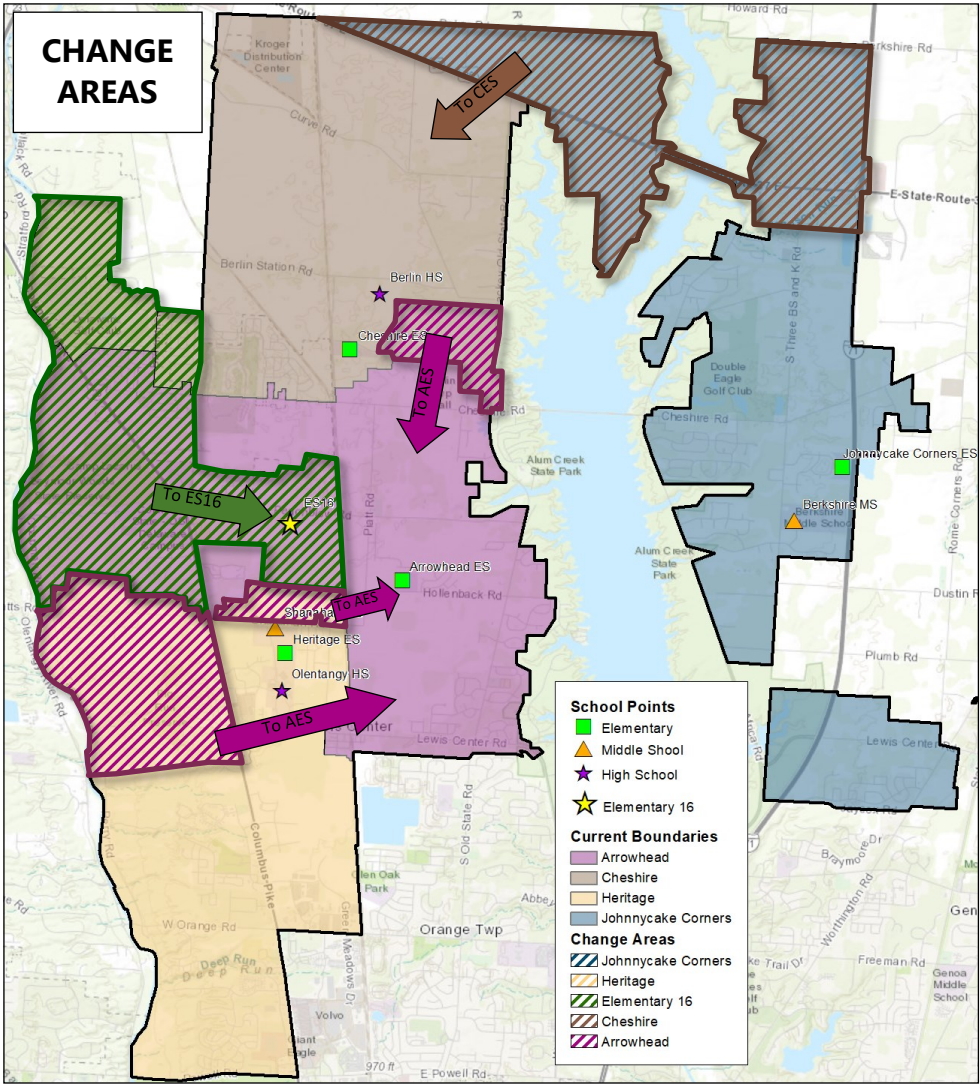
NORTH OPTION 1			
Boundary	Capacity	Enroll.	Util. %
Elementary 16	650	542	83%
Arrowhead	725	643	89%
Cheshire	650	475	73%
Heritage	650	516	79%
Johnnycake Corners	650	670	103%

Benefits:

- Room for growth in northern part of the district
- Fairly balanced utilizations except JCES

Challenges:

- Johnnycake Corners ES is over-utilized (projected to decrease in enrollment over next few years)



Associated middle school boundary concepts & feeder charts for northern options can be found at the end of this document.

► NORTH OPTION 2

Highlights:

- Area west of Braumiller (currently CES), Olentangy Falls, Olentangy Crossing, and Worthington Arms move to ES16
- Northeast corner of district (currently JCES) moves to CES
- Old State Road corridor between Cheshire Rd and 36/37 moves to Arrowhead ES
- Option reduces enrollment at currently over-utilized JCES (111%), CES (114%) & HES (107%)
- Arrowhead ES is utilized at 66%- new growth is pointed at this boundary (Evans Farms)
- Moves 753 K-5 students

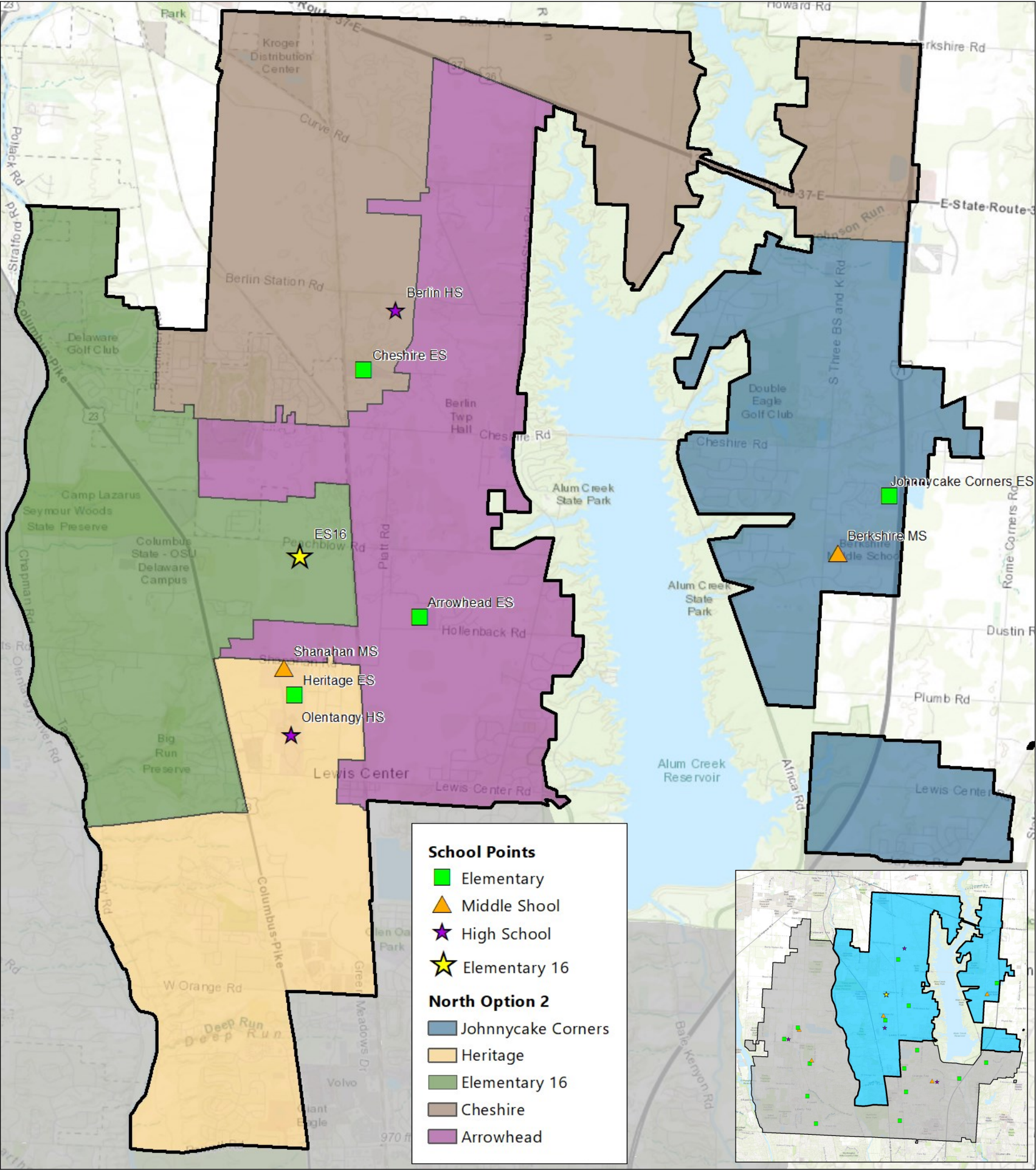
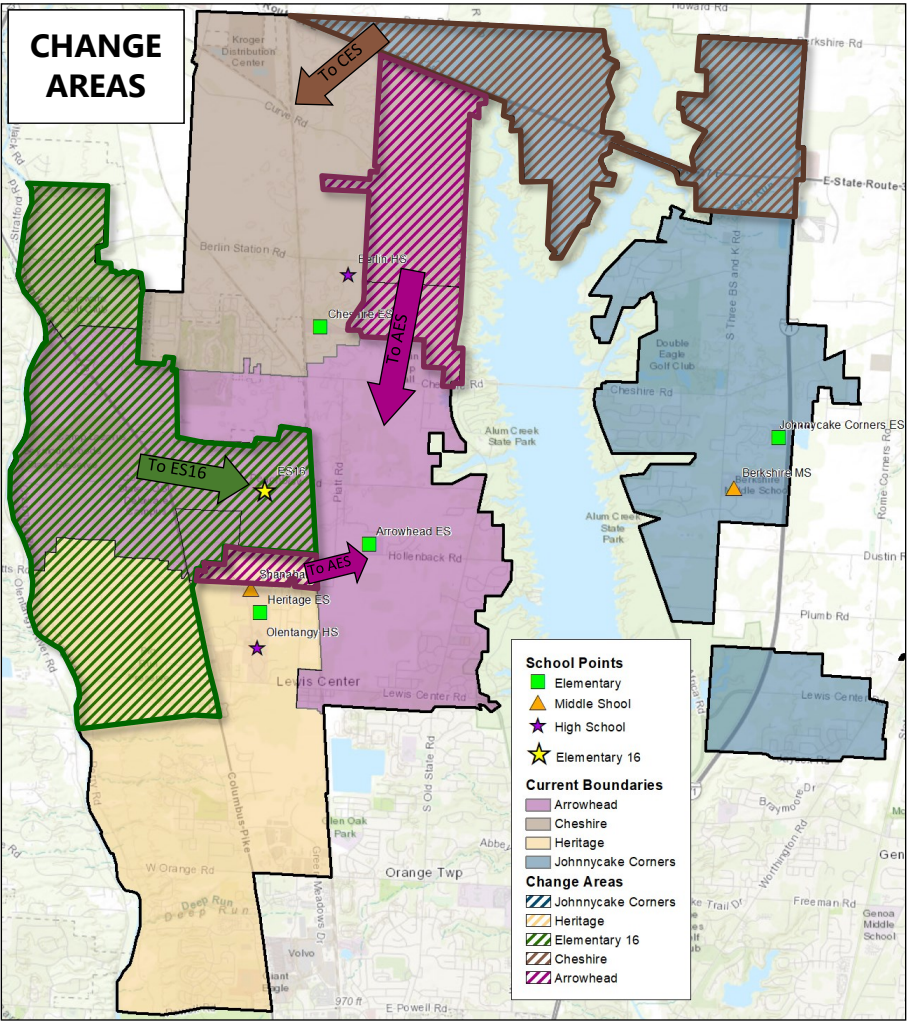
Benefits:

- Room for growth in northern part of the district

Challenges:

- Johnnycake Corners ES is over-utilized (projected to decrease in enrollment over next few years)

NORTH OPTION 2			
Boundary	Capacity	Enroll.	Util. %
Elementary 16	650	590	91%
Arrowhead	725	479	66%
Cheshire	650	590	91%
Heritage	650	517	80%
Johnnycake Corners	650	670	103%



Associated middle school boundary concepts & feeder charts for northern options can be found at the end of this document.

► NORTH OPTION 3

Highlights:

- Area west of Glen Parkway (currently CES) and Worthington Arms move to ES16
- Northeast corner of district (currently JCES) moves to CES
- Heritage ES is nearly unchanged (other than growth areas northeast of the school)
- Arrowhead ES is utilized at 57%- new growth is pointed at this boundary (Evans Farms)
- Moves 689 K-5 students

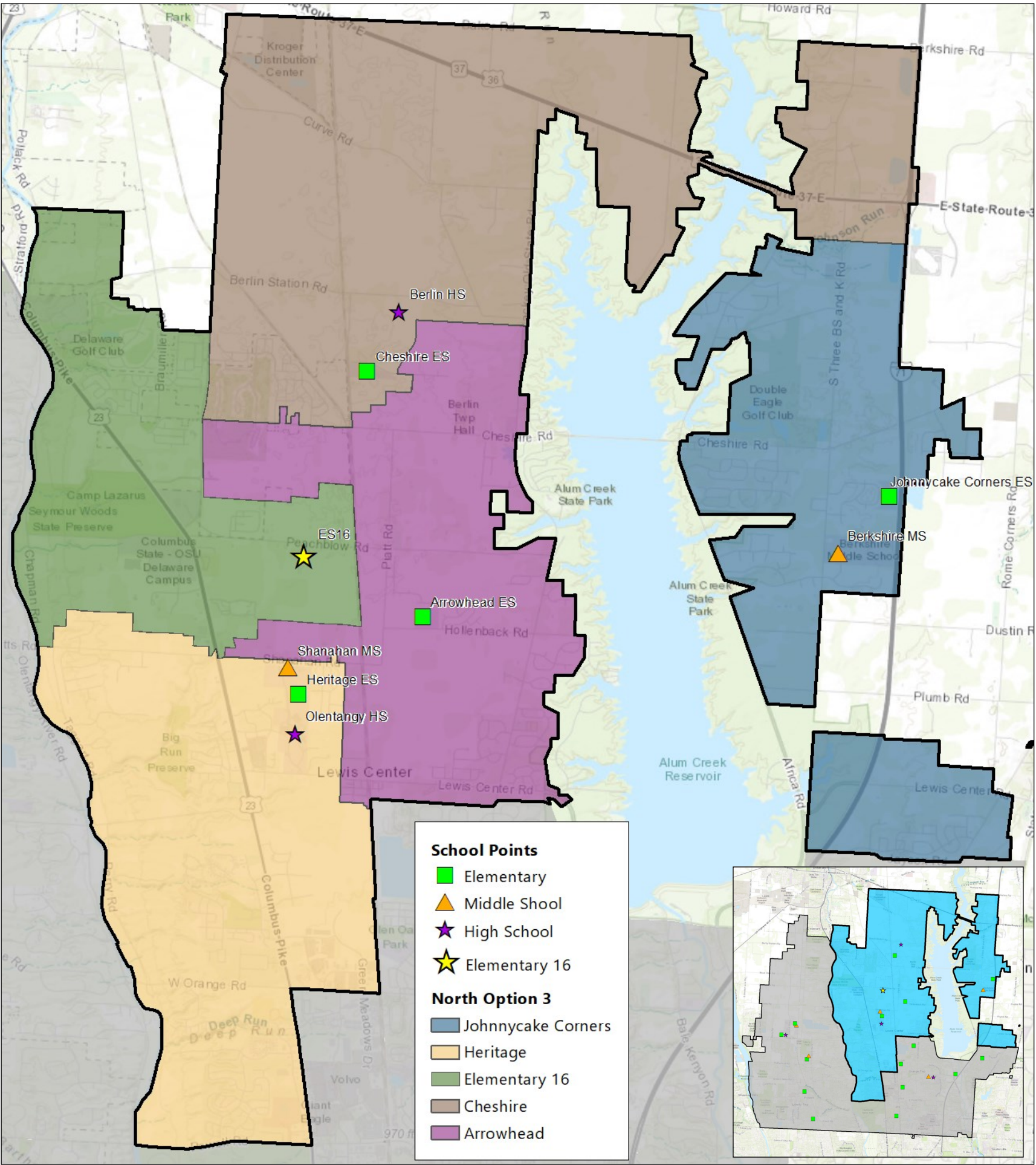
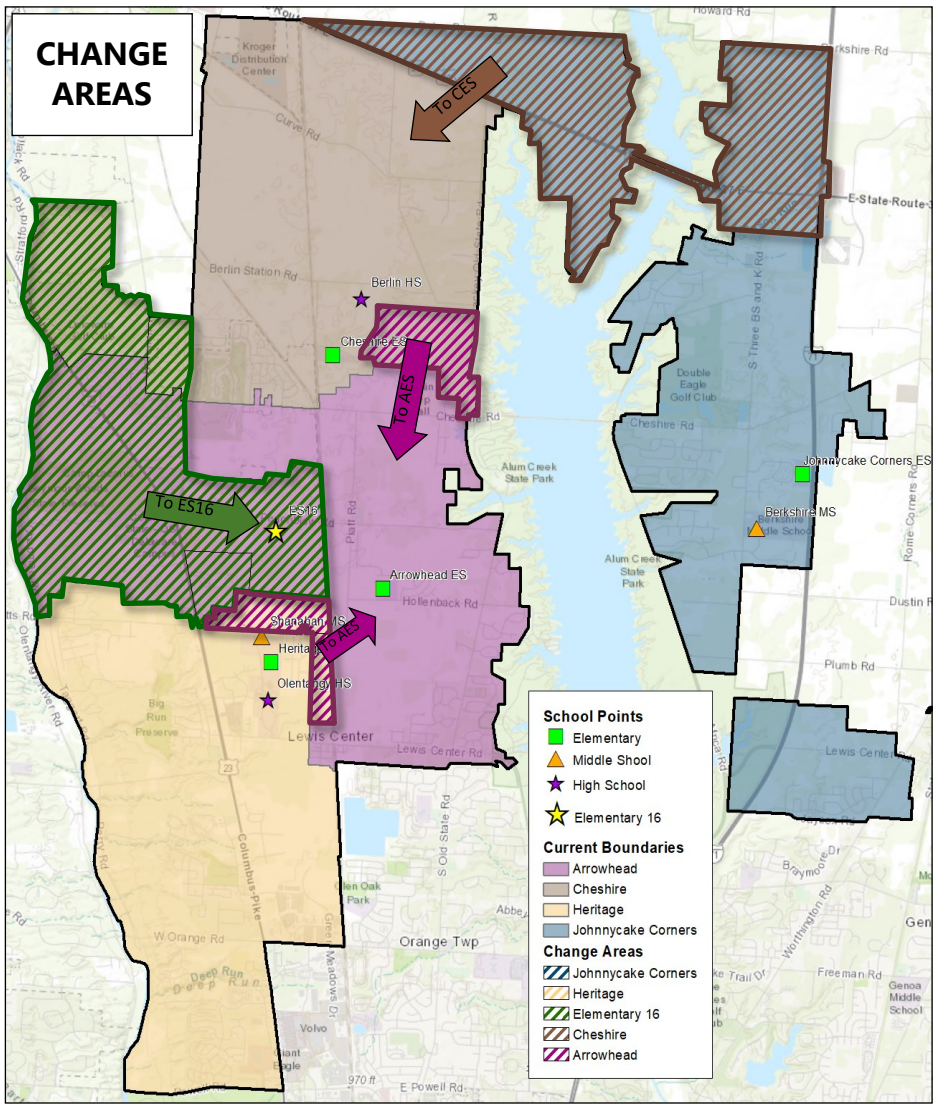
NORTH OPTION 3			
Boundary	Capacity	Enroll.	Util. %
Elementary 16	650	589	91%
Arrowhead	725	416	57%
Cheshire	650	475	73%
Heritage	650	696	107%
Johnnycake Corners	650	670	103%

Benefits:

- Room for growth in northern part of the district

Challenges:

- Johnnycake Corners ES is over-utilized (projected to decrease in enrollment over next few years)
- Some of the growth pointed at Heritage ES has been moved to Arrowhead ES, but Heritage ES is still over-utilized



Associated middle school boundary concepts & feeder charts for northern options can be found at the end of this document.

► MIDDLE SCHOOL CONCEPT 1

NOTE: The option on this page is a concept. With slight adjustments of geography, this option can be fitted to any of the northern options seen previously in this packet. The middle school concepts are centered around the northeast section of the district–Shanahan MS, Hyatts MS, and Berkshire MS are the only boundaries affected by these middle school concepts. A more robust middle school redistricting process will take place once Middle School 6 is built.

Highlights:

- Arrowhead ES splits between Berkshire MS & Shanahan MS
- ES16 splits between Shanahan MS & Hyatts MS
- Heritage ES feeds 100% to Shanahan MS
- Cheshire ES & Johnnycake Corners ES feeds 100% to Berkshire MS
- Moves 52 6-8 students

CONCEPT (VALUES SUBJECT TO CHANGE BASED ON NORTH OPTION)			
Boundary	Capacity	Enroll	Util %
Berkshire	1,100	1,087	99%
Hyatts	1,100	887	81%
Liberty	1,100	994	90%
Orange	1,050	1,062	101%
Shanahan	1,175	1,032	88%
MS SUBTOTAL	5,525	5,062	92%

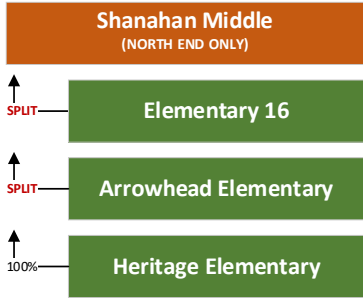
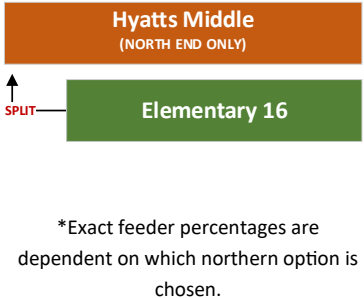
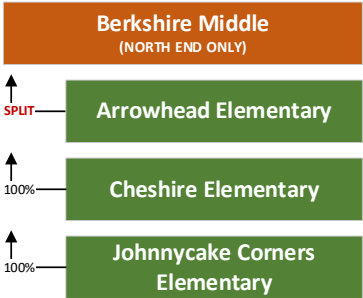
Benefits:

- Berkshire MS is under 100%

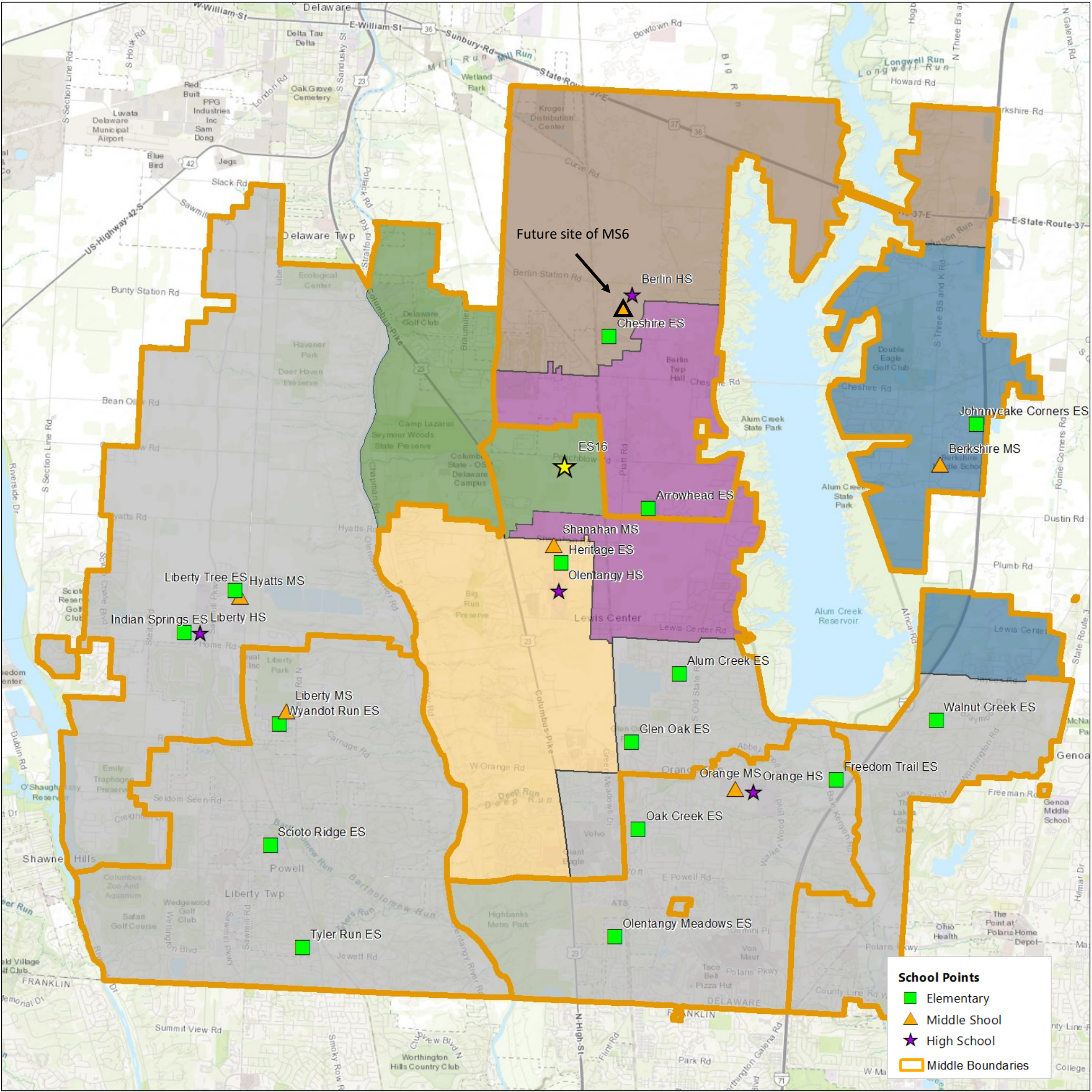
Challenges:

- Feeder splits at ES16 & Arrowhead ES
- Berkshire MS will need additional relief when MS6 is built

FEEDER CHARTS*



*Exact feeder percentages are dependent on which northern option is chosen.



► MIDDLE SCHOOL CONCEPT 2

NOTE: The option on this page is a concept. With slight adjustments of geography, this option can be fitted to any of the northern options seen previously in this packet. The middle school concepts are centered around the northeast section of the district–Shanahan MS, Hyatts MS, and Berkshire MS are the only boundaries affected by these middle school concepts. A more robust middle school redistricting process will take place once Middle School 6 is built (22-23).

Highlights:

- ES16 splits between Shanahan MS & Hyatts MS
- Cheshire ES splits between Hyatts MS & Berkshire MS
- Arrowhead ES and Heritage ES feed 100% to Shanahan MS
- Johnnycake Corners ES feeds 100% to Berkshire
- Moves 192 6-8 students

CONCEPT (VALUES SUBJECT TO CHANGE BASED ON NORTH OPTION)			
Boundary	Capacity	Enroll	Util %
Berkshire	1,100	942	86%
Hyatts	1,100	936	85%
Liberty	1,100	994	90%
Orange	1,050	1,057	101%
Shanahan	1,175	1,133	96%
MS SUBTOTAL	5,525	5,062	92%

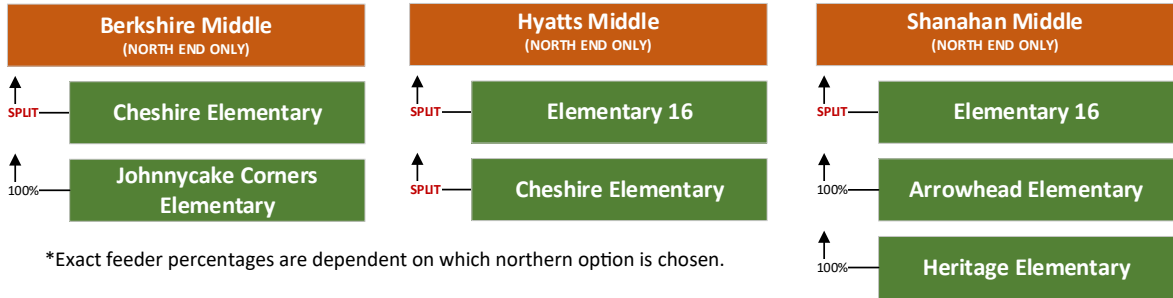
Benefits:

- Berkshire MS has some available space to take on projected growth
- More Shanahan students go to Berlin HS (better feeder split)

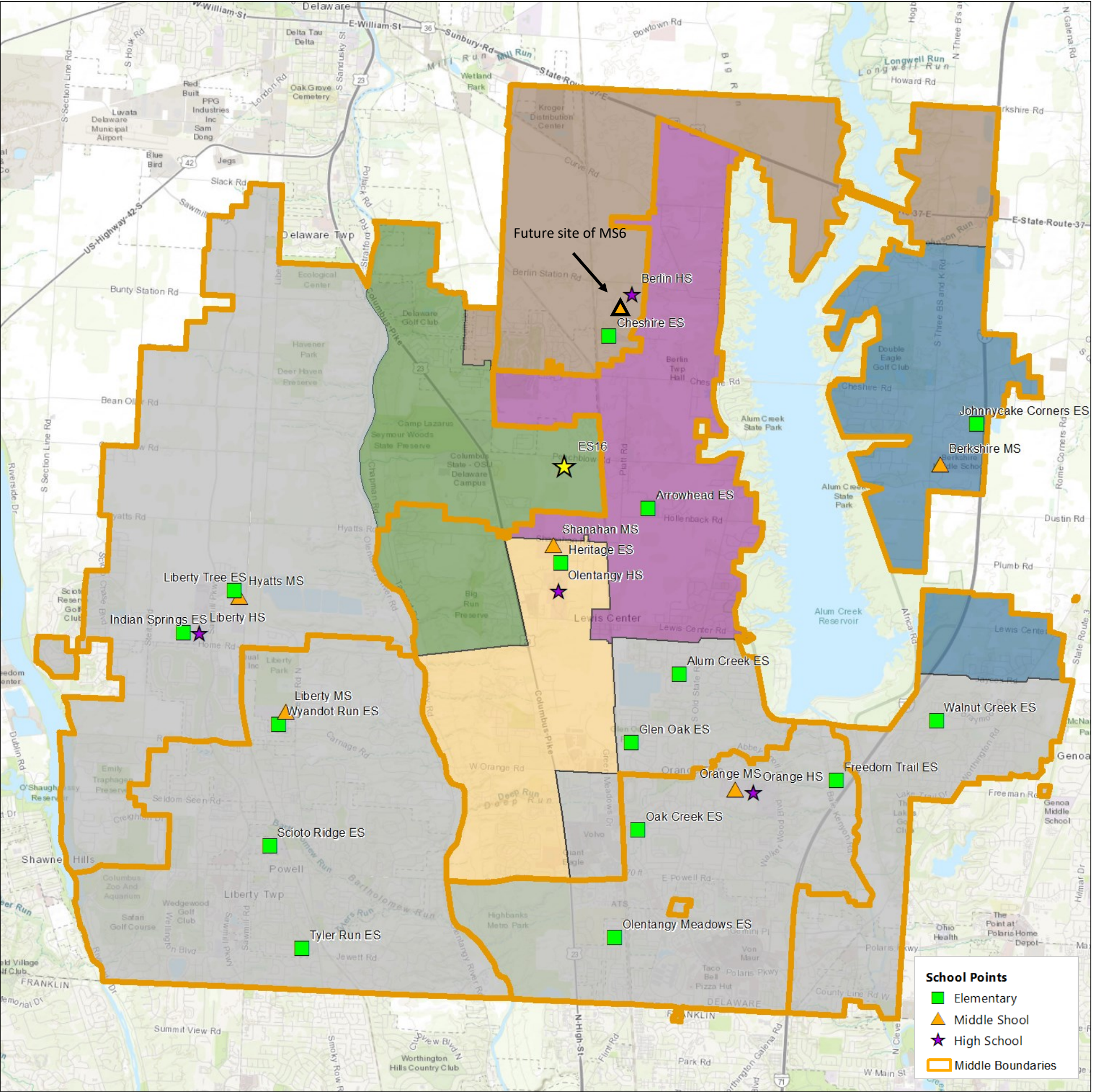
Challenges:

- Feeder splits at ES16 & Cheshire ES

FEEDER CHARTS*



*Exact feeder percentages are dependent on which northern option is chosen.



► MIDDLE SCHOOL CONCEPT 3

NOTE: The option on this page is a concept. With slight adjustments of geography, this option can be fitted to any of the northern options seen previously in this packet. The middle school concepts are centered around the northeast section of the district–Shanahan MS, Hyatts MS, and Berkshire MS are the only boundaries affected by these middle school concepts. A more robust middle school redistricting process will take place once Middle School 6 is built.

Highlights:

- Arrowhead ES splits between Shanahan MS & Berkshire MS
- ES16 feeds 100% to Hyatts MS
- Heritage ES feeds 100% to Shanahan MS
- Johnnycake Corners ES and Cheshire ES feed 100% to Berkshire MS
- Moves 52 6-8 students

CONCEPT (VALUES SUBJECT TO CHANGE BASED ON NORTH OPTION)			
Boundary	Capacity	Enroll	Util %
Berkshire	1,100	1,085	99%
Hyatts	1,100	936	85%
Liberty	1,100	994	90%
Orange	1,050	1,062	101%
Shanahan	1,175	985	84%
MS SUBTOTAL	5,525	5,062	92%

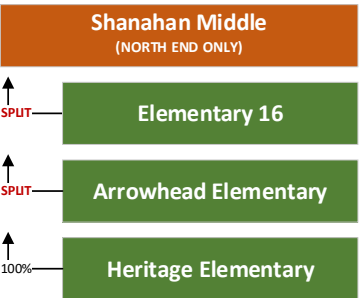
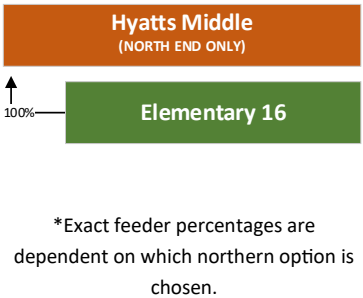
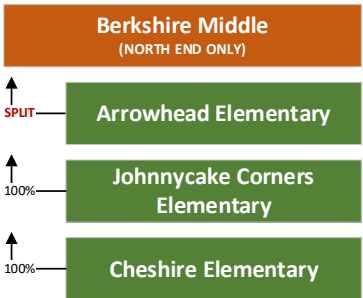
Benefits:

- Berkshire MS is under 100%

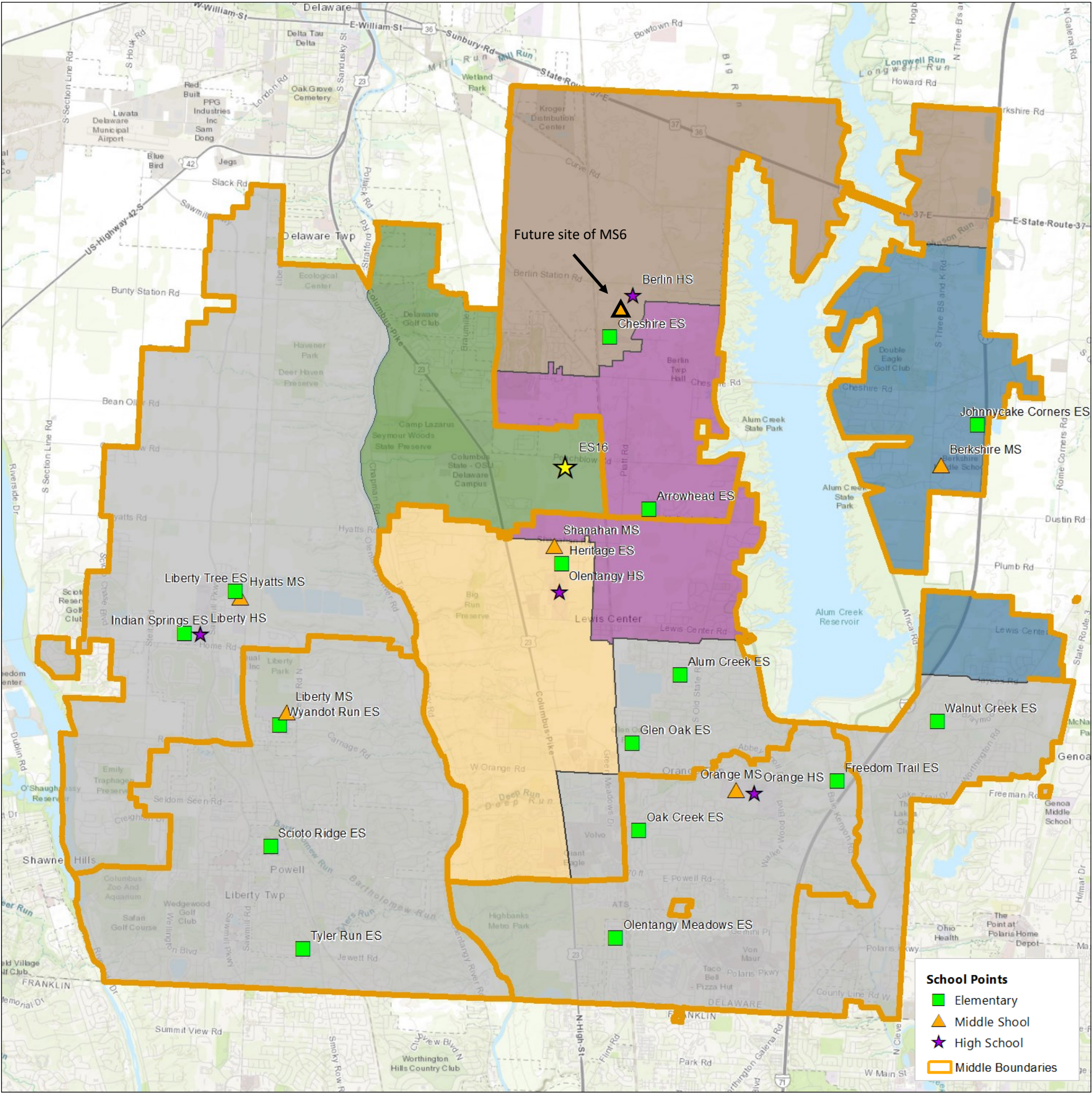
Challenges:

- Feeder splits at Arrowhead ES
- Berkshire MS will need additional relief when MS6 is built

FEEDER CHARTS*



*Exact feeder percentages are dependent on which northern option is chosen.



School Points

- Elementary
- ▲ Middle School
- ★ High School
- ▭ Middle Boundaries

► MIDDLE SCHOOL CONCEPT 4

NOTE: The option on this page is a concept. Unlike the other middle school concepts, this concept only works if there are no changes made to relieve Heritage ES. The middle school concepts are centered around the northeast section of the district– Shanahan MS, Hyatts MS, and Berkshire MS are the only boundaries affected by these middle school concepts. A more robust middle school redistricting process will take place once Middle School 6 is built.

Highlights:

- Arrowhead ES & Heritage ES feed 100% to Shanahan MS
- ES16 feeds 100% to Hyatts MS
- Johnnycake Corners ES and Cheshire ES feed 100% to Berkshire
- **This concept provides 100% feeders to middle school only if there are no changes made to relieve Heritage ES, otherwise there will be a split at Shanahan MS**
- Moves 146 6-8 students

CONCEPT (VALUES SUBJECT TO CHANGE BASED ON NORTH OPTION)			
Boundary	Capacity	Enroll	Util %
Berkshire	1,100	993	90%
Hyatts	1,100	936	85%
Liberty	1,100	994	90%
Orange	1,050	1,062	101%
Shanahan	1,175	1,077	92%
MS SUBTOTAL	5,525	5,062	92%

Benefits:

- 100% feeders to middle school
- Berkshire has some available space to take in projected growth

Challenges:

- Option can not provide 100% feeders to all north schools if changes are made to relieve Heritage ES

FEEDER CHARTS

