

OLENTANGY SCHOOLS 2021-22 SCHOOL YEAR

REDISTRICTING OPTIONS
PRESENTATION

FEBRUARY 2021



OLENTANGY SCHOOLSSM
Flourish Here.



PROCESS



HISTORY

REDISTRICTING GUIDELINES RESOLUTION

- WHEREAS, A strong sense of community is essential to a successful school district and successful students;
- WHEREAS, The Board of Education of the Olentangy Local School District recognizes that a district of 95 square miles faces a great challenge when working to promote a strong sense of community;
- WHEREAS, The Board believes that all children deserve the same educational opportunities;
- WHEREAS, The Board believes that the district is more than political, governmental, or geographical boundaries and directional lines on a map;
- WHEREAS, The Board believes that a common district-wide Olentangy School experience would bond our expansive district and foster a strong sense of community;
- THEREFORE, BE IT RESOLVED, The Board of Education of the Olentangy Local School District commits to ensuring that the sense of the Olentangy community will be strengthened and secured. To achieve this end, the Board will strive to assure that, as often as possible, students are assigned to buildings based on the following principles:
 - For All Building Levels:
 - Each building should be optimally utilized.
 - Once determined, after consideration of projected enrollment, attendance areas should remain intact, except to adjust for unexpectedly disparate student populations; distribute programs among schools to optimally utilize facilities; or for the opening of additional buildings.
 - Safety, convenience and efficiency of transportation, as well as student travel times and current population patterns, should be considered in assigning students to buildings.
 - Alignment of elementary, middle and high school attendance areas should be a factor in establishing attendance areas as much as possible.
 - RESOLVED, The Board will strive to locate future school sites that support the preceding principles.
 - RESOLVED, The Board instructs the superintendent of schools of the Olentangy Local School District to adopt plans, procedures, rules and regulations that support the above principles.

[Revised Policy Adoption Date: September 29, 2015]



HISTORY

- 30 Years, 25 Schools

School	92-93	93-94	94-95	95-96	96-97	97-98	98-99	99-00	00-01	01-02	02-03	03-04	04-05	05-06	06-07	07-08	08-09	09-10	10-11	11-12	12-13	13-14	14-15	15-16	16-17	17-18	18-19	19-20	20-21
Elementary Schools																													
Shanahan																													
Wyandot Run																													
Alum Creek																													
Scioto Ridge																													
Arrowhead																													
Oak Creek																													
Tyler Run																													
Indian Springs																													
Walnut Creek																													
Glen Oak																													
Olentangy Meadows																													
Liberty Tree																													
Johnny Cake Corners																													
Freedom Trail																													
Cheshire																													
Heritage																													
Middle Schools																													
Shanahan																													
Liberty																													
Orange																													
Hyatts																													
Berkshire																													
High Schools																													
Olentangy																													
Liberty																													
Orange																													
Berlin																													



HISTORY

• CURRENT ENROLLMENT, BOUNDARIES, AND UTILIZATION

School	Capacity	Enrollment	Utilization
--------	----------	------------	-------------

Elementary Schools

East	Alum Creek	725	469	65%
	Arrowhead	725	679	94%
	Cheshire	650	737	113%
	Freedom Trail	650	599	92%
	Glen Oak	650	678	104%
	Heritage	650	695	107%
	Johnny Cake Corners	650	718	110%
	Oak Creek	650	677	104%
	Olentangy Meadows	650	709	109%
	Walnut Creek	650	664	102%
ES 16		725		
East ES Total		7,375	6,625	90%

West	Indian Springs	650	536	82%
	Liberty Tree	650	589	91%
	Scioto Ridge	650	573	88%
	Tyler Run	650	657	101%
	Wyandot Run	725	682	94%
West ES Total		3,325	3,037	91%

ES Total	10,700	9,662	90%
----------	--------	-------	-----

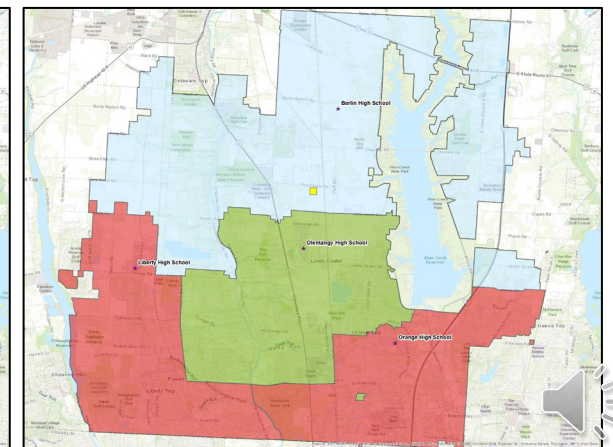
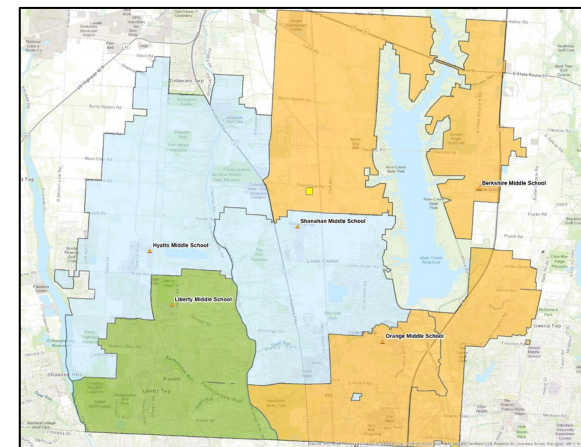
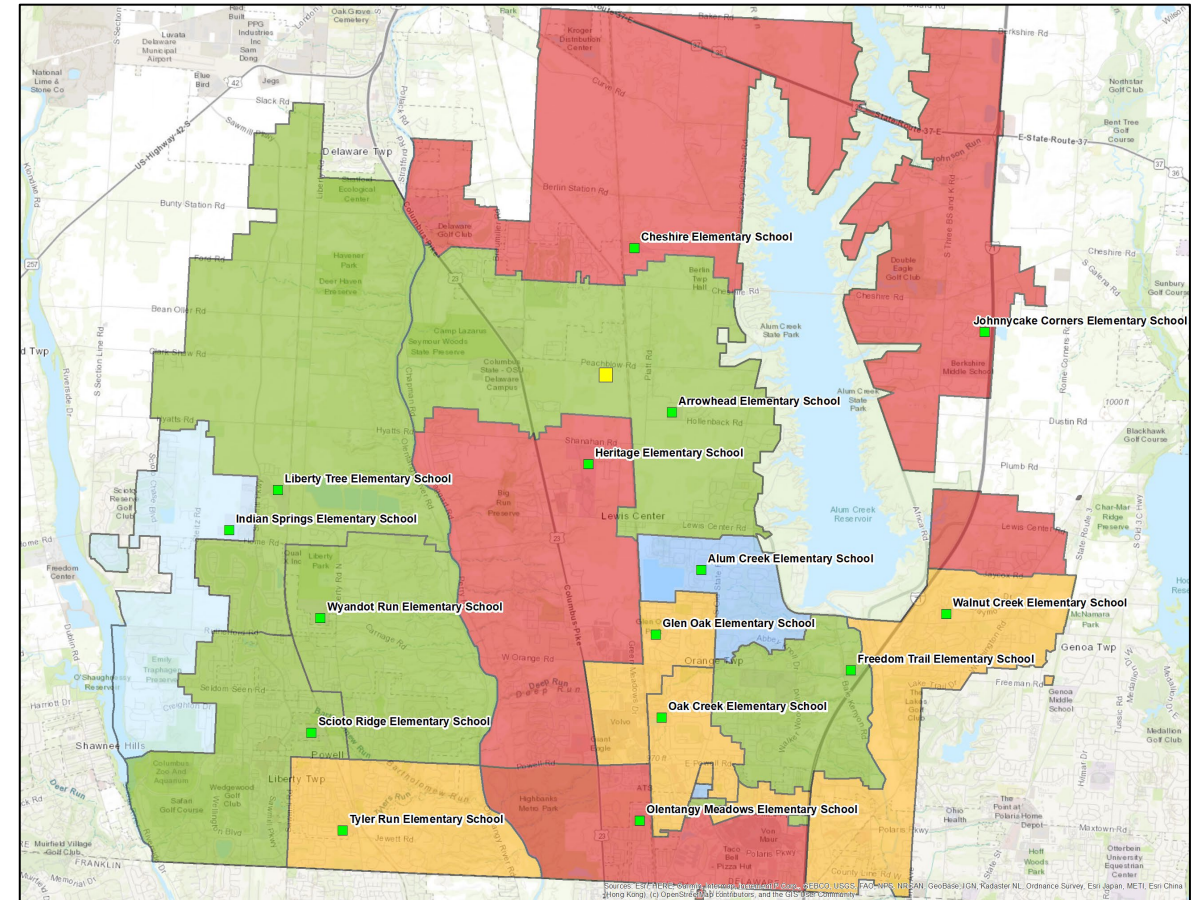
Middle Schools

Berkshire	1,100	1,134	103%
Hyatts	1,100	889	81%
Liberty	1,100	987	90%
Orange	1,050	1,072	102%
Shanhan	1,175	997	85%
MS Total	5,525	5,079	92%

High Schools

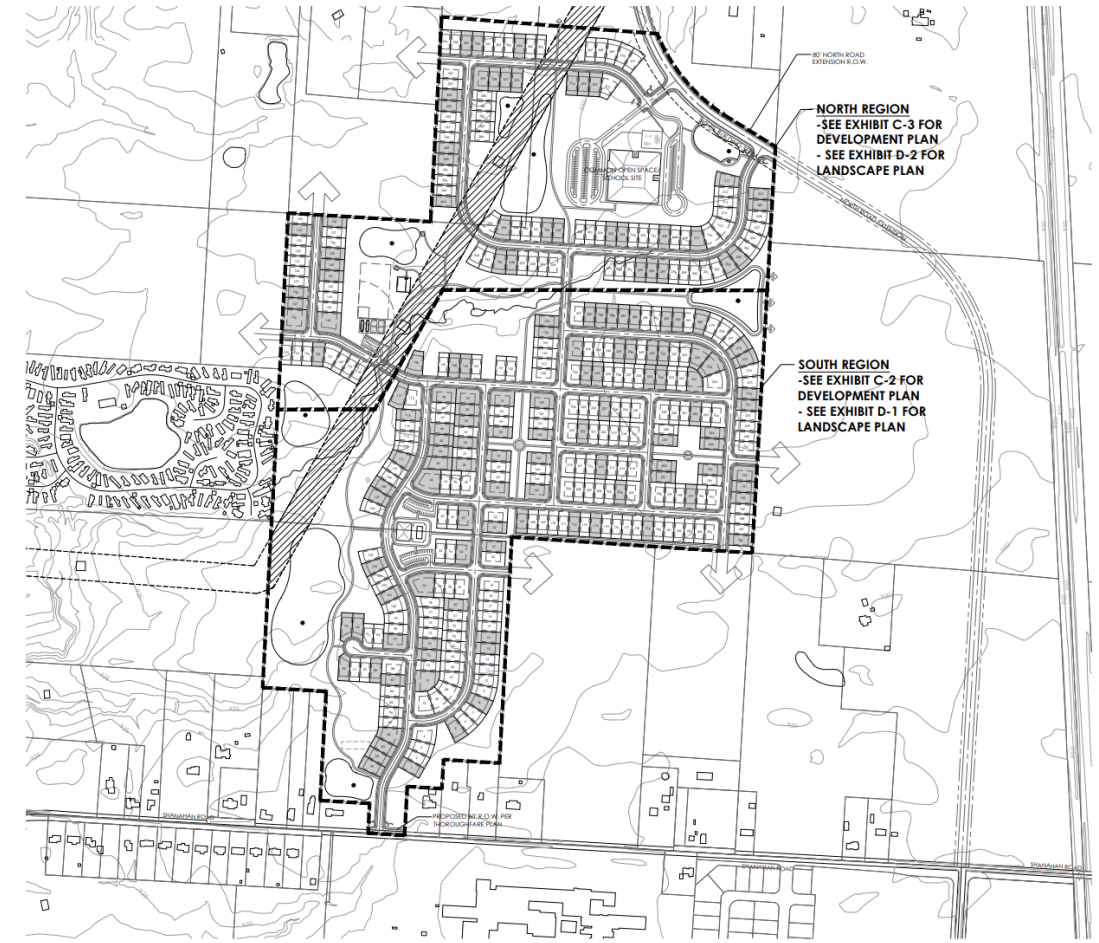
Berlin	1,800	1,472	82%
Liberty	1,800	1,995	111%
Olentangy	1,800	1,545	86%
Orange	1,800	2,044	114%
HS Total	7,200	7,056	98%

Total	23,425	21,797	93%
-------	--------	--------	-----



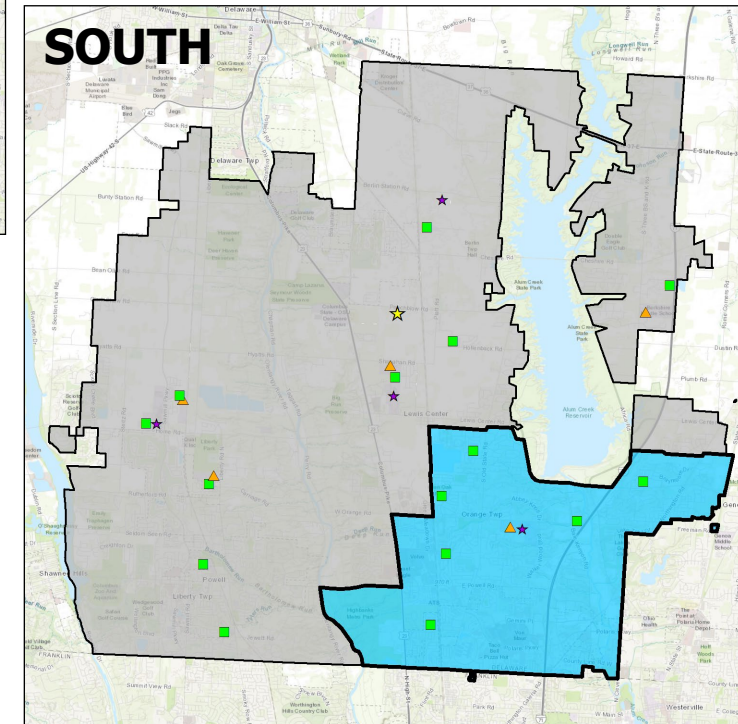
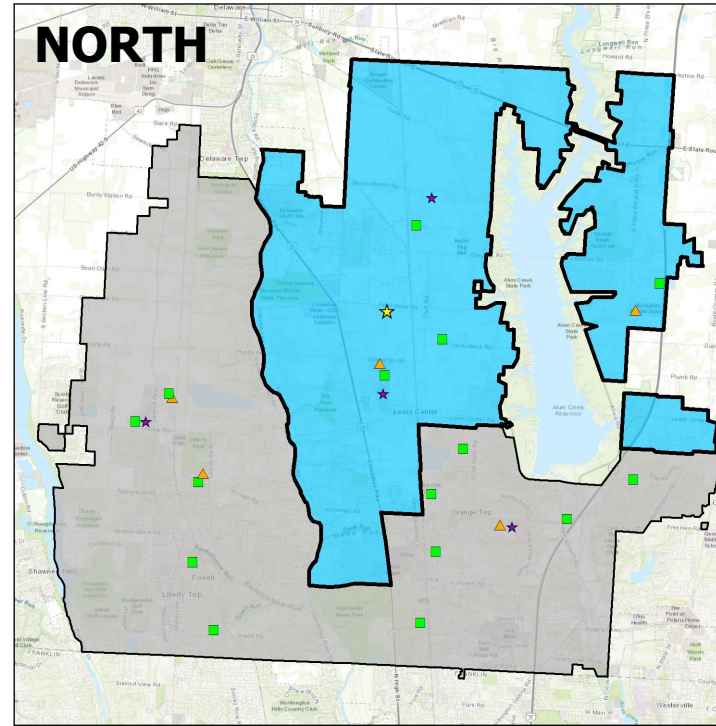
GOALS FOR THIS PROCESS

- Establish attendance zone for Elementary School 16
- Review data relative to rezoning guidelines
- Facilitate conversations with community members
- Create boundaries that will keep enrollment balanced for the near future



OPTIONS

- Elementary options are split by region:
 - North = Cheshire, Johnnycake Corners, Heritage, Arrowhead, Elementary School 16
 - South = Alum Creek, Freedom Trail, Glen Oak, Oak Creek, Olentangy Meadows, Walnut Creek
 - No proposed changes to boundaries for elementary schools west of Olentangy River/315
- All north options fit with all south options
- Middle School concepts are for northern region; no changes to southern region



BOUNDARY OPTIONS

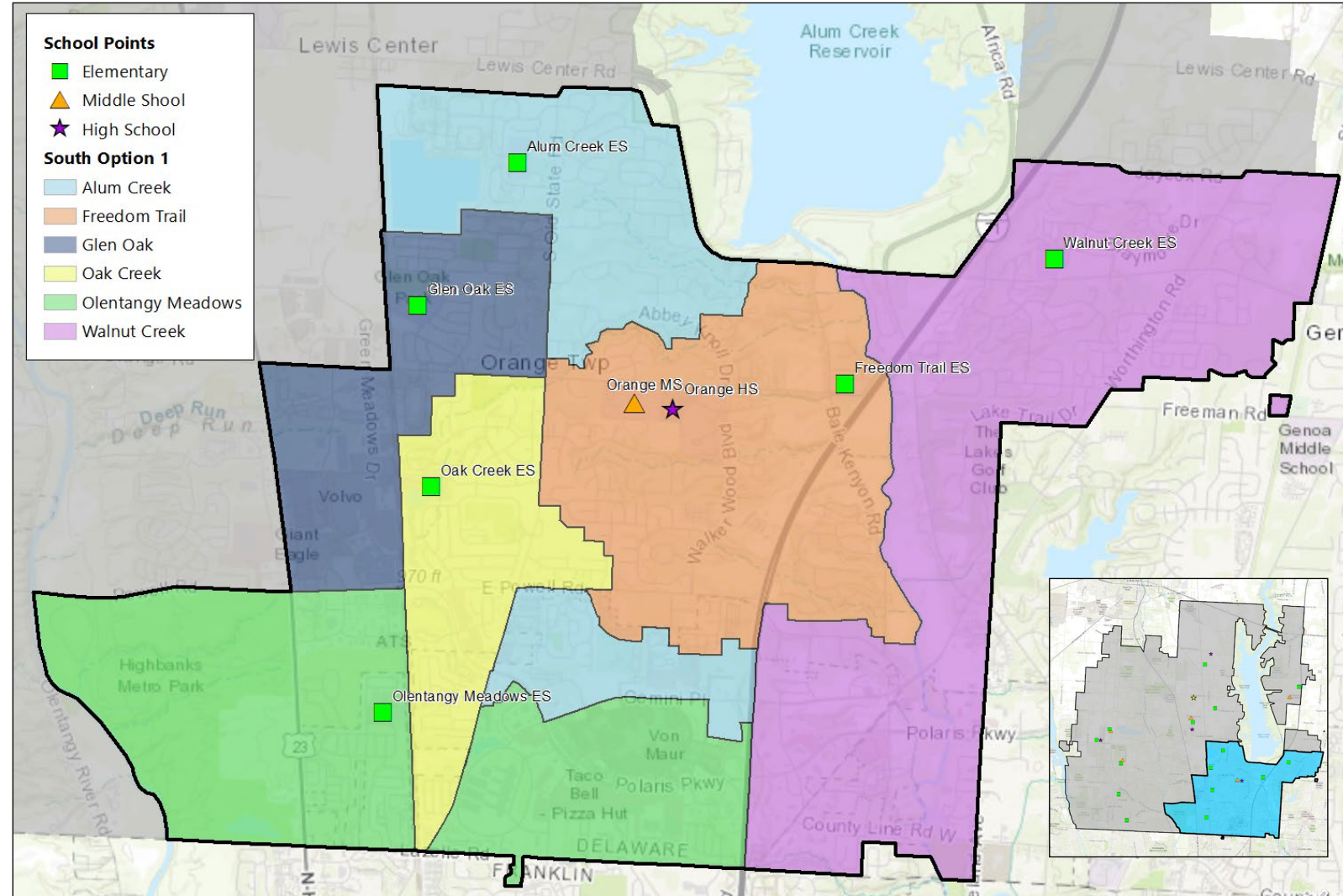
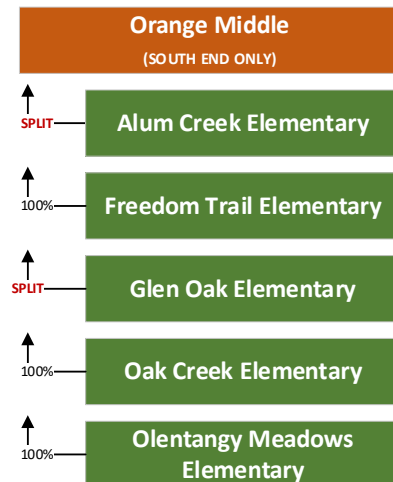
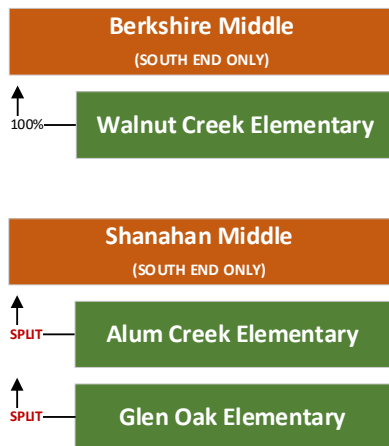


SOUTH OPTION 1

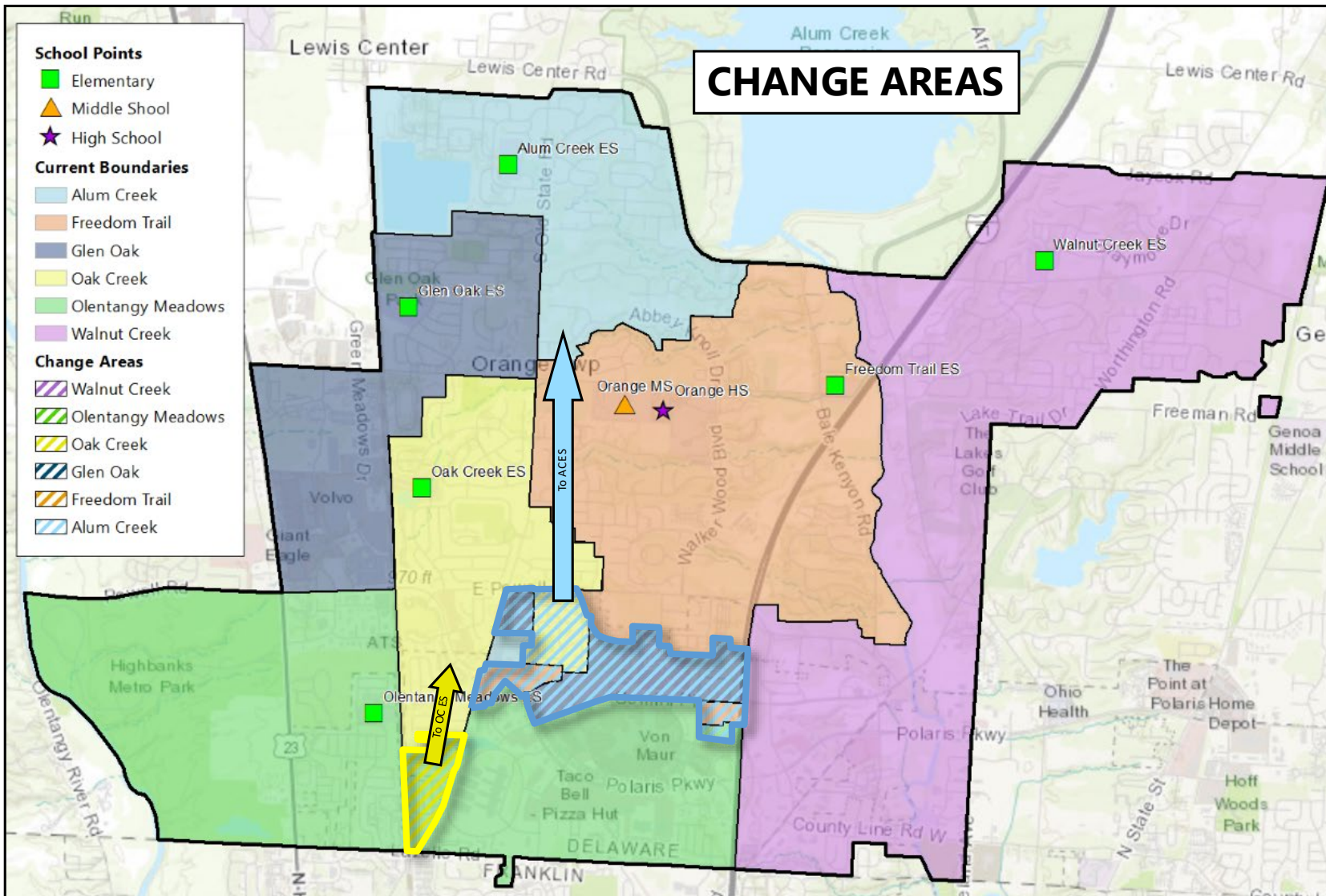
Highlights:

- Gemini Parkway corridor (including Prestwick Commons) moves to Alum Creek ES
- Olentangy Glade moves from Olentangy Meadows ES to Oak Creek ES
- Moves 294 K-5 students

SOUTH OPTION 1			
Boundary	Capacity	Enroll.	Util. %
Alum Creek	725	705	97%
Freedom Trail	650	557	86%
Glen Oak	650	567	87%
Oak Creek	650	630	97%
Olentangy Meadows	650	644	99%
Walnut Creek	650	665	102%



SOUTH OPTION 1



Benefits:

- Similar travel times for majority of students moving to Alum Creek ES- Alum Creek ES is right off of S Old State Rd; commute time is similar going to the elementary schools that are more embedded into neighborhoods
- Better balances enrollment among buildings
- Relieves Olentangy Meadows ES (currently 108%)

Challenges:

- Feeder splits at Glen Oak ES and Alum Creek ES (could be addressed during Middle School 6 redistricting process)
- Walnut Creek ES is slightly over-utilized (projected to decrease in enrollment over next few years)

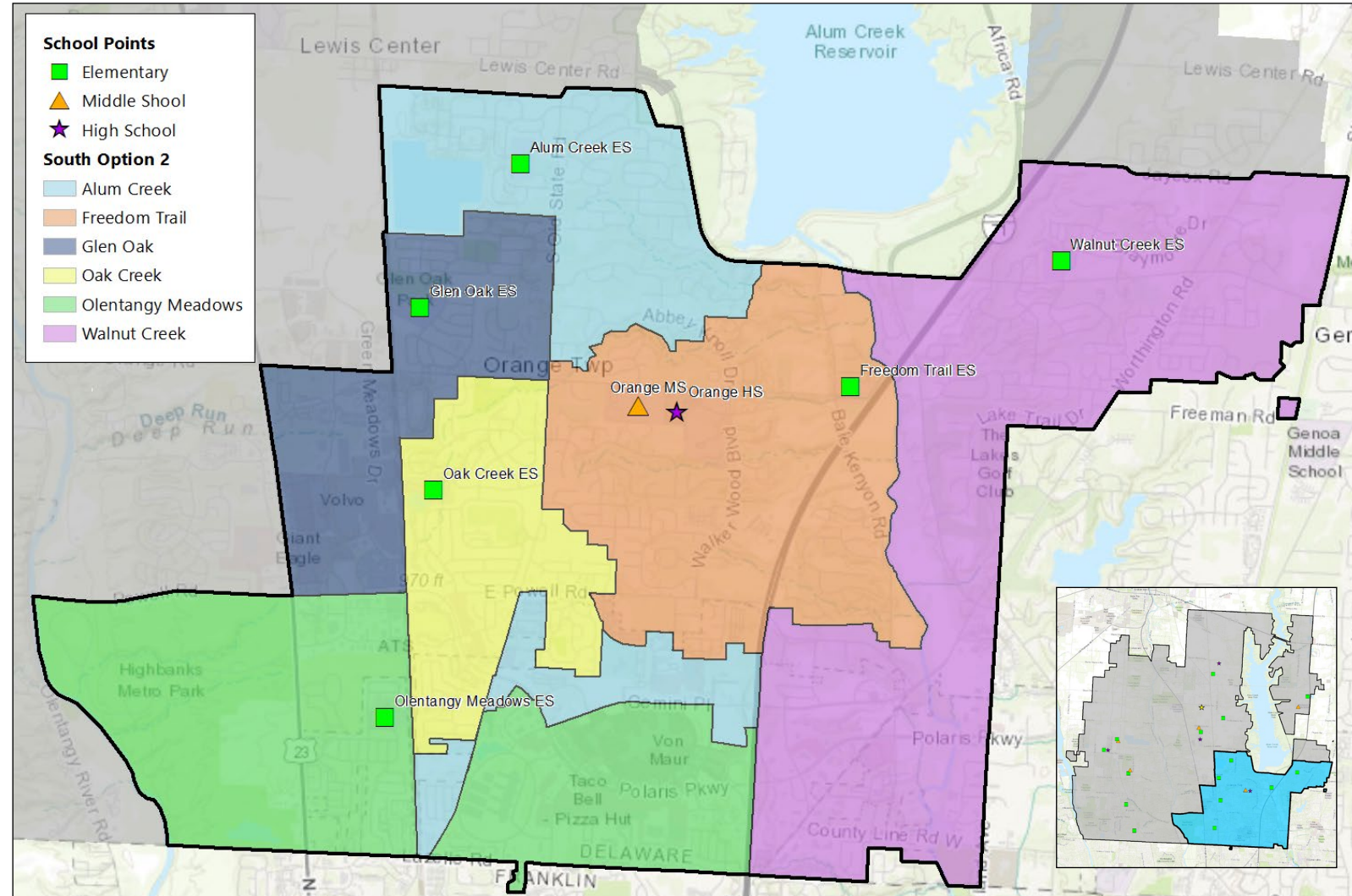
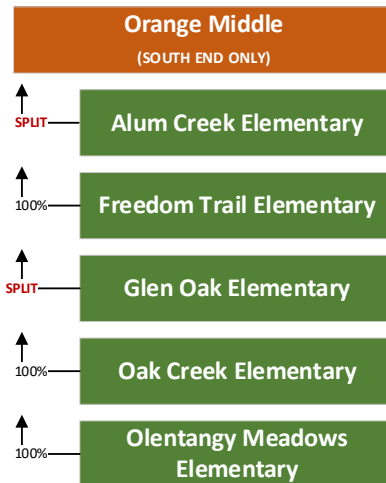
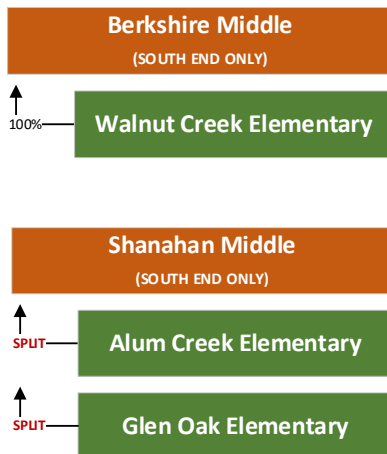


SOUTH OPTION 2

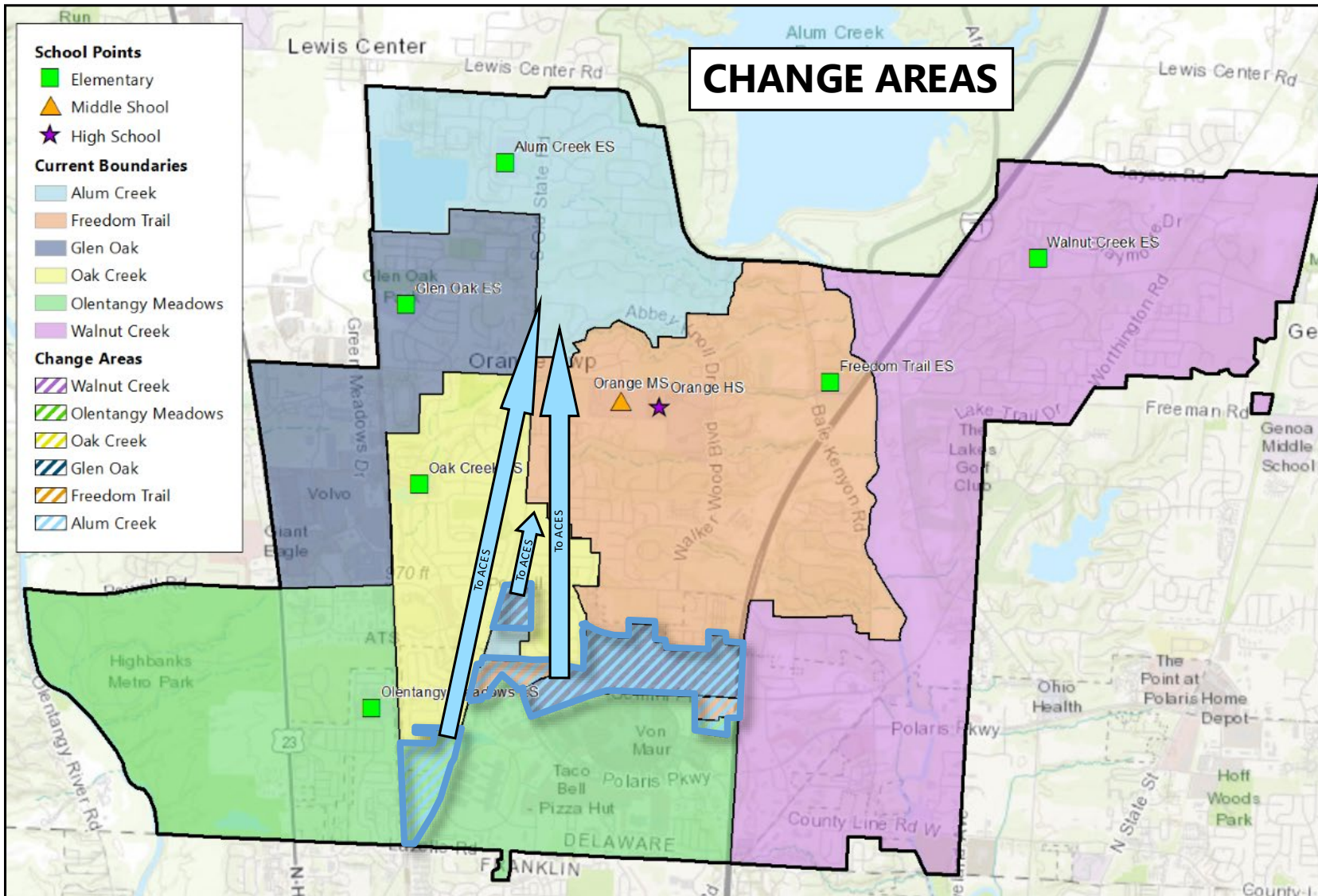
Highlights:

- Gemini Parkway corridor & Olentangy Glade move to Alum Creek ES
- Moves 193 K-5 students

SOUTH OPTION 2			
Boundary	Capacity	Enroll.	Util. %
Alum Creek	725	660	91%
Freedom Trail	650	557	86%
Glen Oak	650	567	87%
Oak Creek	650	675	104%
Olentangy Meadows	650	644	99%
Walnut Creek	650	665	102%



SOUTH OPTION 2



Benefits:

- Similar travel times for majority of students moving to Alum Creek ES- Alum Creek ES is right off of S Old State Rd; commute time is similar going to the elementary schools that are more embedded into neighborhoods
- Relieves Olentangy Meadows ES (currently 108%)

Challenges:

- Feeder splits at Glen Oak ES and Alum Creek ES (could be addressed during Middle School 6 redistricting process)
- Oak Creek ES is over-utilized at 104%
- Walnut Creek ES is over-utilized (projected to decrease in enrollment over next few years)

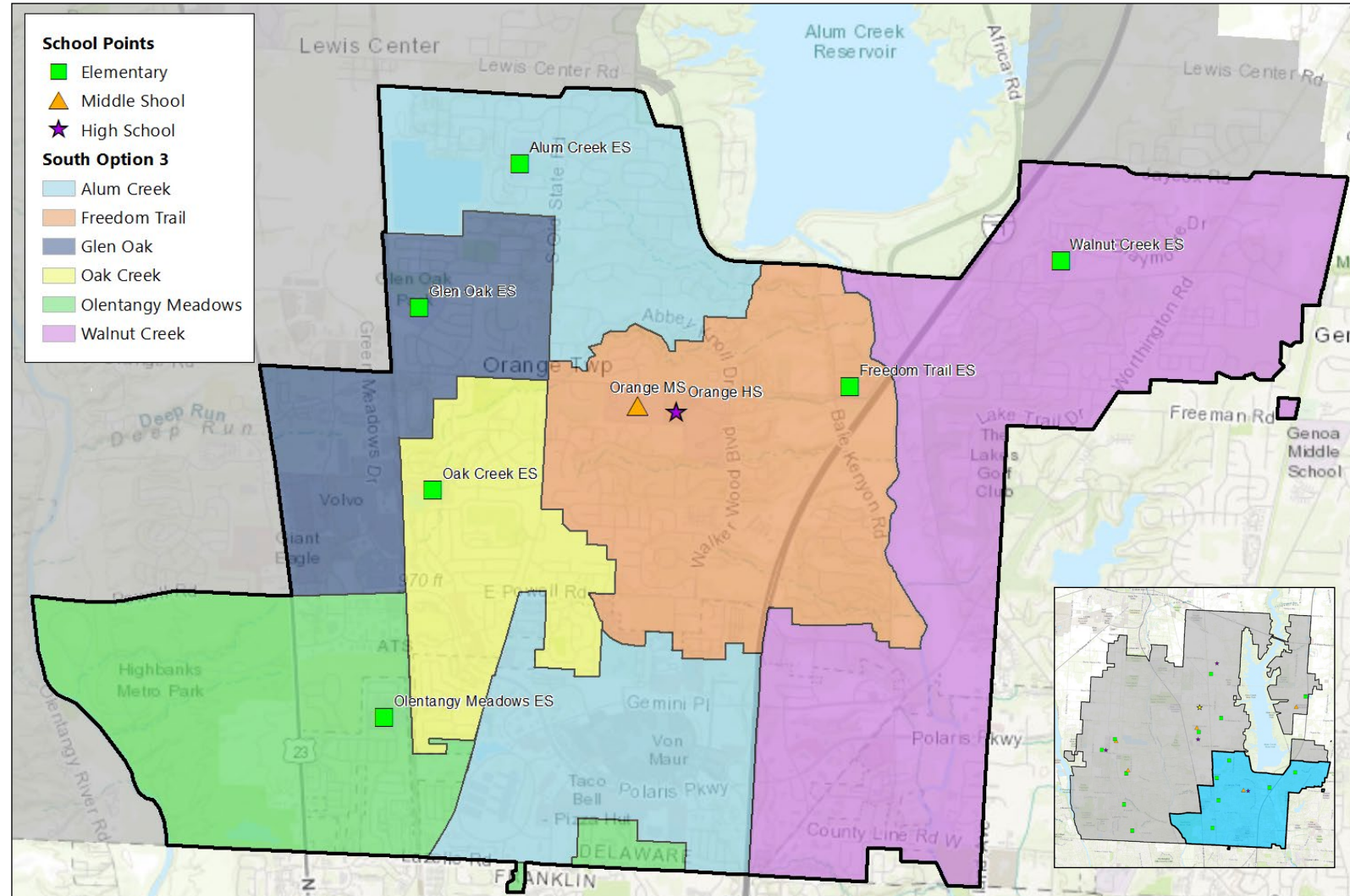
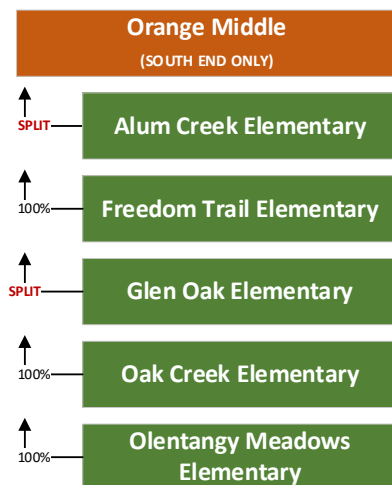
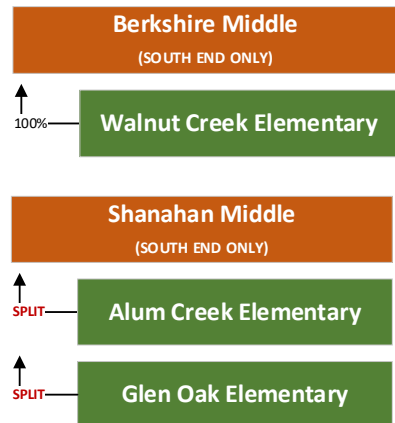


SOUTH OPTION 3

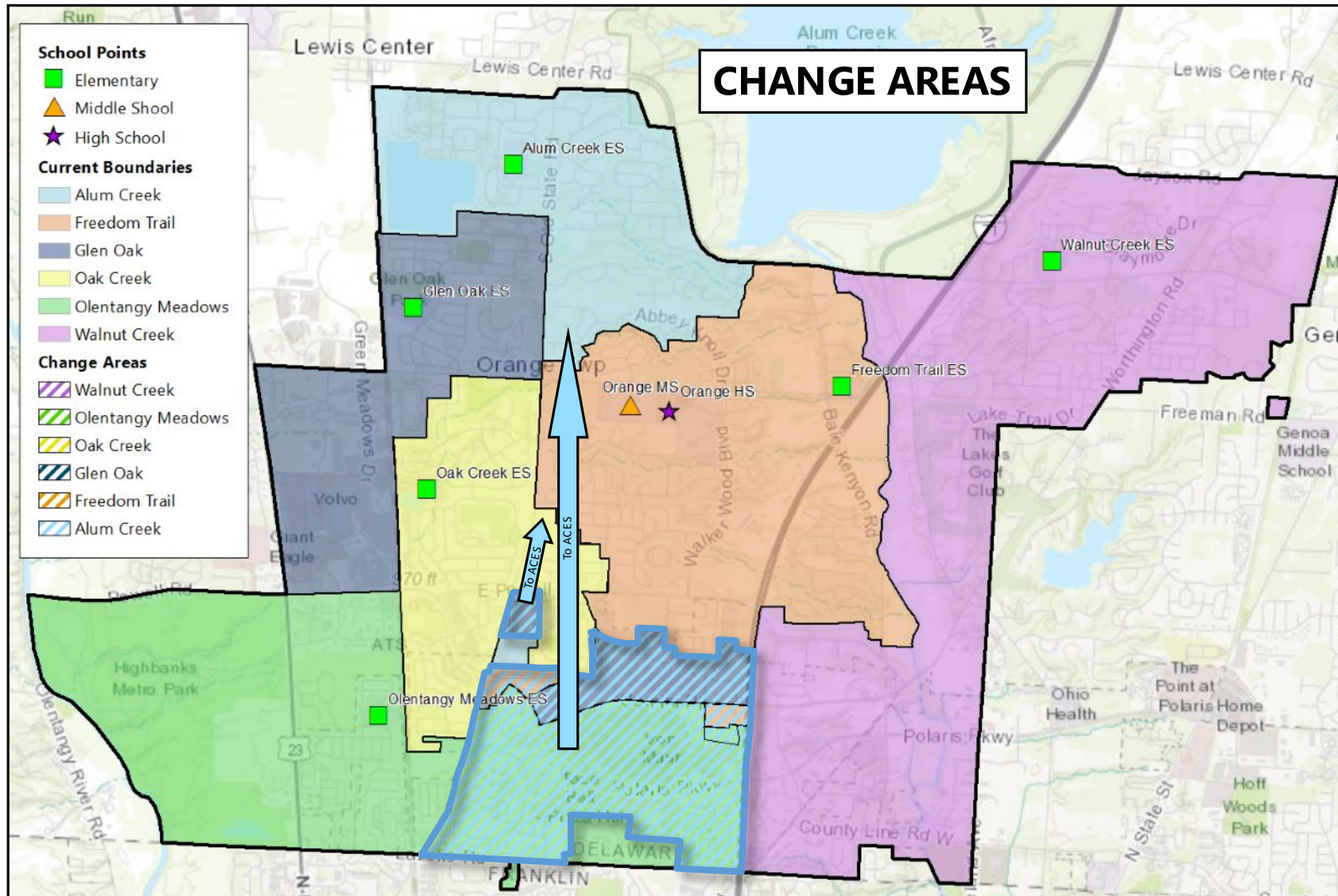
Highlights:

- Gemini Parkway corridor and majority of Polaris area move to Alum Creek ES
- Areas off of Lazelle Road that remain in the Olentangy Meadows ES boundary are stand-alone developments
- Moves 218 K-5 students

SOUTH OPTION 3			
Boundary	Capacity	Enroll.	Util. %
Alum Creek	725	685	94%
Freedom Trail	650	557	86%
Glen Oak	650	567	87%
Oak Creek	650	675	104%
Olentangy Meadows	650	619	95%
Walnut Creek	650	665	102%



SOUTH OPTION 3



Benefits:

- Similar travel times for majority of students moving to Alum Creek ES- Alum Creek ES is right off of S Old State Rd; commute time is similar going to the elementary schools that are more embedded into neighborhoods
- Relieves Olentangy Meadows ES (currently 108%)

Challenges:

- Feeder splits at Glen Oak ES and Alum Creek ES (could be addressed during Middle School 6 redistricting process)
- Oak Creek ES is over-utilized at 104%
- Walnut Creek ES is over-utilized (projected to decrease in enrollment over next few years)

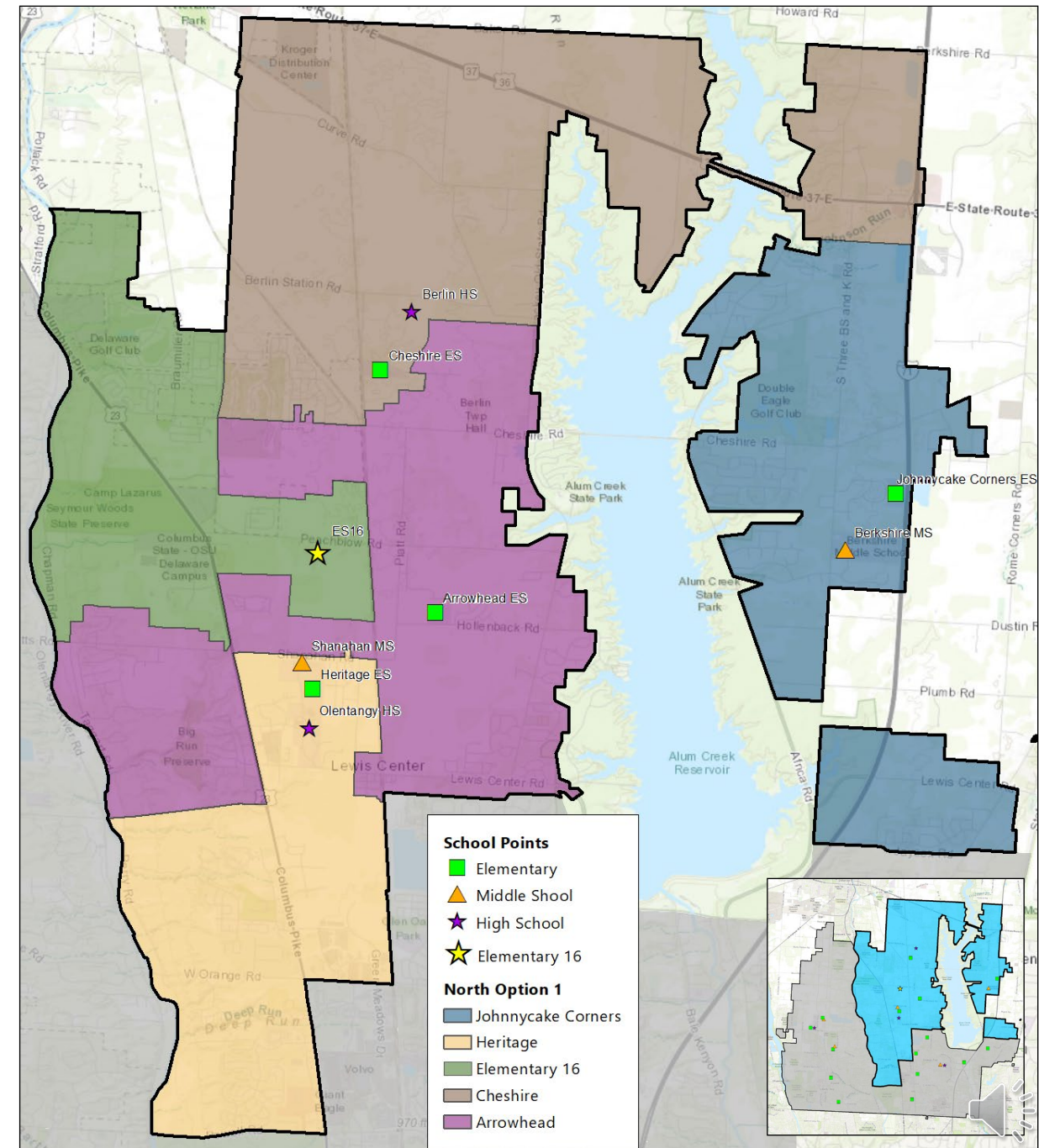


NORTH OPTION 1

Highlights:

- Area west of Glen Parkway (currently CES) moves to ES16
- Olentangy Falls & Olentangy Crossing move to Arrowhead ES
- Northeast corner of district (currently JCES) moves to CES
- Option reduces enrollment at currently over-utilized JCES (111%), CES (114%) & HES (107%).
- Arrowhead ES is utilized at 89%- new growth is pointed at this boundary (Evans Farms)
- Moves 822 K-5 students

NORTH OPTION 1			
Boundary	Capacity	Enroll.	Util. %
Elementary 16	650	542	83%
Arrowhead	725	643	89%
Cheshire	650	475	73%
Heritage	650	516	79%
Johnnycake Corners	650	670	103%



NORTH OPTION 1

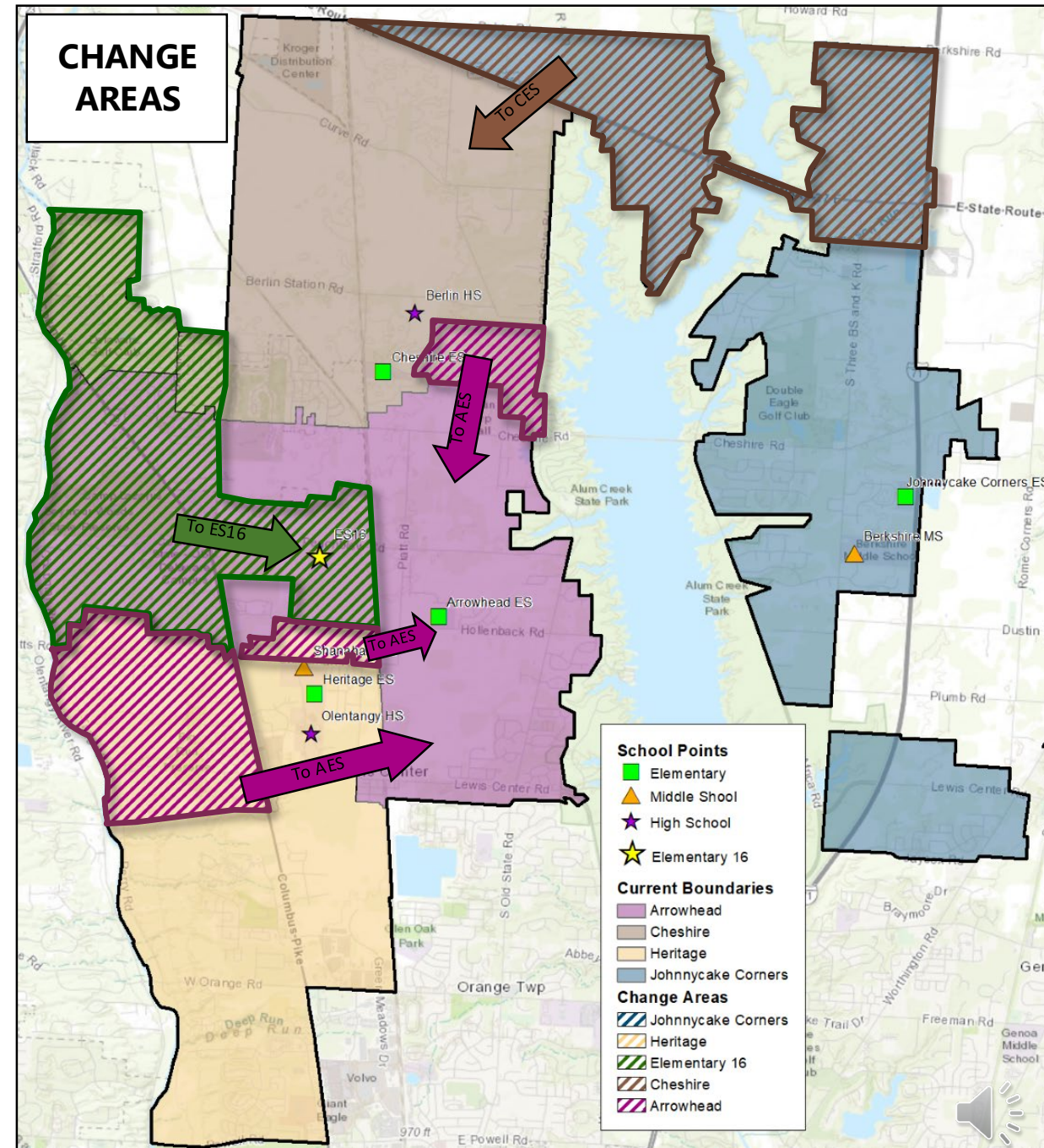
NORTH OPTION 1			
Boundary	Capacity	Enroll.	Util. %
Elementary 16	650	542	83%
Arrowhead	725	643	89%
Cheshire	650	475	73%
Heritage	650	516	79%
Johnnycake Corners	650	670	103%

Benefits:

- Room for growth in northern part of the district
- Fairly balanced utilizations except JCES

Challenges:

- Johnnycake Corners ES is over-utilized (projected to decrease in enrollment over next few years)

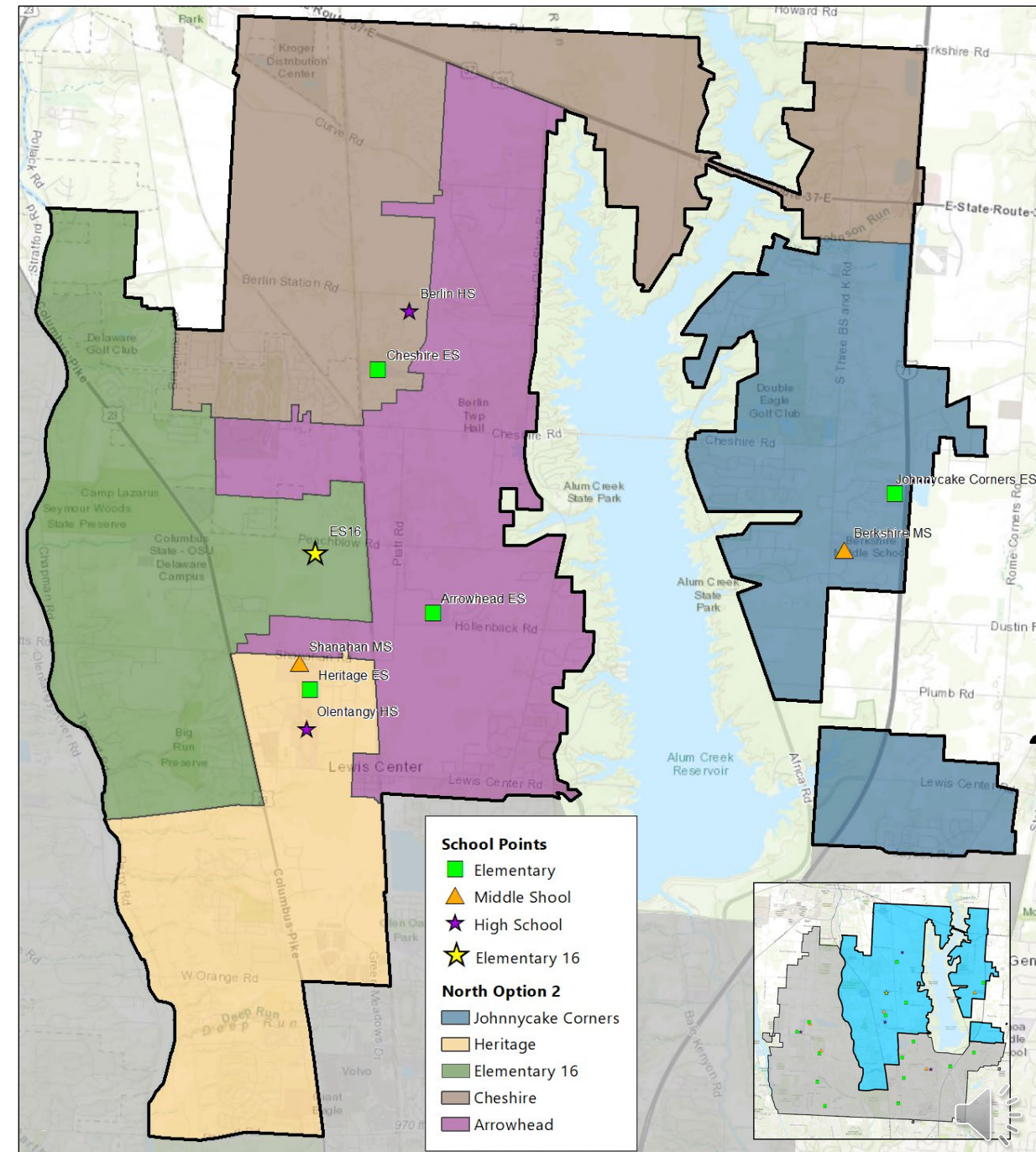


NORTH OPTION 2

Highlights:

- Area west of Braumiller (currently CES), Olentangy Falls, Olentangy Crossing, and Worthington Arms move to ES16
- Northeast corner of district (currently JCES) moves to CES
- Old State Road corridor between Cheshire Rd and 36/37 moves to Arrowhead ES
- Option reduces enrollment at currently over-utilized JCES (111%), CES (114%) & HES (107%)
- Arrowhead ES is utilized at 66%- new growth is pointed at this boundary (Evans Farms)
- Moves 753 K-5 students

NORTH OPTION 2			
Boundary	Capacity	Enroll.	Util. %
Elementary 16	650	590	91%
Arrowhead	725	479	66%
Cheshire	650	590	91%
Heritage	650	517	80%
Johnnycake Corners	650	670	103%



NORTH OPTION 2

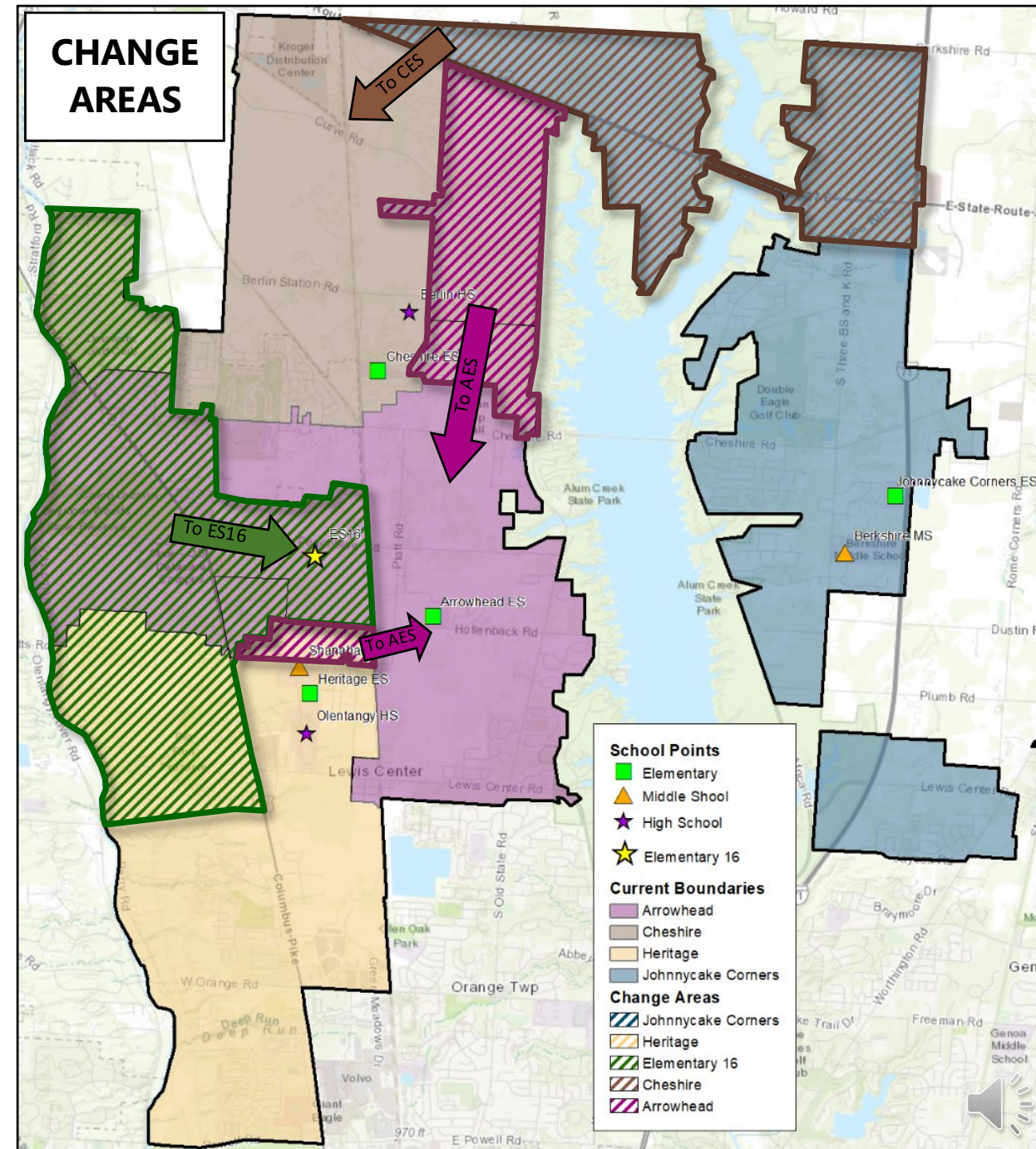
NORTH OPTION 2			
Boundary	Capacity	Enroll.	Util. %
Elementary 16	650	590	91%
Arrowhead	725	479	66%
Cheshire	650	590	91%
Heritage	650	517	80%
Johnnycake Corners	650	670	103%

Benefits:

- Room for growth in northern part of the district

Challenges:

- Johnnycake Corners ES is over-utilized (projected to decrease in enrollment over next few years)

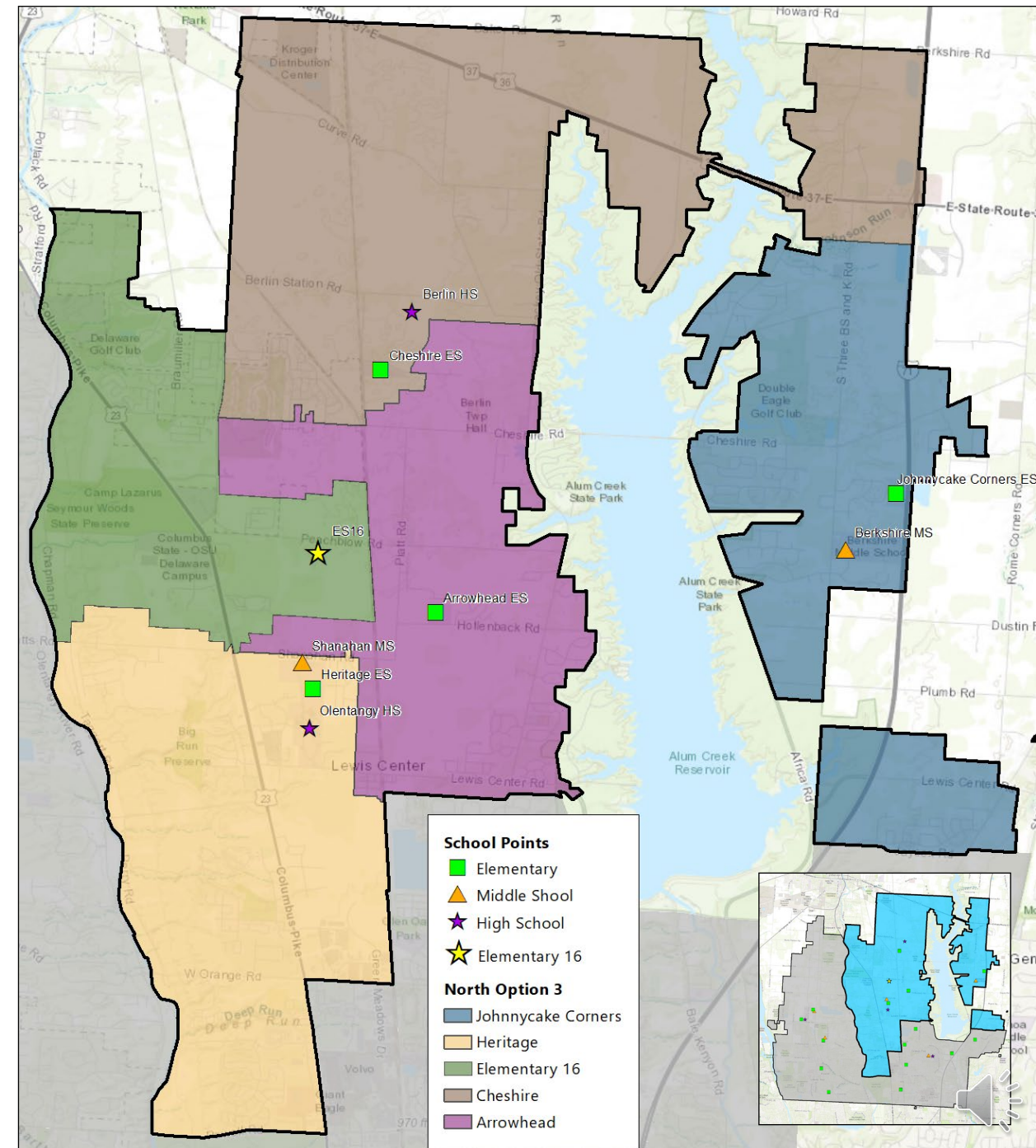


NORTH OPTION 3

Highlights:

- Area west of Glen Parkway (currently CES) and Worthington Arms move to ES16
- Northeast corner of district (currently JCES) moves to CES
- Heritage ES is nearly unchanged (other than growth areas northeast of the school)
- Arrowhead ES is utilized at 57%- new growth is pointed at this boundary (Evans Farms)
- Moves 689 K-5 students

NORTH OPTION 3			
Boundary	Capacity	Enroll.	Util. %
Elementary 16	650	589	91%
Arrowhead	725	416	57%
Cheshire	650	475	73%
Heritage	650	696	107%
Johnnycake Corners	650	670	103%



NORTH OPTION 3

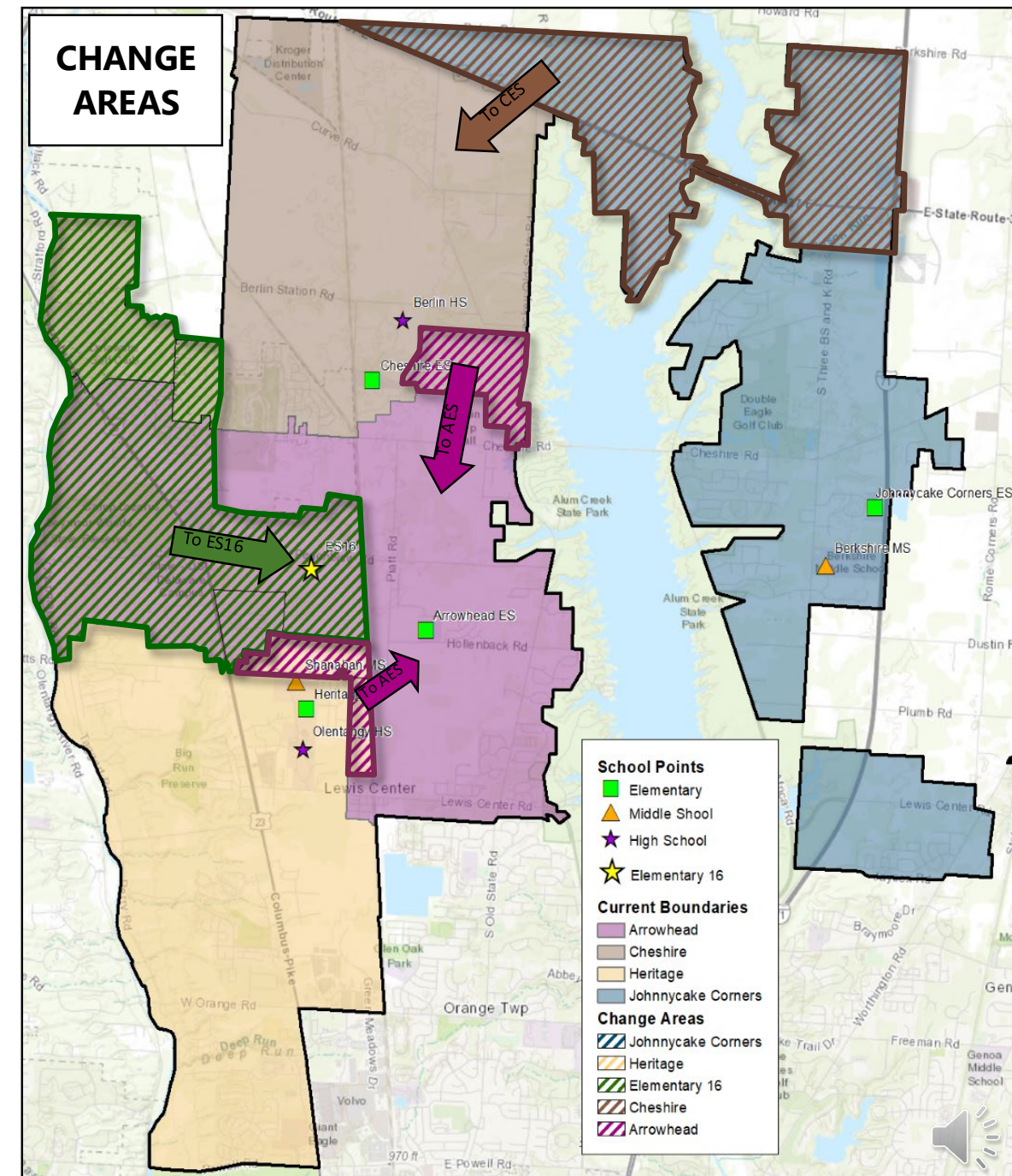
NORTH OPTION 3			
Boundary	Capacity	Enroll.	Util. %
Elementary 16	650	589	91%
Arrowhead	725	416	57%
Cheshire	650	475	73%
Heritage	650	696	107%
Johnnycake Corners	650	670	103%

Benefits:

- Room for growth in northern part of the district

Challenges:

- Johnnycake Corners ES is over-utilized (projected to decrease in enrollment over next few years)
- Some of the growth pointed at Heritage ES has been moved to Arrowhead ES, but Heritage ES is still over-utilized



MIDDLE SCHOOL CONCEPT 1

Highlights:

- Arrowhead ES splits between Berkshire MS & Shanahan MS
- ES16 splits between Shanahan MS & Hyatts MS
- Heritage ES feeds 100% to Shanahan MS
- Cheshire ES & Johnnycake Corners ES feeds 100% to Berkshire MS
- Moves 52 6-8 students

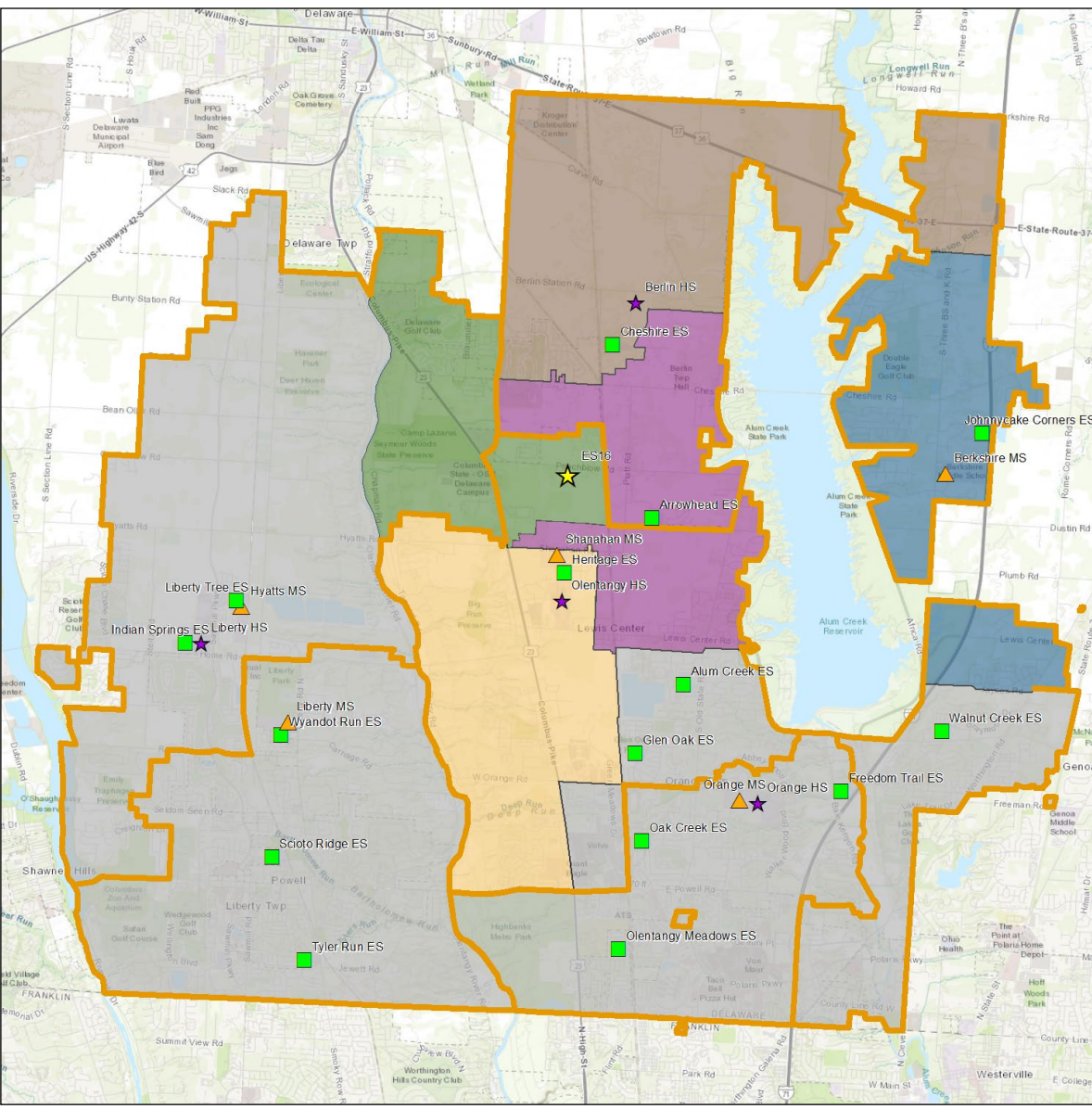
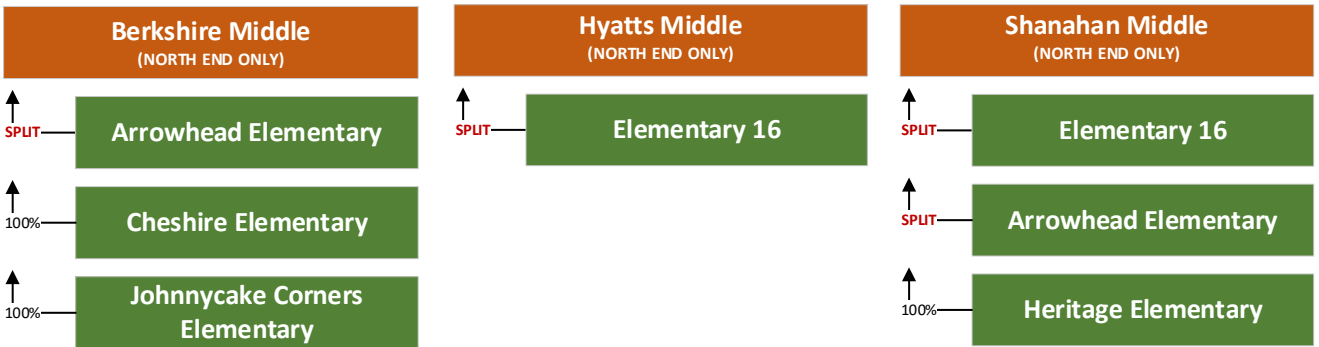
Benefits:

- Berkshire MS is under 100%

Challenges:

- Feeder splits at ES16 & Arrowhead ES
- Berkshire MS will need additional relief when MS6 is built

CONCEPT (VALUES SUBJECT TO CHANGE BASED ON NORTH OPTION)			
Boundary	Capacity	Enroll	Util %
Berkshire	1,100	1,087	99%
Hyatts	1,100	887	81%
Liberty	1,100	994	90%
Orange	1,050	1,062	101%
Shanahan	1,175	1,032	88%
MS SUBTOTAL	5,525	5,062	92%



MIDDLE SCHOOL CONCEPT 2

Highlights:

- ES16 splits between Shanahan MS & Hyatts MS
- Cheshire ES splits between Hyatts MS & Berkshire MS
- Arrowhead ES and Heritage ES feed 100% to Shanahan MS
- Johnnycake Corners ES feeds 100% to Berkshire
- Moves 192 6-8 students

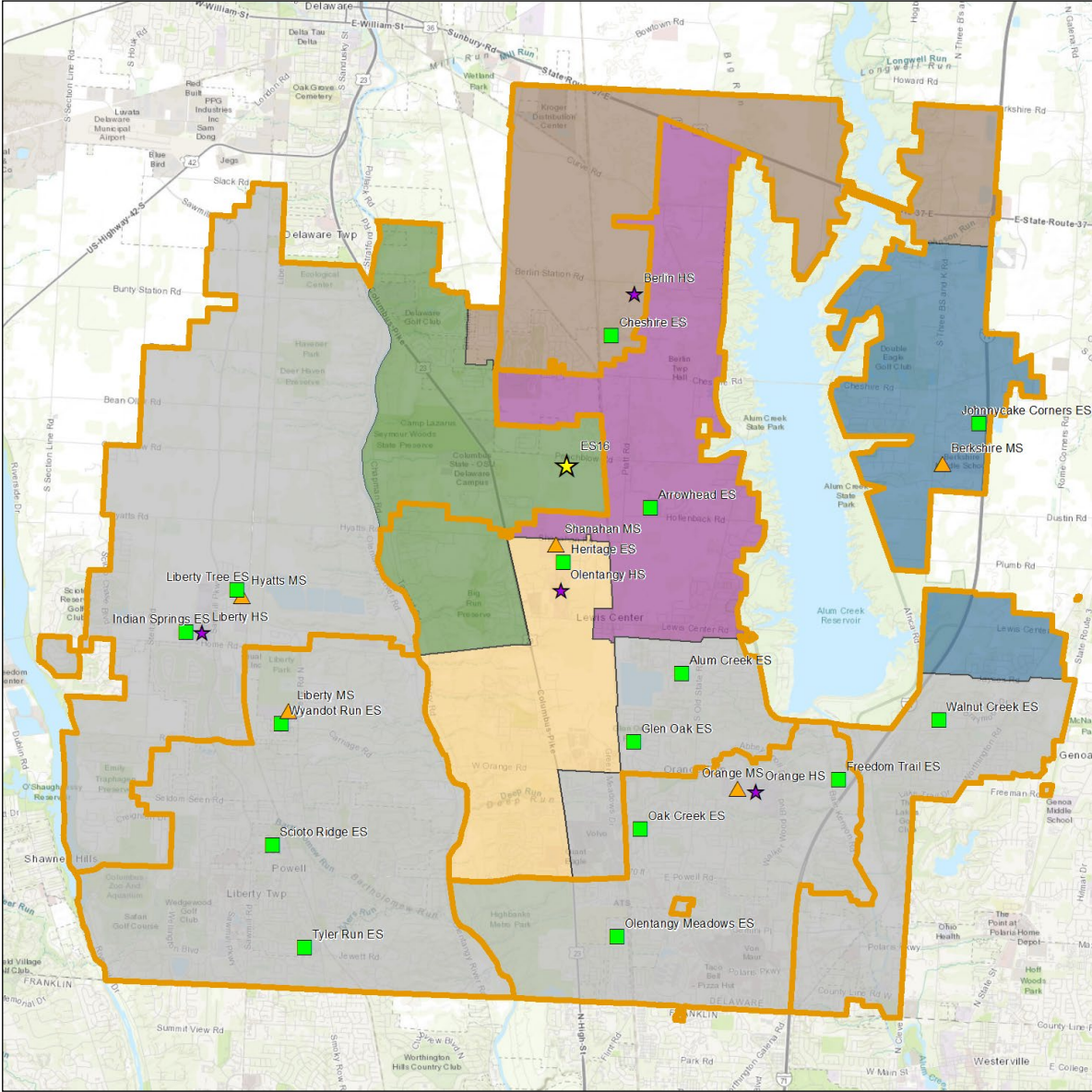
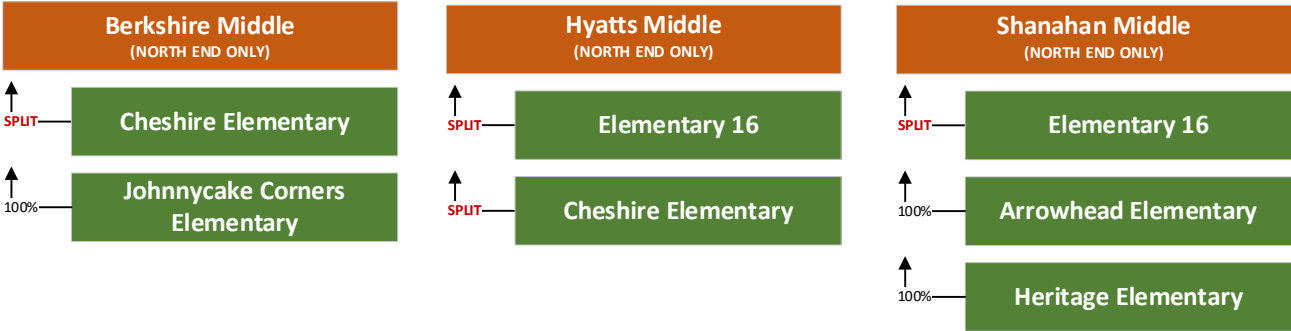
Benefits:

- Berkshire MS has some available space to take on projected growth
- More Shanahan students go to Berlin HS (better feeder split)

Challenges:

- Feeder splits at ES16 & Cheshire ES

CONCEPT (VALUES SUBJECT TO CHANGE BASED ON NORTH OPTION)			
Boundary	Capacity	Enroll	Util %
Berkshire	1,100	942	86%
Hyatts	1,100	936	85%
Liberty	1,100	994	90%
Orange	1,050	1,057	101%
Shanahan	1,175	1,133	96%
MS SUBTOTAL	5,525	5,062	92%



MIDDLE SCHOOL CONCEPT 3

Highlights:

- Arrowhead ES splits between Shanahan MS & Berkshire MS
- ES16 feeds 100% to Hyatts MS
- Heritage ES feeds 100% to Shanahan MS
- Johnnycake Corners ES and Cheshire ES feed 100% to Berkshire
- Moves 52 6-8 students

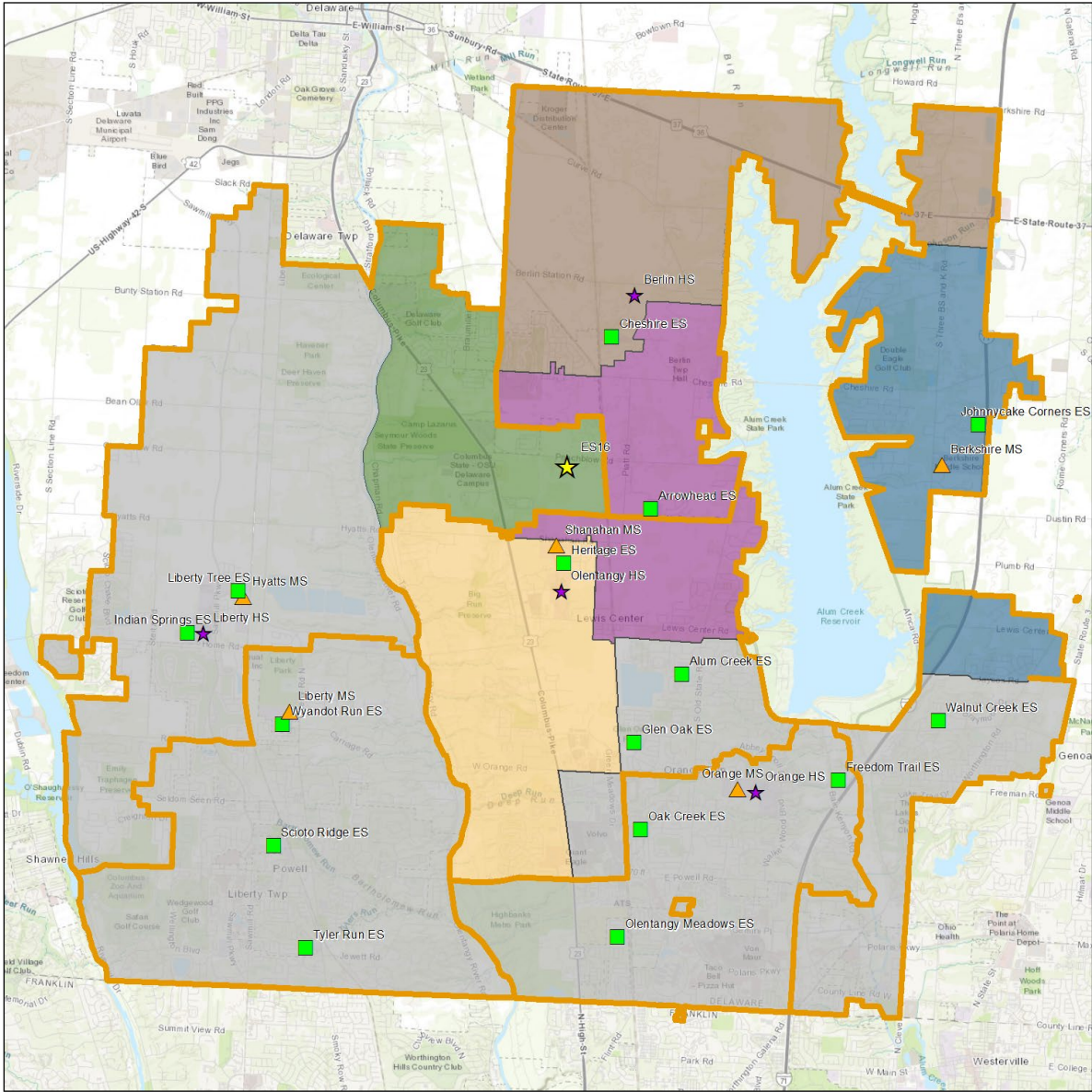
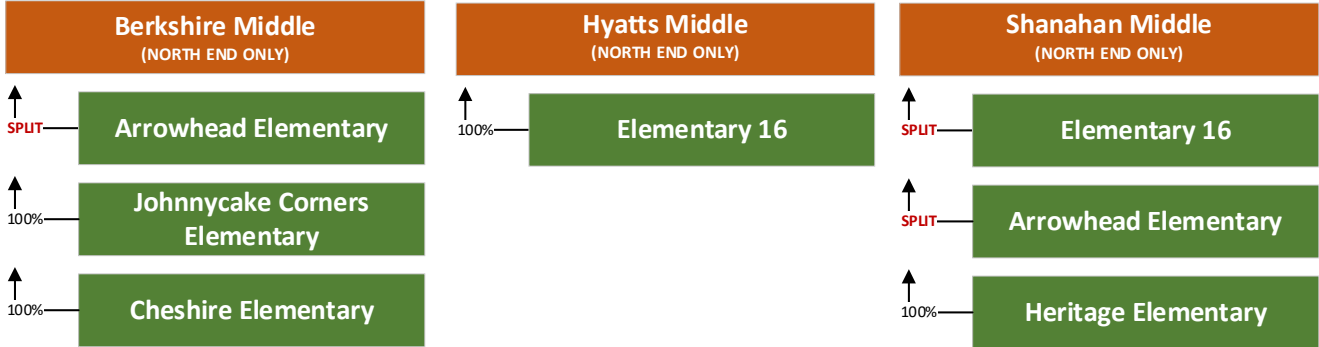
Benefits:

- Berkshire MS is under 100%

Challenges:

- Feeder splits at Arrowhead ES
- Berkshire MS will need additional relief when MS6 is built

CONCEPT (VALUES SUBJECT TO CHANGE BASED ON NORTH OPTION)			
Boundary	Capacity	Enroll	Util %
Berkshire	1,100	1,085	99%
Hyatts	1,100	936	85%
Liberty	1,100	994	90%
Orange	1,050	1,062	101%
Shanahan	1,175	985	84%
MS SUBTOTAL	5,525	5,062	92%



MIDDLE SCHOOL CONCEPT 4

Highlights:

- Arrowhead ES & Heritage ES feed 100% to Shanahan MS
- ES16 feeds 100% to Hyatts MS
- Johnnycake Corners ES and Cheshire ES feed 100% to Berkshire
- **This concept provides 100% feeders to middle school only if there are no changes made to relieve Heritage ES, otherwise there will be a split at Shanahan MS**
- Moves 146 6-8 students

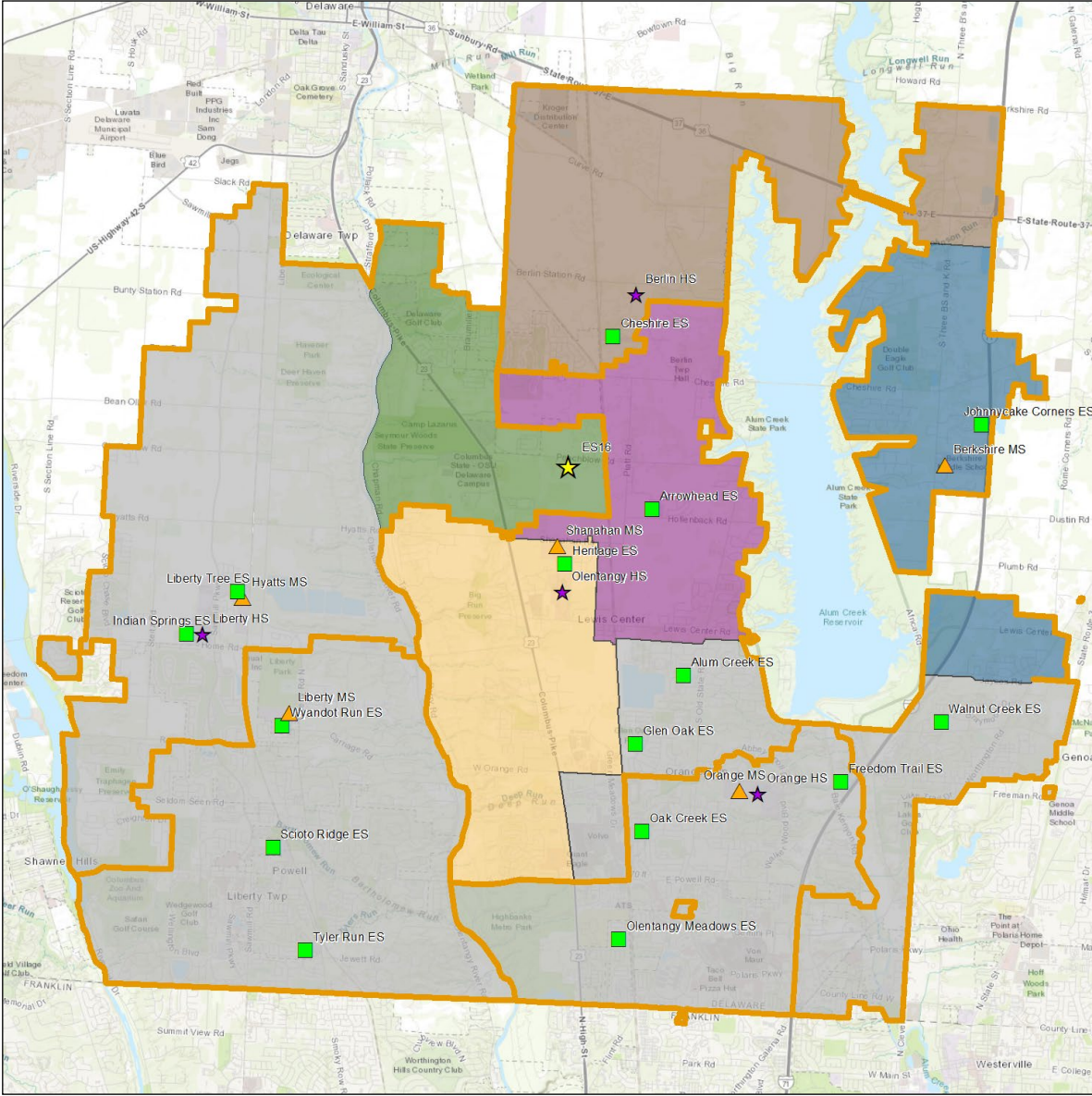
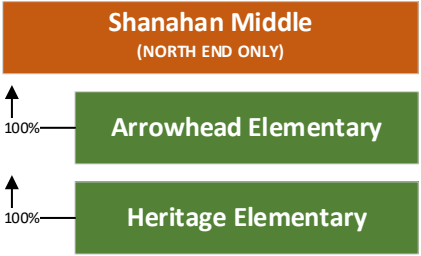
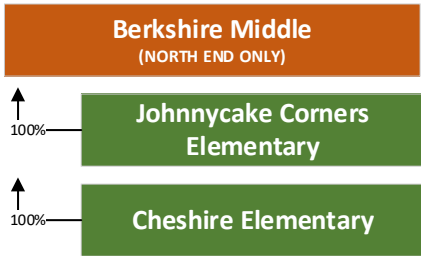
Benefits:

- 100% feeders to middle school
- Berkshire has some available space to take in projected growth

Challenges:

- Option can not provide 100% feeders to all north schools if changes are made to relieve Heritage ES

CONCEPT (VALUES SUBJECT TO CHANGE BASED ON NORTH OPTION)			
Boundary	Capacity	Enroll	Util %
Berkshire	1,100	993	90%
Hyatts	1,100	936	85%
Liberty	1,100	994	90%
Orange	1,050	1,062	101%
Shanahan	1,175	1,077	92%
MS SUBTOTAL	5,525	5,062	92%



NEXT STEPS: COLLECTING FEEDBACK



NEXT STEPS: COLLECTING FEEDBACK

- The online survey will be open through Sunday, February 28th
 - This is not a vote!
- If you would like to participate in an online Q&A session, please find the link to the sign-up on the survey.
 - Saturday, February 20th:
 - 12:00pm (North region options)
 - 1:00pm (South region options)
 - 2:00pm (Middle school concepts)
- The committee will review your feedback and make a recommendation to the Superintendent.
- There will be a video announcement on this process and the recommendations on March 26th





OLENTANGY SCHOOLSSM

THANK YOU

