

## Highlights

### Parent Art Evening -

Open for viewing until Feb. 18th, 2021



### Meditating with Ann-Katrin

Every Monday Feb. 1st-22nd 2021,  
8.30 - 9.30am

### Wednesday Walks

have been cancelled for this week  
and the next. Please contact Lama  
at 9225 9000 for updates

PARENT ART EVENINGS

STAY SAFE



Mask Cases- Pink, Blue, Black , Clear  
& Mask holders@ 1 omr each  
Order at [PTACom@abaoman.org](mailto:PTACom@abaoman.org)



Share a skill, Email now!  
[ptacochair@abaoman.org](mailto:ptacochair@abaoman.org)

On Monday, **22nd Feb,**  
**8.30 am**  
Ann-Katrin will hold her  
last meditation session.  
For this session she will  
guide us in a **Calm Focus**  
**Meditation**. She will as  
well teach **short**  
**Energizing Body and**  
**Mind Meditation** practise  
to round up the meditation  
month in Beezy Monday.



Click [here](#) to join the Beezy Mondays sessions

Introducing virtual sessions of 30-40 mins every Monday. Volunteers from the community share their expertise on Physical fitness, Emotional wellbeing, Recipes from kitchen across the world, Arts & Crafts and much more!



## PTA PRESENTS



IN ASSOCIATION WITH



PRESENTS

## ART-E-FECT

BY ABA ARTISTS

FEBRUARY 10<sup>TH</sup> - 16<sup>TH</sup>



SAT - THU: 10AM-9PM  
FRI: 4PM-9PM

WATER -FRONT  
Level 1

+968 9431 7171

IN RESPONSE TO  
REQUESTS  
**EXTENDED**  
UP TO FEB. 18TH 2021

Virtual Exhibition coming soon!

## IN CASE YOU MISSED IT

Ele. School will also move to the Al Irfan  
campus with MS & HS.

### Online Q&A session with HOS

reg Al Irfan campus and the moving of Ele. school

**Wednesday, February 17th at 6 pm**

Link will be sent by school on Wednesday morning

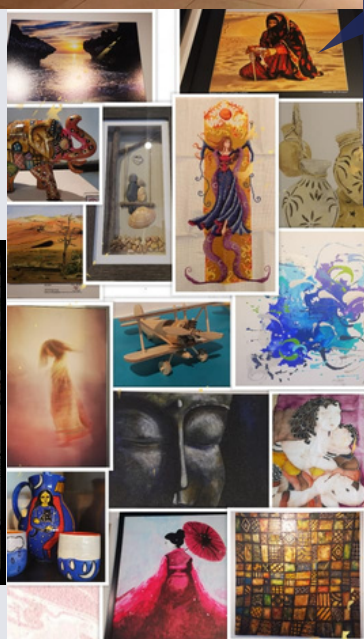
### NESA Parents as Partners 2.0 Webinar Series

Webinars addressing child development and helps to  
explore ways to support your child as a learner. Find  
out more about the series and how to sign up [here](#)





15 Artists, Over 100 Art works and spectrum of techniques - all under one banner -  
**ART-E-FTECT** - Now until 18th Feb...  
 Event not to be missed!



Great support from CAS students in the Art event too!!  
 Thank you!

More pictures & Video of the event to follow



*Hammam & near WDO*



"We had over 30 people sign up to hike last week. We have reached almost 60 members of the hike club."

How do you take such a large group hiking?  
 Split them in two...a difficult hike and an easy hike.

Our easy hike was at Hammam.

A big thank you to Charis, who runs another hike group, for taking the other half of the group on a difficult hike near



[Click here to view more pictures](#)

