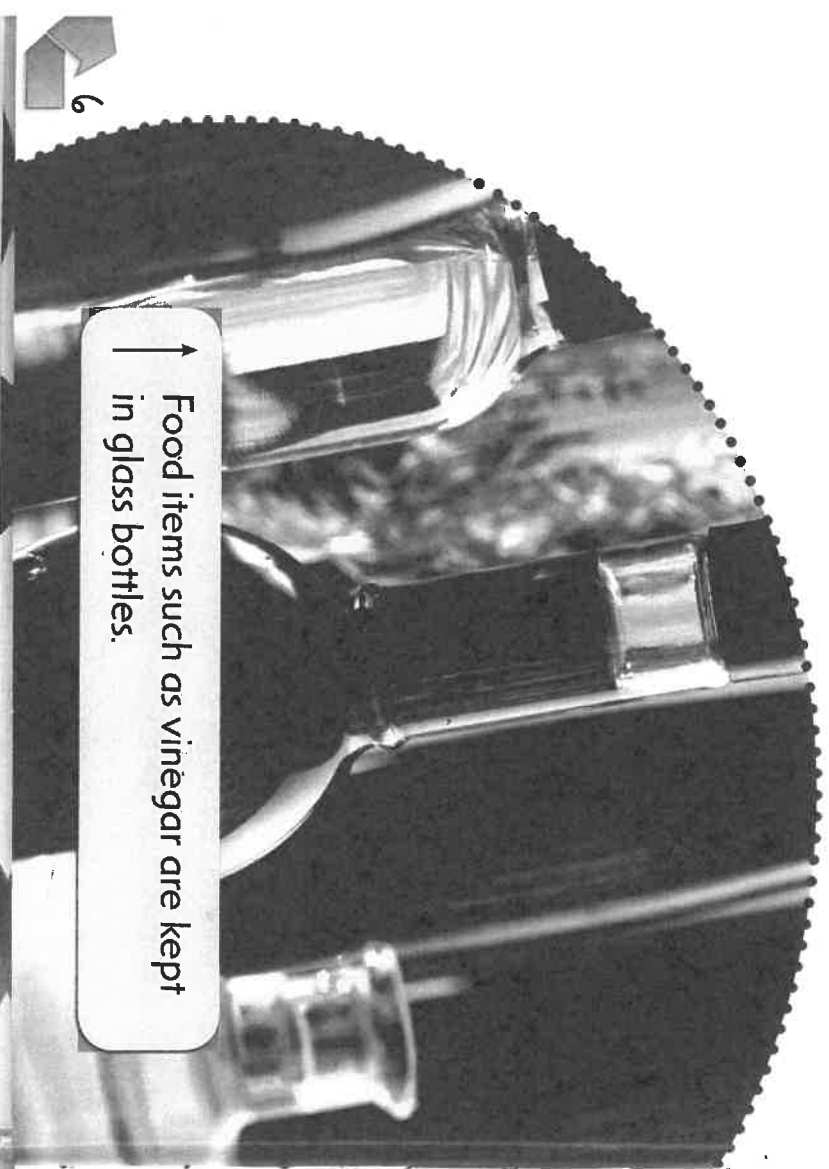
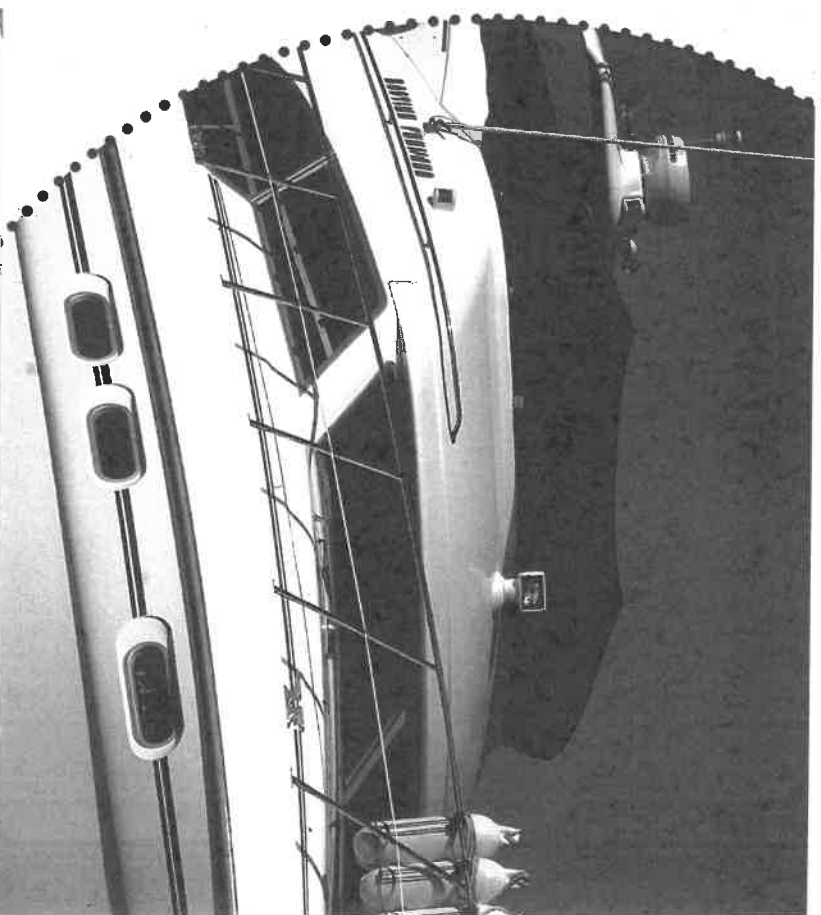


What is made of glass?

Many foods and drinks are stored in glass bottles. Plates, cups, drinking glasses, and cookware are often made of glass. Pottery is sometimes **glazed** with a thin layer of glass.



↑
Food items such as vinegar are kept in glass bottles.



↑
Boats can be made of fibreglass. Fibreglass is a mixture of glass and plastic.

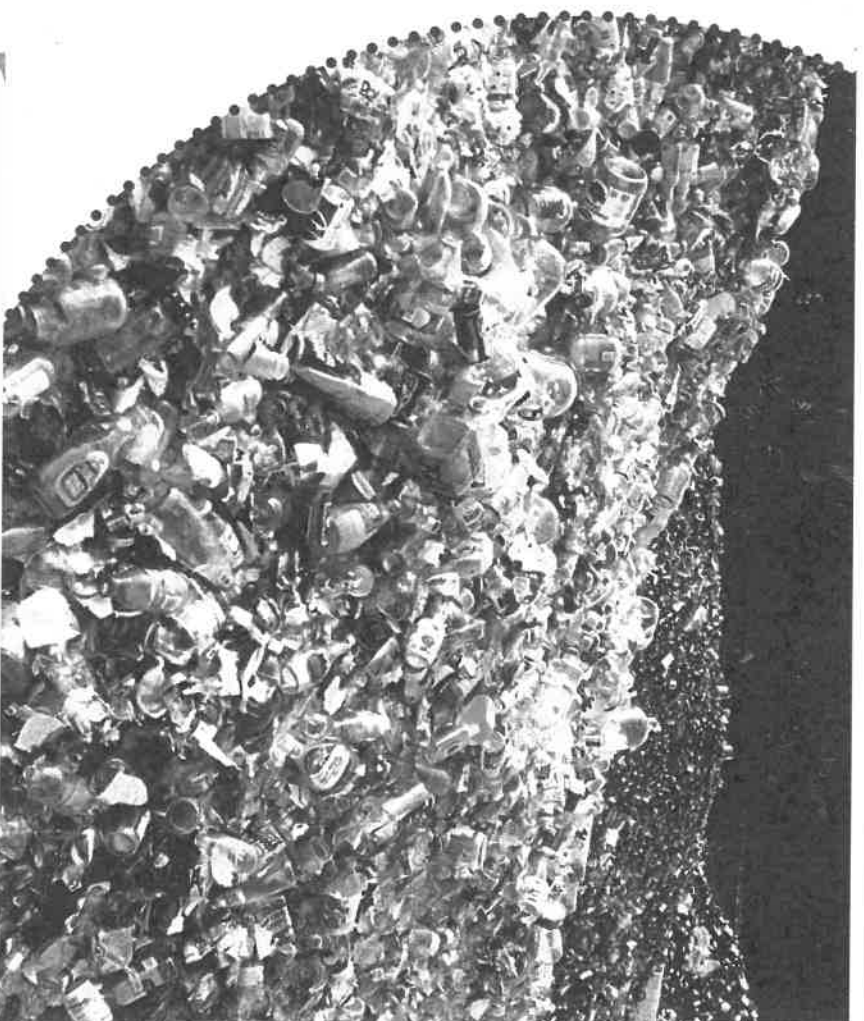
Small items such as light bulbs are made of glass. Large items such as windows, mirrors, and some doors are also made of glass.

What is glass waste?

Glass is a strong, clear material that is used to make items such as windows, bottles, and containers. Glass is a useful material, but sometimes it is wasted.



↑
Food items are often stored in glass jars.



Glass waste ends up at **landfill sites** with other materials.
↑

Glass waste is glass that is thrown away. If glass is reused or **recycled**, it can be used over and over again.



Where does glass come from?

Glass is made from sand, soda ash, and lime. Sand comes from **dunes**, beaches, and the ocean floor. Lime is removed from limestone rock. Soda ash comes from a mineral rock called trona.

Sand is rock that has broken into tiny pieces over time.

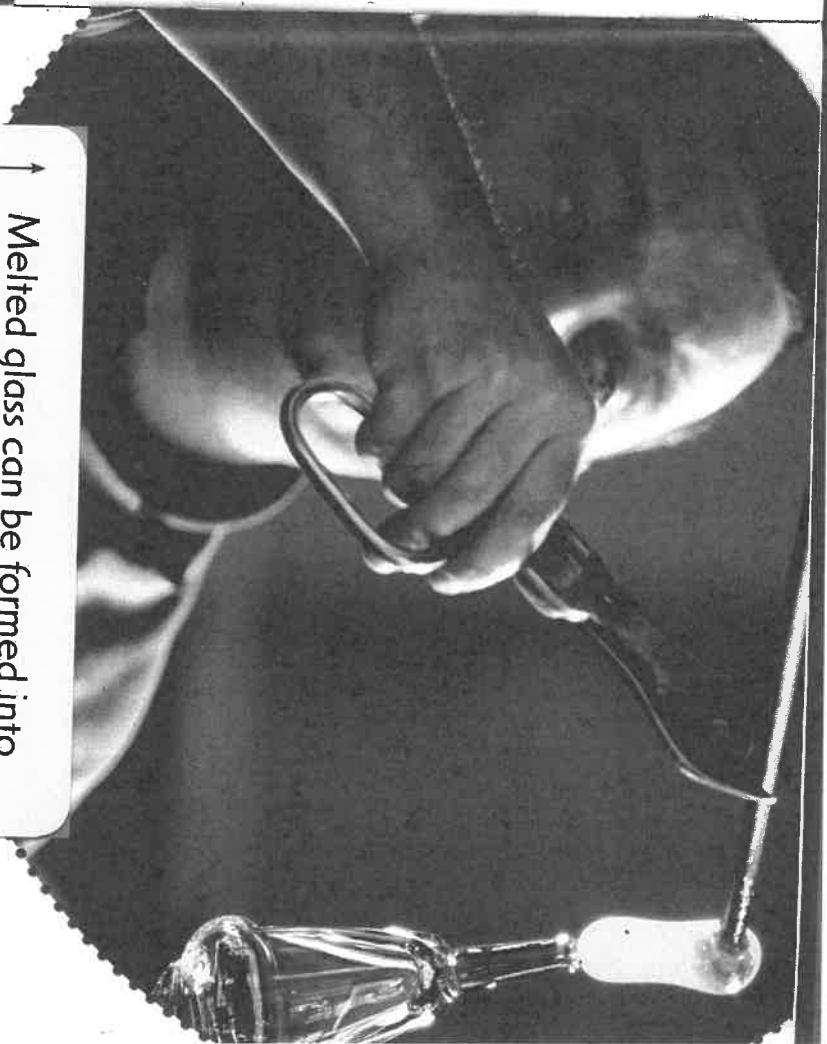


8

Melted glass can be formed into many shapes while it is hot.



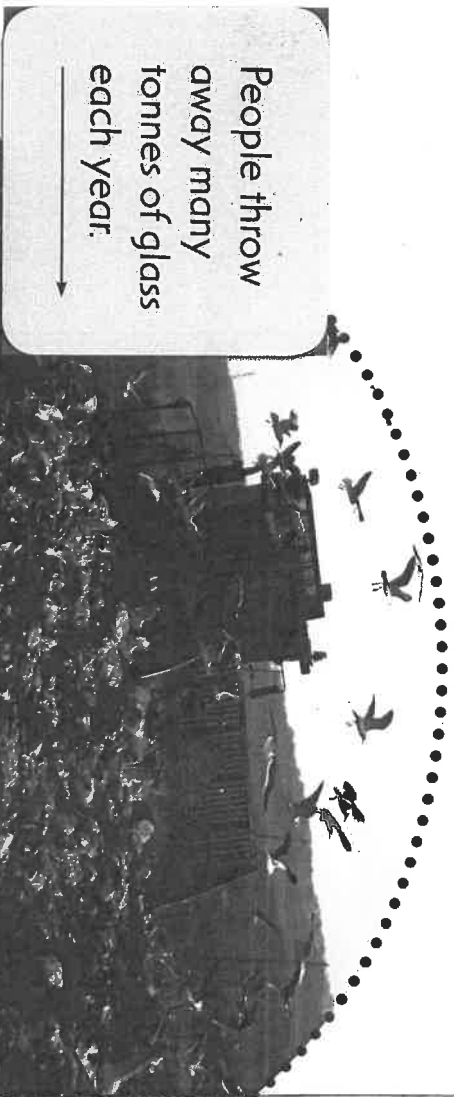
Glass is made in **factories**. The sand, soda ash, and lime are melted and made into glass. **Fuels** such as coal, oil, or natural gas are used to heat the mixture.



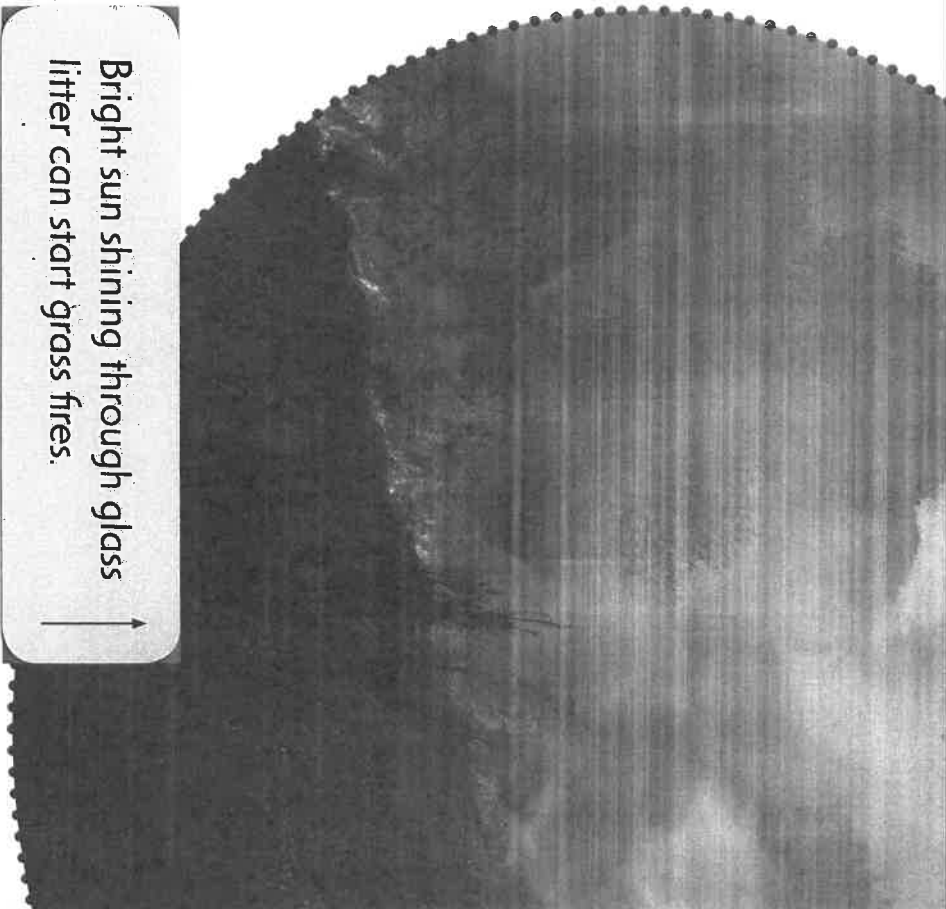


What happens when we waste glass?

When glass is thrown away, it is taken to a **landfill site**. Tonnes of glass are buried in landfills. Glass bottles in a landfill could take up to a million years to rot away.



People throw away many tonnes of glass each year. →



Bright sun shining through glass litter can start grass fires. →

Class **litter** is dangerous. People and animals can get cut by pieces of broken glass. Mosquitoes can lay their eggs in glass bottles and spread diseases.