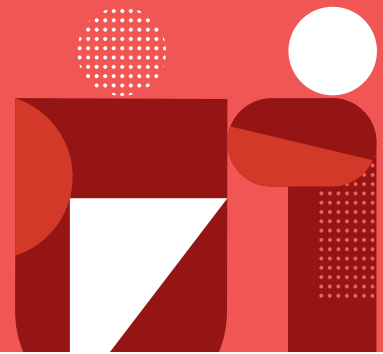


Tuition and Fee Information

Academic Year 2021-2022



International High School offers two payment plans designed to meet the budgetary needs of our families. The FACTS Plan utilizes the services of FACTS Tuition Management Company to offer monthly payment options. The Advance Plan offers a discount for cash payment. Families must select a plan at the time of enrollment. There are two non-refundable fees due with the enrollment agreement in order to reserve a student's space in our school: a \$1,000 Tuition Deposit, which is credited towards tuition, and a one-time **\$2,000 New Student Enrollment Fee**.

Advance Plan

\$48,790

One annual payment to International High School due by June 1, 2021

FACTS Plan

\$50,390

Tuition divided into 10 monthly payments (July 2021 through April 2022) through FACTS Tuition Management Company

International High School makes every effort to limit additional fees to voluntary or extracurricular activities, as well as certain consumables. These charges will be billed monthly.

Financial Aid Limited funds are available each year to provide financial assistance to families that have demonstrated a financial need. Application forms are available on our website: www.internationalsf.org under Admissions. All information submitted is handled confidentially. Families should inquire about this option as soon as they apply to the school due to the limited time frame to submit requests.

French National Scholarships French nationals enrolled in the French program may be eligible for scholarships offered by the French Government. Requests must be submitted by the deadline determined by the French Consulate. For information, contact the French Consulate at 415-616-4913 or visit their website at www.consulfrance-sanfrancisco.org

The Administrative Services Staff is available to answer questions and offer assistance with payment options and funding alternatives, as well as resolve billing matters related to student accounts. For information regarding financial assistance programs and FACTS Tuition Management, please contact: **Office of Administrative Services** ● 415-558-2032 ● Fax: 415-558-2033 ● or adminservices@frenchamericansf.org

Tuition is prorated on a monthly basis if a student joins International after the beginning of the academic year. Payments normally due by this date must accompany the enrollment agreement.

Please note that the only installment method of payment accepted by the Office of Administrative Services for tuition and fee payment is FACTS. This service provides automatic deduction from a checking or savings account for annual tuition and fixed monthly fees. See the FACTS brochure or visit their website at www.factsmgt.com for general program information.

Should there be a failure to maintain timely payments per the financial arrangements agreed upon with International, finance charges may be assessed on any past due balance. A \$20 charge will be assessed for each returned check. On the first day of school, a student may not be admitted to class unless at least 20% of the annual tuition and the Enrollment Fee (if applicable) have been paid. Students may not be re-enrolled for the following school year while there are delinquent amounts outstanding.