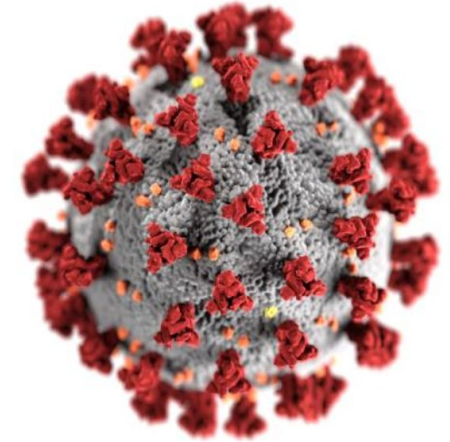


# **COVID-19 MITIGATION AT OES**

*FEBRUARY 10, 2021*

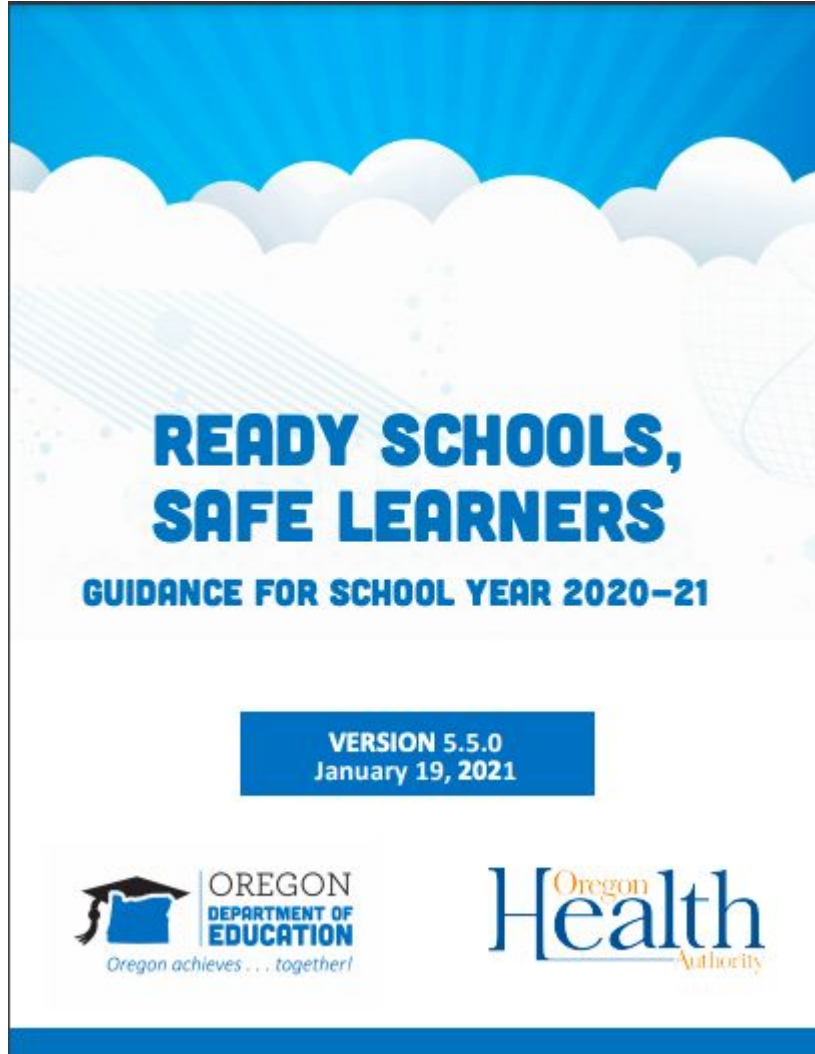


## What we'll cover today:



1. The documents that are guiding us
2. What we know about COVID-19 transmission in schools
3. OES's risk-mitigation layering
4. Isolation and Quarantine
5. Our Community Agreement





December 31, 2020

# Planning for COVID-19 Scenarios in Schools

A Toolkit for School Leaders and  
Local Public Health Authorities



## **What we know about COVID-19 and schools:**

- **With layered risk mitigation strategies, adhered to with fidelity, there has been very little transmission in schools**
- **Rate of community spread matters**
- **Older students (10+) transmit the virus more effectively than younger students**
- **Adherence to community commitments are key to preventing spread of the virus at school**



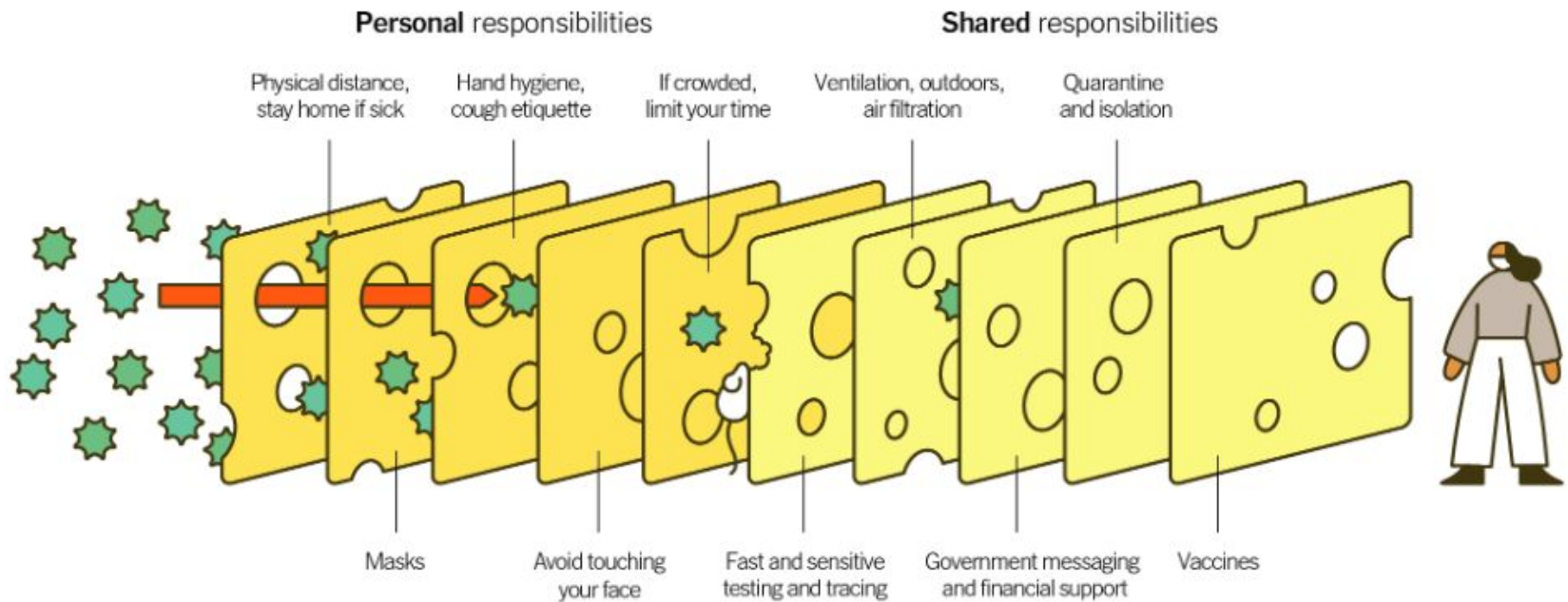
# **OES's key principles of risk mitigation:**

## **LAYERING**

- **Community Agreement**
- **Daily Screening and tracking for contact tracing**
- **Masks**
- **Distancing and increased ventilation**
- **Frequent handwashing**
- **Smaller, consistent, isolated groups**
- **Isolation and exclusion of symptomatic individuals**
- **Limiting shared materials**
- **Frequent cleaning of surfaces**
- **Frequent and transparent communication**

## Multiple Layers Improve Success

The Swiss Cheese Respiratory Pandemic Defense recognizes that no single intervention is perfect at preventing the spread of the coronavirus. Each intervention (layer) has holes.



Source: Adapted from Ian M. Mackay ([virologydownunder.com](http://virologydownunder.com)) and James T. Reason. Illustration by Rose Wong

NA



# Isolation and Quarantine

**And how it could affect you and  
your family**



## As an overall framework:

- People who have tested positive for COVID-19 should **isolate**
- Any person who has been in close contact with a person who has tested positive for COVID-19 or is presumed to have COVID-19 should **quarantine**
- Someone who has been in close contact with a person who was exposed to COVID-19 (but is not positive themselves) does **not** need to quarantine.





## Common Protocols

Generally, the closer a person is to a confirmed COVID-19 case, the greater the need for *quarantine*:

# General Quarantine Protocol

**Confirmed Case**



Close Contact

**Should Quarantine**

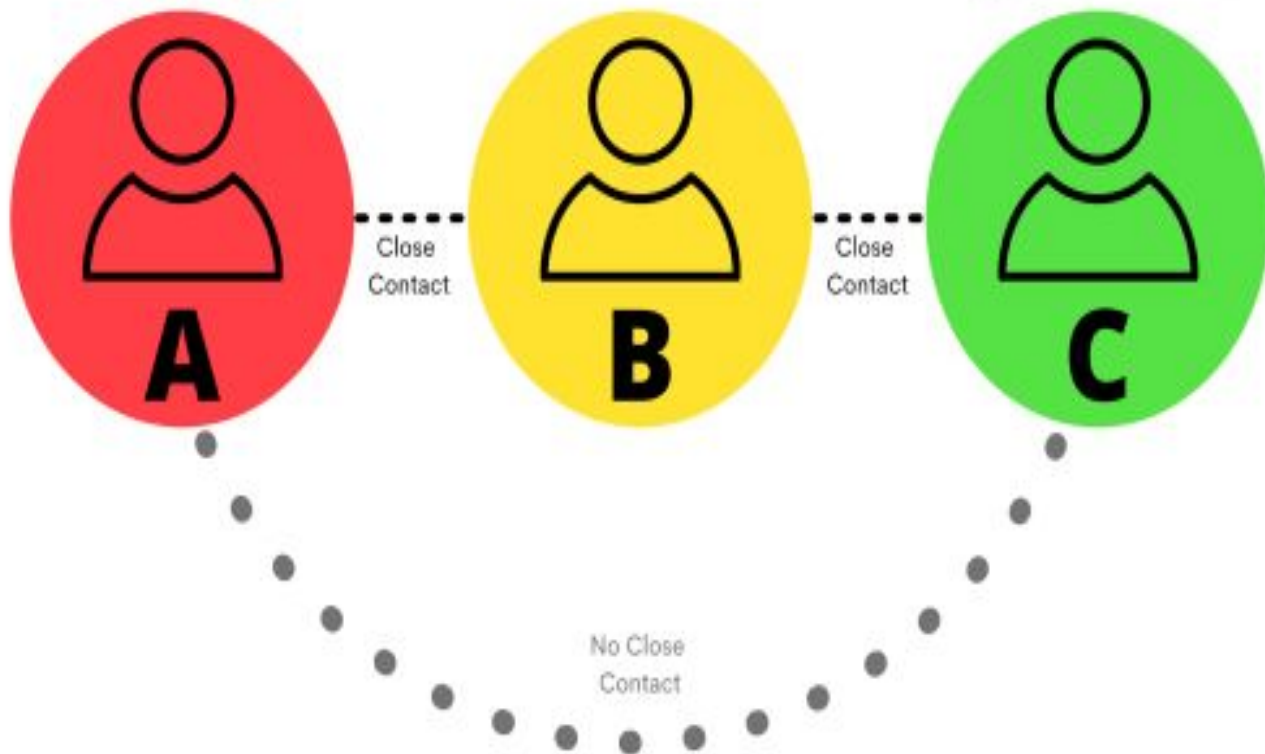


Close Contact

**Does not Need to Quarantine**



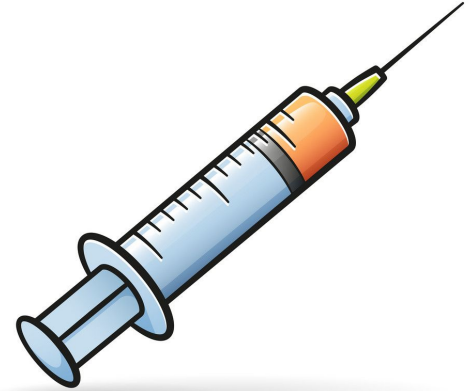
No Close Contact



- **Post exposure, an individual must quarantine for 14 days past the last date of exposure.**
- **Post-travel by public conveyance (plane, train, bus, not including metro-area commuting), a person must also quarantine at home.**
  - **If the traveler has not been exposed to a COVID-positive individual, and they do not experience any symptoms during quarantine, they may end quarantine as follows:**
    - **After 10 days**
    - **After 7 days if they are tested for COVID-19 following at least 5 complete days of quarantine and the test is negative.**



# VACCINES



VectorStock®

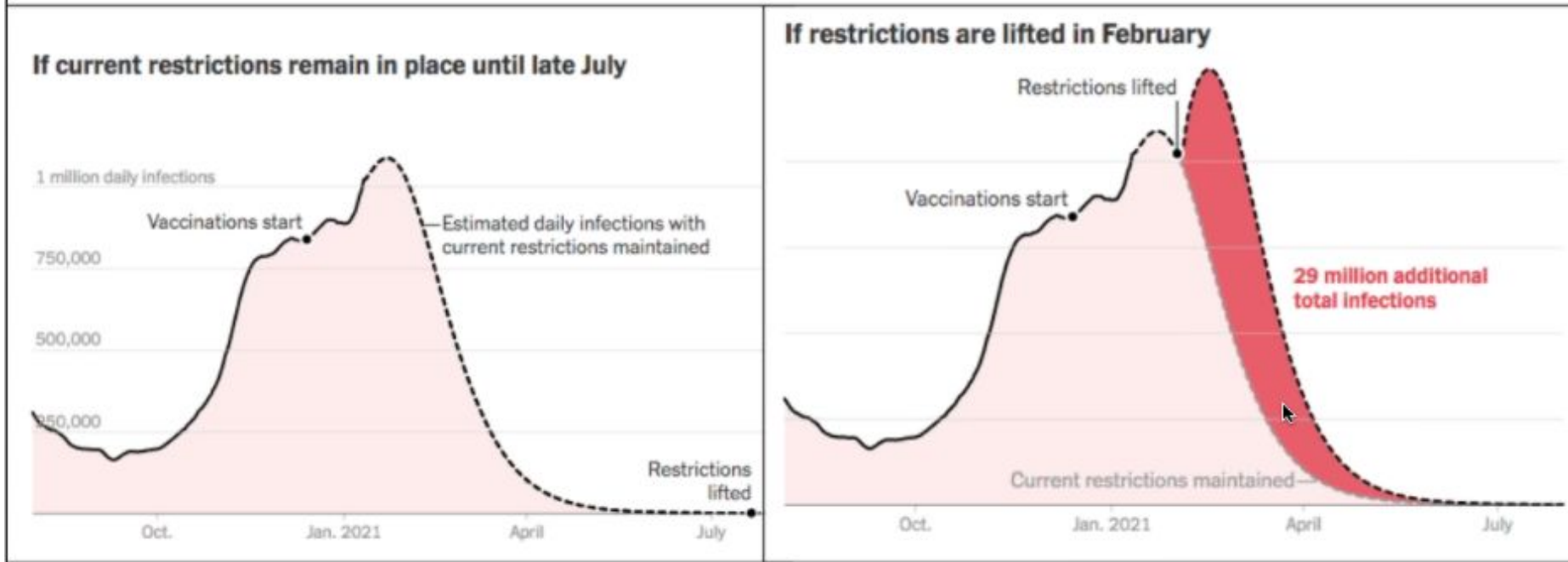
VectorStock.com/31955473

- **Most employees have received their first shot of the vaccine**
- **Even after employees are fully vaccinated we will maintain all of the same risk mitigation practices**
- **Vaccination is simply one more layer in our effort to prevent the spread of COVID-19 on campus**



## Importance of ongoing restrictions

- Modeling from Columbia University illustrates the importance of ongoing restrictions:

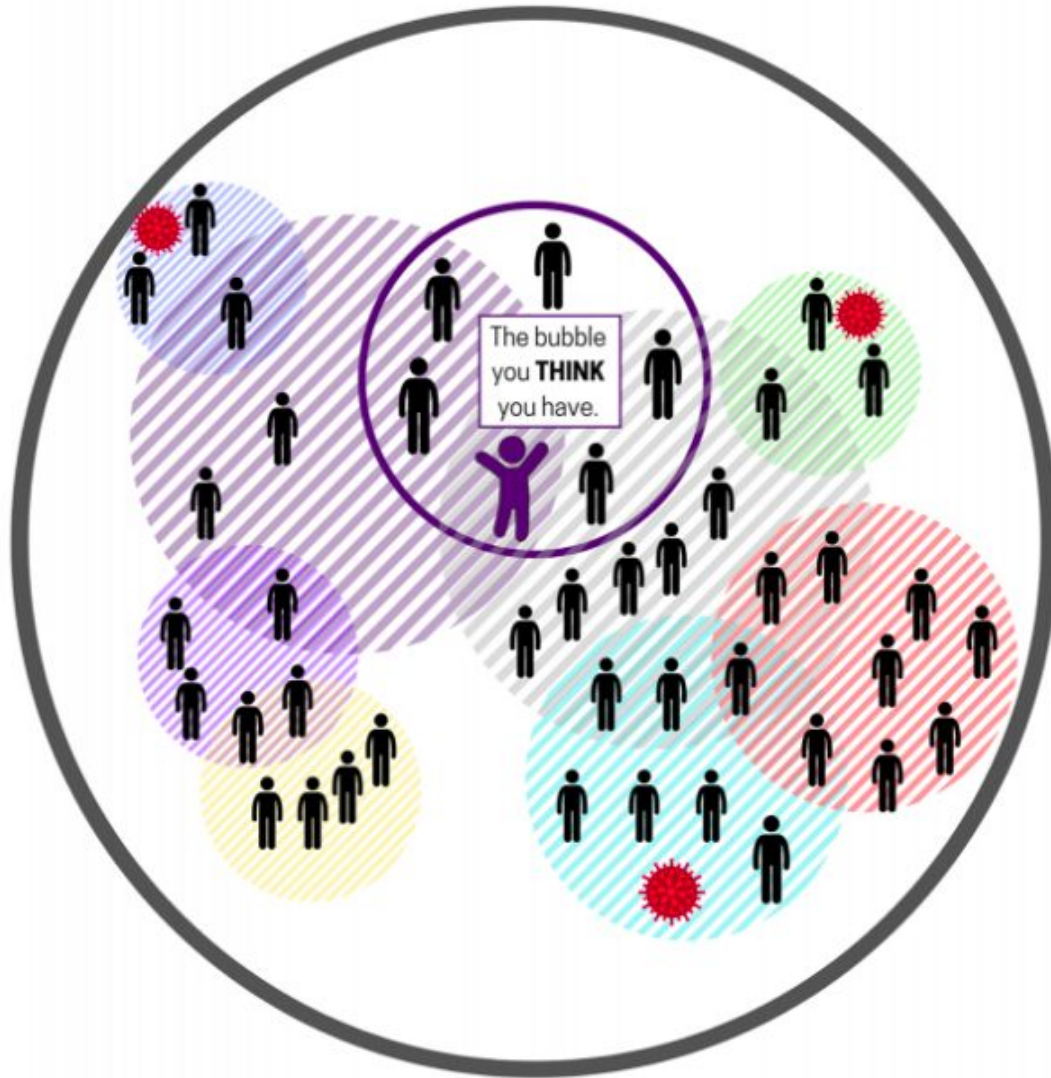


# **Acknowledgement of Risk and Community Agreement**

***We all need to act in a manner to  
keep each other safe so we can keep  
students in school***



# ALWAYS OPEN



The bubble you **ACTUALLY** have.



**QUESTIONS?  
COVID-19@OES.EDU**

