



Office 365 Installation Instructions for ISH Students

Microsoft Office 365

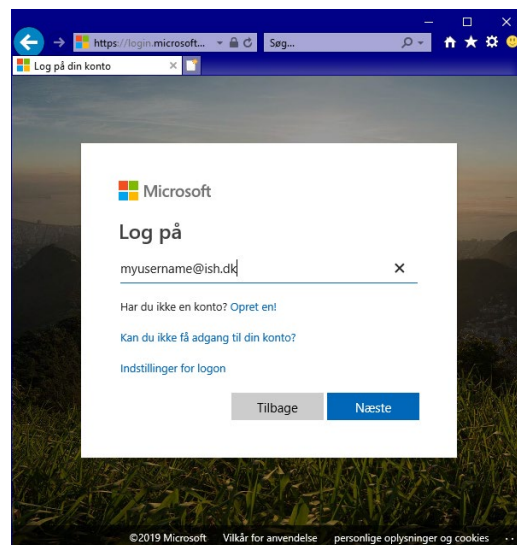
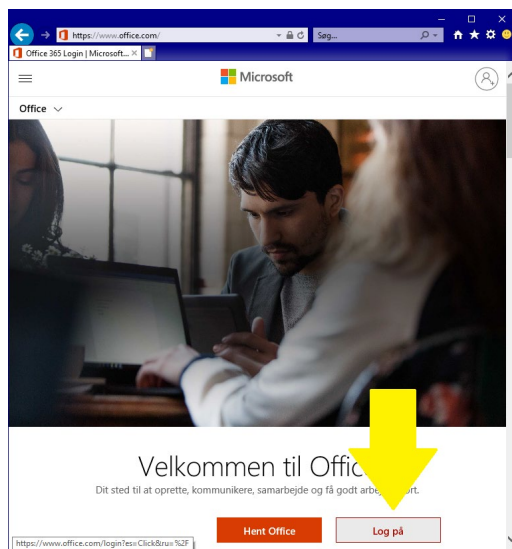
ISH offers Microsoft Office 365 for free for enrolled students. This must be downloaded and installed on the laptop at home. The student needs to have a school account already set up. Here are the instructions:

Installing Microsoft Office 365 on computers / mobile devices:

This version of Microsoft Office is eligible for students of ISH, during the time that they are enrolled at the school.

The pictures in this illustration are in Danish, since that is what will most likely be seen when connecting from Denmark.

- 1) Open <http://www.office.com> and log on with your ISH account;





- 2) Close down the announcement window, if any, and click **Install Office** at the top right corner of the window.

The installation will now start to download - open it when it has finished downloading.

