



Bring Your Own Device (BYOD) Policy in PYP4 and PYP5

Dear PYP4 and PYP5 parents,

In the PYP, it is our responsibility to provide students with multiple, authentic and purposeful opportunities to learn technology, learn about technology and learn through technology. The learning community supports students to be responsible and ethical digital citizens.

School and families support this through a combination of provided technology, and the Bring Your Own Device policy:

- BYOD is an **option** for PYP4 students
- BYOD is **required** for PYP5 students

PYP4 students may bring a device during the school year. If they do not have one, then there are school laptops which are dedicated for PYP4 student use.

For PYP5, we require students to have a personal laptop, available from the first school day of school in August 2020. This technology helps with writing the PYP5 Exhibition research paper, preparing material for the Exhibition, improving the transition to the MYP, developing ICT skills, and more.

The school's Middle Years Program (MYP), starting from MYP1, has the same BYOD policy, meaning all MYP students have to bring their own device for assignments and activities in school. Bringing a device in PYP4 and PYP5 will help with the transition to MYP. We will help the students get their school logins, personal ManageBac accounts, and so on, within the PYP5 school year.

Please find attached some guidelines for the device.

Best regards,

Stef Fleet

Primary School Principal



Bring Your Own Device (BOYD): Laptop and Software Requirements

Students in PYP5, MYP and DP need to bring their own laptop to school. The laptop can be purchased from any dealer, as long as it meets the minimum requirements listed in the table below. Please check dealer websites regularly as sometimes they have special offers. Some dealers offer the option to pay in installments. Here are some suggested dealers:

www.elgiganten.dk

www.power.dk

Chromebooks

For PYP students we recommend a Google Chromebook. Chromebooks are often cheaper (3000-3600 kr) and simpler machines and more user friendly for students. As a school that uses G-Suite, we have the ability to register any chromebook to our domain and automatically remotely install software, thereby ensuring students have the necessary software. We recommend any chromebook to be part of our school domain.

We recommend any chromebook with touchscreen and that supports installation of Android apps. To see what Chromebooks support Android apps, it must be on this list:

<https://sites.google.com/a/chromium.org/dev/chromium-os/chrome-os-systems-supporting-android-apps>

Minimum Requirements for Student Laptops

Size and weight	1.6 kilo or below preferred to be classified as an "Ultrabook" that can be easily carried; Size: 13.3" size preferred for most people. No more than 15 inches at the most; the smaller, the lighter the computer will be. Has to be a readable screen, so 12" is the absolute minimum.
Screen Size	12 inches or more
Processor	Intel i3 or i5 preferred, as these use the least amount of battery power
RAM (Memory)	8 GB or more. A computer with 4 GB will run slow and will not be a lasting solution.
Hard Drive	SSD (Flash) or SSHD (Hybrid) required



Wireless	802.11AN or 802.11 AC - the "A"-part is important, meaning dual-band Wi Fi, both 2GHz and 5GHz radio.
Warranty / insurance (Highly recommended)	Damage protection insurance

Important: remember to go through the registration process to register the serial number of the computer in your name.

Microsoft Office 365

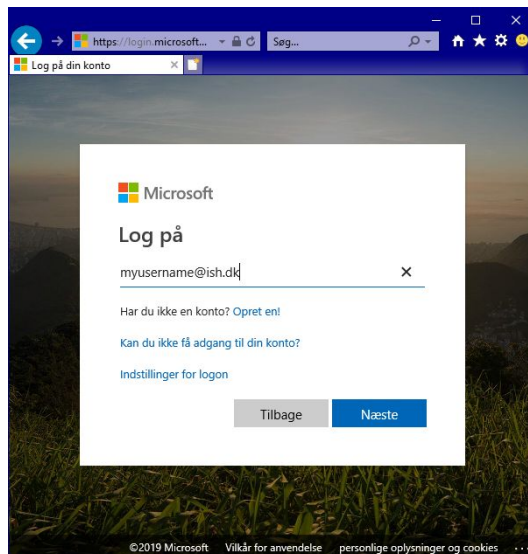
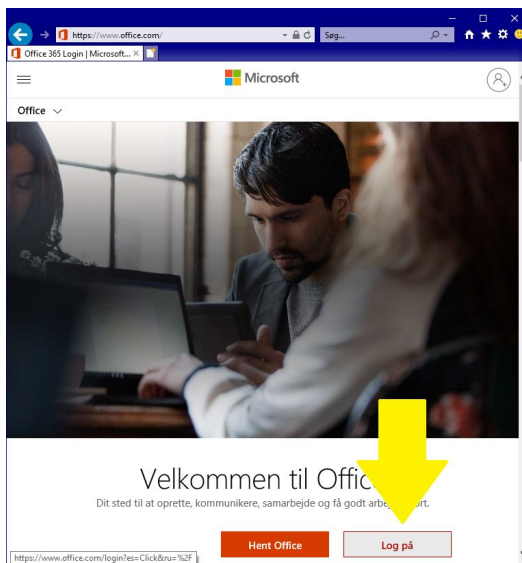
ISH offers Microsoft Office 365 for free for enrolled students. This must be downloaded and installed on the laptop at home. The student needs to have a school account already set up. Here are the instructions:

Installing Microsoft Office 365 on computers / mobile devices:

This version of Microsoft Office is eligible for students of ISH, during the time that they are enrolled at the school.

The pictures in this illustration are in Danish, since that is what will most likely be seen when connecting from Denmark.

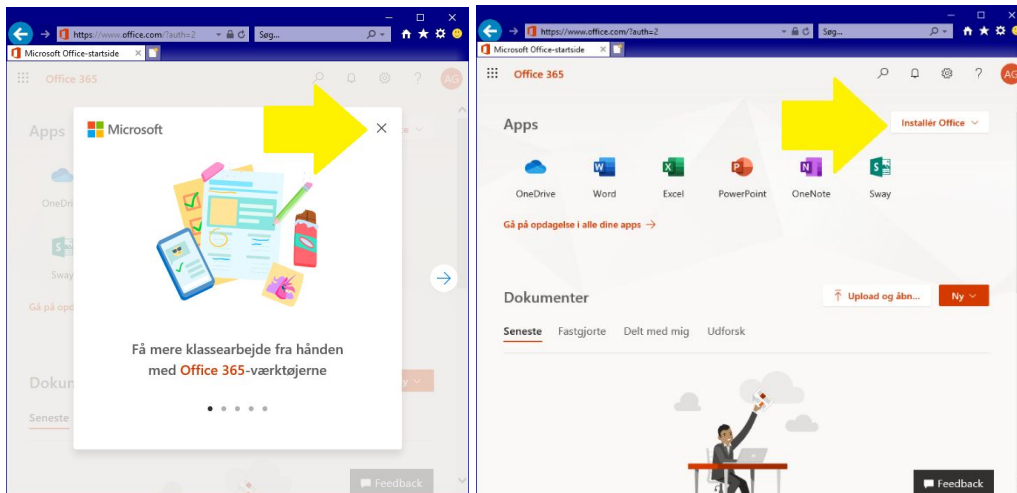
- 1) Open <http://www.office.com> and log on with your ISH account;





- 2) Close down the announcement window, if any, and click Install Office at the top right corner of the window.

The installation will now start to download - open it when it has finished downloading.



Recommended free software

- Laptop/Mobile location tracking (recommended):
 - <http://preyproject.com/>
 - For Mac users: sign up for an apple account <https://www.icloud.com/> and enable "Find My Mac"
- Adobe Reader: Available for free at www.adobe.com/download