

George Washington Elementary

School Accountability Report Card Reported Using Data from the 2019–2020 School Year California Department of Education

By February 1 of each year, every school in California is required by state law to publish a School Accountability Report Card (SARC). The SARC contains information about the condition and performance of each California public school. Under the Local Control Funding Formula (LCFF) all local educational agencies (LEAs) are required to prepare a Local Control and Accountability Plan (LCAP), which describes how they intend to meet annual school-specific goals for all pupils, with specific activities to address state and local priorities. Additionally, data reported in an LCAP is to be consistent with data reported in the SARC.

- For more information about SARC requirements, see the California Department of Education (CDE) SARC web page at <https://www.cde.ca.gov/ta/ac/sa/>.
- For more information about the LCFF or LCAP, see the CDE LCFF web page at <https://www.cde.ca.gov/fg/aa/lc/>.
- For additional information about the school, parents/guardians and community members should contact the school principal or the district office.

DataQuest

DataQuest is an online data tool located on the CDE DataQuest web page at <https://dq.cde.ca.gov/dataquest/> that contains additional information about this school and comparisons of the school to the district and the county. Specifically, DataQuest is a dynamic system that provides reports for accountability (e.g., test data, enrollment, high school graduates, dropouts, course enrollments, staffing, and data regarding English learners).

California School Dashboard

The California School Dashboard (Dashboard) <https://www.caschooldashboard.org/> reflects California's new accountability and continuous improvement system and provides information about how LEAs and schools are meeting the needs of California's diverse student population. The Dashboard contains reports that display the performance of LEAs, schools, and student groups on a set of state and local measures to assist in identifying strengths, challenges, and areas in need of improvement.



Susan Peterson, Principal

Principal, George Washington

About our School

George Washington Elementary is a Title I school of 500+ students in the beautiful central valley of Lodi California. The campus was built in 1950, making us one of the oldest and proudest structures throughout Lodi Unified School District.(55 total campuses in LUSD) We are extremely proud to have received numerous and recent awards for safety, cleanliness, and our ability to help the world through an extensive recycling program. In 2018, we adopted the Wildcat R.O.A.R. core values, which is an acronym for being R.esponsible, O rganized, A.ccepting of others, and R.eady to Learn. We are ready to ROAR!! The staff enthusiastically shares positive teaching practices with each other, and we believe our Professional Learning Community (PLC) is strong and prepared to make the necessary adjustments to support student learning into and through the next decade.

Contact

George Washington
Elementary 831 West
Lockeford St.
Lodi, CA 95240-1633
Phone: 209-331-7451
Email: spetersen@lodiUSD.net

About This School

Contact Information (School Year 2020-21)

District Contact Information (School Year 2020-21)	
District Name	Lodi Unified
Phone Number	(209) 331-7000
Superintendent	Cathy Washer
Email Address	cwasher@lodiUSD.net
Website	www.lodiUSD.net

School Contact Information (School Year 2020-21)	
School Name	George Washington Elementary
Street	831 West Lockeford St.
City, State, Zip	Lodi, Ca, 95240-1633
Phone Number	209-331-7451
Principal	Susan Petersen, Principal
Email Address	spetersen@lodiUSD.net
County-District-School (CDS) Code	39685856042097

Last updated: 1/6/2021

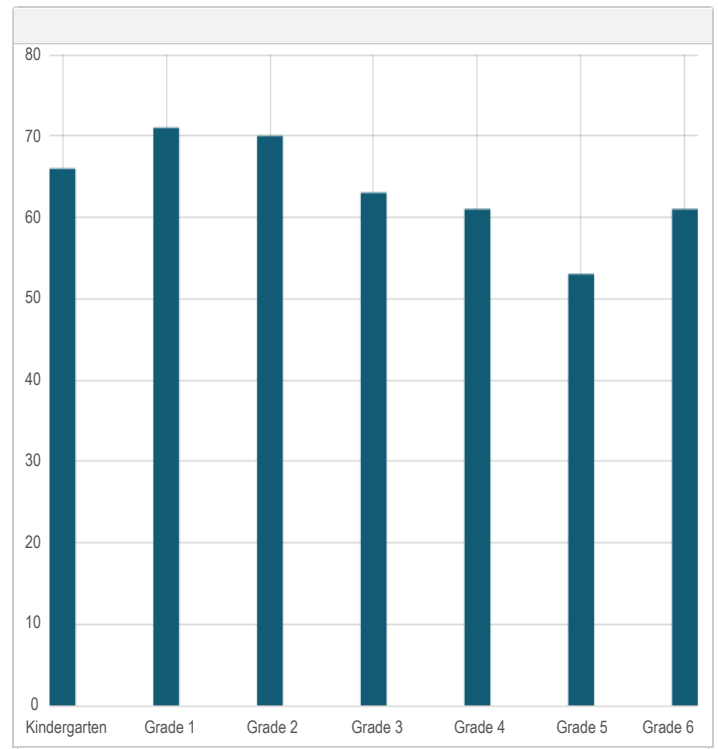
School Description and Mission Statement (School Year 2020-21)

Staff, students, and parents strive to establish a climate which is safe, orderly, friendly, caring, and trusting for everyone, with student learning as the central focus of our always busy school day. Our curriculum is consistent with the goals and objectives of the Lodi Unified School District and the California State Frameworks. Instructional materials and strategies are carefully selected and varied to accommodate different modes of learning, developmental readiness, and to foster appreciation for the cultural diversity of George Washington students. Special needs students are included in general education classrooms to the fullest extent possible. Our overarching goal is to provide the best education possible for all students in both our regular and special education classrooms. The staff philosophy promotes a continuous teaching and learning process with all children, parents, and our Wildcat staff. We believe that everyone must be accountable for the work we do, and all students can succeed with the right supports and if they give their personal best efforts. Varied experiences are provided for students which promotes respect and pride within our school, community, and themselves. Emphasis is placed on the development of the whole child: Academically, socially, emotionally, and physically

Last updated: 1/20/2021

Student Enrollment by Grade Level (School Year 2019-20)

Grade Level	Number of Students
Kindergarten	66
Grade 1	71
Grade 2	70
Grade 3	63
Grade 4	61
Grade 5	53
Grade 6	61
Total Enrollment	445



Last updated: 1/19/2021

Student Enrollment by Student Group (School Year 2019-20)

Student Group	Percent of Total Enrollment
Black or African American	2.20 %
American Indian or Alaska Native	0%
Asian	7.60 %
Filipino	0.20 %
Hispanic or Latino	69.20 %
Native Hawaiian or Pacific Islander	0.20 %
White	14.40 %
Two or More Races	2.00 %
Student Group (Other)	Percent of Total Enrollment
Socioeconomically Disadvantaged	88.50 %
English Learners	44.90 %
Students with Disabilities	12.80 %
Foster Youth	0.90 %
Homeless	2.00 %

A. Conditions of Learning

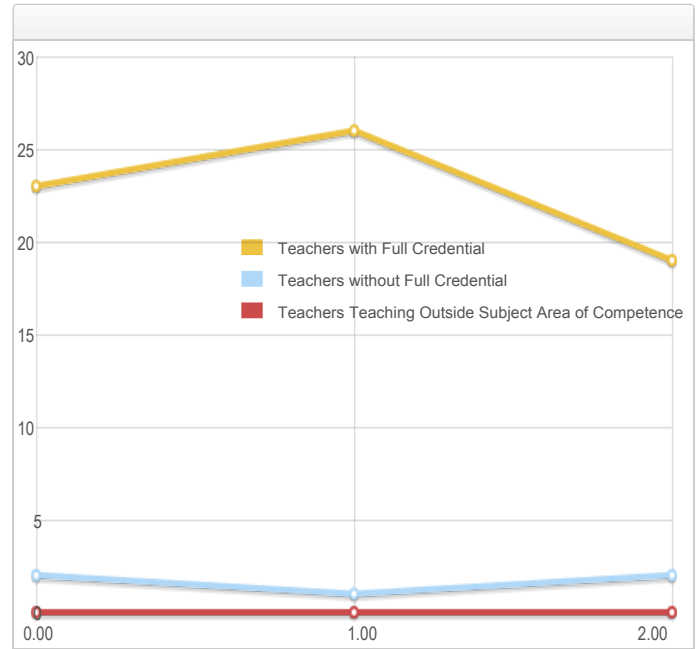
State Priority: Basic

The SARC provides the following information relevant to the State priority: Basic (Priority 1):

- Degree to which teachers are appropriately assigned and fully credentialed in the subject area and for the pupils they are teaching;
- Pupils have access to standards-aligned instructional materials; and
- School facilities are maintained in good repair

Teacher Credentials

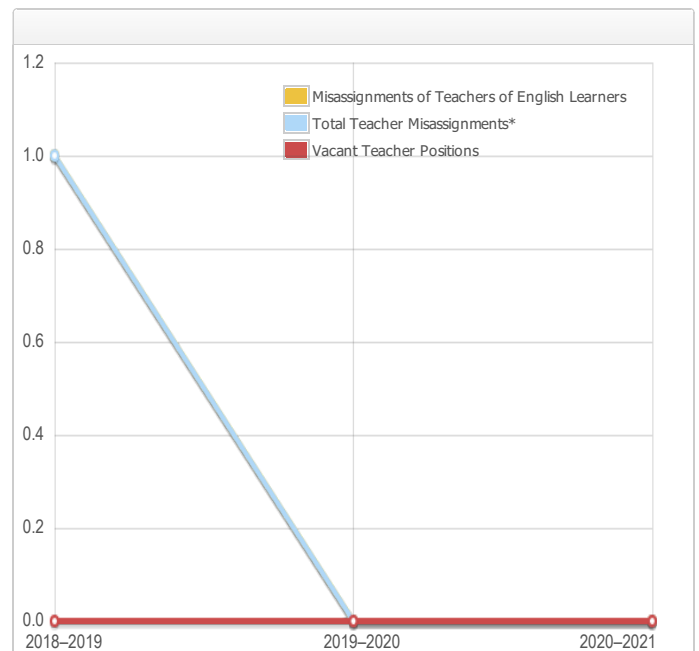
Teachers	School 2018—19	School 2019—20	School 2020—21	District 2020—21
With Full Credential	23	26	19	1274
Without Full Credential	2	1	2	72
Teachers Teaching Outside Subject Area of Competence (with full credential)	0	0	0	11



Last updated: 1/5/2021

Teacher Misassignments and Vacant Teacher Positions

Indicator	2018—19	2019—20	2020—21
Misassignments of Teachers of English Learners	1	0	0
Total Teacher Misassignments*	1	0	0
Vacant Teacher Positions	0	0	0



Note: "Misassignments" refers to the number of positions filled by teachers who lack legal authorization to teach that grade level, subject area, student group, etc.
 * Total Teacher Misassignments includes the number of Misassignments of Teachers of English Learners.

Last updated: 1/5/2021

E i U]mā 7i ffybWā 5j U]UV]]mcZHYI H\cc_g'UbX`CH Yf`-bgfi W]cbU`A UHf]Ug fGW cc` MWUf &\$&\$! &\$&%L

Year and month in which the data were collected: July 2020

Subject	Textbooks and Other Instructional Materials/year of Adoption	From Most Recent Adoption?	Percent Students Lacking Own Assigned Copy
Reading/Language Arts	<p>(Grade K-6 Base Core/EL Support) CA Journeys, Houghton Mifflin Harcourt, c.2017; Adoption Year: 2016 From most recent adoption: Yes</p> <p>(Grade 4-6 Intervention) Scholastic Read 180-Stage A, Scholastic, c.2012; Adoption Year: 2014 From most recent adoption: No, Local Board Approval on 7/22/2014</p> <p>(Grade 4-6 Intensive) Scholastic System 44 Next Gen, Scholastic, c.2014 Adoption Year: 2014 From most recent adoption: No, Local Board Approval on 7/22/2014</p> <p>(Grade K-6 ELD Support) Rosetta Stone Adoption Year: 2011 From most recent adoption: No, Local Board Approval of Supplemental Non-Core on 6/7/2011</p>		0.00 %
Mathematics	<p>(Grade K-5 Base Core) Math Expressions, Houghton Mifflin Harcourt, c.2015 Adoption Year: 2014; From most recent adoption: Yes</p> <p>(Grade 6 Base Core) CMP3 Math Grade 6, Pearson, c.2014 Adoption Year: 2014 From most recent adoption: No, Local Board Approval on 4/15/2014</p>		0.00 %
Science	<p>(Grade K-5 Base Core) Amplify Science (K-8), Amplify Education Inc., c.2018 Adoption Year: 2019; From most recent adoption: Yes</p> <p>(Grade 6 Base Core) Amplify Science (K-8), Amplify Education Inc., c.2018 Adoption Year: 2018; From most recent adoption: Yes</p>		0.00 %
History-Social Science	<p>(Grade K-2 Base Core) CA Studies Weekly Program, Studies Weekly, c.2018 Adoption Year: 2018; From most recent adoption: Yes</p> <p>(Grade 3-5 Base Core) CA Social Studies IMPACT, McGraw Hill, c.2018 Adoption Year: 2018; From most recent adoption: Yes</p> <p>(Grade 6 Base Core) NatGeo World History: Ancient Civilizations, NatGeo/Cengage, c.2018 Adoption Year: 2018; From most recent adoption: Yes</p>		0.00 %
Foreign Language	N/A		0.00 %
Health	<p>(Grade K-5) Too Good for Drugs, Mendez Foundation c.2003 Adoption Year: 2004 From the most recent adoption: No, Local Board Approval on 9/4/2004</p> <p>(Grade 6) Life Skills, Princeton Health Press, c.2000 Adoption Year: 2004 From most recent adoption: No, Local Board Approval on 6/6/2004</p>		0.00 %
Visual and Performing Arts	N/A		0.0 %
Science Lab Eqpmt (Grades 9-12)	N/A	N/A	0.0 %

Note: Cells with N/A values do not require data.

Last updated: 1/7/2021

School Facility Conditions and Planned Improvements

AGE OF SCHOOL BUILDINGS:

Year built 1950.

MAINTENANCE AND REPAIR:

The Washington School facilities' condition, including grounds and restrooms, are very good based on custodial staffing, a regular district painting and maintenance schedule and funding available for equipment and supplies. Custodial workers are assigned based on a district formula to ensure equity. District maintenance staff ensures that the repairs necessary to keep the school in good repair and working order are completed in a timely manner. A work order process is used to ensure efficient service and that emergency repairs are given the highest priority.

CLEANING PROCESS AND SCHEDULE:

A scheduled maintenance program is administered by Lodi Unified School District to ensure that all classrooms, restrooms and facilities are well-maintained and in good repair. Staff works daily with the custodial staff to develop cleaning schedules to ensure a clean and safe school.

DEFERRED MAINTENANCE PROJECT S: 2012 Phase I lighting retrofit project completed.

MODERNIZATION PROJECT S: 2012 Re-roofed DCH areas. 2013 Replaced various flooring, landscaped front of school and concrete repairs. 2014 Replaced various HVAC units. Re-Painted outside of school and replaced various flooring. Seal coated and re-stripped various black top areas. 2015 added access control and cameras. 2016-17 Replaced intercom, added new HVAC and EMS controls. 2017 Prop 39 Yr 2 Wireless Energy Management System Replacement Project completed. Replaced flooring in boys and girls portable restrooms. 2019-20 Prop 39 Yr 3-5 HVAC replacement project completed.

NEW SCHOOL CONSTRUCTION PROJECT S: N/A

Data on school facilities was collected for George Washington Elementary on 10/8/2020.

Lodi Unified School District takes great effort to ensure that all schools are clean, safe and functional. To assist in this effort, the district uses a facility survey instrument developed by the State of California Office of Public School Construction. The results of this survey are available at the school office or the district office. As of October 2020, none of the eight emergency facilities needs specified in Education Code Section 17592.72 (c)(1) exist at George Washington Elementary. These needs include:

- gas leaks
- nonfunctioning heating, ventilation, fire sprinklers, or air-conditioning systems
- electrical power failure
- major sewer line stoppage
- major pest or vermin infestation
- broken windows or exterior doors or gates that will not lock and that pose a security risk
- abatement of hazardous materials previously undiscovered that pose an immediate threat to pupils or staff
- structural damage creating a hazardous or uninhabitable condition

Last updated: 1/7/2021

School Facility Good Repair Status

Year and month of the most recent FIT report: October 2020

System Inspected	Rating	Repair Needed and Action Taken or Planned
Systems: Gas Leaks, Mechanical/HVAC, Sewer	Good	
Interior: Interior Surfaces	Good	
Cleanliness: Overall Cleanliness, Pest/Vermin Infestation	Good	
Electrical: Electrical	Good	
Restrooms/Fountains: Restrooms, Sinks/Fountains	Good	
Safety: Fire Safety, Hazardous Materials	Good	
Structural: Structural Damage, Roofs	Good	
External: Playground/School Grounds, Windows/Doors/Gates/Fences	Good	

Overall Facility Rate

Year and month of the most recent FIT report: October 2020

Overall Rating	Good
----------------	------

Last updated: 1/6/2021

B. Pupil Outcomes

State Priority: Pupil Achievement

The SARC provides the following information relevant to the State priority: Pupil Achievement (Priority 4):

- **Statewide assessments** (i.e., California Assessment of Student Performance and Progress [CAASPP] System, which includes the Smarter Balanced Summative Assessments for students in the general education population and the California Alternate Assessments [CAAs] for English language arts/literacy [ELA] and mathematics given in grades three through eight and grade eleven. Only eligible students may participate in the administration of the CAAs. CAAs items are aligned with alternate achievement standards, which are linked with the Common Core State Standards [CCSS] for students with the most significant cognitive disabilities); and
- The percentage of students who have successfully completed courses that satisfy the requirements for entrance to the University of California and the California State University, or career technical education sequences or programs of study.

CAASPP Test Results in ELA and Mathematics for All Students Grades

Three through Eight and Grade Eleven

Percentage of Students Meeting or Exceeding the State Standard

Subject	School 2018–2019	School 2019–2020	District 2018–2019	District 2019–2020	State 2018–2019	State 2019–2020
English Language Arts / Literacy (grades 3-8 and 11)	35.0%	N/A	45.0%	N/A	50%	N/A
Mathematics (grades 3-8 and 11)	25.0%	N/A	34.0%	N/A	39%	N/A

Note: Cells with N/A values do not require data.

Note: The 2019–2020 data are not available. Due to the COVID-19 pandemic, Executive Order N-30-20 was issued which waived the requirement for statewide testing for the 2019–2020 school year.

Note: Percentages are not calculated when the number of students tested is ten or less, either because the number of students in this category is too small for statistical accuracy or to protect student privacy.

Note: ELA and mathematics test results include the Smarter Balanced Summative Assessment and the CAA. The "Percent Met or Exceeded" is calculated by taking the total number of students who met or exceeded the standard on the Smarter Balanced Summative Assessment plus the total number of students who met the standard (i.e., achieved Level 3-Alternate) on the CAAs divided by the total number of students who participated in both assessments.

Last updated: 1/18/2021

CAASPP Test Results in ELA by Student Group
Grades Three through Eight and Grade Eleven (School Year 2019–2020)

Student Group	Total Enrollment	Number Tested	Percent Tested	Percent Not Tested	Percent Met or Exceeded
All Students	N/A	N/A	N/A	N/A	N/A
Male	N/A	N/A	N/A	N/A	N/A
Female	N/A	N/A	N/A	N/A	N/A
Black or African American	N/A	N/A	N/A	N/A	N/A
American Indian or Alaska Native	N/A	N/A	N/A	N/A	N/A
Asian	N/A	N/A	N/A	N/A	N/A
Filipino	N/A	N/A	N/A	N/A	N/A
Hispanic or Latino	N/A	N/A	N/A	N/A	N/A
Native Hawaiian or Pacific Islander	N/A	N/A	N/A	N/A	N/A
White	N/A	N/A	N/A	N/A	N/A
Two or More Races	N/A	N/A	N/A	N/A	N/A
Socioeconomically Disadvantaged	N/A	N/A	N/A	N/A	N/A
English Learners	N/A	N/A	N/A	N/A	N/A
Students with Disabilities	N/A	N/A	N/A	N/A	N/A
Students Receiving Migrant Education Services	N/A	N/A	N/A	N/A	N/A
Foster Youth	N/A	N/A	N/A	N/A	N/A
Homeless	N/A	N/A	N/A	N/A	N/A

Note: Cells with N/A values do not require data.

Note: The 2019–2020 data are not available. Due to the COVID-19 pandemic, Executive Order N-30-20 was issued which waived the requirement for statewide testing for the 2019–2020 school year.

Last updated:
1/18/2021

CAASPP Test Results in Mathematics by Student Group
Grades Three through Eight and Grade Eleven (School Year 2019–2020)

Student Group	Total Enrollment	Number Tested	Percent Tested	Percent Not Tested	Percent Met or Exceeded
All Students	N/A	N/A	N/A	N/A	N/A
Male	N/A	N/A	N/A	N/A	N/A
Female	N/A	N/A	N/A	N/A	N/A
Black or African American	N/A	N/A	N/A	N/A	N/A
American Indian or Alaska Native	N/A	N/A	N/A	N/A	N/A
Asian	N/A	N/A	N/A	N/A	N/A
Filipino	N/A	N/A	N/A	N/A	N/A
Hispanic or Latino	N/A	N/A	N/A	N/A	N/A
Native Hawaiian or Pacific Islander	N/A	N/A	N/A	N/A	N/A
White	N/A	N/A	N/A	N/A	N/A
Two or More Races	N/A	N/A	N/A	N/A	N/A
Socioeconomically Disadvantaged	N/A	N/A	N/A	N/A	N/A
English Learners	N/A	N/A	N/A	N/A	N/A
Students with Disabilities	N/A	N/A	N/A	N/A	N/A
Students Receiving Migrant Education Services	N/A	N/A	N/A	N/A	N/A
Foster Youth	N/A	N/A	N/A	N/A	N/A
Homeless	N/A	N/A	N/A	N/A	N/A

Note: Cells with N/A values do not require data.

Note: The 2019–2020 data are not available. Due to the COVID-19 pandemic, Executive Order N-30-20 was issued which waives the requirement for statewide testing for the 2019–2020 school year.

Last updated:
1/18/2021

CAASPP Test Results in Science for All Students
Grades Five, Eight and High School
Percentage of Students Meeting or Exceeding the State Standard

Subject	School 2018–2019	School 2019–2020	District 2018–2019	District 2019–2020	State 2018–2019	State 2019–2020
Science (grades 5, 8, and high school)	12	N/A	25	N/A	30	N/A

Note: Cells with N/A values do not require data.

Note: The 2019–2020 data are not available. Due to the COVID-19 pandemic, Executive Order N-30-20 was issued which waived the requirement for statewide testing for the 2019–2020 school year. Note: The new California Science Test (CAST) was first administered operationally in the 2018–2019 school year.

Last updated:
1/21/2021

CAASPP Tests Results in Science by Student Group
Grades Five, Eight and High School (School Year 2019–2020)

Student Group	Total Enrollment	Number Tested	Percent Tested	Percent Not Tested	Percent Met or Exceeded
All Students	N/A	N/A	N/A	N/A	N/A
Male	N/A	N/A	N/A	N/A	N/A
Female	N/A	N/A	N/A	N/A	N/A
Black or African American	N/A	N/A	N/A	N/A	N/A
American Indian or Alaska Native	N/A	N/A	N/A	N/A	N/A
Asian	N/A	N/A	N/A	N/A	N/A
Filipino	N/A	N/A	N/A	N/A	N/A
Hispanic or Latino	N/A	N/A	N/A	N/A	N/A
Native Hawaiian or Pacific Islander	N/A	N/A	N/A	N/A	N/A
White	N/A	N/A	N/A	N/A	N/A
Two or More Races	N/A	N/A	N/A	N/A	N/A
Socioeconomically Disadvantaged	N/A	N/A	N/A	N/A	N/A
English Learners	N/A	N/A	N/A	N/A	N/A
Students with Disabilities	N/A	N/A	N/A	N/A	N/A
Students Receiving Migrant Education Services	N/A	N/A	N/A	N/A	N/A
Foster Youth	N/A	N/A	N/A	N/A	N/A
Homeless	N/A	N/A	N/A	N/A	N/A

Note: Cells with N/A values do not require data.

Note: The 2019–2020 data are not available. Due to the COVID-19 pandemic, Executive Order N-30-20 was issued which waived the requirement for statewide testing for the 2019–2020 school year.

Last updated: 1/18/2021

State Priority: Other Pupil Outcomes

The SARC provides the following information relevant to the State priority: Other Pupil Outcomes (Priority 8):

- Pupil outcomes in the subject area of physical education

California Physical Fitness Test Results (School Year 2019–2020)

Grade Level	Percentage of Students Meeting Four of Six Fitness Standards	Percentage of Students Meeting Five of Six Fitness Standards	Percentage of Students Meeting Six of Six Fitness Standards
5	N/A	N/A	N/A

Note: Cells with N/A values do not require data.

Note: The 2019–2020 data are not available. Due to the COVID-19 pandemic, Executive Order N-56-20 was issued which waived the requirement to administer the physical fitness performance test for the 2019–2020 school year.

Last updated: 1/18/2021

State Priority: Parental Involvement

The SARC provides the following information relevant to the State priority: Parental Involvement (Priority 3):

- Efforts the school district makes to seek parent input in making decisions for the school district and each school site

Opportunities for Parental Involvement (School Year 2020–2021)

Parents, guardians, family members and Community members who wish to join us through their support and volunteer time at Washington School are always welcome. We maintain an open door policy in which parents are welcome to observe and participate in classroom instruction and special activities. Those who wish to volunteer regularly must be finger printed per California and LUSD policy.

Anyone interested in becoming more directly involved with policies and procedures that guide our curriculum, professional staff development, and implementation of our School Plan, (SPSA), is welcome to serve on our School Site Council, English Language Advisory Committee or District English Language Advisory Council. The George Washington Parent Club can always use increased leadership and committee support, as they are the catalysts for all fundraising, extra-curricular family nights, special events, and student field trips. Parents interested in participating in school events should call our principal, Susan Petersen, at (209) 331-7451 for more information

Last updated: 1/20/2021

State Priority: School Climate

The SARC provides the following information relevant to the State priority: School Climate (Priority 6):

- . Pupil suspension rates;
- . Pupil expulsion rates; and
- . Other local measures on the sense of safety

Suspensions and Expulsions

(data collected between July through June, each full school year respectively)

Rate	School 2017–2018	School 2018–2019	District 2017–2018	District 2018–2019	State 2017–2018	State 2018–2019
Suspensions	1.20%	1.00%	4.60%	5.00%	3.50%	3.50%
Expulsions	0.00%	0.00%	0.10%	0.20%	0.10%	0.10%

Suspensions and Expulsions for School Year 2019–2020 Only

(data collected between July through February, partial school year due to the COVID-19 pandemic)

Rate	School 2019–2020	District 2019–2020	State 2019–2020
Suspensions	1.35%	4.86%	--
Expulsions	--	0.14%	--

Note: The 2019–2020 suspensions and expulsions rate data are not comparable to prior year data because the 2019–2020 school year is a partial school year due to the COVID-19 crisis. As such, it would be inappropriate to make any comparisons in rates of suspensions and expulsions in the 2019–2020 school year compared to prior years.

Last updated: 1/21/2021

School Safety Plan (School Year 2020–2021)

A Comprehensive School Safety Plan is in place to address safety issues as well as a school wide plan to eliminate bullying behavior. Key elements of the safety plan include safe school strategies and programs, disaster response procedures, procedures for safe ingress and egress and rules and procedures on school discipline. School wide behavior expectations and discipline policies are consistently applied and students are provided adult supervision at all times. Visitors to the school must sign in at the office and receive a visitor's pass prior to going to classrooms. Visitors must return to the office and sign out upon leaving the school. Our Comprehensive School Safety Plan was last reviewed on 01/07/2020.

*Last updated:
1/21/2021*

D. Other SARC Information

The information in this section is required to be in the SARC but is not included in the state priorities for LCFF

Average Class Size and Class Size Distribution (Elementary) School Year (2017–2018)

Grade Level	Average Class Size	Number of Classes * 1-20	Number of Classes * 21-32	Number of Classes * 33+
K	23.00		3	
1	20.00	2	1	
2	19.00	2	1	
3	24.00		2	
4	28.00		2	
5	26.00		2	
6	29.00		3	
Other**	12.00	2		

Number of classes indicates how many classes fall into each size category (a range of total students per class).

** "Other" category is for multi-grade level classes.

Average Class Size and Class Size Distribution (Elementary) School Year (2018–2019)

Grade Level	Average Class Size	Number of Classes * 1-20	Number of Classes * 21-32	Number of Classes * 33+
K	21.00	1	2	
1	22.00		3	
2	24.00		2	
3	24.00		4	
4	25.00		2	
5	28.00		2	
6	22.00	1	2	
Other**	9.00	2		

Number of classes indicates how many classes fall into each size category (a range of total students per class).

** "Other" category is for multi-grade level classes.

Average Class Size and Class Size Distribution (Elementary) School Year (2019–2020)

Grade Level	Average Class Size	Number of Classes * 1-20	Number of Classes * 21-32	Number of Classes * 33+
K	21.00	1	2	
1	21.33		3	
2	22.00		3	
3	20.00		3	
4	29.00		2	
5	24.50		2	
6	29.50		2	
Other**	8.00	3		

Number of classes indicates how many classes fall into each size category (a range of total students per class).

** "Other" category is for multi-grade level classes.

Last updated: 1/22/2021

Ratio of Pupils to Academic Counselor (School Year 2019–2020)

Title	Ratio
Pupils to Academic Counselor*	890

*One full time equivalent (FTE) equals one staff member working full time; one FTE could also represent two staff members who each work 50 percent of full time.

Last updated:
1/19/2021

Student Support Services Staff (School Year 2019–2020)

Title	Number of FTE* Assigned to School
Counselor (Academic, Social/Behavioral or Career Development)	0.50
Library Media Teacher (Librarian)	
Library Media Services Staff (Paraprofessional)	0.48
Psychologist	0.50
Social Worker	
Nurse	0.73
Speech/Language/Hearing Specialist	1.20
Resource Specialist (non-teaching)	1.00
Other	

*One Full Time Equivalent (FTE) equals one staff member working full time; one FTE could also represent two staff members who each work 50 percent of full time.

Last updated: 1/19/2021

Expenditures Per Pupil and School Site Teacher Salaries (Fiscal Year 2018–2019)

Level	Total Expenditures Per Pupil	Expenditures Per Pupil (Restricted)	Expenditures Per Pupil (Unrestricted)	Average Teacher Salary
School Site	\$13481.00	\$4543.80	\$8937.20	\$76743.20
District	N/A	N/A	\$8143.10	\$75702.00
Percent Difference – School Site and District	N/A	N/A	9.30%	1.40%
State	N/A	N/A	\$7750.12	\$83052.00
Percent Difference – School Site and State	N/A	N/A	14.20%	-7.90%

Note: Cells with N/A values do not require data.

Last updated: 1/20/2021

Types of Services Funded (Fiscal Year 2019–2020)

In addition to services provided with general funding, Lodi Unified School District also provides programs and supplemental services that are funded through either Local Control Funding Formula (LCFF) or other sources. Services vary by school and may include:

- After School Programs
- AVID Programs
- Special Education
- Counseling Services (Academic and Career)
- Extended Day/Year/Summer School
- Supplemental instructional materials
- Enrichment Programs
- Access to Technology
- Social Services
- Athletic Programs
- Program for English Learners
- Distance Learning Resources

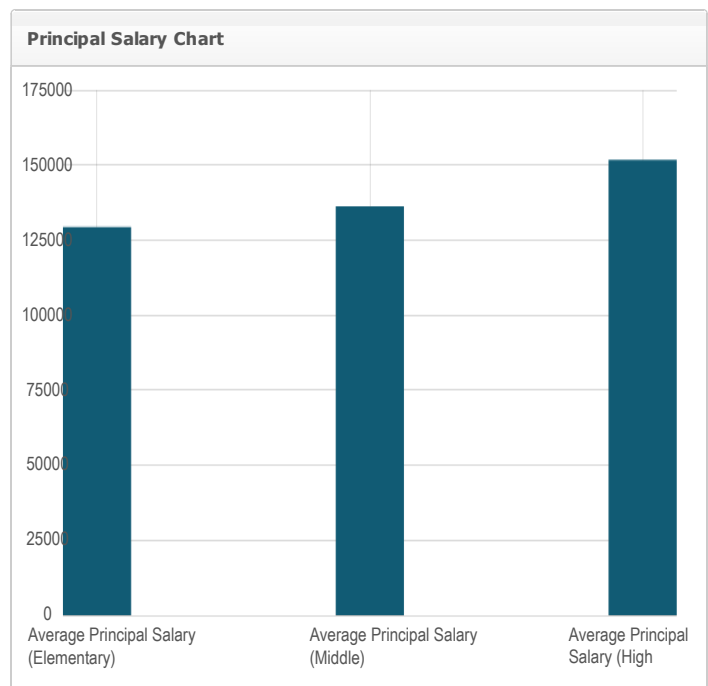
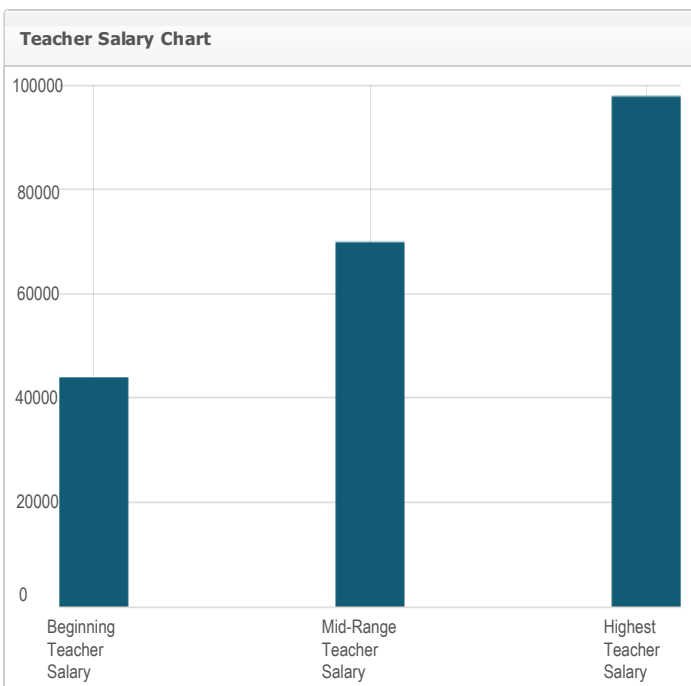
Check with the school principal to get more information about the services that are specific to the school.

Last updated: 1/4/2021

Teacher and Administrative Salaries (Fiscal Year 2018–2019)

Category	District Amount	State Average For Districts In Same Category
Beginning Teacher Salary	\$43,999	\$50,029
Mid-Range Teacher Salary	\$69,903	\$77,680
Highest Teacher Salary	\$97,861	\$102,143
Average Principal Salary (Elementary)	\$129,353	\$128,526
Average Principal Salary (Middle)	\$136,291	\$133,574
Average Principal Salary (High)	\$151,703	\$147,006
Superintendent Salary	\$268,296	\$284,736
Percent of Budget for Teacher Salaries	31.00%	33.00%
Percent of Budget for Administrative Salaries	4.00%	5.00%

For detailed information on salaries, see the CDE Certificated Salaries & Benefits web page at <https://www.cde.ca.gov/ds/fd/cs/>.



Last updated: 1/21/2021

Professional Development

Measure	2018–2019	2019–2020	2020–2021
Number of school days dedicated to Staff Development and Continuous Improvement	2	2	2