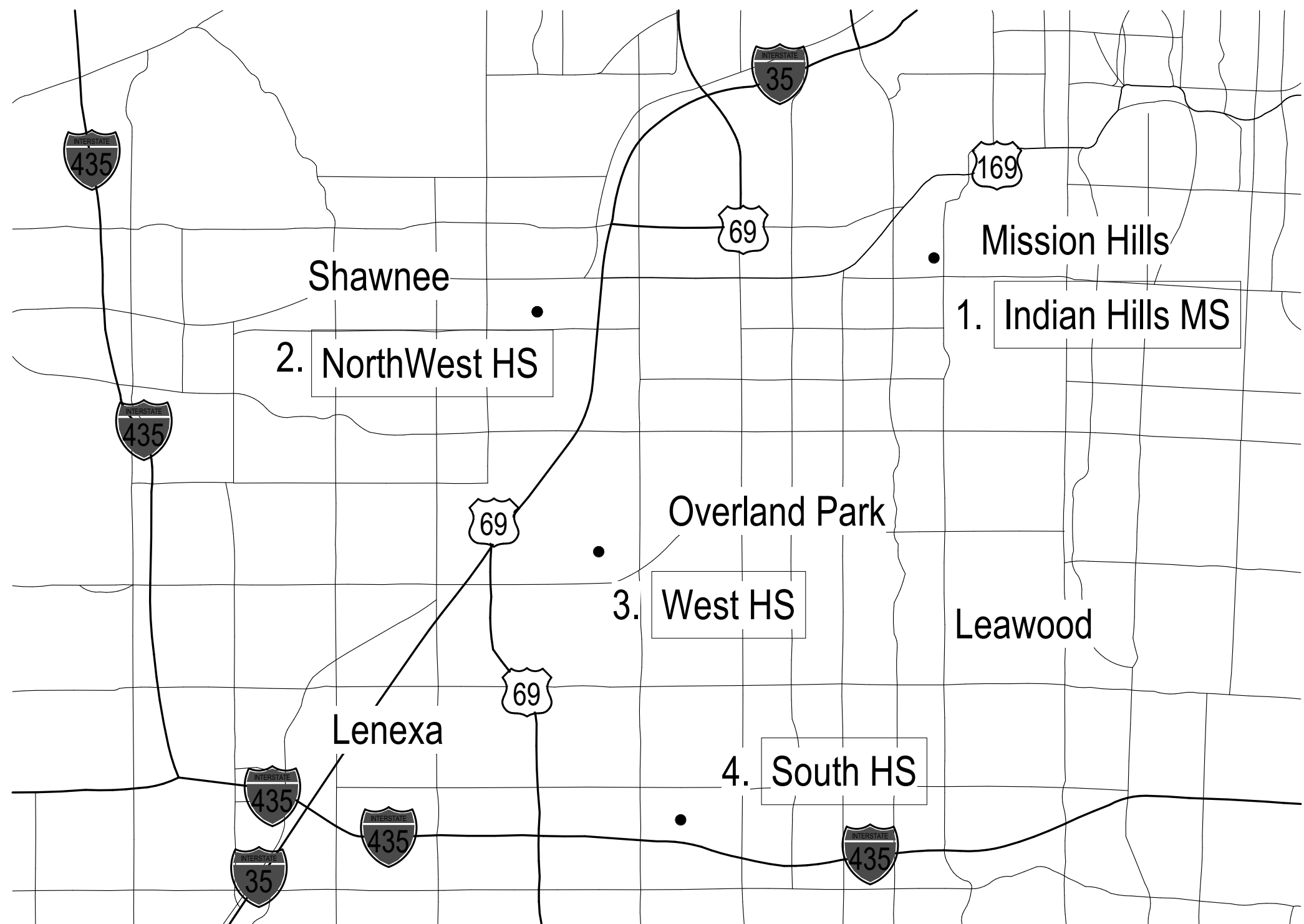


SHAWNEE MISSION USD LIGHTING UPGRADES 2021

Indian Hills MS, Northwest HS, West HS, South HS



1. Indian Hills Middle School
6400 Mission Road
Prairie Village, KS 66208

2. Northwest High School
12701 W. 67th St.
Shawnee, KS 66216

3. West High School
8800 W. 85th St.
Overland Park, KS 66212

4. South High School
5800 W. 107th St.
Overland Park, KS 66207

SHEET INDEX

THEATRICAL LIGHTING	
NWHS-TH110	THEATRICAL LIGHTING AND CONTROL - RISER DIAGRAM
NWHS-TH111	THEATRICAL LIGHTING AND CONTROL - MAIN LEVEL DEVICES
NWHS-TH112	THEATRICAL LIGHTING AND CONTROL - MAIN LEVEL DEVICES
SHS-TH110	THEATRICAL LIGHTING AND CONTROL - RISER DIAGRAM
SHS-TH111	THEATRICAL LIGHTING AND CONTROL - MAIN LEVEL DEVICES
SHS-TH112	THEATRICAL LIGHTING AND CONTROL - MAIN LEVEL DEVICES
WHS-TH110	THEATRICAL LIGHTING AND CONTROL - RISER DIAGRAM
WHS-TH111	THEATRICAL LIGHTING AND CONTROL - MAIN LEVEL DEVICES
WHS-TH112	THEATRICAL LIGHTING AND CONTROL - MAIN LEVEL DEVICES

PROJECT CONTACTS

OWNER
Shawnee Mission School District

6445 Carter Ave.
Merriam, KS 66203

PROJECT CONTACT
Michael Wood
(913) 993-8500

ARCHITECT
HTK Architects, PA

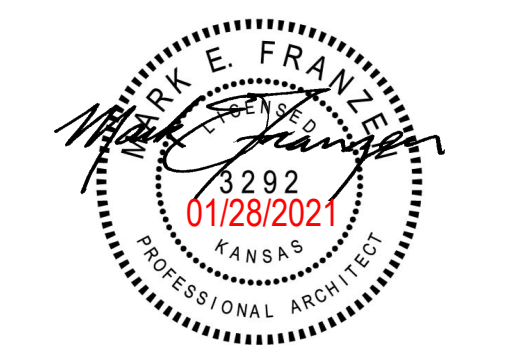
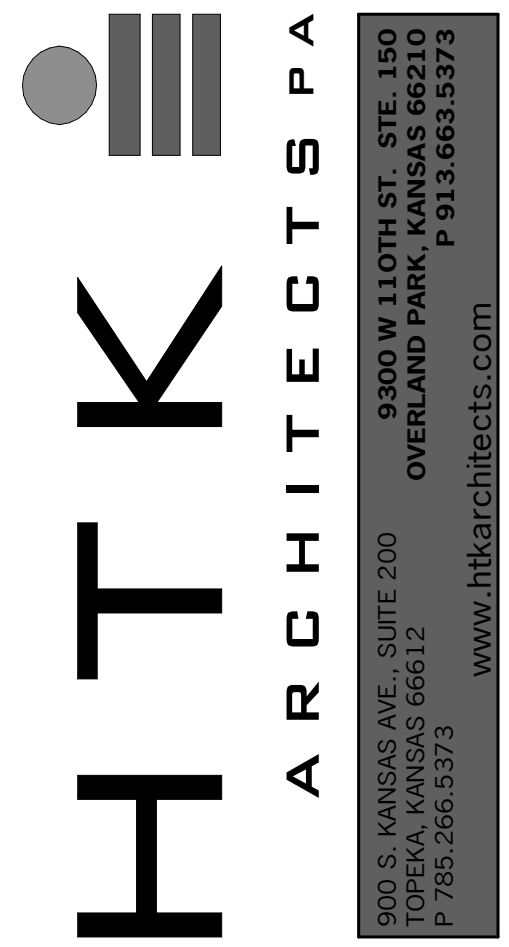
9300 N. 110th St., Suite 150
Overland Park, KS 66210

PROJECT CONTACT
Matt Patterson
(913) 663-5375

**THEATRICAL LIGHTING
CONSULTANT**
Peerbolte Creative

182 NW 961
Warrensburg, MO 64093

PROJECT CONTACT
Cari Hutcherson
(660) 424-1383



BID DOCUMENTS	
DATE:	• 01/28/2019
REVISED DATE:	•
	•
	•

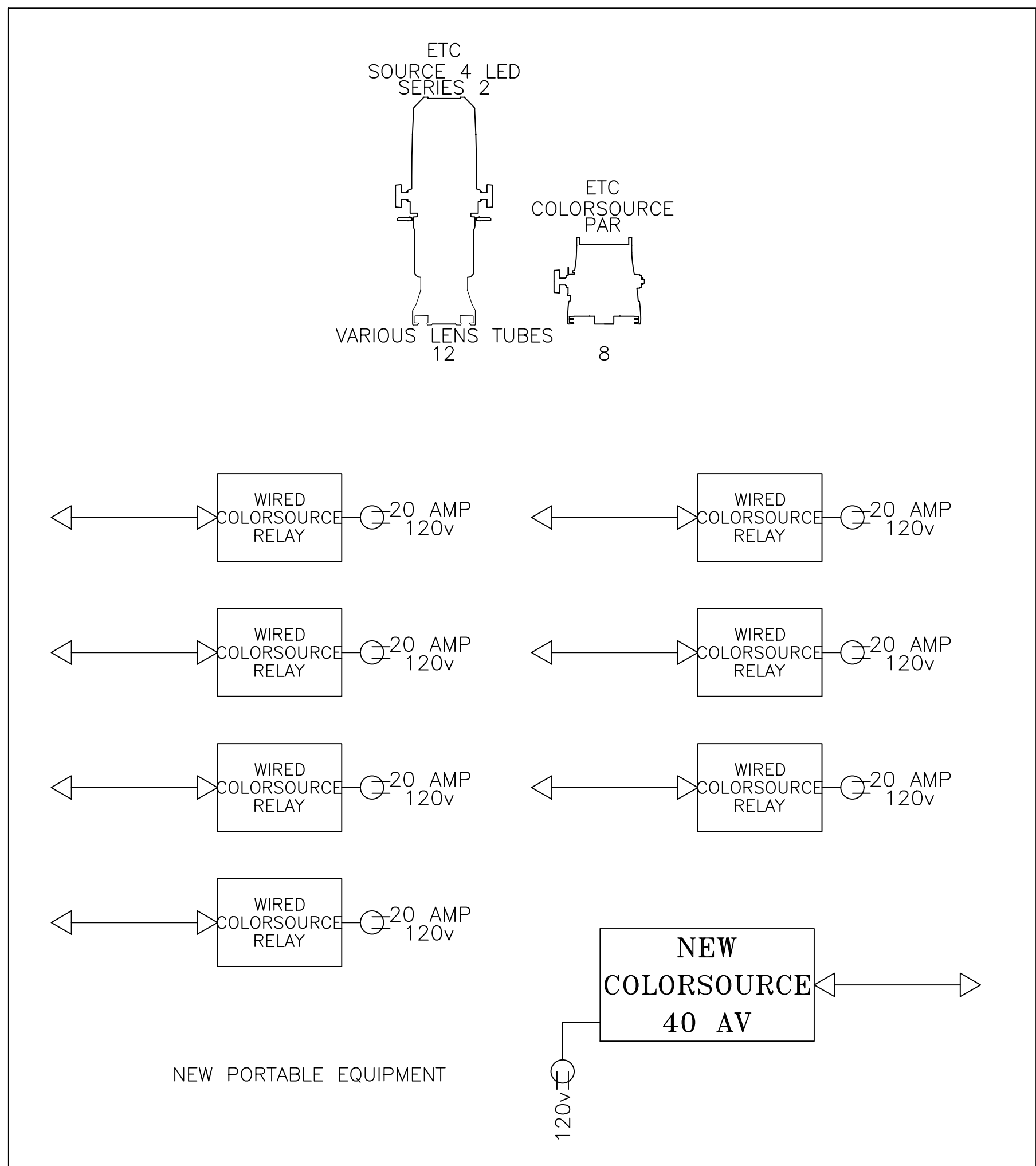
SHAWNEE MISSION USD THEATRICAL LIGHTING UPGRADES 2020

SHEET CONTENTS:
TITLE SHEET

HTK PROJECT NUMBER:
• 1707.05-004

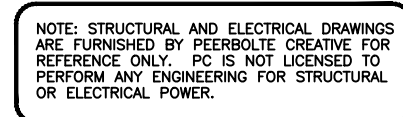
SHEET NUMBER:

G101



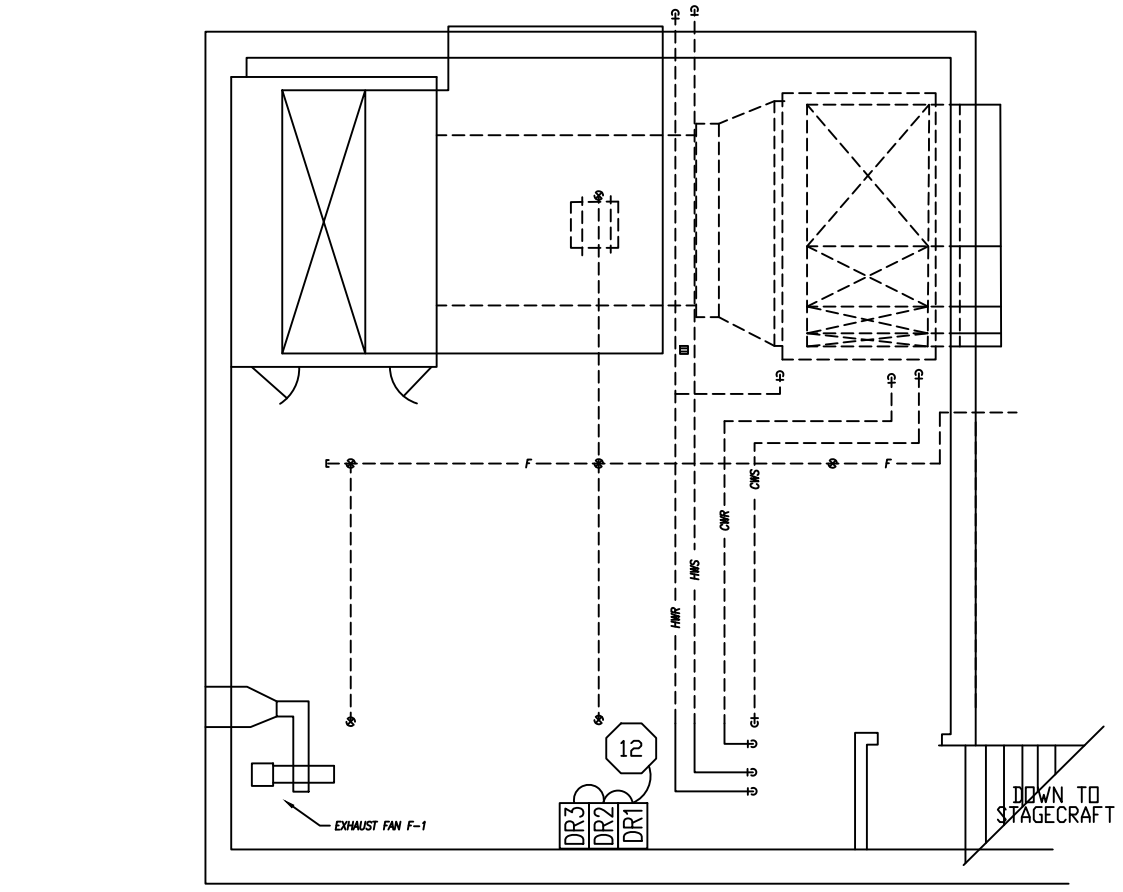
NWHS-TH110

NOTE: STRUCTURAL AND ELECTRICAL DRAWINGS ARE FURNISHED BY PEERBOLTE CREATIVE FOR REFERENCE ONLY. PC IS NOT LICENSED TO PERFORM ANY ENGINEERING FOR STRUCTURAL OR ELECTRICAL POWER.

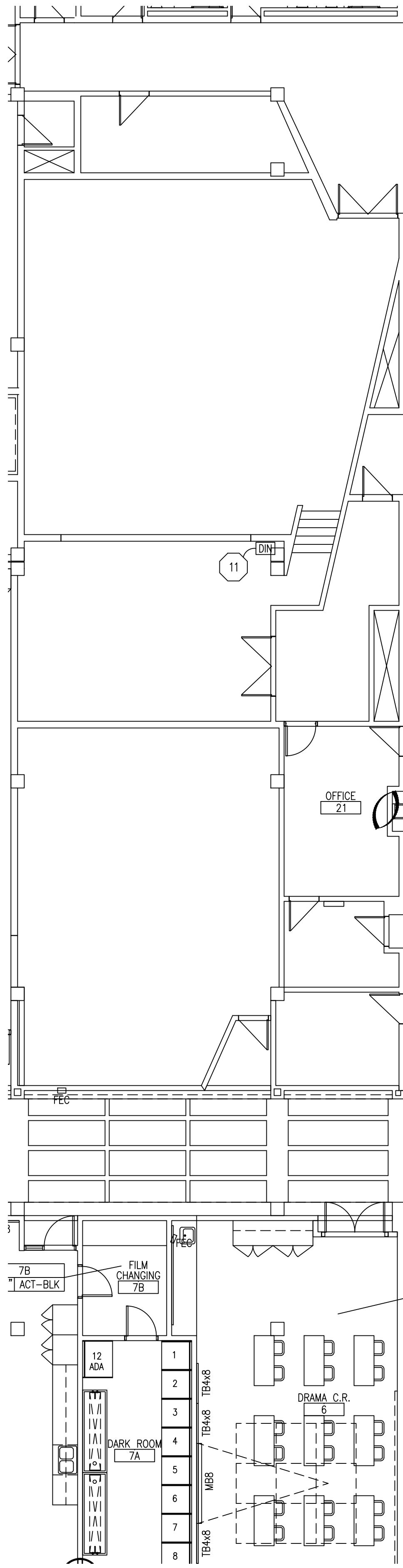


17/20/2021 1:37:30 PM C:\shawnee mission\310050101\shawnee mission\drawings\theatrical\shawnee mission\North_Central_2021_Lighting.rvt

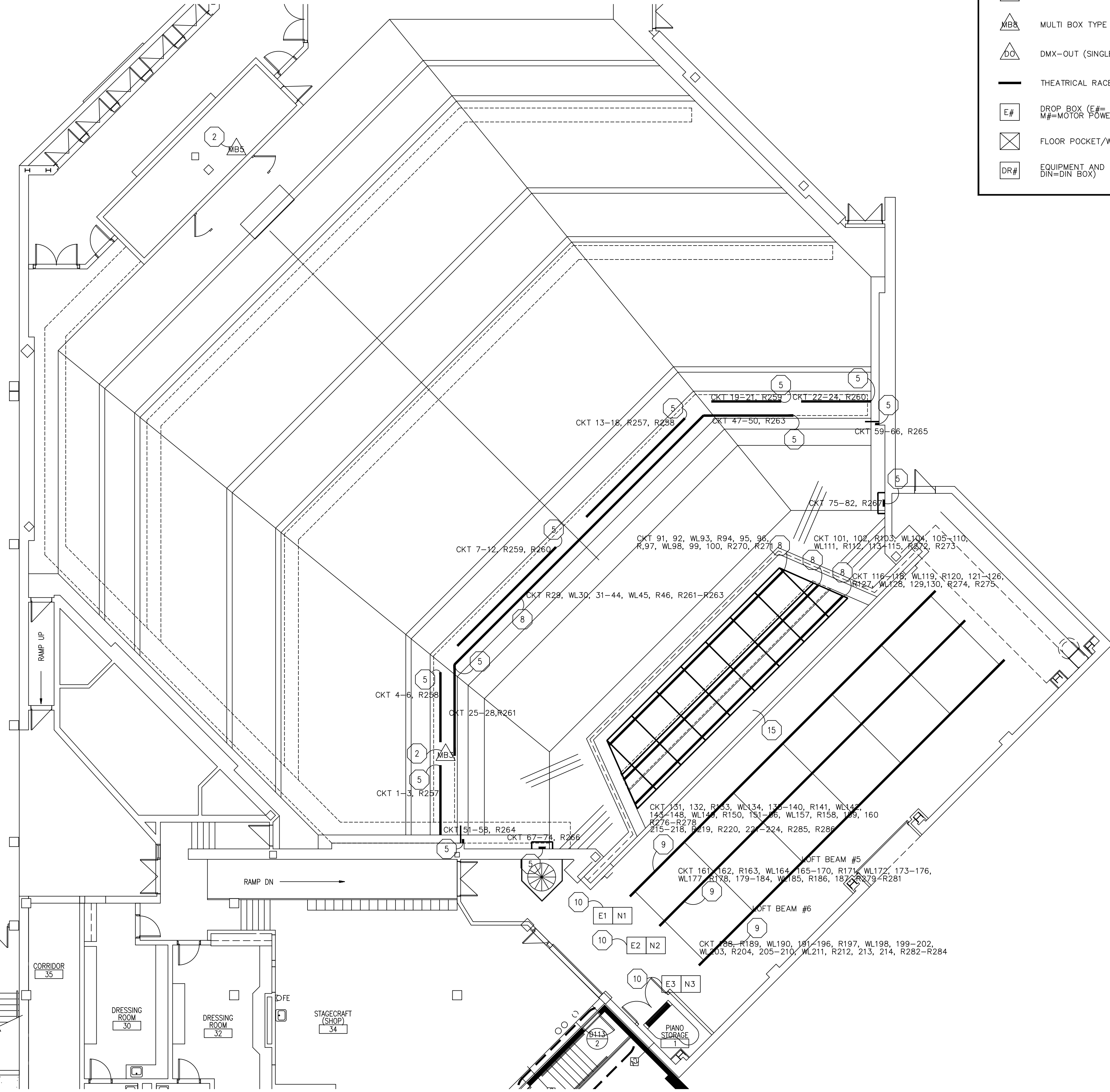
North_Central_2021_Lighting.rvt



A2 DIMMER ROOM
1/8"=1'0"



A1 UPPER LEVEL POWER AND DATA
1/8"=1'0"



KEY TO THEATRE LIGHTING SYMBOLS	
(E)	ENTRY STATION (SINGLE GANG BACK BOX)
(SP)	5 BUTTON PRESET STATION (SINGLE GANG BACK BOX)
(E6)	ECHO 6 BUTTON PRESET STATION (SINGLE GANG BACK BOX)
(EA)	ECHO ACCESS STATION (SINGLE GANG BACK BOX)
(EK)	ECHO KEYSWITCH STATION (SINGLE GANG BACK BOX)
(ET)	ECHO TOUCH LCD STATION (MANUF. SUPPLIED BACK BOX)
(N)	NET STATION (SINGLE GANG BACK BOX)
(MB1)	MULTI BOX TYPE 1 (TWO GANG BACK BOX)
(MB3)	MULTI BOX TYPE 3 (THREE GANG BACK BOX)
(MB5)	MULTI BOX TYPE 5 (THREE GANG BACK BOX)
(MB6)	MULTI BOX TYPE 6 (1U RACK PLATE)
(MB7)	MULTI BOX TYPE 7 (2U RACK PLATE)
(MB8)	MULTI BOX TYPE 8 (4U RACK PLATE)
(DO)	DMX-OUT (SINGLE GANG BACK BOX)
—	THEATRICAL RACEWAY
(E#)	DROP BOX (E# = ELECTRIC, DB# = DROP BOX, N = NET DROP, M# = MOTOR POWER, MC# = MOTOR CONTROL)
(X)	FLOOR POCKET/WALL BOX
(DR#)	EQUIPMENT AND RACKS (DR# = DIMMER RACK, EQ = EQ RACK, DIN = DIN BOX)

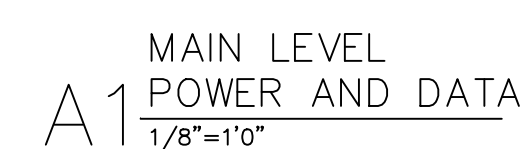
1. REPLACE EXISTING BUTTON STATION. REUSE EXISTING WIRING, CONDUIT AND BACK BOXES.
2. REPLACE UNISON CONNECTOR WITH NET JACK. INSTALL NEW CONNECTOR IN EXISTING PLATE, AND INSTALL NEW LABEL. PULL NEW BELDEN 1583A IN PLACE OF EXISTING BELDEN 8471.
3. REPLACE EXISTING MBB RACK PLATE (LCD AND INDEX RAIL SWITCH). NEW LCD PANEL REQUIRED. REUSE EXISTING SWITCH IF POSSIBLE. REPLACE BELDEN 8471 FOR THE LCD WITH BELDEN 1583A.
4. EXISTING EQUIPMENT RACK. REPLACE NETWORK SWITCHES, ARCHITECTURAL PROCESSOR AND UPS. PROVIDE NEW PATCH BAYS AS REQUIRED AND LABEL EXISTING PATCH BAYS.
5. RELABEL EDISON OUTLETS AS INDICATED.
6. 3/4" CONDUIT TO ACCESSORY RACK. CONTAINS (1) BELDEN 1583A, (1) #16 AWG MOUNT 10'0" AFF, FOR WIRELESS ACCESS POINT.
7. 1/2" CONDUIT TO DIN BOX. CONTAINS (1) BELDEN 9729 FOR DMX OUT MOUNT 2'0" AFF.
8. REPLACE (4) STAGE PIN OUTLETS WITH EDISON OUTLETS. OUTLETS ARE ON PIGTAILS. LABEL AS INDICATED.
9. REPLACE (8) STAGE PIN OUTLETS WITH EDISON OUTLETS. OUTLETS ARE ON PIGTAILS. LABEL AS INDICATED.
10. ALTERNATE NW1. MOVE GRID IRON JUNCTION BOXES AND NET BOXES TO OFFSTAGE SIDE OF #5 LDFT BLDCK BEAM. MOVE CABLE CRADLE BLOCKS TO LOFT BEAM #6. REPLACE MULTI-CABLE SWAGS WITH NEW CABLE IN APPROPRIATE LENGTHS AND LET HANG TO REMOVE TWIST. RECONNECT TO EXISTING CABLE CRADLE AND PICK-UP. CABLE SHALL BE ADJUST TO PREVENT INTERFERENCE WITH ELECTRIC AND ADJACENT LINE SETS.
11. NEW DIN BOX IN LOCATION OF EXISTING OPTO SPLITTER. DIN BOX CONTAINS: OPTO SPLITTER 2-IN, 1 OUT; ECHO DMX SCENE CONTROLLER; ECHO EXPANSION BRIDGE; ECHO POWER SUPPLY; OPTO SPLITTER 1 IN 7 OUT.
12. EXISTING DIMMER RACKS. UPGRADE CONTROL MODULES TO NEW CEM3 MODULES.
13. 1/2" CONDUIT TO DIN BOX. CONTAINS (1) BELDEN 8471, (1) #14 AWG. INSTALL 3'9" AFF.
14. 1/2" CONDUIT TO DIN BOX. CONTAINS (1) BELDEN 8471, (3) #14 AWG. INSTALL 3'9" AFF.
15. REMOVE ABANDONED TRACK LIGHTING TRACKS AND SURFACE BOXES. PLACE BLANK COVER PLATES ON EMPTY BOXES. TOUCH UP PAINT AND STAIN AROUND AND UNDER REMOVED DEVICES.

GENERAL NOTES

1. COMBINE CONDUIT RUNS WHENEVER POSSIBLE.
2. ALL BACK BOX MOUNTED DEVICES ARE TO BE FLUSH MOUNT UNLESS NO OPTION EXISTS.
3. ALL WIRING TO BE RUN IN CONDUIT.
4. ALL DEVICES NOT SHOWN ARE TO BE REMAIN AND SHALL BE RESTORED TO FUNCTION AT THE COMPLETION OF THE INSTALLATION.
5. CONDUIT MAY NOT BE RUN IN AREAS VISIBLE TO THE AUDIENCE UNLESS NO OPTION EXISTS.
6. CONDUIT OR WIREMOLD INSTALLED IN AREAS VISIBLE TO THE AUDIENCE MUST BE PAINTED TO MATCH THE ADJACENT WALL IN A COLOR SELECTED BY THE ARCHITECT.
7. ANY ABANDONED BOXES, OR HOLES FROM REMOVAL OF CONDUIT SHALL BE COVERED WITH BLANK COVER PLATES.
8. DEVICE IDENTIFIERS USED ON THE NWHs ARE SPECIFIC TO THESE SHEETS ONLY AND WILL NOT CROSS REFERENCE BETWEEN OTHER SHEETS.

PEERBOLTE CREATIVE
109 E PINE STREET
PO BOX 754
WARRENSBURG MO, 64093
PHONE (660)429-1383
FAX (660)429-5666
www.peerbolte.com

NOTES: STRUCTURAL AND ELECTRICAL DRAWINGS ARE FORWARDED BY PEERBOLTE CREATIVE FOR REFERENCE ONLY. NO IS NOT LICENSED TO CONDUCT ANY WORKING FOR STRUCTURAL OR ELECTRICAL POWER.



- 1 REPLACE EXISTING ARCHITECTURAL PRESET STATION
REMOVE EXISTING WIRE
PULL NEW (1) BELDEN 8471, (1) #14 AWG
- 2 REMOVE EXISTING ARCHITECTURAL PLUG-IN STATION
REMOVE EXISTING WIRE
PULL NEW (1) BELDEN 1583A, (1) #14 AWG
- 3 REPLACE EXISTING CONTROL STATION
REMOVE EXISTING WIRING
PULL NEW BELDEN 1583A (1) #14 AWG
- 4 REMOVE EXISTING NETWORK GATEWAY
INSTALL NEW 2-PORT GATEWAY USING
EXISTING WIRING.
- 5 REROUTE EXISTING DMX
CURRENT PATH TO BOOTH TO DIMMER RACK
NEW PATH IS BOOTH TO GATEWAY IN EQUIPMENT
RACK, TO DIMMER RACK
- 6 NEW NETWORK JACK
CONDUIT TO EQUIPMENT RACK
CONTAINS (1) BELDEN 1583A, (1) #14 AWG
MOUNT 8"0" AFF FOR WAP
- 7 NEW NETWORK JACK
CONDUIT TO EQUIPMENT RACK
CONTAINS (1) BELDEN 1583A, (1) #14 AWG
MOUNT 10"0" AFF FOR WAP
- 8 REPLACE (10) STAGE PIN CONNECTORS
WITH EDISON CONNECTORS. CONNECTORS
ARE ON PIGTAILS.
RELABEL AS INDICATED
- 9 REPLACE (10) STAGE PIN CONNECTORS
WITH EDISON CONNECTORS. REPLACE
(4) STAGE PIN CONNECTORS ON DROP
BOXES WITH EDISON. ALL CONNECTORS
ARE ON PIGTAILS.
RELABEL AS INDICATED
- 10 REPLACE (8) STAGE PIN CONNECTORS
WITH EDISON CONNECTORS. REPLACE
(4) STAGE PIN CONNECTORS ON DROP
BOXES WITH EDISON. ALL CONNECTORS
ARE ON PIGTAILS.
RELABEL AS INDICATED
- 11 REPLACE (8) STAGE PIN CONNECTORS
WITH EDISON CONNECTORS. ALL
CONNECTORS ARE ON PIGTAILS.
RELABEL AS INDICATED
- 12 REPLACE AS INDICATED. PROVIDE (2)
STAGE PIN TO EDISON ADAPTER, PER
TERM PIPE. (4) ADAPTERS TOTAL.
- 13 REPLACE EXISTING NETWORK DEVICE
WITH NEW 2-PORT GATEWAY. REUSE
EXISTING WIRING
- 14 REPLACE CONTROL MODULES IN ALL
DIMMER RACKS.
- 15 REPLACE ALL COMPONENTS IN EXISTING
EQUIPMENT RACK. RECONNECT ALL
EXISTING NETWORK LINES. ADD NEW
NETWORKING AND REROUTE WIRING AS
REQUIRED.

GENERAL NOTES

- 1 COMBINE CONDUIT RUNS WHENEVER POSSIBLE.
- 2 ALL BACK BOX MOUNTED DEVICES ARE TO BE FLUSH MOUNT UNLESS NO OPTION EXISTS.
- 3 ALL WIRING TO BE RUN IN CONDUIT.
- 4 ALL DEVICES NOT SHOWN ARE TO REMAIN AND SHALL BE RESTORED TO FUNCTION AT THE COMPLETION OF THE INSTALLATION.
- 5 CONDUIT MAY NOT BE RUN IN AREAS VISIBLE TO THE AUDIENCE UNLESS NO OPTION EXISTS..
- 6 CONDUIT OR WIREMOLD INSTALLED IN AREAS VISIBLE TO THE AUDIENCE MUST BE PAINTED TO MATCH THE ADJACENT WALL IN A COLOR SELECTED BY THE ARCHITECT.
- 7 ANY ABANDONED BOXES, OR HOLES FROM REMOVAL OF CONDUIT SHALL BE COVERED WITH BLANK COVER PLATES.
- 8 PROJECT IDENTIFIERS USED ON THE SHS ARE UNIQUE TO THESE SHEETS AND WILL NOT CROSS REFERENCE BETWEEN OTHER SHEETS.

**PEERBOLTE
CREATIVE**
DESIGN • ART • PHOTOGRAPHY
109 E PINE STREET
PO BOX 754
WARRENSBURG MO, 64093
PHONE (660)429-1383
FAX (660)429-3666
www.peerbolte.com

NOTE: STRUCTURAL AND ELECTRICAL DRAWINGS ARE FURNISHED BY PEERBOLTE CREATIVE FOR REFERENCE ONLY. PC IS NOT LICENSED TO PERFORM ANY ENGINEERING FOR STRUCTURAL OR ELECTRICAL POWER.

SID DOCUMENTS

DATE: 01/28/2021

REVISED DATE:

SHAWNEE MISSION USD
THEATRICAL LIGHTING UPGRADES 2021
Indian Hills MS, Northwest HS, South HS, West HS

Shawnee Mission School District

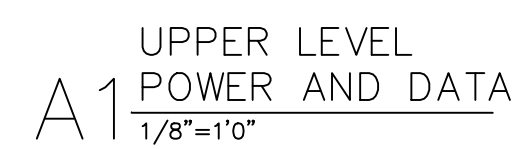
7401 Johnson Dr, Shawnee Mission, KS 66202

THEATRE CONTENTS:
Theatrical Lighting and
Control -
Main Level Devices

TK PROJECT NUMBER:
1707.05-004

SHEET NUMBER:

SHS-TH111

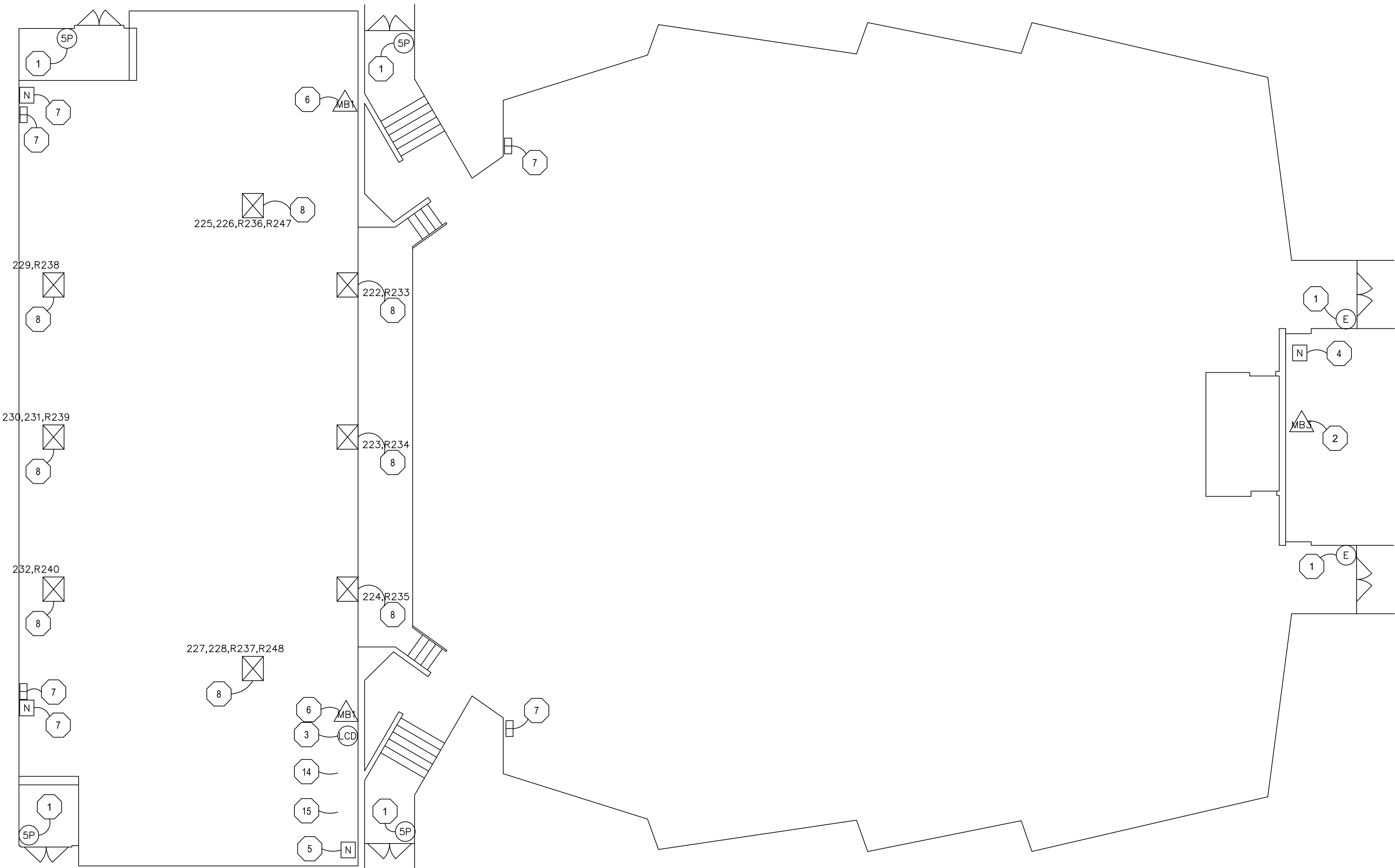


- 1 REPLACE EXISTING ARCHITECTURAL PRESET STATION
REMOVE EXISTING WIRING
PULL NEW (1) BELDEN 8471, (1) #14 AWG
- 2 REMOVE EXISTING ARCHITECTURAL PLUG-IN STATION
REMOVE EXISTING WIRING
PULL NEW (1) BELDEN 1583A, (1) #14 AWG
- 3 REPLACE EXISTING LCD CONTROL STATION
REMOVE EXISTING WIRING
PULL NEW BELDEN 1583A (1) #14 AWG
- 4 REMOVE EXISTING NETWORK GATEWAY
INSTALL NEW 2-PORT GATEWAY USING
EXISTING WIRING.
- 5 REROUTE EXISTING DMX
COURTESY PATH IS BOOTH TO DIMMER RACK
NEW PATH IS BOOTH TO GATEWAY IN EQUIPMENT
RACK, TO DIMMER RACK
- 6 NEW NETWORK JACK
CONDUIT TO EQUIPMENT RACK
CONTAINS (1) BELDEN 1583A, (1) #14 AWG
MOUNT 8"0" AFF FOR WAP
- 7 NEW NETWORK JACK
CONDUIT TO EQUIPMENT RACK
CONTAINS (1) BELDEN 1583A, (1) #14 AWG
MOUNT 10"0" AFF FOR WAP
- 8 REPLACE (10) STAGE PIN CONNECTORS
WITH EDISON CONNECTORS. CONNECTORS
ARE ON PITGAILS.
RELABEL AS INDICATED
- 9 REPLACE (10) STAGE PIN CONNECTORS
WITH EDISON CONNECTORS. REPLACE
(4) STAGE PIN CONNECTORS ON DROP
BUSES WITH EDISON. ALL CONNECTORS
ARE ON PITGAILS.
RELABEL AS INDICATED
- 10 REPLACE (8) STAGE PIN CONNECTORS
WITH EDISON CONNECTORS. REPLACE
(4) STAGE PIN CONNECTORS ON DROP
BUSES WITH EDISON. ALL CONNECTORS
ARE ON PITGAILS.
RELABEL AS INDICATED
- 11 REPLACE (8) STAGE PIN CONNECTORS
WITH EDISON CONNECTORS. ALL
CONNECTORS ARE ON PITGAILS.
RELABEL AS INDICATED
- 12 RELABEL AS INDICATED. PROVIDE (2)
STAGE PIN TO EDISON ADAPTER-PER
TERM PIPE. (4) ADAPTERS TOTAL
- 13 REPLACE EXISTING NETWORK DEVICE
WITH NEW 2-PORT GATEWAY. REUSE
EXISTING WIRING
- 14 REPLACE CONTROL MODULES IN ALL
DIMMER RACKS.
- 15 REPLACE ALL COMPONENTS IN EXISTING
EQUIPMENT RACK. RECONNECT ALL
EXISTING NETWORK LINES. ADD NEW
NETWORKING AND REROUTE WIRING AS
REQUIRED.

- 1 COMBINE CONDUIT RUNS WHENEVER POSSIBLE.
- 2 ALL BACK BOX MOUNTED DEVICES ARE TO BE FLUSH MOUNT UNLESS NO OPTION EXISTS.
- 3 ALL WIRING TO BE RUN IN CONDUIT.
- 4 ALL DEVICES NOT SHOWN ARE TO REMAIN AND SHALL BE RESTORED TO FUNCTION AT THE COMPLETION OF THE INSTALLATION.
- 5 CONDUIT MAY NOT BE RUN IN AREAS VISIBLE TO THE AUDIENCE UNLESS NO OPTION EXISTS..
- 6 CONDUIT OR WIREMOLD INSTALLED IN AREAS VISIBLE TO THE AUDIENCE MUST BE PAINTED TO MATCH THE ADJACENT WALL IN A COLOR SELECTED BY THE ARCHITECT.
- 7 ANY ABANDONED BOXES, OR HOLES FROM REMOVAL OF CONDUIT SHALL BE COVERED WITH BLANK COVER PLATES.
- 8 DEVICE IDENTIFIERS USED ON THE SHS PROJECT ARE UNIQUE TO THESE SHEETS AND WILL NOT CROSS REFERENCE BETWEEN OTHER SHEETS.

NOTE: STRUCTURAL AND ELECTRICAL DRAWINGS ARE FURNISHED BY PEDERBOLTE CREATIVE FOR REFERENCE ONLY. PC IS NOT LICENSED TO PERFORM ANY ENGINEERING FOR STRUCTURAL OR ELECTRICAL POWER.

\\shawnee.mission.k12.mo.us\shared\central\main\awards\2021\Lighting\Drawings\Main\Shawnee Mission
North_Central_2021_Lighting.rvt



MAIN LEVEL
POWER AND DATA
A1 1/8"=1'0"

KEY TO THEATRE LIGHTING SYMBOLS	
	ENTRY STATION (SINGLE GANG BACK BOX)
	5 BUTTON PRESET STATION (SINGLE GANG BACK BOX)
	LCD STATION (MANUFACTURER SUPPLIED BACK BOX)
	1-PORT GATEWAY (MANUFACTURER SUPPLIED BACK BOX)
	2-PORT GATEWAY (MANUFACTURER SUPPLIED BACK BOX)
	NET STATION (SINGLE GANG BACK BOX)
	MULTI BOX TYPE 1 (TWO GANG BACK BOX)
	MULTI BOX TYPE 3 (THREE GANG BACK BOX)
	THEATRICAL RACEWAY
	FLOOR POCKET/WALL BOX

- 1 REPLACE EXISTING BUTTON STATION
REUSE EXISTING WIRING, CONDUIT AND
BACK BOXES
- 2 REMOVE UNIDSN CONNECTOR AND BACK
BOX. REPLACE WITH NEW MB3 3-GANG
BACK BOX. REPLACE EXISTING BELDEN
8471 CABLE WITH (3) BELDEN 1583A
- 3 REPLACE EXISTING LCD WITH NEW LCD
REPLACE BELDEN 8471 WITH BELDEN
1583A
- 4 NEW CONDUIT TO EQUIPMENT RACK
CONTAINS (1) BELDEN 1583A, (1) #14 AWG
MOUNT 8'0" AFF
- 5 NEW CONDUIT TO EQUIPMENT RACK
CONTAINS (1) BELDEN 1583A, (1) #14 AWG
MOUNT 10'0" AFF
- 6 NEW 1/2" CONDUIT TO ACCESSORY RACK
CONTAINS (2) BELDEN 1583A, (1) #14 AWG
MOUNT 2'0" AFF
- 7 1/2" CONDUIT TO EQUIPMENT RACK
CONTAINS (1) BELDEN 1583A, (1) #14 AWG
MOUNT 2'0" AFF
- 8 REPLACE OUTLET PLATES IN FLOOR POCKETS
AS INDICATED. REUSE EXISTING WIRING AND
COVER PLATES.
- 9 CONDUIT TO DIMMER RACKS
CONTAINS (5) 20 AMP CKTS
10 WIRES + GND
1/2" CONDUIT TO EQUIPMENT RACK
CONTAINS (2) BELDEN 1583A (1) #14 AWG
MOUT TO WALL ADJACENT TO EXISTING TORM
PIPES.
- 10 1/2" CONDUIT TO EQUIPMENT RACK
CONTAINS (1) BELDEN 1583A, (1) #14 AWG
MOUNT TO WALL ADJACENT TO EXISTING TORM
DISTRIBUTION.
- 11 1/2" CONDUIT TO EQUIPMENT RACK
CONTAINS (1) BELDEN 1583A, (1) #14 AWG
MOUNT TO PIPE AT END OF DISTRIBUTION
STRIP
- 12 REPLACE (8) STAGE PIN OUTLETS WITH
EDISON OUTLETS. OUTLETS ARE ON PIGTAILS.
LABEL AS INDICATED.
- 13 REPLACE (3) STAGE PIN OUTLETS WITH
EDISON OUTLETS. OUTLETS ARE ON PIGTAILS.
CIRCUIT AND LABEL AS INDICATED.
- 14 3 EXISTING SENSOR+ DIMMER RACKS
UPGRADE CONTROL MODULES TO NEW
CEM3 MODULES
- 15 EXISTING EQUIPMENT RACK
REPLACE NETWORK SWITCHES, PATCH
BAYS, ARCHITECTURAL PROCESSOR, AND
UPS. LABEL ALL PATCH BAYS. ALL
EXISTING COMPONENTS SHALL BE
RECONNECTED, UNLESS SPECIFICALLY
CALLED OUT TO BE REPLACED.

GENERAL NOTES

- 1 COMBINE CONDUIT RUNS WHENEVER
POSSIBLE.
- 2 ALL BACK BOX MOUNTED DEVICES ARE TO
BE FLUSH MOUNT UNLESS NO OPTION
EXISTS.
- 3 ALL WIRING TO BE RUN IN CONDUIT.
- 4 ALL DEVICES NOT SHOWN ARE TO REMAIN
AND SHALL BE RESTORED TO FUNCTION
AT THE COMPLETION OF THE
INSTALLATION.
- 5 CONDUIT MAY NOT BE RUN IN AREAS
VISIBLE TO THE AUDIENCE UNLESS NO
OPTION EXISTS..
- 6 CONDUIT OR WIREMOLD INSTALLED IN
AREAS VISIBLE TO THE AUDIENCE MUST
BE PAINTED TO MATCH THE ADJACENT
WALL IN A COLOR SELECTED BY THE
ARCHITECT.
- 7 ANY ABANDONED BOXES, OR HOLES FROM
REMOVAL OF CONDUIT SHALL BE
COVERED WITH BLANK COVER PLATES.
- 8 DEVICE IDENTIFIERS USED ON THE WHS
PROJECT ARE UNIQUE TO THESE SHEETS
AND WILL NOT CROSS REFERENCE
BETWEEN OTHER SHEETS.

**PEERBOLTE
CREATIVE**
109 E PINE STREET
PO BOX 754
WARRENSBURG MO, 64093
PHONE (660)429-1383
FAX (660)429-5666
www.peerbolte.com

NOTE: STRUCTURAL AND ELECTRICAL DRAWINGS
ARE PREPARED BY PEERBOLTE CREATIVE FOR
REFERENCE ONLY. NO IS NOT LICENSED TO
CONVERT ANY DRAWING FOR STRUCTURAL
OR ELECTRICAL POWER.

BID DOCUMENTS

DATE:
• 01/28/2021

REVISED DATE:

•
•
•

SHAWNEE MISSION USD THEATRICAL LIGHTING UPGRADES 2021

Indian Hills MS, Northwest HS, South HS, West HS

Shawnee Mission School District

7401 Johnson Dr, Shawnee Mission, KS 66202

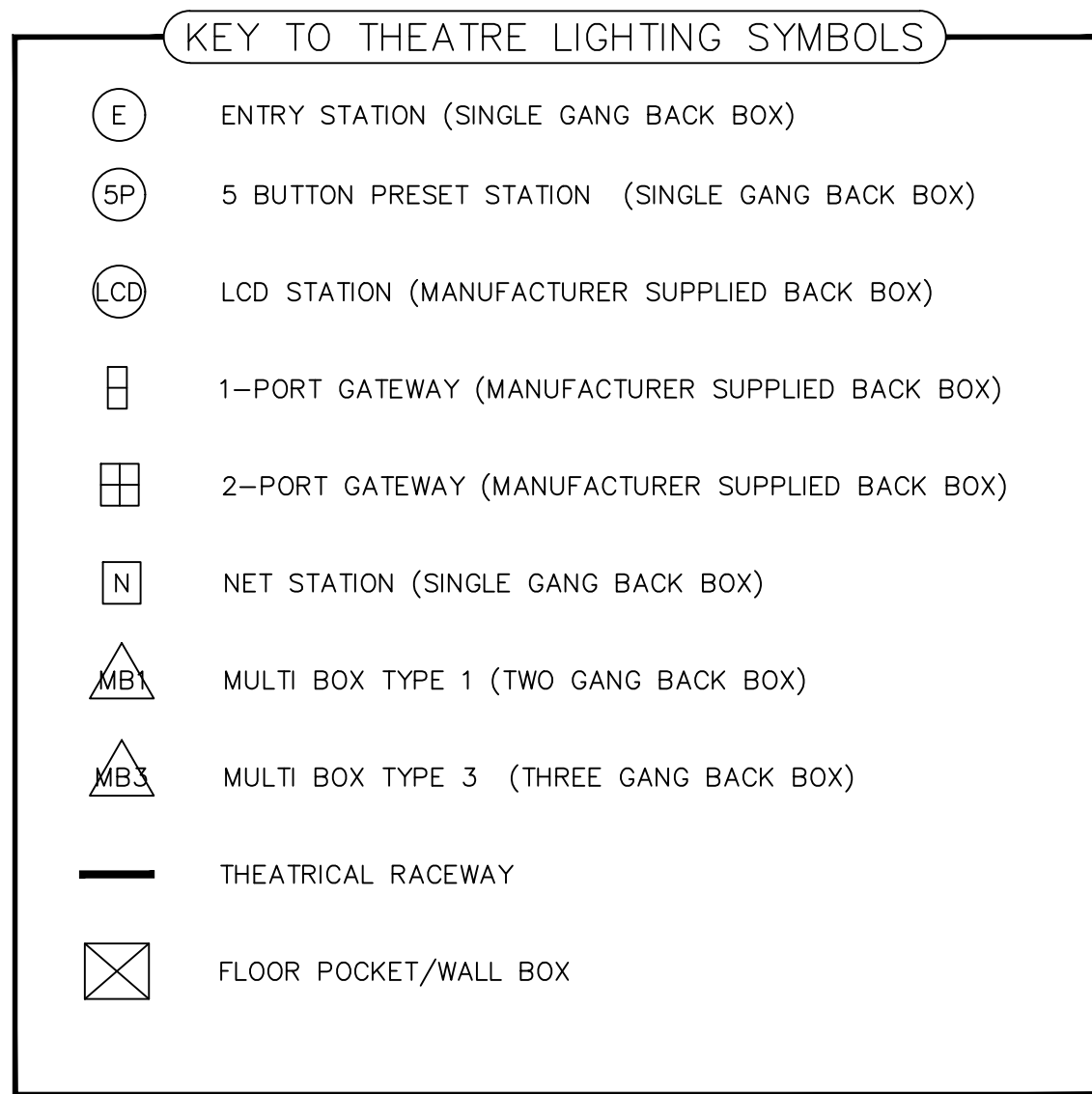
SHEET CONTENTS:
• Theatrical Lighting and Control
• Main Level Devices

HTK PROJECT NUMBER:
• 1707.05-004

SHEET NUMBER:

WHS-TH111

HTK
ARCHITECTS P A



- 1 REPLACE EXISTING BUTTON STATION
REUSE EXISTING WIRING, CONDUIT AND
BACK BOXES
- 2 REMOVE UNION CONNECTOR AND BACK
BOX. REPLACE WITH NEW MB3 3-GANG
BACK BOX. REPLACE EXISTING BELDEN
8471 CABLE WITH (3) BELDEN 1583A
- 3 REPLACE EXISTING LCD WITH NEW LCD
REPLACE BELDEN 8471 WITH BELDEN
1583A
- 4 NEW CONDUIT TO EQUIPMENT RACK
CONTAINS (1) BELDEN 1583A, (1) #14 AWG
MOUNT 8'0" AFF
- 5 NEW CONDUIT TO EQUIPMENT RACK
CONTAINS (1) BELDEN 1583A, (1) #14 AWG
MOUNT 10'0" AFF
- 6 NEW 1/2" CONDUIT TO ACCESSORY RACK
CONTAINS (2) BELDEN 1583A, (1) #14 AWG
MOUNT 2'0" AFF
- 7 1/2" CONDUIT TO EQUIPMENT RACK
CONTAINS (1) BELDEN 1583A, (1) #14 AWG
MOUNT 2'0" AFF
- 8 REPLACE OUTLET PLATES IN FLOOR POCKETS
AS INDICATED. REUSE EXISTING WIRING AND
COVER PLATES.
- 9 CONDUIT TO DIMMER RACKS
CONTAINS (5) 20 AMP CKTS
10 WIRES + GND
1/2" CONDUIT TO EQUIPMENT RACK
CONTAINS (2) BELDEN 1583A (1) #14 AWG
MOUT TO WALL ADJACENT TO EXISTING TORM
PIPES.
- 10 1/2" CONDUIT TO EQUIPMENT RACK
CONTAINS (1) BELDEN 1583A, (1) #14 AWG
MOUNT TO WALL ADJACENT TO EXISTING TORM
DISTRIBUTION.
- 11 1/2" CONDUIT TO EQUIPMENT RACK
CONTAINS (1) BELDEN 1583A, (1) #14 AWG
MOUNT TO PIPE AT END OF DISTRIBUTION
STRIP
- 12 REPLACE (8) STAGE PIN OUTLETS WITH
EDISON OUTLETS. OUTLETS ARE ON PIGTAILS.
LABEL AS INDICATED.
- 13 REPLACE (3) STAGE PIN OUTLETS WITH
EDISON OUTLETS. OUTLETS ARE ON PIGTAILS.
CIRCUIT AND LABEL AS INDICATED.
- 14 3 EXISTING SENSOR+ DIMMER RACKS
UPGRADE CONTROL MODULES TO NEW
CEM3 MODULES
- 15 EXISTING EQUIPMENT RACK
REPLACE NETWORK SWITCHES, PATCH
BAYS, ARCHITECTURAL PROCESSOR, AND
UPS. LABEL ALL PATCH BAYS. ALL
EXISTING COMPONENTS SHALL BE
RECONNECTED, UNLESS SPECIFICALLY
CALLED OUT TO BE REPLACED.

GENERAL NOTES

- 1 COMBINE CONDUIT RUNS WHENEVER
POSSIBLE.
- 2 ALL BACK BOX MOUNTED DEVICES ARE TO
BE FLUSH MOUNT UNLESS NO OPTION
EXISTS.
- 3 ALL WIRING TO BE RUN IN CONDUIT.
- 4 ALL DEVICES NOT SHOWN ARE TO REMAIN
AND SHALL BE RESTORED TO FUNCTION
AT THE COMPLETION OF THE
INSTALLATION.
- 5 CONDUIT MAY NOT BE RUN IN AREAS
VISIBLE TO THE AUDIENCE UNLESS NO
OPTION EXISTS..
- 6 CONDUIT OR WIREMOLD INSTALLED IN
AREAS VISIBLE TO THE AUDIENCE MUST
BE PAINTED TO MATCH THE ADJACENT
WALL IN A COLOR SELECTED BY THE
ARCHITECT.
- 7 ANY ABANDONED BOXES, OR HOLES FROM
REMOVAL OF CONDUIT SHALL BE
COVERED WITH BLANK COVER PLATES.
- 8 DEVICE IDENTIFIERS USED ON THE WHS
PROJECT ARE UNIQUE TO THESE SHEETS
AND WILL NOT CROSS REFERENCE
BETWEEN OTHER SHEETS.

PEERBOLTE
CREATIVE
109 E PINE STREET
PO BOX 754
WARRENSBURG MO, 64093
PHONE (660)429-1383
FAX (660)429-5666
www.peerbolte.com

NOTE: STRUCTURAL AND ELECTRICAL DRAWINGS
AND DIMENSIONS BY PEERBOLTE CREATIVE FOR
REFERENCE ONLY. NO IS NOT LICENSED TO
CARRY ANY WORKING FOR STRUCTURAL
OR ELECTRICAL POWER.

