

	1	2	3	4	5	6	7	8	9	10	11	12	13	14	15	16	17
R																	
Q																	
P																	
N																	
M																	
L																	
K																	
J																	
H																	
G																	
F																	
E																	
D																	
C																	
B																	
A																	
	1	2	3	4	5	6	7	8	9	10	11	12	13	14	15	16	17

2021 ASPHALT IMPROVEMENTS

SHAWNEE MISSION SCHOOL DISTRICT

8200 W. 71st Street

Shawnee Mission, KS 66204

CONSTRUCTION DOCUMENTS

INDEX OF DRAWINGS					PROJECT LOCATIONS					DESIGN TEAM				
GENERAL G000 COVER SHEET					Apache Elementary School 8910 Goddard, Overland Park, Kansas 66214					Shawnee Mission South High School 5800 W 107th St. Overland Park, Kansas 66207				
ARCHITECTURAL SITE					Briarwood Elementary School 5300 W 86th Prairie Village, Kansas 66207					Shawnee Mission West High School 8800 W 85th St. Overland Park, KS 66212				
AS101	PAVEMENT PLAN - APACHE ELEMENTARY SCHOOL				Broadmoor Technical Center 6701 W 83rd St. Shawnee Mission, Kansas 66204					Sunflower Elementary School 8955 Loiret Blvd, Lenexa, Kansas 66219				
AS102	PAVEMENT PLAN - BRIARWOOD ELEMENTARY SCHOOL				Brookridge Elementary School 9920 Lowell Ave. Overland Park, Kansas 66212					Trailwood Elementary School 5101 W 95th St. Overland Park, Kansas 66207				
AS103	PAVEMENT PLAN - BROADMOOR TECHNICAL CENTER				Comanche Elementary School 8200 Grant Ave. Overland Park, Kansas 66204									
AS104	PAVEMENT PLAN - BROOKRIDGE ELEMENTARY SCHOOL				Corinth Elementary School 8301 Mission Rd. Leawood, Kansas 66206									
AS105	PAVEMENT PLAN - COMANCHE ELEMENTARY SCHOOL				Indian Creek Admin Center 4401 103rd Street Shawnee Mission, Kansas 66207									
AS106	PAVEMENT PLAN - CORINTH ELEMENTARY SCHOOL				Indian Woods Middle School 9700 Woodson Dr. #2800 Shawnee Mission, Kansas 66207									
AS107	PAVEMENT PLAN - INDIAN CREEK ADMIN CENTER				Overland Park Elementary School 8150 Santa Fe Dr. Overland Park, Kansas 66204									
AS108	PAVEMENT PLAN - INDIAN WOODS MIDDLE SCHOOL				Shawnee Mission Career Technical Center 11475 W. 93rd Street Overland Park, Kansas 66214									
AS109	PAVEMENT PLAN - OVERLAND PARK ELEMENTARY SCHOOL				Shawnee Mission Operations & Maintenance 6445 Carter Ave. Merriam, Kansas 66203									
AS110	PAVEMENT PLAN - SM CAREER TECHNICAL CENTER													
AS111	PAVEMENT PLAN - SM OPERATIONS & MAINTENANCE													
AS112	PAVEMENT PLAN - SM SOUTH HIGH SCHOOL													
AS113	PAVEMENT PLAN - SM WEST HIGH SCHOOL													
AS114	PAVEMENT PLAN - SUNFLOWER ELEMENTARY SCHOOL													
AS115	PAVEMENT PLAN - TRAILWOOD ELEMENTARY SCHOOL													
AS201	SITE DETAILS													

we design the future™

1828 Walnut Street Suite 922  
Kansas City, MO 64108  
P 816.442.7700

115 Wilcox Street Suite 210  
Castle Rock, CO 80104  
P 720.949.1689

HOLLISANDMILLER.COM

Hollis + Miller Architects  
Missouri State Certificate of Authority  
Architecture # 0000161  
Structure # 200001133

hollis + miller architects®

hollis + miller

Construction Documents

2021 Asphalt Improvements  
Shawnee Mission School District

REVISIONS:

#	Description	Date
---	-------------	------

JOB NO: 20122  
DRAWN BY: AMG  
CHECKED BY: JD  
DATE: 01.27.2021

SMSD PROJECT #  
21-003

G000

COVER SHEET





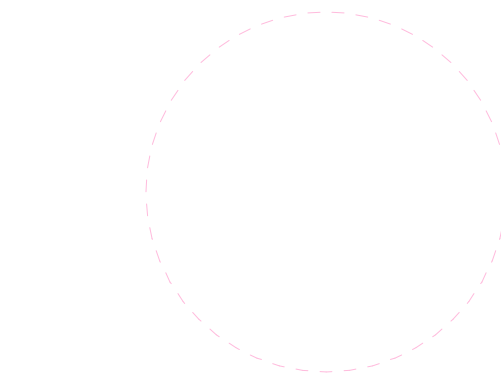
GENERAL NOTES

- 1. REPAINT ALL PARKING LINES, FIRE LANE MARKINGS, NO PARKING MARKINGS, AND CROSSWALK MARKINGS AS REQUIRED BY NEW WORK.
- 2. REMOVE ALL CURB TO SIDEWALK EXPANSION MATERIAL. PROVIDE NEW BACKER ROD AND SEALANT.
- 3. THIS SHEET IS INTENDED TO BE PRINTED IN COLOR TO ACCURATELY IDENTIFY PROJECT SCOPE.
- 4. REFER TO DIVISION 32 FOR PAVING SPECIFICATIONS.
- 5. CONTRACTOR TO FIELD VERIFY ALL AREAS PRIOR TO BID FOR QUANTITIES AND FIELD CONDITIONS.
- 6. PAVEMENT RECONSTRUCTION MAY REQUIRE SOIL TO BE REMOVED FROM THE SITE.
- 7. ALL ASPHALT AND PAVING MATERIALS AND INSTALLATION SHALL MEET ALL STANDARDS OF APWA SECTION 2200 PAVING.
- 8. FINE GRADE AND SEED ALL DISTURBED AREAS.
- 9. QUANTITIES AND LOCATIONS FOR FULL DEPTH REPAIR ARE FOR BIDDING PURPOSES ONLY. CONTRACTOR SHALL VERIFY WITH OWNER / ARCHITECT PRIOR TO THE START OF WORK.
- 10. EDGE MILL AT ALL TRANSITIONS TO SIDEWALKS, CURBS, EXISTING PAVEMENT ETC.
- 11. SURFACE ASPHALT MIX SHALL BE TYPE 3, 10% RECYCLED.

LEGEND

SEALCOAT  
75,500 SF

REVISIONS:		
#	Description	Date



JOB NO: 20122  
DRAWN BY: AMG  
CHECKED BY: JD  
DATE: 01.27.2021





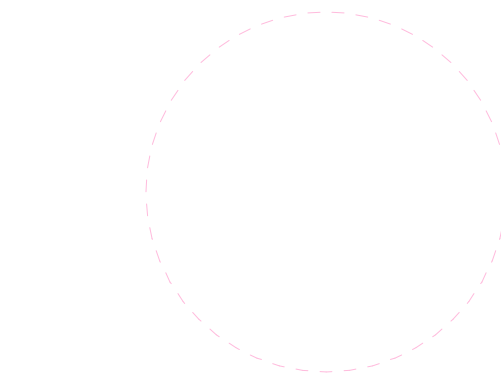
GENERAL NOTES

1. REPAINT ALL PARKING LINES, FIRE LANE MARKINGS, NO PARKING MARKINGS, AND CROSSWALK MARKINGS AS REQUIRED BY NEW WORK.
2. REMOVE ALL CURB TO SIDEWALK EXPANSION MATERIAL. PROVIDE NEW BACKER ROD AND SEALANT.
3. THIS SHEET IS INTENDED TO BE PRINTED IN COLOR TO ACCURATELY IDENTIFY PROJECT SCOPE.
4. REFER TO DIVISION 32 FOR PAVING SPECIFICATIONS.
5. CONTRACTOR TO FIELD VERIFY ALL AREAS PRIOR TO BID FOR QUANTITIES AND FIELD CONDITIONS.
6. PAVEMENT RECONSTRUCTION MAY REQUIRE SOIL TO BE REMOVED FROM THE SITE.
7. ALL ASPHALT AND PAVING MATERIALS AND INSTALLATION SHALL MEET ALL STANDARDS OF APWA SECTION 2200 PAVING.
8. FINE GRADE AND SEED ALL DISTURBED AREAS.
9. QUANTITIES AND LOCATIONS FOR FULL DEPTH REPAIR ARE FOR BIDDING PURPOSES ONLY. CONTRACTOR SHALL VERIFY WITH OWNER / ARCHITECT PRIOR TO THE START OF WORK.
10. EDGE MILL AT ALL TRANSITIONS TO SIDEWALKS, CURBS, EXISTING PAVEMENT ETC.
11. SURFACE ASPHALT MIX SHALL BE TYPE 3, 10% RECYCLED.

LEGEND

SEALCOAT  
95,800 SF

REVISIONS:		
#	Description	Date





1/20/2021 1:34:30 PM



GENERAL NOTES

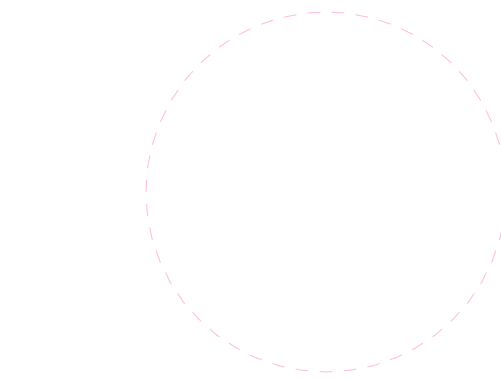
1. REPAINT ALL PARKING LINES, FIRE LANE MARKINGS, NO PARKING MARKINGS, AND CROSSWALK MARKINGS AS REQUIRED BY NEW WORK.
2. REMOVE ALL CURB TO SIDEWALK EXPANSION MATERIAL. PROVIDE NEW BACKER ROD AND SEALANT.
3. THIS SHEET IS INTENDED TO BE PRINTED IN COLOR TO ACCURATELY IDENTIFY PROJECT SCOPE.
4. REFER TO DIVISION 32 FOR PAVING SPECIFICATIONS.
5. CONTRACTOR TO FIELD VERIFY ALL AREAS PRIOR TO BID FOR QUANTITIES AND FIELD CONDITIONS.
6. PAVEMENT RECONSTRUCTION MAY REQUIRE SOIL TO BE REMOVED FROM THE SITE.
7. ALL ASPHALT AND PAVING MATERIALS AND INSTALLATION SHALL MEET ALL STANDARDS OF APWA SECTION 2200 PAVING.
8. FINE GRADE AND SEED ALL DISTURBED AREAS.
9. QUANTITIES AND LOCATIONS FOR FULL DEPTH REPAIR ARE FOR BIDDING PURPOSES ONLY. CONTRACTOR SHALL VERIFY WITH OWNER / ARCHITECT PRIOR TO THE START OF WORK.
10. EDGE MILL AT ALL TRANSITIONS TO SIDEWALKS, CURBS, EXISTING PAVEMENT ETC.
11. SURFACE ASPHALT MIX SHALL BE TYPE 3, 10% RECYCLED.

LEGEND

2" MILL & OVERLAY  
98,600 SF

2021 Asphalt Improvements  
Shawnee Mission School District  
Broadmoor Technical Center  
6701 W 83rd St.  
Shawnee Mission, Kansas 66204

REVISIONS:		
#	Description	Date



JOB NO: 20122  
DRAWN BY: AMG  
CHECKED BY: JD  
DATE: 01.27.2021

AS103





Google Earth  
© 2020 Google

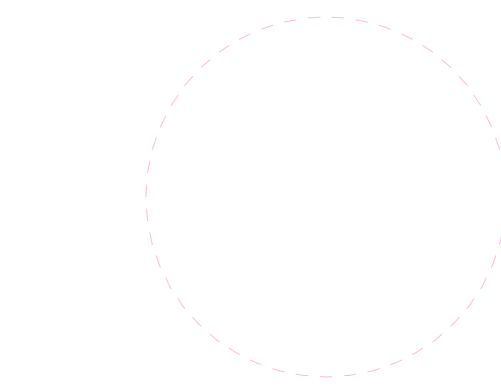
GENERAL NOTES

- 1. REPAINT ALL PARKING LINES, FIRE LANE MARKINGS, NO PARKING MARKINGS, AND CROSSWALK MARKINGS AS REQUIRED BY NEW WORK.
- 2. REMOVE ALL CURB TO SIDEWALK EXPANSION MATERIAL. PROVIDE NEW BACKER ROD AND SEALANT.
- 3. THIS SHEET IS INTENDED TO BE PRINTED IN COLOR TO ACCURATELY IDENTIFY PROJECT SCOPE.
- 4. REFER TO DIVISION 32 FOR PAVING SPECIFICATIONS.
- 5. CONTRACTOR TO FIELD VERIFY ALL AREAS PRIOR TO BID FOR QUANTITIES AND FIELD CONDITIONS.
- 6. PAVEMENT RECONSTRUCTION MAY REQUIRE SOIL TO BE REMOVED FROM THE SITE.
- 7. ALL ASPHALT AND PAVING MATERIALS AND INSTALLATION SHALL MEET ALL STANDARDS OF APWA SECTION 2200 PAVING.
- 8. FINE GRADE AND SEED ALL DISTURBED AREAS.
- 9. QUANTITIES AND LOCATIONS FOR FULL DEPTH REPAIR ARE FOR BIDDING PURPOSES ONLY. CONTRACTOR SHALL VERIFY WITH OWNER / ARCHITECT PRIOR TO THE START OF WORK.
- 10. EDGE MILL AT ALL TRANSITIONS TO SIDEWALKS, CURBS, EXISTING PAVEMENT ETC.
- 11. SURFACE ASPHALT MIX SHALL BE TYPE 3, 10% RECYCLED.

LEGEND

SEALCOAT  
90,200 SF

REVISIONS:		
#	Description	Date



JOB NO: 20122  
DRAWN BY: AMG  
CHECKED BY: JD  
DATE: 01.27.2021





**GENERAL NOTES**

1. REPAINT ALL PARKING LINES, FIRE LANE MARKINGS, NO PARKING MARKINGS, AND CROSSWALK MARKINGS AS REQUIRED BY NEW WORK.
2. REMOVE ALL CURB TO SIDEWALK EXPANSION MATERIAL. PROVIDE NEW BACKER ROD AND SEALANT.
3. THIS SHEET IS INTENDED TO BE PRINTED IN COLOR TO ACCURATELY IDENTIFY PROJECT SCOPE.
4. REFER TO DIVISION 32 FOR PAVING SPECIFICATIONS.
5. CONTRACTOR TO FIELD VERIFY ALL AREAS PRIOR TO BID FOR QUANTITIES AND FIELD CONDITIONS.
6. PAVEMENT RECONSTRUCTION MAY REQUIRE SOIL TO BE REMOVED FROM THE SITE.
7. ALL ASPHALT AND PAVING MATERIALS AND INSTALLATION SHALL MEET ALL STANDARDS OF APWA SECTION 2200 PAVING.
8. FINE GRADE AND SEED ALL DISTURBED AREAS.
9. QUANTITIES AND LOCATIONS FOR FULL DEPTH REPAIR ARE FOR BIDDING PURPOSES ONLY. CONTRACTOR SHALL VERIFY WITH OWNER / ARCHITECT PRIOR TO THE START OF WORK.
10. EDGE MILL AT ALL TRANSITIONS TO SIDEWALKS, CURBS, EXISTING PAVEMENT ETC.
11. SURFACE ASPHALT MIX SHALL BE TYPE 3, 10% RECYCLED.

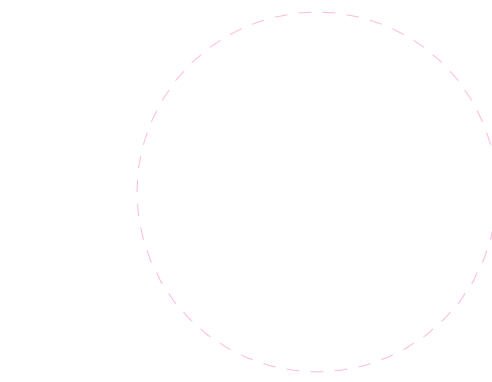
**LEGEND**

- 2" MILL & OVERLAY  
31,238 SF
- 2" MILL & PATCH  
976 SF
- SEALCOAT  
44,400 SF
- CURB & GUTTER  
230 LF



**2021 Asphalt Improvements**  
**Shawnee Mission School District**  
**Comanche Elementary School**  
8200 Grant Ave.  
Overland Park, Kansas 66204

REVISIONS:		
#	Description	Date



JOB NO: 20122  
DRAWN BY: AMG  
CHECKED BY: JD  
DATE: 01.27.2021

**AS105**





Google Earth

© 2020 Google

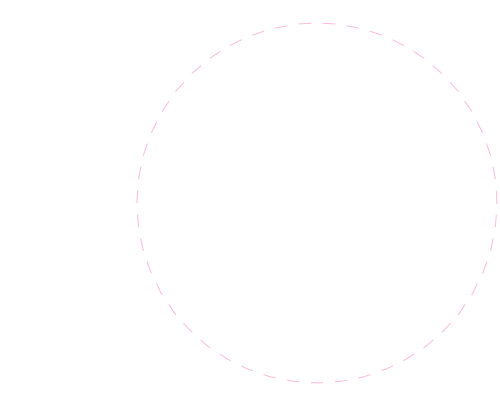
GENERAL NOTES

1. REPAINT ALL PARKING LINES, FIRE LANE MARKINGS, NO PARKING MARKINGS, AND CROSSWALK MARKINGS AS REQUIRED BY NEW WORK.
2. REMOVE ALL CURB TO SIDEWALK EXPANSION MATERIAL. PROVIDE NEW BACKER ROD AND SEALANT.
3. THIS SHEET IS INTENDED TO BE PRINTED IN COLOR TO ACCURATELY IDENTIFY PROJECT SCOPE.
4. REFER TO DIVISION 32 FOR PAVING SPECIFICATIONS.
5. CONTRACTOR TO FIELD VERIFY ALL AREAS PRIOR TO BID FOR QUANTITIES AND FIELD CONDITIONS.
6. PAVEMENT RECONSTRUCTION MAY REQUIRE SOIL TO BE REMOVED FROM THE SITE.
7. ALL ASPHALT AND PAVING MATERIALS AND INSTALLATION SHALL MEET ALL STANDARDS OF APWA SECTION 2200 PAVING.
8. FINE GRADE AND SEED ALL DISTURBED AREAS.
9. QUANTITIES AND LOCATIONS FOR FULL DEPTH REPAIR ARE FOR BIDDING PURPOSES ONLY. CONTRACTOR SHALL VERIFY WITH OWNER / ARCHITECT PRIOR TO THE START OF WORK.
10. EDGE MILL AT ALL TRANSITIONS TO SIDEWALKS, CURBS, EXISTING PAVEMENT ETC.
11. SURFACE ASPHALT MIX SHALL BE TYPE 3, 10% RECYCLED.

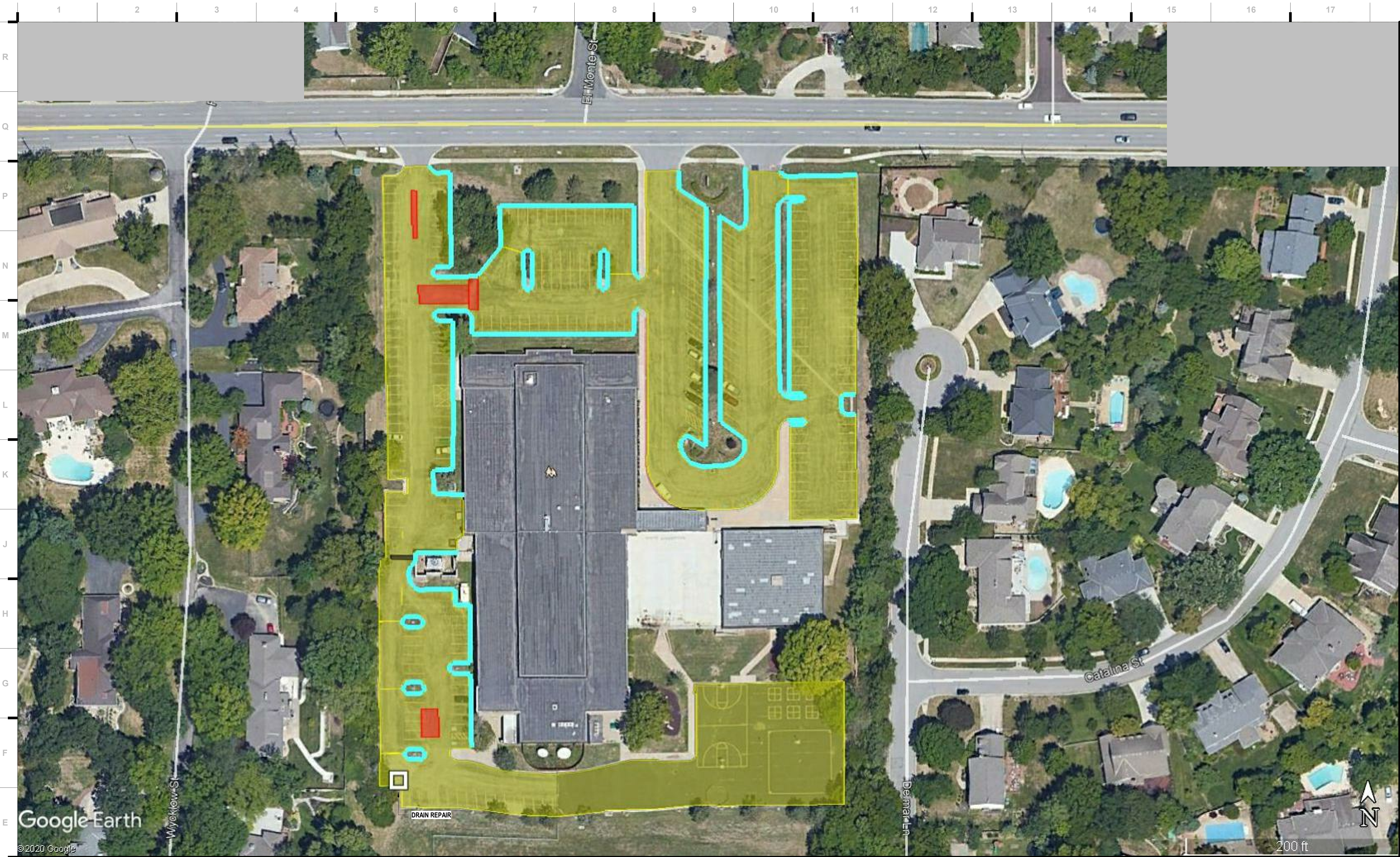
LEGEND

SEALCOAT  
72,200 SF

REVISIONS:		
#	Description	Date







A1		
Scale	Pavement Plan - Indian Creek Admin Center	
N.T.S.		

- GENERAL NOTES**
- REPAINT ALL PARKING LINES, FIRE LANE MARKINGS, NO PARKING MARKINGS, AND CROSSWALK MARKINGS AS REQUIRED BY NEW WORK.
  - REMOVE ALL CURB TO SIDEWALK EXPANSION MATERIAL. PROVIDE NEW BACKER ROD AND SEALANT.
  - THIS SHEET IS INTENDED TO BE PRINTED IN COLOR TO ACCURATELY IDENTIFY PROJECT SCOPE.
  - REFER TO DIVISION 32 FOR PAVING SPECIFICATIONS.
  - CONTRACTOR TO FIELD VERIFY ALL AREAS PRIOR TO BID FOR QUANTITIES AND FIELD CONDITIONS.
  - PAVEMENT RECONSTRUCTION MAY REQUIRE SOIL TO BE REMOVED FROM THE SITE.
  - ALL ASPHALT AND PAVING MATERIALS AND INSTALLATION SHALL MEET ALL STANDARDS OF APWA SECTION 2200 PAVING.
  - FINE GRADE AND SEED ALL DISTURBED AREAS.
  - QUANTITIES AND LOCATIONS FOR FULL DEPTH REPAIR ARE FOR BIDDING PURPOSES ONLY. CONTRACTOR SHALL VERIFY WITH OWNER / ARCHITECT PRIOR TO THE START OF WORK.
  - EDGE MILL AT ALL TRANSITIONS TO SIDEWALKS, CURBS, EXISTING PAVEMENT ETC.
  - SURFACE ASPHALT MIX SHALL BE TYPE 3, 10% RECYCLED.

LEGEND	
	EDGE MILL & OVERLAY 144,300 SF
	8" ASPHALT REPAIR 1,842 SF
	DRAIN ADJUSTMENT 1 EA
	CURB & GUTTER 2,990 LF
	DRAIN REPAIR 28X3

we design the future™

1828 Walnut Street Suite 922  
Kansas City, MO 64108  
1.816.442.7700

115 Wilcox Street Suite 210  
Castle Rock, CO 80104  
1.720.949.1689

HOLLISANDMILLER.COM

Hollis + Miller Architects  
Missouri State Certificate of Authority  
Architecture # 0000161  
Structure # 200601133

hollis + miller architects®  
hollis + miller

2021 Asphalt Improvements

Shawnee Mission School District

Indian Creek Admin Center

4401 103rd Street

Shawnee Mission, Kansas 66207

Construction Documents

REVISIONS:

#	Description	Date

JOB NO: 20122  
DRAWN BY: AMG  
CHECKED BY: JD  
DATE: 01.27.2021

AS107









Google Earth

© 2020 Google

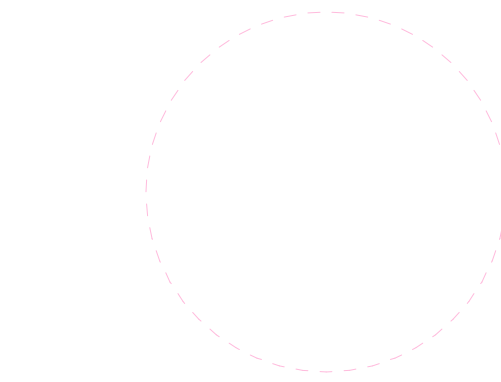
GENERAL NOTES

1. REPAINT ALL PARKING LINES, FIRE LANE MARKINGS, NO PARKING MARKINGS, AND CROSSWALK MARKINGS AS REQUIRED BY NEW WORK.
2. REMOVE ALL CURB TO SIDEWALK EXPANSION MATERIAL. PROVIDE NEW BACKER ROD AND SEALANT.
3. THIS SHEET IS INTENDED TO BE PRINTED IN COLOR TO ACCURATELY IDENTIFY PROJECT SCOPE.
4. REFER TO DIVISION 32 FOR PAVING SPECIFICATIONS.
5. CONTRACTOR TO FIELD VERIFY ALL AREAS PRIOR TO BID FOR QUANTITIES AND FIELD CONDITIONS.
6. PAVEMENT RECONSTRUCTION MAY REQUIRE SOIL TO BE REMOVED FROM THE SITE.
7. ALL ASPHALT AND PAVING MATERIALS AND INSTALLATION SHALL MEET ALL STANDARDS OF APWA SECTION 2200 PAVING.
8. FINE GRADE AND SEED ALL DISTURBED AREAS.
9. QUANTITIES AND LOCATIONS FOR FULL DEPTH REPAIR ARE FOR BIDDING PURPOSES ONLY. CONTRACTOR SHALL VERIFY WITH OWNER / ARCHITECT PRIOR TO THE START OF WORK.
10. EDGE MILL AT ALL TRANSITIONS TO SIDEWALKS, CURBS, EXISTING PAVEMENT ETC.
11. SURFACE ASPHALT MIX SHALL BE TYPE 3, 10% RECYCLED.

LEGEND

4" MILL & 2" OVERLAY  
60,800 SF

REVISIONS:		
#	Description	Date



JOB NO: 20122  
DRAWN BY: AMG  
CHECKED BY: JD  
DATE: 01.27.2021

AS109



1/20/2021 1:34:32 PM



Google Earth

© 2020 Google

### GENERAL NOTES

1. REPAINT ALL PARKING LINES, FIRE LANE MARKINGS, NO PARKING MARKINGS, AND CROSSWALK MARKINGS AS REQUIRED BY NEW WORK.
2. REMOVE ALL CURB TO SIDEWALK EXPANSION MATERIAL. PROVIDE NEW BACKER ROD AND SEALANT.
3. THIS SHEET IS INTENDED TO BE PRINTED IN COLOR TO ACCURATELY IDENTIFY PROJECT SCOPE.
4. REFER TO DIVISION 32 FOR PAVING SPECIFICATIONS.
5. CONTRACTOR TO FIELD VERIFY ALL AREAS PRIOR TO BID FOR QUANTITIES AND FIELD CONDITIONS.
6. PAVEMENT RECONSTRUCTION MAY REQUIRE SOIL TO BE REMOVED FROM THE SITE.
7. ALL ASPHALT AND PAVING MATERIALS AND INSTALLATION SHALL MEET ALL STANDARDS OF APWA SECTION 2200 PAVING.
8. FINE GRADE AND SEED ALL DISTURBED AREAS.
9. QUANTITIES AND LOCATIONS FOR FULL DEPTH REPAIR ARE FOR BIDDING PURPOSES ONLY. CONTRACTOR SHALL VERIFY WITH OWNER / ARCHITECT PRIOR TO THE START OF WORK.
10. EDGE MILL AT ALL TRANSITIONS TO SIDEWALKS, CURBS, EXISTING PAVEMENT ETC.
11. SURFACE ASPHALT MIX SHALL BE TYPE 3, 10% RECYCLED.

### LEGEND

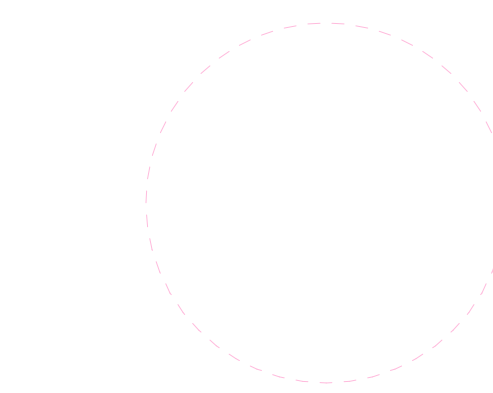
- EDGE MILL & OVERLAY  
95,070 SF
- 8" ASPHALT REPAIR  
16,280 SF
- 2" MILL & OVERLAY  
2,150 SF
- 12" RECONSTRUCTION  
11,860 SF

**A1** Scale  
N.T.S. Pavement Plan - Shawnee Mission Career Technical Center

**2021 Asphalt Improvements**  
Shawnee Mission School District  
Shawnee Mission Career Technical Center  
11475 W. 93rd Street  
Overland Park, Kansas 66214

#### REVISIONS:

#	Description	Date
---	-------------	------



JOB NO: 20122  
DRAWN BY: AMG  
CHECKED BY: JD  
DATE: 01.27.2021

**AS110**





## GENERAL NOTES

1. REPAINT ALL PARKING LINES, FIRE LANE MARKINGS, NO PARKING MARKINGS, AND CROSSWALK MARKINGS AS REQUIRED BY NEW WORK.
2. REMOVE ALL CURB TO SIDEWALK EXPANSION MATERIAL. PROVIDE NEW BACKER ROD AND SEALANT.
3. THIS SHEET IS INTENDED TO BE PRINTED IN COLOR TO ACCURATELY IDENTIFY PROJECT SCOPE.
4. REFER TO DIVISION 32 FOR PAVING SPECIFICATIONS.
5. CONTRACTOR TO FIELD VERIFY ALL AREAS PRIOR TO BID FOR QUANTITIES AND FIELD CONDITIONS.
6. PAVEMENT RECONSTRUCTION MAY REQUIRE SOIL TO BE REMOVED FROM THE SITE.
7. ALL ASPHALT AND PAVING MATERIALS AND INSTALLATION SHALL MEET ALL STANDARDS OF APWA SECTION 2200 PAVING.
8. FINE GRADE AND SEED ALL DISTURBED AREAS.
9. QUANTITIES AND LOCATIONS FOR FULL DEPTH REPAIR ARE FOR BIDDING PURPOSES ONLY. CONTRACTOR SHALL VERIFY WITH OWNER / ARCHITECT PRIOR TO THE START OF WORK.
10. EDGE MILL AT ALL TRANSITIONS TO SIDEWALKS, CURBS, EXISTING PAVEMENT ETC.
11. SURFACE ASPHALT MIX SHALL BE TYPE 3, 10% RECYCLED.

## LEGEND

8" ASPHALT 4" BASE ROCK 14,000 SF
SEAL COAT 103,400

# Google Earth

100 ft

◀Z

## 2021 Asphalt Improvements

**Shawnee Mission Operations & Maintenance**  
6445 Carter Ave.  
Merriam, Kansas 66203

**Construction Documents**

hollis + miller architects®

**we design the future®**

**1828 Walnut Street Suite 922**  
Kansas City, MO 64108  
t 816.442.7700

**115 Wilcox Street Suite 210**  
Castle Rock, CO 80104  
t 720.949.1689

**HOLLISANDMILLER.COM**

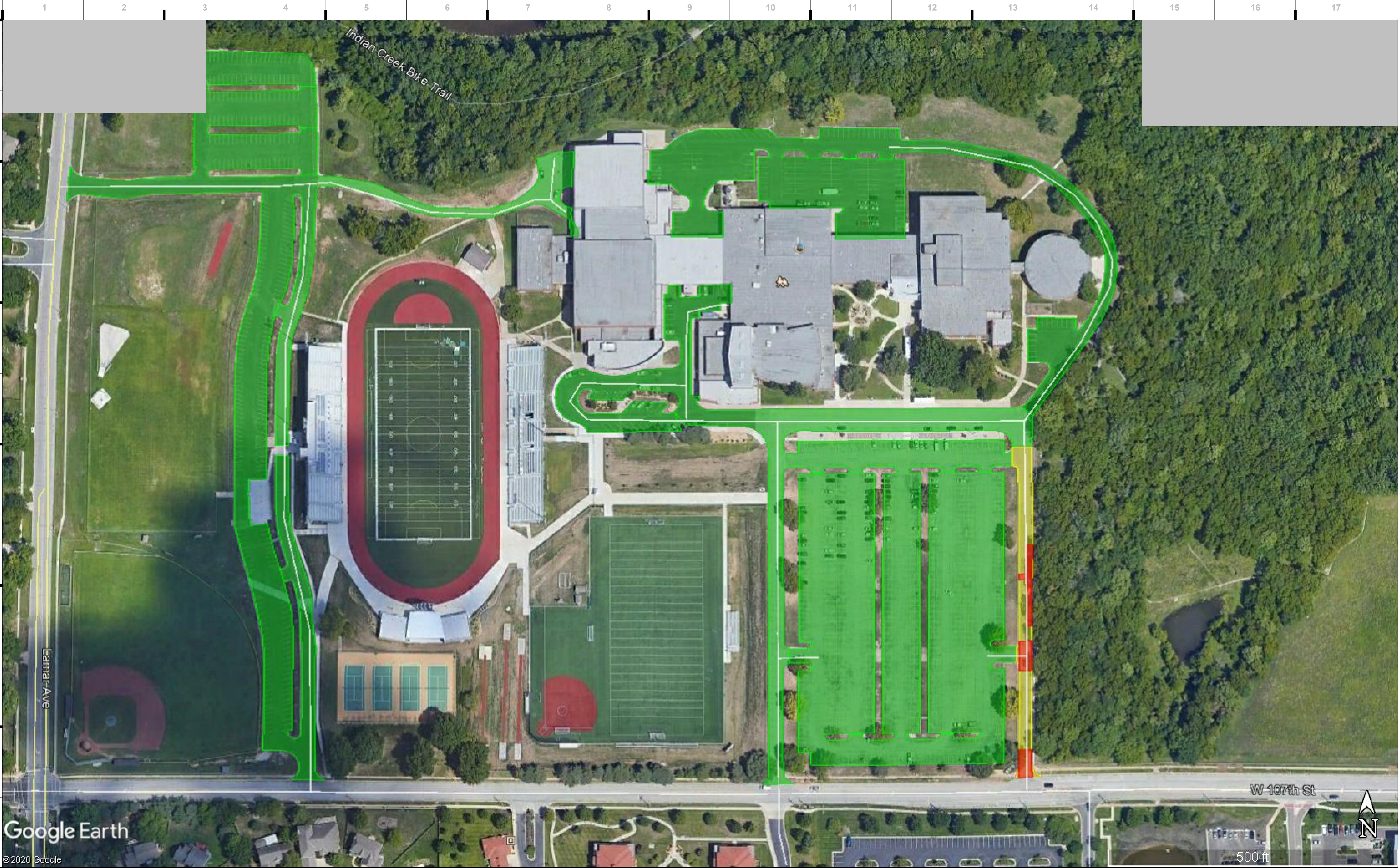
Hollis + Miller Architects  
Missouri State Certificate of Authority  
Architecture # 0000161  
Structure # 2006031333

JOB NO: 20122  
DRAWN BY: AMG  
CHECKED BY: JD  
DATE: 01.27.2021

# AS111

## PAVEMENT PLAN





Google Earth  
© 2020 Google

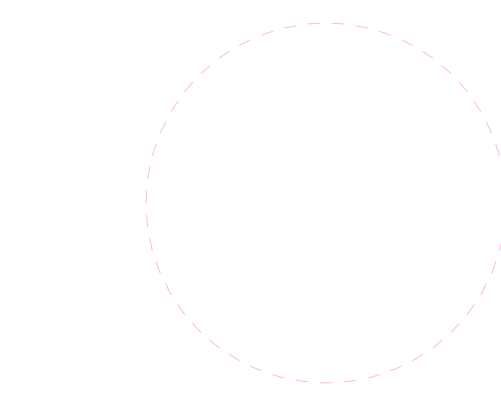
GENERAL NOTES

1. REPAINT ALL PARKING LINES, FIRE LANE MARKINGS, NO PARKING MARKINGS, AND CROSSWALK MARKINGS AS REQUIRED BY NEW WORK.
2. REMOVE ALL CURB TO SIDEWALK EXPANSION MATERIAL. PROVIDE NEW BACKER ROD AND SEALANT.
3. THIS SHEET IS INTENDED TO BE PRINTED IN COLOR TO ACCURATELY IDENTIFY PROJECT SCOPE.
4. REFER TO DIVISION 32 FOR PAVING SPECIFICATIONS.
5. CONTRACTOR TO FIELD VERIFY ALL AREAS PRIOR TO BID FOR QUANTITIES AND FIELD CONDITIONS.
6. PAVEMENT RECONSTRUCTION MAY REQUIRE SOIL TO BE REMOVED FROM THE SITE.
7. ALL ASPHALT AND PAVING MATERIALS AND INSTALLATION SHALL MEET ALL STANDARDS OF APWA SECTION 2200 PAVING.
8. FINE GRADE AND SEED ALL DISTURBED AREAS.
9. QUANTITIES AND LOCATIONS FOR FULL DEPTH REPAIR ARE FOR BIDDING PURPOSES ONLY. CONTRACTOR SHALL VERIFY WITH OWNER / ARCHITECT PRIOR TO THE START OF WORK.
10. EDGE MILL AT ALL TRANSITIONS TO SIDEWALKS, CURBS, EXISTING PAVEMENT ETC.
11. SURFACE ASPHALT MIX SHALL BE TYPE 3, 10% RECYCLED.

LEGEND

- 4" EDGE MILL & 2" OVERLAY  
14,400 SF
- 8" ASPHALT REPAIR  
4,400 SF
- SEAL COAT  
501,300 SF

REVISIONS:		
#	Description	Date





1/20/2021 1:34:33 PM



GENERAL NOTES

1. REPAINT ALL PARKING LINES, FIRE LANE MARKINGS, NO PARKING MARKINGS, AND CROSSWALK MARKINGS AS REQUIRED BY NEW WORK.
2. REMOVE ALL CURB TO SIDEWALK EXPANSION MATERIAL. PROVIDE NEW BACKER ROD AND SEALANT.
3. THIS SHEET IS INTENDED TO BE PRINTED IN COLOR TO ACCURATELY IDENTIFY PROJECT SCOPE.
4. REFER TO DIVISION 32 FOR PAVING SPECIFICATIONS.
5. CONTRACTOR TO FIELD VERIFY ALL AREAS PRIOR TO BID FOR QUANTITIES AND FIELD CONDITIONS.
6. PAVEMENT RECONSTRUCTION MAY REQUIRE SOIL TO BE REMOVED FROM THE SITE.
7. ALL ASPHALT AND PAVING MATERIALS AND INSTALLATION SHALL MEET ALL STANDARDS OF APWA SECTION 2200 PAVING.
8. FINE GRADE AND SEED ALL DISTURBED AREAS.
9. QUANTITIES AND LOCATIONS FOR FULL DEPTH REPAIR ARE FOR BIDDING PURPOSES ONLY. CONTRACTOR SHALL VERIFY WITH OWNER / ARCHITECT PRIOR TO THE START OF WORK.
10. EDGE MILL AT ALL TRANSITIONS TO SIDEWALKS, CURBS, EXISTING PAVEMENT ETC.
11. SURFACE ASPHALT MIX SHALL BE TYPE 3, 10% RECYCLED.

LEGEND

- SEALCOAT  
292,000 SF
- RING ADJUSTMENT  
1 EA
- DRAIN ADJUSTMENT  
3 EA

REVISIONS:		
#	Description	Date

JOB NO: 20122  
DRAWN BY: AMG  
CHECKED BY: JD  
DATE: 01.27.2021

AS113



1/20/2021 1:34:33 PM



Google Earth  
© 2020 Google

GENERAL NOTES

1. REPAINT ALL PARKING LINES, FIRE LANE MARKINGS, NO PARKING MARKINGS, AND CROSSWALK MARKINGS AS REQUIRED BY NEW WORK.
2. REMOVE ALL CURB TO SIDEWALK EXPANSION MATERIAL. PROVIDE NEW BACKER ROD AND SEALANT.
3. THIS SHEET IS INTENDED TO BE PRINTED IN COLOR TO ACCURATELY IDENTIFY PROJECT SCOPE.
4. REFER TO DIVISION 32 FOR PAVING SPECIFICATIONS.
5. CONTRACTOR TO FIELD VERIFY ALL AREAS PRIOR TO BID FOR QUANTITIES AND FIELD CONDITIONS.
6. PAVEMENT RECONSTRUCTION MAY REQUIRE SOIL TO BE REMOVED FROM THE SITE.
7. ALL ASPHALT AND PAVING MATERIALS AND INSTALLATION SHALL MEET ALL STANDARDS OF APWA SECTION 2200 PAVING.
8. FINE GRADE AND SEED ALL DISTURBED AREAS.
9. QUANTITIES AND LOCATIONS FOR FULL DEPTH REPAIR ARE FOR BIDDING PURPOSES ONLY. CONTRACTOR SHALL VERIFY WITH OWNER / ARCHITECT PRIOR TO THE START OF WORK.
10. EDGE MILL AT ALL TRANSITIONS TO SIDEWALKS, CURBS, EXISTING PAVEMENT ETC.
11. SURFACE ASPHALT MIX SHALL BE TYPE 3, 10% RECYCLED.

LEGEND

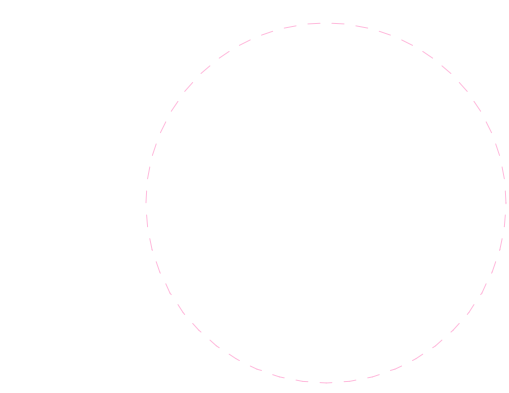
- 4" EDGE MILL & OVERLAY  
28,355 SF
- 8" CONCRETE APPROACH  
1,284 SF
- SEAL COAT  
82,870 SF
- CURB & GUTTER  
165 LF

A1 Scale  
N.T.S. Pavement Plan - Sunflower Elementary School

2021 Asphalt Improvements  
Shawnee Mission School District  
Sunflower Elementary School  
8955 Loiret Blvd,  
Lenexa, Kansas 66219

REVISIONS:

#	Description	Date
---	-------------	------



JOB NO: 20122  
DRAWN BY: AMG  
CHECKED BY: JD  
DATE: 01.27.2021

AS114

we design the future®

1828 Walnut Street Suite 922  
Kansas City, MO 64108  
P 816.442.7700

115 Wilcox Street Suite 210  
Castle Rock, CO 80104  
P 720.949.1689

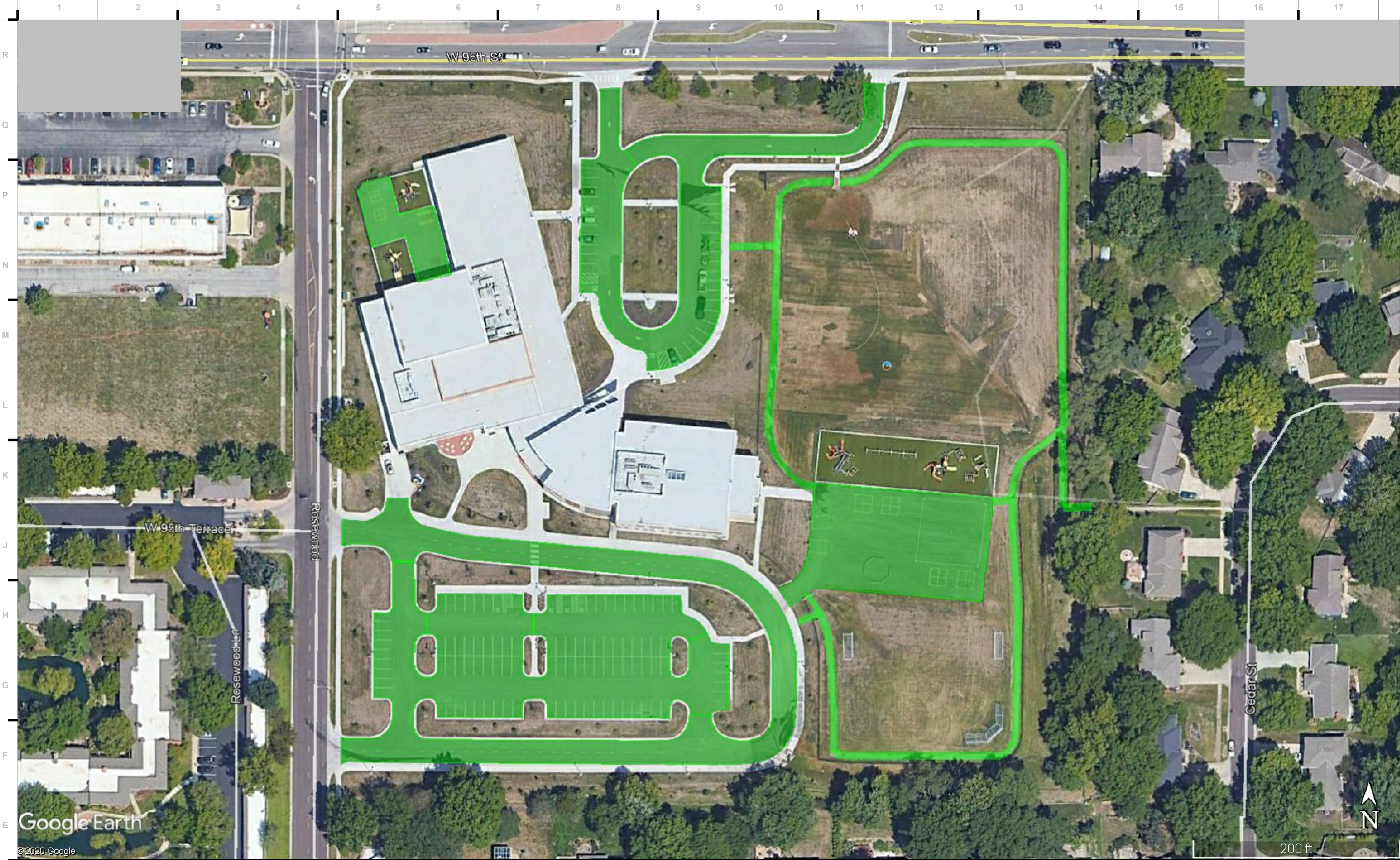
HOLLISANDMILLER.COM

Hollis + Miller Architects  
Missouri State Certificate of Authority  
Architecture # 0000161  
Structure # 200601133

hollis + miller architects®  
hollis + miller

Construction Documents





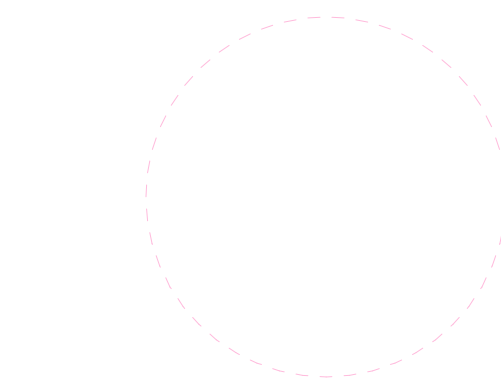
GENERAL NOTES

1. REPAINT ALL PARKING LINES, FIRE LANE MARKINGS, NO PARKING MARKINGS, AND CROSSWALK MARKINGS AS REQUIRED BY NEW WORK.
2. REMOVE ALL CURB TO SIDEWALK EXPANSION MATERIAL. PROVIDE NEW BACKER ROD AND SEALANT.
3. THIS SHEET IS INTENDED TO BE PRINTED IN COLOR TO ACCURATELY IDENTIFY PROJECT SCOPE.
4. REFER TO DIVISION 32 FOR PAVING SPECIFICATIONS.
5. CONTRACTOR TO FIELD VERIFY ALL AREAS PRIOR TO BID FOR QUANTITIES AND FIELD CONDITIONS.
6. PAVEMENT RECONSTRUCTION MAY REQUIRE SOIL TO BE REMOVED FROM THE SITE.
7. ALL ASPHALT AND PAVING MATERIALS AND INSTALLATION SHALL MEET ALL STANDARDS OF APWA SECTION 2200 PAVING.
8. FINE GRADE AND SEED ALL DISTURBED AREAS.
9. QUANTITIES AND LOCATIONS FOR FULL DEPTH REPAIR ARE FOR BIDDING PURPOSES ONLY. CONTRACTOR SHALL VERIFY WITH OWNER / ARCHITECT PRIOR TO THE START OF WORK.
10. EDGE MILL AT ALL TRANSITIONS TO SIDEWALKS, CURBS, EXISTING PAVEMENT ETC.
11. SURFACE ASPHALT MIX SHALL BE TYPE 3, 10% RECYCLED.

LEGEND

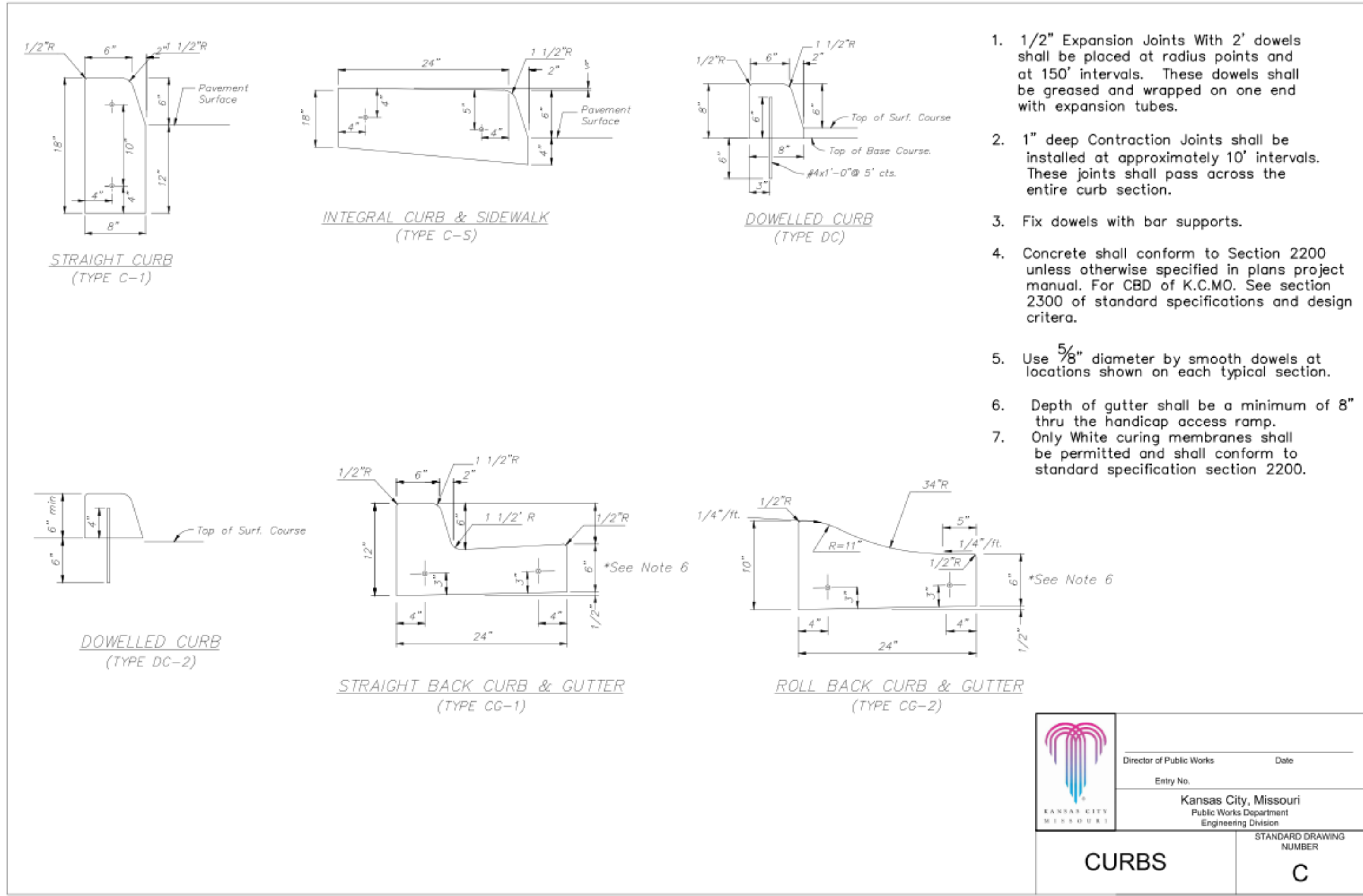
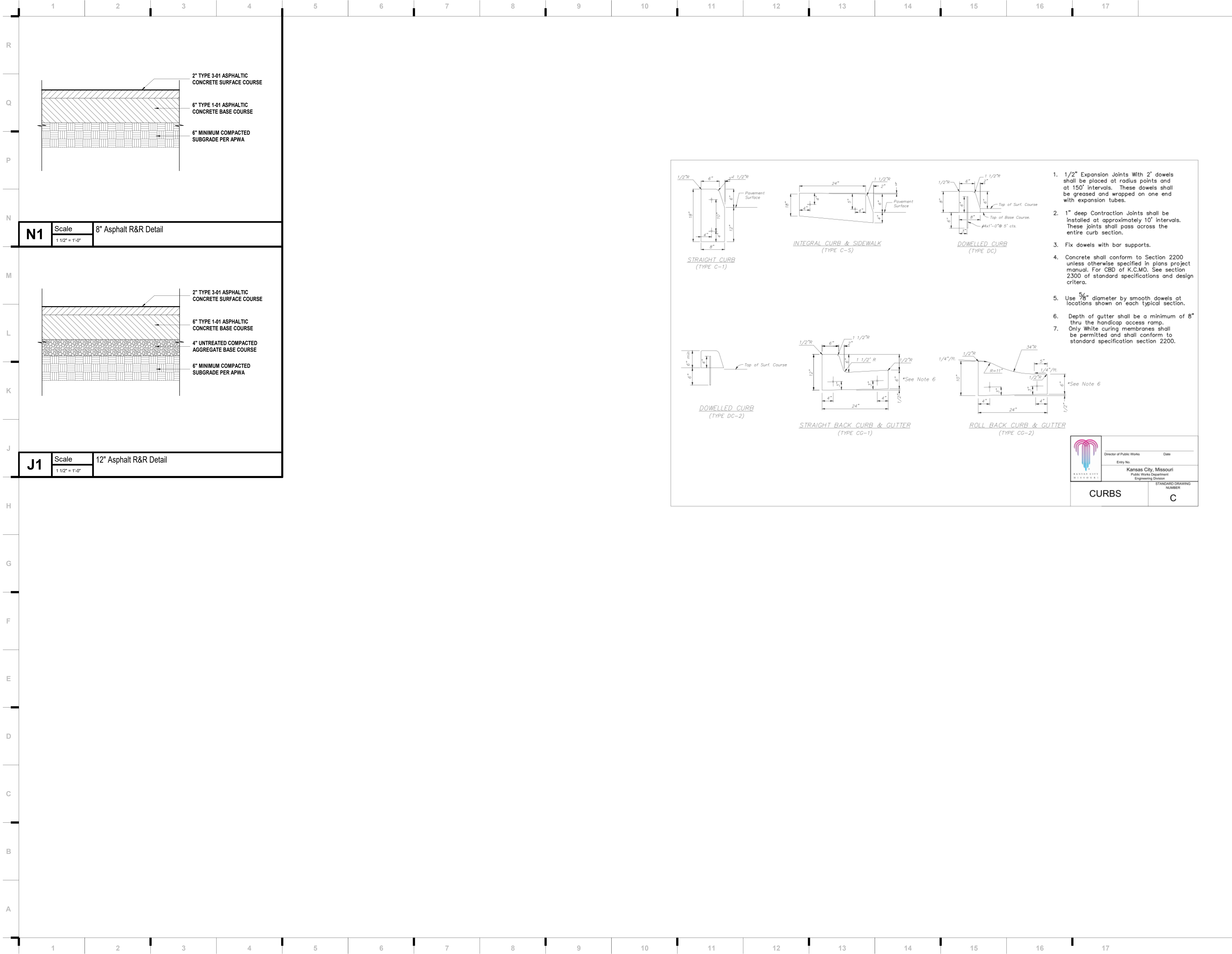
SEALCOAT  
114,300 SF

REVISIONS:		
#	Description	Date





1/20/2021 1:34:33 PM



we design the future®

1828 Walnut Street Suite 922  
Kansas City, MO 64108  
t 816.442.7700

115 Wilcox Street Suite 210  
Castle Rock, CO 80104  
t 720.949.1689

HOLLISANDMILLER.COM

Hollis + Miller Architects  
Missouri State Certificate of Authority  
Architecture # 00001651  
Structure # 2006031333

hollis + miller architects®

2021 Asphalt Improvements  
Shawnee Mission School District

REVISIONS:

#	Description	Date
---	-------------	------

JOB NO: 20122  
DRAWN BY: AMG  
CHECKED BY: JD  
DATE: 01.27.2021

AS201

SITE DETAILS