

DISTRICT 20 AT A GLANCE – 2020

Ignite the Power and Potential of Each Student

Plus 72 preschool students in the District. Diverse population, including 37.7% White, 32.5% Hispanic, 18% Black, 7.4% Asian, and other backgrounds. 58.7% of students qualify as low income.

1,413 STUDENTS

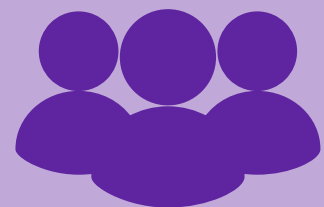


41 HOME LANGUAGES



District families have identified at least 41 different world languages spoken at home. Interpreters are provided for parent-teacher meetings and report cards to assist with communication and family engagement. 20.4% of students in the District are English Learners.

117 TEACHERS



District instructional coaches, paraprofessionals, social workers, psychologists, and other support staff are also at each school. 55.3% of teachers have Master's Degree or higher. 100% of teachers evaluated as proficient or excellent.

Average number of students per teacher in the District. Each classroom has an average of 20 students. Lower grades are typically smaller in class size than upper grades. Special Education teachers and paraprofessionals are not included in this calculation.



16 : 1 STUDENT TEACHER RATIO

The District has three schools with students in Kindergarten through 8th Grade: Greenbrook Elementary, Waterbury Elementary, and Spring Wood Middle School. The District also has an Early Childhood Center for students ages 3-5.

3 SCHOOLS



1 : 1 TECHNOLOGY



Every PK-8 student has their own Chromebook and each classroom is equipped with a Promethean Board. The District recently opened new Innovation Centers at 3 schools, with books, state-of-the-art technology & makerspaces.

52% 48% STUDENT GROWTH



Growth of Student Proficiency Levels from 2018 to 2019 was 52% in Math and 48% in English Language Arts. Proficiency shows whether or not students have mastered a common, high standard. Growth recognizes progress toward and beyond the standard regardless of where each student started. 2020 Data not available due to COVID-19.

\$22M DISTRICT FINANCES

The District's Financial Profile is 3.90 or Financial Recognition which is the highest award a district can receive in Illinois. The District spends an average of \$12,350 per student at each school in the district.



KEENEYVILLE ELEMENTARY SCHOOL DISTRICT 20
5540 ARLINGTON DRIVE E
HANOVER PARK, IL 60133