



8612 Eagle Creek Parkway, Savage, MN 55378
Tel: (952) 746-5880 ♦ Fax: (952) 746-5882
Mailbox@FieldConsultingInc.com
www.FieldConsultingInc.com

Independent School District #191
200 Burnsville Pkwy
Burnsville, MN 55337
Attn: Mr. Glenn Simon

RE: Lead in Drinking Water Sampling
SITE: River Ridge Education Center
DATE: January 2019

Dear Glenn Simon,

Field Environmental Consulting, Inc. (FIELD ENVIRONMENTAL) appreciates the opportunity to provide results for lead in drinking water sampling conducted at River Ridge Education Center.

Initial sampling ("first draw") was completed on Thursday, November 1, 2018*. All seven (7) initial first draw samples collected at River Ridge Education Center were below the recommended limit of 20 ppb (or µg/L).

Analysis was conducted by Pace Analytical Services, Inc. of Minneapolis, Minnesota using EPA Method 200.8 ICPMS for determination of trace elements in drinking water.

PREPARED and REVIEWED BY:

Field Environmental Consulting, Inc.

A handwritten signature in cursive script, appearing to read "Amy Weinzierl".

Amy Weinzierl (CSP #27824)
Environmental Health and Safety Manager
amy@fieldconsultinginc.com
952-746-5880

*sampling was performed by ISD #191 Health & Safety Supervisor

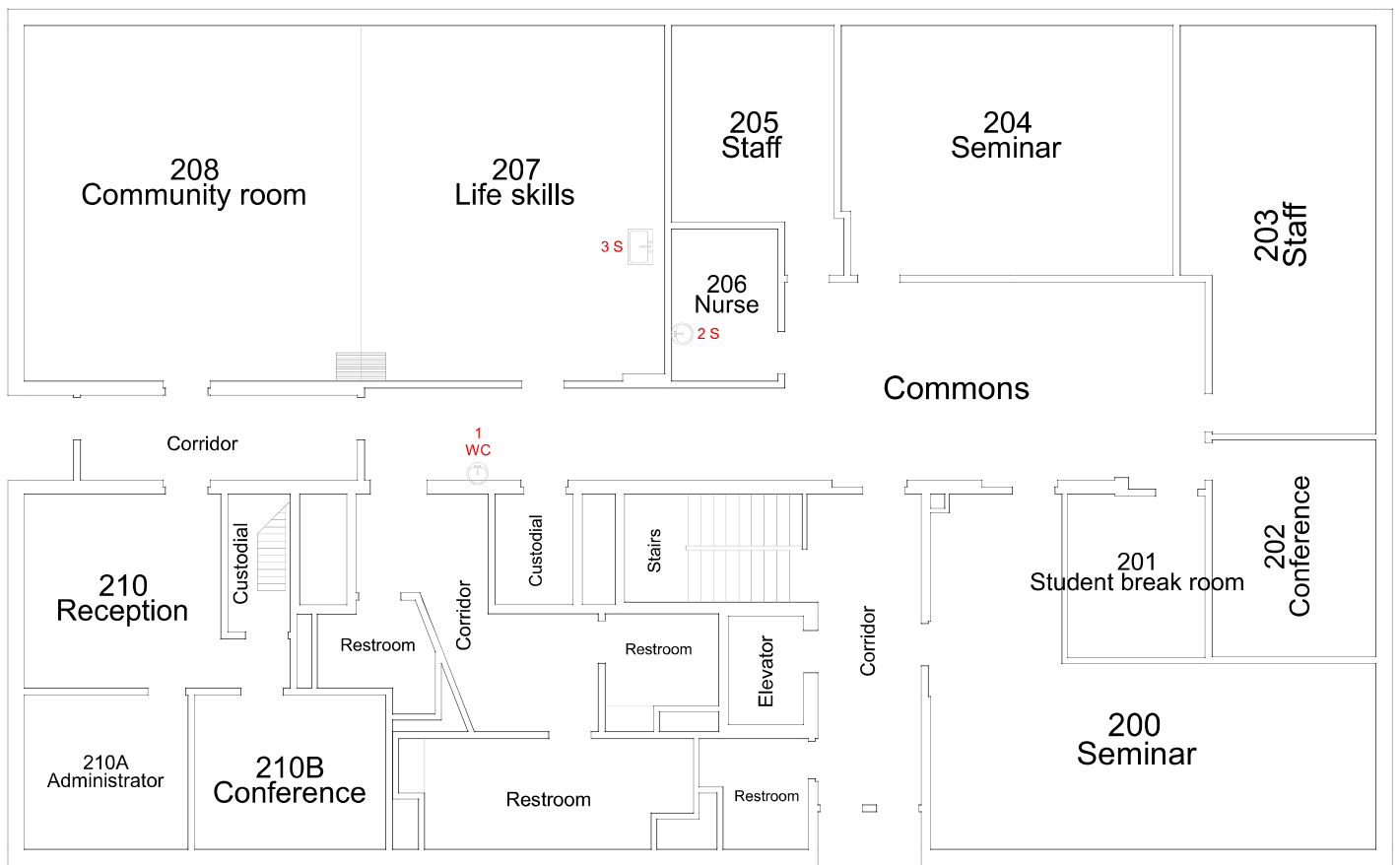
LEAD IN THE WATER TESTING**BUILDING: River Ridge****DATE 11/1/2018**

TYPE OF FAUCET WC - water cooler DF - drinking fountain S - Sink K - Kettle BF - Bottle Filler

Lead < = 20 ppb, **Lead > 20 ppb (Action Level)**, ND= None Detected

	LABEL	BUILDING	ROOM/LOCATION	TYPE OF FAUCET	LEAD RESULT (ppb or µg/L)
1	01	RR	UL Hallway outside custodial closet	WC	ND
2	02	RR	206	S	ND
3	03	RR	207	S	ND
4	04	RR	100	S	3.0
5	05	RR	105	S	ND
6	06	RR	LL Hallway outside custodial closet	WC	3.2
7	07	RR	111	S	3.9

River Ridge



1st Floor

River Ridge

