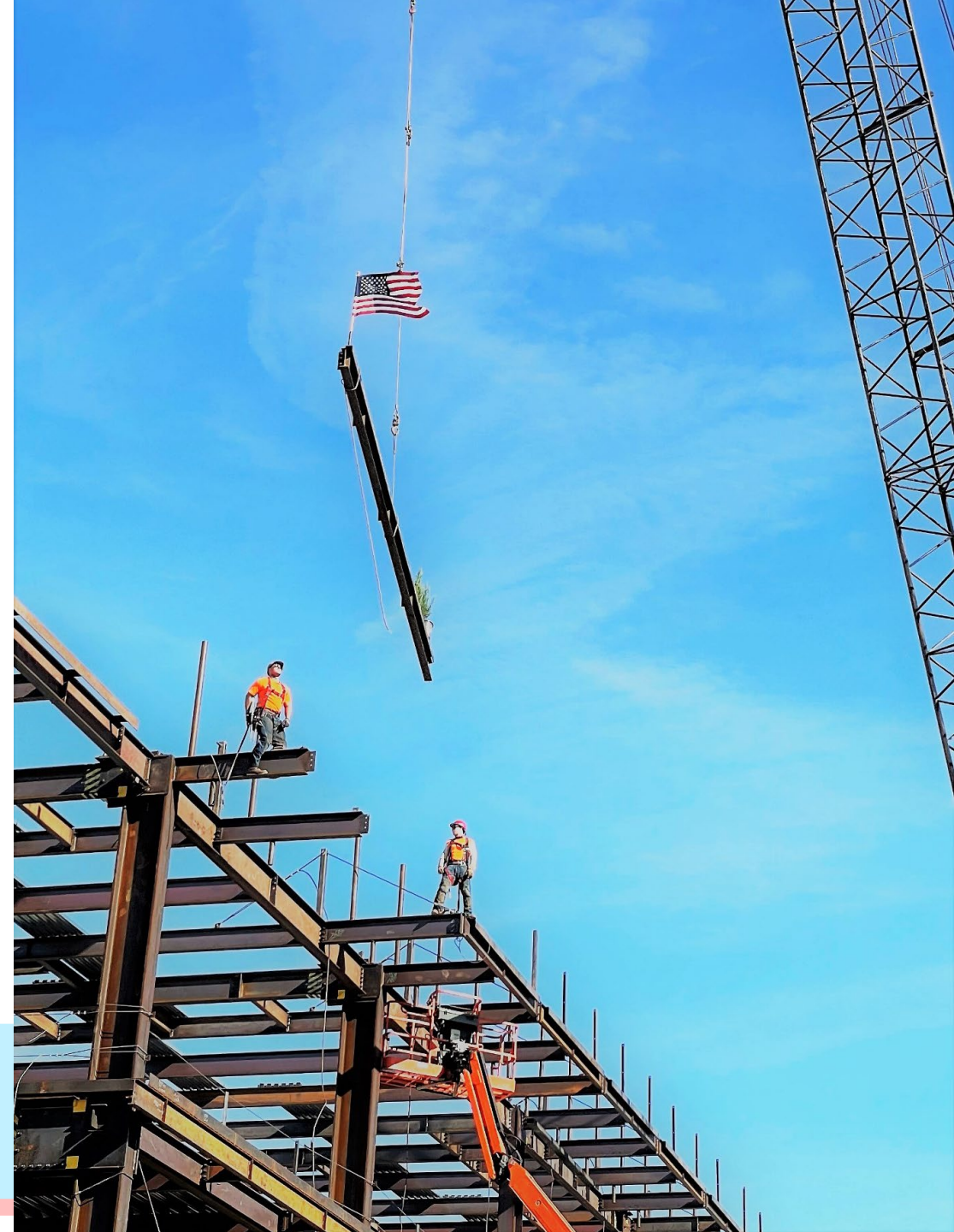




Citizens' Bond Oversight Committee **Facilities and Measure G Update**

January 20, 2021

Presented By: CJ Knowland
Director, Facilities, Maintenance, Operations, and
Transportation



Multistory STEM Building – Topping Out

What is topping out?

- Topping out is when the last piece of structural framing (steel or wood) is placed at the highest point of the building.
- It is often recognized by having the project stakeholders write a message, place an evergreen tree, and place the national flag on the structural member.
- The tradition originates from Scandinavia where they would place a leafy branch at the highest point to show appreciation to the Earth for providing the materials used for the structure.
- In modern construction, it is known to commemorate that there were no significant injuries in the placing of the framing and to ensure the future success for the remaining portions of the project.



LAHS Multistory STEM Building Milestone Schedule



January
2021

September 2021
Dried-In

February 2022
Conditioned Space
and Installation of
Finishes

July
2022

Commissioning

July 2022
Beneficial
Occupancy

January 2021
Structural Steel
Topping Out

June 2021
Brick Veneer
Installation

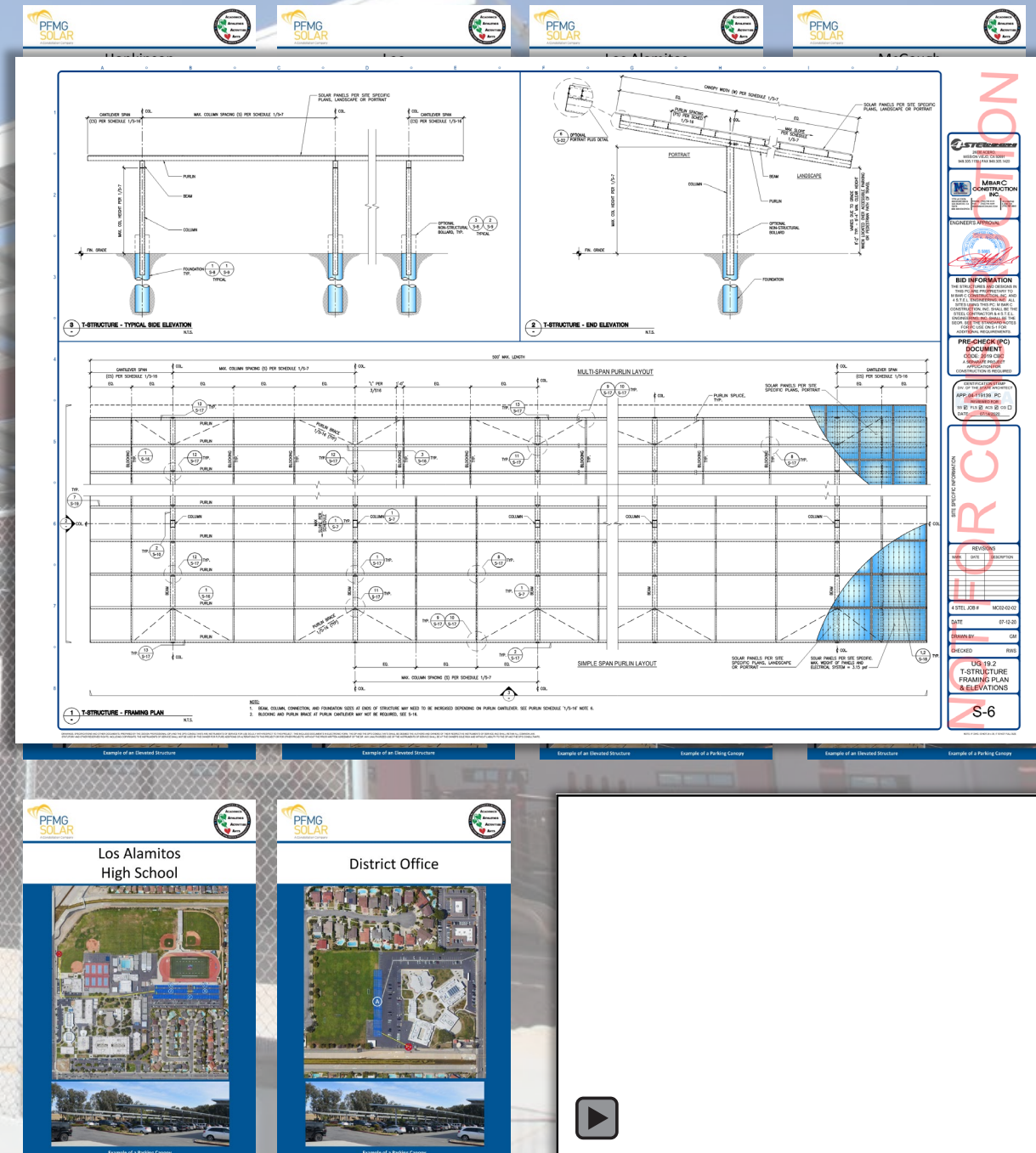
December 2021
Interior Framing

May 2022
Construction
Substantial
Completion

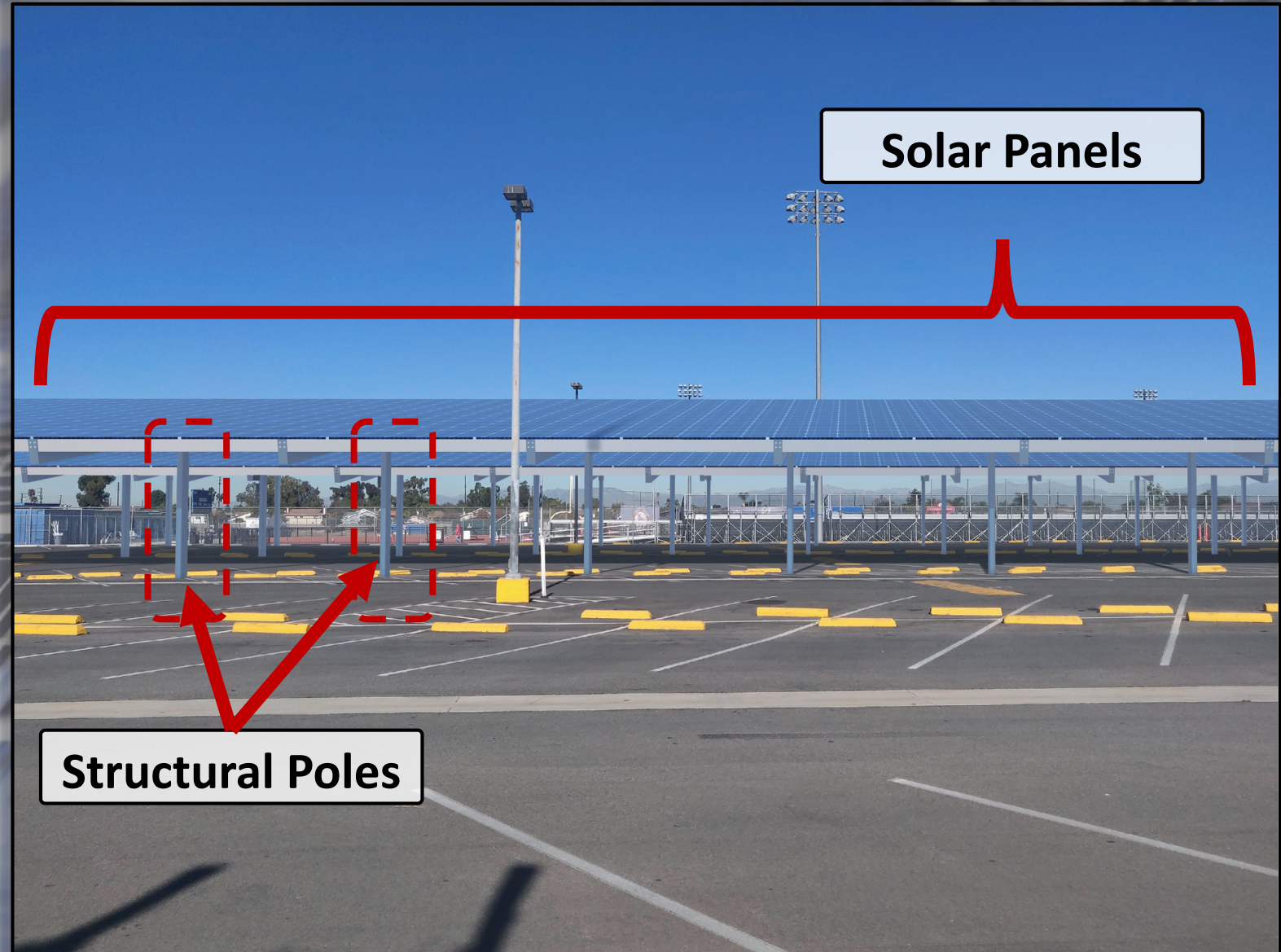
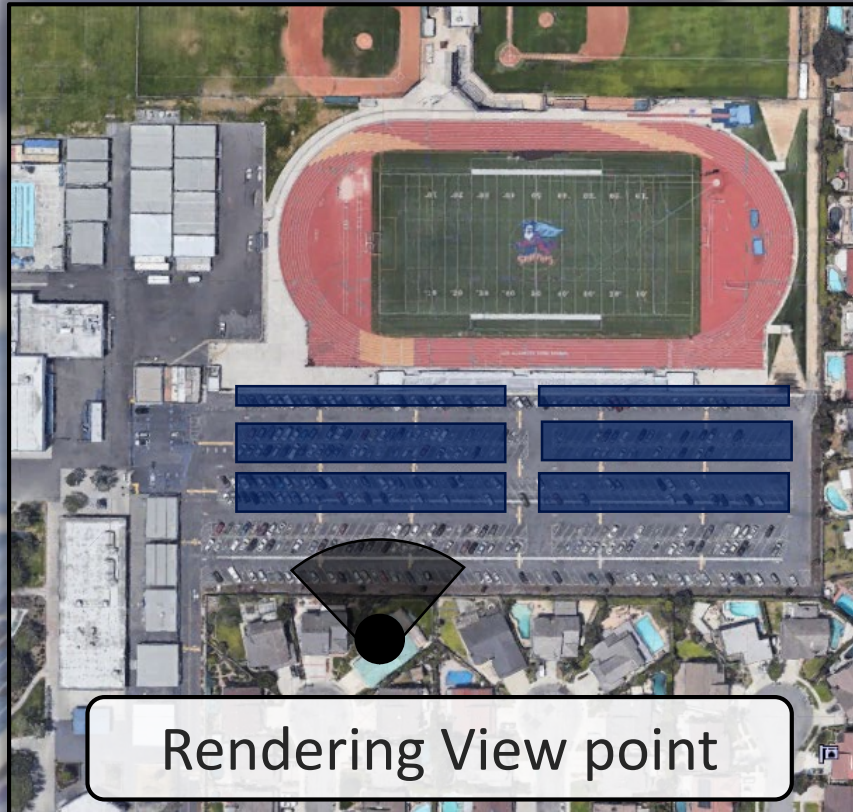
1/21	2/21	3/21	4/21	5/21	6/21	7/21	8/21	9/21	10/21	11/21	12/21	1/22	2/22	3/22	4/22	5/22	6/22	7/22
------	------	------	------	------	------	------	------	------	-------	-------	-------	------	------	------	------	------	------	------

Districtwide Solar Program

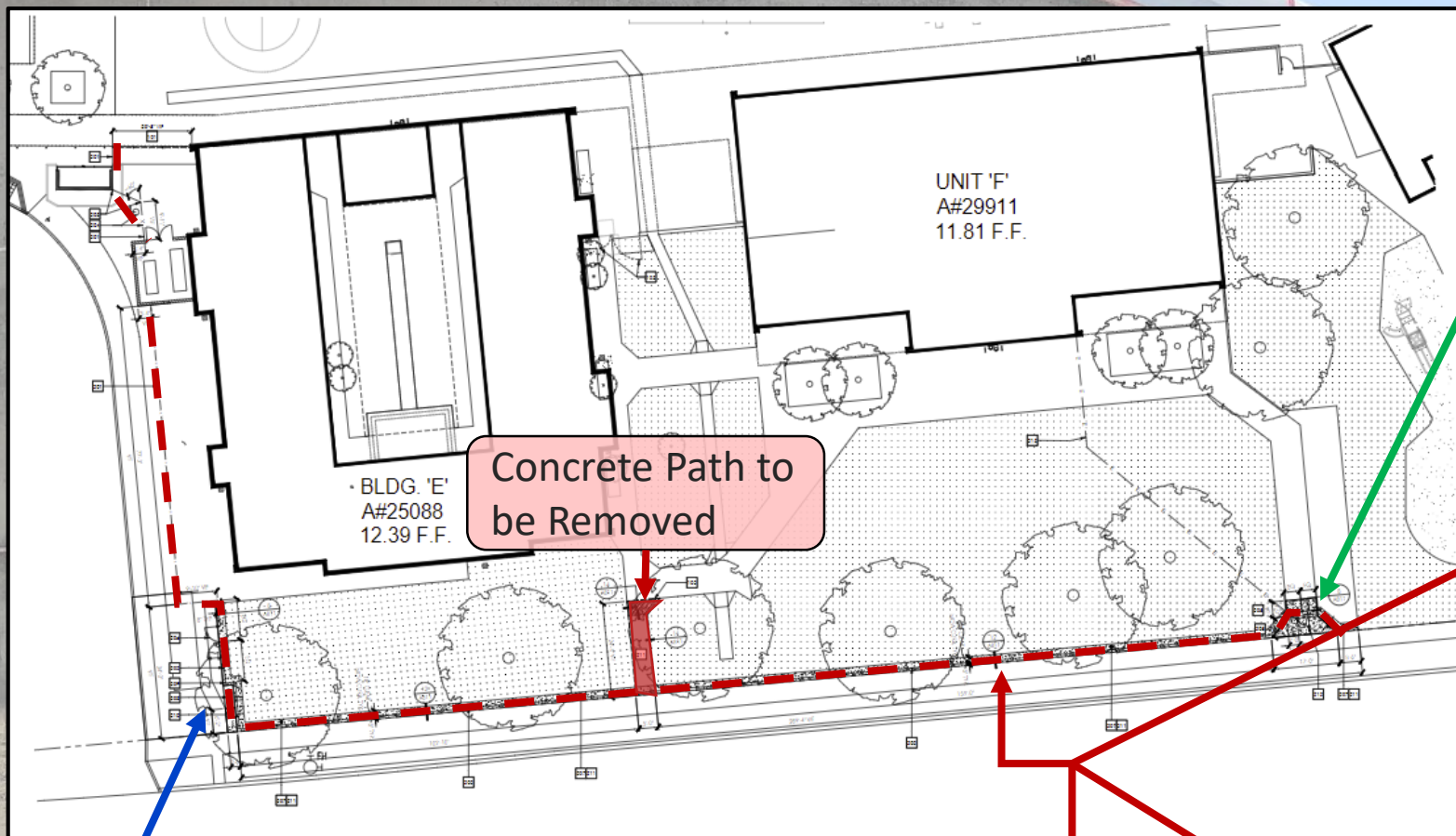
- All community outreach meetings have been held and video recordings with site maps are available on the District's website.
losal.org/departments/fmot/
- We are actively updating the website to include the latest information as it develops. In addition, the Solar Projects Community Feedback Form is still available online for the community to provide input.
- Once the site locations have become finalized by PFMG, they will be submitted as a Board Agenda Item for approval.
- Three sites being reviewed for potential location changes.
 - Los Alamitos Elementary
 - Oak Middle School
 - District Office



Districtwide Solar Program @ LAHS



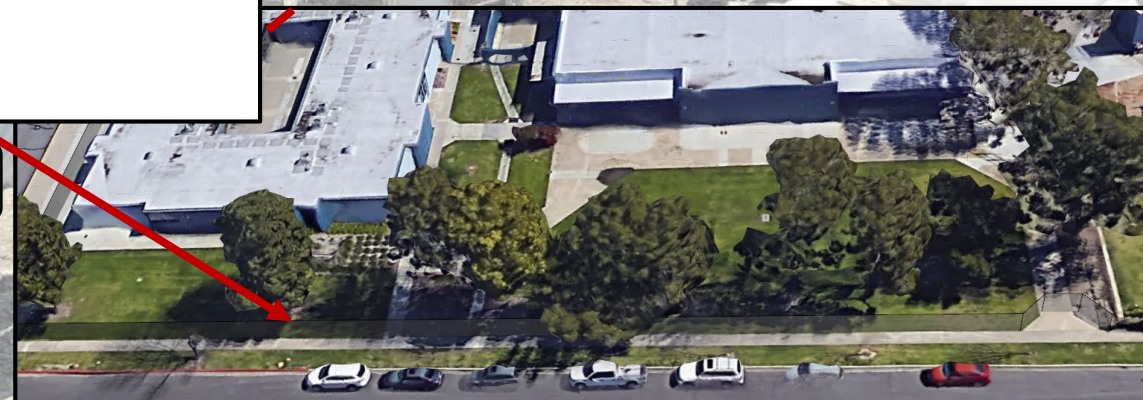
Hopkinson Elementary School Security Fencing



Vehicle Access Gate

Wrought-Iron Fencing to be Installed

Gate with Camera and Keypad Access Controls





Districtwide Playground Replacements

Playgrounds Completed:

McGaugh Elementary (3) Completed
Rossmoor Elementary School (3) Completed
Hopkinson Elementary School – (2) Completed
Lee Elementary School – (2) Completed
Weaver Elementary School – (2) Completed
Los Alamitos Elementary School – (1) Completed

Remaining Playgrounds:

Hopkinson Elementary School – (1) In Progress
Los Alamitos Elementary – (2) Summer 2021
Weaver Elementary School – (1) TBD
Lee Elementary School – (1) TBD

Hopkinson was selected as the next playground due to its smaller size, accessibility, and potential safety concerns.

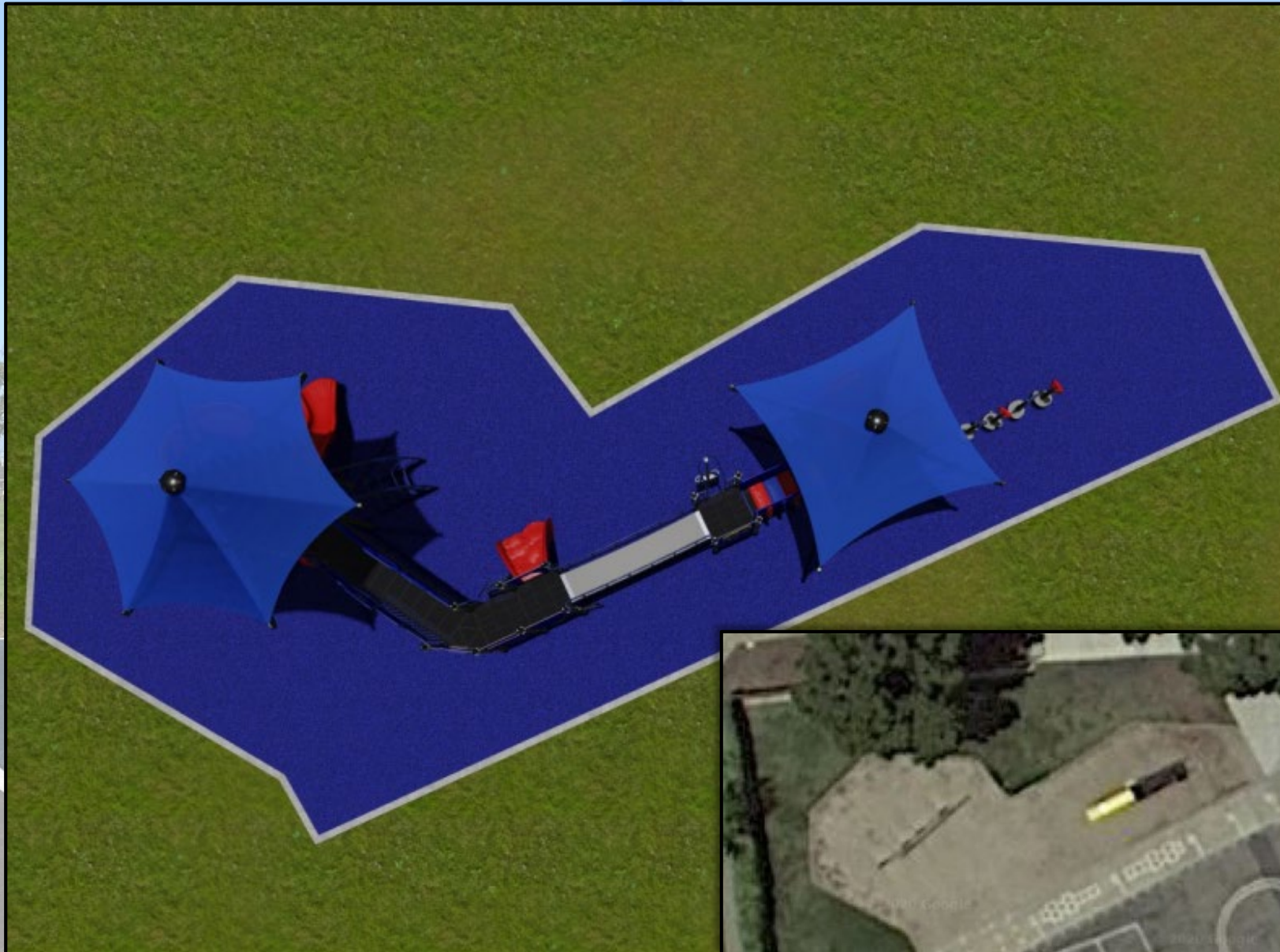
Hopkinson Elementary School Playground Replacement



Hopkinson Elementary School Playground Replacement



Hopkinson Elementary School Playground Replacement

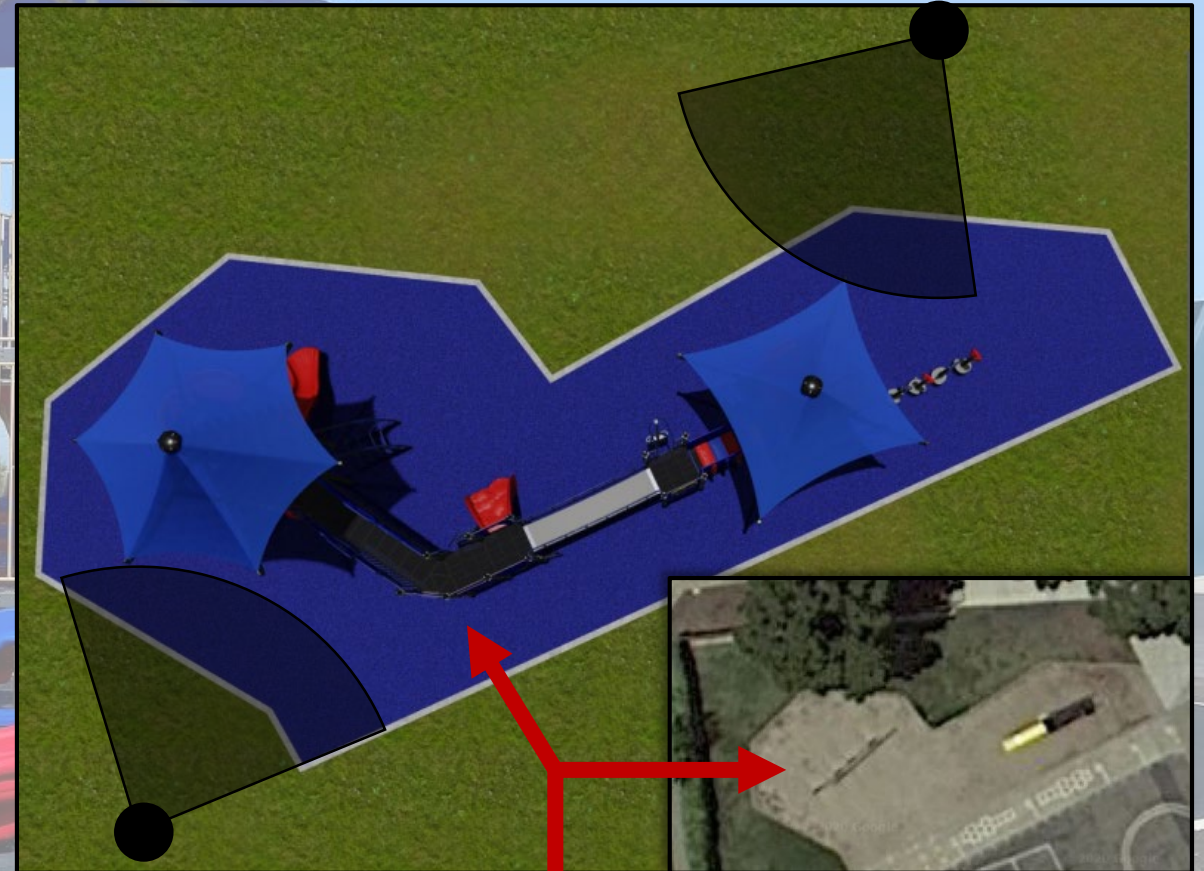


Viewpoint 1



Hopkinson Elementary School Playground Replacement

Viewpoint 1



Viewpoint 2



Viewpoint 2

Swings to be Replaced with Additional Play Structure

Los Alamitos Elementary School Playground Replacement

Scheduled for Summer 2021

Estimated Total Project Cost - \$600,000

Remaining Playgrounds:

Weaver Elementary School – (1)

Lee Elementary School – (1)



Los Alamitos High School Upcoming Projects

New Gymnasium

Currently drafting current cost estimates for (4) options of the Gymnasium.

3-court vs. 2-court

Competition vs. Practice

Campus Modernization

Cashflow

Performing Arts Center
Modernization

We are compiling a cost itemized menu of modernization options.

- Includes option to modernize the Performing Arts Center