



# Facility Advisory Committee: Recommendations

---

LAKE WASHINGTON SCHOOL DISTRICT

BOARD MEETING JANUARY 25, 2021

---

# Agenda

---

- ☐ Overview of Facility Advisory Committee (FAC) work and final recommendations
- ☐ Board Questions and Comments



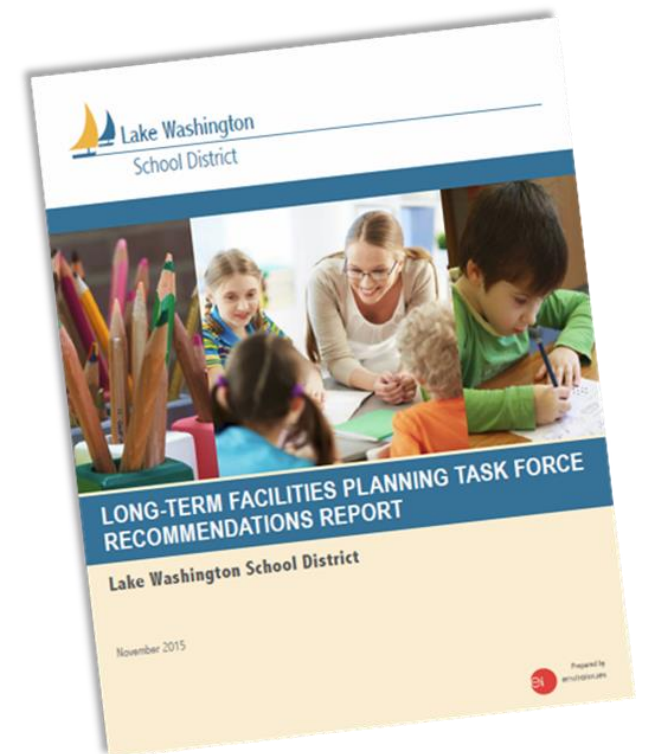
# Facility Advisory Committee Purpose

---

Facility Advisory Committee will make recommendations for future facility planning, informed by enrollment trends, community expectations and district programs.

The facility strategy will align with the District's strategic plan and make recommendations to accommodate our rapid enrollment growth and continue to provide quality learning environments.

The Superintendent and School Board will consider these recommendations as it plans for future ballot measures to fund construction.



# Background

---

- ❑ The Facility Advisory Committee (FAC) met from November 2019 – January 2021
- ❑ Main purposes of FAC to:
  - ➔ Learn about Lake Washington School District's work to date on long-term facilities planning, including the recommendations from the 2014/2015 Long-Term Facilities Task Force and the 2016 Bond Advisory Committee
  - ➔ Review current demographic information, student growth projections and capacities
  - ➔ Consider recommendations made by the Long-Term Facilities Task Force and the Bond Advisory Committee in the context of current information and recommend any needed revisions or updates
  - ➔ Provide recommendations on future facilities needs and financing options



# FAC Members

*Committee members represented parents, business, senior citizens, City government and District staff*

---



## Facilities Advisory Committee members:

- Julie Akhter
- Shayna Begun
- Tracy Boucher
- Nancy Brown
- Cindy Burt
- Roy Captain
- Kelley Cochran
- Martha Daman
- Patricia Elkoury
- Heather Frazier
- Will Gray
- Megan Hayton
- Jon Hedin
- Jessica Jackson
- Jayme Jonas
- Gregory Kovsky
- Diana Lafornera
- Tiffany Lansing
- Mindy Lincicome
- Kim Mendenhall
- Dan Montgomery
- Linda Murphy
- Mark Nelson
- Donneta Oremus
- Catherine Potter
- David Pyle
- Jonathan Russell
- Victor Scarpelli
- Janset Sey-Iskin
- Balendra Sutharshan
- John Towers
- An Tran
- Wei Zheng

## Facilities Advisory Committee technical team:

- Chris Brenengen
- Brian Buck
- Laura DeGooyer
- Shannon Parthemer
- Barbara Posthumus
- Jane Stavem, Superintendent (through June 2020)
- Dr. Jon Holmen, Superintendent, (July 2020 to present)
- Eric Laliberte, School Board member



# FAC Meetings Timeline

## Board/Community Engagement

---

### Board Update

- November 18, 2019 – Share FAC forming

### Committee Meetings

- November 20, 2019 – Orientation, Background and History
- December 19, 2019 – Enrollment and Capacity, Aging Facilities
- January 16, 2019 – Managing Growth/Enrollment Projections

### Community Engagement

- February 2020 - ThoughtExchange survey and feedback

### Committee Meetings

- February 27, 2020 – Workshop: What We Build
- April 2, 2020 – Funding Options
- April 16, 2020 – What We Build Part I – Project Costs
- April 30, 2020 – What We Build Part II – Project Table, Innovation

# FAC Meetings Timeline

## Board/Community Engagement

---

### Board Update

- May 4, 2020 – Shared FAC Work-to-date

### Committee Meetings

- May 21, 2020 – Refine Recommendations

### Board Update

- July 13, 2020 – Shared FAC Work-to-date, Draft Recommendations

### Community Engagement

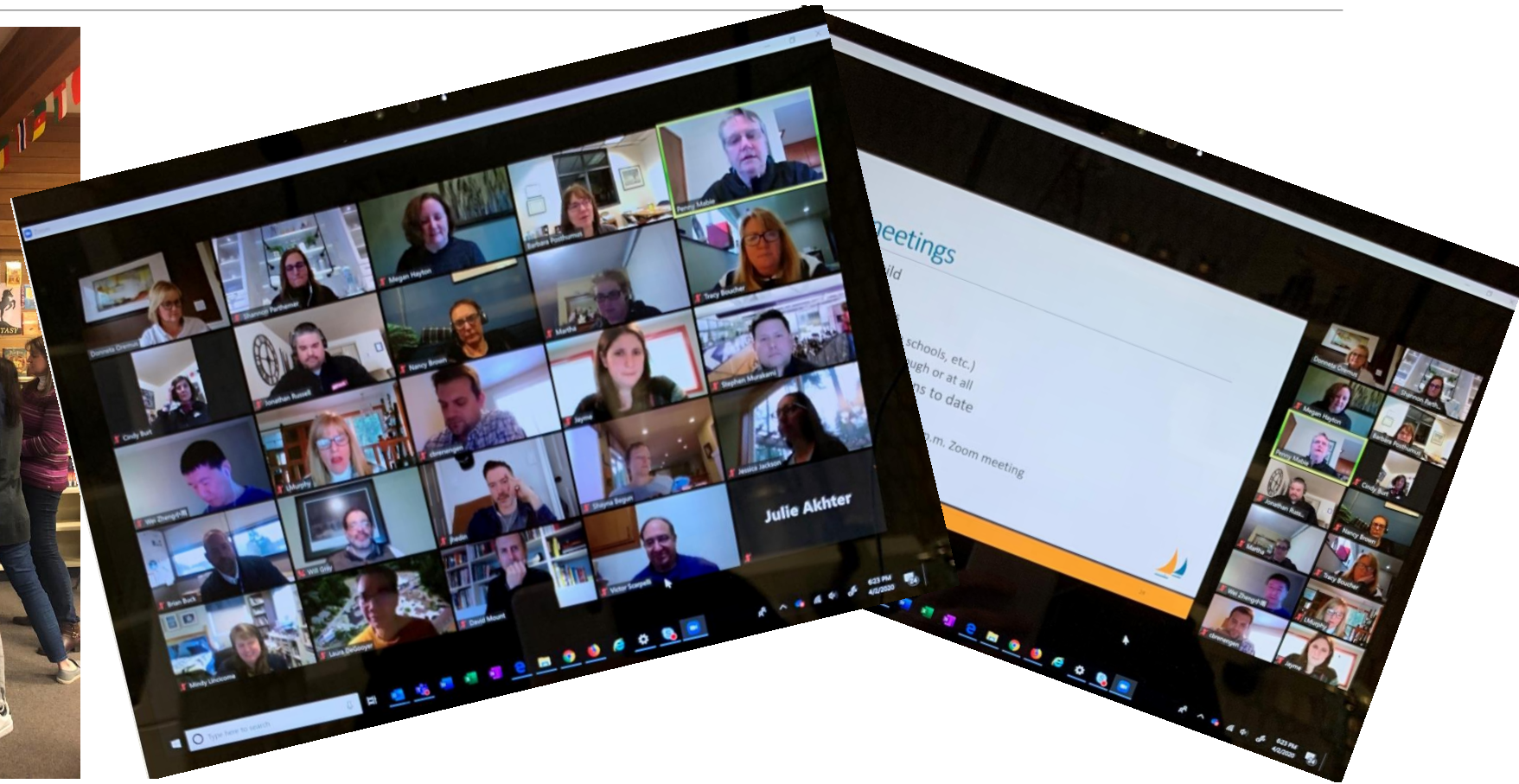
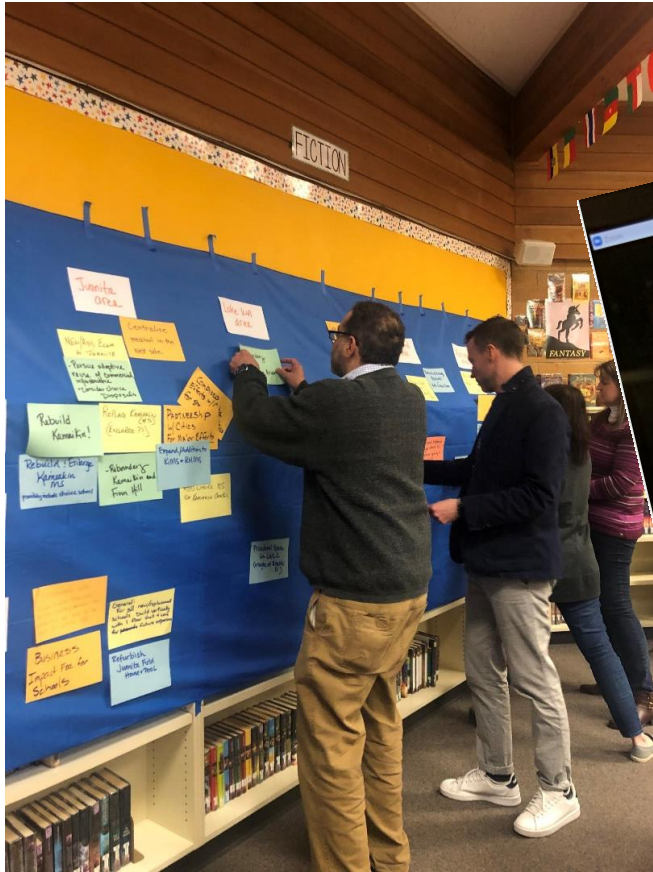
- October/November, 2020 – Online Open House – Feedback from the Community on Projects and Funding

### Committee Meetings

- Dec 3, 2020 – Review Community Input
- January 7, 2021 – Finalize Recommendations



# FAC Worked In-Person and Virtually





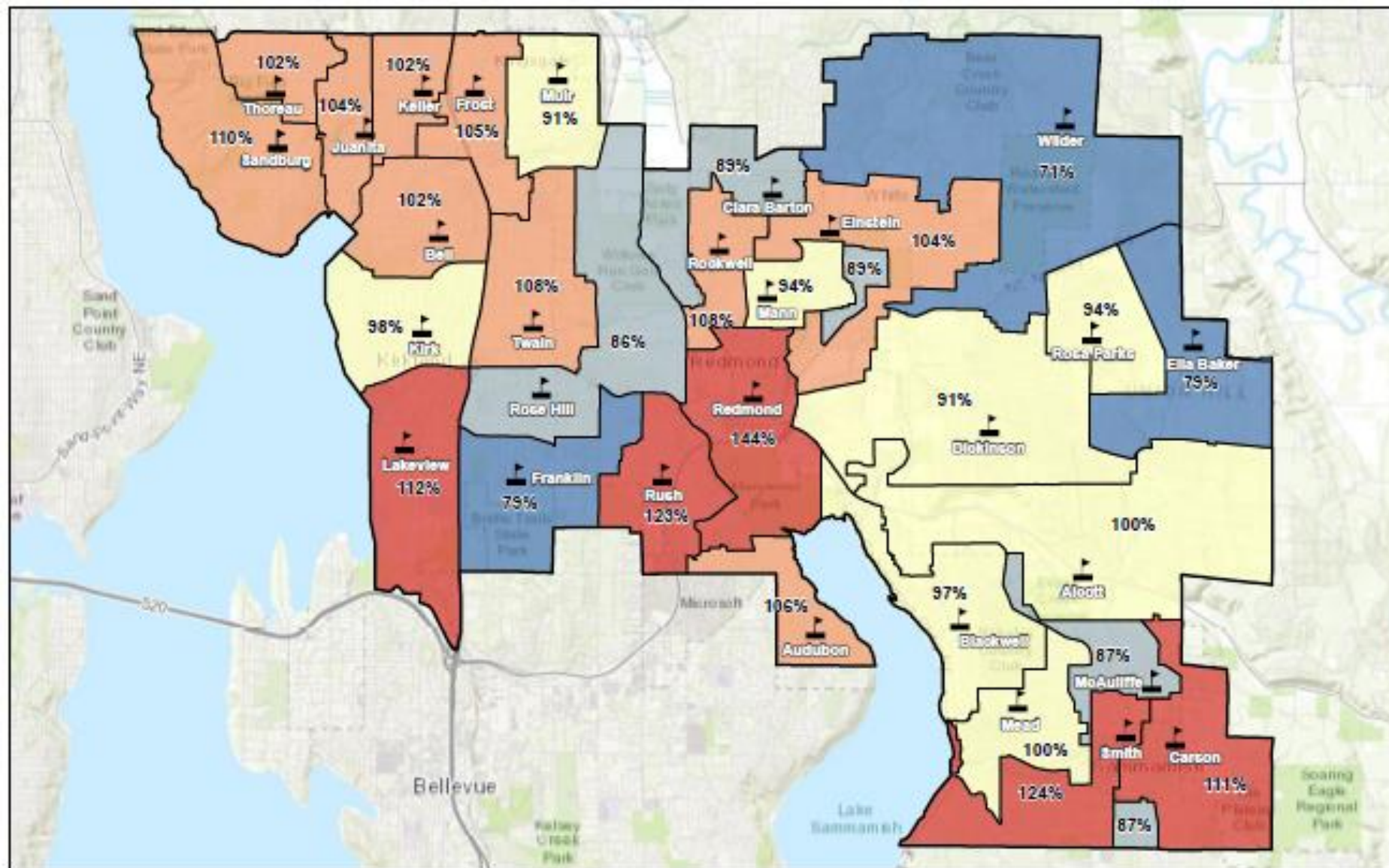
# FINDINGS AND RECOMMENDATIONS

---

# Key Findings

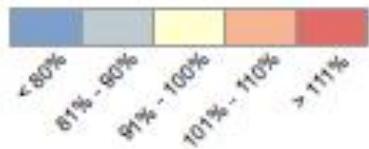
---

- ❑ The District has successfully implemented many recommendations from the 2014 Long-Term Facilities Task Force
- ❑ The District is facing continued and unprecedented growth resulting in current and future overcrowded schools
- ❑ Aging schools need remodeling or replacement
  - ➡ Do not meet current educational specifications
- ❑ Land availability for new schools is limited in the District
- ❑ COVID-19 has temporarily impacted enrollment and provided valuable lessons in flexibility and adaptation



23 out of 29 elementary schools will be at or over capacity in 10 years

2029 % Utilization of Total Capacity,  
Elementary Schools



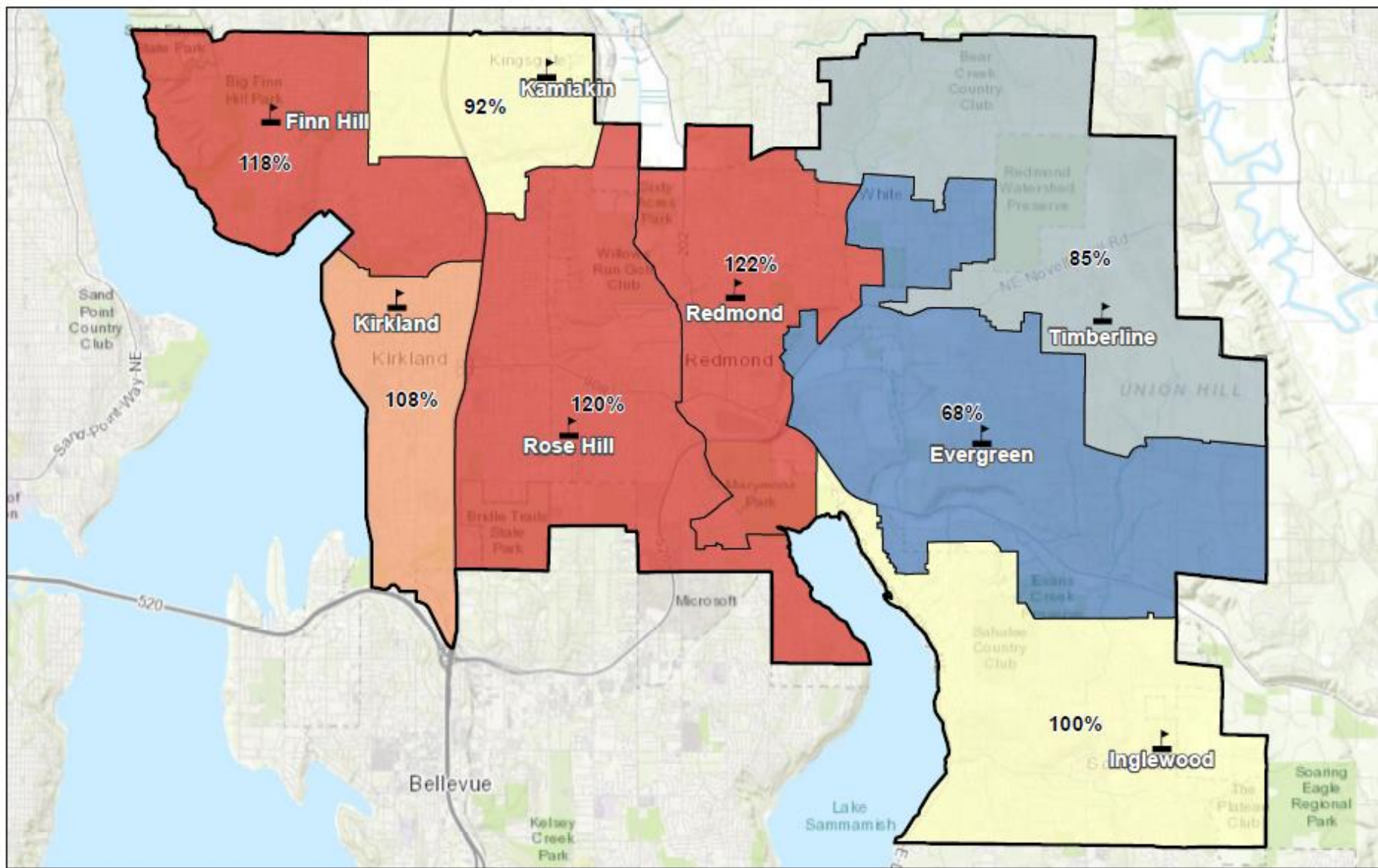
## Lake Washington School District Elementary School % Utilization of Total Capacity 2029\*

\*Includes portables



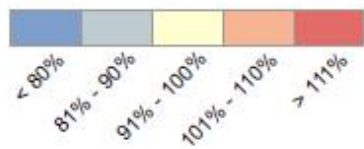
School District Boundary





6 out of 8 middle schools will be at or over capacity in 10 years

2029 % Utilization of Total Capacity, Middle Schools

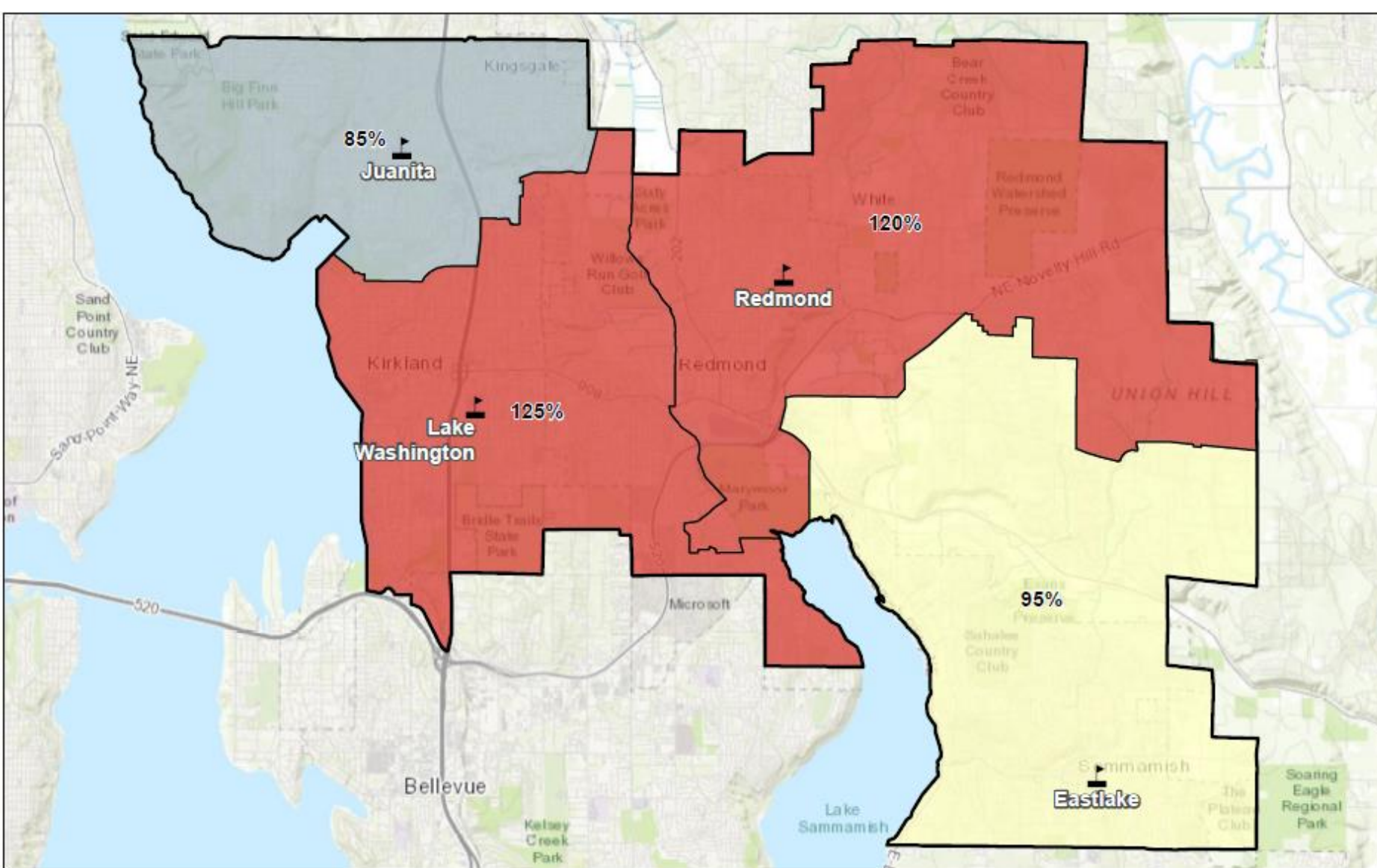


## Lake Washington School District Middle School % Utilization of Total Capacity 2029\*

\*Includes portables

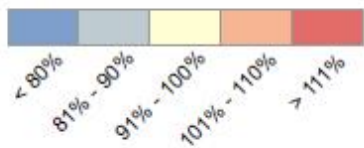
0 0.75 1.5 3 Miles

School District Boundary



3 out of 4 high schools  
will be at or over  
capacity in 10 years

2029 % Utilization of Total Capacity,  
High Schools



## Lake Washington School District High School

### % Utilization of Total Capacity 2029\*

\*Includes portables

0 0.75 1.5 3 Miles

□ School District Boundary

# Key Recommendations

---

- ☐ Prioritize building additional classroom capacity and addressing aging facilities
- ☐ Construct new buildings for larger capacity as needed and to equalize size of schools across district
- ☐ Maximize use of land at existing school sites
- ☐ Build with innovation in mind – consider urban school design
- ☐ Use an equity lens when designing and building facilities
- ☐ Educate and regularly inform community about capacity and aging facility status and needs and lack of available land





# Community Engagement

---

## ☐ Online Open House and Survey – October 19 – November 2, 2020

➔ Focused on two major areas:

➔ Projects and Funding

➔ More than 1,000 responses

Yes

No

# PROJECT RECOMMENDATIONS

---

# Community Engagement - Projects

---

## ❑ Project Recommendations

- ➡ What are your thoughts about the recommended projects? Anything to add/delete?
  - ➡ Overall support for recommended projects
  - ➡ Many comments in support of addressing aging schools such as Kamiakin and Alcott
  - ➡ Many comments in support of choice schools, others expressing concerns regarding choice schools
  - ➡ Some comments regarding another comprehensive high school
  - ➡ Concerns expressed regarding moving choice middles schools
- ➡ The committee made no major changes to project recommendations

No

## Project Recommendations

### High School & Middle School

	Juanita Learning Area	Lake Washington Learning Area	Redmond Learning Area	Eastlake Learning Area
Capacity Shortfall by 2029-30	0   0	506   506	429   641	0   0
High School	n/a	<b>Build</b> a new choice school	<ul style="list-style-type: none"> <li>- <b>Build</b> a choice school in either Redmond LC or Eastlake LC</li> <li>- <b>Build</b> an addition at Redmond HS</li> </ul>	<ul style="list-style-type: none"> <li>- <b>Build</b> a choice school in either Redmond LC or Eastlake LC</li> </ul>
Capacity Shortfall by 2029-30	55   202	224   473	100   274	0   6
Middle School	<ul style="list-style-type: none"> <li>- <b>Rebuild or expand</b> Kamiakin to 900 capacity</li> <li>- <b>Reboundary</b> to alleviate Finn Hill capacity <u>or</u></li> <li>- <b>Evaluate moving</b> Environmental MS to Kamiakin campus (or move Stella Schola)</li> </ul>	<ul style="list-style-type: none"> <li>- <b>Build</b> addition to bring Kirkland MS to at least 900 capacity</li> <li>- <b>Reboundary</b> Rose Hill MS and Kirkland MS</li> <li>- <b>Evaluate moving</b> Stella Schola from Rose Hill to Kamiakin campus (or move Environmental MS)</li> </ul>	<ul style="list-style-type: none"> <li>- <b>Reboundary</b> between middle schools</li> </ul>	<ul style="list-style-type: none"> <li>- <b>Rebuild or expand</b> Evergreen MS to at least 900</li> <li>- <b>Reboundary</b> to alleviate Inglewood MS capacity</li> </ul>

## Project Recommendations

### Elementary School & Other

	Juanita Learning Area	Lake Washington Learning Area	Redmond Learning Area	Eastlake Learning Area
<b>Capacity Shortfall by 2029-30</b>	75   397	47   668	0   762	85   959
<b>Elementary School</b>	<b>Move</b> existing preschools off elementary campuses to alleviate ES capacity	<ul style="list-style-type: none"> <li>- <b>Add</b> one new elementary school</li> <li>- <b>Reboundary</b> to alleviate ES capacity</li> </ul>	<ul style="list-style-type: none"> <li>- <b>Build</b> capacity on Redmond ES site</li> <li>- <b>Rebuild and expand</b> Rockwell ES</li> <li>- <b>Reboundary</b> to alleviate ES capacity</li> </ul>	<ul style="list-style-type: none"> <li>- <b>Rebuild and expand</b> Alcott ES and Smith ES</li> <li>- <b>Reboundary</b> to alleviate ES capacity</li> </ul>
<b>Other</b>	<ul style="list-style-type: none"> <li>- <b>Refurbish</b> Juanita field house and pool; partner with government or non-profit for athletic field use</li> <li>- <b>Build or acquire</b> space for preschools</li> </ul>	<b>Build or acquire</b> space for preschools	<b>Build or acquire</b> space for preschools	<b>Build or acquire</b> space for preschools

Capacity data from February 27, 2020 Flo Analytics Capacity and Space Needs - Capacity through 2029-30  
 Capacity Shortfall: Numbers represent shortfall with portables | Shortfall without portables  
 If area has capacity, shortfall is shown as zero.

# Updates Based on Community Feedback

---

- ❑ Added recommendation to incorporate learnings from COVID-19 experiences
- ❑ School sizes – refined recommendation to increase size (beyond standard) of new schools when needed and to seek consistency in size across district
- ❑ Consider urban schools for both innovation and to address lack of land for comprehensive schools



# Updates Based on Community Feedback

---

## Choice schools

- ➔ Educating community about choice schools; their purpose, flexibility regarding space needs
- ➔ Explore solutions to increase representation of currently underrepresented groups.
- ➔ Consider ways in which siting and design can help increase equitable access to choice programs

## Equity

- ➔ Future design and construction should consider ways to ensure equal access to facilities and programs

# FUNDING

---

# Community Engagement - Funding

## □ Funding

➡ What is your preference for options for funding the recommended projects?

➡ Committee Recommendation – pursue series of two bond measures

1. Please rank the options from 1 to 4, with 1 being the most preferred option.

Item	Overall Rank	Rank Distribution	Score	No. of Rankings
Two phases option – Two bonds, four years apart	1		1,690	509
All at once option – One bond	2		1,507	500
Three phases option – Three bonds, four years apart	3		1,247	486
No construction option – No bonds	4		611	464

Lowest Rank Highest Rank

# Community Engagement - Funding

---

## ☐ Criteria used to prioritize projects

Criteria	Percent Who Agree Very Important/ Somewhat Important
Prioritize projects that address both capacity and aging schools	96.2%
Spread projects across the District's learning areas and across levels	78.7%
Prioritize schools that have capacity issues and underdeveloped land	93.8%



# Funding Recommendations

---

- ☐ Use bonds for capital facilities
- ☐ Pursue a two-phase bond strategy for recommended projects
- ☐ Use capital levies as a fallback strategy if bond measure fails
- ☐ Continue to advocate to the state legislature for 50% approval threshold for school bond measures



# Funding Recommendation - Projects by Phase

	Projects by Phase	
	Phase 1	Phase 2
<b>High School</b>	-Build Choice HS in Redmond or Eastlake Learning Area	-Addition at Redmond HS + core expansion -Build Choice HS in Lake Washington Learning Area
<b>Middle School</b>	-Rebuild or Expand Kamiakin MS	-Rebuild or Expand Evergreen MS -Addition at Kirkland MS + core expansion
<b>Elementary School</b>	-Rebuild and Expand Alcott ES -Build New ES in Lake Washington Learning Area -Addition to existing Redmond ES or new Redmond Learning Area ES	- Rebuild and Expand Smith ES - Rebuild and Expand Rockwell ES
<b>Other</b>	-Refurbish Juanita Field House and Pool	-Early learning centers in Juanita and Lake Washington Learning Areas



# Next Steps

---

- ❑ Final recommendations posted on district website
- ❑ Board action on recommendations – February 8, 2021

