

COMMUNITY DESIGN TEAM

RECOMMENDATION

LONG RANGE FACILITY PLANNING 2019
STILLWATER AREA PUBLIC SCHOOLS



PRESENTERS:

MICHAEL KAUL

TED WEGLEITNER

ANITA FOJTIK-CRAGGS

AVA ROOTS

DAN O'CONNOR



AGENDA

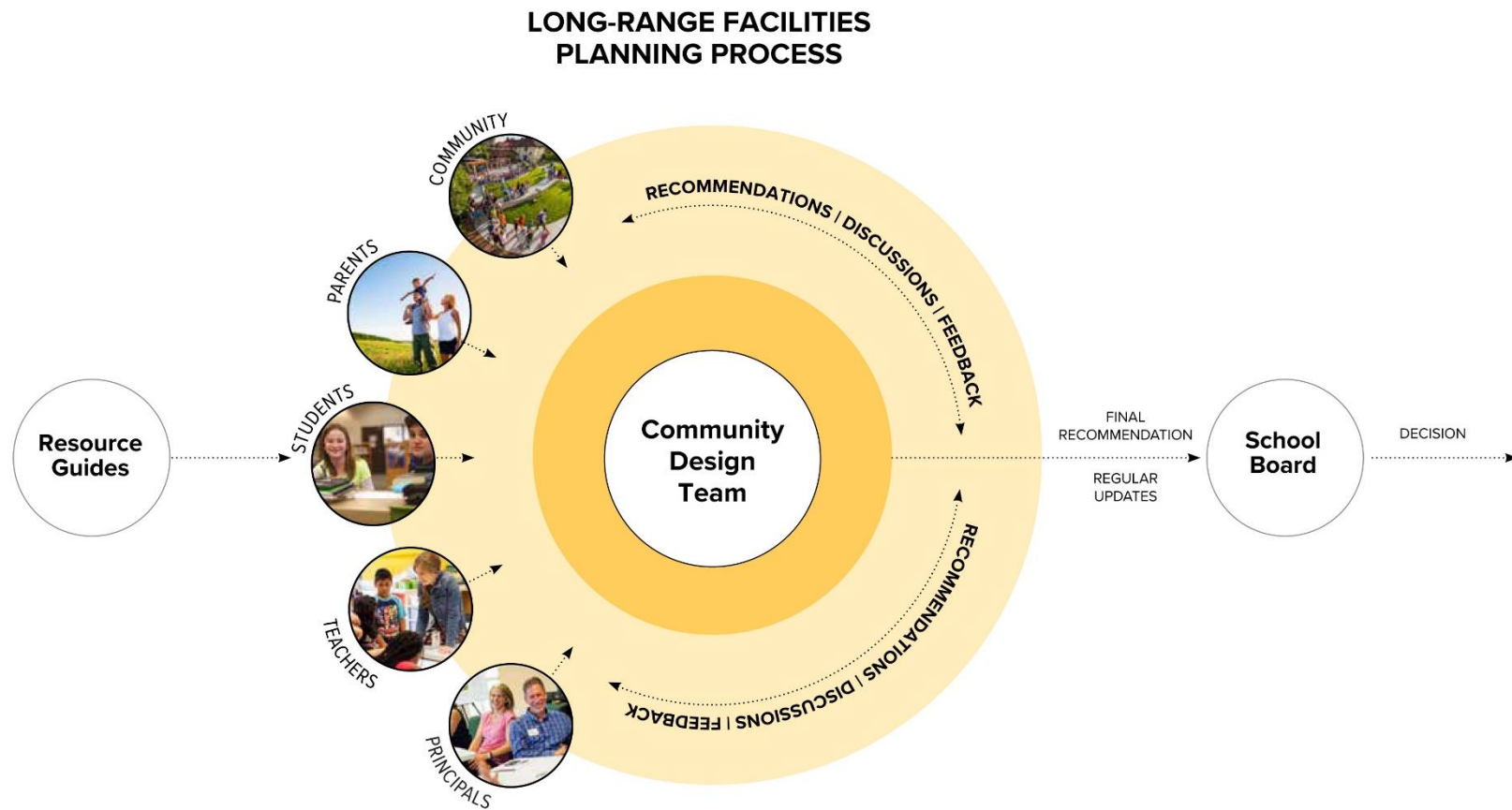
- Highest Hopes
- Vision For The Future
- Fair and Inclusive Process
- Data is Clear
- Recommendations For Action
And Priorities

WHAT IS A MASTER PLAN?

- 10-15 year road map for the future
- Grounded on your vision for learning
- Living/breathing document
- Physically & fiscally responsible
- Allows logical implementation over time

**“THE BEST WAY
TO PREDICT
THE FUTURE
IS TO
DESIGN IT”
—BUCKMINSTER
FULLER**

HOW ARE DECISIONS MADE?



FAIR AND INCLUSIVE PROCESS

- **65** people:
 - Parents, Students, Teachers, Principals, Community Leaders, Business Leaders
 - Diversity: geographic, ethnic, economic, age, gender
- **7** meetings + **3** evenings of tours
- **1,500** hours of community time invested
- Invited input from **all participants**
- **Proven process**, led by the School Board's selected consultants
- **Driven by consensus (Common Ground)**

FORCES OF CHANGE

- **Demographic changes**
 - School day and hours
- **Competition and choices**
 - On-line, non-classroom learning
 - Student involvement / activism
 - Political shifts
 - Work force – industry – automation
 - How we communicate
- **Funding challenges**
 - Security
 - Problem-based learning
 - Teacher shortage/ Teacher training
- Environment / Climate Change
- Individual Educational Plans
- Uncertainty
- **Cultural evolution (diversity)**
 - The cost of higher education
 - Gender roles (women on the rise)
- **Mental health/Well being**
 - Access to information
 - Modes of transportation
- **Technology**
 - Global communication (but connections are more superficial)

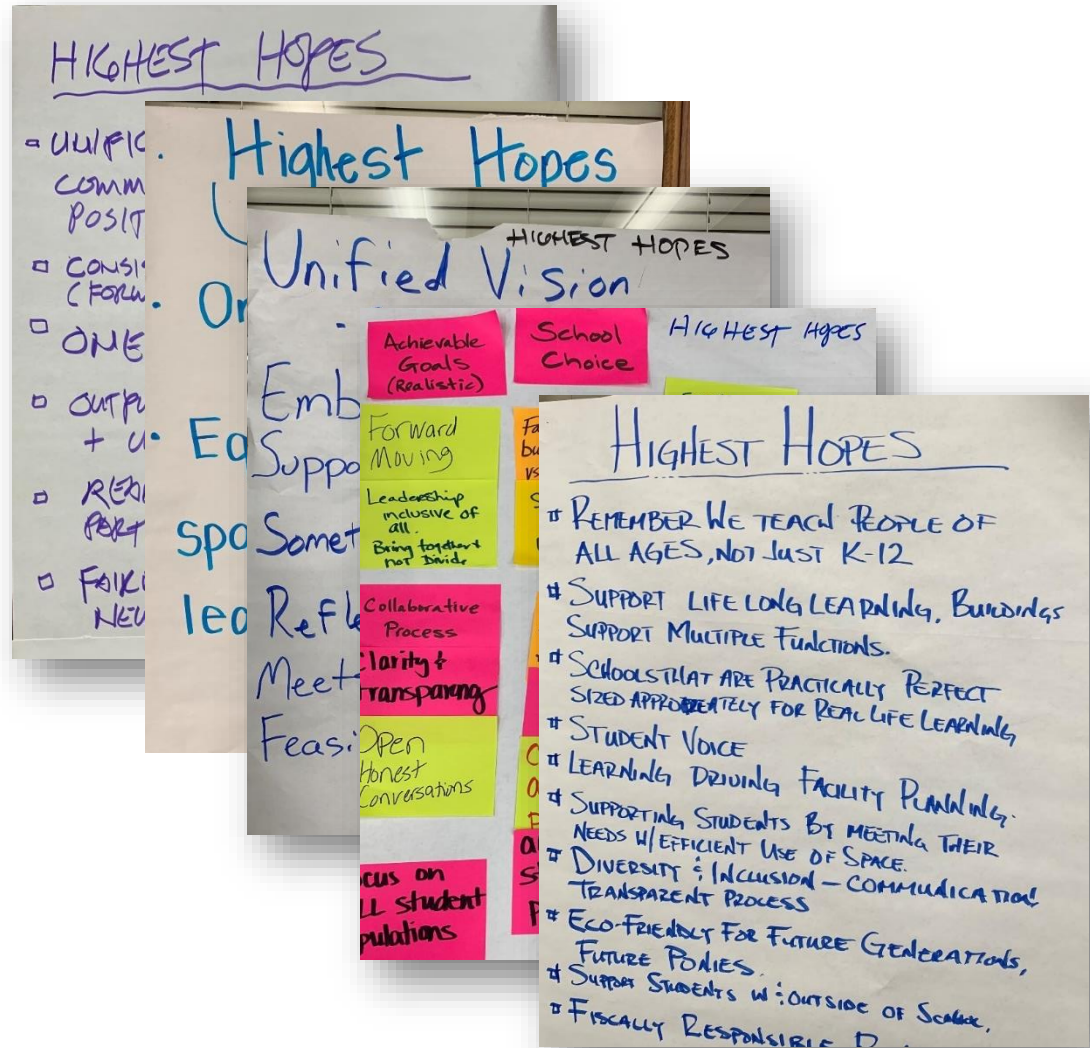
LIMITING BELIEFS

- **Has to be perfect**
- School should be the way it was for me.
- **Fear**
- Federal directives – no control/someone else's fault
- Diverse opinions/perspectives not needed
- Everybody wants something different
- Adults problem
- **Don't have enough money**
- We've always done it this way.
- 7:30 – 3:30 | Monday – Friday schedule
- Learning is limited to a box
- **All talk!**
- Standardized tests
- Test scores focus
- **Community attitudes range → no common ground**
- Too busy!
- We are the best; no need to change

**SHARED
VISION**

HIGHEST HOPES

- Unifying Vision
- Collaborative
- Data-Driven
- Embraces Equity
- Forward-Looking
- Fiscally Responsible





MENTAL HEALTH RESOURCES
 THOUGHTFUL OF STUDENTS w/ LEARNING
 DISABILITIES
 QUIETNESS/QUIET SPACE
 INCLUSIVE NOW: FUTURE NEEDS
 EMBRACE & CULTIVATE DIVERSITY



SUSTAINABLE
 COMMUNITY
 EQUITABLE MAY HAVE
 DIFF. DEFINITIONS.
 DIFFERENT LENS.
 FINANCIAL SUSTAINABLE
 DIVERSITY
 INCLUDES OUT.
 STAFF SUPPORTIVE/SUPPORTED.
 Engaging to most
 All Ages
 Technology
 Student Focus
 Collaborative
 Efficient
 Innovation

We See

Flexibility

Right spaces and class

Building Learners

Technical opportunities

Economic

Educational

Students all

Critical

We See

- a collaborative learning and a high

- a future learning

- accessible spaces for

- see

- facilities encourage

- in environment for the

We See...

- Diversity

- Everyone

- Flexibility

- Enthusiasm

- Sense of Outside.

- Students for

- a sense of

- pay what (teachers/staff

- Skills for

TABLE 7

WE SEE.

→ ENVIRONMENT

→ MULTIMEDIA RANGE OF LABS, TECH,

→ COMMON SPACE COMMUNITY WITH LOCAL BUSINESS

→ FLEXIBLE SPACE ENCOURGE INTER WITH FURNITURE

→ AREAS DESIGN WITH SOCIAL

→ NATURAL LIGHT CONNECTION TO

→ LANDSCAPE DESIGN OF OUTDOOR

→ WELL-TRAINED ABOUT ADVANCING

→ HAPPY ACTIVE,

-life

We see Staff who are Committed and passionate to tailor learning to each student.

We see collaboration and flexibility throughout classroom settings and learning environments

We see spaces with natural light that are open with room for growth.

We see open and engaging collaborative spaces for the community.

We see independent learning tailored to each student with spaces and technology to support it.

More outdoor spaces (outdoor learning spaces, etc.)

A series of small

Flexibility in student schedules to 100 M

Diverse

Intentionally different

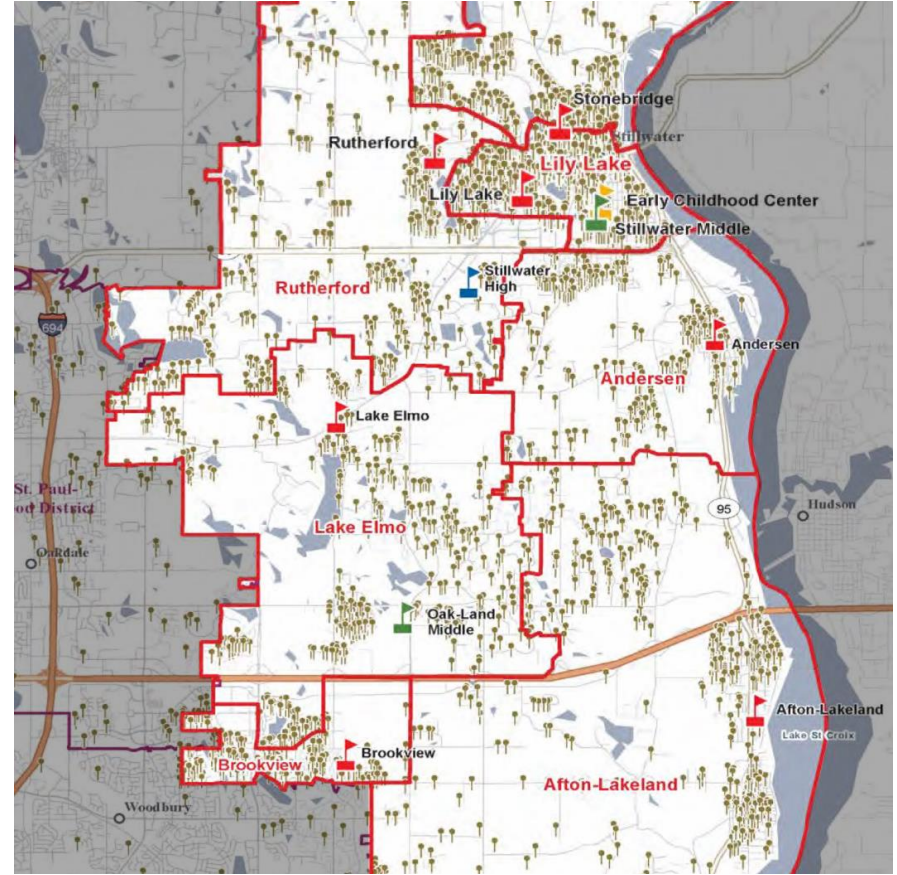
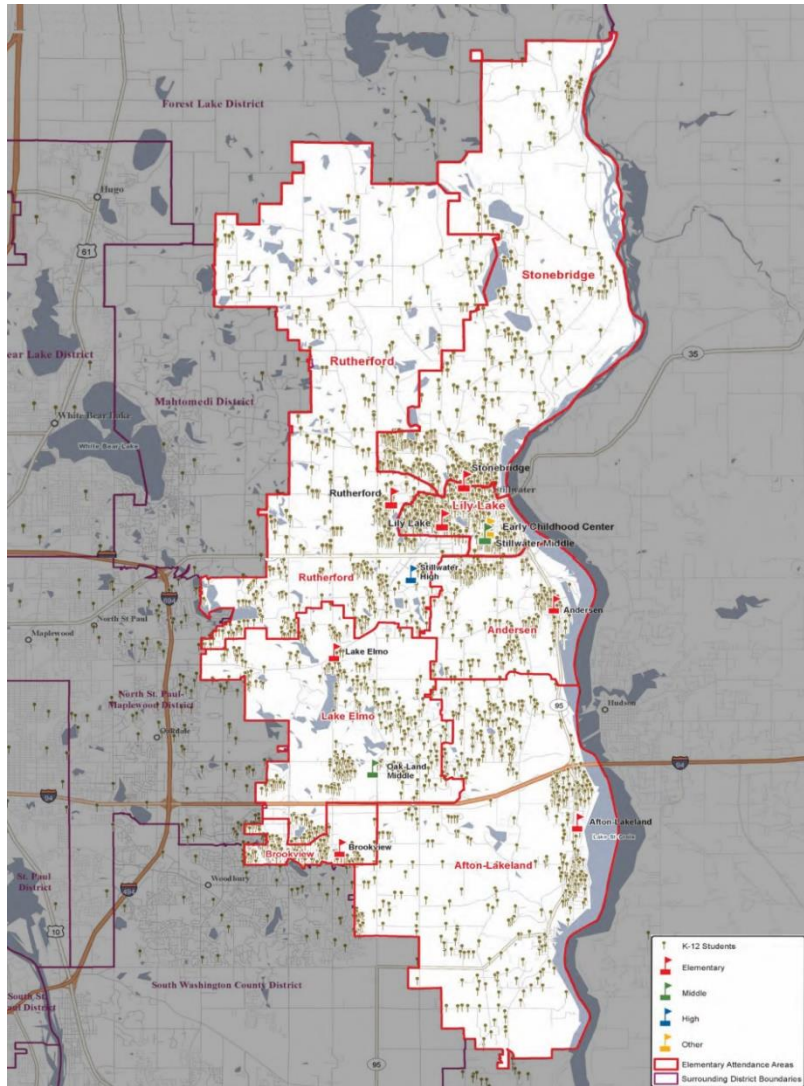
More emphasis on trade school "entrepreneurial" programs

SHARED VISION STATEMENT

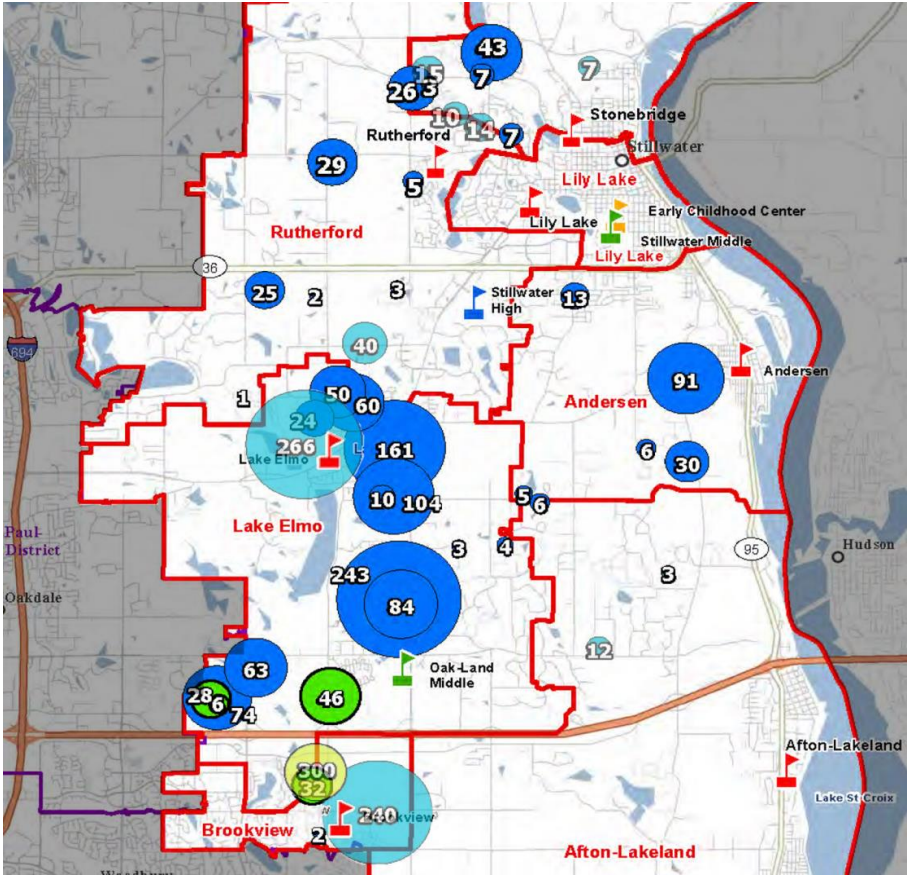
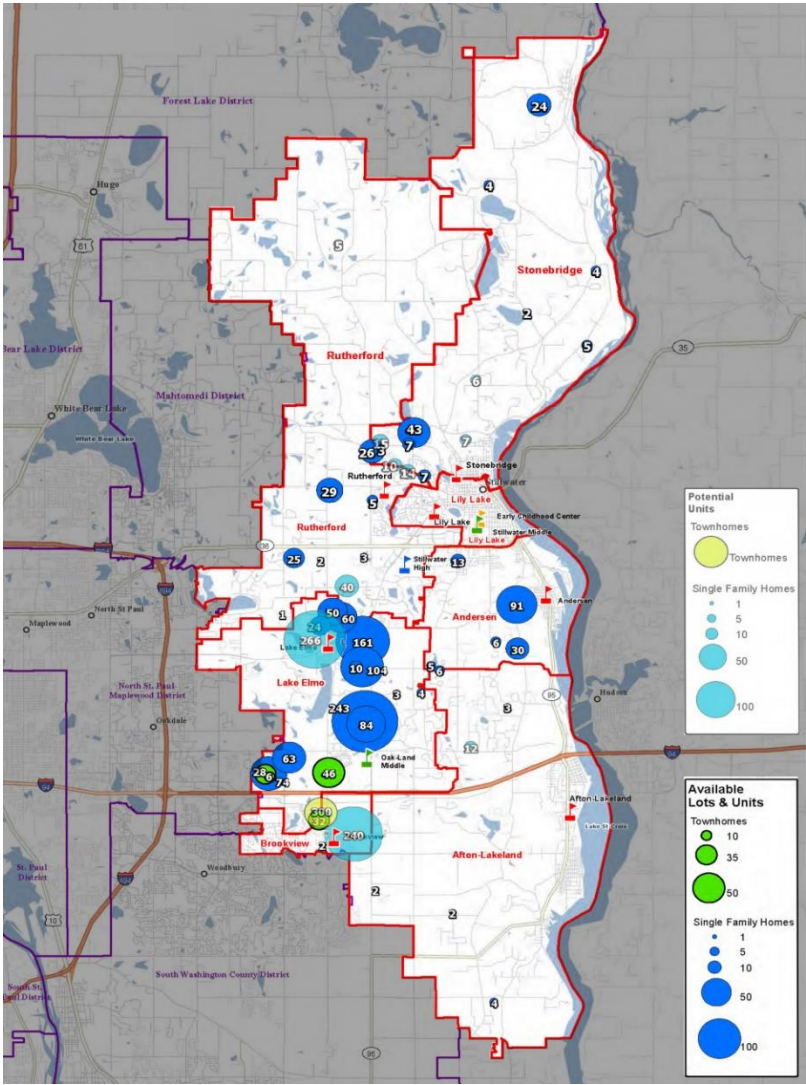
Enhance the dreams and aspirations of our students, teachers and community in building an innovative, diverse, inclusive, flexible, accessible, collaborative, engaged and sustainable future for all.

DATA IS CLEAR

WHERE THE STUDENTS ARE



WHERE THE GROWTH IS



ENROLLMENT DATA

	2019	2023/24		
Attendance Area / Program	Current Enrollment	Projected Enrollment	Planning Capacity	
Afton-Lakeland Elementary	479	486	500	
Andersen Elementary	364	376	325	
Brookview Elementary	480	630	450	
Lake Elmo Elementary	697	900	660	250 +/- Dual Immersion
Lily Lake Elementary	477	485	535	
Rutherford Elementary	567	567	560	
Stonebridge Elementary	433	475	560	
Oak-Land Middle School	973	1125	990	
Stillwater Middle School	1024 + 55	1011 +51	1303	MS + GATE
Stillwater Area High School	2755 + 76	2899 + 60	2756	HS + ALC
Early Childhood/Family Center		180	180	
Oak Park Building – Admin/T+	56	56	400/500	With / Without Transitions+
Withrow Building	vacant	--	250	
Central Services	56 staff	56 staff	na	

GAP ANALYSIS REPORT

[illegible]

RECOMMENDATIONS FOR ACTION

Priority-Setting Exercise

As a table, please rate the priority of each line-item by assigning one of the values:

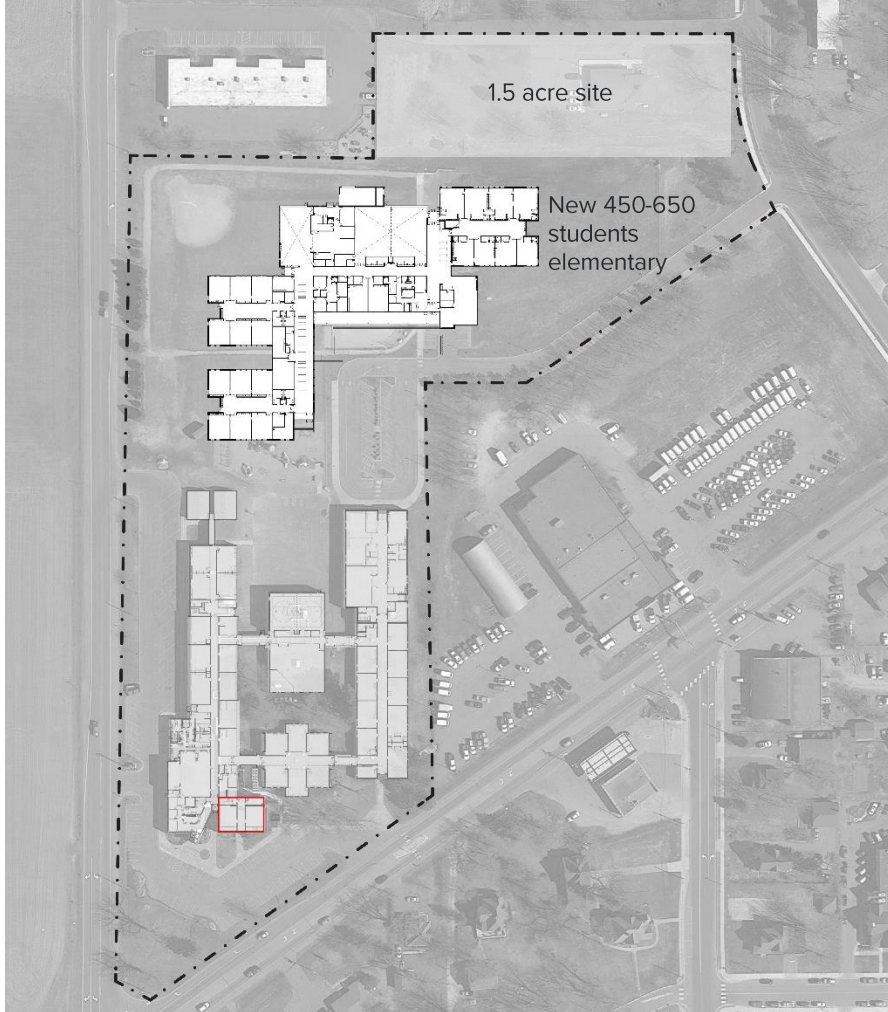
- 5 – Highest priority
- 3 – Medium priority
- 1 – Lowest priority

Building	Improvement	Cost (Million)	5	3	1	TOTAL
Stillwater High School	Auditorium Addition: Expand existing – 8.5 M Addition – 17.7 M Flex and Admin upgrades	\$8.5 \$17.7 \$4.5				
Oakland Middle School	Gym Addition Daylight and Sound upgrades Flex/Media Center + Music Wing Addition Southern ECFC 30,000 SF	\$6.50 \$1.67 \$6.37 \$17.00				
Stillwater Middle School	Library Remodel Daylight and Sound upgrades Flex/Media Central "Heart"	\$2.24 \$3.30 \$3.10				
Oak Park Building	As multi-purpose center: ALC Remodel Transition Program Remodel Admin Remodel As Elementary: PH1: 450 Students Elemenrtary PH2: Expand Classrooms + GYM	\$2.76 \$2.80 \$6.79 \$5.29 \$10.72				
Lily Lake Elementary	Open Classroom Remodel Bathroom Remodel Upgrade of Media Center Cafeteria Remodel+New Music Room Special Ed Upgrade New Flex Space	\$2.10 \$0.20 \$1.10 \$2.50 \$0.90 \$2.00				
Afton Lakeland Elementary	Gym addition Flex space Media Center Upgrade	\$4.10 \$0.90 \$1.00				
Andersen Elementary	Upgrade of Media Center	\$1.10				
Rutherford Elementary	Upgrade of Media Center	\$1.30				
Stonebridge Elementary	Cluster Upgrades Media Center and 3-Grade Upgrade Open Classroom Upgrades	\$0.42 \$2.50 \$5.50				
Brookview Elementary	Expand to 630 students	\$6.2				
Lake Elmo	450-650 Building on existing site 450-650 Building on new site Obtain additional land	40.2-49.1 43.5-52.4 included				
Central Services	Sell Build Addition for Transition Program	\$0.0 \$7.7				
Withrow	Sell	\$0.0				

Priority-Setting:

Lake Elmo	
Rebuild as two 450-650 schools	
Brookview Elementary	
Expand to 630 students	
Oak Park Building	
As multi-purpose center (ALC, TP, CS):	
Stonebridge Elementary	
Cluster Upgrades	
Media Center and Open Classroom Upgrades	
Central Services	
Sell	
Withrow	
Sell	
Oak-Land Middle School	
Gym&Music Wing Additon Flex/Media Center	
Daylight and Sound upgrades	
Lily Lake Elementary	
Bathroom and SpecialEd Remodel	
New Flex Space	
Open Classroom Remodel	
Stillwater High School	
Auditorium Addition	
Flex and Admin upgrades	
Southern ECFC	
30,000 SF at Oak Land or other site	
Afton Lakeland Elementary	
Flex space	
Gym addition and Media Center Upgrade	
Andersen Elementary	
Upgrade of Media Center	
Stillwater Middle School	
Flex/Media Central "Heart"	
Library Remodel, Daylight & Sound Upgrades	
Rutherford Elementary	
Upgrade of Media Center	

Lake Elmo Elementary Replacement:



- Replace at two sites (existing Lake Elmo and a new site), each expandable from 450 to 650 students
- Obtain additional land to north of existing Lake Elmo
- Use current building during construction

HIGHEST PRIORITY, DO IT AS SOON AS POSSIBLE

Brookview Elementary:

New Capacity: 650



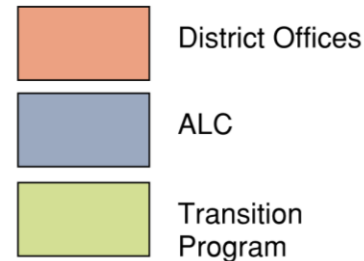
- Expand to 650 (8 classrooms)
- Do it as soon as possible

**HIGHEST PRIORITY, DO IT AS
SOON AS POSSIBLE
USE LEVY IN 2021 IF POSSIBLE**

Oak Park Building:



- Utilize Oak Park School for:
 - Transition Program,
 - ALC
 - Central Services
- Do not re-open as an elementary



HIGH PRIORITY

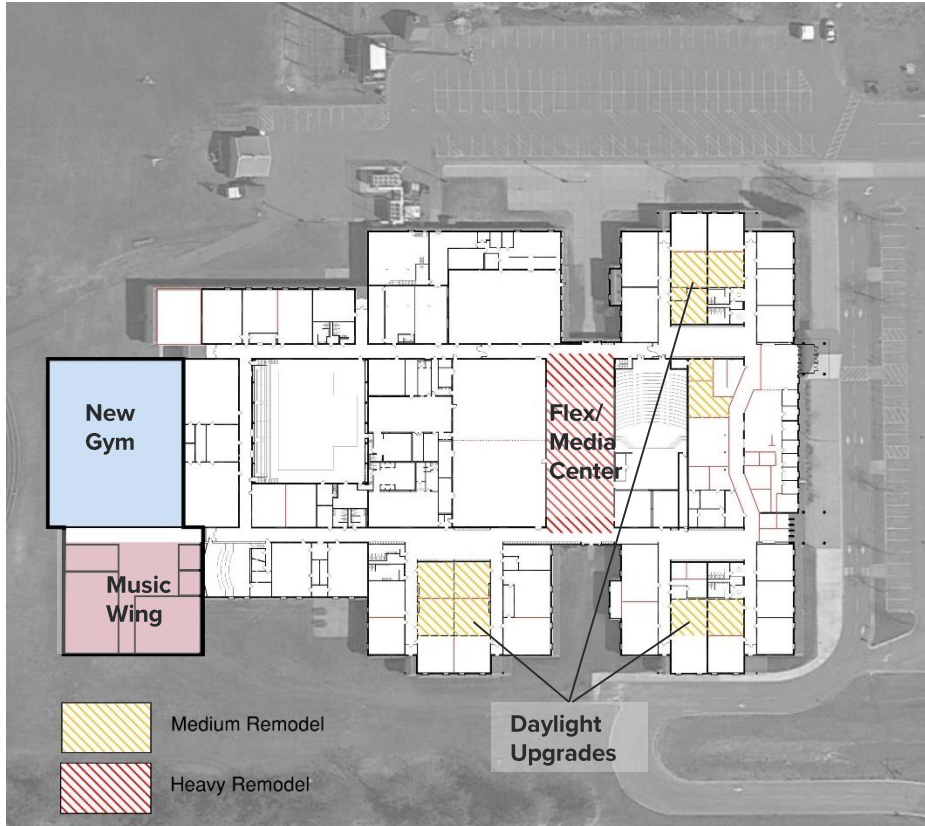
Stonebridge Elementary:



- **Special Education Cluster Upgrades**
- **Media Center and 3-Grade Upgrade, Daylighting**
- **Open Classroom Upgrade into Next Century Learning Environment**

HIGH PRIORITY

Oak-Land Middle School:



- Music and Gym Additions
- Daylight upgrades

MEDIUM PRIORITY

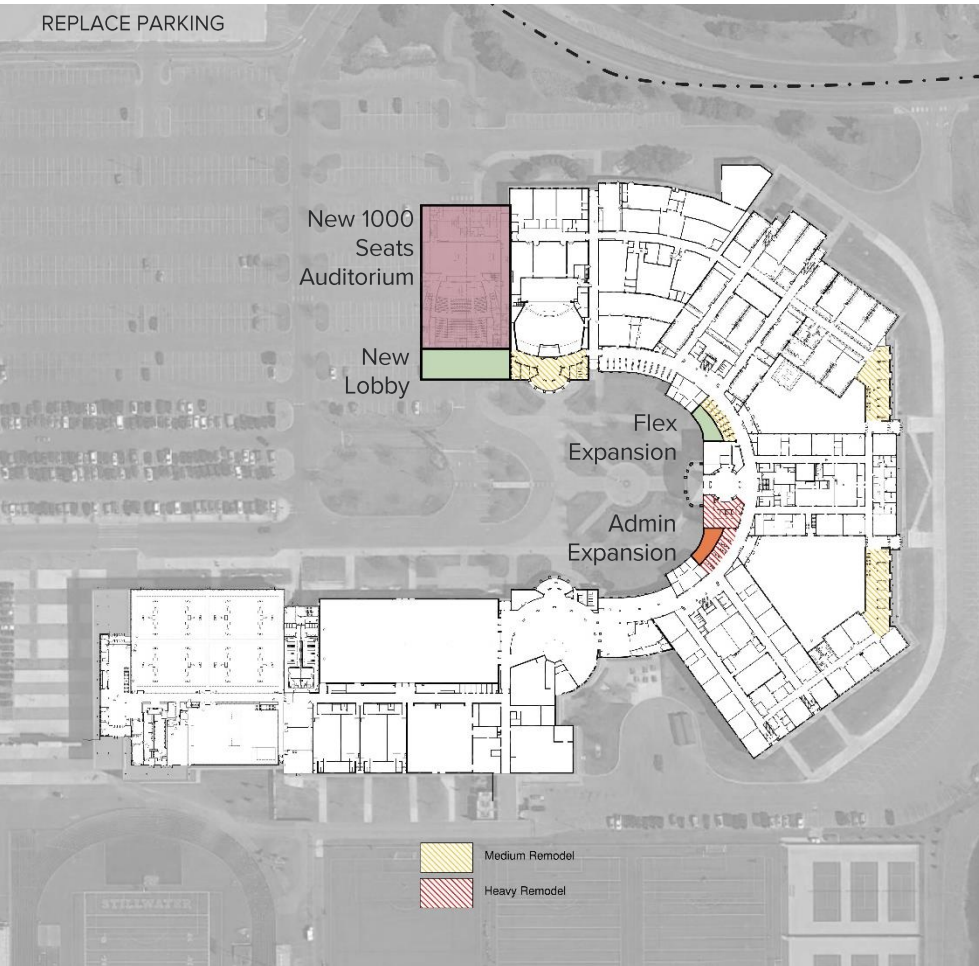
Lily Lake Elementary:



- Bathroom Remodel, Special Ed Upgrades, New Flex Space
- Open Classroom Remodel, Cafeteria Remodel, New Music Room
- Media Center Upgrade

MEDIUM – LOW PRIORITY

Stillwater Area High School:



- **1000 Seat Auditorium Addition**
- **Administration, Entry Space and Security Upgrades.**
- **Flex Spaces throughout**

MEDIUM PRIORITY

Southern Early Childhood Family Center



- **Provide Early Childhood programs at:**
 - **Oak-Land Site or New Site**
 - **Accommodate at Elementary Schools**

MEDIUM PRIORITY

Afton-Lakeland Elementary:



- Gym addition
- Extra space (Flex)
- Media Center Upgrade

MEDIUM PRIORITY

Andersen Elementary:



- Update of Media Center
- Manage as two sections

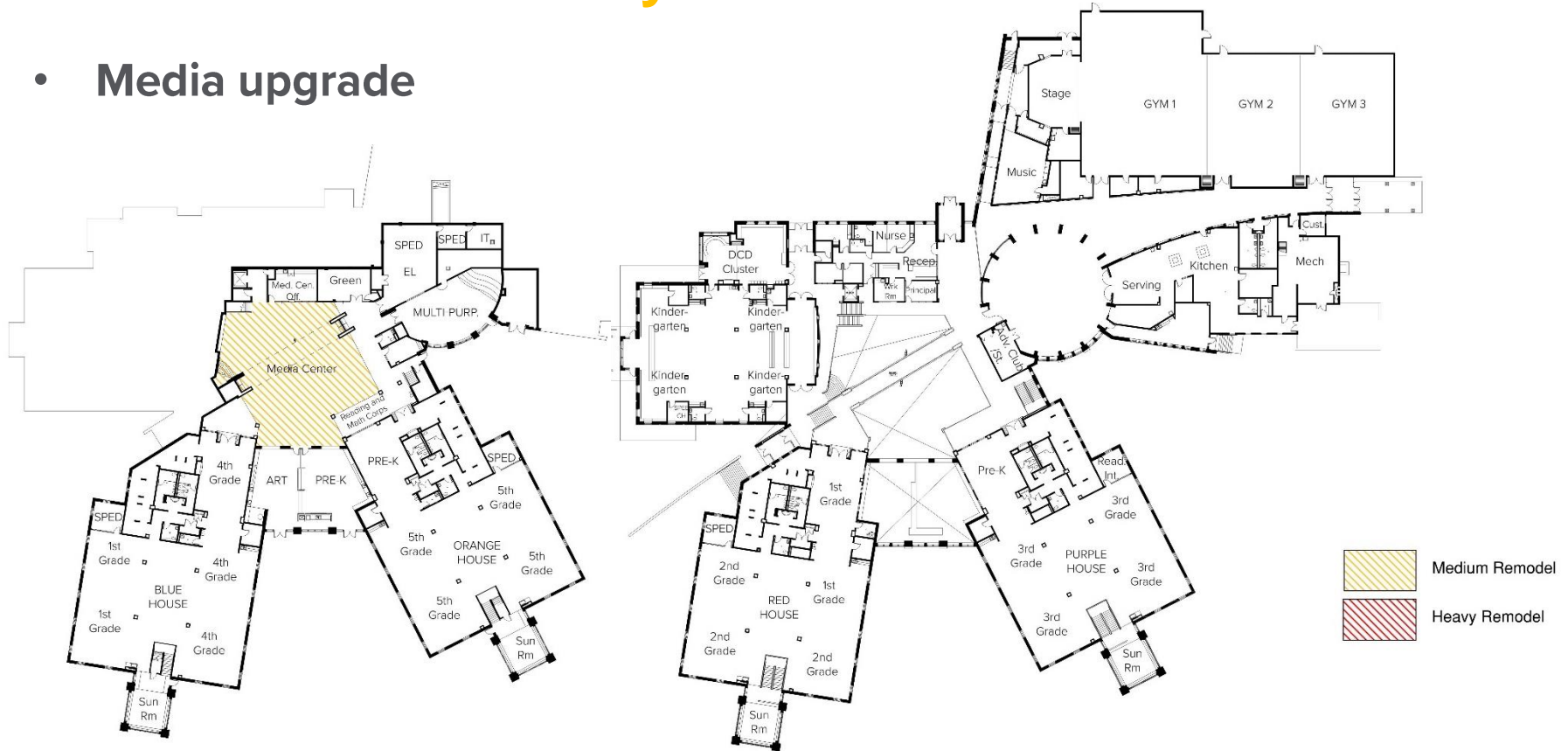
LOW PRIORITY

Stillwater Middle School:



Rutherford Elementary:

- Media upgrade



LOW PRIORITY

Existing Early Childhood Family Center:

- No change



Withdraw:

- Operation costs: \$40-75k/year
- Sell

HIGH PRIORITY



Central Services:

- Sell Building and Move Administration to Oak Park.
- Use the proceeds towards Oak Park renovation.

HIGH PRIORITY



IN CONCLUSION...

- **Professionally-led, Fair, and Inclusive Process**
- **Thorough and Data Driven**
- **Prioritized Recommendations For Action**

We hope this plan is a unifying force to move our community forward.

APPRECIATION AND GRATITUDE TO

Cunningham Group

Community Design Team

The Stillwater Area School Board

COMMUNITY DESIGN TEAM

RECOMMENDATION

LONG RANGE FACILITY PLANNING 2019
STILLWATER AREA PUBLIC SCHOOLS

PRESENTERS:

MICHAEL KAUL

TED WEGLEITNER

ANITA FOJTIK-CRAGGS

AVA ROOTS

DAN O'CONNOR