

# WELCOME

## Incoming 7th Grade Parent/Guardian Registration Orientation



### CENTRAL MIDDLE SCHOOL

Inspiring each student every day



# **Our Mission:**

**Inspire each student to learn continuously  
so they are empowered to reach personal  
fulfillment and contribute purposefully  
to our ever changing world.**

# Rich Larson

## Associate Principal

### New Schedule for CMS

Different Teachers and classes throughout the day

- 8 Period Modified Block
  - 8 periods on some days
  - 4 block periods on others
- 25 minute lunch, no recess



## 8-Period Modified Block

MONDAY	TUESDAY	WEDNESDAY	THURSDAY	FRIDAY
1st Period	1st Period	1st Period	2nd Period	1st Period
2nd Period	2nd Period			2nd Period
3rd Period	3rd Period	3rd Period	4th Period	3rd Period
4th Period	4th Period			4th Period
5th Period	5th Period	5th Period	6th Period	5th Period
6th Period	6th Period			6th Period
7th Period	7th Period	7th Period	8th Period	7th Period
8th Period	8th Period			8th Period

## EXAMPLE 7<sup>TH</sup> GRADE QUARTERLY SCHEDULE

PERIOD	Q1	Q2	Q3	Q4
1	FLEX	FLEX	FLEX	FLEX
2	Math	Math	Math	Math
3	Science	Science	Science	Science
4	English	English	English	English
5	Social Studies	Social Studies	Social Studies	Social Studies
6	Fine Arts	Health	World Language	World Language
7	Day 1 PE / Day 2 Music	Day 1 PE / Day 2 Music	Day 1 PE / Day 2 Music	Day 1 PE / Day 2 Music
8	Elective 1	Elective 1	Elective 2	Elective 2

Students will choose an elective for each semester and complete 1 quarter each of fine arts and health plus 1 semester of world language.

# CMS EXAMPLE WEEKLY SCHEDULE

PERIOD	MONDAY	TUESDAY	WEDNESDAY	THURSDAY	FRIDAY
1	FLEX	FLEX	FLEX Block	Math Block	FLEX
2	Math	Math			Math
3	Science	Science	Science Block	English Block	Science
4	English	English			English
5	Social Studies	Social Studies	Social Studies Block	Fine Arts Block	Social Studies
6	Fine Arts	Fine Arts			Fine Arts
7	PE / Music	PE / Music	Phy Ed	Elective 1 Block	PE / Music
8	Elective 1	Elective 1			Music

# CMS Schedule 21-22

- Students enter 9:15
- First class begins 9:25
- Lunch (TBD)
- School day ends 4:07

**\*\*\*Based on proposed school start/end times.**

# CMS Teams

- Approx. 150-180 students
- Set of teachers
- Making our big school feel small





# CMS Curricular Program for 7th grade

## Year-long Classes

- Math
- Science
- English
- Social Studies
- Phy Ed/Music  
(alternating)

## Semester Classes

- World Language
- Business & Management
- Engineering & Technology

## Quarter Classes

- Health
- Fine Arts

# Choices to make for 7th grade

## World Languages

- Spanish
- French
- German
- Chinese
- Span Lit & Culture

## Music

- Band
- Orchestra
- Choir
- Exploring Music

## Business & Management

- Personal & Business Career Literacy
- Entrepreneurship

## Engineering & Technology

- GreEngineering
- Designers & Makers

## Fine Arts

- Arts, Media & Culture
- Theater Arts
- Drawing & Painting

# Enriched Core 7 Courses

Enriched courses deliver grade-level standards with rigorous coursework and high-level discussions, with an emphasis on independent learning. Successful students typically have strong verbal skills and writing ability with above-grade level reading ability. Highly motivated students who are willing to persevere may self-select these courses.

- Science
- English
- Social Studies
- Spanish Language Social Studies (for Spanish Immersion students)

# CMS Curricular Program for 7th grade

## EXAMPLE OF CLASSES BY QUARTER

**1**

FLEX  
Math  
Science  
English  
Social Studies  
Fine Arts  
Day 1 PE /  
Day 2 Music  
Elective 1

**2**

FLEX  
Math  
Science  
English  
Social Studies  
Health  
Day 1 PE /  
Day 2 Music  
Elective 1

**3**

FLEX  
Math  
Science  
English  
Social Studies  
World Language  
Day 1 PE /  
Day 2 Music  
Elective 2

**4**

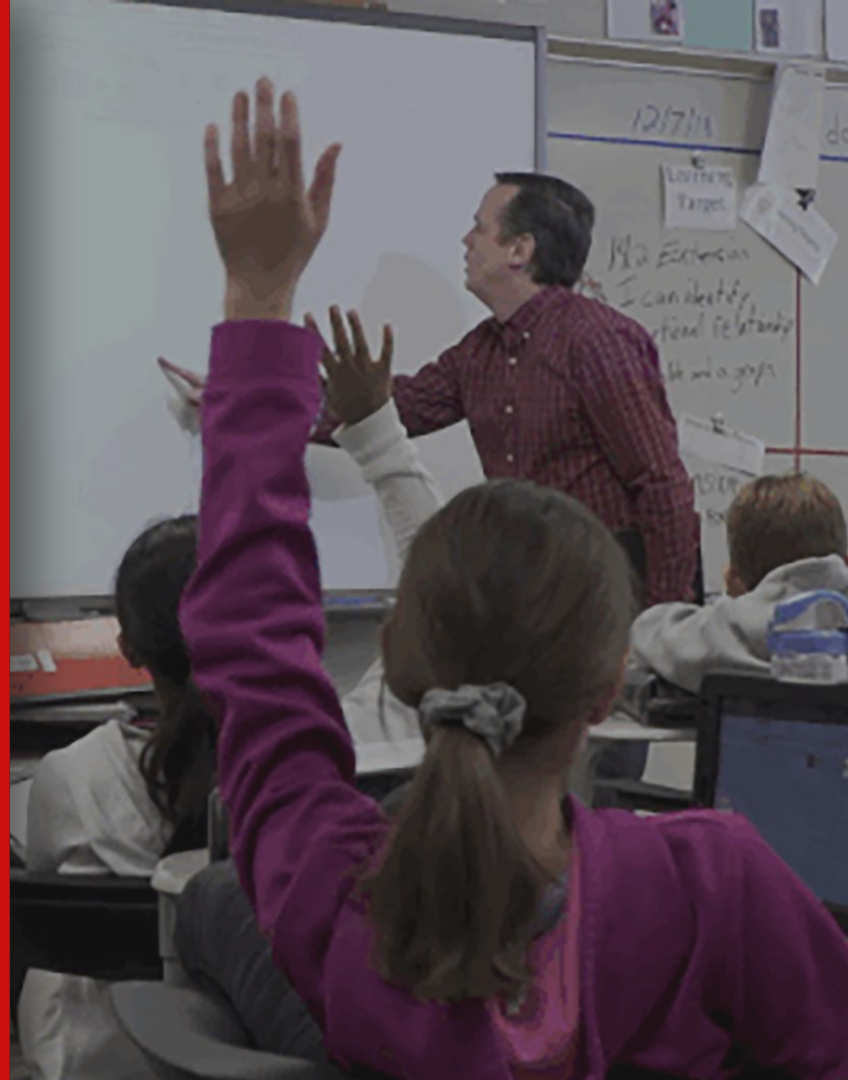
FLEX  
Math  
Science  
English  
Social Studies  
World Language  
Day 1 PE /  
Day 2 Music  
Elective 2

# 7th Grade Spanish Immersion at CMS

- Spanish Social Studies (all year)
- Spanish Language Literature and Culture as WL Choice (1 semester)

# FLEX

- Student choice every day
- On some days, activities will be designed to increase connections and success at school and beyond (Advisory)
- Role of the FLEX teacher



# Flex at CMS

A photograph of a classroom. A teacher with blonde hair, wearing a striped cardigan, stands on the right side of the frame, pointing towards a whiteboard. The whiteboard is covered with various charts and diagrams. In the foreground, several students are seated at desks, some using laptops. The classroom is decorated with various items, including a large leopard figurine on a shelf, a clock on the wall, and hanging plants. The overall atmosphere is one of an active learning environment.

Student choice built into  
the school day...

Support, Extension, Discovery

A photograph of several students sitting at a table in a classroom, engaged in a discussion. The background is a green wall. The image is overlaid with a semi-transparent dark blue filter.

# **EACH student is known at CMS**

**Teaming: how we  
build relationships**





# #CMSway



**Eagle Pride** at CMS  
Safe, Responsible  
and Kind



# Timeline For Registration



## **February 4**

Receive registration materials

## **February 4-15**

Register for classes online  
(google form)



## **March 5**

Confirmation letter sent home

# Registration Forms

Registration materials, including this presentation, will be available on the school website.



The screenshot shows a web browser window with the URL [edenpr.org/central-middle-school-home/academics/registration](http://edenpr.org/central-middle-school-home/academics/registration). The website has a red header with navigation links: OUR DISTRICT, SCHOOLS AND PROGRAMS, CAREERS, LOGIN, CONTACT US, TRANSLATE, and a search icon. Below the header is the school logo for Central Middle School, featuring a stylized 'Ep' and the tagline 'Inspiring each student every day'. A secondary navigation bar includes links for Experience CMS, Student Life, Academics, Activities, Enroll, and Contact CMS. A dark grey footer bar contains links for Curriculum Night, Departments, i-Learn, Course Registration, AVID, Special Education, Academic Support, English Learners, Gifted & Talented, and Summer Academy.

## Course Registration

Students who currently attend Edin Prairie Schools will receive course registration packets from their teacher prior to the registration window opening.

Families who are new to the area, please contact the Welcome Center for registration materials. You may [download the registration forms](#) from the website, pick them up at the Welcome Center (8100 School Road), or call 952-975-7008 and have them mailed or emailed to you. If you are interested in touring the school prior to enrolling please contact [Nikki Krieger](#) at (952) 975-7315.

Please visit our [screencast](#) and [Slideshow](#) to view information from our 6th Grade Parent Orientation night which occurred on February 4, 2020. Presentations on the [AVID program](#) and [Special Education](#) were also shared as well as an [interesting article](#) about students in their middle school years.



# Success at CMS

- Feb 2: Randy Thompson; Feb 4 Steph Bender

- **Transition**
  - For you and them!
- **Academic Skills**
  - Organization
  - Time management
  - Self-advocacy
- **Social/Emotional Skills**
  - Relationships
  - Identity exploration



# Student Activities - Connie Ewing

- Many options
- Sports, arts, academics
- After school/before School
- Info available in announcements and on the CMS website



# Upcoming Events

- Counselors will visit Elementary Schools in May
- Supply list mailed in July
- Team assignments and orientation information mailed in August



# Contact Us

---

## Registration and general questions

Rich Larson

952-975-7312

Richard\_Larson@edenpr.org

## Math placement or Gifted Services questions

Alison Miller

952-975-7342

Alison\_Miller@edenpr.org

[www.edenpr.org/cms](http://www.edenpr.org/cms)



**THANK YOU**



**CENTRAL MIDDLE SCHOOL**

Inspiring each student every day



# Break

We will reconvene  
at 7:30 for  
the Academic  
Extension Meeting

- Enriched
- Advanced
- Math  
Acceleration



**CENTRAL MIDDLE SCHOOL**  
Inspiring each student every day

A young girl with blonde hair, glasses, and braces is smiling at the camera. She is wearing a black t-shirt with the word "SHINET" visible. In the background, other students are visible, including a boy in a dark hoodie and another boy in a blue shirt. The text "7th Grade Academic Extension 2021 -22" is overlaid in white on the image.

**7th Grade  
Academic Extension  
2021 -22**

# Academic Extensions

## Alison Miller

Gifted and Talented  
Coordinator

[alison\\_miller@edenpr.org](mailto:alison_miller@edenpr.org)

952-975-7342



# 7th Grade Agenda

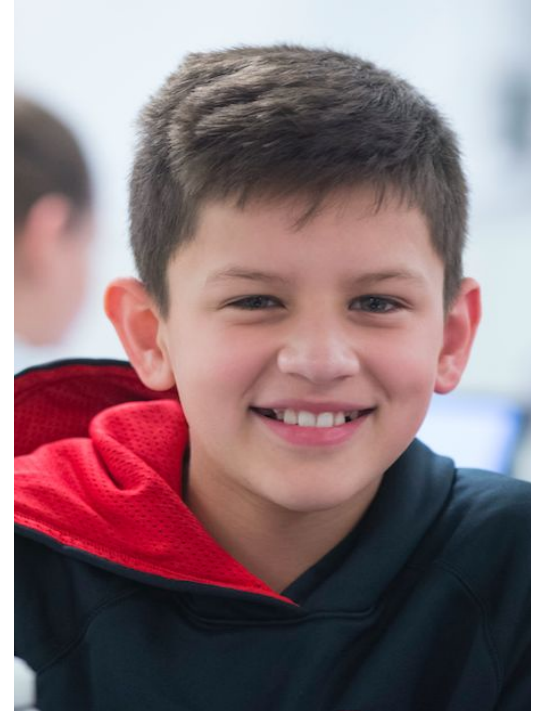
Math Pathways/Courses

Flex

Enriched Core

Advanced Core Courses

Additional Opportunities





**CENTRAL MIDDLE SCHOOL**

Inspiring each student every day

# Grade Level Math Pathways

Math 6

PreAlgebra 7

Algebra/Honors Algebra 8

Geometry/Honors Geometry

Algebra 2/Honors Algebra 2

FST (Functions, Statistics,  
Trigonometry)

PreCalculus

AP Calculus

Calculus 3

High school graduation requirement

College credit available



**CENTRAL MIDDLE SCHOOL**

Inspiring each student every day

**Above-Grade/Accelerated  
Level**

# Math Pathways

Mosaic 5

Honors PreAlgebra 6

Honors Algebra 7

Honors Geometry 8

Honors Algebra 2

AP Statistics

Honors PreCalculus

AP Calculus

Calculus 3

High school graduation requirement

College credit available

# Incoming 7th graders

Grade level: PreAlgebra 7

Above-grade level: Honors Algebra 7

*For students who have completed PreAlgebra or have shown mastery of standards.*

All 6th graders will take district math assessment in May to determine appropriate course placement at Central Middle School. More information will be shared later this spring.



2020-2021 GRADE LEVEL

# ACCELERATED MATH



# Honors Algebra 7

(2 sections)

## Section 1234

- Process information more deliberately
- Benefit from:
  - A few more examples
  - Activities to reinforce concepts
  - Fewer homework problems

## Section 1235

- Process information more quickly
- Minimal notes are sufficient for hw success including variations of what was shown in class
- More extensive hw for appropriate practice

# Section Placement

(CMS will place all Honors Algebra students)



CENTRAL MIDDLE SCHOOL

Inspiring each student every day

- 6th grade algebra placement tests
- Student survey to collect self-reported learning preference data
- Consult 6th grade teachers for confirmation of section

## Section 1234

- Process information more deliberately
- Benefit from:
  - A few more examples
  - Activities to reinforce concepts
  - Fewer homework problems

## Section 1235

- Process information more quickly
- Minimal notes are sufficient for hw success including variations of what was shown in class
- More extensive hw for appropriate practice

# Importance of Appropriate Placement

## Fast Processor in Deliberate Processing

- Impatient in class
- Impatient with other learners
- Do not experience enough daily practice
- Enjoy math less

## Section 1234

- Process information more deliberately
- Benefit from:
  - A few more examples
  - Activities to reinforce concepts
  - Fewer homework problems

## Section 1235

- Process information more quickly
- Minimal notes are sufficient for hw success including variations of what was shown in class
- More extensive hw for appropriate practice

# Importance of Appropriate Placement

## Section 1234

- Process information more deliberately
- Benefit from:
  - A few more examples
  - Activities to reinforce concepts
  - Fewer homework problems

## Section 1235

- Process information more quickly
- Minimal notes are sufficient for hw success including variations of what was shown in class
- More extensive hw for appropriate practice

## Deliberate Processor in Fast Processing

- Less Confident after notes (want more exposure)
- Overwhelmed with workload (daily hw might take hours)
- Feel rushed on assessments
- Begin to feel dumb

# Successful Math Students ...

- Take careful notes
- Concentrate on understanding concepts vs. memorizing procedures
- Do homework regularly (show work as modeled in notes)
- Correct homework carefully and learn from mistakes
- Bring up questions in class regarding material in which they are not confident
- Study for tests by practicing problems over and over
- Come in for extra help when needed

# How To Prepare

- Develop supporting skills (previous slide)
- Solidify current curriculum (6th or Pre-Alg)
  - Online resources
    - Khan Academy
    - Big Ideas
    - Consult your child's 6th grade teacher for more resources

# Pre-exposure to Algebraic Topics is Problematic for Gifted Students

I know how to do this! I've seen this before!

I saw this last year and was LOST!

I totally understood this last year; but I keep getting them wrong?!

Why didn't I see this stuff last year? My teacher was the worst!



# **Pre-exposure to Algebraic Topics is Problematic for Gifted Students**

One of the most significant consequences is that students lose a sense of excitement and discovery in Algebra when they have been exposed to a large part of it before ("Seen it!") but it is not mastered or not enough of the course has been mastered to test out.



# What about Summer Classes or Enrichment Opportunities?

- What is your goal for having your child take a summer class?
- What is the advertised purpose behind the course?  
Do they match?
  - To keep thinking mathematically over the summer
  - To inspire a love for mathematics
  - To pursue specific applications of math (robotics, coding, engineering)
  - To get a “head start” on Algebra?

# Final Thoughts on Preparation



CENTRAL MIDDLE SCHOOL  
Inspiring each student every day

- Stress a solid foundation in current 6th grade course
- Trust the CMS math teachers to facilitate your child's acquisition and mastery of Pre-Algebra or Algebra 1 without relying on pre-exposure



2020-2021 GRADE LEVEL

**Flex**

# Flex at CMS

**Student choice five days a week to encourage ownership of learning and exploration beyond classroom instruction**

- **Support**
- **Extension**
- **Discovery**

## Flex gives students choice in challenge and enrichment



CENTRAL MIDDLE SCHOOL  
Inspiring each student every day

**Extension:** This is for students who would like to dive deeper into the learning targets. “Going beyond” what was covered in class. Extension could come through direct instruction, collaboration with others, or independent work time.

**Discovery:** Experiences are offered based on student passions, interests and/or curiosities not directly linked to standards. Discovery could be delivered through direct instruction collaboration with others, or independent work time.



**ENRICHED CORE 7 COURSES**  
**English, Science and**  
**Social Studies**

# Enriched Core 7 Courses

Enriched courses deliver grade-level standards with rigorous coursework and high-level discussions, with an emphasis on independent learning. Successful students typically have strong verbal skills and writing ability with above-grade level reading ability. Highly motivated students who are willing to persevere may self-select these courses.

- Science
- English
- Social Studies
- Spanish Language Social Studies (for Spanish Immersion students)

# Enriched Science 7

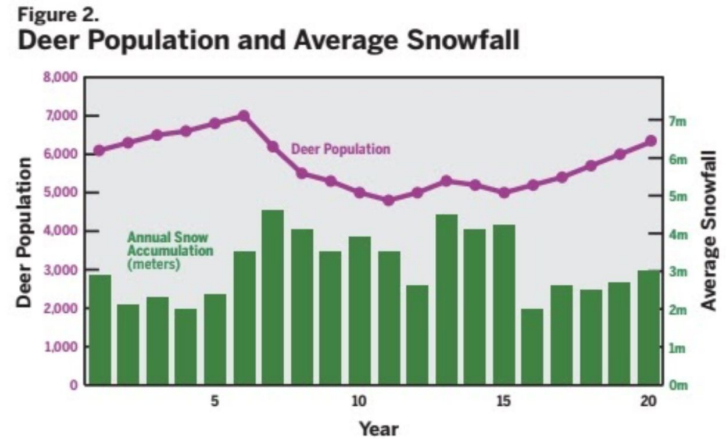


CENTRAL MIDDLE SCHOOL  
Inspiring each student every day

- Self-led science fair experiment
- Create and post a video
- Science Connection podcasts (twice a month)
- Longer assignments and tests with more challenging questions

Use the graph below to:

1. Identify what is biotic and what is abiotic.
2. Describe how abiotic factors impact population using examples from the graph.





# Enriched English

Same learning targets for English and Enriched English:

- *I can organize my writing by utilizing appropriate structure*
- *I can analyze a theme or a main idea of a text*

Enriched will use texts that are at a higher reading level and more complex. For example: Fahrenheit 451 compared to The Giver.

There will be less focused instruction on writing skills as students are expected to have strong writing ability including topic sentences, supporting details, and conclusions.



# ADVANCED CORE 7 COURSES

# Advanced Core 7 Courses



CENTRAL MIDDLE SCHOOL  
Inspiring each student every day

**Advanced Courses** are designed for MOSAIC and additional highly capable students. These courses provide grade-level standards with more rigor than Enriched classes including advanced discussions and research projects using more abstract and interdisciplinary thinking. Advanced courses are available to MOSAIC and students who meet entrance criteria. Please indicate your interest on your registration.

- Science
- English
- Social Studies

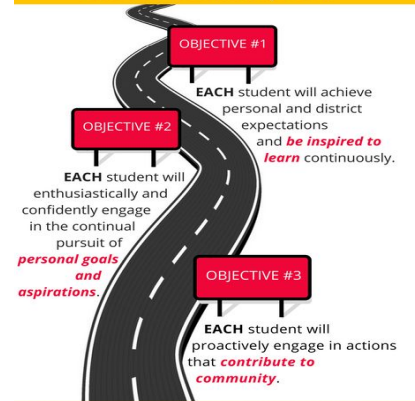
## Strategic Plan: THE ROAD MAP for EDEN PRAIRIE SCHOOLS

The mission of Eden Prairie Schools is to inspire **EACH** student to learn continuously so they are empowered to reach personal fulfillment and contribute purposefully to our ever-changing world.



### OUR STRATEGIC OBJECTIVES

Together we will work to achieve the following three strategic objectives in Eden Prairie Schools by 2018.



[www.edenpr.org/StrategicPlan](http://www.edenpr.org/StrategicPlan)

# Advanced Core 7 Courses

## English

Analyze & communicate a text's depth and complexity.

For example: *Find the theme and tracing its development throughout the novel. Create a slide presentation with supporting evidence. Use correct text and MLA book citations.*

## Social Studies

- Faster paced or condensed units
- History Day Project
- More debate & public speaking
- More depth on fewer units (less of a survey course)

## Science

- Monthly assigned reading & book report
- Independently created and carried out controlled experiment
- More detailed lab reports and written conclusions

# Advanced Core 7 Courses

- Designed for MOSAIC and any student who qualifies based on specific entrance criteria.
- Mosaic students are eligible for Advanced courses of their choice
- Non-Mosaic students indicated interest on registration form and register for corresponding Enriched Core course
- Not available for Spanish Language Social Studies
- Entrance criteria must be met for non-Mosaic students
  - Fastbridge aReading 98th percentile AND
  - Successful writing assessment
  - Science has an additional math requirement

# Additional Opportunities

- Course placement is usually determined by previous coursework. When prior learning is unclear, students may be assessed on their mastery of standards to determine course placement.
- Some students may choose online course options (at their expense) for acceleration. CMS will accept completion under certain guidelines.
- Qualified students who are above-grade level in particular content areas may take appropriate courses at Eden Prairie High School
- University of Minnesota Talented Youth Mathematics Program (UMTYMP) is a tuition-based program that provides a highly accelerated math program for exceptional math students. Registration is in the spring. Find more information at [www.mathcep.umn.edu/umtymp](http://www.mathcep.umn.edu/umtymp)



**CENTRAL MIDDLE SCHOOL**  
Inspiring each student every day

Please feel free to contact me  
with further questions.

**Alison Miller**

Gifted and Talented Coordinator

[alison\\_miller@edenpr.org](mailto:alison_miller@edenpr.org)

952-975-7342





# THANK YOU



**CENTRAL MIDDLE SCHOOL**

Inspiring each student every day