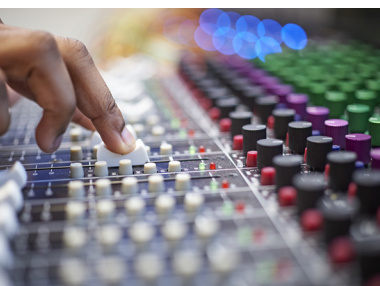




# GET INTO **MUSIC**

AT THE ROYAL HOSPITAL SCHOOL



## MUSIC AT RHS

A wide variety of musical groups rehearse and perform regularly: Band, Orchestra, Chapel Choir, Chamber Choir, Musical Theatre Group, Big Band and various chamber music groups, including rock and jazz bands. The Chapel Choir has recently broadcast on BBC television and the British Forces Broadcasting Service as well as regularly performing at St Paul's Cathedral, St Martin-in-the-Fields and the Invictus Games. The School Band played at the opening of the National Horseracing Museum in the presence of Her Majesty The Queen and completed a 2 ½ week tour of Canada on their last overseas visit. There are over 50 music events each year which pupils are involved in, ranging from high profile concerts with the BBC Big Band and the Royal Marines School of Music Training Band to the more informal Notes and Nibbles lunchtime concerts. Whatever you play, there is an ensemble for you!

## ORCHESTRAS, ENSEMBLES & CHOIRS

### MUSICIANSHIP SURGERY

Come and fill in the gaps in your musical knowledge. No matter what level, come and get rid of the fear of sight-reading and theory by asking questions and getting to grips with the missing pieces of your music learning. Come along to gain essential knowledge and assistance for music theory exam preparation, university applications and music auditions.

### ADVANCED CLASSICAL GUITAR ENSEMBLE

Enjoy an eclectic mix of musical styles, working in a classical guitar ensemble environment. Guitarists need to be Grade 5 or above and efficient at reading sheet music (not tab).

### MUSICAL THEATRE GROUP

This group puts on songs from smash hit West End and Broadway shows as well as current and past chart hits. This group is exciting, fast paced and lots of fun, and is coached by an industry professional. No audition required.

### MARCHING BAND / CONCERT BAND

The Band rehearses twice a week and is run by the Bandmaster. It is open to all year groups. There are no auditions but pupils should be of a minimum Grade 3 standard and be willing to commit themselves to a group which plays a wide variety of music from the classics to popular music.

### BRASS ENSEMBLE

The Brass Ensemble is aimed at junior players, giving them an opportunity to gain experience of playing a wide range of music from classical through to the lighter and more jazzy styles. Open to all ages but aimed at players of all brass instruments up to Grade 3 to 4. It is an ideal group to join to make the transition to the full Concert Band easier.

### SAXOPHONE ENSEMBLE

The Saxophone Ensemble is run by our saxophone teacher. The music played is varied from jazz to contemporary and there is often an opportunity to play other saxophones including the soprano and baritone.

### SYMPHONY ORCHESTRA

The Symphony Orchestra plays an important part in the development of a pupil's musical experience. The music played is wide-ranging and varied – music from the shows, symphonic and light classical. String players of Grade 3 and above ability are very welcome and are a very necessary part of this ever vibrant ensemble.

### SAMBA CLUB

Samba band is an opportunity for students to explore the exciting and pulse raising rhythms from 'Batacada', the traditional Brazilian style of parade drumming. It is suitable for complete beginners, experienced drummers and musicians of all disciplines looking to broaden their rhythmic horizons!

### CHAPEL CHOIR

The Chapel Choir has become one of the most important and prestigious ensembles within the Music Department, performing regularly at St Paul's Cathedral, St Martin-in-the-Fields and the Royal Albert Hall. Performances at the Royal Albert Hall have included the John Rutter Christmas Celebration concerts with the Royal Philharmonic Orchestra and the Royal British Legion Festival of Remembrance broadcast on BBC television and radio. Tours abroad have included performances at Notre Dame in Paris, Salzburg Cathedral, Barcelona Cathedral, St Mark's Venice and St Peter's Basilica in Rome. In 2015 they toured Malta and in October 2018 toured New York. New members are always welcome but previous experience of singing in a choir is recommended. The choir rehearses twice a week and there are auditions for new members. Please see the Director of Music if you are interested in joining.

### JUNIOR CORPS OF DRUMS

The Corps of Drums is one of the jewels in the RHS crown, and this pupil-led group have performed both nationally and internationally at some high profile and prestigious events, including for HM The Queen and other members of the Royal Family. To build further on this unique facet of school life and to ensure continuity, a Junior Corps of Drums was formed in September 2017. Primarily aimed at beginner drummers in the Lower School, this ensemble receives technical tuition from one of our drum teachers.

### MUSIC TECH CLUB

The music technology club is run by our music technology teacher and gives pupils the opportunity to access our state-of-the-art music technology suite. The suite comprises three separate rooms; a control room with Toft ATB24 console and 27" iMac running Logic Pro X, vocal booth/amp room and a suite of iMacs also running Logic Pro X that doubles as a live/band room. The music technology club is an excellent opportunity for those who do not take music technology as a subject (currently only offered in Sixth Form) to use these outstanding facilities.

### INTERMEDIATE STRING ENSEMBLE

With an accessible and diverse repertoire, String Ensemble is aimed at players of a Grade 2-5 standard, and is run by one of our violin teachers. Come and be part of a wonderful string sound whilst developing your sight reading and musicianship skills, and having fun!

## **SENIOR ROCK GROUP**

Run by one of our visiting music teachers, this is a performance project for singers and instrumentalists. Rehearsals will take place in the music tech room and the band will rehearse existing rock and pop repertoire and develop devised material for performances at school and beyond...

## **FLUTE ENSEMBLE**

Run by our flute teacher, and welcoming flautists of all abilities! They play a wide variety of music including Swan Lake, Pirates of the Caribbean, Nimrod, Pink Panther, Disney, Beatles and even some flute beatboxing! Go and hang out with your flutey friends, make some music, improve your ensemble skills, aural training and sight-reading, all whilst having fun.

## **BIG BAND**

The Big Band plays a mixture of traditional big band scores and modern jazz classics. They have been lucky enough to perform with some of the country's finest jazz musicians, recently including the BBC Big Band, The Chris Ingham Trio and Derek Nash. Do come along and get funky!

## **ADVANCED STRING ENSEMBLE**

Advanced String Ensemble is open to all ages but aimed mainly at those that are Grade 6 standard and above. Further your ensemble playing skills whilst tackling the exceptionally rich and varied repertoire written for strings. From Bach to Britten and beyond!

## **CHAMBER CHOIR**

This auditioned choir represents the Royal Hospital School's choral elite, performing in all the School's major concerts and making frequent appearances further afield. Singers of Grade 5 standard and above are welcome to audition for this exciting and demanding ensemble. A good ear is essential and the ability to read music is usually required.

## **INSTRUMENTAL LESSONS / LOCKERS**

Lessons are available on a large number of instruments. Please contact [music@royalhospitalschool.org](mailto:music@royalhospitalschool.org) for information.

Lockers are available for those who have instrumental lessons at the school or bring instruments to school for orchestras and other ensembles. Please see the Bandmaster to ask for a music locker.

## **LOAN OF INSTRUMENTS**

A full range of instruments are available to borrow free of charge. Please see the Bandmaster or your visiting music teacher for more information.

