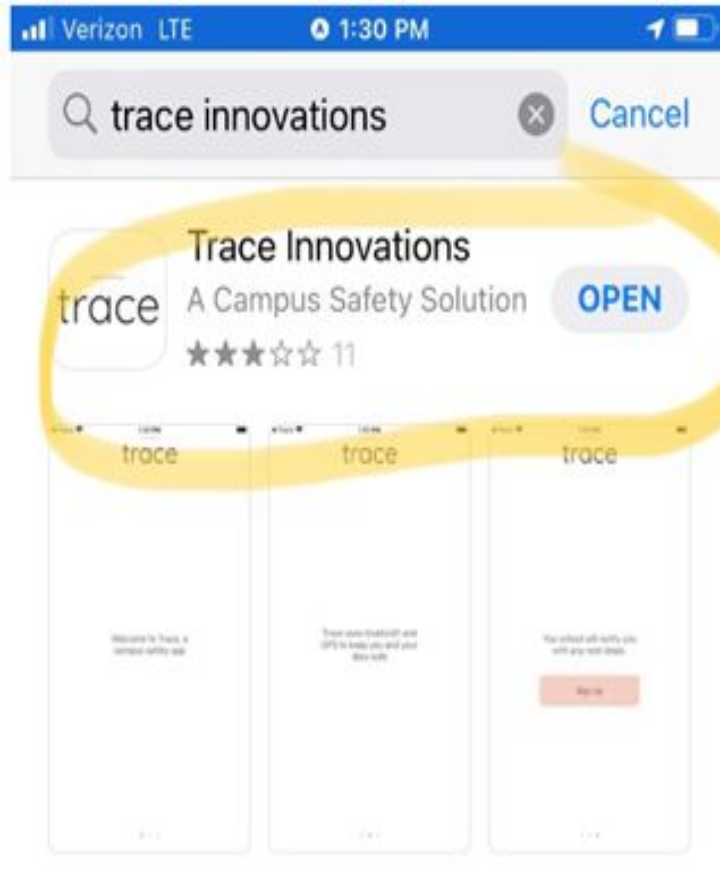


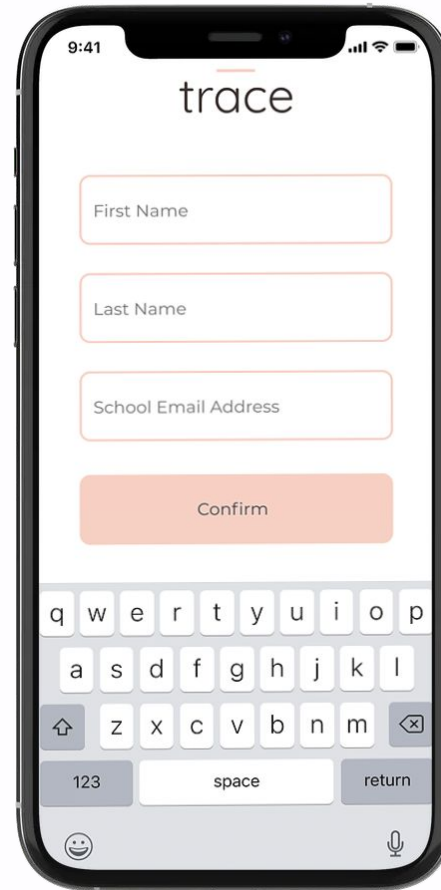


trace

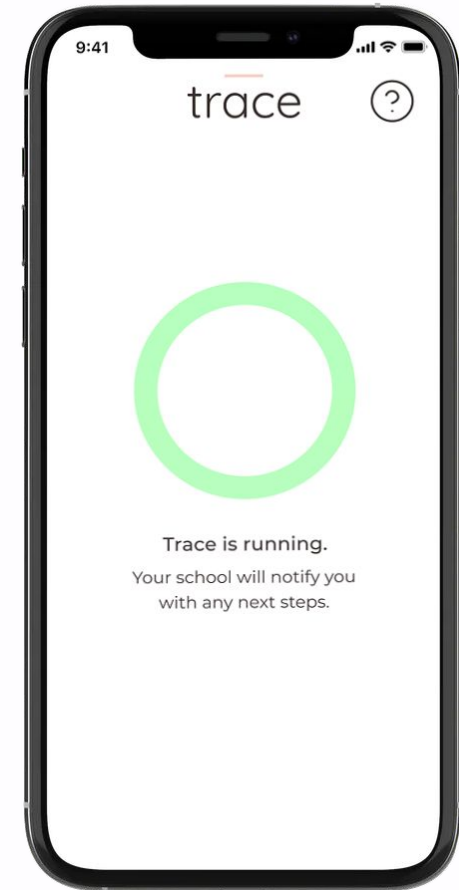
Downloading and Running Trace



Download

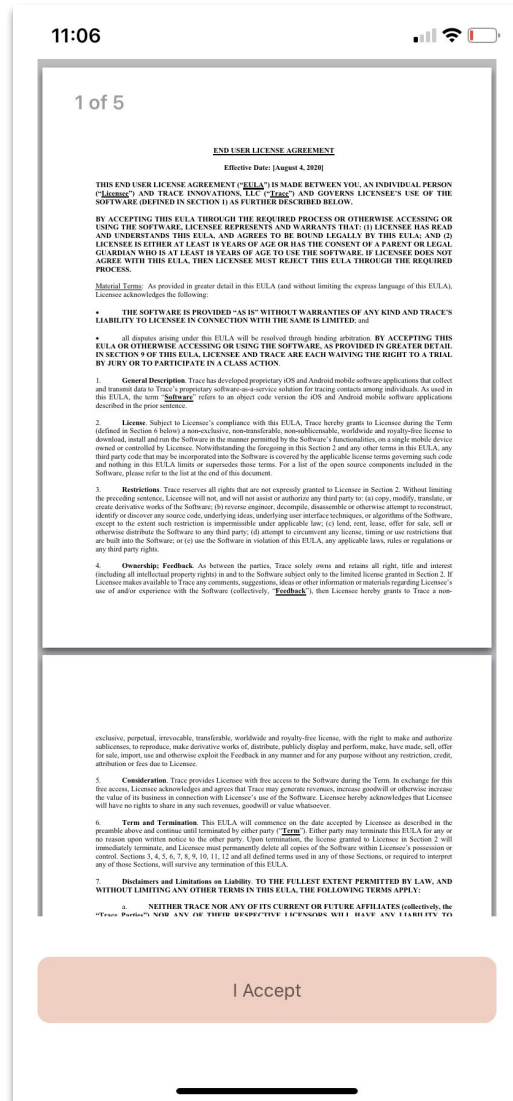


Sign Up

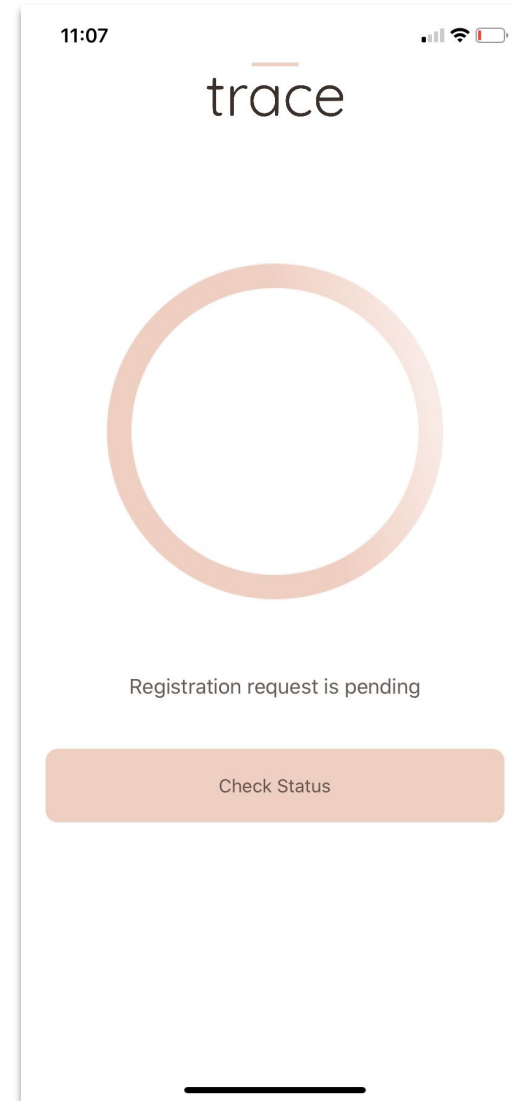


Set and Forget

Sign-up on Trace (iOS)

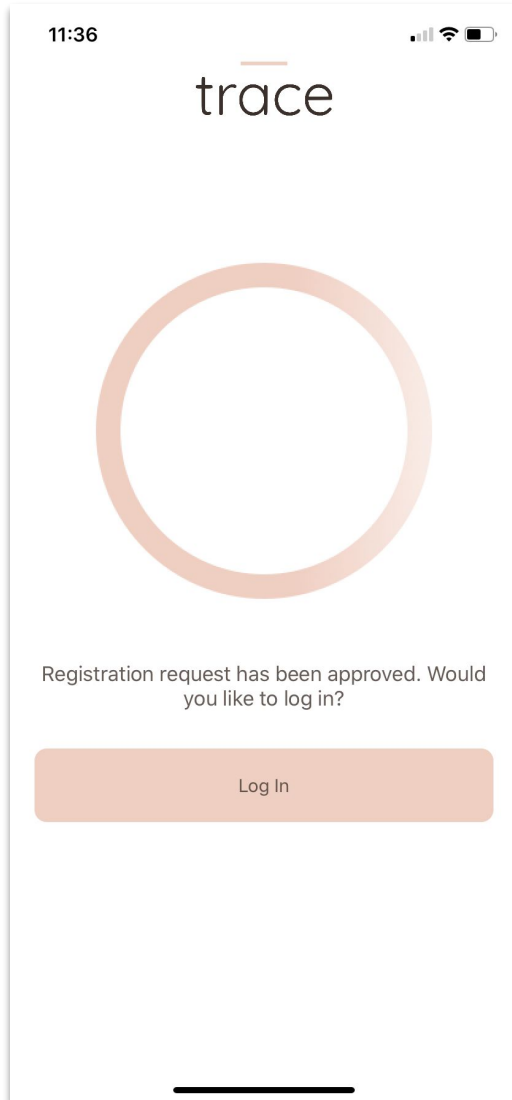


- Open the Trace app
- Begin the sign-up process by reading and agreeing to the end user license agreement
- Click *I Accept*

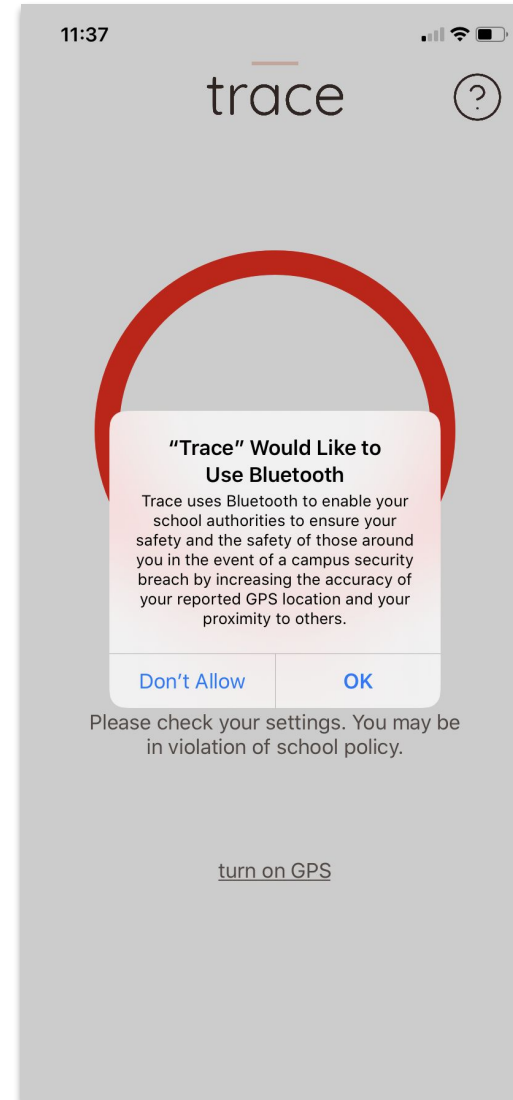


- *Enter your first and last name, a phone number (doesn't matter which phone number), your Lakeside Email and password.*
- *After you complete sign-up, you will receive a link to verify your email (check your spam folder).*
- Click on link to verify email and initiate registration with your school administrator

Log-in to Trace (iOS)

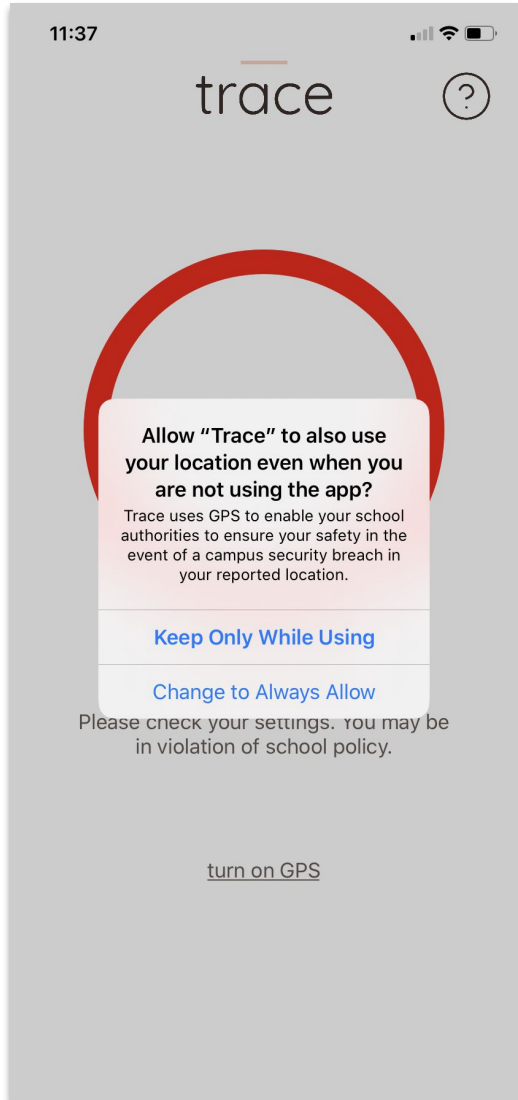


- After your registration request is approved by your admin you can open Trace app to login
- Use your school email ID and set password to login

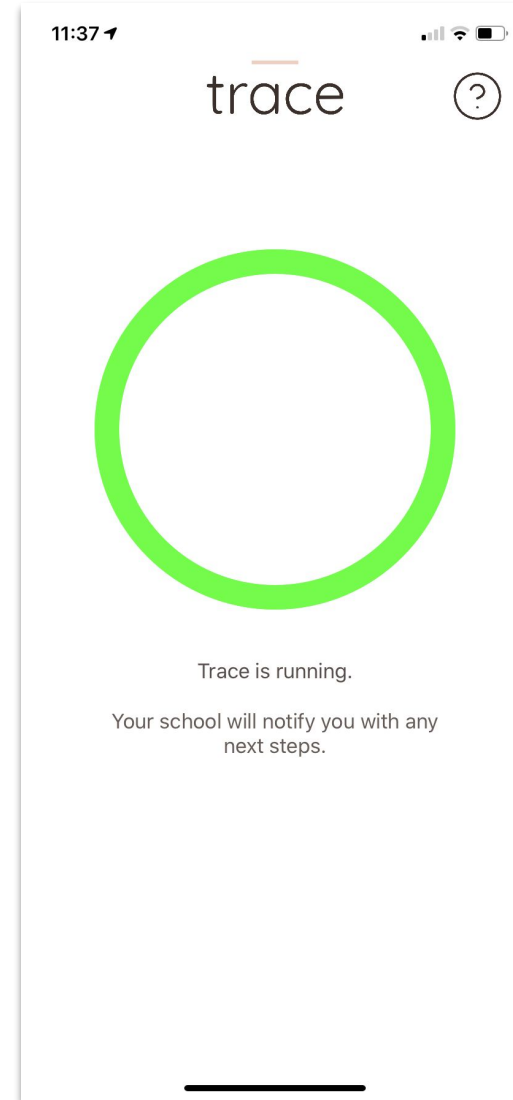


- Click on OK to enable bluetooth access.

Log-in to Trace (iOS)



- Allow Trace to location access by first clicking on *Allow While Using App* and then clicking on *Change to Always Allow*.



- You are done!
- Set and forget
- Your school will notify you if the Trace app is not running.