

Laguna Beach High School JUNIOR PACKET Class of 2023



**The BEST way to predict
YOUR FUTURE
is to CREATE it!**

LBHS Junior Year Timeline

FALL & WINTER

- Review your schedule and remind yourself of graduation requirements and college requirements – are you on track?
- Continue to focus on your courses and do your best.
- Register for the SAT or ACT exams if needed.
- Schedule a Junior Conference with your LBHS Counselor (January – April). Parents may attend (Optional).
- Review SAT/ACT/PSAT results to determine strengths/areas in need of improvement and if a second test date is necessary.
- Check community service hours and get involved!!
- Attend college rep visits via the College and Career Center (CCC).
- Start a College Search on Big Future.

SPRING

- Attend the PSAT Scoresback Night information session if offered at LBHS.
- Register for the SAT or ACT and take by June if needed.
- Attend Junior Conference (January – April) and come with questions!
- Visit college campuses and attend college events.
- Build a list of targeted colleges and start researching admissions requirements. Visit the College and Career Center (CCC) for help.
- Attend a college fair in your area.
- Begin to draft UC and Common App essays (English class assignment).
- Investigate scholarships and financial aid. Visit the CCC Canvas Page for help.
- Talk to Junior teachers about writing a letter of recommendation if needed.
- Athletes: Register for NCAA and send transcript.
- Attend Common App Workshop in May if applying to private colleges.

SUMMER

- Finalize college list and join email lists.
- Set up interviews if offered.
- Finalize UC and Common App essays.
- Register for Fall SAT/ACT tests if needed.
- Complete specialized portfolios if needed for art, film, etc.
- Visit colleges that you are interested in or take a virtual tour on their website.

EXTRA

- Clean up social networking sites!
- Keep track of activities and/or accomplishments.
- Make a weekly appointment to work on college applications.
- Check College and Career Center (CCC) Canvas page for opportunities.
- Connect with Tracy Van Mil in the LBHS Writing Lab via her Canvas page for essay assistance.

Junior Students What's Next?

Junior Conference (Optional)

Nichole Rosa A-G
nrosa@LBUSD.org

Eric Banducci H-P
ebanducci@LBUSD.org

Angela Pilon Q-Z
Apilon@LBUSD.org

This appointment will encompass a holistic review of graduation/community service requirements, UC requirements, senior year classes, and a task timeline for Junior year (spring) and Senior year.

Steps:

- Contact your student's Counselor via email to schedule an appointment
- Appointments can be made from January to April 2022
- Usually scheduled 2-4 weeks prior to appointment date
- Students will need to notify their teacher that they will be missing class for their appointment

LBHS College and Career Center (CCC)

- Click on to the College and Career Center (CCC) module on Canvas
- Schedule a meeting with Mrs. Gregory (lgregory@lbusd.org) to discuss college majors/careers
- Discuss CTE courses that relate to major/career ideas
- Help with developing a college list
 - Two-year community college, four-year college and vocational information
- College tours and Summer Program information
- Information regarding Financial Aid and Scholarships
 - Contact Angela Shipp at ashipp@lbusd.org



Laguna Beach High School

Graduation Requirements

Students must complete **230 credits** in order to be eligible for graduation. While courses may satisfy the LBHS graduation requirements, the courses do not necessarily satisfy eligibility criteria for universities, colleges, or athletic associations such as NCAA or NAIA.

ENGLISH	40 credits
SOCIAL SCIENCE	35 credits
• 9th: Global Studies and Skills	5 credits
• 10th: World History or AP European History	10 credits
• 11th: U.S. History or AP U.S. History	10 credits
• 12th: Econ/American Gov or AP Econ/AP American Gov	10 credits
SCIENCE	20 credits
• Physical Science, e.g. Integrated Science 1 or Physics	
• Life Science, e.g. Integrated Science 2 or Marine Ecology	
MATHEMATICS	30 credits
• Must Complete Algebra I	
• Algebra I credit from middle school does not count towards the 30 credit high school requirement	
Physical Education/Sports	20 credits
Visual and Performing Arts	10 credits
World Language	10 credits
Health	5 credits
Electives	60 credits
TOTAL	230 credits

Community Service

All students are required to complete **40 hours** of community service as a graduation requirement. The total hours will be adjusted for students not attending LBHS all four years.



UC and CSU Minimum Course Requirements

	LBHS	UC and CSU
History/ Social Science (UC Category "a")	3.5 years, plus .5 of Health	2 years required <i>Two units (equivalent to two years) of history/social science required, including: one year of world history, cultures and historical geography and one year of U.S. History; or one-half year of U.S. History and one-half year of civics or American government.</i>
English (UC Category "b")	4 years	4 years required <i>Four units (equivalent to four years) of college preparatory English composition and literature required, integrating extensive reading, frequent writing, and practice listening and speaking with different audiences. Students may only use 1 year of ESL/ELD English.</i>
Mathematics (UC Category "c")	3 years	3 years required, 4 years recommended <i>Three units (equivalent to three years) of college preparatory mathematics (four units are strongly recommended), including or integrating topics covered in elementary algebra, advanced algebra, and two and three dimensional geometry.</i>
Laboratory Science (UC Category "d")	2 years	2 years required, 3 years recommended <i>Two units (equivalent to two years) of laboratory science are required (three units are strongly recommended), providing fundamental knowledge in two of the following: biology, chemistry, or physics.</i>
Language Other than English (UC Category "e")	1 year	2 years required, 3 years recommended <i>Two units (equivalent to two years, or through the second level of high school instruction) of the same language other than English (three units recommended)</i>
Visual & Performing Arts (UC Category "f")	1 year	1 year required <i>One Unit (equivalent to one year) required, chosen from one of the following categories: dance, music, theater, or visual arts (e.g. painting, web/graphic design, film/video, inter/multimedia arts).</i>
College-Prepara tory Elective (UC Category "g")	4+ years (60 Units)	1 year required <i>One unit (equivalent to one year) chosen from the "a-f" courses beyond those used to satisfy the requirements of the "a-f" subjects, or courses that have been approved solely in the elective area.</i>

LBHS ACADEMIC SUPPORTS 2021-2022

MATH LAB



Algebra I ◊ Geometry ◊ Algebra II ◊ Calculus ◊ AP Calculus

My name is Robin Lux and I am your LBHS Math Tutor. I am here to help with clarifications of lessons, homework and test preparation. I am on CANVAS.

Math Lab Hours

MONDAY-THURSDAY

8:30am-2:45pm

* Closed 11:46am - 12:16pm

FRIDAY

8:30AM- 2:45PM

* Closed 11:48am - 12:18pm

Classroom ABOVE the NORTH GYM

For appointments, contact me at rlux@lbusd.org

Include subject, teacher, and lesson information.

WRITING LAB



Need help or feedback on a paper?
The **Writing Lab** is here to help!

Submit your essays to Mrs. Van Mil in the Writing Lab anytime through Google Docs. Simply click on "share" in the upper right corner of your document and send to tvanmil@lbusd.org

HOURS

Monday – Thursday

8:00am-12:30pm

Fridays - Closed

Don't forget to include the **DUE DATE** of the assignment. Although you do not need to be present for your paper to be edited, please keep in mind that **papers are not reviewed in the evenings, on weekends, or when the lab is closed.** Submit papers early to guarantee a timely response. Appointments are available during Writing Lab hours. Also, review-learning modules in the **Writing Lab course on Canvas** for specific quick reference help.



(Formerly GradeSlam)

PAPER gives students 24/7 online help from live tutors in all academic subjects. [VISIT Student BEACHPORT to login.](#)

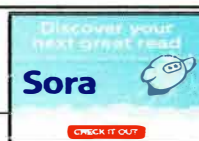
PAPER is to be used for academic purposes only. Be polite and respectful to the PAPER staff. Users are representing LBHS!

Teachers and administrators have the ability to review all PAPER interactions.

Human help is always better than online help. Students should try their best to get help from LBHS teachers or use the on-campus math lab and writing lab first. PAPER is a backup source for help.

Communicate teacher's expectations clearly. PAPER tutors can only help correctly if they know what a user's teachers expect. If a teacher expects his or her students to solve math problems or write essays in a very specific way, it's up to the students to inform their tutors. Otherwise, one may still get a bad grade even with PAPER's help.

LOVE TO READ?



The Sora app can be found on **BeachPort** (LBHS website). The Sora app was designed around the modern student reading experience. It empowers students to discover and enjoy ebooks and audiobooks from their school, for both leisure and class-assigned reading.

AVAILABLE NOW!

GALE

Testing & Education Reference Center

- SAT & ACT Prep Materials AND Practice Tests
- AP Test Prep AND English & Math Skills Practice
- College Planning AND Scholarship Information

CHECK IT OUT!!
Find it on BeachPort

Looking for virtual college events or admissions meetings for LBHS students?

Go to the **LBHS CCC Canvas** page for the latest information. Updates will take place throughout the fall so check back frequently.

**AVAILABLE
NOW!**

GALE

**Testing & Education
Reference Center**

**SAT & ACT
Prep Materials
AND
Practice Tests**

**AP Test Prep
AND
English & Math
Skills Practice**

**College
Planning
AND
Scholarship
Information**

**CHECK IT OUT!!
Find it on BeachPort**



2021-2022 SAT Dates

Deadlines expire at 11:59 p.m. ET, U.S. ♦ SAT.ORG ♦ LBHS SCHOOL CODE: 051320

SAT DATE	Registration Deadline	Late Registration Deadline	Deadline for Changes
August 28, 2021	July 30, 2021	August 17, 2021 (for registrations made online or by phone)	August 17, 2021
October 2, 2021	September 3, 2021	September 21, 2021 (for registrations made online or by phone)	September 21, 2021
November 6, 2021	October 8, 2021	October 26, 2021 (for registrations made online or by phone)	October 26, 2021
December 4, 2021	November 4, 2021	November 23, 2021 (for registrations made online or by phone)	November 23, 2021
March 12, 2021	February 11, 2021	March 1, 2021 (for registrations made online or by phone)	March 1, 2022
May 7, 2022	April 8, 2022	April 26, 2022 (for registrations made online or by phone)	April 26, 2022
June 4, 2022	May 5, 2022	May 25, 2022 (for registrations made online or by phone)	May 25, 2022



NAVIGATE YOUR FUTURE

2021/2022 TEST DATES



*No test centers are scheduled in New York for the July test date.

WHEN IT COMES TO TEST PREP, WE'VE GOT YOU COVERED

ACT offers test prep programs for every learning style with live video lessons, interactive practice questions, full-length practice tests, and on-demand tutorials.

Explore your test prep options, including a free practice test, at act.org/prep.

Register online
at act.org/bts



WHY TAKE THE ACT TEST?

1

EXPAND YOUR OPTIONS

Taking the ACT test can help you on your way to your dream school. Plus, the ACT offers you the opportunity to be identified and recruited by colleges.

2

PAY FOR COLLEGE

Students with an ACT score qualify for more scholarships because many colleges require scores for merit-based awards. Without one, you could miss out on thousands of dollars.

3

PLAN YOUR FUTURE

ACT scores do more than get you into college. Your results include a college and career planning section that directs you toward the best path to success.

4

STAND OUT

ACT scores can help you stand out in a crowded field of applicants with similar high school grades.

5

SECURE A SUPERScore

When you take the ACT more than once, you can average your best section scores for an ACT Superscore.



FEE WAIVERS

Ask your counselor if you qualify for a fee waiver to take the ACT test for free. Fee waivers cover the basic registration and late fees for up to 4 national tests and provide free access to The Official ACT® Self-Paced Course, Powered by Kaplan®.

Register online at act.org/bts





Family & Friends

Interests

College

The Step-by-Step Guide to College Planning



Earn + \$22k/yr

College matters — for life

A college education is a gateway to success in today's knowledge-based, global economy.

College graduates earn an average of \$22,000 more per year than high school graduates.

College is more than a classroom. It's an important opportunity to learn and grow as a person, gaining independence, confidence and life skills.



The website to help your student plan for college

BigFuture™ by the College Board is a free, comprehensive website that guides families — step by step — in preparing for, finding and enrolling in college. At bigfuture.org, you can:

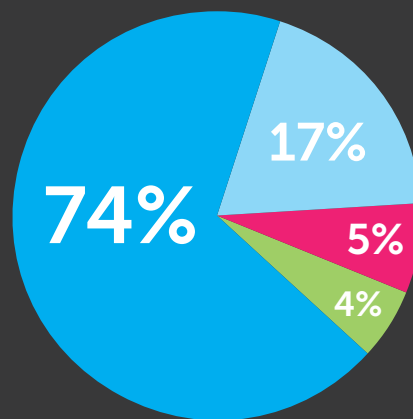
- Use intelligent search-and-match tools and informative videos to find colleges that are a good fit for your student;
- Learn how families like yours have paid for college; and
- Create a personalized plan for college so you and your student know what to do and when to do it.

Help your student navigate the steps to college using BigFuture.

Financial aid comes from many sources:

Federal government grants, loans and other aid: **74%**
College grants and scholarships: **17%**
State government grants and scholarships: **5%**
Private employer grants and scholarships: **4%**

Be sure to take advantage of federal- and college-provided funds that add up to 91% of all aid.



BigFuture guides students as they find, afford and enroll in a college that's a good fit for them.



Using BigFuture™

The College Board developed BigFuture in collaboration with parents, students and educators to make the college planning process easier and less overwhelming. Students can:

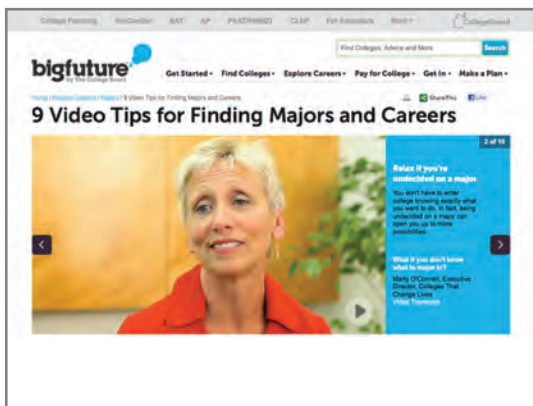
- **Start with a focus on themselves;** their interests, what and where they want to study, how much financial assistance they think they'll need and other important considerations;
- **Search for colleges** and easily compare them based on factors ranging from majors to size and location;
- **Watch videos from real students** who explain what they did to get into college and what their college experience has been like;
- **Hear from education professionals** who provide the inside story on preparing for and getting into college;
- **Learn about the different kinds of colleges** and how to find one that is the right fit for them;
- **Find valuable help in paying for college** by discovering what goes into college costs and how to find financing; and
- **Build a personalized plan** for realizing their goals and getting into a college that meets their needs.

BigFuture will make you feel more confident about your student's ability to go to college. And it will give you the tools you need to help your student get there.

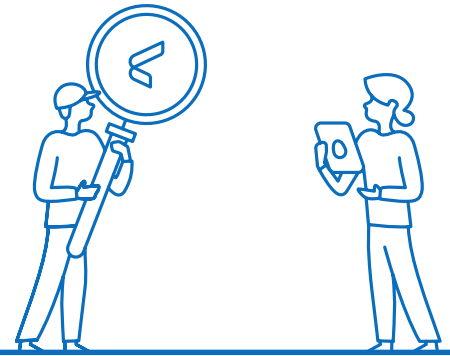
Get free expert guidance in helping your student go to college. Go to bigfuture.org.



Search and compare colleges.



Hear the inside story from educators.



What is Common App

Common App is a non-profit college access organization that helps students apply to college every year. Common App's free college application tool is designed to make applying to college faster and easier. With Common App you only need to use one system to apply to multiple colleges and universities. There are two main parts you fill out: a set of common questions and each college's own specific questions. The best part is you only have to fill out the common questions one time!

Common App is a place for you to learn about the college admissions process, understand how to plan and apply to college, and discover all that different colleges have to offer. It's a hub of information that can guide you through each step of the application journey. It's a resource that connects you with financial aid and scholarship opportunities.

Whatever questions you might have, we're here to help

Application guides to give you step-by-step instructions on completing your application.

A **college roadmap** designed to guide you toward your next destination — no matter where you start.

An **application dictionary** to help you understand the terminology related to college applications.

A **library of FAQs** to answer any question you may have, and a support team that's available **24/7/365**.

What's next

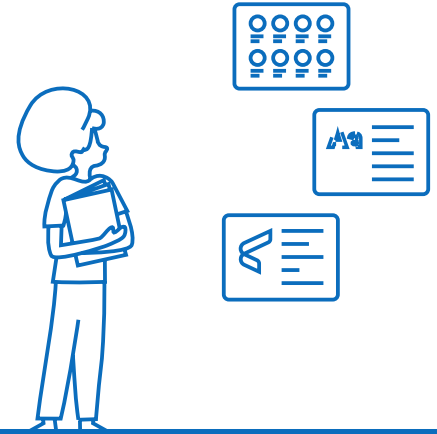
Visit commonapp.org to create your Common App account and start exploring colleges.

Common App at a glance

- Over 900 colleges and universities use Common App
- 225+ public colleges and universities
- 60+ international universities in 18 countries
- 12 HBCUs
- More than 400+ without app fee
- Nearly 730+ test optional/flexible

How the first-year Common App works

A quickstart guide for students using the first-year Common App.



1 Add colleges

Get started by adding colleges to your list. You can find colleges to apply to in the College Search tab of your Common App account. The College Search tab also has information and links to help you research each college. Over 900 colleges use Common App! Go to commonapp.org/explore to start exploring.

2 Stay organized

Each college has its own set of specific requirements and supplements. When it comes to tracking this information and staying organized, we're here to help! Use the "Requirements Grid" and each college's "College Information" page to find this information.

To start your college application checklist, check out our "My College Requirements" worksheet at commonapp.org/ready.

3 Complete and submit

Answering all the questions in the Common App tab is a great way to start your applications. For each college you will:

- Answer college specific questions
- Invite and manage recommenders
- Complete other supplements (if applicable)

After all these sections are complete, you are ready to submit your application! Submission is simple: review, pay (if applicable), and submit.

How does my application get there?

When you submit we combine your responses from the Common App and college specific questions, as well as any supplements, into one form. Your counselor, teachers, and other recommenders complete their reports and evaluations separately.

As recommenders submit their forms, they will be sent to the college to be added to your application.

ONE OPPORTUNITY. LIMITLESS POSSIBILITIES.

If you want to play sports at an NCAA Division I or II school, start by registering for a Certification account with the NCAA Eligibility Center at eligibilitycenter.org. If you want to play Division III sports or you aren't sure where you want to compete, start by creating a Profile Page account at eligibilitycenter.org.

ACADEMIC REQUIREMENTS

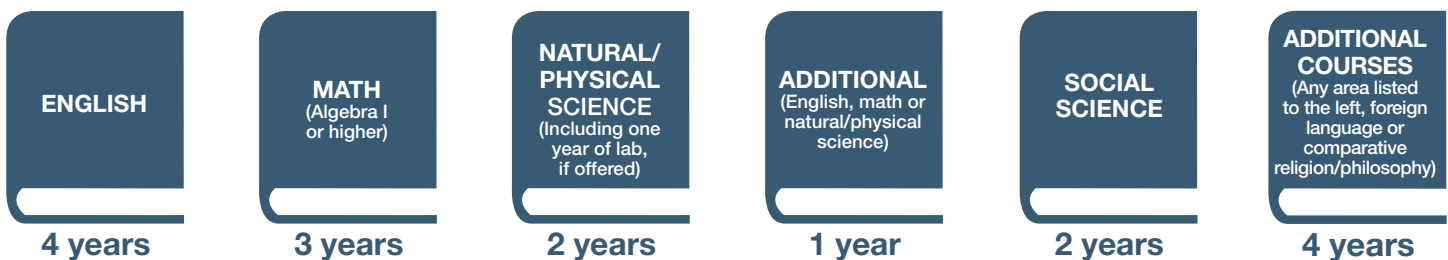
To play sports at a Division I or II school, you must graduate from high school, complete 16 NCAA-approved core courses, earn a minimum GPA and earn an SAT or ACT score that matches your core-course GPA.

CORE COURSES

Only courses that appear on your high school's list of NCAA core courses will count toward the 16 core-course requirement; visit eligibilitycenter.org/courselist for a full list of your high school's approved core courses. Complete 16 core courses in the following areas:

DIVISION I

Complete 10 NCAA core courses, including seven in English, math or natural/physical science, before your seventh semester.



DIVISION II



GRADE-POINT AVERAGE

The NCAA Eligibility Center calculates your [grade-point average](#) based only on the grades you earn in NCAA-approved core courses.

- DI requires a minimum 2.3 GPA.
- DII requires a minimum 2.2 GPA.

SLIDING SCALE

Divisions I and II use sliding scales to match test scores and GPAs to determine eligibility. The sliding scale balances your test score with your GPA. If you have a low test score, you need a higher GPA to be eligible. Find more information about sliding scales at ncaa.org/test-scores.

TEST SCORES

You may take the SAT or ACT an unlimited number of times before you enroll full time in college. Every time you register for the SAT or ACT, use the NCAA Eligibility Center code **9999** to send your scores directly to us from the testing agency. We accept official scores only from the SAT or ACT, and cannot use scores shown on your high school transcript. If you take either test more than once, the best subscore from different tests are used to give you the best possible score. More information regarding the impact of COVID-19 and test scores can be found at on.ncaa.com/COVID19_Fall_B.



HIGH SCHOOL TIMELINE

9TH GRADE



- *Start planning now!* Take the right courses and earn the best grades possible.

- Find your high school's list of NCAA-approved core courses at eligibilitycenter.org/courselist.
- Sign up for a free Profile Page account at eligibilitycenter.org for information on NCAA requirements.

10TH GRADE

REGISTER



- If you fall behind academically, ask your counselor for help finding approved courses you can take.

- Register for a Profile Page or Certification account with the NCAA Eligibility Center at eligibilitycenter.org.
- Monitor your Eligibility Center account for next steps.
- At the end of the year, ask your counselor at each high school or program you attended to upload your official transcript to your Eligibility Center account.

11TH GRADE



- Check with your counselor to make sure you are on track to complete the required number of NCAA-approved courses and graduate on time with your class.

- Take the SAT/ACT and submit your scores to the NCAA Eligibility Center using code **9999**.
- Ensure your sports participation information is correct in your Eligibility Center account.
- At the end of the year, ask your counselor at each high school or program you attended to upload your official transcript to your Eligibility Center account.

12TH GRADE



- Complete your final NCAA-approved core courses as you prepare for graduation.
- Take the SAT/ACT again, if necessary, and submit your scores to the NCAA Eligibility Center using code **9999**.

- Request your final amateurism certification beginning April 1 (fall enrollees) or Oct. 1 (winter/spring enrollees) in your Eligibility Center account at eligibilitycenter.org.
- After you graduate, ask your counselor to upload your final official transcript with proof of graduation to your Eligibility Center account.
- *Reminder:* Only students on an NCAA Division I or II school's institutional request list will receive a certification.

How to plan your high school courses to meet the 16 core-course requirement:

$$4 \times 4 = 16$$

9TH GRADE

- (1) English
- (1) Math
- (1) Science
- (1) Social Science and/or additional

4 CORE COURSES

10TH GRADE

- (1) English
- (1) Math
- (1) Science
- (1) Social Science and/or additional

4 CORE COURSES

11TH GRADE

- (1) English
- (1) Math
- (1) Science
- (1) Social Science and/or additional

4 CORE COURSES

12TH GRADE

- (1) English
- (1) Math
- (1) Science
- (1) Social Science and/or additional

4 CORE COURSES

Search Frequently Asked Questions: ncaa.org/studentfaq

Follow us: @ncaaec

@playcollegesports

@ncaaec

WICHE



ALASKA

ARIZONA

CALIFORNIA

COLORADO

HAWAI'I

IDAHO

MONTANA

NEVADA

NEW MEXICO

NORTH DAKOTA

OREGON

SOUTH DAKOTA

U.S. PACIFIC TERRITORIES &
FREELY ASSOCIATED STATES

UTAH

WASHINGTON

WYOMING

www.wiche.edu/wue

WUE

WESTERN
UNDERGRADUATE
EXCHANGE



Your ticket to
affordable out-
of-state college
in the West



2020-2021

What Is WUE?

WUE is the Western Undergraduate Exchange, a program coordinated by the Western Interstate Commission for Higher Education (WICHE). Through WUE, students in Western states may enroll in participating two-year and four-year public college programs at a reduced tuition level: up to 150 percent of the institution's regular resident tuition. In all cases, WUE tuition is considerably less than nonresident tuition. For answers to many of the commonly asked questions about WUE, visit wiche.edu/askwiche.

Which States and U.S. Territories Participate?

Resident students from the following states and U.S. Territories may participate, if they meet eligibility requirements:

Alaska	Hawai'i	Oregon
Arizona	Idaho	South Dakota
California	Montana	Utah
Colorado	Nevada	Washington
CNMI*	New Mexico	Wyoming
Guam	North Dakota	

Eligibility

Many institutions require evidence of academic performance, such as ACT/SAT test scores or high school GPA, or place other conditions on WUE enrollment. Consult the WUE website for details.

Programs Available

Virtually all undergraduate fields are available to WUE students at one or more of the participating colleges and universities. Some institutions have opened their entire curriculum on a space-available or first-come, first-served basis. Others offer only designated programs at the discounted WUE rate. To learn about the wide array of programs available, consult the WUE Savings Finder at wuesavingsfinder.wiche.edu. For additional details, follow the links to the enrolling institutions' websites.

Application and Admission

Apply directly to the institution(s) of your choice for admission and WUE tuition status. **Mark prominently on the institution's application form that you seek admission as a WUE student.**

More Information

Information about specific programs offered through WUE can be obtained from the admissions office of participating institutions. Information about student eligibility and the operation of the program in any state may be obtained from the state contact offices listed on page four of this handout.

* Commonwealth of the Northern Mariana Islands

ALASKA

FOUR-YEAR INSTITUTIONS

University of Alaska Anchorage
University of Alaska Fairbanks
University of Alaska Southeast

Note: Check with UAA to confirm which branch campuses participate.

ARIZONA

TWO-YEAR INSTITUTIONS

Arizona Western College
Central Arizona College
Chandler-Gilbert Community College
Cochise College
Coconino Community College
Eastern Arizona College
Estrella Mountain Community College
Gateway Community College
Glendale Community College
Mesa Community College
Mohave Community College
Northland Pioneer College
Paradise Valley Community College
Phoenix College
Pima Community College
Rio Salado College
Scottsdale Community College
South Mountain Community College
Yavapai College

FOUR-YEAR INSTITUTIONS

Arizona State University, Downtown Campus
Arizona State University, Polytechnic Campus
Arizona State University, West Campus
Northern Arizona University
University of Arizona
University of Arizona Sierra Vista

CALIFORNIA

FOUR-YEAR INSTITUTIONS

California State Polytechnic University, Pomona
California State University, Bakersfield
California State University, Channel Islands
California State University, Chico
California State University, Dominguez Hills
California State University, East Bay
California State University, Maritime Academy
California State University, Northridge
California State University, Sacramento
California State University, San Bernardino
California State University, San Marcos
California State University, Stanislaus
Humboldt State University
Sonoma State University
University of California, Merced

COLORADO

TWO-YEAR INSTITUTIONS

Aims Community College
Arapahoe Community College
Colorado Mountain College
Colorado Northwestern Community College
Community College of Aurora
Community College of Denver
Front Range Community College
Lamar Community College
Morgan Community College
Northeastern Junior College
Otero Junior College
Pikes Peak Community College
Pueblo Community College
Red Rocks Community College
Trinidad State Junior College

FOUR-YEAR INSTITUTIONS

Adams State University
Colorado Mesa University
Colorado State University
Colorado State University, Pueblo
Fort Lewis College
Metropolitan State University of Denver
University of Colorado at Colorado Springs
University of Colorado Denver
University of Northern Colorado
Western Colorado University

COMMONWEALTH OF THE NORTHERN MARIANA ISLANDS

TWO-YEAR INSTITUTION

Northern Marianas College

GUAM

FOUR-YEAR INSTITUTION

University of Guam

HAWAI'I

FOUR-YEAR INSTITUTIONS

University of Hawai'i at Hilo
University of Hawai'i at Mānoa
University of Hawai'i Maui College
University of Hawai'i - West Oahu

IDAHO

TWO-YEAR INSTITUTIONS

College of Southern Idaho
North Idaho College

FOUR-YEAR INSTITUTIONS

Boise State University
Idaho State University
Lewis-Clark State College
University of Idaho

MONTANA

TWO-YEAR INSTITUTIONS

Dawson Community College
Flathead Valley Community College
Great Falls College Montana State University
Helena College University of Montana
Highlands College of Montana Tech
Miles Community College

FOUR-YEAR INSTITUTIONS

Montana State University - Billings
Montana State University - Bozeman
Montana State University - Northern
Montana Tech of the University of Montana
The University of Montana
The University of Montana - Western

NEVADA

TWO-YEAR INSTITUTIONS

College of Southern Nevada
Great Basin College
Truckee Meadows Community College
Western Nevada College

FOUR-YEAR INSTITUTIONS

Nevada State College
University of Nevada, Las Vegas
University of Nevada, Reno

NEW MEXICO

TWO-YEAR INSTITUTIONS

Eastern New Mexico University - Roswell
New Mexico Junior College
New Mexico Military Institute
New Mexico State University - Alamosordo
Santa Fe Community College

FOUR-YEAR INSTITUTIONS

Eastern New Mexico University - Portales
New Mexico Highlands University
New Mexico Institute of Mining and Technology
New Mexico State University
Northern New Mexico College
The University of New Mexico
Western New Mexico University

NORTH DAKOTA

TWO-YEAR INSTITUTIONS

Bismarck State College
Dakota College at Bottineau
Lake Region State College
North Dakota State College of Science
Williston State College

FOUR-YEAR INSTITUTIONS

Dickinson State University
Mayville State University
Minot State University
North Dakota State University
University of North Dakota
Valley City State University

OREGON

FOUR-YEAR INSTITUTIONS

Eastern Oregon University
Oregon Institute of Technology
Oregon State University
Portland State University
Southern Oregon University
Western Oregon University



SOUTH DAKOTA

Associate degree programs, available at most South Dakota universities, are open to WUE students, as are baccalaureate programs.

FOUR-YEAR INSTITUTIONS

Black Hills State University
Dakota State University
Northern State University
South Dakota School of Mines & Technology
South Dakota State University
University of South Dakota

UTAH

TWO-YEAR INSTITUTIONS

Salt Lake Community College
Snow College
Utah State University Eastern

FOUR-YEAR INSTITUTIONS

Dixie State University
Southern Utah University
The University of Utah
Utah State University
Utah Valley University
Weber State University

WASHINGTON

TWO-YEAR INSTITUTIONS

Spokane Community College
Spokane Falls Community College

FOUR-YEAR INSTITUTIONS

Central Washington University
Eastern Washington University
The Evergreen State College
Washington State University, Everett
Washington State University, Pullman
Washington State University, Tri-Cities
Washington State University, Vancouver
Western Washington University

WYOMING

TWO-YEAR INSTITUTIONS

Casper College
Central Wyoming College
Eastern Wyoming College
Gillette College
Laramie County Community College
Northwest College
Sheridan College
Western Wyoming Community College

FOUR-YEAR INSTITUTION

University of Wyoming

WUE Contacts in Participating States and U.S. Territories

If you're interested in applying as a WUE student, go to www.wiche.edu/wue and click on the database. The profiles of our participating institutions will give you their eligibility requirements, application deadlines, majors available at the WUE rate, and more. If you still have questions, you may want to call the people who oversee WUE applications at the institution where you want to apply – most often you will need to talk with someone in the office of admissions. We strongly encourage you to read our "ASK WICHE" WUE FAQ; it will answer most of your general questions about WUE.

WUE applicants must prove that they are a resident of one of the WICHE member states to the enrolling institution's satisfaction. If you have already worked with the institution's residency office and still need assistance verifying your home state residency status, your state office may be able to assist. State office contact information is listed below.

Alaska

WICHE Student Exchange Program
Alaska Commission on Postsecondary Education
Tel: 907.465.6685

Arizona

WICHE Student Exchange Program
Arizona Board of Regents
Tel: 602.229.2500

California

Office of the Chancellor
The California State University System
Tel: 562.951.4715

Colorado

WICHE Student Exchange Program
Colorado Department of Higher Education
Tel: 303.862.3001

Commonwealth of the Northern Mariana Islands

WICHE Student Exchange Program
Northern Marianas College
Tel: 670.234.5498, ext. 6831

Guam

Admissions and Records Office
University of Guam
Tel: 671.735.2208

Hawai'i

WICHE Student Exchange Program
University of Hawai'i at Mānoa
Admissions and Records Office
Tel: 808.956.8975 or 800.823.9771

Idaho

WICHE Student Exchange Program
Idaho Board of Education
Tel: 208.332.1574

Montana

WICHE Student Exchange Program
Montana University System
Office of the Commission on Higher Education
Tel: 406.444.0322

Nevada

WICHE Student Exchange Program
Nevada System of Higher Education
Tel: 775.687.0991

New Mexico

WICHE Student Exchange Program
New Mexico Higher Education Department
Tel: 505.476.8412

North Dakota

WICHE Student Exchange Program
North Dakota University System
Tel: 701.328.2964



Oregon

Academic and Student Affairs Policy Specialist
Oregon Higher Education Coordinating Commission
Tel: 503.947.5925

South Dakota

WICHE Student Exchange Program
South Dakota Board of Regents
Tel: 605.773.3455

Utah

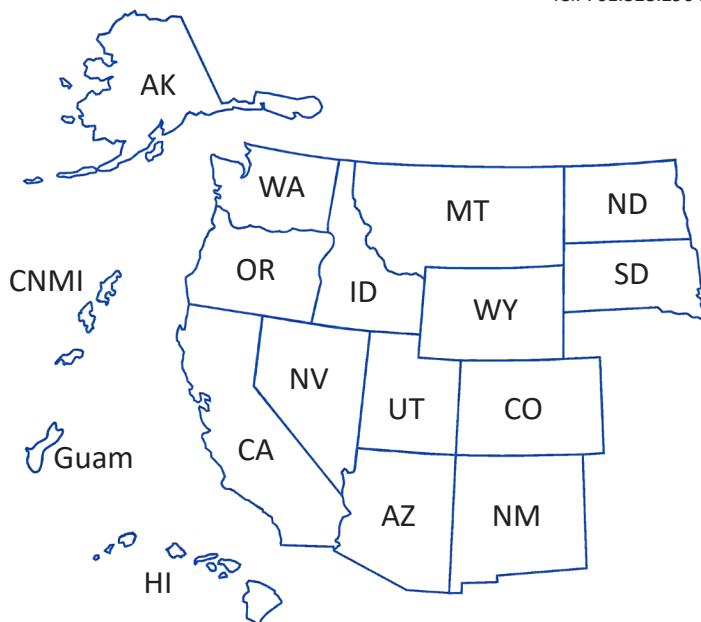
WICHE Student Exchange Program
Utah Board of Regents
Tel: 801.321.7104

Washington

WICHE Student Exchange Program
Washington Student Achievement Council
Tel: 360.753.7846

Wyoming

WICHE Student Exchange Program
University of Wyoming
Tel: 307.766.3499



12/2019



www.wiche.edu/wue

General questions may be addressed to info-sep@wiche.edu, or call us at 303.541.0270.