

PARENT/GUARDIAN REOPENING MEETING AND DISCUSSION

La Honda STEAM Academy

January 2021



CONTENTS OF THIS PRESENTATION

Here's what information you'll find in this presentation:

- Arrival and Departure, Bussing
- Visitors on Campus
- Bathroom Procedures
- Recess
- Lunch
- Classroom Materials & Cross Contamination
- Classroom Sanitization
- Face coverings
- Students' Instructional Model
- Resource Links

CURRENT STATUS OF REOPENING

SANTA BARBARA COUNTY PUBLIC SCHOOLS REOPENING STATUS (LAST UPDATED DEC. 7)

Note: As of 12/7, Santa Barbara County, as part of the Southern California Region is under a Stay at Home order for three weeks. Schools that were open may remain open. However, no new elementary waiver applications are being considered by Public Health during this time. (<https://www.sbceo.org/>)

Waivers *may* be requested by the LUSD School Board once the stay at home order has been lifted.

Once in the RED tier for a minimum of 14 days, schools *may* resume to the hybrid model of in-person instruction.

CALIFORNIA COVID-19 TIERS

Source: CA Department of Public Health

TIER 1) WIDESPREAD OR PURPLE

WHAT IT MEANS: Many nonessential indoor business operations are closed

CRITERIA:

of new daily cases: More than 7 per 100K people
Positivity rate: More than 8%

TIER 3) MODERATE OR ORANGE

WHAT IT MEANS: Some indoor business operations are open with modifications

CRITERIA:

of new daily cases: 1-3.9 per 100K people
Positivity rate: Between 2% and 4.9%

TIER 2) SUBSTANTIAL OR RED

WHAT IT MEANS: Some nonessential indoor business operations are closed

CRITERIA:

of new daily cases: 4-7 per 100K people
Positivity rate: Between 5% and 8%

TIER 4) MINIMAL OR YELLOW

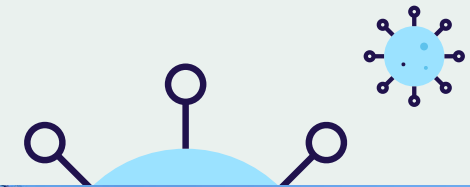
WHAT IT MEANS: Most indoor business operations are open with modifications

CRITERIA:

of new daily cases: Less than 1 per 100K people
Positivity rate: Less than 2%

ARRIVAL AND DEPARTURE

Students will use two gates to enter and exit the campus. Students will be asked to socially distance while walking and will go directly to their classroom. There will be no playing outside or gathering on the blacktop prior to school beginning.



BEFORE COMING TO SCHOOL FAMILIES & STAFF MUST SELF-ATTEST

Daily Home Screening for Students

Parents: Please complete this short check each morning and report your child's information [INSERT YOUR SCHOOL REPORTING INSTRUCTIONS] in the morning before your child leaves for school.

SECTION 1: Symptoms

If your child has any of the following symptoms, that indicates a possible illness that may decrease the student's ability to learn and also put them at risk for spreading illness to others. Please check your child for these symptoms:

<input type="checkbox"/>	Temperature 100.4 degrees Fahrenheit or higher when taken by mouth
<input type="checkbox"/>	Sore throat
<input type="checkbox"/>	New uncontrolled cough that causes difficulty breathing (for students with chronic allergic/asthmatic cough, a change in their cough from baseline)
<input type="checkbox"/>	Diarrhea, vomiting, or abdominal pain
<input type="checkbox"/>	New onset of severe headache, especially with a fever

SECTION 2: Close Contact/Potential Exposure

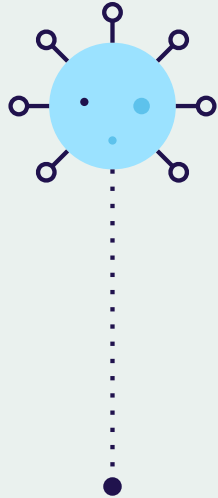
<input type="checkbox"/>	Had close contact (within 6 feet of an infected person for at least 15 minutes) with a person with confirmed COVID-19
<input type="checkbox"/>	Traveled to or lived in an area where the local, Tribal, territorial, or state health department is reporting large numbers of COVID-19 cases as described in the Community Mitigation Framework
<input type="checkbox"/>	Live in areas of high community transmission (as described in the Community Mitigation Framework) while the school remains open

“ CDC does not currently recommend that universal symptom screenings be conducted at schools.”



CS 316255-0 07/29/2020

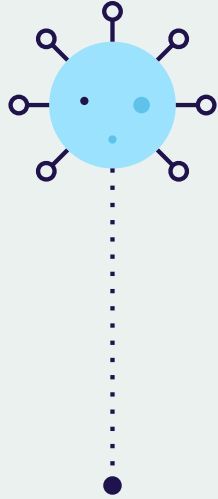
cdc.gov/coronavirus



CAMPUS VISITORS

Due to COVID-19 & the recommendations of the Santa Barbara Public Health Office, LUSD must limit campus visitors for student and staff safety:

- Sites should identify where parents/visitors can check in with the office staff
- Visitors will be provided an area to wait for their child while being able to maintain social distancing recommendations
- Visitors should not be allowed access to the main areas of campus while school is in session.



BUSSING

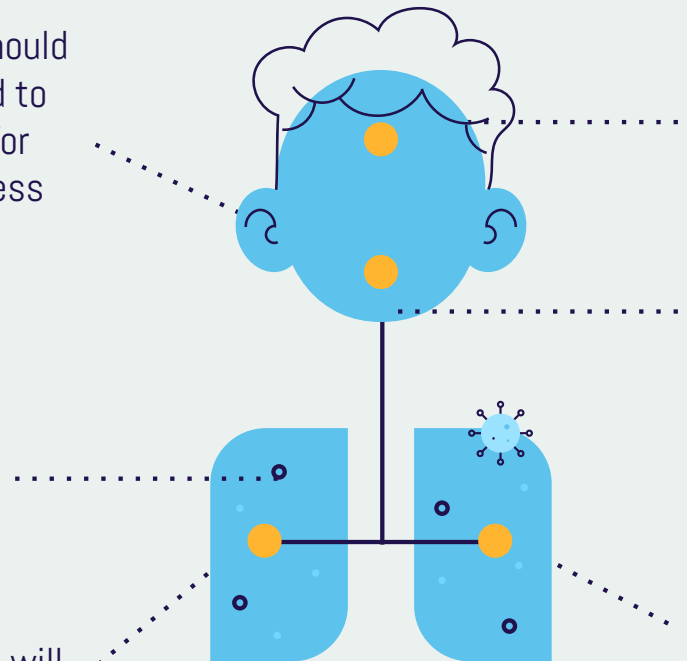
- Students who exhibit symptoms @ the bus stop will remain 6' away from attendant who will remain with them until a family member comes to pick them up
- Masks will be provided to all students as they board the bus (should they not have one)
- Bus attendant will have gloves, masks, and suit available for use while waiting for student to be picked up.

ATTENDING SCHOOL

Parent or caregivers should be strongly encouraged to monitor their children for signs of infectious illness every day.

Masks will be provided immediately to the student (should they not have one).

PPE when caring for a potential positive case will be provided



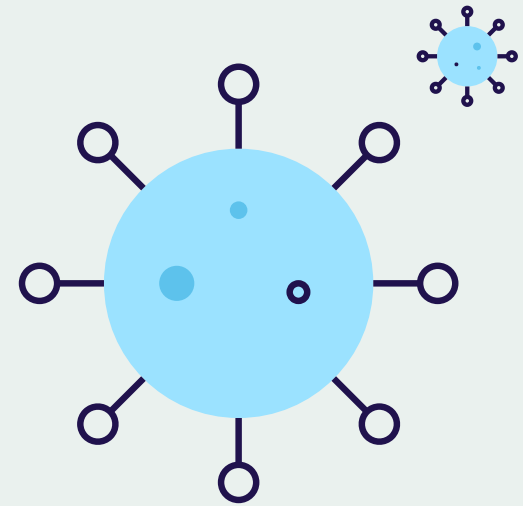
CDC **does not** currently recommended universal symptom screenings (screening all students K-12) be conducted by school

Students who are sick should not attend school in-person.

Supervising staff will have gloves, masks, and suit (if available) for use while waiting for student/staff who has exhibited signs of COVID to be picked up

BATHROOM USE

Students will be permitted to use the restroom as needed. Staff will monitor student use and no more than 2 students will use the restroom at a time. Students will have designated restrooms that are nearest to their classroom to avoid cross contamination. All restrooms will be cleaned throughout the day by our custodial staff.



SANITIZING

Cleaning and disinfecting are part of LUSD's broad approach to preventing infectious diseases in our schools. Below are some steps LUSD is taking to slow the spread of COVID-19:

- LUSD Custodial staff will wear disposable gloves for all tasks in the cleaning process, including handling trash.
- Hands will be cleaned with soap and water for 20 seconds immediately following glove removal.

According to the CDC, current evidence suggests that novel coronavirus may remain viable for hours to days on surfaces.

- LUSD Custodial staff will clean and disinfect surfaces and objects that are touched often by students and staff.
 - Procedures include: **daily cleaning and sanitizing of surfaces and objects such as desks, light switches, countertops, doorknobs, sinks, and faucet handles.**
 - For this process, LUSD custodians use: **EPA-registered disinfectants that are appropriate for surfaces. Some of these products include Alpha HP, Virex, or a mixture containing bleach.** Custodial staff will follow label directions on cleaning and disinfectant products.
 - Toilets, urinals, sinks, fixtures, and doorknobs located in LUSD restrooms will be cleaned and disinfected with the use of a Kaivac or similar no-touch cleaning systems. These surfaces receive an application of cleaner disinfectant in a low-pressure spray and are then rinsed with fresh, clean water before the floor is vacuumed dry, completely removing soils, moisture, and contaminants from all surfaces.
 - In addition to other trainings, all LUSD Custodial staff are required to successfully complete the SB SIPE Antimicrobial and the COVID19 Procedures safety training modules

All classrooms will be sanitized in between each cohort. This is reflected in the schedules and the time between each cohort.



CLASSROOMS

- **All classrooms will be sanitized in between each cohort or class. This is reflected in the schedules and the time between each cohort.**
- Classrooms with sinks have accompanying soap dispensers that will be stocked with EPA-registered antibacterial soap.
- Frequently touched surfaces (door handles, light switches, sink handles, student desks) in classrooms will be cleaned and sanitized with a fogger and/or traditional sanitizing methods before a new group of students enters the class.
- Classroom seating will maximize distance between students.
- Classrooms that are equipped with windows will have a minimum of one window open while the class is occupied.
- Students will not be sharing materials while in class
- Current recommended ratio is 16:1
- Teachers can also teach from outdoor areas



RECESS

Classrooms will be on a staggered schedule to avoid cross contamination while on the playground. Students will be encouraged to play in designated areas with activities that will limit their physical contact with one another. Each classroom will have their own play equipment (balls, jump ropes, hula hoops, etc.).



LUNCH

Lunches will continue to be provided to all students. The lunch schedule will be shared with families, regardless of the chosen instructional model, all students will have access to receiving breakfast and lunches as needed.

When students are in-person for the hybrid model of instruction, breakfast/lunches will be given to students as they leave campus at dismissal time.



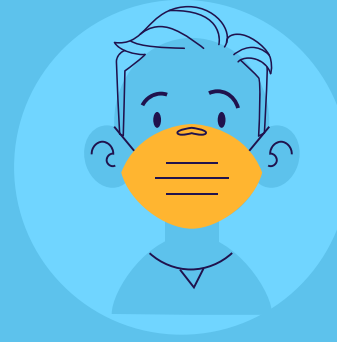
TYPES OF PPE



FOR STAFF

Face Coverings
(masks/shields)

(N95 masks, cloth face
coverings, face shields)



FOR STUDENTS Face Masks

Age	Face Covering Requirement
Under 2 years old	No
2 years old - 2nd grade	Strongly encouraged
3rd grade- High School	Yes, Unless exempt

FACE COVERINGS- STUDENTS

- LUSD strongly encourages the use of masks to minimize the potential spread of COVID-19 by asymptomatic carriers.
- LUSD will provide masks for student use in grades 3rd and higher.
- LUSD will launder the masks.
- Masks will be provided for use during the school day and remain on the school grounds so students do not need to remember to bring daily (except for those that ride the bus).
- For students who ride the bus, masks will be distributed as they board.
- Students may choose to wear their own masks. These masks will be allowed to leave the school grounds.



POTENTIAL POSITIVE CASE

Work with school administrator(s), nurses/LVNs/Health Clerks to identify an isolation room or area to separate anyone who exhibits symptoms of COVID-19.

- Any students or staff exhibiting symptoms should immediately be required to wear a face covering and be required to wait in an isolation area until they can be transported home or to a healthcare facility, as soon as practicable.
- Establish procedures to arrange for safe transport home or to a healthcare facility, as appropriate, when an individual is exhibiting COVID-19 symptoms:
 - o Fever
 - o Cough
 - o Shortness of breath or difficulty breathing
 - o Chills
 - o Repeated shaking with chills
 - o Muscle pain
 - o Headache
 - o Sore throat
 - o New loss of taste or smell



CONTACT TRACING AND DISINFECTION

Notify District officials - who will notify SB County Public Health. District Officials will provide guidance on notifying staff and all families of any positive case of COVID-19 while maintaining confidentiality, as required by state and federal laws in consultation with SB County Public Health.

- Upon notification of a positive, or presumed-positive case, contact tracing will begin and all staff who may have had contact will be notified. All LUSD employees will also be notified.
- Close off areas used by any sick person and do not use before cleaning and disinfection. To reduce risk of exposure, wait 24 hours before you clean and disinfect. If it is not possible to wait 24 hours, wait as long as practicable.
- Advise sick staff members and students not to return until they have met CDC criteria to discontinue home isolation, including no fever, symptoms have improved and 14 days since symptoms first appeared.

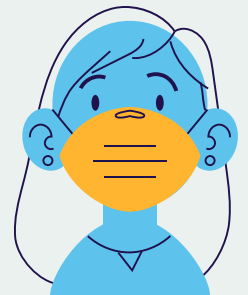
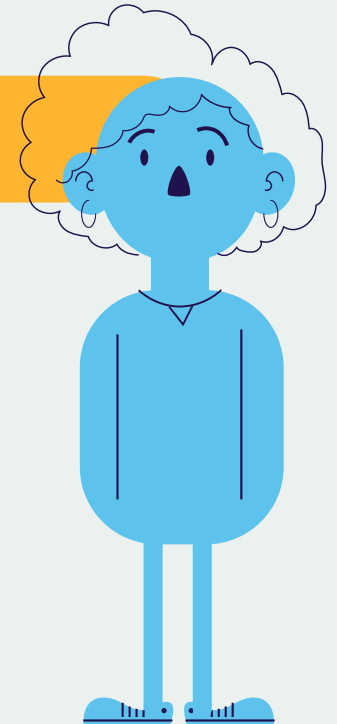
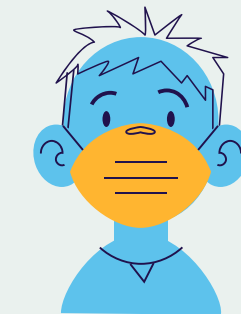
INSTRUCTIONAL MINUTES (REQUIREMENTS)

Minimum instructional minutes (asynchronous and synchronous combined)

TK/K- 180 minutes daily

Grades 1-3- 230 minutes daily

4-6- 240 minutes daily



INSTRUCTIONAL MODELS

HYBRID MODEL-

Monday/Tuesday Cohort

Thursday/Friday Cohort

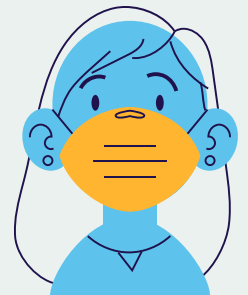
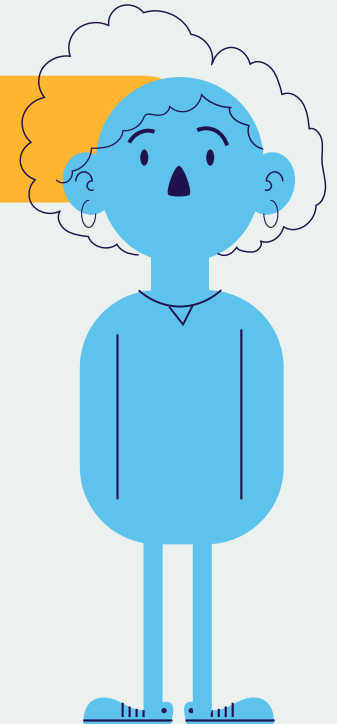
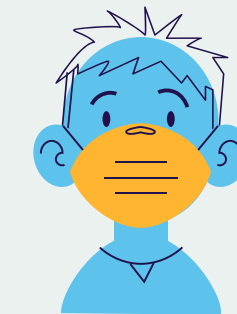
(maximum class size is 16:1)

Approximate class time will be 8:00AM-12:00PM, with additional instruction provided through distance learning and asynchronous work

100% DISTANCE/VIRTUAL LEARNING- Continue with the same instructional model

INDEPENDENT STUDY

Cohorts- Sites have worked to keep families together. This includes elementary, middle and high school students and working to ensure they attend school on the same days of the week



VIDEOS FOR STAFF AND FAMILIES

LUSD Transportation: <https://youtu.be/qHHqcr2dprk>

LUSD Food Services: <https://youtu.be/WTsYeEbVDN0>

LUSD Maintenance & Operations: <https://youtu.be/i95B9hBdCtc>

LUSD Health Services:

https://docs.google.com/presentation/d/1PVshGtKBppT04nPP-fHRKU8U-cCTf6_bAJuDBhXvjw0/edit?usp=sharing

VIDEOS FOR STAFF AND FAMILIES

LUSD Main District webpage: <https://www.lusd.org>

La Honda webpage: <https://lahondaelementary.lusd.org>

- *Please check under "Important Notices" for site specific videos for students.*

La Honda STEAM Academy contact information:

(805) 742-2300

Jessica Becerra, Principal

becerra.jessica@lusd.org