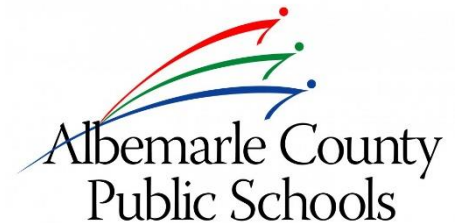


WOODBROOK ELEMENTARY

Addition, Renovation, & Modernization

COMMUNITY MEETING

FEBRUARY 10, 2016



Agenda

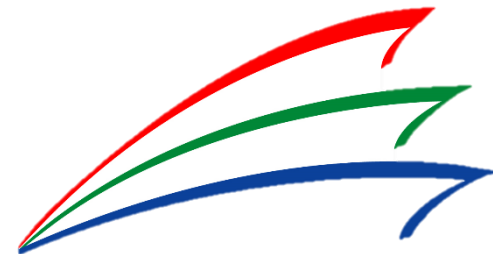
Background Information

- Woodbrook Elementary
- Capital Improvement Program (CIP)

Project Information

- History
- Scope

Next Steps





Woodbrook Elementary School

BACKGROUND INFORMATION

Facility Information



Built in 1966

50,366 square feet

12.0 acre site

1997 Addition added 9 classrooms + media center

Grade Level History

1966: Opened with grades 1-5

1973: Kindergarten class was added

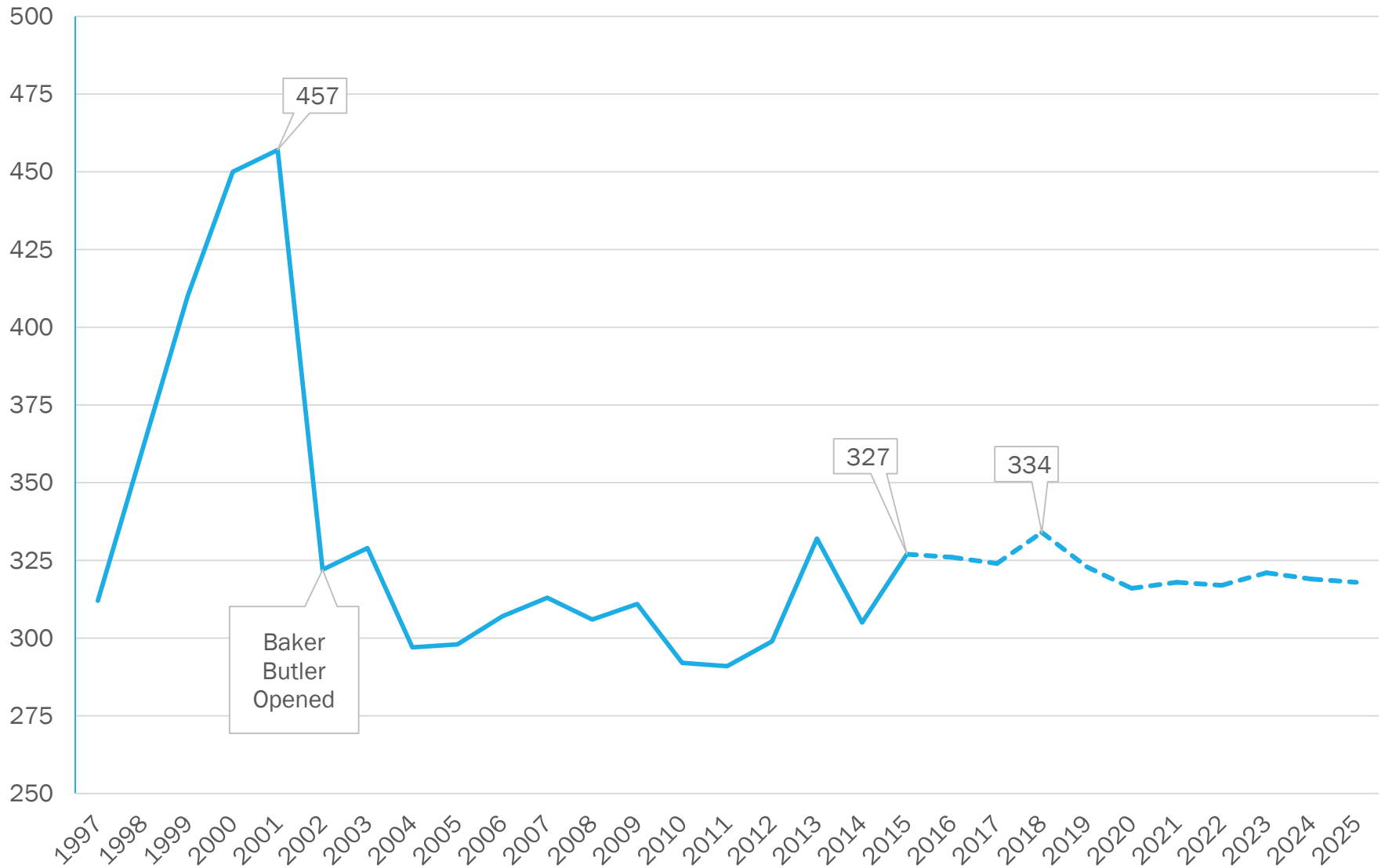
1975: Housed grades K-6

2003: Bright Stars preschool program added

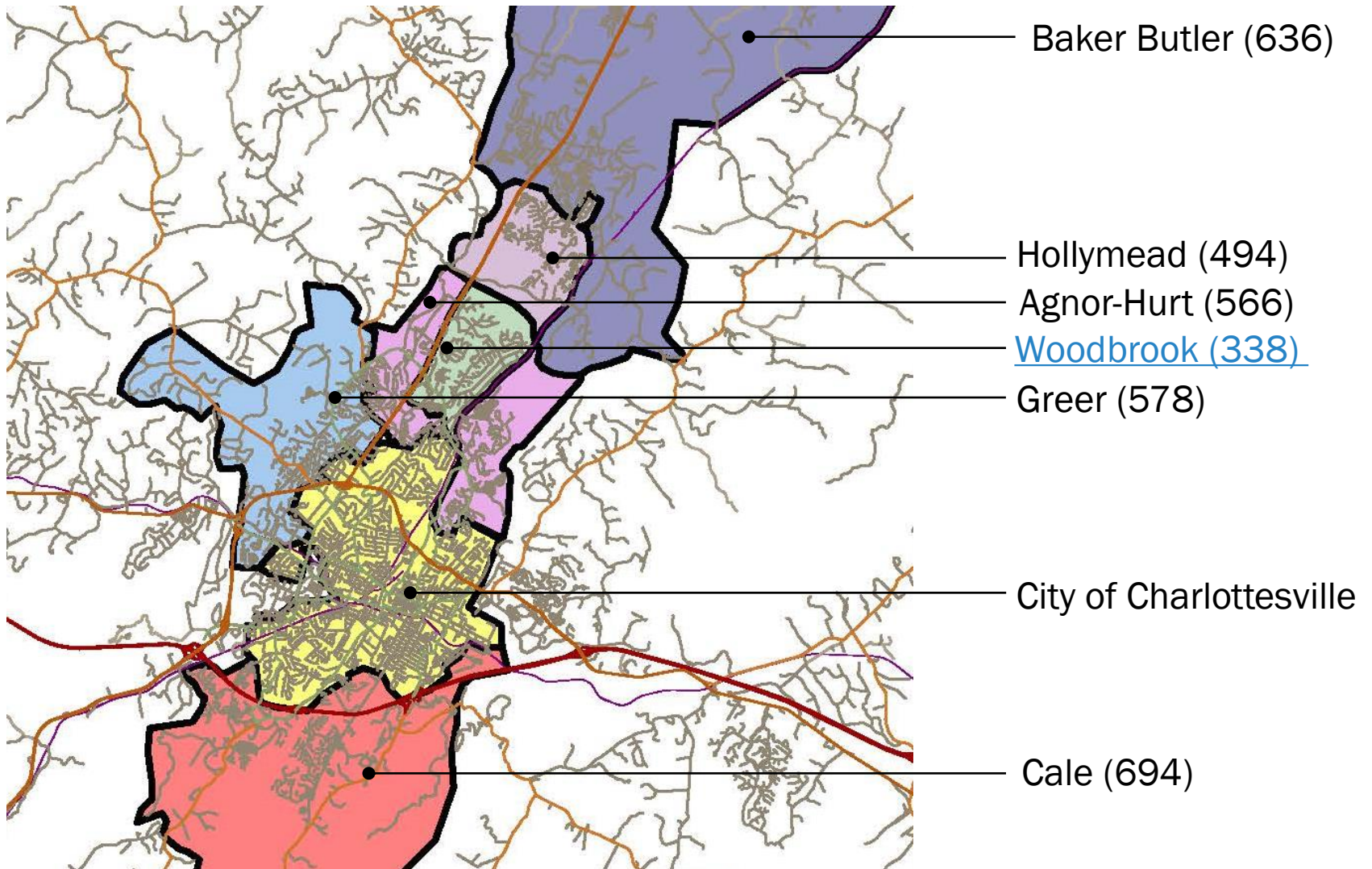
2010: Preschool Handicapped program added

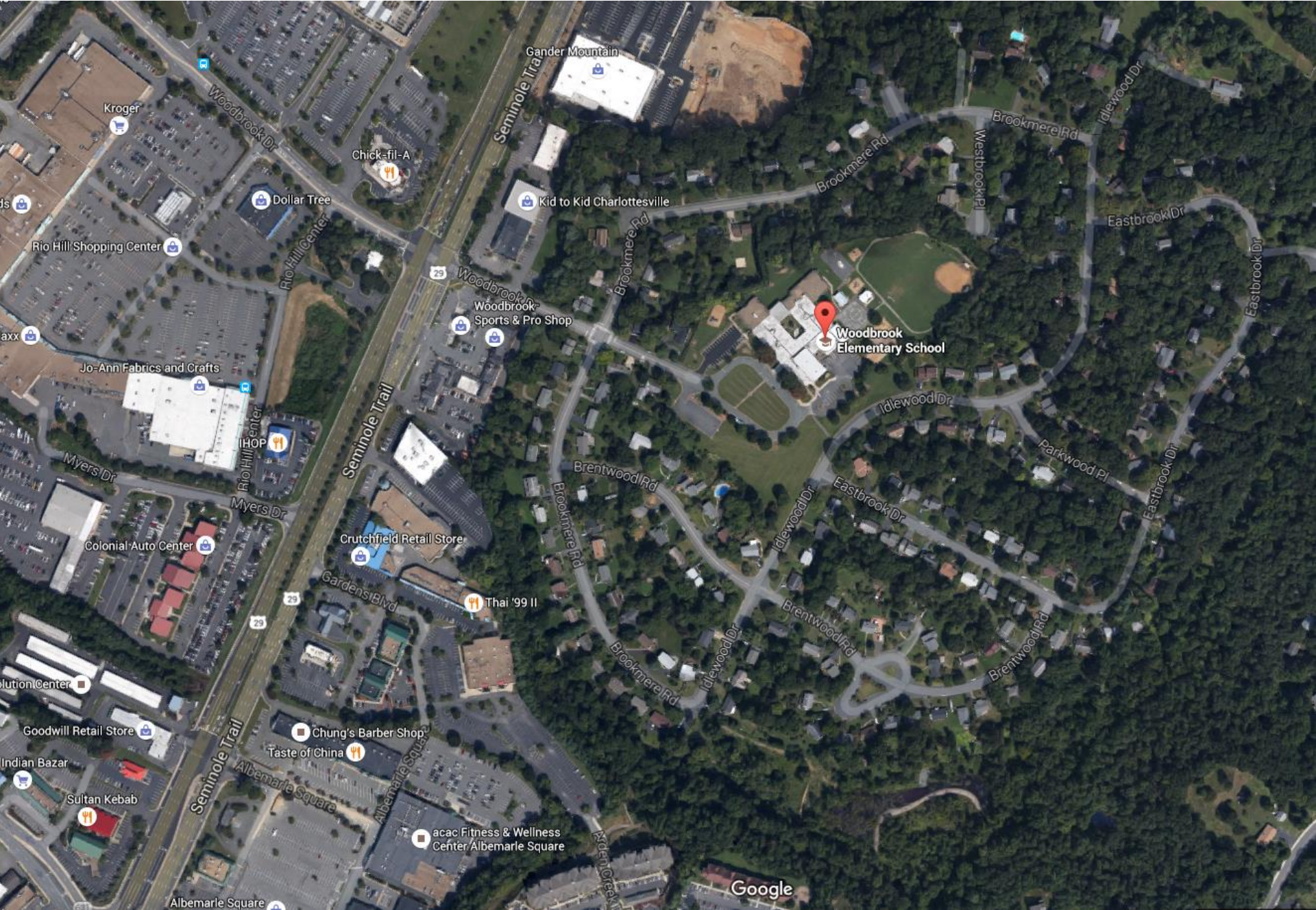
Current: Grades PreK- 5

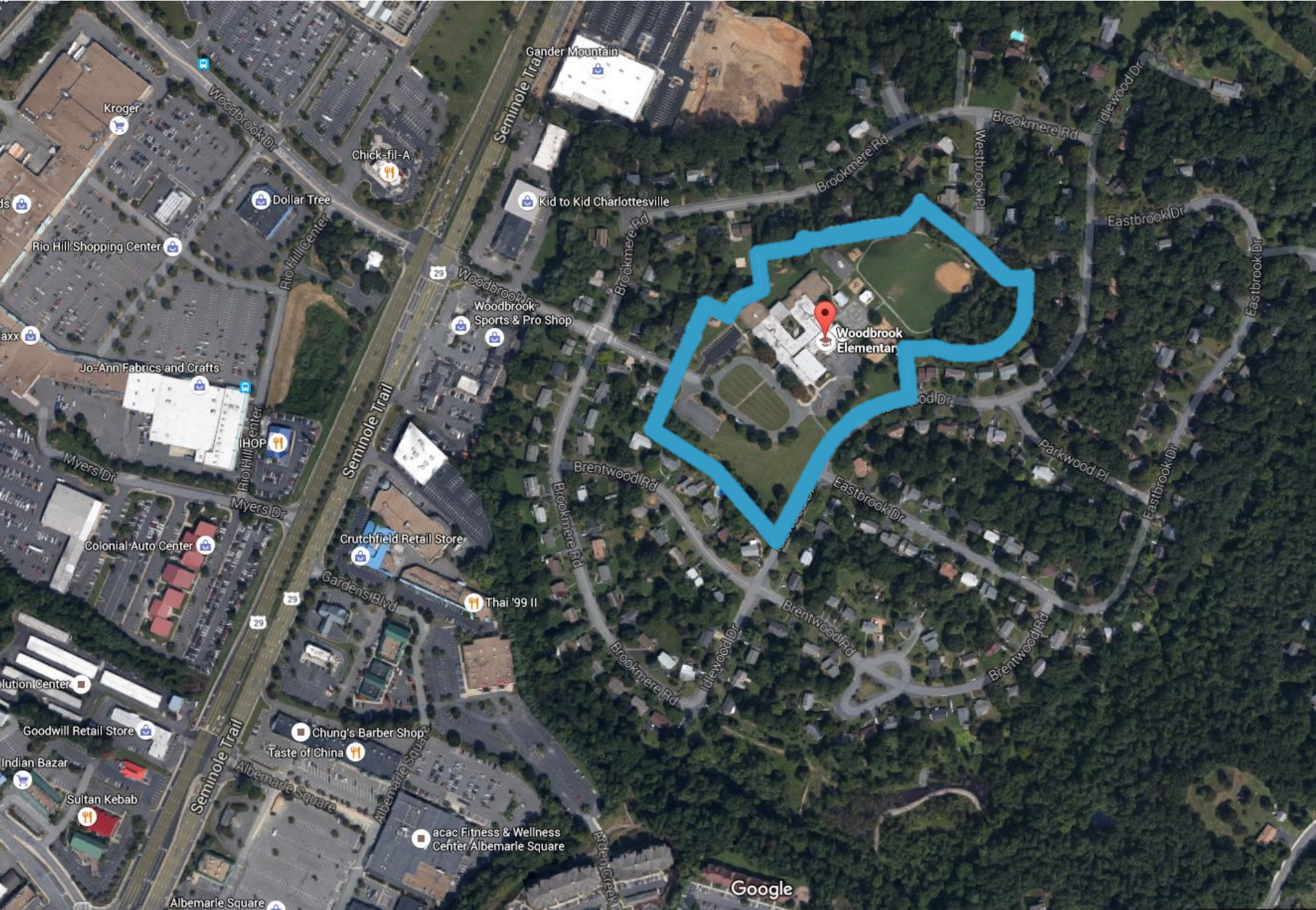
Woodbrook K-5 Enrollment



Boundaries



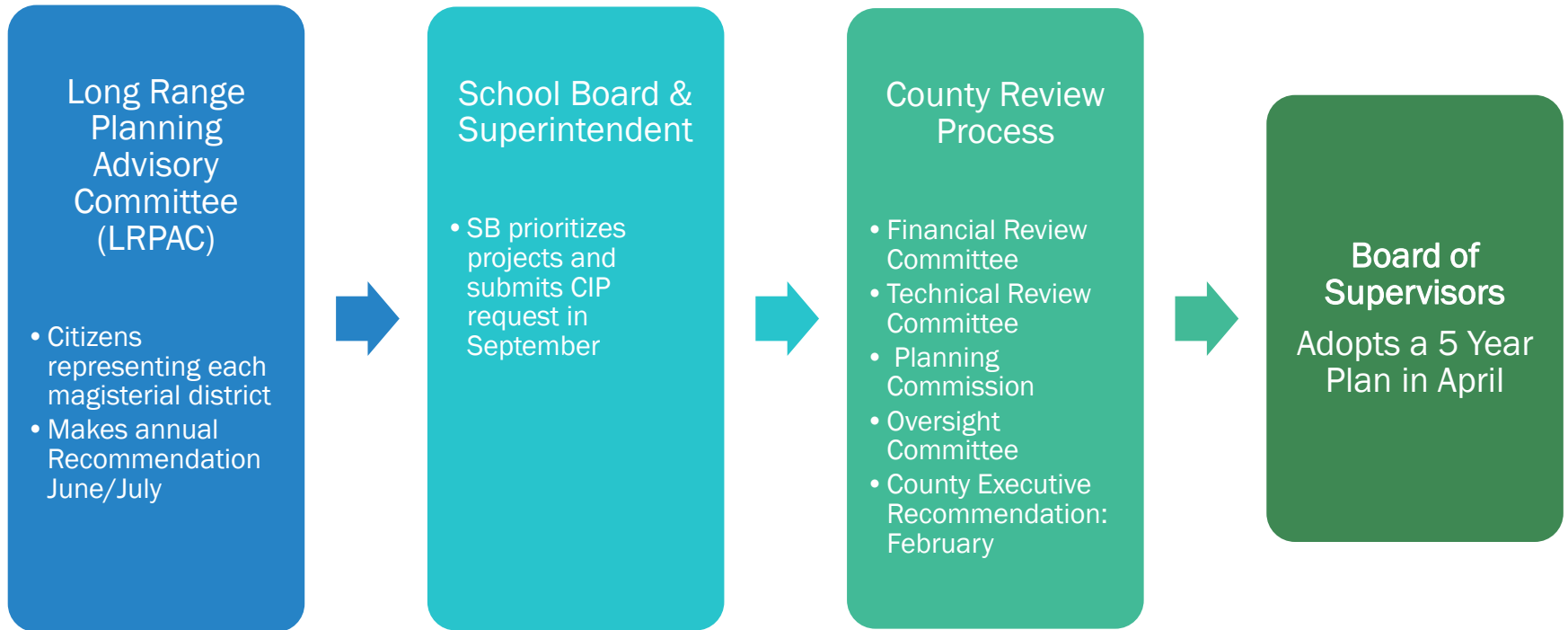




Capital Improvement Program (CIP)

BACKGROUND INFORMATION

School CIP Review Process



School Board CIP Request

RANK	Project	FISCAL YEAR					5 Year Total
		1	2	3	4	5	
		16/17	17/18	18/19	19/20	20/21	
1	Maintenance/Replacement Program	\$ 7,783,000	\$ 6,418,750	\$ 6,803,000	\$ 6,822,000	\$ 7,155,000	\$ 34,981,750
2	State Technology Grant	\$ 752,000	\$ 752,000	\$ 752,000	\$ 752,000	\$ 752,000	\$ 3,760,000
3	Instructional Technology	\$ 575,000	\$ 575,000	\$ 575,000	\$ 575,000	\$ 575,000	\$ 2,875,000
4	Administrative Technology	\$ 261,000	\$ 263,000	\$ 263,000	\$ 263,000	\$ 263,000	\$ 1,313,000
5	Telecommunications Network Upgrade	\$ 900,000			\$ 900,000		\$ 1,800,000
6	School Bus Replacement	\$ 1,200,000	\$ 1,200,000	\$ 1,200,000	\$ 1,200,000	\$ 1,200,000	\$ 6,000,000
7	Security Improvements	\$ 2,391,364	\$ 1,403,089				\$ 3,794,453
8	Red Hill Modernization	\$ 1,067,000					\$ 1,067,000
9	Learning Space Modernization (High Priority)	\$ 3,000,000	\$ 3,000,000	\$ 3,000,000	\$ 3,000,000	\$ 3,000,000	\$ 15,000,000
10	Woodbrook Addition + Modernization + Renovation	\$ 1,045,065	\$ 12,772,501				\$ 13,817,566
11	Albemarle HS Addition		\$ 2,187,220	\$ 18,140,016			\$ 20,327,236
12	Western Albemarle ESA Addition + Renovation		\$ 534,315	\$ 6,323,593			\$ 6,857,908
13	Learning Space Modernization (Part 2)		\$ 4,500,000	\$ 7,000,000	\$ 5,000,000	\$ 4,500,000	\$ 21,000,000
14	Red Hill Additions, Renovations & Site Improvements			\$ 293,540	\$ 3,697,120		\$ 3,990,660
Total		\$ 18,974,429	\$ 33,605,875	\$ 44,350,149	\$ 22,209,120	\$ 17,445,000	\$ 136,584,573

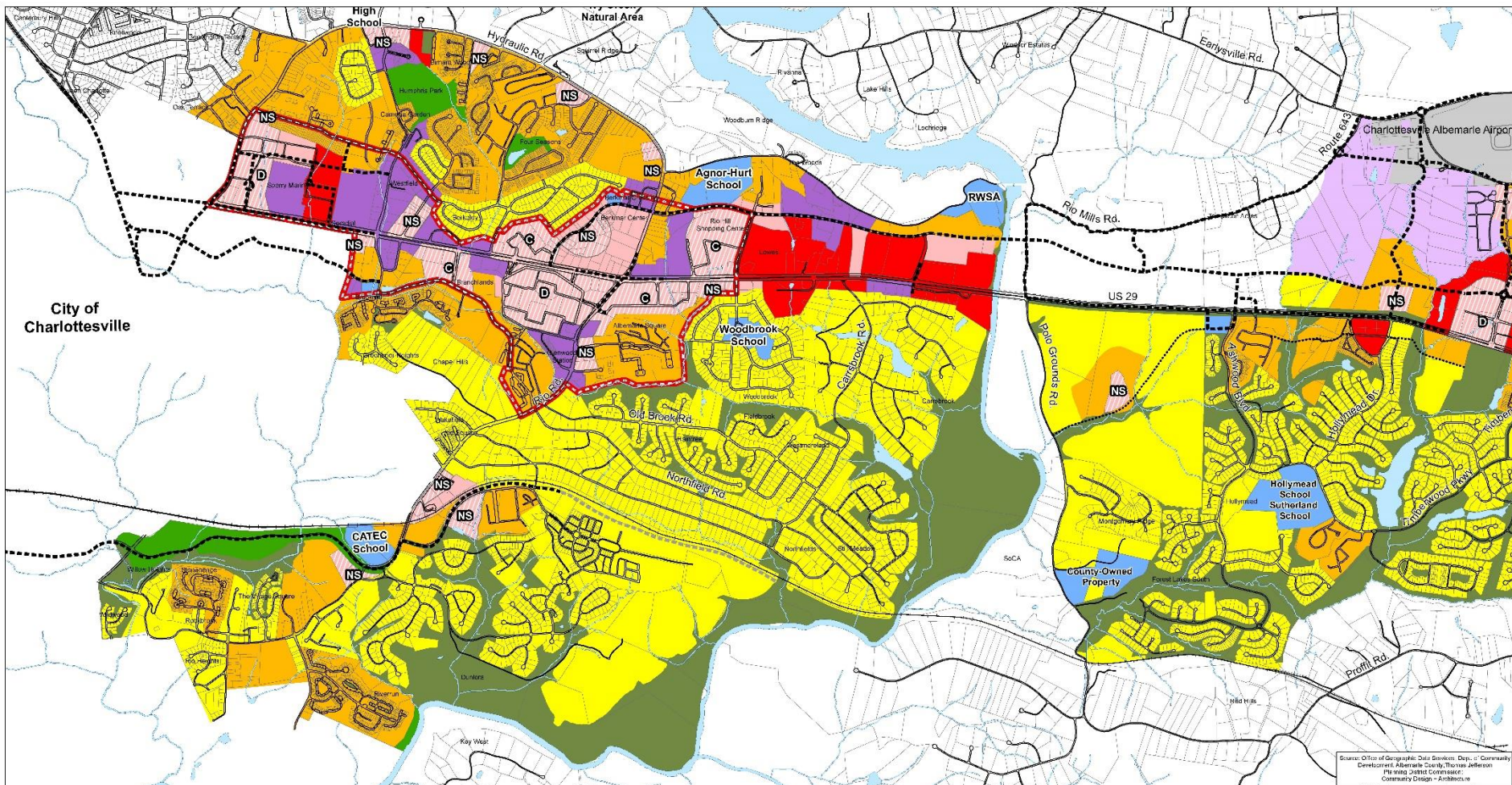
Capacity vs. Enrollment

Projected* Urban Ring Seating Surplus/Deficits

School	Building Capacity	2015/16	2016/17	2017/18	2018/19	2019/20	2020/21	# of Trailers
Agnor-Hurt	566	32	4	(6)	(9)	(11)	(28)	
Baker-Butler	636	37	32	13	2	(4)	14	
Cale	694	(7)	(5)	(25)	(12)	(16)	7	2
Greer	578	(29)	(65)	(77)	(103)	(95)	(82)	2
Hollymead	494	17	8	6	9	14	18	2
Woodbrook	338	(18)	(17)	(15)	(25)	(14)	(7)	3
Total	3,306	32	(43)	(104)	(138)	(126)	(78)	9

* Does not include any additional Pre-K programs beyond current ones

Places 29: Future Land Use



TRANSPORTATION STUDY

Thomas Jefferson Planning District Commission
Virginia Department of Transportation

Consulting Team:
Meyer Mohaddes Associates, Inc.
Community Design + Architecture, Inc.
Urban Advantage

MASTER PLAN

Albemarle County
Consulting Team:
Community Design + Architecture, Inc.
Meyer Mohaddes Associates, Inc.
ZHA, Inc.
Kathleen M. Galvin, Architect
Timmons Group
Urban Advantage

Legend

- Proposed Roadway Network (1)
- Possible Additions to Roadway Network (beyond 2025)
- Potential Connections (Pedestrian, Bicycle, or Vehicular)
- NS Neighborhood Service Center
- CC Community Center
- DC Destination Center
- U Uptown

NOTE: Users of the Places29 Future Land Use Map must also consult the Places29 Parks & Green Systems Map to see if additional

(1) FOR BREAKDOWN OF PROPOSED ROADS INTO DIFFERENT CATEGORIES SEE TRANSPORTATION NETWORK DIAGRAM

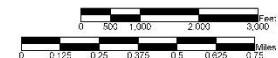
- | | | | |
|---|---|---|--|
|  | Airport District |  | Office / R & D / Flex / Light Industrial |
|  | Urban Mixed Use (in Centers) |  | Light Industrial |
|  | Urban Mixed Use (in areas around Centers) |  | Heavy Industrial |
|  | Commercial Mixed Use |  | Institutional |
|  | Urban Density |  | Public Open Space |
|  | Neighborhood Density |  | Privately Owned Open Space: Environmental Features |
|  | Development Area Boundary |  | UDA Boundary (See page 8-6) |



**Creating and
Connecting
Communities
in Northern Albemarle**

FUTURE LAND USE SOUTH

Date: 6/16/2015



Redistricting Advisory Committee

- Historically, the School Board seeks to utilize existing seats before building new ones.
- The School Board convened a redistricting advisory committee in April 2015 to study the overcrowding at Greer Elementary.
- The committee found NO viable redistricting solutions due to insufficient space at adjacent schools, impact on neighborhoods recently redistricted, geographic islands, and other challenges.
- With no immediate relief from redistricting, additional elementary school capacity in the urban ring is needed.

Woodbrook Addition, Modernization & Renovation

PROJECT INFORMATION

Project History

- In 2014, the LRPAC studied a 8 classroom vs. 16 classroom addition
- The LRPAC included the larger addition as a part of their final recommendations in 2014 & 2015
- School Board requested the project in Fall of 2014, but the project was not included in BOS adopted 5 year CIP
- School Board requested the project again in Fall of 2015. The BOS has not adopted a CIP yet.

Why Woodbrook?

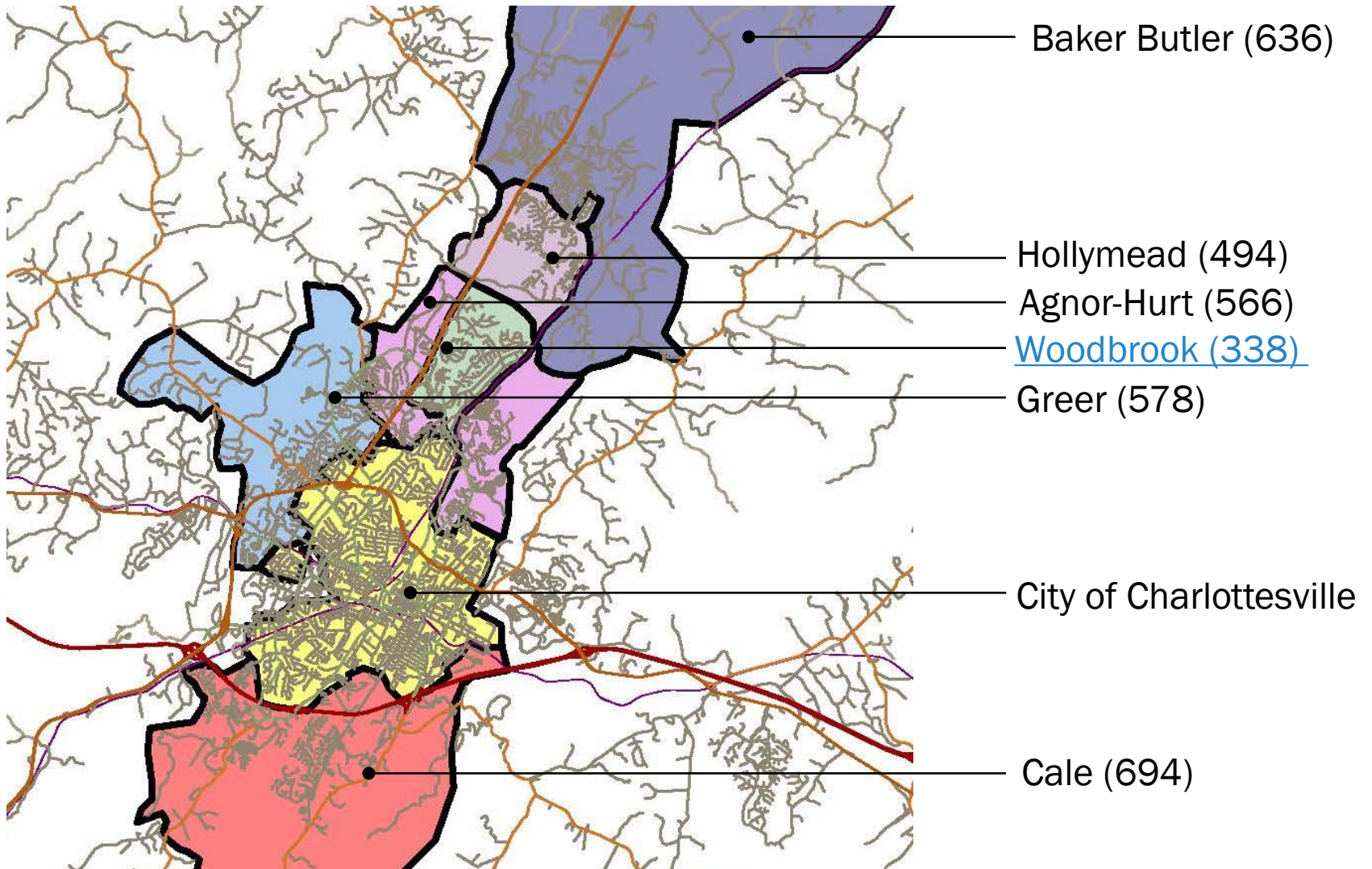
Central Location

Multiple schools could benefit

Limited ability to expand Greer (topography, rock)

Small size compared to other urban ring elementary schools

Boundaries



Recent Projects

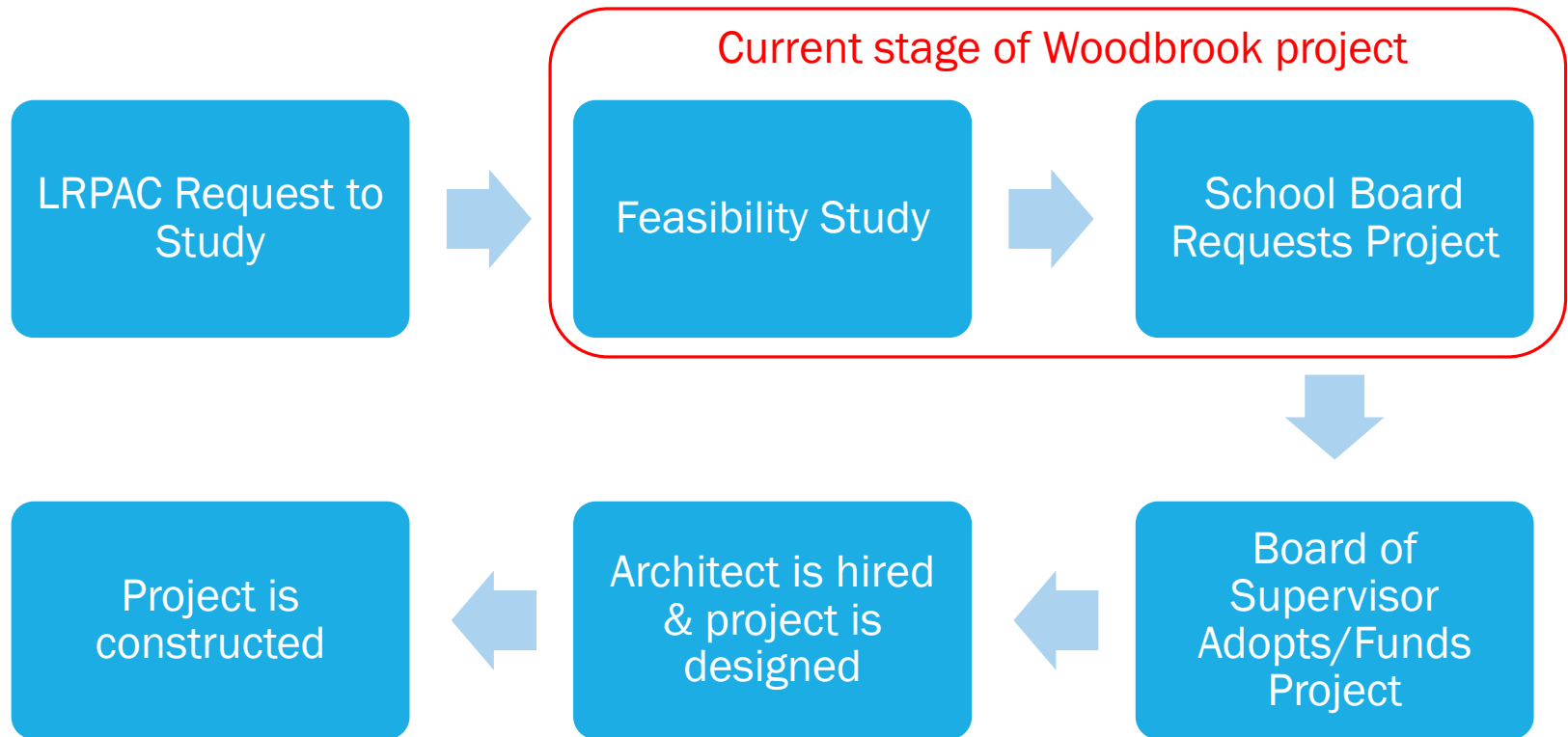


Greer Elementary
6 Classroom Addition
Open 2012/13 School Year
New Capacity: 578



Agnor-Hurt Elementary
8 Classroom Addition
Open 2015/16 School Year
New Capacity 566

Project Life Cycle



Project Request

Timing: Open for 2018/19 School Year
Renovation Complete for 2019/20 School Year

Total Budget: \$ 13,483,777

Purpose: Address Urban Ring Capacity Deficit

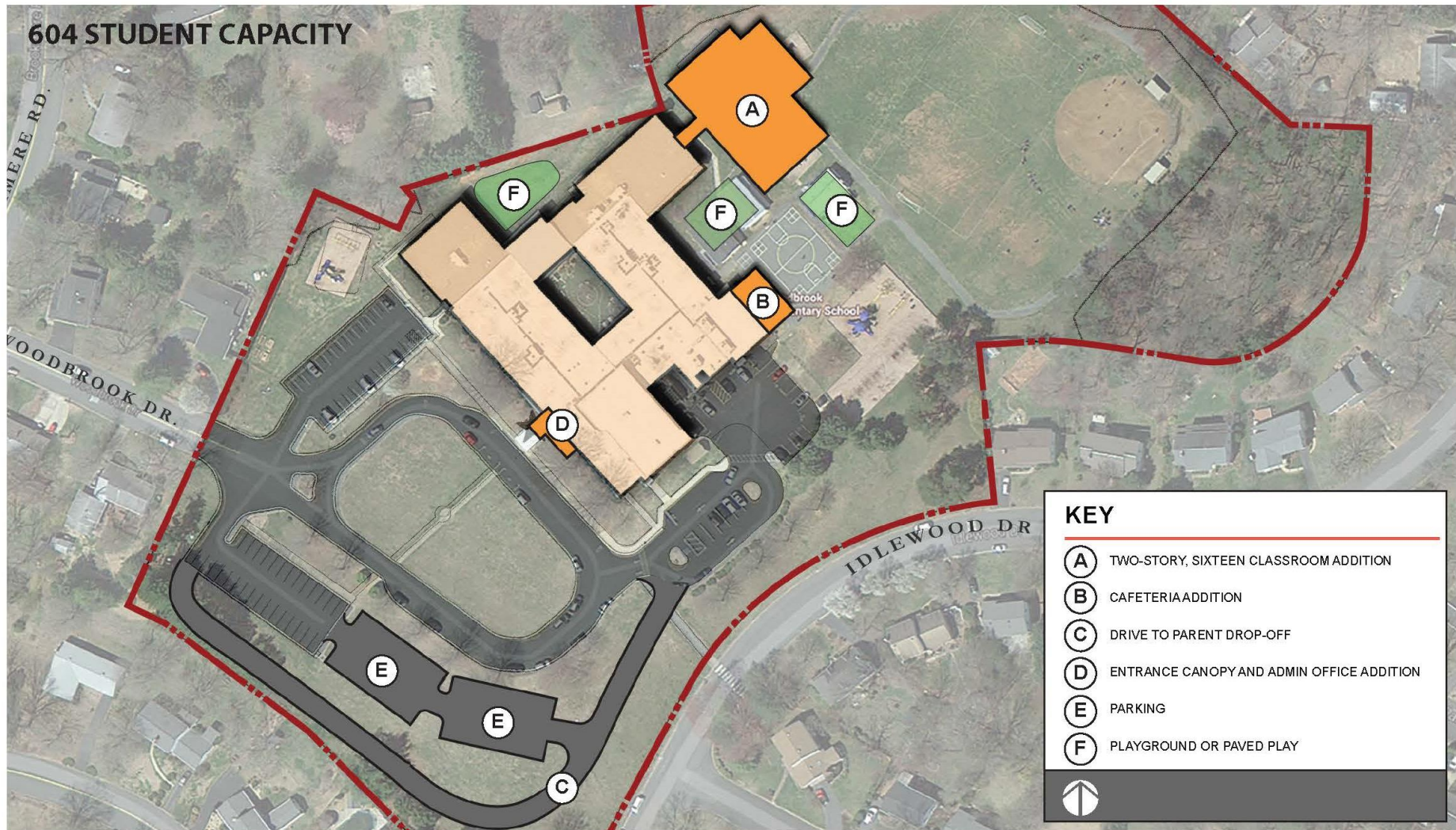
Scope

ADDITIONS (40,000 SF)

- 16 classrooms (2 story)
- 2 SPED Rooms
- Maker Space
- Professional Development training space
- Expanded Cafeteria
- A new Gymnasium and support spaces.

IMPROVEMENTS TO EXISTING BUILDING

- Classroom modernization
- New Furniture
- Media Center modernization
- Kitchen & Serving Line Improvements/Upgrades
- Cafeteria Renovation
- ADA Improvements
- Renovate bathrooms
- Expand admin area
- New signage
- New electrical switch gear



SITE PLAN FOR POTENTIAL ADDITIONS & RENOVATIONS - OPTION 2 - BACK

Woodbrook Elementary School, Albemarle County Public Schools

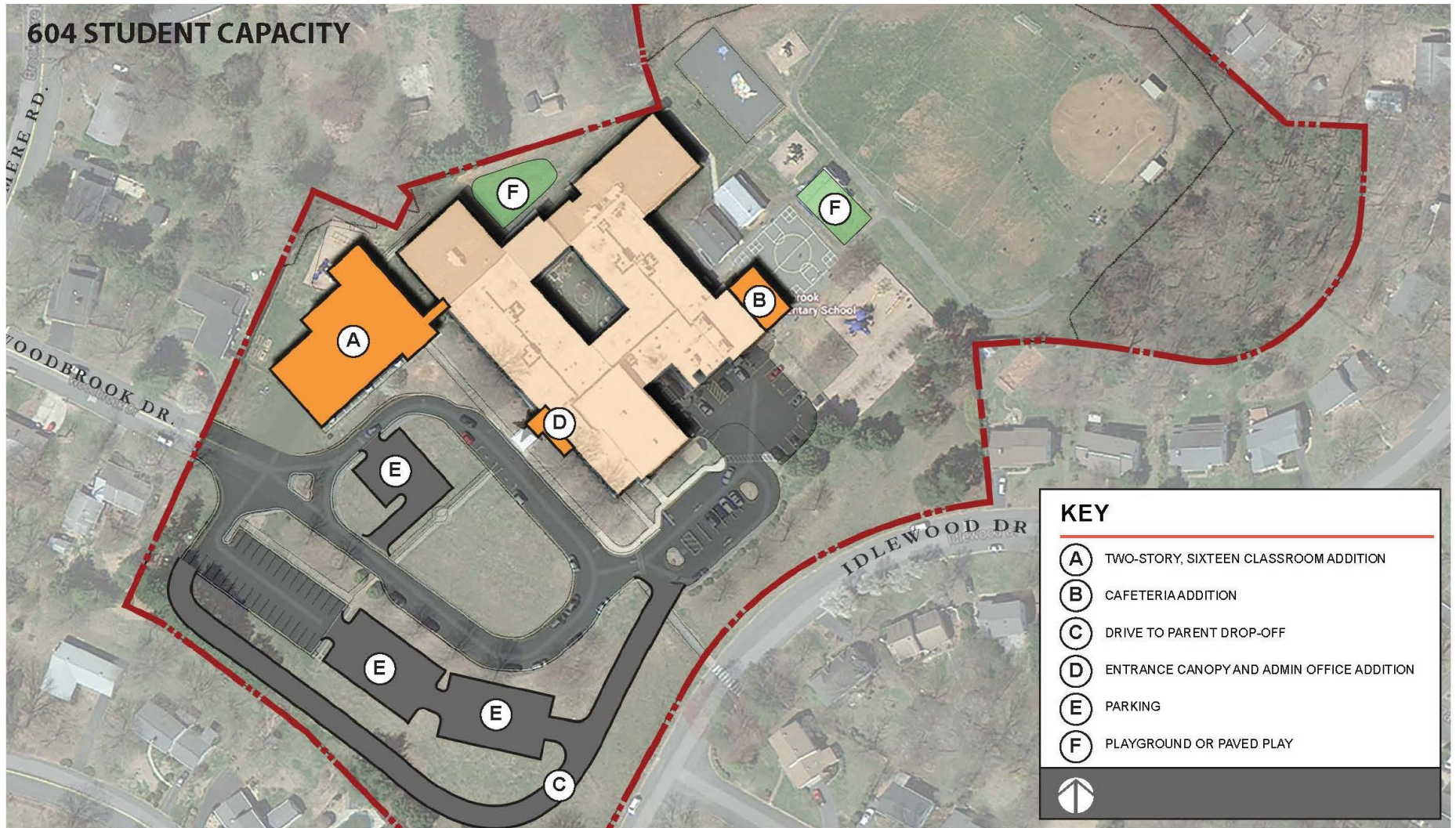
BWES - 10 (04-18-2014)

SPRING, 2014



*Gym addition not illustrated

604 STUDENT CAPACITY



SITE PLAN FOR POTENTIAL ADDITIONS & RENOVATIONS - OPTION 2 - FRONT

Woodbrook Elementary School, Albemarle County Public Schools

BWES -9 (04-18-2014)

SPRING, 2014



*Gym addition not illustrated

Traffic Impact

- Current: 4 regular busses, 2 SPED busses
- Addition would add 3-4 busses
- Project includes traffic flow and parking improvements



Next Steps

Key Dates

February 19

County of Executive recommendation to the Board of Supervisors

February – April

Board of Supervisors (BOS) Budget Cycle

Visit: www.albemarle.org for latest dates & agendas

April

Board of Supervisors Adopts Budget

Ongoing

Further exploration of alternate solutions

Questions?

This presentation and more information about the CIP can be found
at www.k12albemarle.org