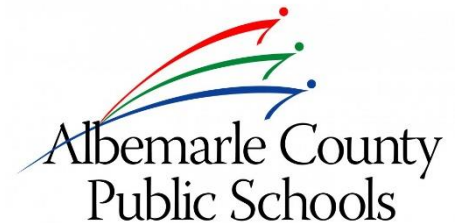


WOODBROOK ELEMENTARY

Addition, Renovation, & Modernization

COMMUNITY MEETING

NOVEMBER 29, 2016



Scope


- Additions

- 16 classrooms
- 2 SPED Rooms
- Support spaces
- Expanded Cafeteria
- A new Gymnasium and support spaces.

- Improvements to existing building

- Classroom Modernization & Furniture
- Media Center Modernization
- Kitchen & Serving Line Improvements/Upgrades
- Cafeteria Renovation
- ADA Improvements
- Renovate bathrooms
- Expand admin area
- New signage
- New electrical switch gear

Project Schedule

| Phase | 2016 | | | | | | 2017 | | | | | | | | | | | | 2018 | | | | | | | |
|------------------------|------|---|---|----|---|---|------|---|---|----|---|------|---|---|----|---|---|---|------|---|---|---|---|---|---|---|
| | J | A | S | O | N | D | J | F | M | A | M | J | J | A | S | O | N | D | J | F | M | A | M | J | J | A |
| Schematic Design | 3M | | | | | | | | | | | | | | | | | | | | | | | | | |
| Design Development | | | | 2M |  | | | | | | | | | | | | | | | | | | | | | |
| Construction Documents | | | | | | | 4M | | | | | | | | | | | | | | | | | | | |
| Bidding/ Award | | | | | | | | | | 2M | | | | | | | | | | | | | | | | |
| Construction | | | | | | | | | | | | 13M+ | | | | | | | | | | | | | | |
| Redistricting Study | | | | | | | | | | | | | | | 4M | | | | | | | | | | | |

Key Changes Since September

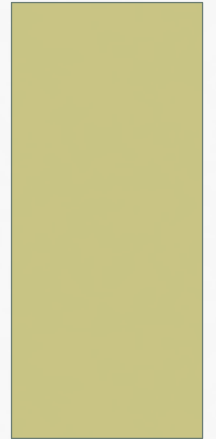
- Traffic study complete
- Further refinement of site plan
- Development of interior floor plans

EPR_{PC}

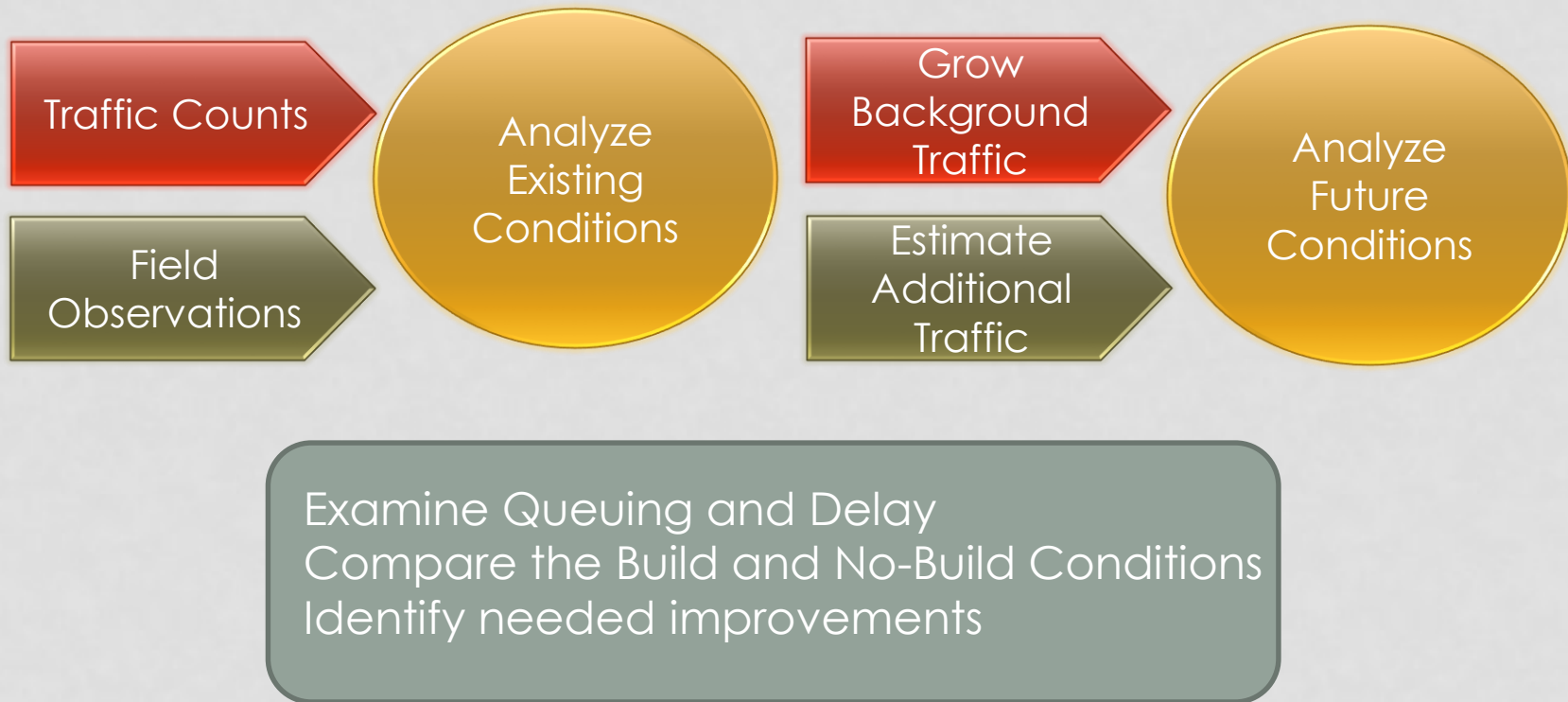


WOODBROOK ELEMENTARY SCHOOL EXPANSION

TRAFFIC STUDY OVERVIEW

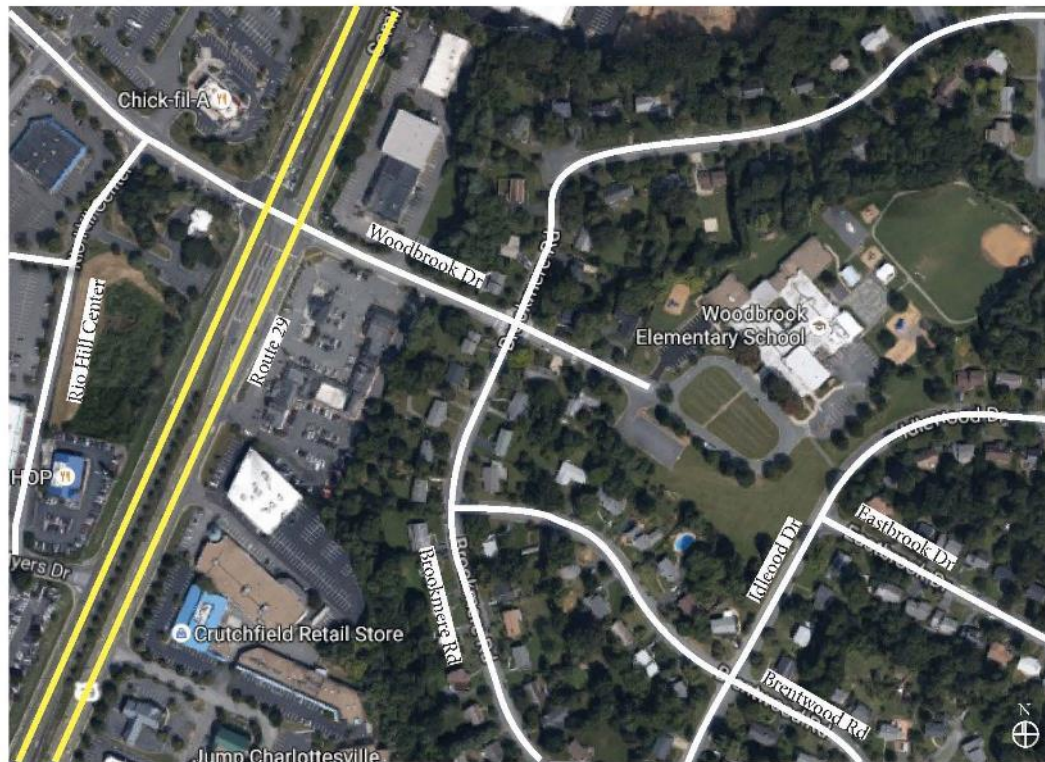


Study Process



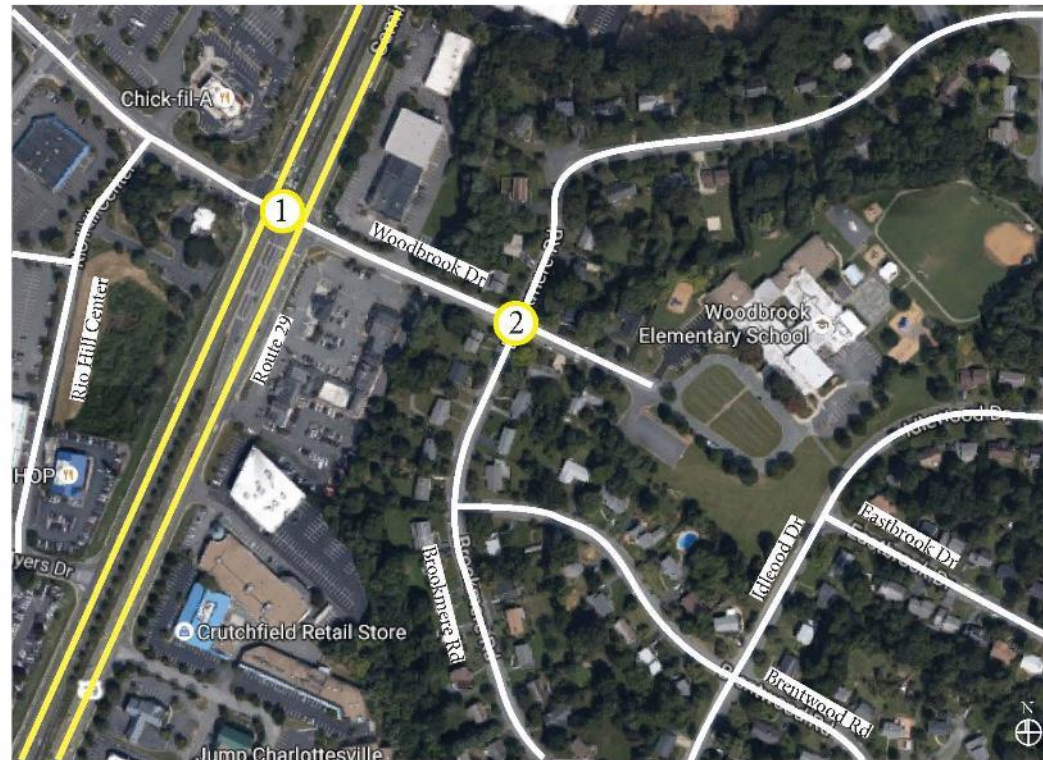
Study Area

Figure 2 Site Location



Study Intersections

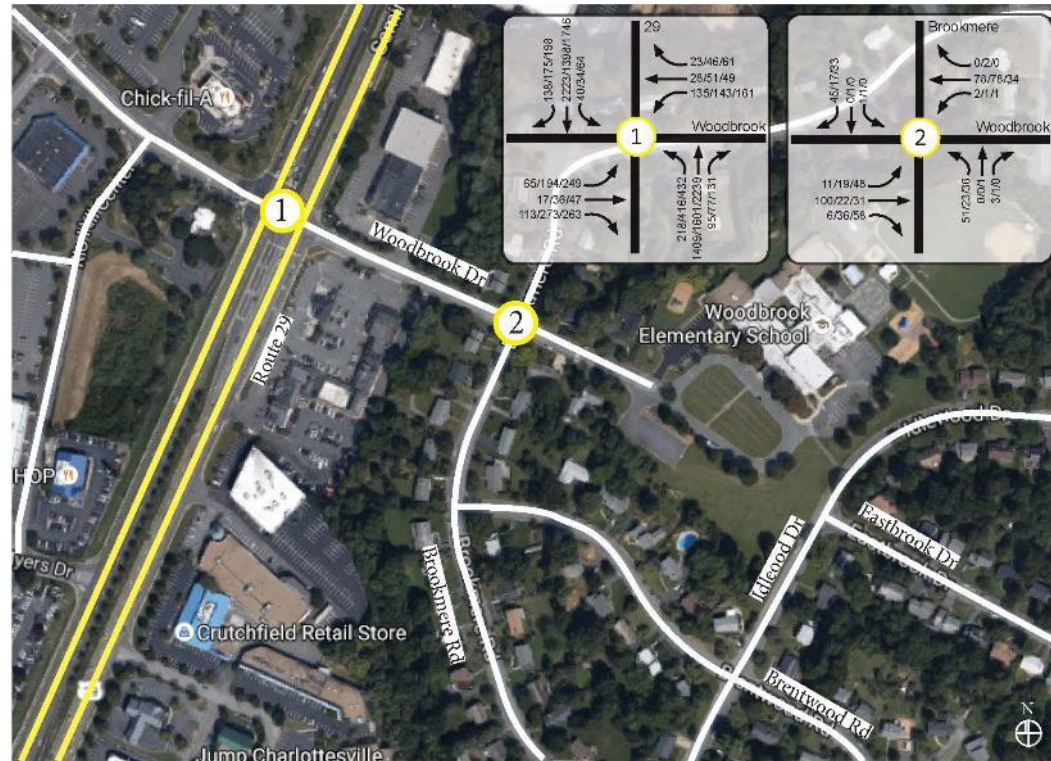
Figure 3 Study Intersections



Existing Traffic Volumes

Figure 4 2016 Existing Traffic Volumes

XX/XX/XX AM/School PM/PM



Estimated New Trips

Site Trip Generation

Three methodologies were considered to develop the trip generation estimates associated with the school expansion. The methodologies include:

- The percent increase compared the existing school related traffic,
- The *Institute of Transportation Engineers (ITE) Trip Generation Manual*, and
- A manual estimate based on 260 students, 74% bus ridership, and vehicle occupancy of 1.25 provided by Albemarle County School staff.

A discussion of the three methods can be found in **Appendix F**.

After comparing the trip generation methods, *ITE Trip Generation 9th Edition* was used to calculate the future site trips. **Table 5** provides a summary of the trip generation for the expansion.

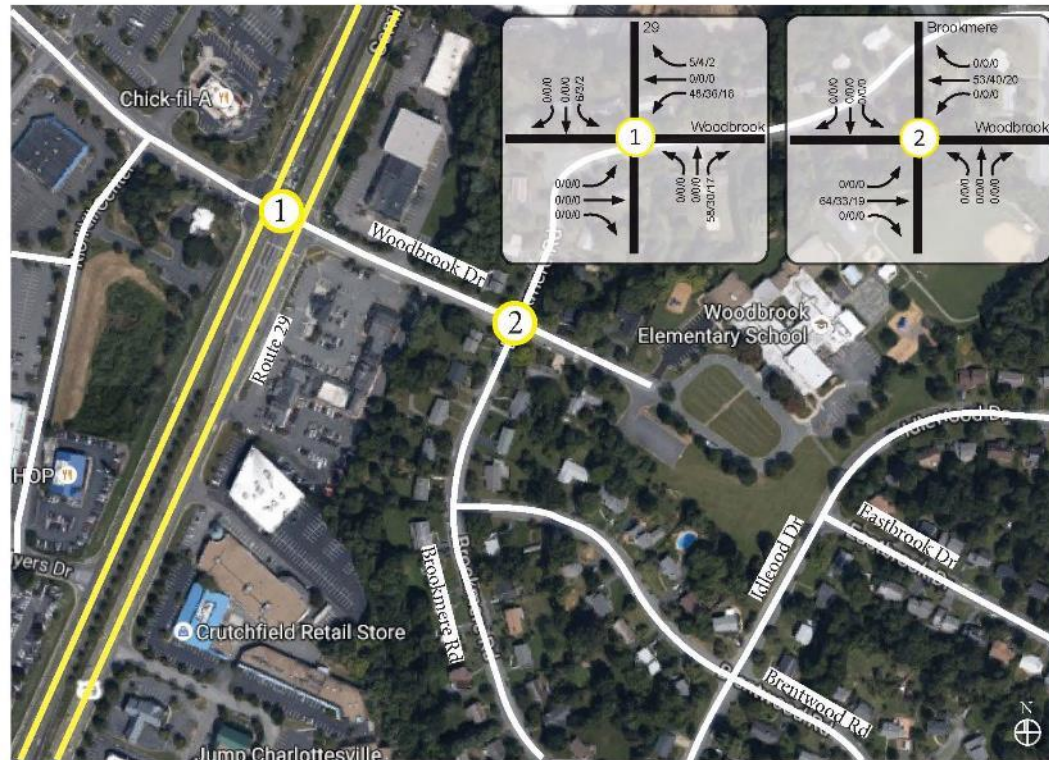
Table 5 Site Trip Generation

| description | lu code | unit | qty | daily | AM | | school PM | | commuter PM | |
|-------------------|------------|----------|-----|-------|----|-----|-----------|-----|-------------|-----|
| | | | | | in | out | in | out | in | out |
| elementary school | 520 | students | 260 | 335 | 64 | 53 | 33 | 40 | 19 | 20 |

New Traffic

Figure 8 Site Trip Assignment

XX/XX/XX AM/School PM/PM



Future Traffic Volumes (2017)

Figure 9 2017 Build Traffic Volumes

XX/XX/XX AM/School PM/PM



Future Traffic Volumes (2022)

Figure 10 2022 Build Traffic Volumes

XX/XX/XX AM/School PM/PM



Traffic Conditions Comparison 2022

Brookmere/Woodbrook

2022 No Build VS. 2022 Build Queue Comparison
Woodbrook Dr/Brookmere Rd - Morning Peak Hour



2022 No Build VS. 2022 Build Queue Comparison
Woodbrook Dr/Brookmere Rd - Afternoon School Peak Hour



Traffic Conditions Comparison 2017

Route 29 / Woodbrook

2017 No Build VS. 2017 Build Queue Comparison
Route 29/Woodbrook Dr - Morning Peak Hour



2017 No Build VS. 2017 Build Queue Comparison
Route 29/Woodbrook Dr - Afternoon School Peak Hour



Traffic Conditions Comparison 2022

Route 29 / Woodbrook

2022 No Build VS. 2022 Build Queue Comparison
Route 29/Woodbrook Dr - Morning Peak Hour

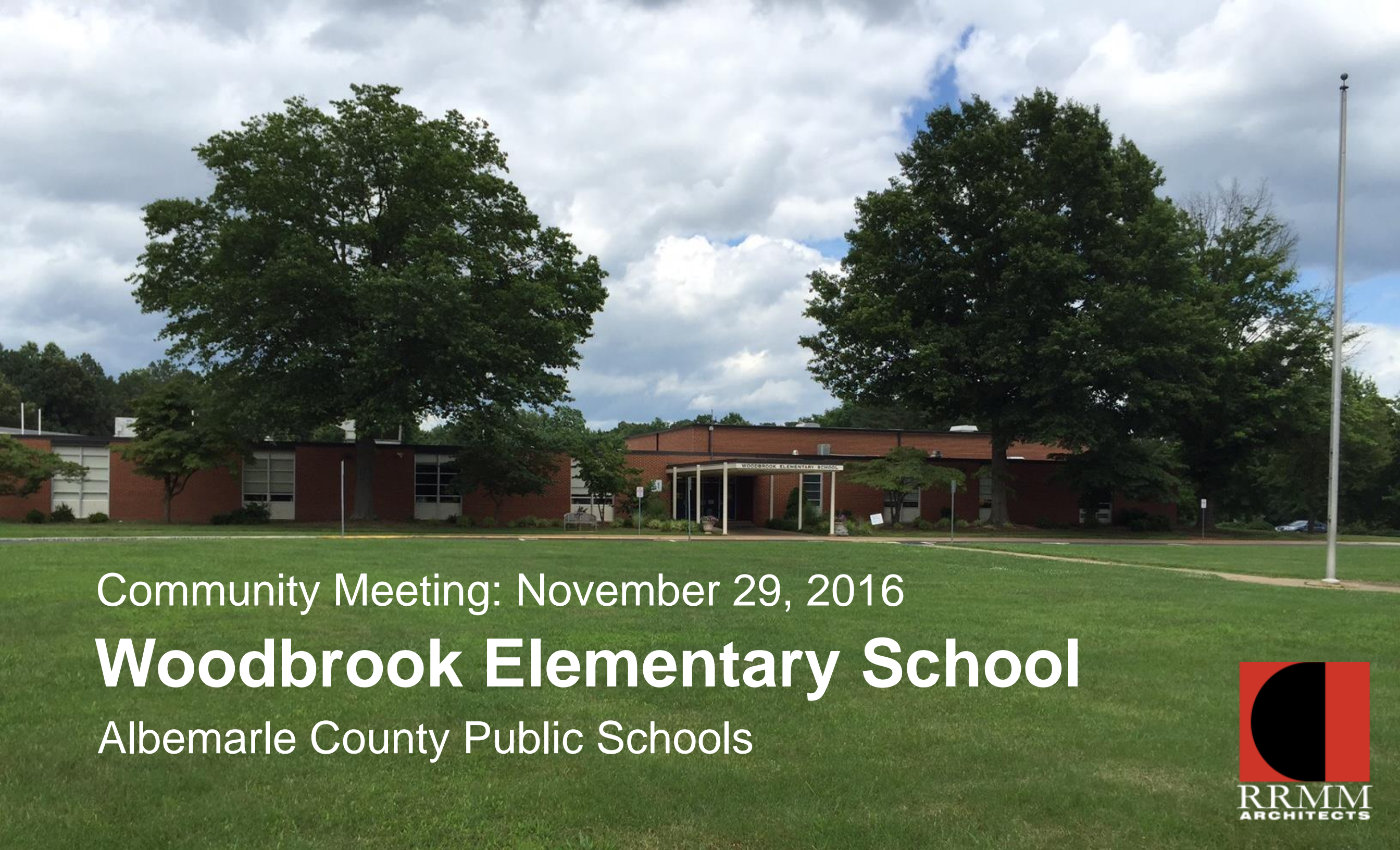


2022 No Build VS. 2022 Build Queue Comparison
Route 29/Woodbrook Dr - Afternoon School Peak Hour



Summary

- **Brookmere Rd - minimal increase in queue of one vehicle. Very little impact to delay (1.3s on average)**
- **Route 29 – Maximum of 2 more cars in queue. Increase in delay of 2.7s. All cars still make it through in once cycle.**
- **Impacts might be less if Berkmar Extended takes more cars off of Route 29 than included in the analysis.**



Community Meeting: November 29, 2016

Woodbrook Elementary School

Albemarle County Public Schools





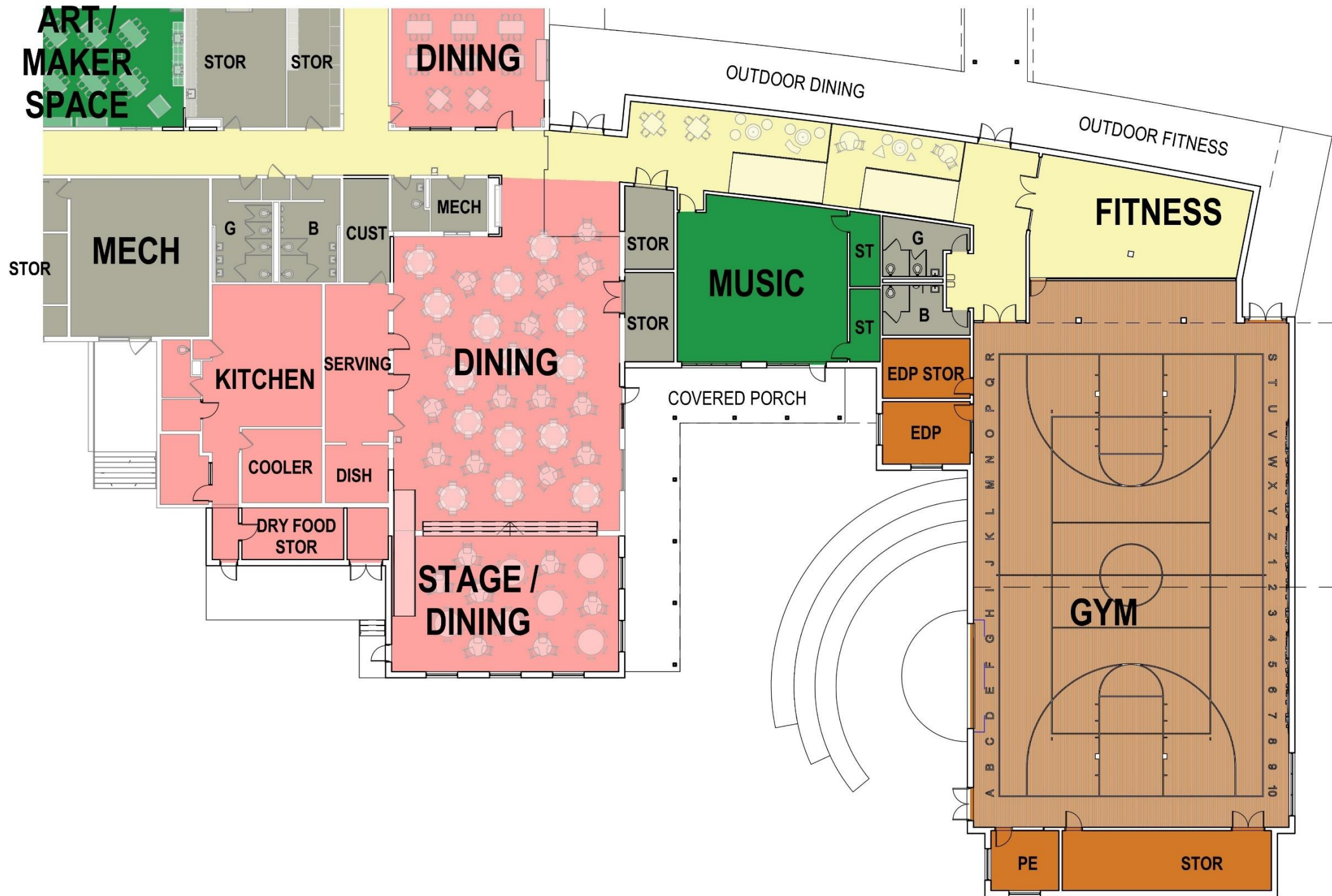
Woodbrook Elementary School

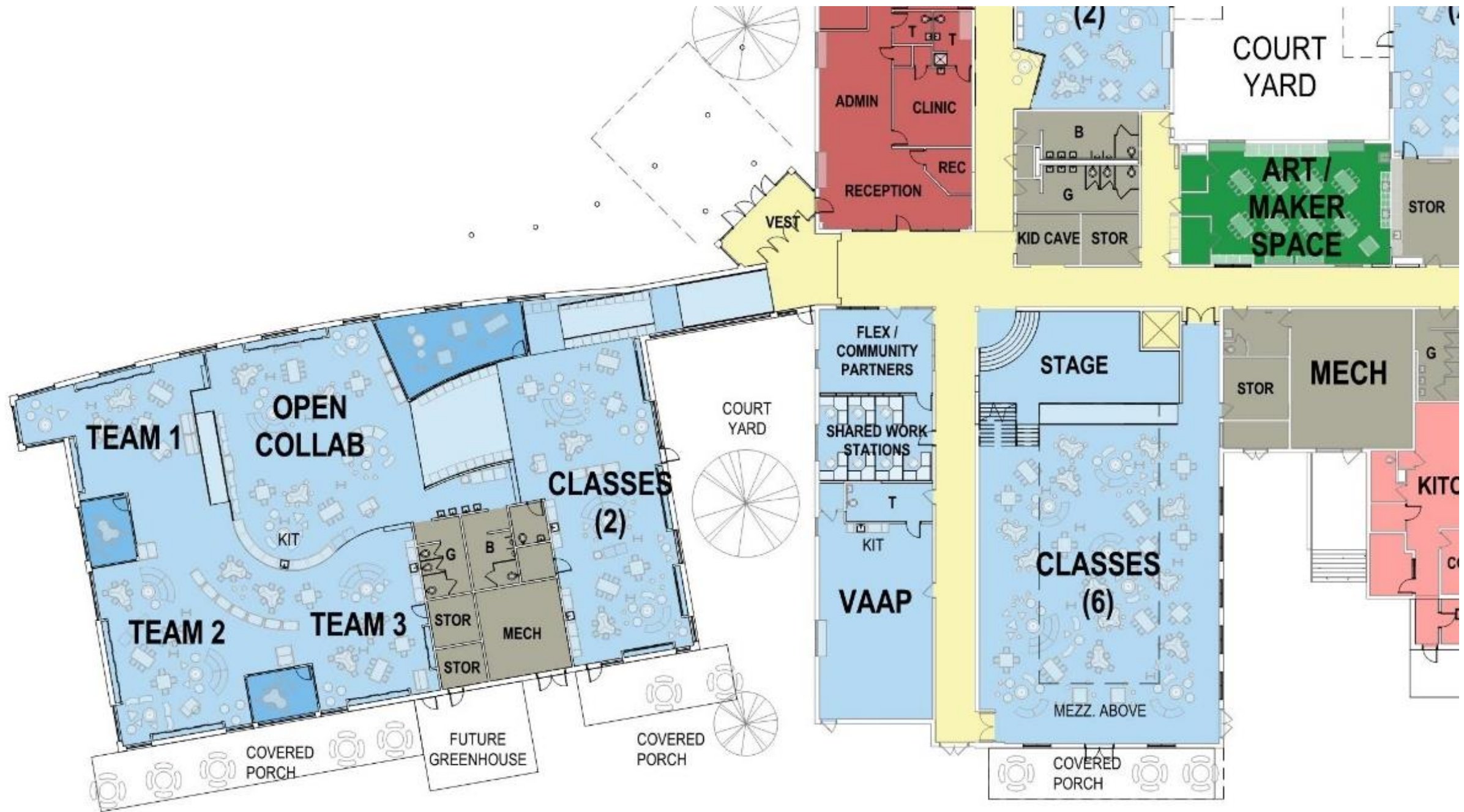
DEPARTMENT

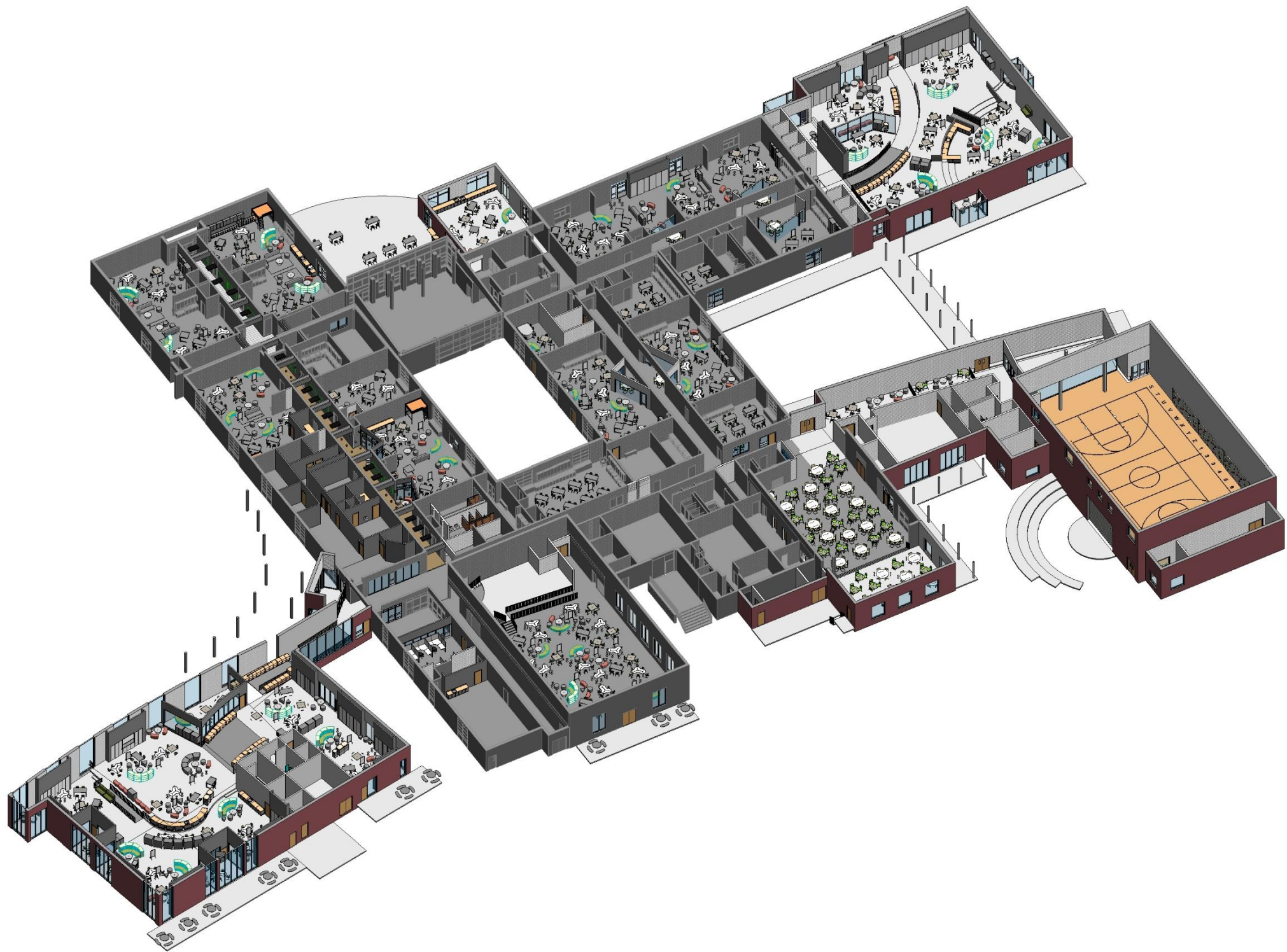
- ADMINISTRATION
- BUILDING SERVICES / RESTROOMS
- CAFETERIA / KITCHEN
- CIRCULATION
- COLLABORATION
- LEARNING SPACES
- MEDIA CENTER
- MUSIC / ART / MAKER
- PHYSICAL EDUCATION



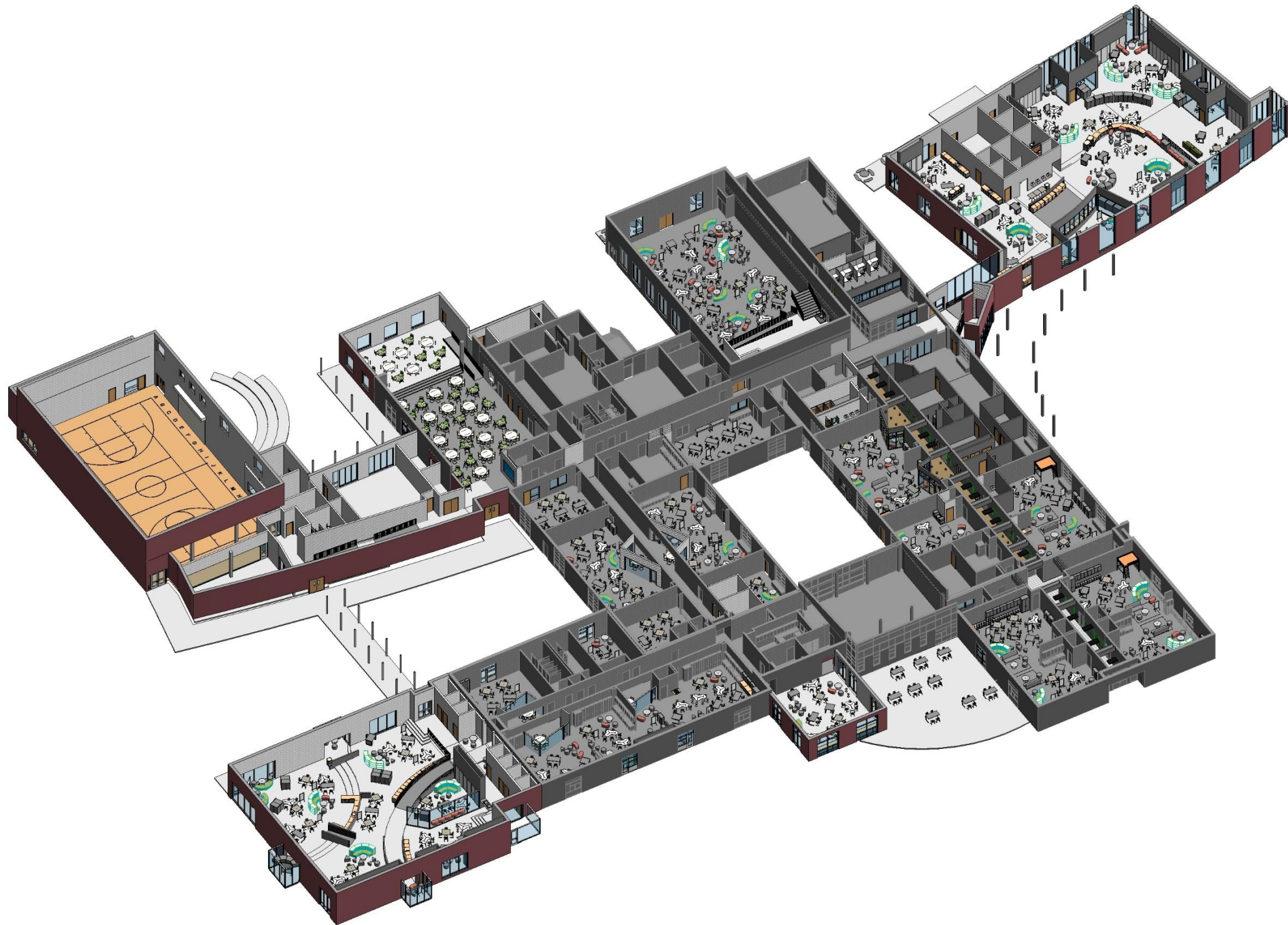




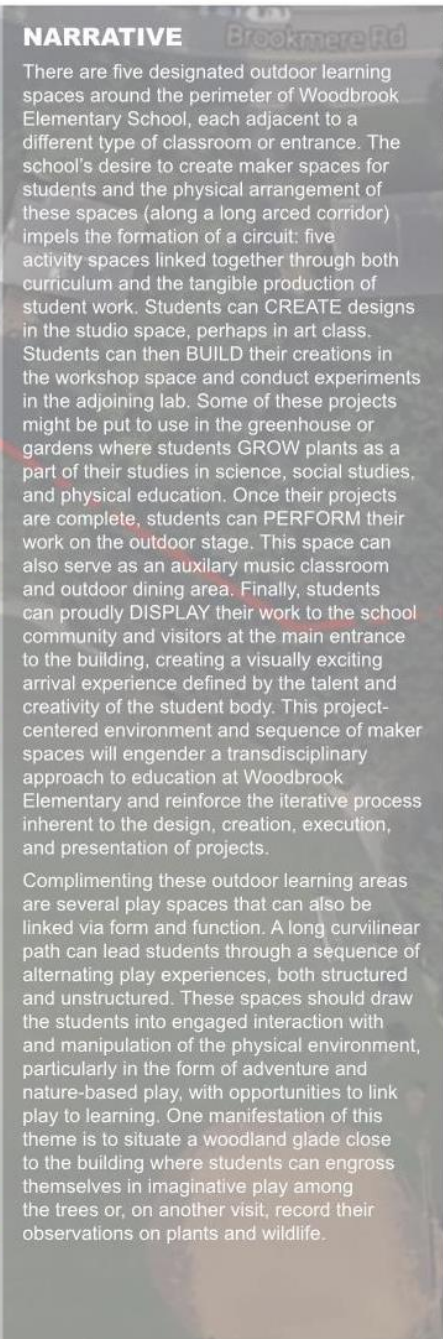




Woodbrook Elementary School



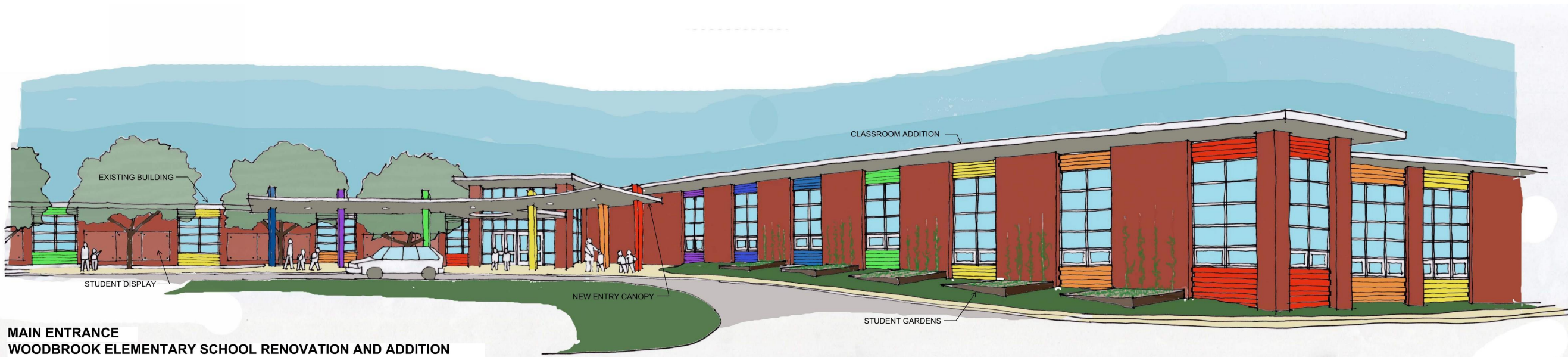
Woodbrook Elementary School

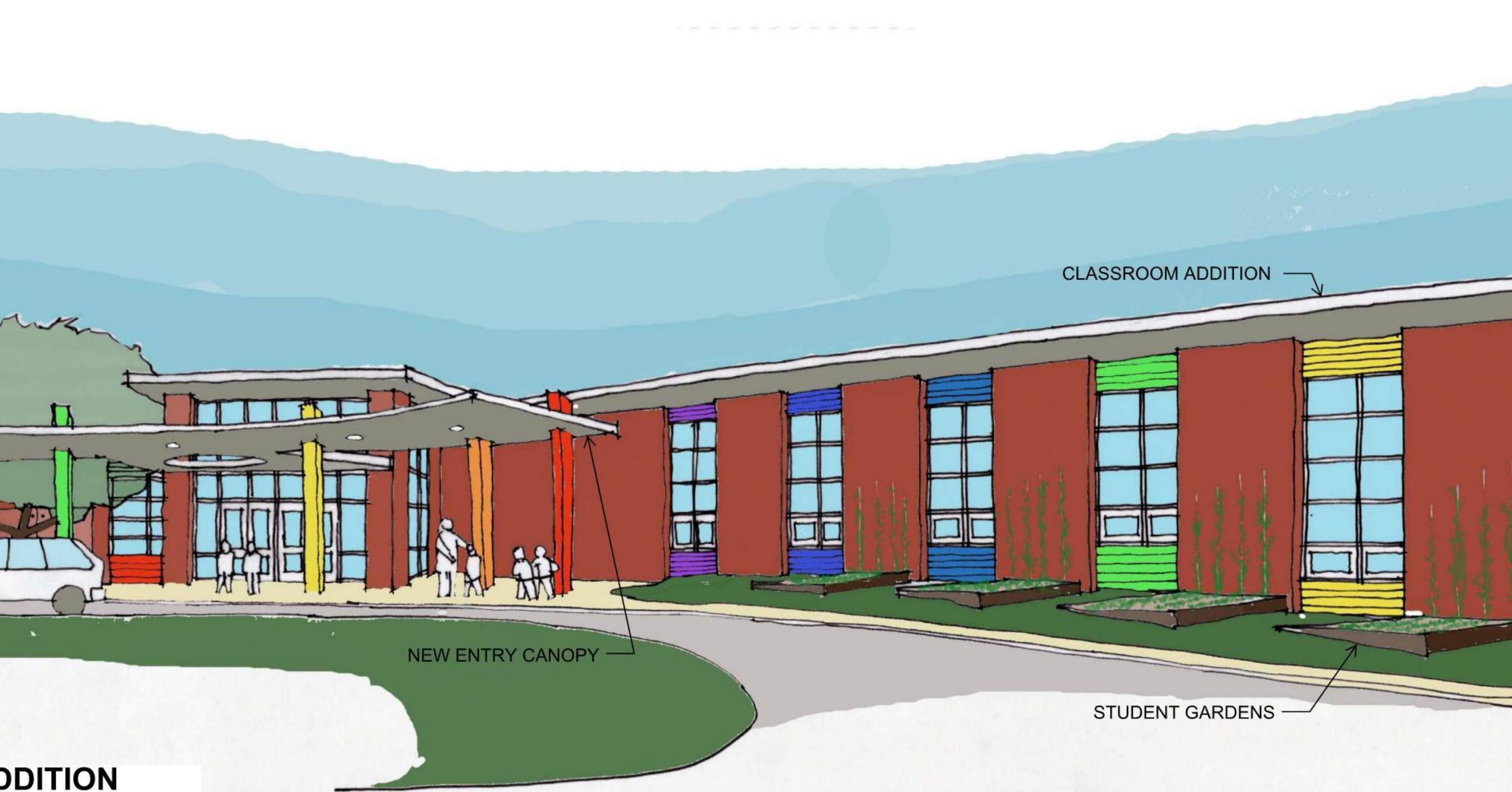


TIMMONS GROUP
YOUR VISION ACHIEVED THROUGH OURS.

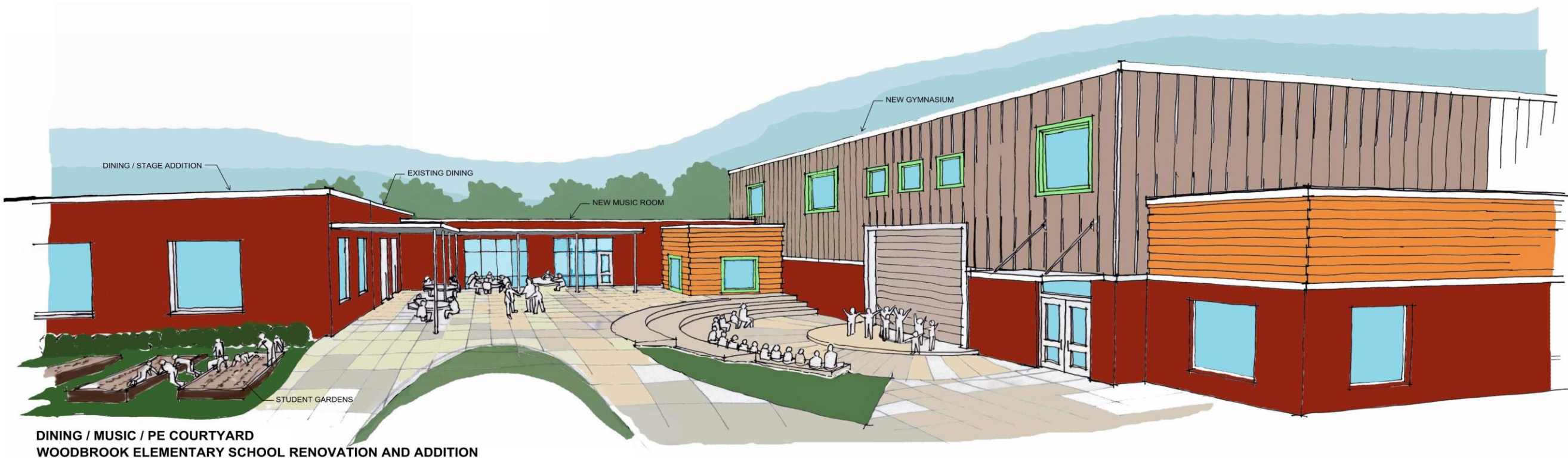


Woodbrook Elementary School





DDITION



Thank You