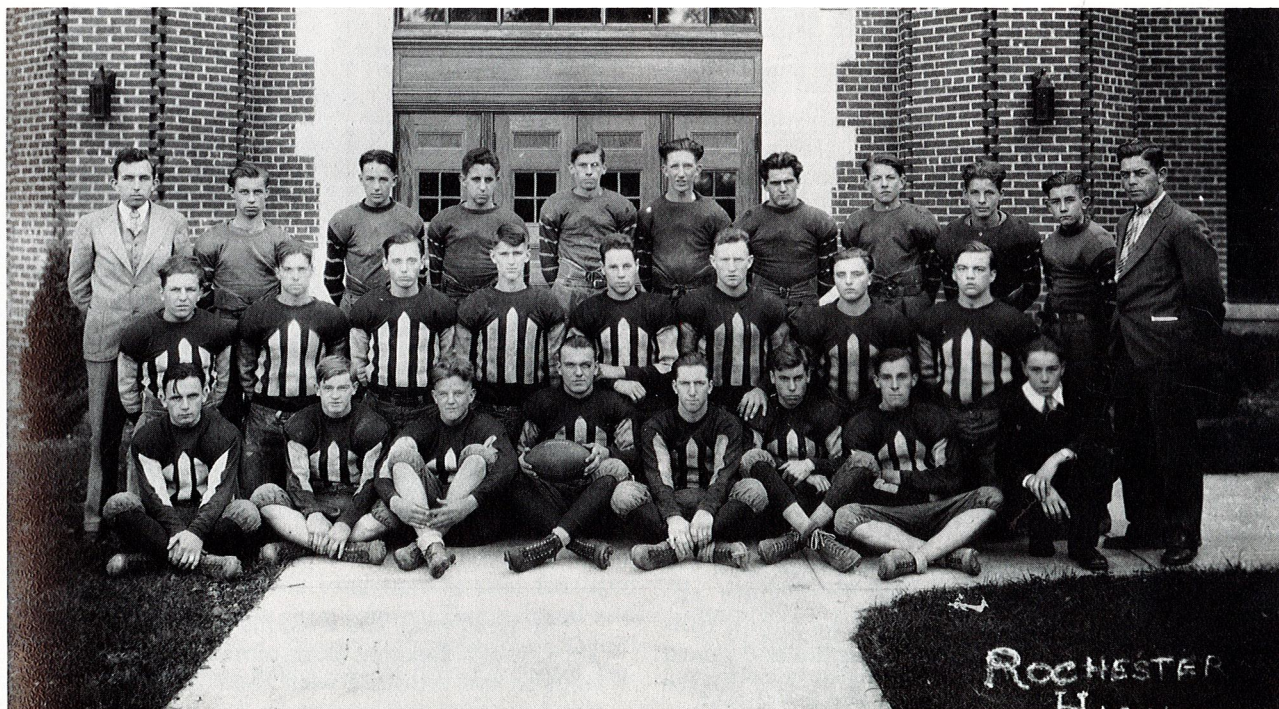




The 1927 Team. From the left in front — Oren Parker, Claire Wheaton, Walter "Potsy" Toussaint, Lyle "Red" Knapp, Fred Williams, Bill Fenner, Glenn Hutchins and Bill Potere.

Second Row — Frank Parsons, Allen Rae Wilson, Keith "Slivers" Spencer, Guy Patten, unidentified, Ed Harvey, Ted Shinnick and Paul Spaven.

Back Row — Manager Clarence "Rip" Rewold, Paul Bond, Jerome Steinberg, Milton Tubbs, Howard Quinney, Bob Wheaton, Jerry Falls, Jack Flumerfelt, Don Wheaton, unidentified, Phil Patterson, Rollie Easterle and Coach Roy Kees.



The 1929 Team. From the left is front — Jack Brown, Ted Shinnick, Bob Wheaton, Walter "Potsy" Toussaint, Cliff Nunn, Francis "Frenchy" Barkham, Louis "Brod" Peters and Manager Hugh Wilson.

Second Row — Fred Johnson, John Fortune, Rollie Easterle, Jerry Falls, Ross Frantz, Lyle "Red" Knapp, Leonard Siudara and Ed Church.

Back Row — Assistant Coach Hubert Spade, Marvin Gayfield, Kenneth Parker, Carroll Flanigan, George Ennis, Robert Studt, Kenneth McCotter, John Adomitis, Marvin Terry, Robert Randall and Coach Roy Kees.