

The background features abstract, overlapping geometric shapes in various shades of blue, ranging from light sky blue to deep navy blue. These shapes are primarily located on the left and right sides of the frame, creating a modern, dynamic border around the central text.

AMERICAN SIGN LANGUAGE ALPHABET

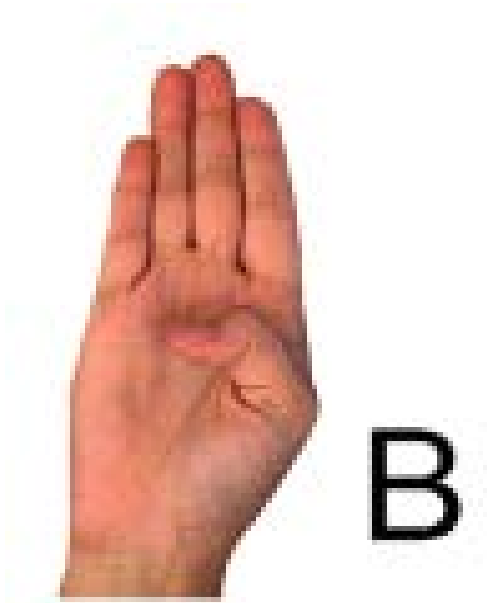
THE LETTER 'A'



A

Make a fist with fingers straight down
as to not confuse 'A' with and 'S'.

THE LETTER 'B'



Fingers are out straight from hand, pointing up, with thumb bent toward the palm.

THE LETTER 'C'



C

Fingers are curved slightly down toward the palm and the thumb curved slightly up.

THE LETTER 'D'



D

Fore finger is straight up with the other three fingers making a circle and meeting with the thumb.

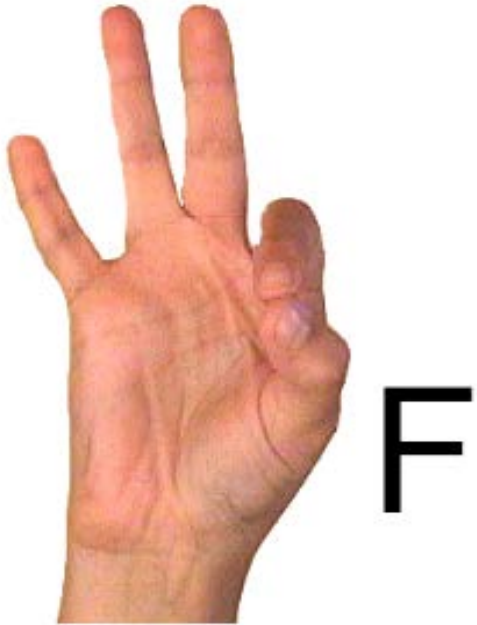
THE LETTER 'E'



E

All four fingers are curved down and resting on the top of the thumb which is bent toward the palm.

THE LETTER 'F'



Fore finger is bent to touch the thumb, making a circle and the other three fingers are stretched upward.

THE LETTER 'G'



The fore finger and the thumb are stretched out in same direction, but not touching each other with the other three fingers forming a partial fist.

THE LETTER 'H'



Fore finger and middle finger are stretched out, close together and the hand is turned side ways, showing the fore finger on top of the middle finger.

THE LETTER 'I'



I

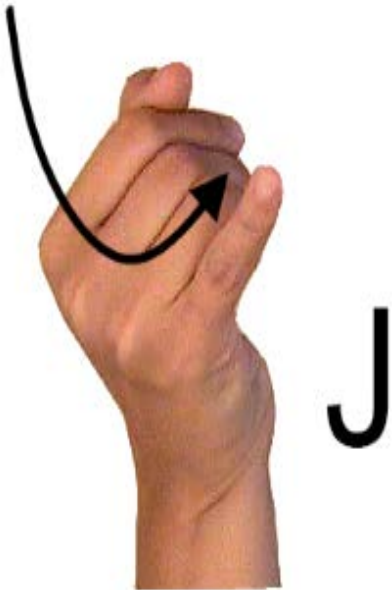
The little finger is straight up while the other fingers are down to form an easy fist.

'I LOVE YOU'



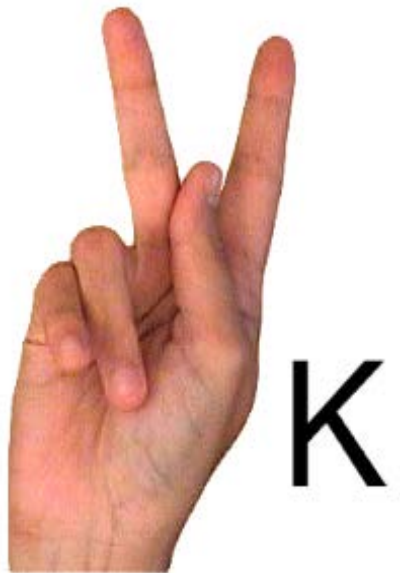
Little finger, fore finger and thumb are out with the middle finger and ring finger pointing down.

THE LETTER 'J'



Little finger is straight out and the other fingers are slightly forming a fist. Swing the little finger down and curve up to form a J.

THE LETTER 'K'



The fore finger is pointing up and the middle finger is pointed out with the thumb resting on the middle finger. The other two fingers are folded down.

THE LETTER 'L'



Fore finger pointed
up and thumb out
from the hand to
form a L.

THE LETTER 'M'



M

All four fingers are bent to make a soft fist over the thumb. The thumb is under three fingers and on top of the little finger.

THE LETTER 'N'



N

All four fingers are bent to make a soft fist over the thumb. The thumb is under two fingers and on top of the ring and little fingers.

THE LETTER 'O'



O

Close all fingers to meet the thumb, making an 'O'.

THE LETTER 'P'



The fore finger is pointed out and the middle finger is pointed down with the thumb resting on the middle finger. (Like a 'k', but pointed down.)

THE LETTER 'Q'



Fore finger and thumb are pointing downward, other fingers form a small fist.

THE LETTER 'R'



Cross the fore finger and the middle finger and the thumb touches the ring finger.

THE LETTER 'S'



S

Make a
fist.

THE LETTER 'T'



T

Thumb is between the fore finger and the middle finger after forming a fist.

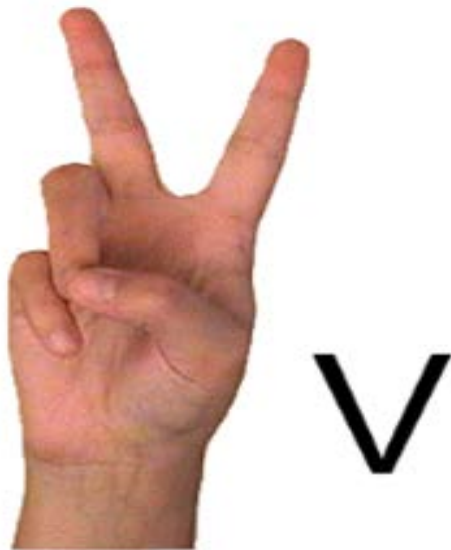
THE LETTER 'U'



U

The fore finger and the middle finger are pointing upward while the thumb crosses over to the ring finger.

THE LETTER 'V'



The fore finger and the middle finger are pointing upward and in a 'V' form, while the thumb crosses over to the ring finger.

THE LETTER 'W'



The fore finger, the middle finger and the ring finger and pointing upward and spread out.

THE LETTER 'X'



X

With a fist made, raise the fore finger into a half circle.

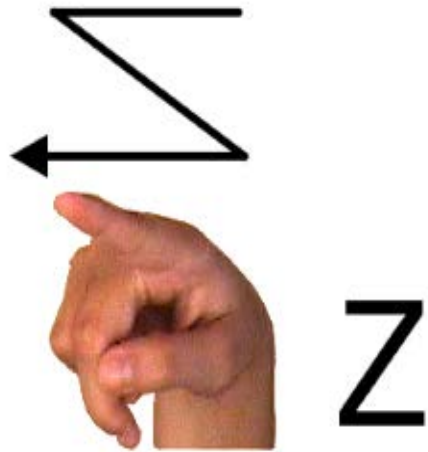
THE LETTER 'Y'



Y

The little finger and the thumb are pointed upward and the other fingers are pointed down.

THE LETTER 'Z'



Using the fore finger, draw a 'z' in the air.

A few common signs...



MY NAME...

Pat your chest for 'MY' and then form an 'H' with both hands and tap one on top of the other, twice.



YES...

Form a fist and move fist up
and down.



NO...

Place the fore finger and the middle finger on the thumb and open and close.



HAPPY...

Both hands in front of you, swing
both hands in a circle about twice.



WHY...

Place flat hand on side of forehead and as you pull your hand out from you face, form a 'Y', with the palm turned toward you.





SORRY...

Place your fist toward your chest and make a couple of small circles.



FOOD...

Put your hand toward your face as if to put something in you mouth.

Click below on the American Sign Language Quiz to complete the quiz and then click on submit.

[AMERICAN SIGN LANGUAGE QUIZ](#)