



**Walker-Grant Middle School**  
**Second Semester**  
**Instructional Plan**  

---

**for 2021**



# The Need to Shift Instruction

---

*We need to shift our instruction to better support students AND teachers...*

## January 2021

Sunday	Monday	Tuesday	Wednesday	Thursday	Friday	Saturday
					1	2
3	4	5	6	7	8	9
10	11	12	13	14	15	16
17	18	19	20	21	22	23
24	25	26	27	28	29	30
31						

### The January Shift

- Synchronous instruction as primary delivery
- Mandatory attendance
- Reduction of LAPs – “Skinny LAPs”
- Firm deadlines for assignments throughout LAPs

# The Phased Return to School

---

2021 JANUARY						
Sun	Mon	Tue	Wed	Thu	Fri	Sat
27	28	29	30	31	1	2
3	4	5	6	7	8	9
10	11	12	13	14	15	16
17	18	19	20	21	22	23
24	25	26	27	28	29	30
31	1	2	3	4	5	6



## Phase 1 - January 4<sup>th</sup> – 8<sup>th</sup>

- All students will be distance learning
- All students attend synchronous classes M,T,TH,F
- Wednesdays remain asynchronous (students are expected to work from home)

# The Phased Return to School



## Phase 2 – January 11<sup>th</sup> – 15<sup>th</sup>

- All students distance learning
- All students attend synchronous classes M,T,TH,F in person by zone
- Wednesdays remain asynchronous students are expected to work from home)
- New instruction resumes
  - Begin LAP 6
  - “Skinny LAP” format

2021 JANUARY						
Sun	Mon	Tue	Wed	Thu	Fri	Sat
27	28	29	30	31	1	2
3	4	5	6	7	8	9
10	11	12	13	14	15	16
17	18	19	20	21	22	23
24	25	26	27	28	29	30
31	1	2	3	4	5	6

# The Phased Return to School

## Phase 3 – January 19<sup>th</sup> and beyond

- Return to School – hybrid synchronous instruction
  - Students in Zones A,B in person Mon/Tues
  - Students in Zones C,D in person Thurs/Fri
- All students (Zones A,B,C,D, and distance learners) attend concurrently M,T,TH,F
- Wednesdays remain asynchronous (students are expected to work from home)

**PHASE 3**

2021 JANUARY						
Sun	Mon	Tue	Wed	Thu	Fri	Sat
27	28	29	30	31	1	2
3	4	5	6	7	8	9
10	11	12	13	14	15	16
17	18	19	20	21	22	23
24	25	26	27	28	29	30
31	1	2	3	4	5	6

# The New Structure

---

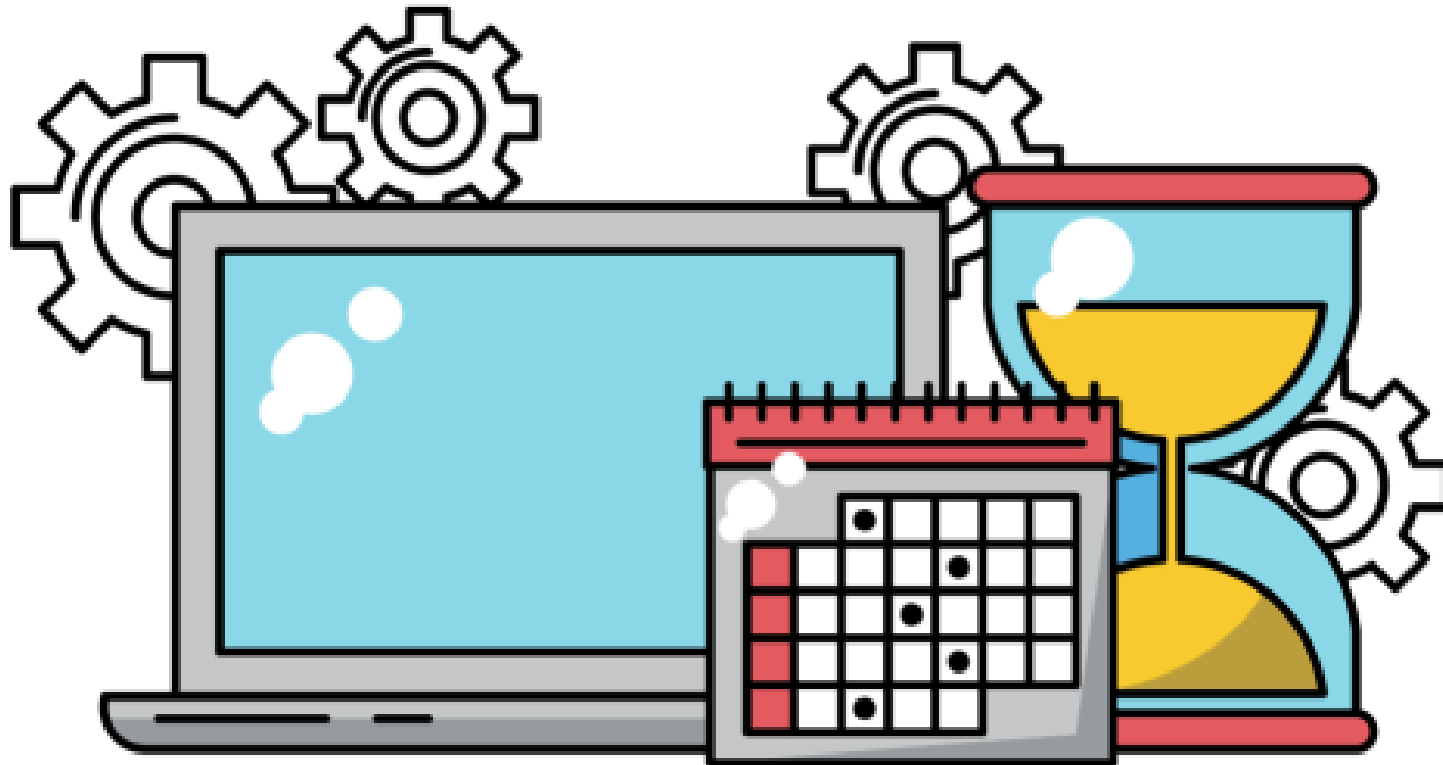


**Attend Today, Achieve Tomorrow**



## Attendance

- Official attendance will be required for every class meeting
- All students should be concurrently present every day that class meets, whether they are in school or remote
- Synchronous class attendance will be maintained in PowerSchool



# The New Structure

---

## Student Deadlines

- Starting in January, students will be expected to submit all LAP assignments by assigned due dates.
- Late work will only be allowed with approval on an individual basis based on extenuating circumstances.

# The New Structure

---

## Academic Schedule

- In person students will report to school by 9:00 AM and will be dismissed by 1:00 PM.
- Breakfast will be served between 8:30 AM – 9:00 AM as students arrive as a pickup and eaten in first classroom
- Lunch will be served between 12:50 PM – 1:00 PM as a grab-and-go upon dismissal
- Class schedules will be approximately 50 minutes with 5-minute transitions.



# WGMS Weekly Schedule – Orange Week A/B

Orange Week (A/B)	Student Zones A&B		All Student	Student Zones C&D	
	Monday	Tuesday	Wednesday	Thursday	Friday
	A Day Odds	A Day Evens	Asynchronous	B Day Odds	B Day Evens
8:00-8:30	Planning	Planning	Planning* Student Support	Planning	Planning
8:30-9:00	Arrival/Breakfast	Arrival/Breakfast		Arrival/Breakfast	Arrival/Breakfast
9:00-9:15	TSA/Homeroom	TSA/Homeroom		TSA/Homeroom	TSA/Homeroom
9:15-10:05	1A	2A		1B	2B
10:10-11:00	3A	4A		3B	4B
11:05-11:55	5A	6A		5B	6B
12:00-12:50	7A	8 TSA		7B	8 TSA
12:50-1:00	Dismissal/Lunch	Dismissal/Lunch		Dismissal/Lunch	Dismissal/Lunch
1:00:1:30	Lunch	Lunch		Lunch	Lunch
1:30-3:30	Planning*	Planning*		Planning*	Planning*

\*Planning time will include some scheduled meetings, instructional collaboration, and professional learning.

# WGMS Bell Schedule – White Week B/A

White Week (B/A)	Student Zones A&B		All Student	Student Zones C&D	
	Monday	Tuesday	Wednesday	Thursday	Friday
	B Day Odds	B Day Evens	Asynchronous	A Day Odds	A Day Evens
8:00-8:30	Planning	Planning	Planning* Student Support	Planning	Planning
8:30-9:00	Arrival/Breakfast	Arrival/Breakfast		Arrival/Breakfast	Arrival/Breakfast
9:00-9:15	TSA/Homeroom	TSA/Homeroom		TSA/Homeroom	TSA/Homeroom
9:15-10:05	1B	2B		1A	2A
10:10-11:00	3B	4B		3A	4A
11:05-11:55	5B	6B		5A	6A
12:00-12:50	7B	8 TSA		7A	8 TSA
12:50-1:00	Dismissal/Lunch	Dismissal/Lunch		Dismissal/Lunch	Dismissal/Lunch
1:00-1:30	Lunch	Lunch		Lunch	Lunch
1:30-3:30	Planning*	Planning*		Planning*	Planning*

\*Planning time will include some scheduled meetings, instructional collaboration, and professional learning.

# The Hybrid Instructional Plan

---

## Reduced LAP Model (The Skinny LAP)

- All second semester LAPs will be reduced in size from the original LAP model of 7 graded assignments.
- Middle school LAPs will vary between core classes and elective classes.
  - Core (English, History, Math, Science) LAPs will have a maximum of 5 graded assignments: 2-3 activities, 1 formative, 1 summative
  - Exploratory LAPs will have a maximum of 3 graded assignments: 1 activity, 1 formative, 1 summative

# The Hybrid Instructional Plan

---

## Reduced LAP Model (The Skinny LAP)

- The second semester LAPs will be designed to support synchronous instruction and will no longer be developed as asynchronous learning modules. Students will be expected to attend class to learn. LAPs can include synchronous instructional activities (such as short, embedded videos, guided practice activities, other instructional activities, and assessments), however the LAP should not replace the teacher as the delivery of instruction.
- Asynchronous work assigned between class meetings should be included in the Canvas LAP modules. Work should be done asynchronously between each class meetings.
- All graded assignments should have due dates in Canvas. Students will be expected to complete assignments on time and teachers will clearly communicate deadlines and expectations for completion of work.