



PARKLAND NEWSLETTER

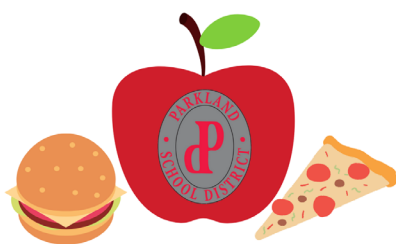
VOLUME 53 NUMBER 2
JANUARY 2021

LOOK INSIDE FOR:

- KINDERGARTEN/NEW STUDENT REGISTRATION INFORMATION
 - SUPERINTENDENT'S MESSAGE
 - SCHNECKSVILLE ELEMENTARY RENOVATIONS
 - SENIOR CITIZEN'S UPDATE
 - STAFF AND STUDENT SPOTLIGHT
 - EQUITY & INCLUSION REPORT
 - FOUNDATION HIGHLIGHTS
 - NATIONAL MERIT SEMIFINALISTS
- And Much More!

FREE MEAL PROGRAM EXTENDED THROUGH JUNE 11

Free Breakfast & Lunch for All Students



for the student ID. Every child is eligible to participate as there are no income thresholds or requirements to take part. Questions concerning the program should be directed to Lori Seier, Director of Food Services, at 610-351-5670 or seierl1@parklandsd.org. Note: A la carte menu items are still available for purchase and can be paid for with money in student MySchoolBucks.com accounts in Parkland school cafeterias.

This entire school year, under a US Department of Agriculture (USDA) Program, all Parkland residents ages 2-18 are eligible to receive free breakfast and free lunch on school days for the remainder of the school year. The USDA has explained that the Free Meals Program ensures all children have access to nutritious food during the pandemic. Parkland has also implemented a FREE "Meals to Go" program, which includes breakfasts and lunches for an entire school week for students. Families pick the meals up on Wednesdays between 10-11 AM at the school of their choice. To participate, one only needs to fill out the order form at www.parklandsd.org/mealstogo between 9 AM Thursday and 9 AM Sunday each week for pick-up the following Wednesday. The form asks for student ID#s, but if your child is not a Parkland student, simply enter 000000

SUPERINTENDENT SNISCAK ANNOUNCES RETIREMENT

This October, Parkland School District Superintendent Mr. Richard T. Sniscak, announced his plans to retire at the end of the 2020-21 school year. The announcement marks a 37-year career in public education. He has served as Parkland's Superintendent since 2011.

Mr. Sniscak made the announcement to give the Parkland Board of School Directors ample time to find a replacement and ensure a smooth leadership transition. The Board, in turn, has hired consultant Dr. Gary P. McCartney, who also happens to be a past Parkland Superintendent, to lead the search. A community survey was conducted in the fall to garner stakeholder feedback which was posted on social media and shared with staff and student families via email. In the early part of the New Year, Dr. McCartney is working with the School Board to screen applications and begin the interviewing process with plans to appoint someone by spring.

By the time he retires, Mr. Sniscak will have served 26 years in the Parkland School District. During his tenure, he is credited with:

- Implementing full-day Kindergarten.
- Giving every Parkland student a Chromebook to help foster equity and 21st century skills.
- Overseeing the construction of Veterans Memorial Elementary School and renovations of Kratzer and Schnecksville Schools.
- Navigating a crippling economic downturn in 2008 as well as the current pandemic while maintaining good financial stewardship that has helped the District maintain its prestigious AA Bond rating.
- Creating partnerships with local hospital networks that resulted in learning opportunities for students including a first-time-in-Pennsylvania high school human knee dissection experience for Parkland High School students.
- Launching hands-on learning Project Lead The Way Biomedical and Computer Science Programs at Parkland High School.
- Demonstrating a commitment to equity and understanding through the District's Multicultural Awareness Committee and Equity and Inclusion Committees.
- Establishing food pantries in Parkland's three secondary schools to bridge hunger gaps.
- Upgrading school safety in the form of video cameras, alarm bells, secured vestibules and communication systems.
- Helping to establish the Parkland Education Foundation in 2011 resulting in donations that have totaled more than \$1M.



**Sober Driving Today,
Alive Tomorrow!**

**Make the right choice.
Don't drink and drive.**

Robert B. Heintzelman, Supervisor
4906 Route 309 Schnecksville
610-799-3125
www.heintzelmancares.com

Heintzelman
FUNERAL HOME
INC.




**Your Center for
Oral Surgery & Dental Implants**

ALLENTOWN • BETHLEHEM • EASTON • STROUDSBURG
610-865-8077 • www.stlukesoms.com

Experienced. Friendly. Professional Tax Solutions.

Call Today for a **FREE** consult! 484-274-6979



**TILGHMAN
ACCOUNTING + TAX
SOLUTIONS**

Tax Preparation • Bookkeeping • Payroll
• IFTA • Sales Tax

TilghTax.com



CHECK OUT PARKLAND TV!
A **FREE** public access channel provided by RCN Cable
on Channel 65 and Service Electric Cable on
Channel 264 or 102.9 for digital subscribers.

District Asbestos & Environmental Plans can be found
online at:

www.parklandsd.org/departments/school-services/



**The Neffs
National Bank**
A Subsidiary of Neffs Bancorp, Inc.
STRENGTH. TRUST. COMMUNITY.

Neffs Office

5629 Route 873
Neffs, PA 18065
(610) 767-3875

Walnutport Office

211 S. Best Avenue
Walnutport, PA 18088
(610) 224-2265



www.neffsnatl.com



Like us on
Facebook!



Follow us
on Twitter!





St. Luke's Pediatric Specialists

Our family is growing
for your family.

Orthopedics

Nicholas Grimm, DO

Gastroenterology

David Blanco, MD

General Surgery

Shaheen Timmapuri, MD, MBA

Cardiology

Elizabeth Adams, DO
Mark McGill, MD

Pulmonology

Ashish C. Shah, MD

Endocrinology

Pamela Abrams, MD

Nephrology

Tecile Andolino, MD

Neurology

Elizabeth Corbo, MD

Developmental Pediatrics

Stephanie Straka, DO, FAAP

Psychiatry

Howard Levin, MD

Plastic Surgery

W. Michael Morrissey, MD

Dermatology

Andrew Krakowski, MD

Inpatient Pediatrics

Laurel Erickson-Parsons, MD, FAAP

Pediatric Intensive Care Unit

Christopher Plymire, MD

Neonatal Intensive Care Unit

Kimberly Costello, DO

Radiology

Yeamie M. Kousari, MD

Anesthesiology

Stephen Chaponis, MD



When it comes to your children, you want to provide them with the best... in all aspects of life, especially their health care. That's why St. Luke's growing pediatric services provides the quality and compassionate care you expect for your child, right here, close to home. Choose a St. Luke's pediatric specialist... **the care you trust now more than ever.**

StLuke's
Pediatrics

Caring for Your Future.

sluhn.org/pediatrics
1-866-STLUKES (785-8537)



New Pediatric Intensive Care Unit!



SUPERINTENDENT'S MESSAGE

Dear Parkland Community,

In November, school districts were given a choice to go fully remote with instruction while the county stays in the category of "substantial transmission of COVID-19" OR remain open for in-person instruction, but only if they agreed to comply with the state's COVID-19 health and safety mitigation efforts and stay within newly identified thresholds for confirmed COVID-19 cases within a school building.

On November 25, Parkland announced its decision to remain open for hybrid in-person instruction and signed the attestation form that promises to comply with the ordinance. There were several reasons for this decision. First and foremost, our schools have proven to be a safe and structured environment where in-person learning can occur. The daily wellness screener forms that staff and families fill out have been helpful, and in turn, Parkland School District nurses have been able to quickly identify cases, exposures and close contacts; instruct people to quarantine and seek medical assistance (as appropriate); and make timely decisions for sending students and staff home. This has mitigated the spread of the virus, which has always been our objective.

Our current data indicates that, because of our strong health and safety plans, children and staff are safe in our schools, even when there are rising cases in our community. We can say with confidence, when our District Health and Safety Plan is followed, we have not seen evidence of in-school spread of the virus to students or staff. This does not mean it will never happen. But it does mean that our District Health and Safety Plan is effective. Additionally, we believe it is important to keep the continuity of learning and routine that our hybrid model has provided thus far this year for students and parents.

Parkland was already complying with face covering, social distancing and cleaning measures, so the main item that changed for us under the attestation agreement to remain open for in-person instruction was to follow newly laid out thresholds surrounding confirmed COVID-19 cases that impact a school.

A COVID-19 confirmed case includes any individual who is physically present in a school setting for work, instruction, sports, extra curricular activities, or any other reason, during an infectious period. The infectious time period is defined as either 2 days before onset of symptoms or 2 days after a positive test in an asymptomatic person.

In buildings with fewer than 500 students (includes all Parkland Elementary Schools, except Parkway Manor, which has more than 500 students):
2-4 COVID-19 cases within a rolling 14-day period require a 3-7 day closure
5+ COVID-19 cases within a rolling 14-day period require a 14-day closure

At Parkway Manor (a school with 500-900 students):
4-6 COVID-19 cases within a rolling 14-day period require a 3-7 day closure
7+ COVID-19 cases within a rolling 14-day period require a 14-day closure

At Springhouse, Orefield and Parkland High School (schools with 900+ students):
6-10 COVID-19 cases within a rolling 14-day period require a 3-7 day closure
11+ COVID-19 cases within a rolling 14-day period require a 14-day closure

In all cases stated above, if case investigations, contact tracing and cleaning and disinfecting can be accomplished in a faster timeframe, the length of closure time may be shortened. The closure determination is made in consultation with the Department of Health.

Prior to winter break, using the criteria above, along with guidance from the Department of Health, Parkland had school closures occur at Ironton, Cetronia, Orefield Middle School, Schnecksville, and Parkland High School. We monitor the situation daily and everyone's compliance in filling out the wellness screener forms helps us immeasurably. School nurses have typically been getting into contact with any staff or family member who answers "yes" to any of the six questions on the wellness screener forms by 1 PM. Anyone who does not receive a phone call by 1 PM is encouraged to call the school nurse to report information.

With regard to the Governor's announcement of new and tighter restrictions on activities, all athletic and extra-curricular activities were suspended December 12th through January 4th. The East Penn Athletic Conference has already postponed the start of interscholastic competition to January 15th.

In Parkland, the indicators above are some examples of the various factors we must consider to maintain in-person instruction. The health and safety of our staff and students remains our top priority. The amount of people quarantining or sick may force a school closure simply because we don't have enough staff on-hand to keep a building open safely. There is a vast substitute shortage across the state, and Parkland is challenged by this shortage as well. We all must continue to remain as resilient and flexible as possible.

In closing, I want to share that I have been so proud of how our staff has remained laser-focused on our students. I'm also so grateful to the Parkland families who have been supportive of our staff as we navigate this very challenging situation. I realize that this pandemic has caused a lot of anxiety. As we continue to navigate the twists and turns that COVID-19 brings us, know that we are in this together and will continue to make data-based decisions that keep student and staff safety, health, education and well-being as our top priority alongside the guidance of the Department of Health and local healthcare officials. Please reach out to any of our staff with concerns or questions and continue to visit the resources we have cultivated for you on our dedicated webpage: www.parklandsd.org/coronavirus.

Sincerely,
 Richard T. Sniscak
 Superintendent of Schools



NEW SCHOOL BOARD PRESIDENT AND VICE PRESIDENT

CONGRATULATIONS are extended to David Hein and Carol Facchiano on their elected positions. Carol will serve as Vice President of the School Board and David Hein will serve as the President of the School Board in 2021. Additionally, David Hein was voted as the new President Elect of the Pennsylvania School Boards Association and was elected to serve as the Vice President of the Joint Operating Committee at the Lehigh Career and Technical Institute. David and Carol are pictured at left. A special thank you is extended to Lisa Roth for her leadership as School Board President for the last two years.



Safe is good.
Safer is not putting
off your doctor
appointments or
screenings.

Stay safer. If you have an appointment, keep it. If you need an appointment, make it. The earlier you address potential problems, the better your chances for a successful outcome. **To schedule an appointment, call 888-402-LVHN or visit [LVHN.org](https://www.lvhn.org).**



Your health deserves a partner.

SCHNECKSVILLE ELEMENTARY SCHOOL RENOVATION PROJECT



A new front entrance is part of the planned addition.



The final building design will be L-shaped with an outdoor learning space that includes walkways and artificial turf.



A rendering of the planned Media Center.

Parkland's Schnecksville Elementary School is undergoing extensive renovations. An existing garage has already been converted to new classroom space and upgrades in the existing building are underway, including replacement of mechanical systems. Cosmetic enhancements include new flooring, bathroom tile, paint and ceilings. A portion of the existing school will be removed, and construction of an 18,000 square foot addition is planned. New access to the school will be created off Spring Hill Road to separate bus and vehicle traffic coming in and out of the school. An outdoor learning space is part of the plan and includes walkways and artificial turf (shown on the picture). The entire renovation and addition is expected to be complete by August 2022, just in time to welcome students for the start of a new school year. You can view a fly-over simulation of the building on the Parkland School District website at: <https://schnecksville.parklandsd.org/about/renovations>.



610 - 841 - 5929

Let our family care for your family.

Family General & Cosmetic Dentistry, Oral Surgery, Implants, and Sedation.

NurtureDentalHealth.com

240 Cetronia Road #121 South, Allentown, PA, 18104



CONGRATULATIONS!



Dr. Scott Watson, Parkland Music Teacher, for winning PMEA's 2020 Citation of Excellence in Teaching Award for District 10.



Patrick Price, OMS teacher at Orefield Middle School, won the Cedar Crest College Howard L. Klopp Exemplary Teacher Award.



Congratulations to Kyleigh Duff and Humza Imam who were crowned Homecoming Queen and King!

SENIOR CITIZEN'S CORNER

AARP SAFE DRIVER TRAINING COURSE UPDATE

AARP has CANCELED all in-person events and activities until March 1, 2021. However, Smart Driver course participants who are seeking to renew or obtain a car insurance discount can take the Smart Driver online course. Register at the AARP website and get 25% off through February 28 at: www.aarpdriversafety.org
 Promo code for 25% off discount: DRIVINGSKILLS

AARP also offers a Smart DriverTEK class to help people learn about new vehicle safety technologies. Visit www.aarp.org/SDTEK for information about this new course.

THE ST. LUKE'S CHAIR & MOBILITY CLASS

Upper Macungie Township is offering a St. Luke's Chair Strength and Mobility Course for anyone suffering from arthritis, or any mobility issue. The class is led by exercise specialists specializing in improving strength and mobility. This is a low-impact chair based strength and flexibility exercise program for adults of all activity levels. It is movement-based training for persons who want to work on balance, coordination, agility and functional strength.

- Offered both virtually and in person at the Township Municipal Building
- 4-week program, on Tuesdays from 8:30 - 9:30 AM
- Dates: January 5 - 26, 2021
- \$10 for the 4-week session (4 classes)
- Go to <https://www.uppermac.org/umt-recreation/eventsprograms> and find course listed under EVENTS AND PROGRAMS

The Grandparent/Older Adult Relative Caregiver Support

Program allows older adult caregivers of children to be reimbursed for normal school and extracurricular activity expenses, along with any medical consumable supplies that may be needed for a child with medical care needs. Consumable supplies are expendable items needed on an ongoing basis to provide care to the care-receiver. Caregivers receive reimbursement for their out-of-pocket expenses.

Families may be eligible for some reimbursement to help with out-of-pocket expenses for respite care, home care services, and consumables and supplies, such as baby food, recreational activity fees, school expenses, and child care services for respite support. Prescriptions or pharmaceutical items are not included.

Eligibility: Caregiver is age 55 or older and is the primary caregiver for a child related by blood, marriage, or adoption; but not the biological parent.
 Household income is at or below \$65,513 for 2 people or \$82,537 for 3 people (scale based on 2020 income limits). The child must be age 18 or younger and reside with the caregiver.

**Lehigh
County
Aging &
Adult
Services**

610-782-3200



**Please call for
more information
and ask for the
Caregiver
Support Program**

STUDENT SPOTLIGHT



This month's spotlight focuses on Parkland's Girls Who Code Club leaders Uma Purani (11th grade), Aishwarya Suresh (10th grade), and Reva Gandhi (10th grade). They offered after school live coding sessions in celebration of Computer Science Week in December for students in grades K-12. They also created a Schoology course that consists of additional resources with the goal of developing interest in computer science. And, in February, they will once again start coding classes for students in grades 5+ across the District.

The female students put together a 1-hour lesson on Artificial Intelligence (AI) that is going to be incorporated into the 7th and 8th Grade Information Technology Curriculum. The presentation educates students about what AI is and how it will impact the economy in the future. Students will view examples of how AI is woven into our everyday lives such as through the use of Alexa, Siri and Google and other uses such as how AI enabled scientists to fast track a COVID-19 vaccine. These girls are paving the way for others in Parkland and are to be commended for being self-motivated and dedicated to mentoring throughout their tenure at Parkland. We are lucky to have them as our students!

IT'S TIME FOR KINDERGARTEN & NEW STUDENT REGISTRATION



IF YOU HAVE A CHILD WHO IS TURNING 5 YEARS OLD PRIOR TO SEPTEMBER 1, 2021, IT'S TIME TO REGISTER FOR KINDERGARTEN.

Similarly, if you have a child who is enrolled in a private kindergarten program who you are planning to enroll for the first time in Parkland Schools for first grade, we invite you to register now. Families can begin calling their incoming kindergarten student's school to obtain a registration link.

Don't delay, please call now in order to help us prepare our staffing needs.

INCOMING KINDERGARTEN/ ELEMENTARY STUDENTS CONTACT YOUR SCHOOL

SCHOOL	PHONE	EMAIL
Cetronia	610-351-5860	webberm@parklandsd.org
Fogelsville	610-351-5800	talhelmb@parklandsd.org
Parkway Manor	610-351-5850	berkheimer@parklandsd.org
Kratzer	610-351-5820	carlj@parklandsd.org
Kernsville	610-351-5840	bronzol@parklandsd.org
Ironton	610-351-5810	heaterc@parklandsd.org
Fred J. Jandl	610-351-5880	stimpfles@parklandsd.org
Schnecksville	610-351-5830	shortsl@parklandsd.org
Veterans Memorial	610-351-5910	hertzm@parklandsd.org

INCOMING MIDDLE SCHOOL STUDENTS CONTACT YOUR SCHOOL

SCHOOL	PHONE
Orefield	610-351-5750 x61662
Springhouse	610-351-5700 x66662

INCOMING PARKLAND HIGH SCHOOL STUDENTS CONTACT PHS

NAMES	PHONE	EMAIL
Last Names A-LAK	610-351-5610 x73432	jamesc@parklandsd.org
Last Names LA - Z	610-351-5610 x73433	ciciliotk@parklandsd.org

Registration for incoming high school students for a Fall 2021 start who are NOT CURRENTLY ENROLLED IN PARKLAND SCHOOLS is scheduled for February 22 and 23, 2021. The evening registration includes virtual appointments with Guidance Counselors to help students make course selections.

Post Secondary
Planning
Parent Meeting



POST SECONDARY PLANNING PARENT MEETING

The link to the Post Secondary Planning PHS Parent Meeting is here! Great information is shared about how to guide your students to plan for their years after graduation by our in-house Guidance Office expert, Mr. Eric Roberts:
<http://bit.do/PHSPostSec>

WHICH SCHOOL WILL MY CHILD ATTEND?

Find your home on our
SCHOOL LOCATOR TOOL
to view your school.

IT'S EASY! Visit www.parklandsd.org and click on the button at the bottom of the page that looks like this:

SCHOOL LOCATOR 2020-21

Course Selection
Meeting for
8-11th Grade
Parents



PHS COURSE SELECTION PARENT MEETING

Mark your calendar to view the anticipated Annual PHS Course Selection Parent Meeting online, which will debut on January 5th in lieu of the regularly scheduled in-person meeting. Parents will be able to ask questions via a Google form and answers to all questions will be posted online.

This must-watch event helps guide parents in selecting courses for students who will be at PHS in the fall. With more than 100 electives and a vast array of courses to choose from, our high school course selection booklet is a source of pride in this community, but it can also feel overwhelming. The annual meeting helps parents sort through all of the content and special programs that are available. Find the links to all of the presentations at

<https://tinyurl.com/PHSvirtualparentnight>

SCHOOL-BASED THERAPY

St. Luke's University Health Network is offering the YESS! (Your Emotional Strength Supported) School-Based Therapy Program in Parkland High School and both middle schools. The program provides integrated mental health treatment year-round for adolescents and teens with the goal of helping students overcome emotional, behavioral or social problems that interfere with success at school and at home. YESS! serves students in a familiar setting, offering minimal interruption to their school day. Therapists work with students and include collaboration with school staff and parents to help to reduce disruptive behavior and improve self-monitoring skills. If you are interested in learning more, please reach out to your child's Guidance Counselor.

EQUITY AND INCLUSION COMMITTEES MAKING PROGRESS



The District launched an Equity and Inclusion Plan for the current school year in September and we are happy to share our progress. Here are some updates on what has transpired since the start of the school year.

This past fall, District staff were trained on “Restorative Practices” which focuses on proactively building and strengthening relationships through regular large and small group conversations that focus on listening and interpersonal relationships. Instead of a focus on punitive discipline, student engagement includes a regular practice of positive behavior reinforcements that include regular group and personal conversation. Conversations can be used for people to introduce topics, share personal experiences and address conflict and tension. When held regularly, conversation promotes equity, trust, and empathy.

A team of administrators is analyzing ways to attract a diverse candidate pool for open positions. The group is discussing why employing diverse candidates is important and looking at what colleges are doing to attract diverse students in the field of education so that they can hone in on ways to engage and attract graduates for open positions at Parkland.

The Curriculum and Instruction Department is working with teachers at the elementary and secondary level to formulate ways to weave contemporary historical content into the curriculum as well review materials that explore multiple cultural perspectives on events that are already part of the English and Social Studies curriculum.

Two cohorts started meeting in the fall with consultant Ken Shelton who is leading courageous conversation that discusses race, privilege, bias and equity. Thus far, the staff cohort has met three times and the community cohort met once with another meeting scheduled for January. Anyone interested in learning more about this topic is invited to check out a list of resources that the committee has gathered to expand our thinking to provide equitable opportunities for all students.

You can view and listen to the December 15th School Board Workshop Equity and Inclusion Update as well as view our curated list of things to read, watch and listen to at www.parklandsd.org/equity.

TECH TOOLS BECOME STUDENT’S COMMON VOCABULARY

Kami e-hallpass



Teachers have been using some spectacular tech tools to help them navigate the pandemic. In addition to Schoology, the District’s online learning management system, here’s a synopsis of our teachers’ favorite tools. Ask your kids to tell you more about them - as these tools are part of their regular vocabulary:

KAMI - Kami is an online document annotation and markup tool. Students can highlight, underline, and strikethrough text in PDF and other document formats. They can also add text boxes, shapes, and images. No printer, no problem! This is how most Parkland students turn in homework. Each day, there are approximately 1.7 million annotations recorded in Kami by students.

NEARPOD - Nearpod helps educators make any lesson interactive whether in the classroom or virtual. The concept is simple. A teacher can create interactive presentations that can contain Quiz’s, Polls, Videos, Collaborate Boards, and more. Students can type their response or can actually draw on Nearpod to show their work in writing or drawings. There have been 89,620 student Nearpod sessions since the start of the school year.

EDPUZZLE - EdPuzzle allows teachers and students to create interactive online videos by embedding either open-ended or multiple-choice questions, audio notes, audio tracks, or comments on a video. Teachers have received 19,500 Edpuzzle video lesson submissions since September.

SCREENCASTIFY - Teachers use Screencastify to record themselves over a PowerPoint or any other lesson so that students can watch recorded lessons from home. Staff and students have created 42,149 screencastify presentations during the first three months of the school year.

EHALLPASS - eHallpass keeps track of how many passes have been given out school-wide in our largest schools - OMS, SMS and PHS. During the pandemic, it has been helpful for tracking how many people have been issued passes to see the school nurse, go to the bathroom, visit the library, and other areas of the building, so that school staff can ensure physical distancing guidelines are maintained throughout the day. If too many people are in any one area, students must wait for a pass to become available to go to that room. 41,311 passes have been issued since September 1st.

GOOGLE ENTERPRISE - Perhaps our most widely used tool, Google Enterprise has rolled out many upgrades since the start of the year. Our teachers love to use Google Meets as a way to “zoom” live with students and can take polls and incorporate a whiteboard that can be drawn on by any Chromebook device during the meeting. Sessions can also be recorded and breakout rooms allow for small group collaboration among classes.

SORA - SORA is an online catalog of free ebooks and audiobooks available to all students K-12 through CLEVER. The books are based on elementary, middle and high school collections. Students sign in through CLEVER and choose ebooks that are instantly available, or can place a hold if the book is out. The books are purchased through a Library Consortium that curate the collections. Pictures of the book covers make it fun and easy to browse.

17 PARKLAND HIGH SCHOOL STUDENTS NAMED 2021 NATIONAL MERIT SEMIFINALISTS



Photos courtesy of Frank Mitman, Digital Photographic Imaging

The National Merit® Scholarship Program is an academic competition that recognizes the 50,000 highest Preliminary SAT/National Merit Scholarship Qualifying Test (PSAT/NMSQT®) scores in the nation out of approximately 1.5 million students who take the test each year. Of the 1.5 million entrants, approximately 50,000 with the highest PSAT/NMSQT® Selection Index scores qualify for recognition in the National Merit® Scholarship Program as either Commended Students (about 34,000) or Semifinalists (highest 16,000).

The following 17 Parkland High School students were selected as Semifinalists and have an opportunity to continue in the competition for 7,600 Merit Scholarship awards worth \$33 million. They are pictured left to right from the top as follows:

SUCHIR AGARWAL - PHS Orchestra Concertmaster, Honors Orchestra, All-State Orchestra, Co-Captain of the Chess Team, and Co-President of the Chess Club, Future Business Leaders of America (FBLA), Science Fair, the Math, Spanish, Tri-M Music, and National Honors Societies. He plans to major in Computer Science at Carnegie Mellon University.

TARAN ANANTASAGAR - Parkland STEMM, Environment Club, Physics Club, Science Fair, FBLA, National, Math, English, Science and Spanish Honor Societies, Coca-Cola Scholar Semifinalist, National AP Scholar. He plans to pursue Computer or Earth Science in college.

PRANAV BALABHADRA - Chess team Co-Captain, STEMM Club Co-Vice President, History Day, Science Fair, Science Olympiad, National Honor Society, FBLA, Volleyball Team, Coca-Cola Scholar Semifinalist. He plans to pursue a career in Bioengineering.

MEAGHAN CRITES - Robotics (Engineering) Club, Science Olympiad, French, Math, English, and National Honor Societies. She plans to major in Engineering.

STEPHANIE DEAN - Reading Olympics Team Captain, National, Math, English, and German Honor Societies, Ski Club, Math League and Architecture Club. She intends to major in Civil or Chemical Engineering.

ALEXANDER GANNON - Parkland Gay Straight Alliance Vice President, National, Art, Science, French Honor Societies. He may pursue Political Science at Temple University.

UDIT GARG - Club Med President, UNICEF Club Co-President, Entrepreneurship Club Co-President, Varsity Golf Team, FBLA, Science Fair, Physics Club, Math, Science, and National Honor Societies, National AP Scholar with Distinction, Congressional App Challenge Ambassador, Parkinson's Ambassador for the Davis Phinney Foundation. In college, he plans to major in Biomedical Engineering.

RAHUL INANGANTI - Conservation Club President, Scholastic Scrimmage President/Captain, Debate Team Captain, Political Science Club Vice President, Boy Scout Senior Patrol Leader, Springhouse Science Olympiad Team Coach, Science Olympiad, Science Fair, History Day, FBLA, and Health Occupations Students of America (HOSA), Broadcom Master's Science Fair Top 300, 2020 Ivy League Model United Nations Best Delegate. He plans to major in Biology and become a pediatrician.

PRATHYSHA KOTHARE - PHS Debate Team Captain, Science Fair Vice President, Women in STEMM Secretary, FBLA, Spanish, Math, English, and National Honors Societies, PHS STEP Team, MIT Research Science Institute 2020 Biochemistry Award, International Science and Engineering Fair Biomedical Engineering Award, 2020 Women Inclusion in Science, Technology, Engineering, and Mathematics (WISTEM), 2020 INSPOScience Gold Medal, NPR/WDIY radio show host, book author of "Crooked: An Anthology." She plans on focusing on Chemical Engineering and Entrepreneurship.

ANKIT LENKA - Tennis Team Captain, Lehigh Valley Music Teacher's Association Piano Award, Congresswoman Susan Wild Reelection Campaign Intern, AP Honors Scholar, Meals on Wheels Volunteer, Junior Tennis Instructor, United States Tennis Association Middle States Junior Tennis Tournament Qualifier. He is interested in pursuing Video Game Design and/or Political Science.

AKSHATHA MANJUNATHA - Math League Co-Vice President, National History Day, Science Fair, National, English, Math, Spanish Honor Societies, FBLA, Delaware Valley Science Fair 1st Place, FBLA Nationals Awards, National History Day Outstanding Entry, WEST Pharmaceutical HS Award, Dow Chemical Company Award, American Chemical Society Award and Parental Drug Association Award. She plans to major in Biochemistry or Neuroscience.

ANKHITHA MANJUNATHA - Debate Team Captain, Math League Co-President, FBLA Vice President, National, Math, English, Spanish Honor Societies, National History Day, Science Fair, Intel International Science and Engineering Fair Finalist, Delaware Valley Science Fair 1st Place Physics Award, FBLA National Awards, National History Day Outstanding Entry, National AP Scholar. She is interested in pursuing Engineering and Physics.

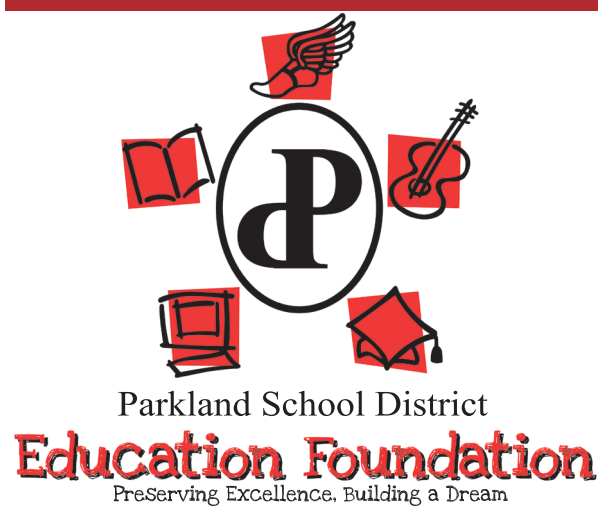
KRISHNA NARRAMNENI - Club Med Secretary, National, English and Spanish Honor Societies, FBLA, History Day and Science Fair, AP Scholar with Distinction, President's Volunteer Service 2X Award. He plans on becoming a doctor and is interested in attending the University of Pittsburgh.

SAMUEL OXFELD - Entrepreneurship Club Founder and President, Investing Club President, Mock Trial Club President, Varsity Tennis, FBLA, Political Science, Math Internship, Jewish Culture Club, AP Scholar with Distinction, FBLA Entrepreneurship State Competition 1st Place Award, National Honor Society. He plans to major in Economics.

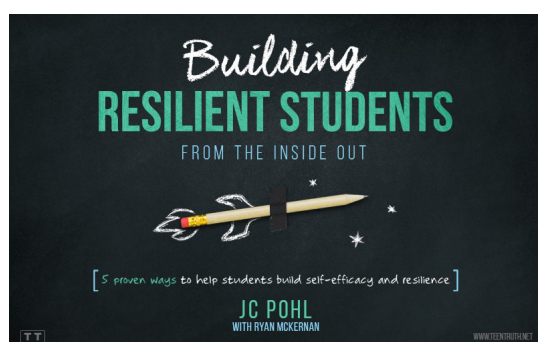
JANAM PATEL - Entrepreneurship Club Treasurer, Student Council Co-President, Club Med, UNICEF, ALCC, FBLA and Science Fair, Math, Spanish and National Honor Societies. He is interested in attending Boston University for Premedical Studies.

SRIJAN SHARMA - Math League Secretary, Scholastic Scrimmage Vice President, TedEd Club Officer, FBLA, Science Olympiad, EPC Scholastic Scrimmage 2020 Award, National Honor Society, Northern PA History Bowl Champion 2020. He'd like to study Data Science.

ALEXANDER TANG - Math League President, Tri-M Officer, PA Sinfonia Youth Orchestra Clarinet Section Leader, Region V Orchestra and Band, District 10 Orchestra, Band and Chorus, All-State Wind Ensemble, National Honor, Math and English Societies, National AP Scholar, Friends of Music Outstanding Young Artist 2x Award. He intends to major in Mathematical Economics.



Lisa Ervin
Executive Director, Parkland Education Foundation
ervinl@parklandsd.org
610-351-5572
www.parklandsd.org/foundation



GIVING BACK TO OUR COMMUNITY DURING COVID-19

During challenging times, we continue to show our strength as a school district community and figure out ways to provide our students the best opportunities in academics, the arts and athletics.

Back to School Emergency Grants

The Parkland Education Foundation continues to focus its mission to help Parkland's students and staff to inspire excellence. The Foundation's job during the pandemic has become even more important. There are so many items that have come up this past year that are not part of a normal school budget. The Foundation's response was to create Back to School Grants that allowed teachers to apply for items that help them improve instruction as they navigate both hybrid and remote learning modules. \$8,224 worth of those requests were funded. Purchases included: portable webcams, headsets with microphones, special picture song books, the filming of a virtual Holiday Chorale concert for the PHS Chorale, and Virtual Science Lab simulation software for the Parkland High School Science Department. Sean Flueso, PHS science department head had this to say about the virtual science labs, "On behalf of the high school science dept. I would like to thank all of you for supporting this! This is a great tool for us and our students in this current learning model. It will be implemented immediately and frequently."

Parent Workshop

A grant written by our very own Middle School Assistant Principals provided the Foundation the opportunity give funding to JC Pohl to do a live webinar for parents on how to build resilient students from the inside out. He gave five proven ways to help students build self-efficacy and resilience. Parents need support and resources to help their kids and this was a great program to address that.

Athletic Event Livestream

Sporting events were able to occur in the fall which was a wonderful thing for so many athletes. One of the restrictions put in place to ensure the health and safety of everyone was to only allow four fans per athlete at each event. The Parkland Education Foundation partnered with the PHS TV studio to provide Athletic Livestreaming for athletes, their families and the community at large. The Foundation knows how much sports mean to our community and was pleased to help the public at large cheer on their favorite teams. More than 150,000 minutes of athletic competition was viewed and more than 1,000 people subscribed to the stream. This program was put together by 25 Parkland High School TV Studio students and their teacher Jay Greth who all gained valuable production experience while helping the greater Parkland Community.

Food Assistance

During these difficult times, there was an increase in food insecurity throughout our District. The Foundation supported the Parkland REACH program (a program comprised of Parkland staff who help families with food, clothing and other assistance) with a Celebrate Innovation grant and community donations. With this support, the REACH team was able to deliver 100 Thanksgiving meals to families most in need this past Thanksgiving as well as provide Holiday Meals and food assistance to bridge the hunger gap over winter break.

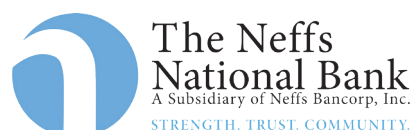
1st Annual Golf Outing

To support these events and more, the Foundation held its first ever Parkland Education Foundation Golf outing at Brookside Country Club. Our community came out in a big way and supported it by buying every sponsorship available and helping the Foundation to raise more than \$20,000.

Times are tough, but we are tougher. Foundation leaders will continue to think outside the box and rise to meet the needs of the Parkland staff and community. The Foundation is ever grateful to its community partners who have been with them every step of the way. If you would like to join in their efforts, please visit www.parklandsd.org/foundation to give or get involved as a volunteer.



The Foundation thanks its Corporate Partners in Education for the 2020-21 School Year:



IMPORTANT INFO

E-LEARNING SNOW DAYS THIS WINTER

In order to keep continuity of our educational program, most inclement weather days will become e-learning days and students should check Schoology for directions and/or assignments from their teacher(s).

By establishing continuation of school during inclement weather, there will be no school for students and staff on Friday, February 12 and Thursday, April 1. Finally, this also guarantees the last day of school for all students and staff for the 2021 school year will be Friday, June 11 (unless more than 3 major snow storm/emergency days occur).

DISTRICT-WIDE EARLY DISMISSAL DAYS (HS-MS 1 PM, Elem 1:45 PM)

Friday, January 22
Friday, April 30
Friday, May 14

PROFESSIONAL DEVELOPMENT DAYS – SCHOOLS CLOSED

January 18, March 12

Note: PHS Midterms have been canceled for this school year.



SNOW DAY GUIDANCE



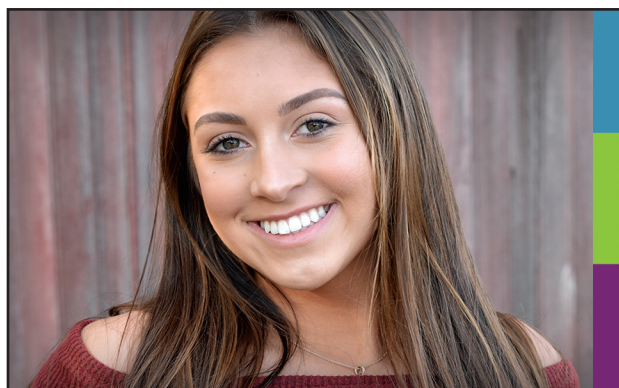
Most inclement weather days will be eLearning days for all students this school year.

What does this mean? Your student(s) will have lessons and work to complete during the school day. Teachers will notify the student of the day's schedule via Schoology.

How will attendance be taken? Attendance will be taken based on submission of assignments. Students will have up to 3 days after the snow day to submit assignments.

What if I have a question for the teacher during the snow day? Teachers will be available through email and Schoology during regular school hours on a snow day.

Will my elementary student receive their intervention time during a snow day? No, students will not have their tier 2 or 3 intervention on a snow day.



CONFIDENCE *to shine*

When you smile with confidence, it can make a huge difference. Help make your school a happier and brighter place by sharing your smile.

GHOSH
ORTHODONTICS

STRAIGHT. FORWARD. | GOGHOSH.COM

GOGHOSH.COM

NONPROFIT ORG
U.S. POSTAGE PAID
LEHIGH VALLEY PA
PERMIT# 719

PARKLAND
NEWSLETTER
1210 SPRINGHOUSE ROAD, ALLENTOWN, PA 18104

PARKLAND NEWSLETTER VOLUME 53, NUMBER 2

Published 4x annually in September, January, April and June.

BOARD OF DIRECTORS:

David J. Hein, President
Carol L. Facchiano, Vice President
Robert M. Cohen
Patrick H. Foose
David M. Kennedy
Marie Maritch
Linda Perlman-McKenna
Lisa A. Roth
Marisa L. Ziegler
Richard T. Sniscak, Superintendent
Dr. Rodney R. Troutman, Assistant Superintendent
Tracy E. Smith, Assistant to the Superintendent for Operations
John A. Vignone, Board Secretary/Dir. of Business Administration
Nicole Mehta McGalla, Editor/Dir. of Community Relations & Development
www.parklandsd.org

NONDISCRIMINATION IN PROGRAMS AND EMPLOYMENT POLICY

In accordance with TITLE VI, TITLE IX, Section 504 and the Americans with Disabilities Act, the Parkland School District does not discriminate either in the educational or vocational programs and activities which it operates or in the employment of personnel, on the basis of sex, handicap, disability, race, color, national origin, age, or religion. If you are physically or mentally disabled, visually or hearing impaired, you may qualify for special services/instruction/equipment modifications so you can successfully complete the education program or participate in activities. All inquiries concerning this policy/questions regarding specific programs, services, and facilities for the disabled should be directed to the District Equal Rights Officer, Assistant Superintendent, Parkland School District, 1210 Springhouse Road, Allentown, PA at (610) 351-5505.

**TO ADVERTISE IN THIS PUBLICATION,
PLEASE CALL NICOLE AT 610-351-5630.**