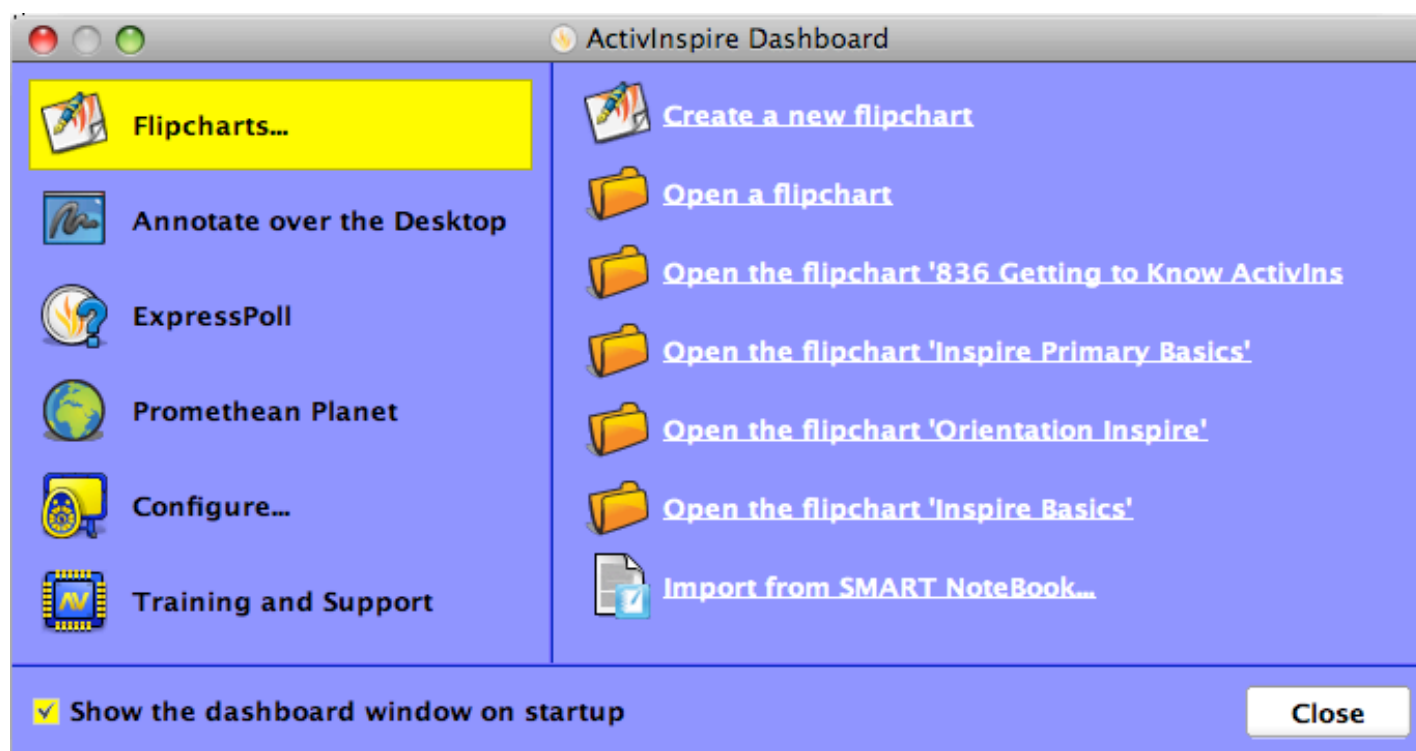





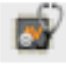


# ActivInspire- Primary Quick Guide



-  ➤ **Flipcharts** – Allows you to open a new flipchart, open a saved flipchart, open previously opened flipcharts
-  ➤ **Annotate over the Desktop** – Allows you to use all of ActivInspire’s tools on top of any document or software open on your desktop
-  ➤ **ExpressPoll** – Activates your Learner Response Systems (ActiVotes or ActiExpressions). This button is also available on your toolstrip.
-  ➤ **Promethean Planet** – Quick link to [www.prometheanplanet.com](http://www.prometheanplanet.com) where under the Resources Tab, you can complete a search to download flipcharts that teachers and edit it to make it your own.
-  ➤ **Configure**- Under this tab, you can 1.) Register your Devices (ActiVotes, ActiExpressions, ActiSlates, ActiViews) 2.) Manage your Profiles, which has to do with customizing your toolstrip 3.) Check for new software updates 4.) Change from ActivInspire-Studio mode to ActivInspire- Primary mode by clicking the box at the bottom then closing and re-opening software.
-  ➤ **Training and Support**- Quick link to [www.prometheanworld.com](http://www.prometheanworld.com) where you can find professional development opportunities and free courses to learn the ActivInspire software.

# Browser Panel



Object Browser  
Notes Browser  
Properties Browser  
Action Browser  
Voting Browser

## Highlighter

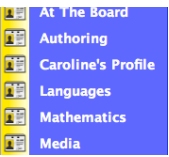
## Pen

## Erasers



## Color Palette

# Toolstrip



- Main Menu
- Desktop Annotate
- Page Navigation Arrows
- Start/Stop Voting
- Select Arrow
- Pen Tool
- Shape Tool
- Insert Media
- Resource Browser
- Clear Tool
- Undo Tool
- Switch Profiles
- Desktop Tools
- Express Poll
- More Tools
- Fill Tool
- Connector Tool
- Text Tool
- Page Browser
- Reset Tool
- Redo Tool

## Text Edit Menu



# Marquee Handles



Freely Move Object  
Rotate Object  
Object Edit Menu  
Translucency Slider  
Group/Ungroup Objects  
Bring Object Forward  
Bring Object Backward  
Duplicate Object  
Increase Object Size  
Decrease Object Size  
Edit Shape Points