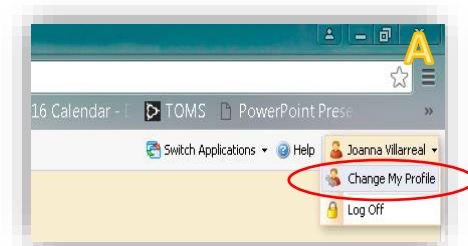


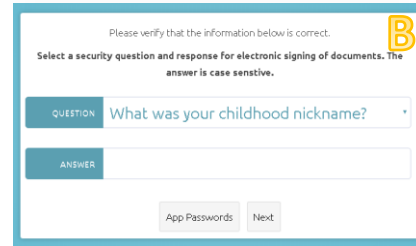
eduphoria! Formspace

Steps to Enable Electronic Signature

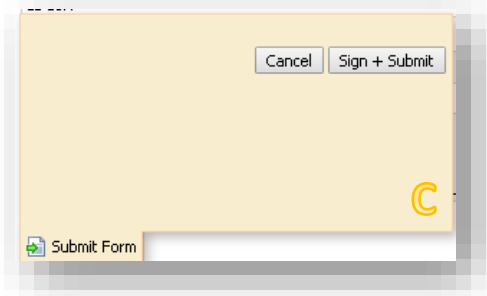
A Click on the down arrow next to your *name* (top right hand corner)



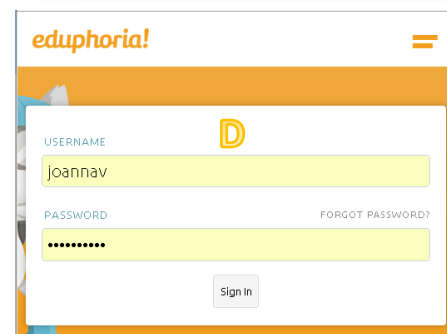
B Click on *Change My Profile*. Click on *Next* 2 times.



C Once you complete the form click on *Submit Form* and then click on *Sign + Submit*



D Enter your credentials and click on *Sign In*



Done.

