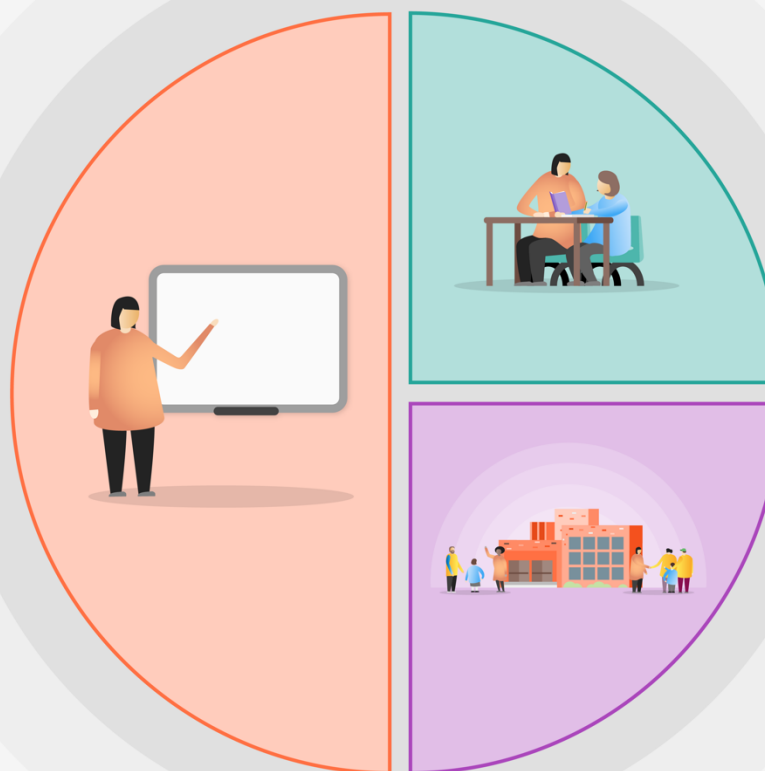


1 Teaching

- Curriculum re-sequenced using low stakes assessments, to ensure threshold concepts are revisited and any gaps retaught.
- Secure excellent teaching through High Performance Learning (HPL) and Sydenham Teacher Habits resulting in improved self-regulation and metacognition
- Embed retrieval practice to ensure all students, and in particular disadvantaged students, experience success and celebrate the acquisition of knowledge.
- Develop the Inclusive Curriculum across a range of subjects and the pastoral programme
- Engage all teachers in the effective use of data to identify underachievement and diagnose personalised next steps
- Monitor and evaluate outcomes and quality of implementation, using the outcomes to plan for next year
- Deliberately reduce workload (e.g. reduced meetings) to aid staff wellbeing and enable high-quality responsive teaching.
- Core and optional CPD programme planned to focus on school's four priority areas and for personalised professional development



2 Targeted academic support

To enable improved access to the curriculum:

- English and maths 6th form intervention
- Plan targeted interventions in all subjects for Year 11 and 13
- English and maths one-to-one tuition for Year 11
- Identify Year 7 NSR cohort using CATs tests
- Launch Ruth Miskin 'Fresh Start' Programme to support Year 7 literacy catch up deploying TAs
- Implement mastery learning in maths
- Plan targeted pastoral mentoring

3 Wider strategies

To enable access to a blended learning model:

- Ensure our most vulnerable students have priority access to classroom teaching and online materials.
- Ensure pastoral contact home for disadvantaged students also identifies barriers to engagement due to technology or a lack of other forms of support.
- Provide ongoing technical support
- Provide CPD/coaching to ensure teachers are focused on closing gaps for disadvantaged students.