



Construction Update

Board Meeting December 3, 2020

2018 BOND UPDATE

- Field Middle School

Vivian Field Middle School

Project: 2020 - 20 Year Renovation

At: Vivian Field Middle School

Architect: Huckabee

Contractor: Jackson Construction

GMP: \$31.6MM

Progress: Construction - 35%

Completion Date: August 2021



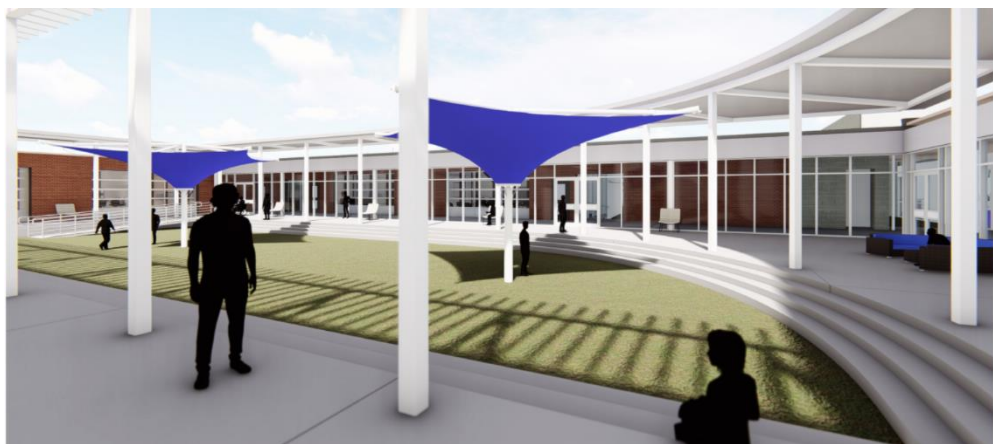
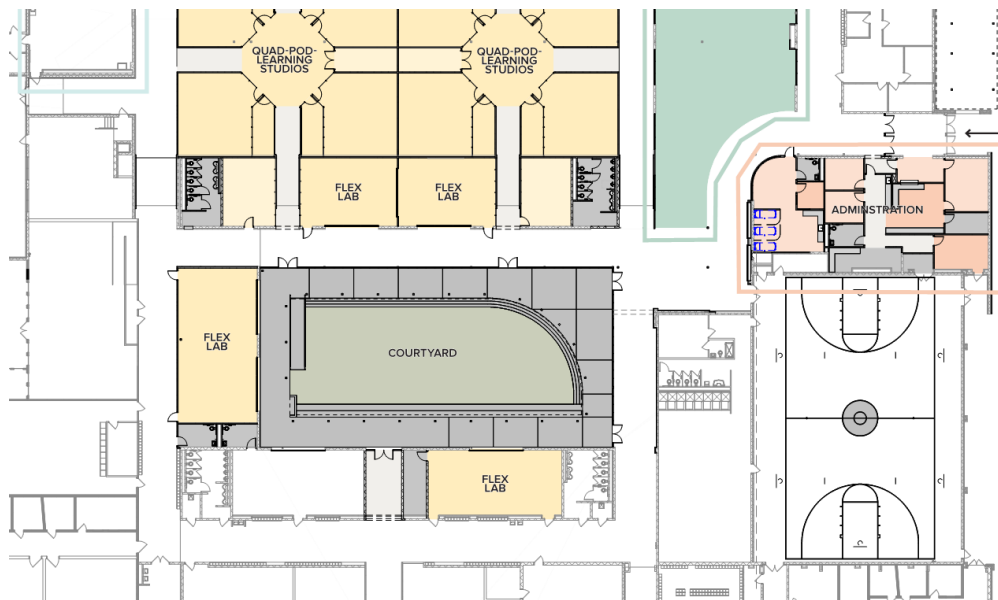
Vivian Field - 20 year renovation

Design May 2019 - May 2020

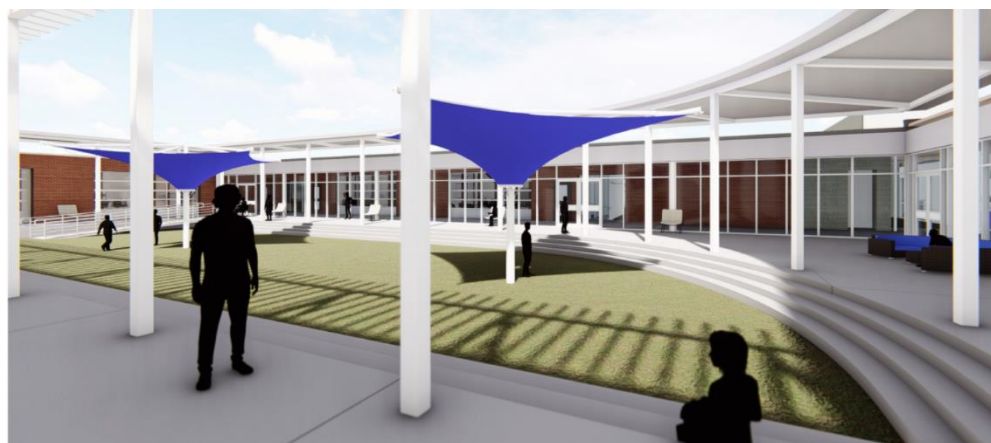
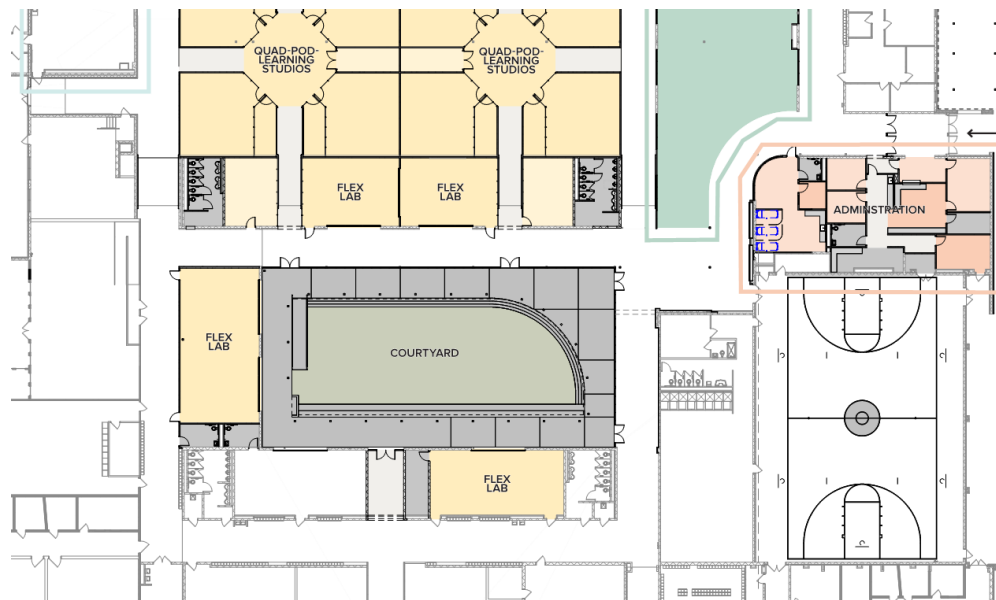
Construction May 2020 - August 2021



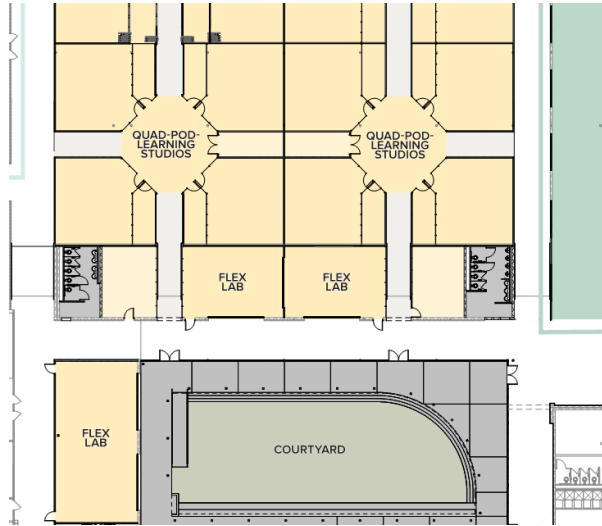
Vivian Field Middle School



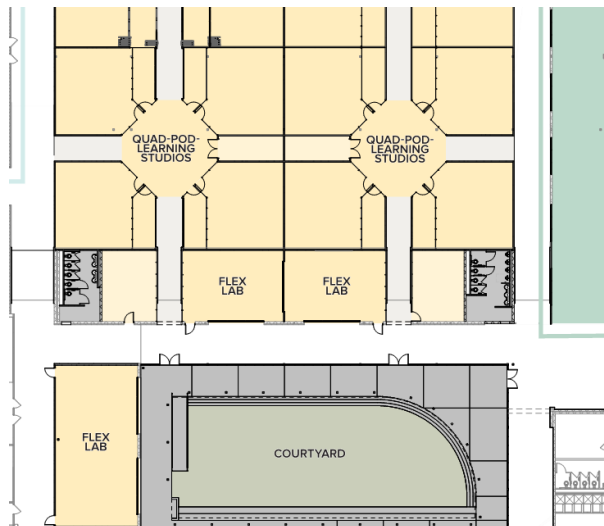
Vivian Field Middle School



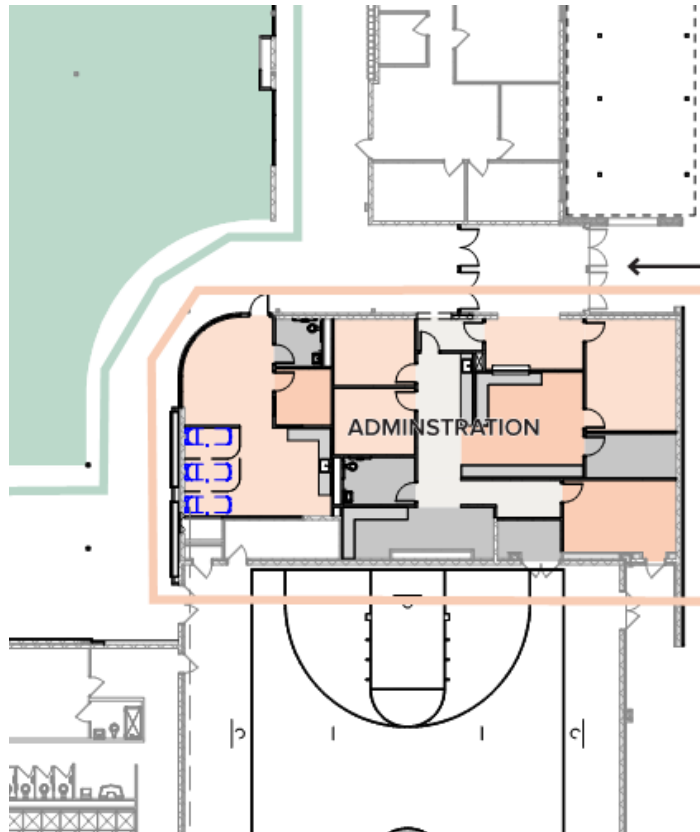
Vivian Field Middle School



Vivian Field Middle School



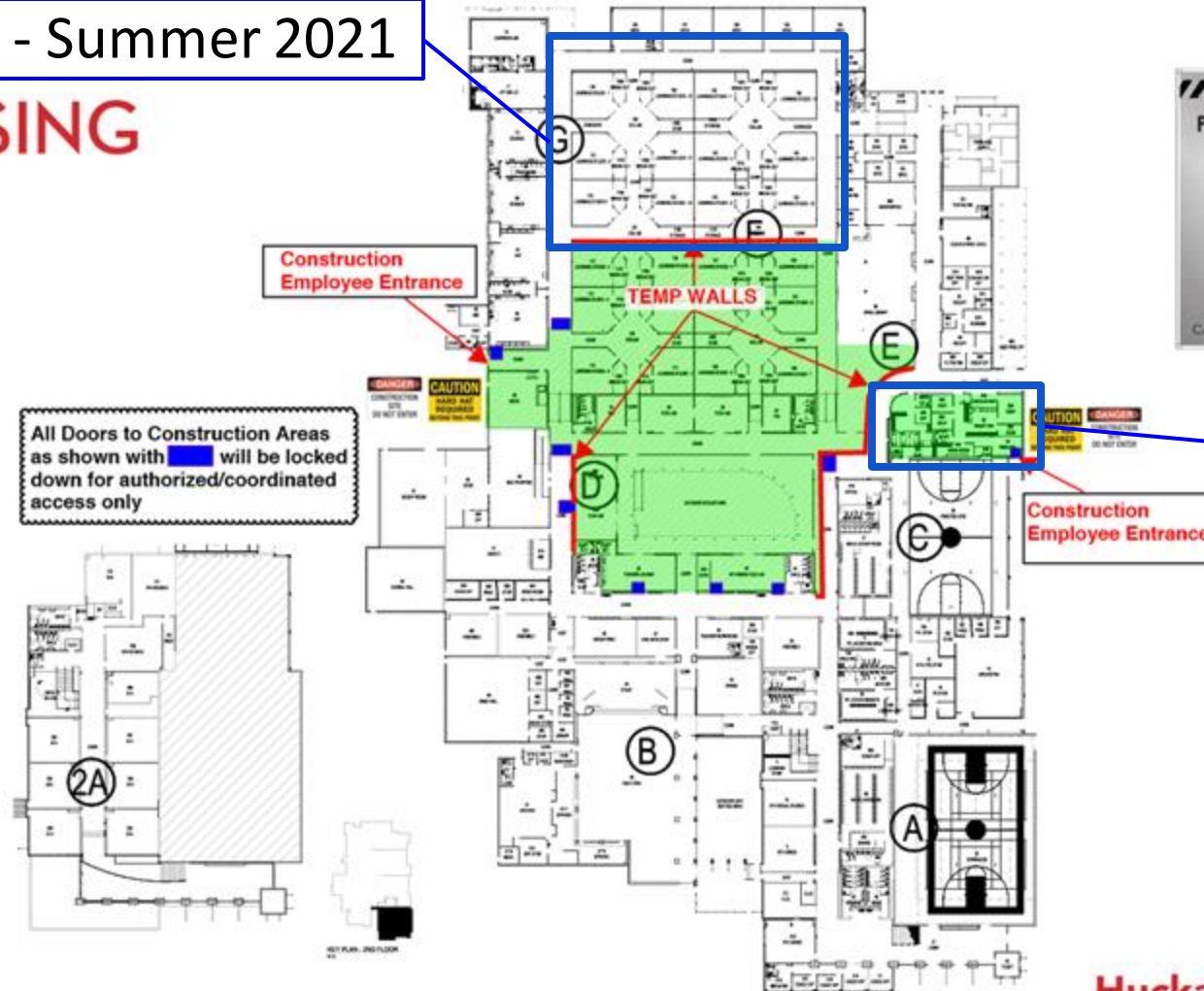
Vivian Field Middle School



Vivian Field Middle School

Spring - Summer 2021

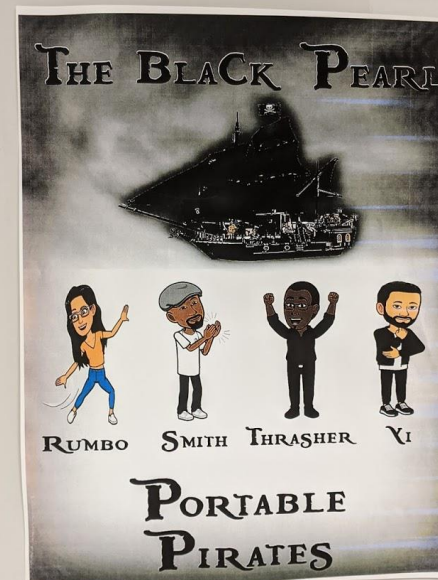
PHASING



Move the entry over in February



Vivian Field Middle School



2018 BOND UPDATE

- Turner High School

R.L Turner High School

Project: 2020 - Maint. & CTE Reno

At: R. L. Turner High School

Architect: Huckabee

Contractor: Jackson Construction

GMP: \$32.9 MM

Progress: Construction - 37%

Completion Date: August 2021

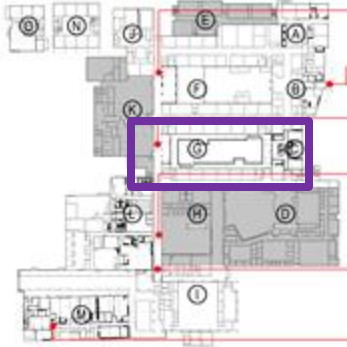


R. L Turner - Maintenance & CTE Renovation

Design May 2019 - May 2020

Construction May 2020 - August 2021

R.L Turner High School



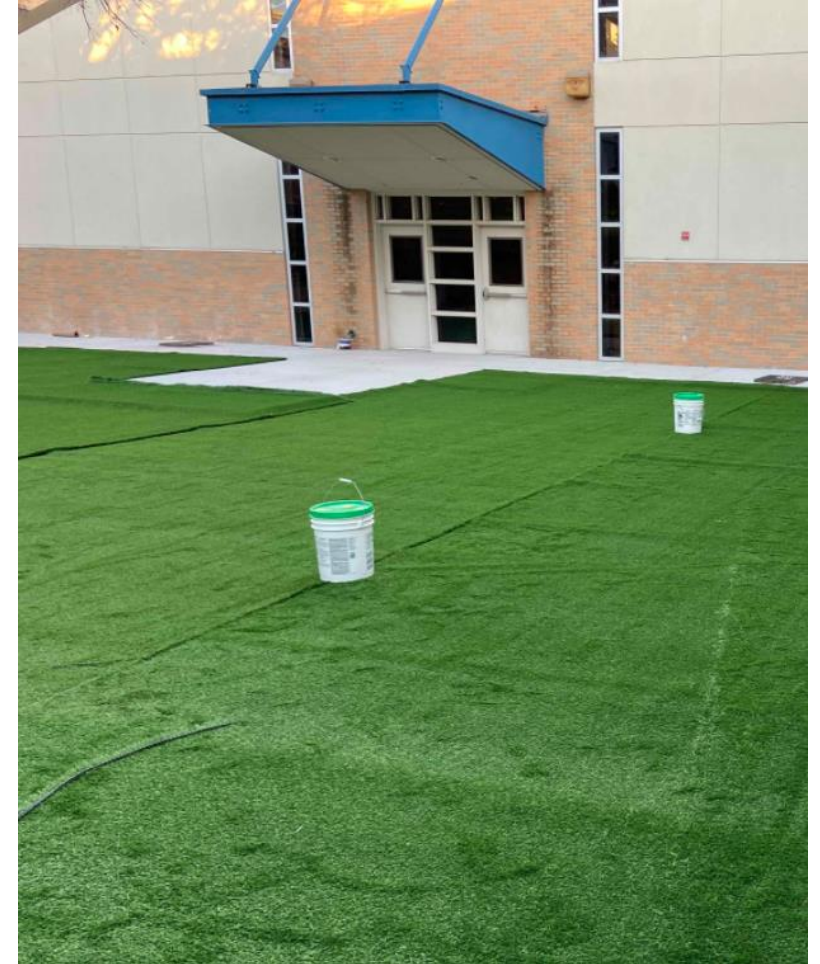
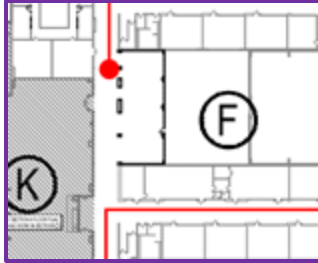
Courtyard



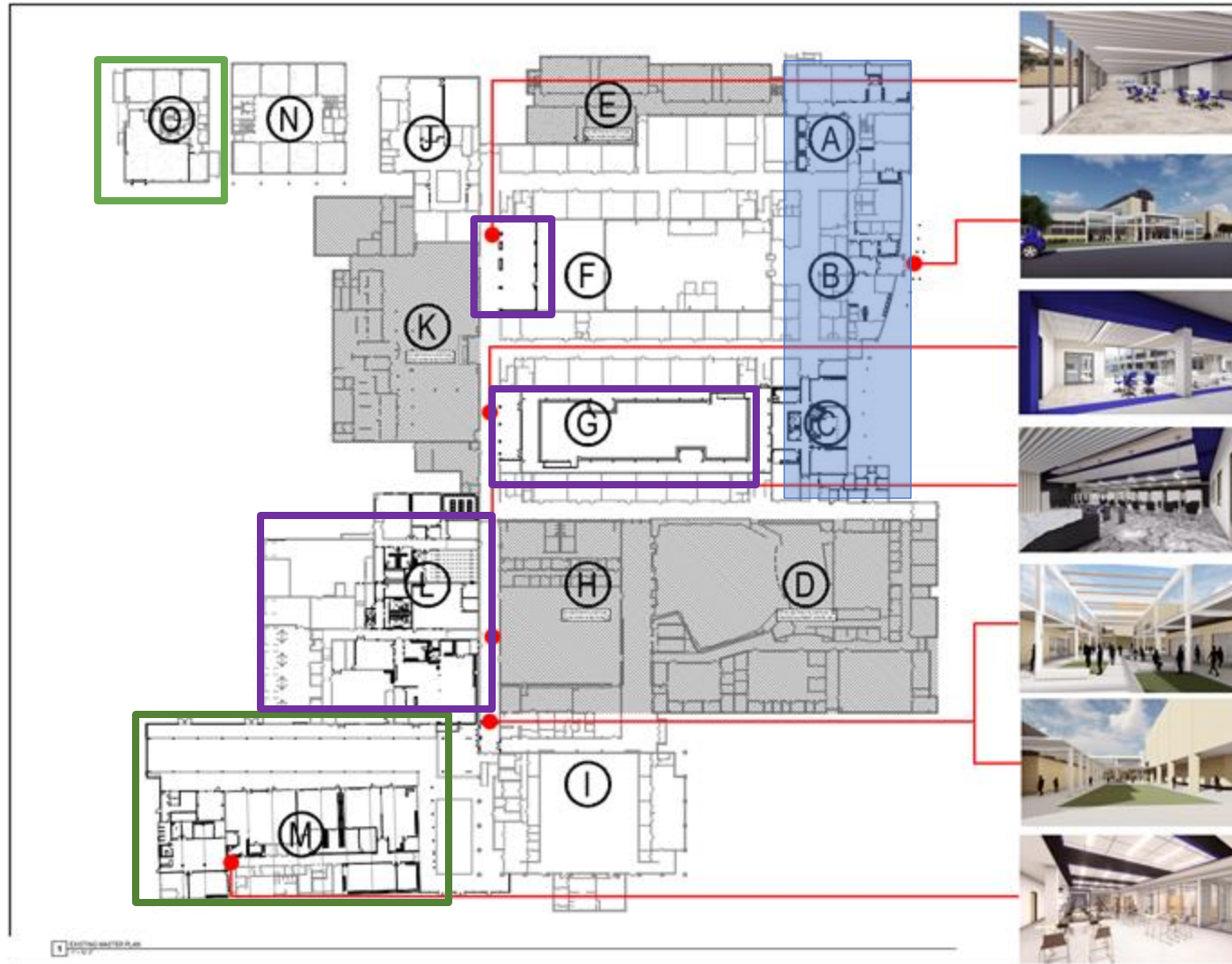
R.L Turner High School



Library Courtyard



R.L Turner High School



Admin, Bio Med, and Special Ed Areas are completed

Courtyards, Cosmetology, and auto shop are active construction

Vet Med, Welding, Floral, Pride Lands, and entry Canopy Planned for Summer 2021

2018 BOND UPDATE

- New Sheffield Elementary

New Sheffield

Project: New Construction

At: Sheffield Elementary School

Architect: LPA

Contractor: Jackson Construction

GMP: \$26.7 MM

Progress: Construction 5%

Completion Date: July 2022



New Sheffield - New building

Design May 2019 - July 2020

Construction July 2020 - July 2022

New Sheffield



2018 BOND UPDATE

- Perry Middle School

Perry Middle School



2018 BOND UPDATE

- Newman Smith High School

Smith High School

Project: 2020 - Maint. & CTE Reno

At: Newman Smith High School

Architect: LPA

Contractor: TBD

GMP: Construction est: \$25.5 MM

Progress: Schematic Design

Completion Date: August 2022

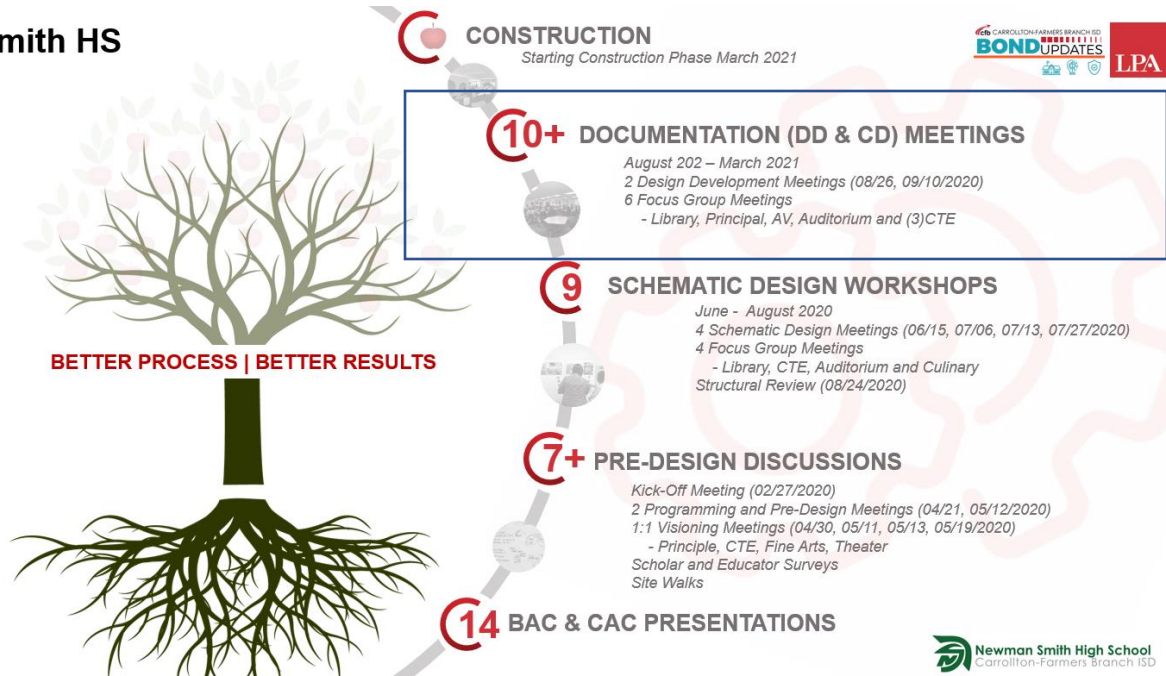


- *Spirit and Community*
- *Movement & Campus Organization*
- *Innovative & Collaborative CTE Spaces*
- *Technology & Digital Learning*
- *Human Connections with Restorative Spaces*

An environment grounded in inspiration, wellness, human connection and community.

Smith High School

Smith HS



APPLY GIVE VISIT

Search

COUGARWEB LOGIN >

ACADEMICS

ADMISSIONS & AID

RESOURCES

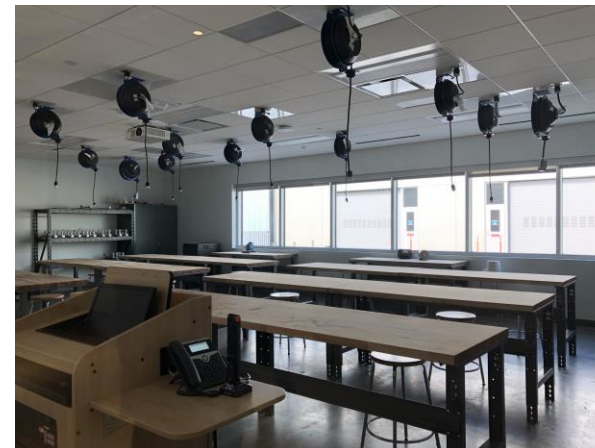
ABOUT

COMMUNITY & BUSINESS

College employees will work remotely Dec. 14-18. Campuses will be closed during this week and virtual services are avail

[View College COVID-19 Information](#)

HVAC (Heating, Ventilation, Air Conditioning)



2018 BOND UPDATE

- Pilot Furniture Tour

Pilot Furniture Tour

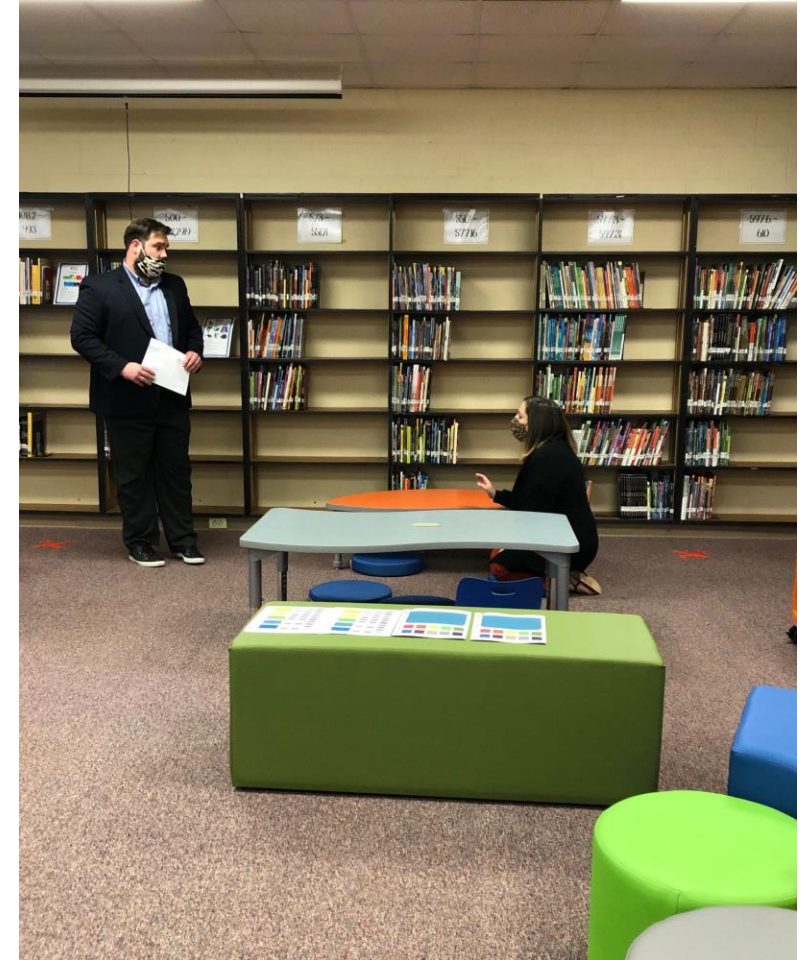


Vivian Field Middle School
Carrollton-Farmers Branch ISD



DeWitt Perry Middle School
Carrollton-Farmers Branch ISD

Pilot Furniture Tour



Pilot Furniture Tour





Questions?