



WEST
BLOOMFIELD
SCHOOL DISTRICT

School Efficiency Study Stakeholder Involvement

December 1, 2020

The Board of Education continues to be **forward-thinking** with a comprehensive review of overall operational efficiency.



Current School Efficiency Study

- Examine utilization of school buildings in order to optimize funding for overall programs
- Evaluate all buildings using a “level playing field” analysis based on efficiency
- Focus on elementary level and central facilities since the District has one middle school and one high school



Western Demographics

2012

Original SEAF study

Spring
2020

Updated enrollment analysis

Fall
2020

Current School Efficiency Study



SEAF Recommendations (2012)

- Close ACS in June of 2013
- Close Ealy Elementary in fall of 2013
- Convert Doherty to grades K-2 in fall of 2013
- Convert Sheiko to grades 3-5 in fall of 2013
- Consider closure of Roosevelt in a 2-5 year time frame
- Consider converting middle schools to grades 5-8
- Relocate special education and preschool programs



Enrollment Analysis (May 2020)

- Enrollment in the northern tier continues to decline
- Continued enrollment decline may justify a consolidation at the elementary level



Process

1

Data Collection

2

Task Force

3

Stakeholder Involvement

4

Decision Support



1

Data Collection

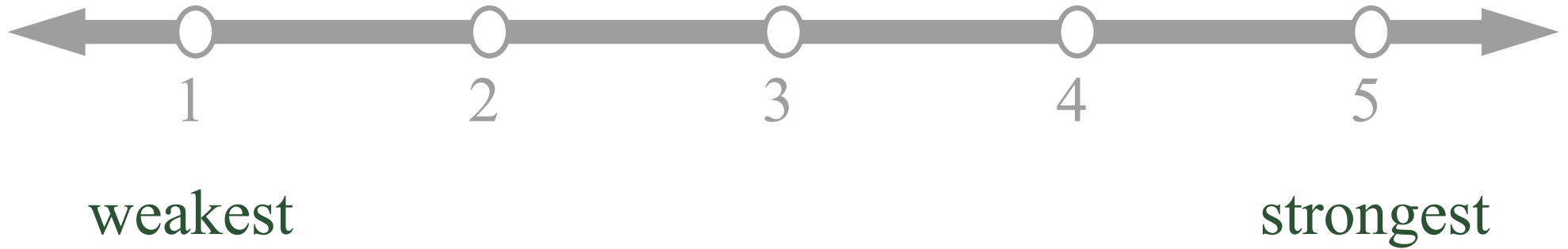


Facility efficiency metrics

- Building utilization
- Facility condition
- Future capital needs
- Facility age
- Pedestrian viability
- Operating cost
- Prior capital investment
- Compliance with current ed specs



Scoring



Building Scores

| | Doherty | Gretchko | Roosevelt | Scotch | Sheiko |
|----------------------------------|------------|-------------|-------------|-------------|-------------|
| Building utilization | 4.3 | 4.1 | 5 | 3.1 | 2.9 |
| Facility condition | 4.4 | 4.4 | 2.4 | 3.9 | 4.1 |
| Future capital needs | 3 | 5 | 1 | 2 | 4 |
| Facility age | 3.6 | 5 | 1 | 4.7 | 2.9 |
| Pedestrian viability | 2 | 2.8 | 4 | 3.1 | 2.4 |
| Operating cost | 5 | 4.4 | 4.6 | 3.5 | 3 |
| Prior capital investment | 4.7 | 5 | 2.7 | 2.1 | 4.2 |
| Compliance with current ed specs | 5 | 4 | 1 | 4 | 5 |
| Total | 32 | 34.7 | 21.7 | 26.4 | 28.5 |
| Grade | 80% | 87% | 54% | 66% | 71% |



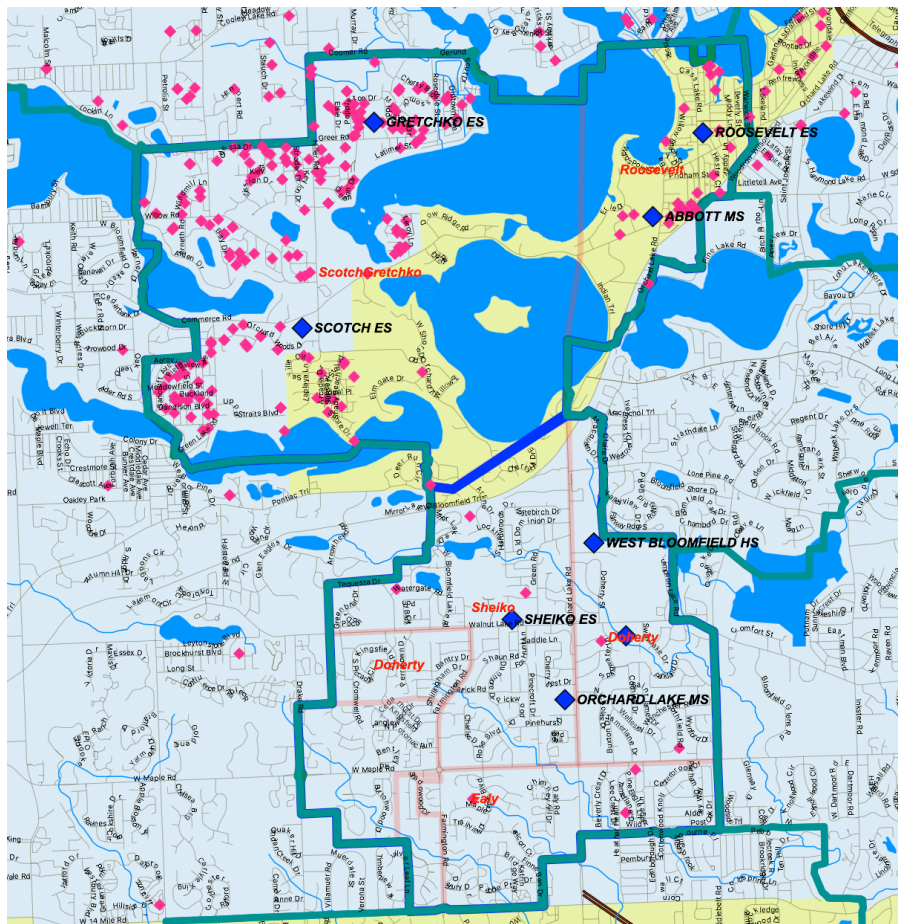
1. Percentage Utilization

| School | Grade Range | GenEd In-person | SPED | Lakers Online | SY 20-21 Enrollment | WD Capacity | Principals Capacity Estimate | WD Seats Available* | Prin Estimate Seats Available* | WD % Utilization | Principal % Utilization |
|------------------------------|-------------|-----------------|-----------|---------------|---------------------|-------------|------------------------------|---------------------|--------------------------------|------------------|-------------------------|
| Doherty | PK-2 | 318 | 15 | 224 | 557 | 603 | 715 | 46 | 158 | 92.4% | 77.9% |
| Gretchko | PK-2 | 301 | 7 | 122 | 430 | 518 | 525 | 88 | 95 | 83.0% | 81.9% |
| Roosevelt | PK-5 | 279 | 4 | 191 | 474 | 428 | 475 | -46 | 1 | 110.7% | 99.8% |
| Scotch | G3-5 | 210 | 10 | 58 | 278 | 594 | 706 | 316 | 428 | 46.8% | 39.4% |
| Sheiko | G3-5 | 225 | 13 | 79 | 317 | 585 | 600 | 268 | 283 | 54.2% | 52.8% |
| Total | | 1332 | 50 | 674 | 2056 | 2728 | 3021 | 672 | 965 | | |
| <i>Aggregate Utilization</i> | | | | | | 75.4% | 68.1% | | | | |

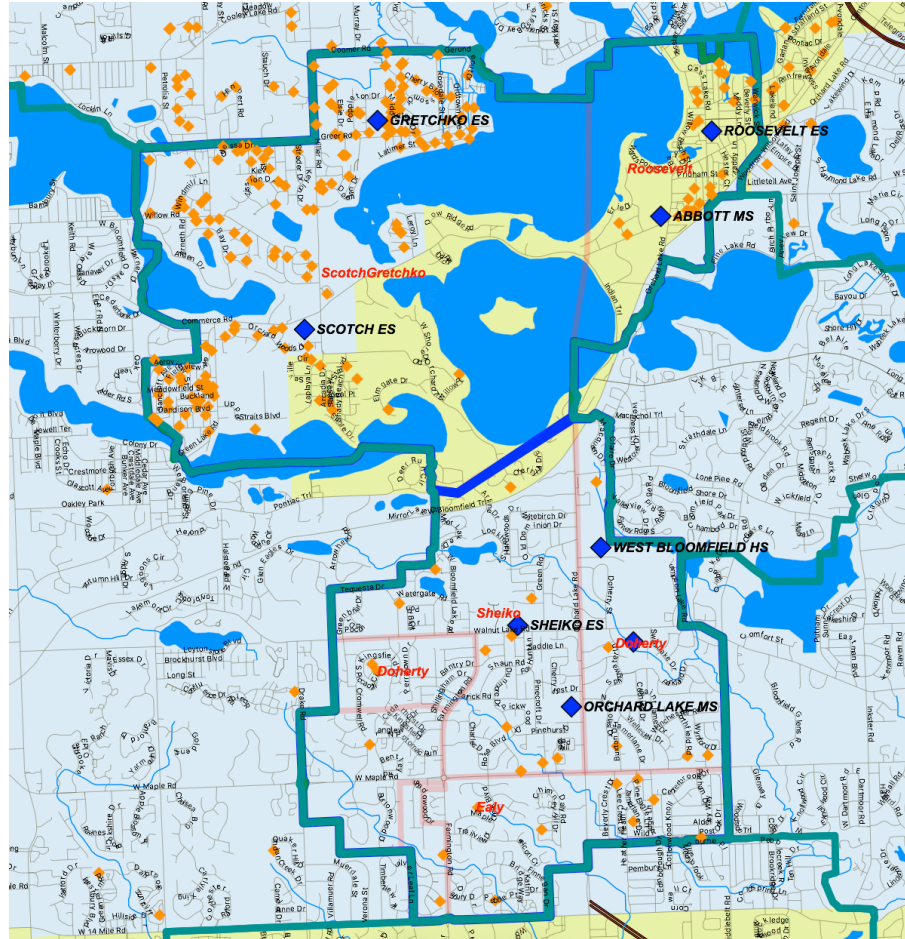
*Assumes 100% Return to In-person

| School | SY 20-21 Enrollment | WD Capacity | Principals Capacity Estimate | 2019 In-District Percentage | Adjusted SY 20-21 | In-District Utilization - WD | In-District Utilization - Principals | WD In-District Seats Available* | Prin Estimate In-District Seats Available* |
|--------------|---------------------|-------------|------------------------------|-----------------------------|-------------------|------------------------------|--------------------------------------|---------------------------------|--|
| Doherty | 557 | 603 | 715 | 72.3% | 403 | 66.8% | 56.3% | 200 | 312 |
| Gretchko | 430 | 518 | 525 | 56.8% | 244 | 47.2% | 46.5% | 274 | 281 |
| Roosevelt | 474 | 428 | 475 | 45.8% | 217 | 50.7% | 45.7% | 211 | 258 |
| Scotch | 278 | 594 | 706 | 57.7% | 160 | 27.0% | 22.7% | 434 | 546 |
| Sheiko | 317 | 585 | 600 | 80.3% | 255 | 43.5% | 42.4% | 330 | 345 |
| Total | 2056 | 2728 | 3021 | | 1279 | 46.9% | 42.3% | 1449 | 1742 |

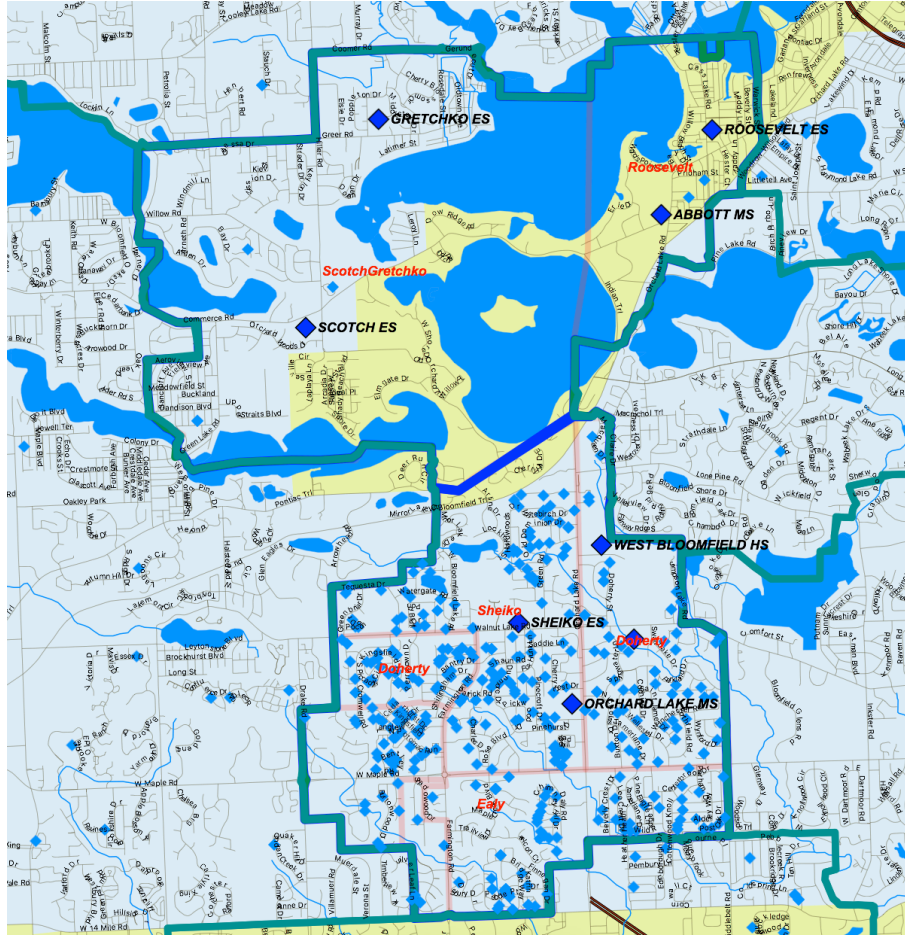




Gretchko PK-5 Elementary Student Distribution

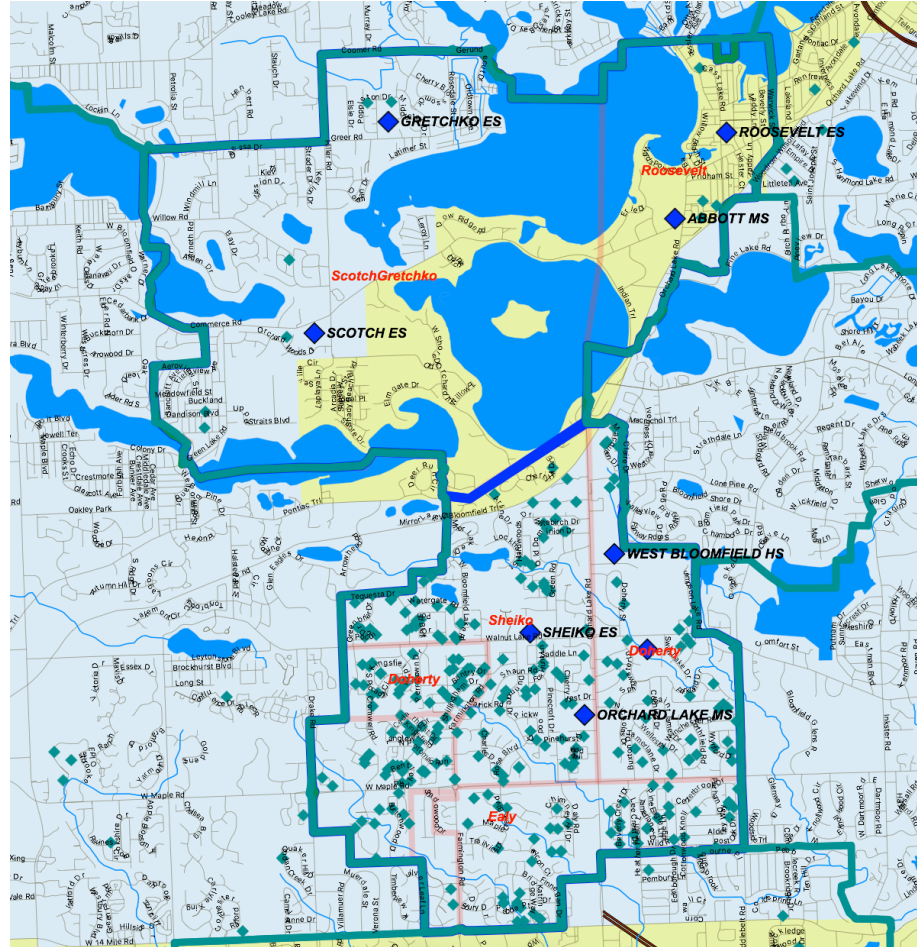


Scotch Grade 3-5 Elementary Student Distribution

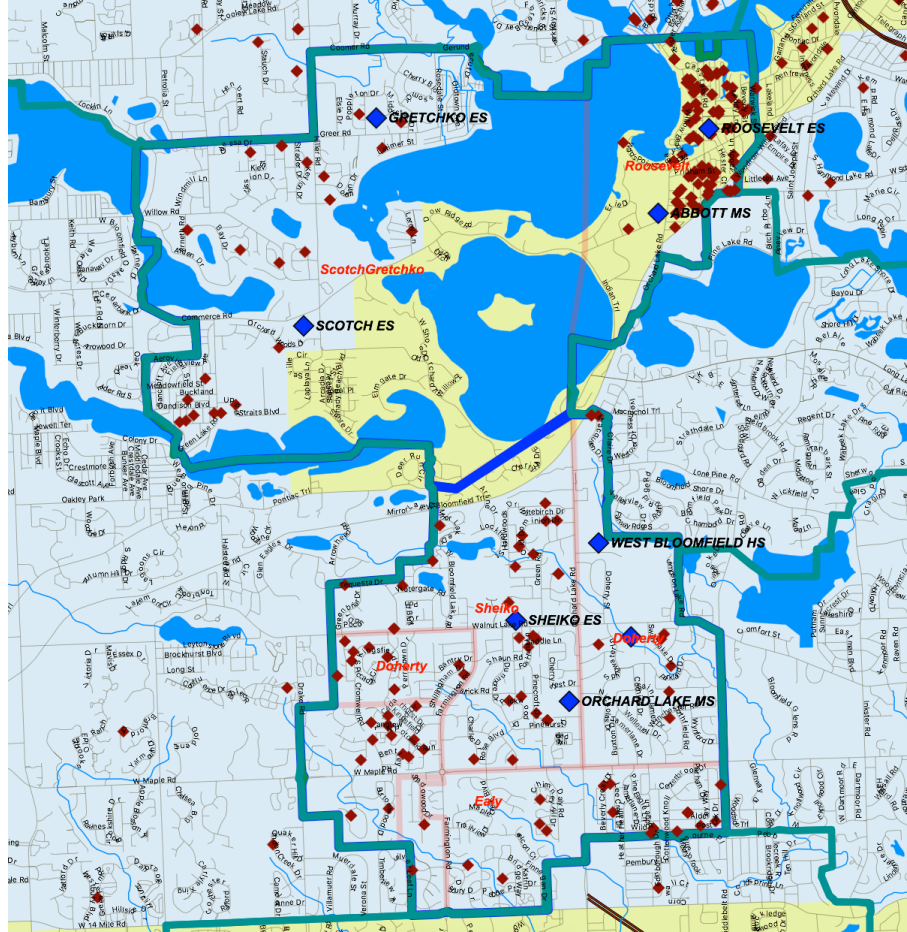


Doherty PK-2 Elementary Student Distribution

Sheiko Grade 3-5 Elementary Student Distribution



Roosevelt PK-5 Elementary Student Distribution



2. Facility Condition

- TMP Architecture Facility Ratings
- Partial Building Sample
- School building systems are ranked on a scale of one to five given approximate, but objective measures provided by district operational staff given the time and resources available.



Doherty Elementary School

- *Originally built in 1966 with a recent addition in 2001/2002, Doherty School is arranged in a series of classroom pods with associated collaboration/central areas.*
- *The school also features a central media center that has direct access from all general classroom spaces*



Doherty Elementary School



Gretchko Elementary School

- *Designed for students in grades K-1, this school features large classrooms areas specifically designed for the young learner with direct access to outdoor learning niches.*
- *Located in an established residential community, the design of Gretchko utilizes pitched roofs and siding that is compatible with its context.*



Gretchko Elementary School

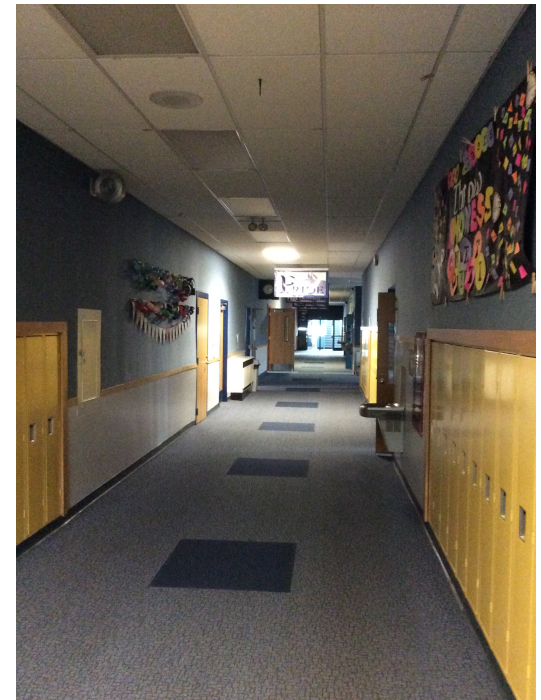


Roosevelt Elementary School

- *Originally built as a high school in 1920, Roosevelt includes numerous additions in 1994-95 and 2002-2002.*
- *The three story school, includes generous window areas into major instructional spaces...however, many of the classrooms are undersized that limits the flexibility of these learning environments.*



Roosevelt Elementary School



Scotch Elementary School

- *Designed to house grades 2-5, Scotch includes appropriately sized instructional spaces to allow flexible learning to occur.*
- *The school was built in 1988 with a major classroom addition completed in 2004.*
- *Common areas are also appropriately sized and include easy access from all class areas.*



Scotch Elementary School

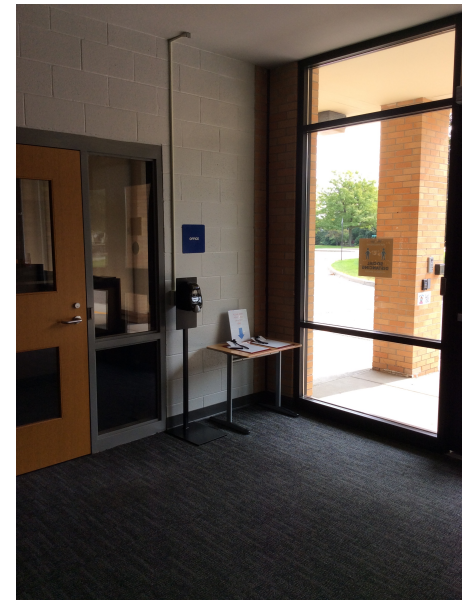


Sheiko Elementary School

- *Originally built in 1954, Sheiko School includes numerous additions for classroom spaces and Media Center.*
- *The gymnasium/multi-purpose space is located adjacent to the main entry which facilitate zoned after hours events.*



Sheiko Elementary School



3. Future Capital Investment Needs

- Continuation of new middle school \$40,349,000 (estimate of remaining funds required to complete) \$1,000,000
- Sheiko parking lot reconfiguration \$1,900,000
- Doherty roof replacement (partial) \$734,000
- Scotch roof replacement (partial) \$103,000
- WBHS main entrance door replacement \$200,000
- Roosevelt HVAC upgrades \$1,000,000
- Roosevelt roof replacement (partial) \$425,000
- Abbott HVAC upgrades \$1,000,000
- WBHS bleacher replacement \$1,000,000
- WBHS roof replacement \$1,100,000
- Transportation facility roof and parking lot \$370,000
- Total: \$48,181,000



4. Elementary School Facility Age

- Doherty Elementary - 1968
- Gretchko Elementary - 1995
- Roosevelt Elementary - 1920
- Scotch Elementary - 1989
- Sheiko Elementary - 1956



5. Pedestrian Potential

- Doherty: 30 students
- Gretchko: 18 students
- Roosevelt: 84 students
- Scotch: 5 students
- Sheiko: 41 students



6. Operating Cost Per Student

| Building | Gross Building Area (sq. ft.) | Number of Stories | Site Acreage | Three-Year Average Utility Cost (FY18,19, 20) | Fall 2019 FTE | Utility Cost per Student | Utility Cost per Square Foot | Operational Costs | Operational Cost per Student | Score |
|----------------------|----------------------------------|-------------------|--------------|---|---------------|-----------------------------|---------------------------------|-------------------|---------------------------------|-------|
| Gretchko Elementary | 58,415 | 1 | 15 | \$70,285 | 421 | \$167 | \$1.20 | \$624,711 | \$1,484 | 4.4 |
| Roosevelt Elementary | 72,369 | 3 | 5.71 | \$76,046 | 485 | \$157 | \$1.05 | \$686,791 | \$1,416 | 4.6 |
| Sheiko Elementary | 67,875 | 1 | 16.65 | \$68,618 | 337 | \$204 | \$1.01 | \$632,209 | \$1,876 | 3.0 |
| Doherty Elementary | 67,929 | 1 | 13.82 | \$55,888 | 520 | \$107 | \$0.82 | \$680,055 | \$1,308 | 5.0 |
| Scotch Elementary | 66,346 | 1 | 17.5 | \$49,562 | 380 | \$130 | \$0.75 | \$663,228 | \$1,745 | 3.5 |



7. Prior Investment

| Building | 2020 | 2019 | 2018 | 2017 | 2016 | 2015 | 2014 | 2013 | 2012 | 2006 | 2004 | 2003 | 2001 | 2000 | 1996 | 1995 | 1994 | 1989 | Totals: | Elem Avg | Score | Building |
|-----------|-------------|-------------|-----------|-----------|-----------|-----------|------|-----------|-----------|-------------|-------------|-------------|-------------|-----------|-------------|-------------|-----------|-------------|--------------|----------|-------|-----------|
| Doherty | \$3,669,115 | | | | \$298,376 | | | \$651,154 | \$947,045 | | \$2,520,275 | | | \$673,939 | \$542,003 | \$1,774,069 | | \$1,670,145 | \$12,746,121 | | 4.7 | Doherty |
| Gretchko | \$4,773,490 | | | \$703,322 | | | | \$122,309 | \$319,112 | | \$2,452,289 | | | \$548,376 | \$1,033,590 | \$3,374,031 | | | \$13,326,519 | | 5.0 | Gretchko |
| Roosevelt | \$39,740 | | \$152,350 | | | | | \$742,930 | \$743,111 | \$3,447,353 | | | \$110,447 | | \$1,371,715 | \$1,710,675 | | | \$8,318,321 | | 2.7 | Roosevelt |
| Scotch | \$3,033,981 | | | \$173,219 | | \$605,685 | | \$767,653 | | | | \$2,416,648 | | | | | | | \$6,997,186 | | 2.1 | Scotch |
| Sheiko | \$407,979 | \$3,983,337 | | \$92,921 | | | | \$415,014 | \$802,252 | | | | \$3,049,874 | | \$2,750,925 | | | | \$11,482,302 | | 4.2 | Sheiko |
| ACS | | | | | | | | | | \$506,552 | | | | | \$526,144 | | \$326,153 | | \$1,358,849 | | | ACS |



8. Compliance with Modern Educational Specifications

| School | Doherty | Gretchko | Roosevelt | Scotch | Sheiko | PreS-Admin | Transition |
|--------|---------|----------|-----------|--------|--------|------------|------------|
| Rating | 5 | 4 | 1 | 4 | 5 | 3 | 4 |

- Doherty and Sheiko have the most modern buildings, best able to deliver modern programs
- Roosevelt is the most historic and least similar to buildings being built today, it is still a large building



Elementary School Ratings – All Rubrics

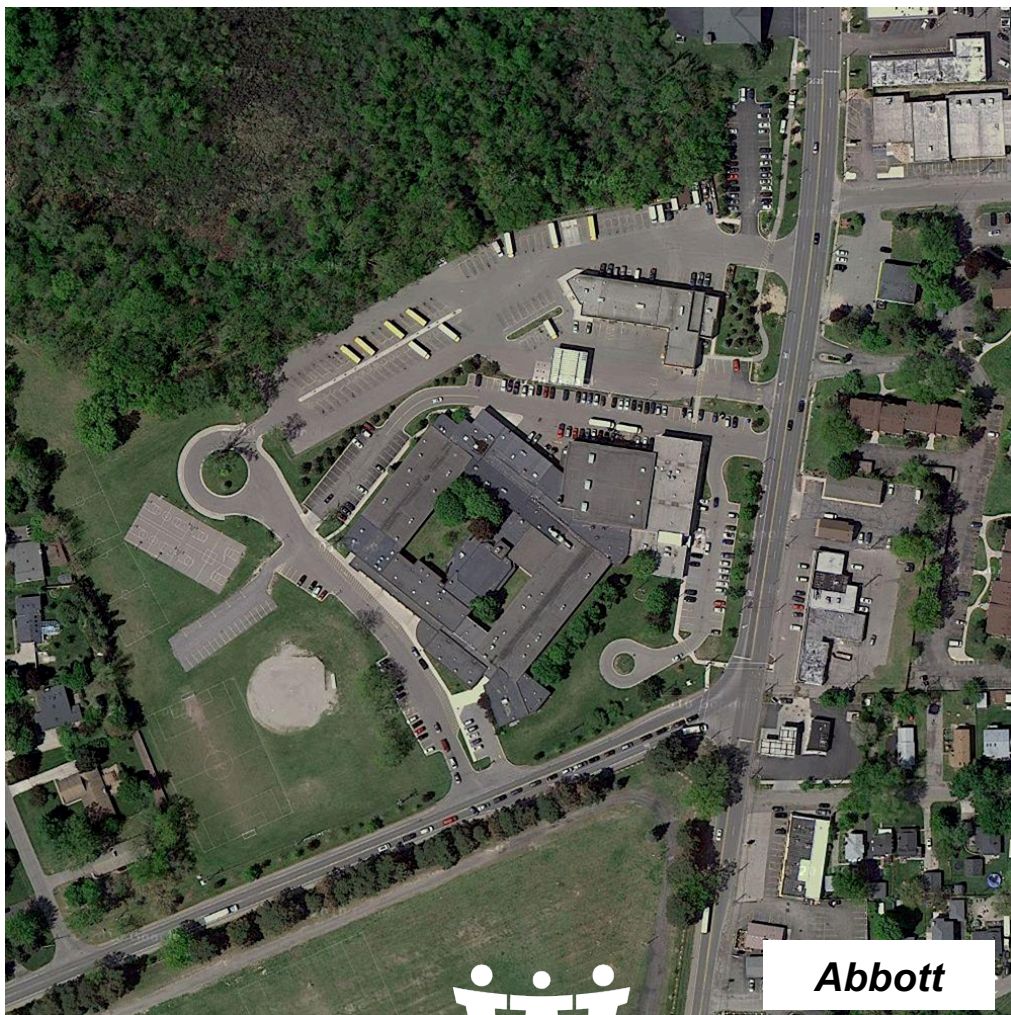
Scoring Summary of WBSD Elementary Ratings - 10/22/20 - DRAFT

| Index | Gretchko | Scotch | Doherty | Roosevelt | Sheiko |
|---|-------------|-------------|------------|-------------|-------------|
| Percentage utilization now and in the future | 4.1 | 3.1 | 4.3 | 5 | 2.9 |
| Facility condition | 4.4 | 3.9 | 4.4 | 2.4 | 4.1 |
| Future capital investment needs | 5 | 2 | 3 | 1 | 4 |
| Facility age | 5 | 4.7 | 3.6 | 1 | 2.9 |
| Pedestrian viability | 2.8 | 3.1 | 2 | 4 | 2.4 |
| Operating cost per student | 4.4 | 3.5 | 5 | 4.6 | 3 |
| Prior capital investment | 5 | 2.1 | 4.7 | 2.7 | 4.2 |
| Compliance with current educational specifications - Castellana B16 | 4 | 4 | 5 | 1 | 5 |
| Total | 34.7 | 26.4 | 32 | 21.7 | 28.5 |
| Grade | 87% | 66% | 80% | 54% | 71% |



Abbott Central Campus Concept





Abbott Aerial Photograph



Task Force



Task Force

- Reviewed building efficiency data
- Discussed potential school closure options
- Examined preschool locations
- Formulated stakeholder survey



3

Stakeholder Involvement



Stakeholder Involvement




**Staff
Focus Group**
November 30
6:30 p.m.



**Parent
Focus Groups**
December 1
December 3
6:30 p.m.



Survey

-  Consolidation of central services
-  Preschool locations
-  Elementary closure



Elementary Closure

Scenario 1

Roosevelt closes
Gretchko PK-2
Scotch PK, 3-5
Doherty PK-2
Sheiko PK, 3-5

Scenario 2

Scotch closes
Gretchko PK-2
Roosevelt PK, 3-5
Doherty PK-2
Sheiko PK, 3-5



4

Decision Support



The Board of Education will consider the Task
Force's recommendation at its
Study Session on December 7.





Questions?



Take the Survey

<https://www.surveymonkey.com/r/2020-WBSD>

