




South Texas ISD

# Health Professions

GRADES 9-12 | MERCEDES

## Desktop Browsers


### Chrome

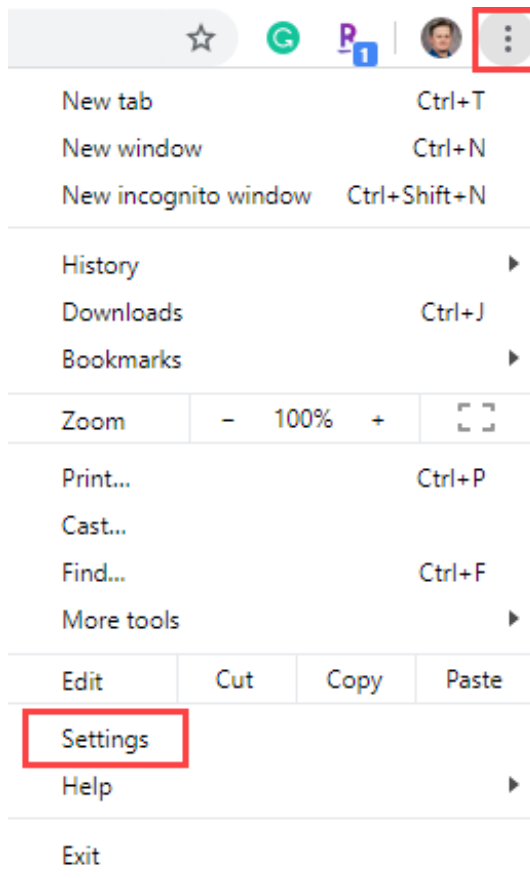
Google Chrome prevents pop-ups from automatically appearing and cluttering your screen. Whenever the browser blocks pop-ups for a site, the  icon appears in the address bar. Click the icon to see the pop-ups that have been blocked or to manage pop-up settings for the site.

#### To See pop-ups for a specific site

1. If pop-ups have been blocked, you'll see the icon in the address bar. Click the icon to see a list of the blocked pop-ups.
2. Click the link for the pop-up window that you'd like to see.
3. To always see pop-ups for the site, select **Always show pop-ups from [site]**. The site will be added to the exceptions list, which you can manage in the **Content Settings** dialog.

#### To Allow pop-ups

1. Click the settings icon (  ) on the browser toolbar and select **Settings**.



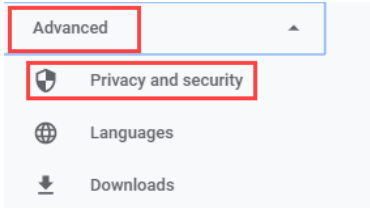


South Texas ISD

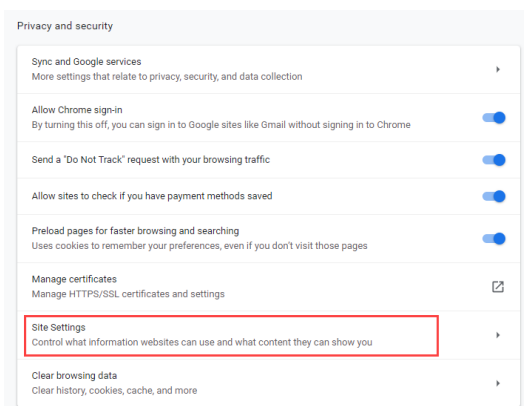
# Health Professions

GRADES 9-12 | MERCEDES

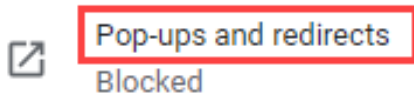
2. On the left, select **Advanced**, then click **Privacy and security**.



3. Under Privacy and security, click **Site Settings**.



4. Scroll down and select **Pop-ups and redirects**.



5. Change the slider to the **Allowed** state.

← Pop-ups and redirects

🔍 Search

Allowed





South Texas ISD

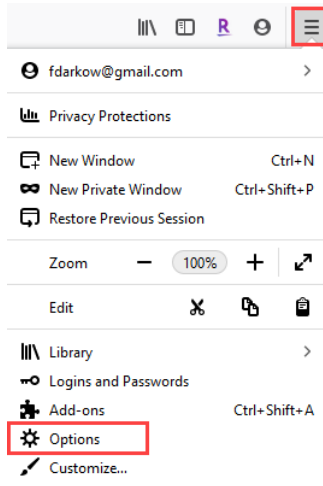
# Health Professions

GRADES 9-12 | MERCEDES

## Firefox

To access the pop-up blocker settings:

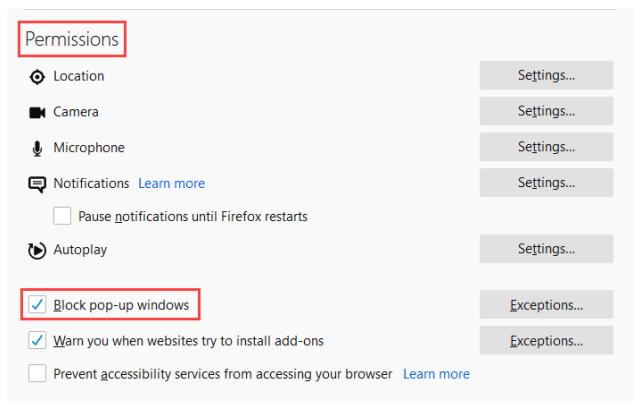
1. Click the settings icon (  ) on the top right bar and then click **Options**.



2. On the left, select **Privacy & Security**.



3. Scroll down to the **Permissions** area and uncheck **Block pop-up windows**.






South Texas ISD

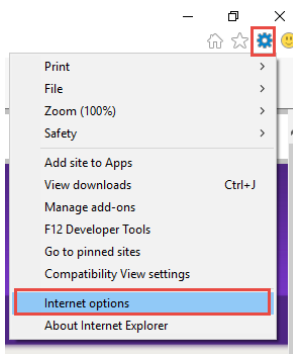
# Health Professions

GRADES 9-12 | MERCEDES

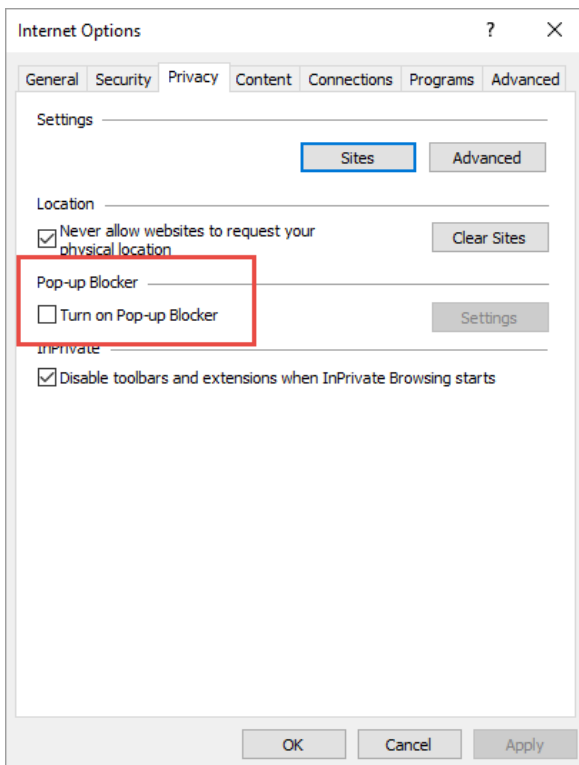
## Internet Explorer

To access the pop-up blocker settings:

1. Select the Internet Explorer gear icon  in the upper right corner of the screen.
2. Select **Internet Options**.



3. Select the **Privacy** tab, then deselect the **Pop-up Blocker**.



4. Select **Apply** and then **OK** to exit the **Internet Explorer** options.




South Texas ISD

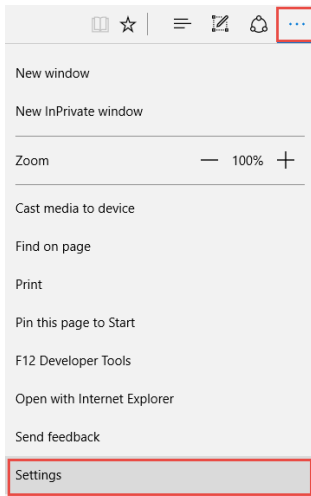
# Health Professions

GRADES 9-12 | MERCEDES

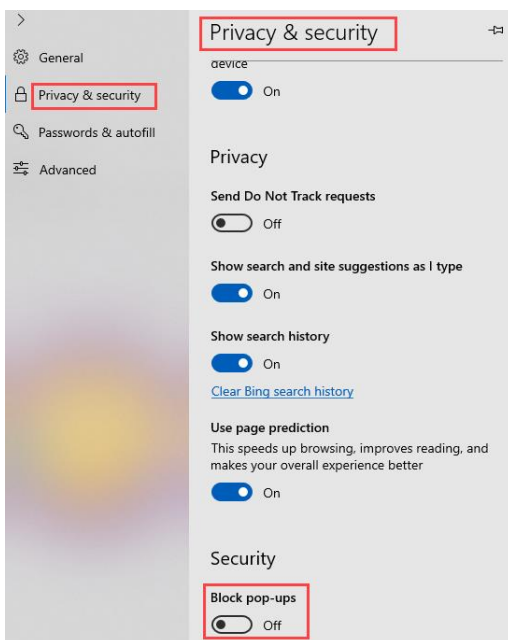
## Microsoft Edge

To access the pop-up blocker settings:

1. Click the settings icon  on the top right bar and then click **Settings**.



2. Select **Privacy & Security** on the left-hand menu. Scroll down to **Security** and change **Block pop-ups** to **Off**.





South Texas ISD

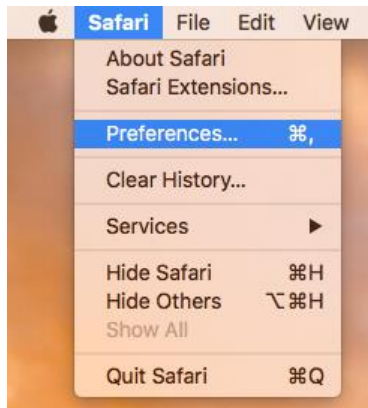
# Health Professions

GRADES 9-12 | MERCEDES

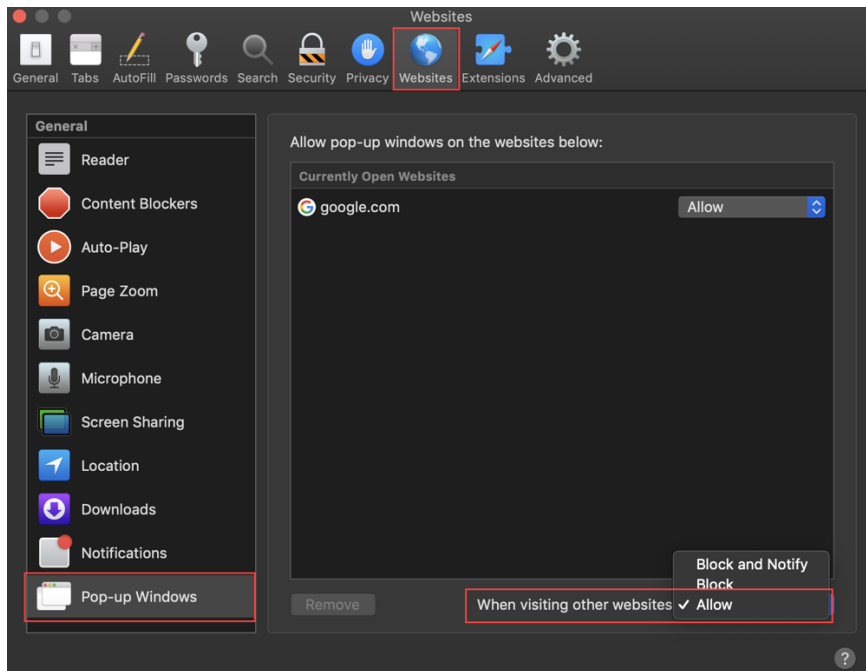
## Safari

To access the pop-up blocker settings:

1. While your browser is open, just click on the **Safari** menu at the top left of your screen.
2. In the drop-down menu, select **Preferences**.



3. Select the **Websites** tab at the top of the utility. From the left menu, select **Pop-up Windows**. In the lower right, next to **When visiting other websites**, select **Allow**.



4. When finished, click the **red button** in the upper left corner to close **Safari Preferences**.



South Texas ISD

# Health Professions


GRADES 9-12 | MERCEDES

## Mobile devices

### Chrome (Android)

**NOTE:** These are general instructions, actual steps may vary or this function may not be offered depending on the version of Chrome delivered with your device.

#### To Allow pop-ups

1. Open Chrome
2. Click the settings icon  on the browser toolbar.
3. Select **Settings**.
4. Click **Advanced** or **Site Settings**
5. Uncheck **Block Pop-ups** check box or slide the **Block Pop-ups** button to the off position.



South Texas ISD

# Health Professions

GRADES 9-12 | MERCEDES

## Safari (iOS)

To access the pop-up blocker settings:

1. Click **Settings**.
2. Tap **Safari**.
3. Under the **General** section, click the toggle next to **Block Pop-ups** to enable or disable the pop-up blocker. A green toggle indicates an enabled pop-up blocker.