



Fotos: Sebastian Stiphout

## Contact us!

Contact our helpful and caring Admissions Team, check out our Open Days or make an appointment for an individual school tour at our BIS City Campus!

**Bavarian International School (BIS)**  
City Campus  
Leopoldstraße 208  
80804 Munich-Schwabing, Germany

**Petra Douglas**  
Phone: +49 89 / 89655 - 522  
p.douglas@bis-school.com

Principal: **Owen Murphy**  
Vice Principal and PYP Curriculum  
Coordinator: **Nicola Moloney**

[www.bis-school.com](http://www.bis-school.com)



## Frequently Asked Questions

### What if my child isn't fluent in English?

It is not a prerequisite for your child to speak English. In the Early Childhood Centre (Kindergarten), children learn through play. From Grades 1-5, we offer language development classes to English language learners.

### How is German taught?

At BIS we support home language development, including German. German is specifically taught five periods a week, and through meaningful team teaching in the classroom context.

### How will my child get to school?

Many people walk, ride a bike or use public transport, but we also offer a shuttle bus system. Once the students move to Haimhausen, there are buses available from Münchner Freiheit, City Campus and many local neighbourhoods.

### Do you serve school lunches at BIS City Campus?

We have our own kitchen and cafeteria where Primary School students can have a warm, tasty and healthy lunch every day. The Kindergarten children eat together in their rooms.

### How are parents supported at BIS?

The community bond at BIS City Campus is very close, supportive and inspiring. The dedicated Parent Community Council (PCC) supports the idea that everyone has a home away from home here.

## BIS City Campus Facts & Figures

More than

**300 children** from **40 nations**

attend the BIS City Campus. **1,250 students** from **70 countries** are attending BIS at both campuses.



More than

**50 professionals** from **30 different nations**

take care of the children.

### City Campus school day hours:

**8:20 – 15:15**

(Friday 13:35)

**After School Activities**

**15:30 – 16:30**

(Friday 13:50 – 14:50)

**After School Care**

until **18:00**

(17:00 on Friday)



**Maximum class sizes:**

**18** in the Early Childhood Centre,  
**24** in the Primary School.

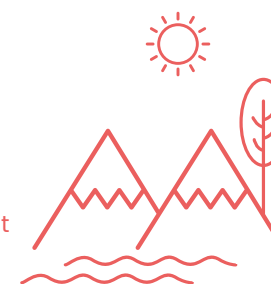
**The magic of BIS in a 4 minute video:**



BIS City Campus offers

### holiday camps

in several weeks of the **Easter and Summer holidays** as well as on Parent Conference and Staff Professional Development days, for students aged 5-11.



**BIS City Campus – the school of the future**





# BIS City Campus

BIS is a non-profit, all-day IB World School from Kindergarten to Grade 12. At the two campuses in Munich-Schwabing and Haimhausen, approx. 1,250 students from 70 nations learn under the motto "Believe. Inspire. Succeed."

More than 300 students attend the centrally located BIS City Campus in Munich-Schwabing with the Early Childhood Centre (for kindergarten and pre-school aged students) and the Primary School from Grades 1 to 5. Highly skilled, motivated teachers are crucial for providing a personalised, holistic education and teaching of values and future skills. BIS is proud to be one of only 25 Positive Discipline Lab Schools in the world!

With its modern curriculum, state-of-the-art equipment and the meaningful integration of educational technology, BIS is a school of the future, already today. Small classes, a family-like community, and the warm atmosphere emphasise the unique character of BIS City Campus as a truly international school in the heart of Munich.



## Early Childhood (Kindergarten)

The Early Childhood Centre from the age of three supports Kindergarten and pre-school aged students. The small classes with a maximum of 18 students are taught by one teacher and one learning assistant.

Following the Primary Years Programme (PYP) of the International Baccalaureate (IB), we focus on play-based learning and put great emphasis on the development of interpersonal skills and social-emotional aspects. The holistic approach embraces cognitive, physical, social and emotional aspects as well as communication and language capabilities. Learning through play allows our children to have agency: voice, choice and ownership, whilst developing knowledge and understanding.

The Early Childhood area is lovingly, comfortably and safely equipped to the highest standards and complemented with their own sports hall and the playground.



## Primary School

In our Primary School students continue to have voice, choice and ownership, taking responsibility for their own learning. Our curriculum ensures the continual provision of teacher-initiated and student-led inquiries to develop knowledge and conceptual understandings. Students are supported to become self-motivated learners who reflect, monitor and adjust their learning.

In Grades 1 – 5, students establish personal values, gain an understanding of the world around them and develop friendships in our international community. In small classes up to 24 children, our teachers design transdisciplinary learning experiences incorporating languages, mathematics, science, social studies, art, music and educational technology along with physical, social and personal education.

With the Primary Years Programme (PYP), we lay the foundations for individual pathways of development and lifelong learning.



## After School Programmes (ASA)

We offer After School Care (ASC) as well as a variety of After School Activities (ASA) to provide extracurricular opportunities and extended social opportunities for our students. For BIS students, education is everywhere, not only in the classroom.

We offer a variety of After School Activities (15:30 – 16:30 and Friday 13:50 – 14:50), such as Art, Acting, Basketball, Chess, Football, iMovie, Karate, Music, Pickleball, Soccer, Skating, Swimming, Yoga etc.

After School Care is available until 18:00 (17:00 on Fridays) and starts with a snack, homework or quiet reading time and then activities. Parents can book After School Care flexibly for 2 to 5 days a week.

