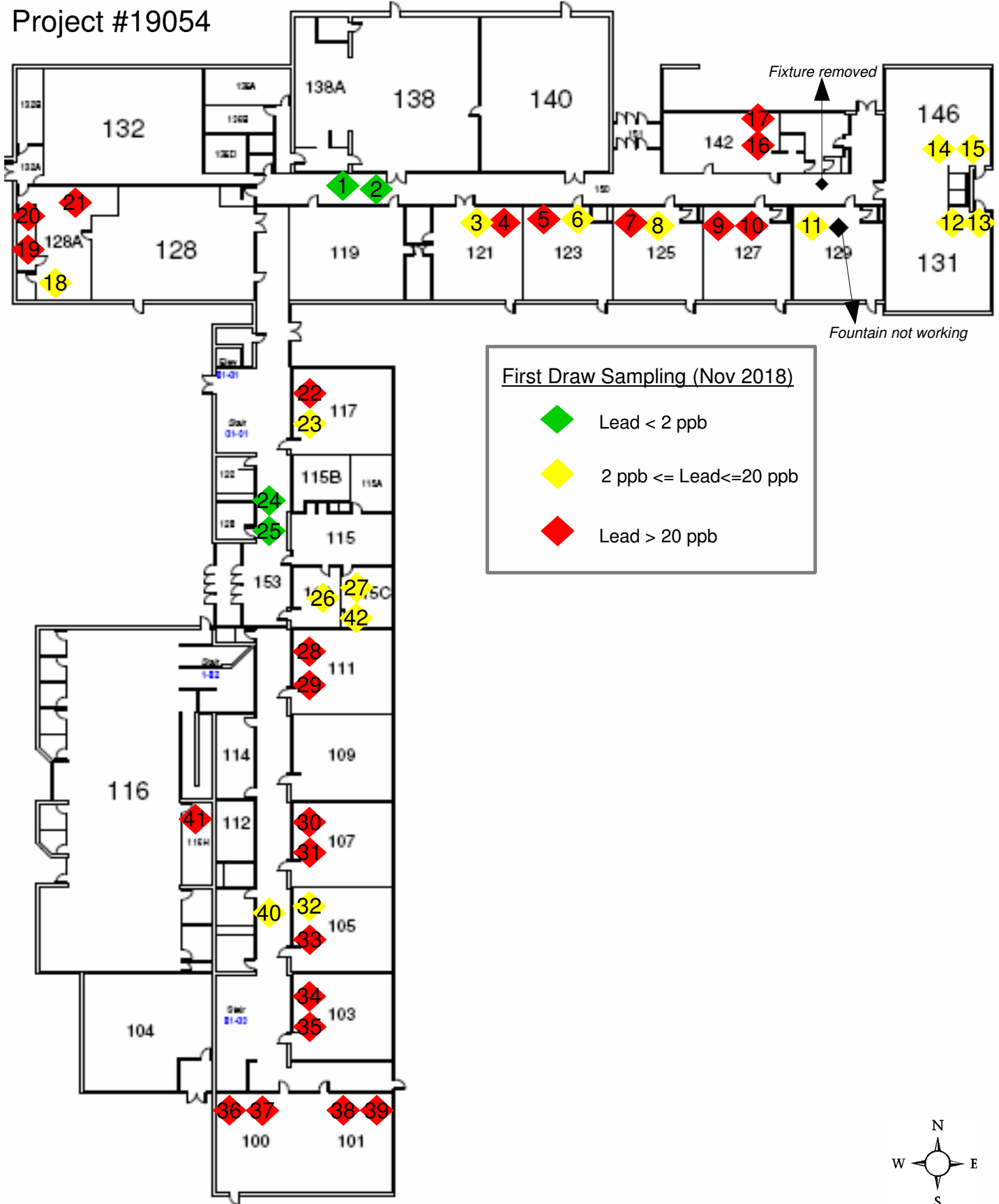


School Name: **Oak-Park Elementary (OP)**Date: **11/2/2018**

| Floor | Room Number | Location | Sample ID | Type DF = Drinking Fountain S = Sink WC = Water Cooler BF = Bottle Filler K=Kettle | Lead Result (ppb) |
|--------|-------------|--------------------------|-----------|---|-------------------|
| First | - | Hallway | 1 | WC | ND |
| First | - | Hallway | 2 | BF | ND |
| First | 121 | Classroom | 3 | S | 16.6 |
| First | 121 | Classroom | 4 | DF | 20.4 |
| First | 123 | Classroom | 5 | S | 21 |
| First | 123 | Classroom | 6 | DF | 12.1 |
| First | 125 | Classroom | 7 | S | 20.6 |
| First | 125 | Classroom | 8 | DF | 16.9 |
| First | 127 | Classroom | 9 | S | 31.4 |
| First | 127 | Classroom | 10 | DF | 29.3 |
| First | 129 | Classroom | 11 | S | 11.6 |
| First | 131 | Classroom | 12 | S | 13.2 |
| First | 131 | Classroom | 13 | DF | 18.2 |
| First | 146 | Classroom | 14 | S | 13 |
| First | 146 | Classroom | 15 | DF | 15.3 |
| First | 142 | Classroom | 16 | S | 22.2 |
| First | 142 | Classroom | 17 | DF | 21.8 |
| First | 128A | Kitchen- South Wall | 18 | S | 9.7 |
| First | 128A | Kitchen West Wall North | 19 | S | 31.7 |
| First | 128A | Kitchen- West Wall South | 20 | S | 78.7 |
| First | 128A | Kitchen - North Wall | 21 | Sprayer | 929 |
| First | 117 | Classroom | 22 | S | 21.1 |
| First | 117 | Classroom | 23 | DF | 18.8 |
| First | - | Hallway | 24 | WC | 1.4 |
| First | - | Hallway | 25 | BF | 1.5 |
| First | 113 | Lounge | 26 | S | 13.6 |
| First | 115C | Lounge | 27 | S | 4 |
| First | 111 | Classroom | 28 | S | 264 |
| First | 111 | Classroom | 29 | DF | 35.8 |
| First | 107 | Classroom | 30 | S | 46.1 |
| First | 107 | Classroom | 31 | DF | 52.8 |
| First | 105 | Classroom | 32 | S | 16.6 |
| First | 105 | Classroom | 33 | DF | 44.6 |
| First | 103 | Classroom | 34 | S | 42.4 |
| First | 103 | Classroom | 35 | DF | 112 |
| First | 100 | Classroom | 36 | S | 162 |
| First | 100 | Classroom | 37 | DF | 29.2 |
| First | 101 | Classroom | 38 | S | 45.3 |
| First | 101 | Classroom | 39 | DF | 39.7 |
| First | - | Hallway | 40 | DF | 3.4 |
| First | 1164 | Office | 41 | S | 602 |
| First | - | Lounge Bathroom | 42 | S | 2.3 |
| Second | 219 | Classroom | 43 | S | 34.1 |
| Second | 219 | Classroom | 44 | DF | 119 |

| Floor | Room Number | Location | Sample ID | Type DF = Drinking Fountain S = Sink WC = Water Cooler BF = Bottle Filler K=Kettle | Lead Result (ppb) |
|--------|-------------|-----------|-----------|---|-------------------|
| Second | 217 | Classroom | 45 | S | 45.2 |
| Second | 217 | Classroom | 46 | DF | 37.6 |
| Second | 215 | Classroom | 47 | S | 39.7 |
| Second | 215 | Classroom | 48 | DF | 144 |
| Second | 213 | Classroom | 49 | S | 30.3 |
| Second | 213 | Classroom | 50 | DF | 88.7 |
| Second | 211 | Classroom | 51 | S | 28.9 |
| Second | 211 | Classroom | 52 | DF | 36.1 |
| Second | 209 | Classroom | 53 | S | 12 |
| Second | 209 | Classroom | 54 | DF | 21.4 |
| Second | 207 | Classroom | 55 | S | 33.5 |
| Second | 207 | Classroom | 56 | DF | 24.7 |
| Second | 205 | Classroom | 57 | S | 19 |
| Second | 205 | Classroom | 58 | DF | 20.9 |
| Second | 200 | Classroom | 59 | S | 103 |
| Second | 200 | Classroom | 60 | DF | 46.2 |
| Second | 201 | Classroom | 61 | S | 47.7 |
| Second | 201 | Classroom | 62 | DF | 390 |
| Second | - | Hallway | 63 | DF | 13.3 |

Oak Park Elementary
 First Floor
 Lead in Drinking Water
 Project #19054



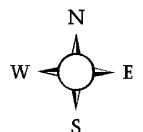
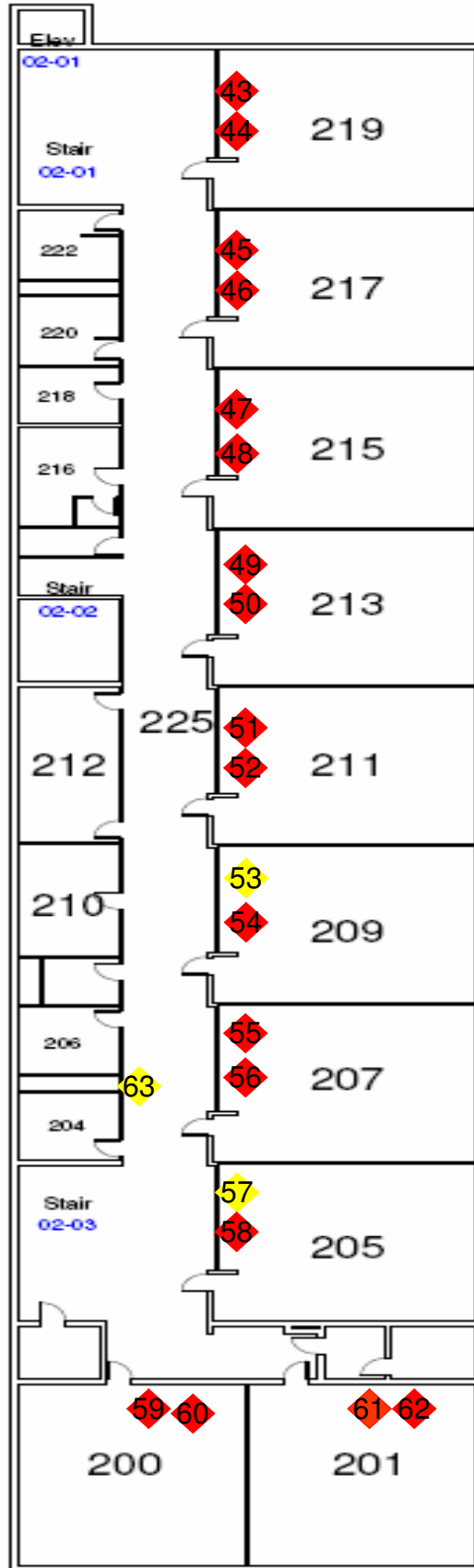
Sections of first floor have not been occupied this school year

Oak Park Elementary
 Second Floor
 Lead in Drinking Water
 Project #19054



First Draw Sampling (Nov 2018)

- ◆ Lead < 2 ppb
- ◆ 2 ppb <= Lead <= 20 ppb
- ◆ Lead > 20 ppb



Second floor has not been occupied during this school year