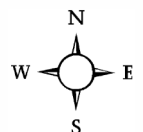
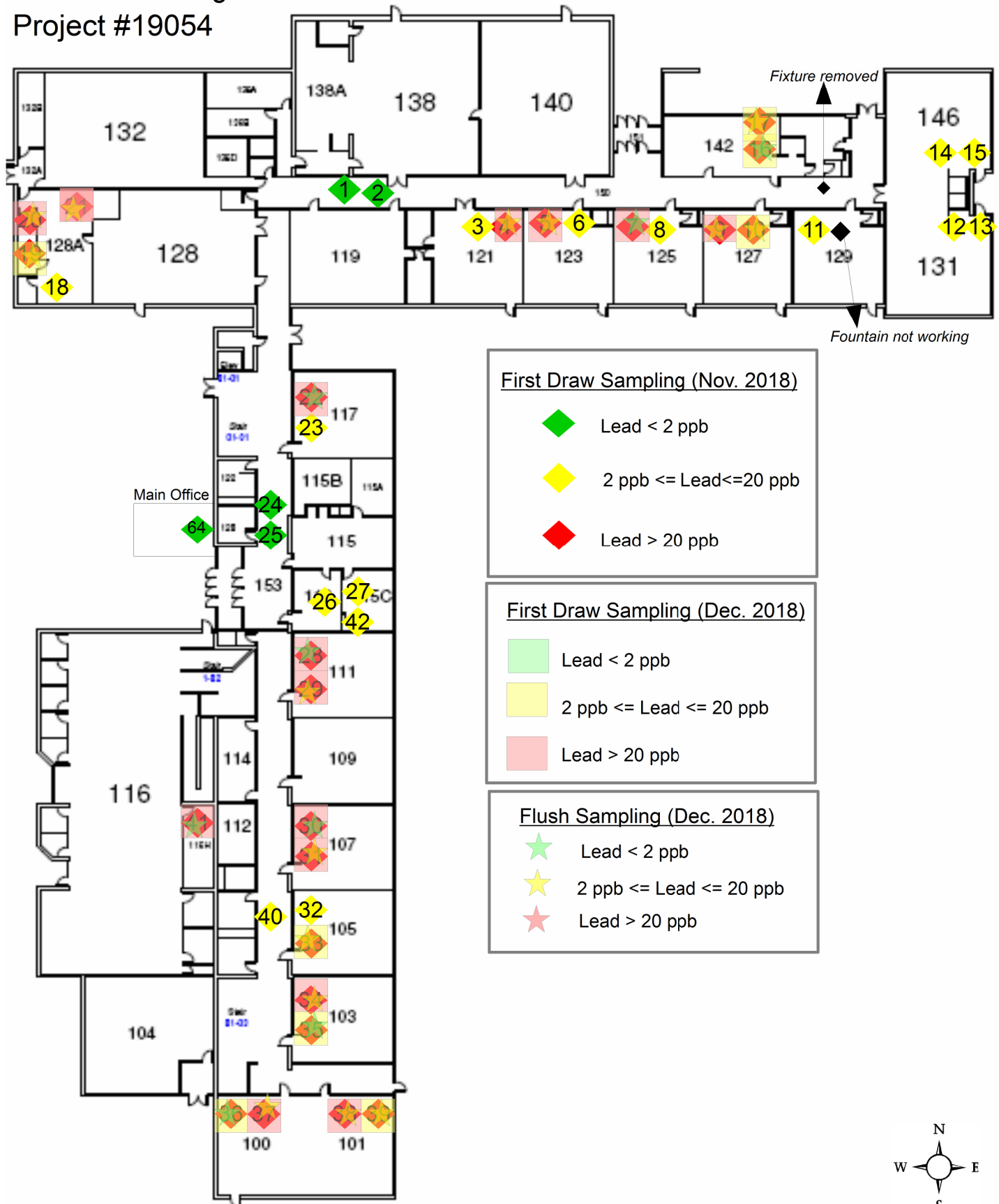


School Name: **Oak-Park Elementary (OP)**Date: **11/2/2018, 12/4/2018**

Floor	Room Number	Location	Sample ID	Type DF = Drinking Fountain S = Sink WC = Water Cooler BF = Bottle Filler K=Kettle	Lead Result 11/2/2018 (ppb)	Lead Result 12/4/2018 (ppb)	Lead Result 30 Sec Flush 12/4/2018 (ppb)	Lead Result 3 Min Flush 12/4/2018 (ppb)
First	-	Hallway	1	WC	ND	-	-	-
First	-	Hallway	2	BF	ND	-	-	-
First	121	Classroom	3	S	16.6	-	-	-
First	121	Classroom	4	DF	20.4	20.6	2.9	1.9
First	123	Classroom	5	S	21	241	14.3	2.5
First	123	Classroom	6	DF	12.1	-	-	-
First	125	Classroom	7	S	20.6	41.4	1.4	0.73
First	125	Classroom	8	DF	16.9	-	-	-
First	127	Classroom	9	S	31.4	431	2.4	1.3
First	127	Classroom	10	DF	29.3	13.4	2.1	1.6
First	129	Classroom	11	S	11.6	-	-	-
First	131	Classroom	12	S	13.2	-	-	-
First	131	Classroom	13	DF	18.2	-	-	-
First	146	Classroom	14	S	13	-	-	-
First	146	Classroom	15	DF	15.3	-	-	-
First	142	Classroom	16	S	22.2	19.3	1.5	0.67
First	142	Classroom	17	DF	21.8	16.4	3.5	2.8
First	128A	Kitchen- South Wall	18	S	9.7	-	-	-
First	128A	Kitchen West Wall North	19	S	31.7	18.2	3.2	0.81
First	128A	Kitchen- West Wall South	20	S	78.7	100	13.5	0.63
First	128A	Kitchen - North Wall	21	Sprayer	929	107	3.5	7.3
First	117	Classroom	22	S	21.1	38.8	1.5	1.2
First	117	Classroom	23	DF	18.8	-	-	-
First	-	Hallway	24	WC	1.4	-	-	-
First	-	Hallway	25	BF	1.5	-	-	-
First	113	Lounge	26	S	13.6	-	-	-
First	115C	Lounge	27	S	4	-	-	-
First	111	Classroom	28	S	264	64.8	0.98	0.73
First	111	Classroom	29	DF	35.8	28.8	3.5	2
First	107	Classroom	30	S	46.1	36.6	0.73	0.56
First	107	Classroom	31	DF	52.8	28.2	3	1.9
First	105	Classroom	32	S	16.6	-	-	-
First	105	Classroom	33	DF	44.6	19.6	6.8	2.4
First	103	Classroom	34	S	42.4	23	3.1	2.3
First	103	Classroom	35	DF	112	15.4	0.88	0.5
First	100	Classroom	36	S	162	19.1	1.8	1.1
First	100	Classroom	37	DF	29.2	21.4	2.7	2.4
First	101	Classroom	38	S	45.3	136	3	0.97
First	101	Classroom	39	DF	39.7	15.4	4.7	2.4
First	-	Hallway	40	DF	3.4	-	-	-
First	1164	Office	41	S	602	27.9	1.4	1.1
First	-	Lounge Bathroom	42	S	2.3	-	-	-
Second	219	Classroom	43	S	34.1	20.9	0.89	0.7
Second	219	Classroom	44	DF	119	12.7	5.2	2.3
Second	217	Classroom	45	S	45.2	22.9	1.3	0.9
Second	217	Classroom	46	DF	37.6	16	2.8	2.3
Second	215	Classroom	47	S	39.7	43.7	4.3	1.2
Second	215	Classroom	48	DF	144	49.7	3.4	1.7
Second	213	Classroom	49	S	30.3	28.4	1.7	1.1
Second	213	Classroom	50	DF	88.7	32	4.7	16.6
Second	211	Classroom	51	S	28.9	15.3	1	0.96
Second	211	Classroom	52	DF	36.1	22.4	3.7	1.6
Second	209	Classroom	53	S	12	-	-	-
Second	209	Classroom	54	DF	21.4	17.8	1.7	1
Second	207	Classroom	55	S	33.5	84	1.7	0.94
Second	207	Classroom	56	DF	24.7	16.2	1.6	0.94
Second	205	Classroom	57	S	19	-	-	-
Second	205	Classroom	58	DF	20.9	17.7	2.9	1.9
Second	200	Classroom	59	S	103	38.1	1.7	1.3
Second	200	Classroom	60	DF	46.2	13.1	3.5	3.9
Second	201	Classroom	61	S	47.7	18	0.72	0.52
Second	201	Classroom	62	DF	390	6.6	2.4	3.7
Second	-	Hallway	63	DF	13.3	-	-	-
First	-	Main Office/Nurse	64	S	-	2.9	0.18	0.2



Oak Park Elementary  
First Floor  
Lead in Drinking Water  
Project #19054



Sections of first floor are not occupied during 18-19 school year



# Oak Park Elementary Second Floor Lead in Drinking Water Project #19054



## First Draw Sampling (Nov. 2018)

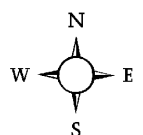
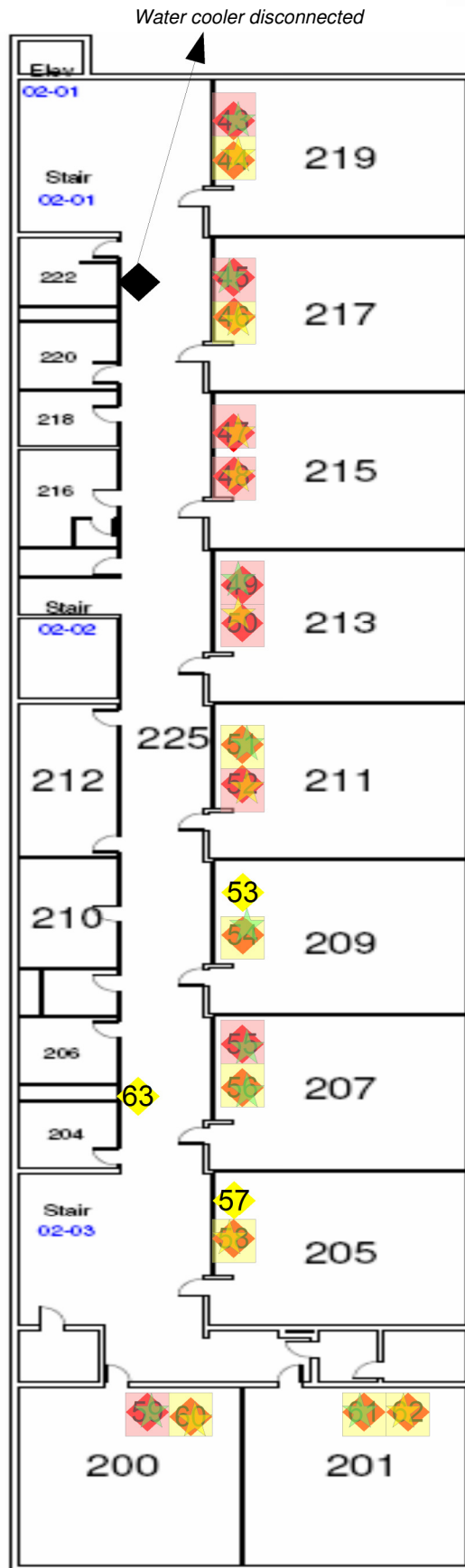
- ◆ Lead < 2 ppb
- ◆ 2 ppb ≤ Lead ≤ 20 ppb
- ◆ Lead > 20 ppb

## First Draw Sampling (Dec. 2018)

- Lead < 2 ppb
- 2 ppb ≤ Lead ≤ 20 ppb
- Lead > 20 ppb

## Flush Sampling (Dec. 2018)

- ★ Lead < 2 ppb
- ★ 2 ppb ≤ Lead ≤ 20 ppb
- ★ Lead > 20 ppb



Second floor is not occupied during 18-19 school year