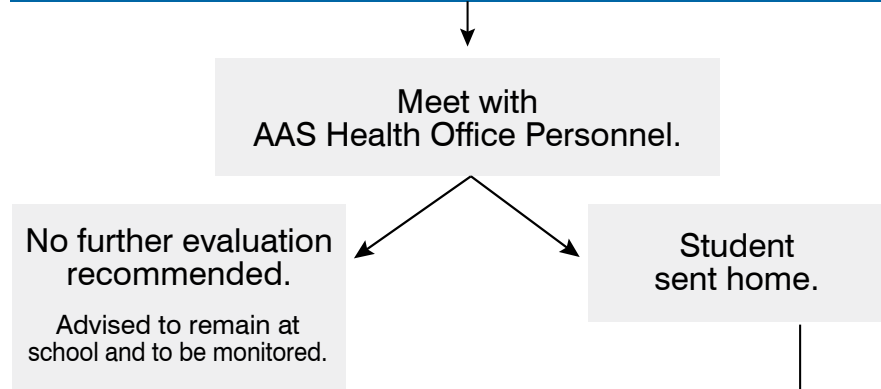
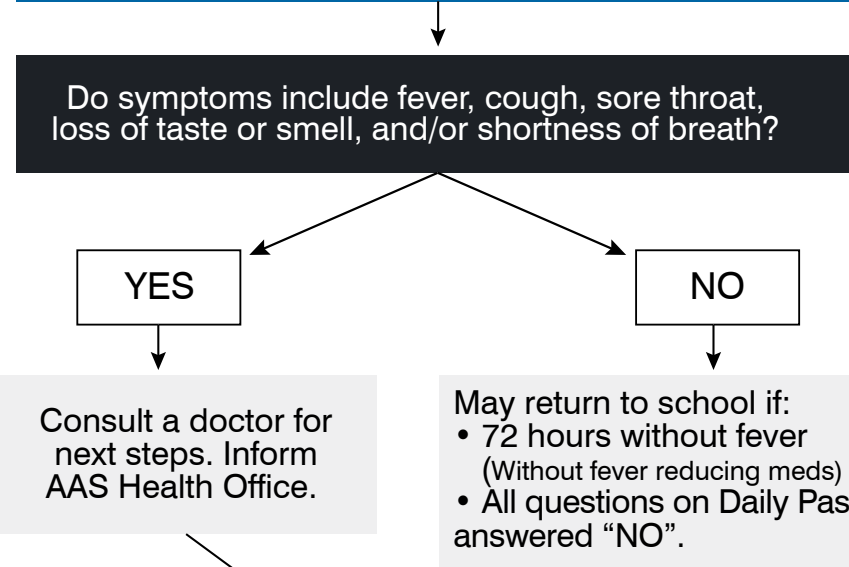


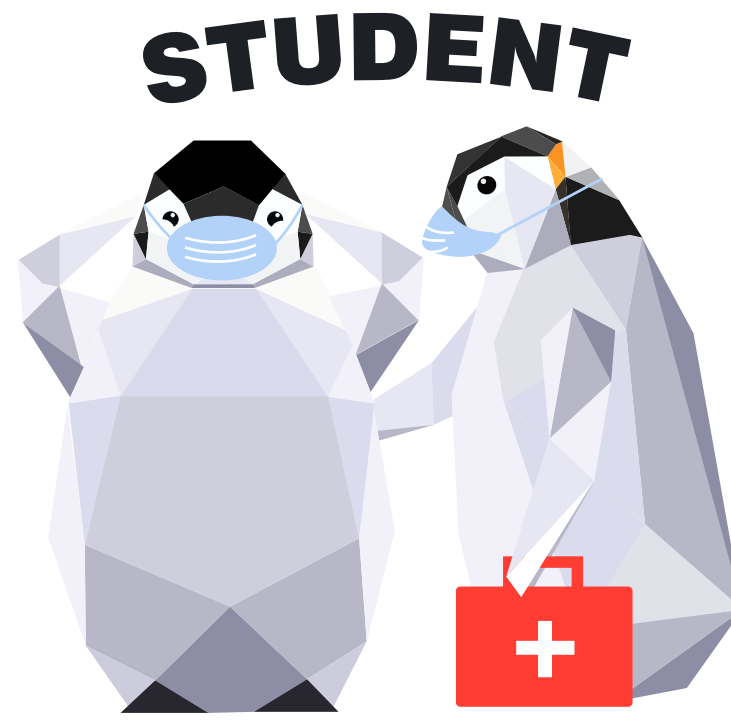
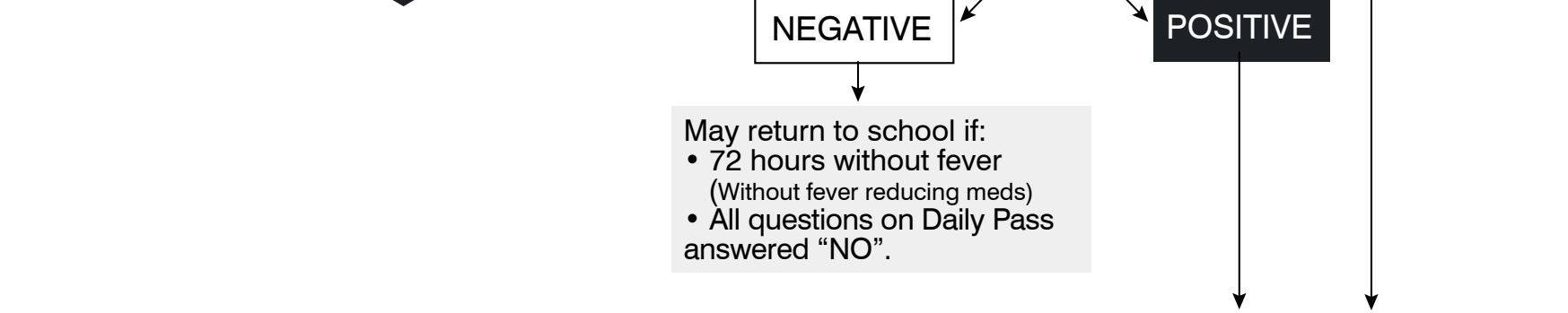
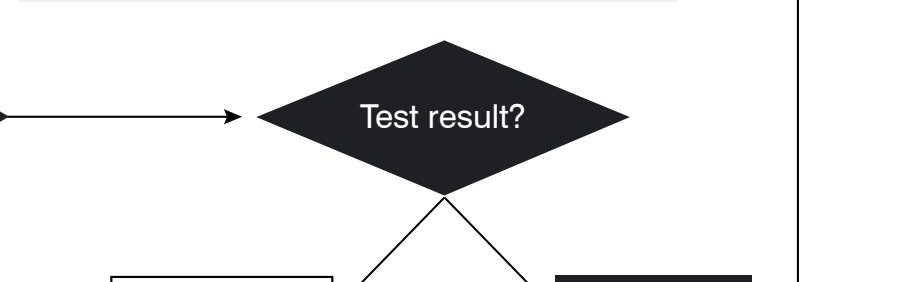
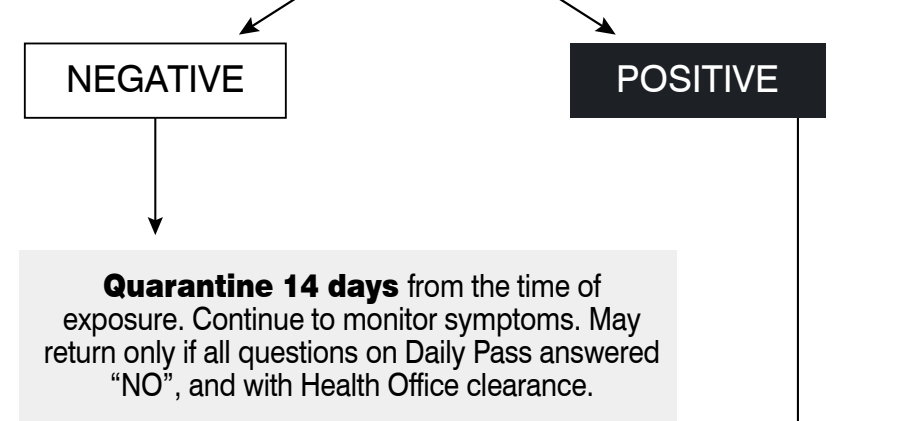
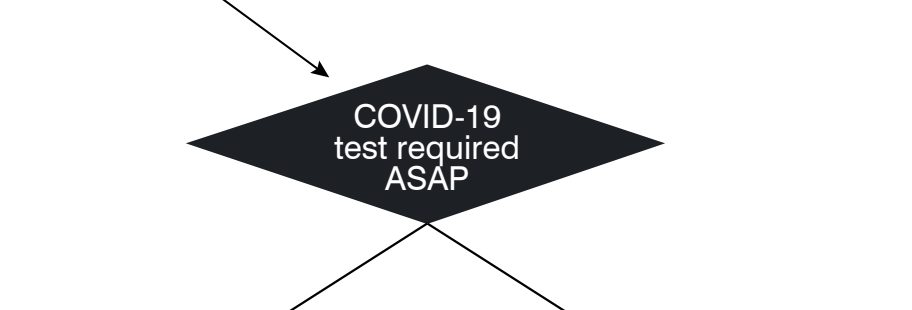
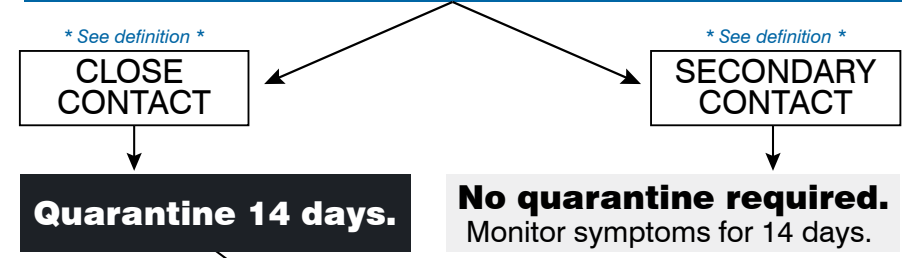
AAS STUDENT FEELS SICK OR HAS FEVER AT SCHOOL



AAS STUDENT IS SICK AT HOME



AAS STUDENT HAD CONTACT WITH CONFIRMED COVID-19 CASE



COVID-19 RESPONSE FLOWCHART



Definitions

Close contact	direct contact with anyone who has a confirmed COVID-19 case *Regardless of wearing a mask
Secondary contact	anyone that came in contact with a known close contact
Quarantine	separate and restrict the movement of people who were exposed to a contagious disease to see if they become sick / separate someone known to be sick from others (who are not sick)