



DUNCANVILLE
Independent School District

School Reopening in Two Ways - **ONE** D'ville



November Board Meeting

Enrollment and
Attendance

Method of
Instruction

COVID-19 Cases
Staff and Students

Personal Protective
Equipment



Technology
Updates

Enrollment and Attendance

11,794

Students Enrolled

96% of Projected Enrollment

92.95% Attendance Average

90.5% High School

94.9% Middle School

94.2% Intermediate School

94.4% Elementary School

Method of Instruction

3rd 9 Weeks Window: January 4th - 18th

	Total #	Total %
In-Person Learners	5272	44.7%
Virtual Learners	6526	55.3%

STUDENTS COVID UPDATE

48

TOTAL POSITIVE
CASES

20

CURRENT POSITIVE
CASES

117

QUARANTINED

STAFF COVID UPDATE

##

TOTAL POSITIVE
CASES

##

CURRENT POSITIVE
CASES

##

CLOSURES

PPE Update



12,000 Clear and Portable Desk Shields for Students Arrived and Deployed to Campus

All Paraprofessionals and Receptionist Areas have received Plexiglas.
A few locations need replacement due to a manufacturing quality issue.

Face Shields for Students arrived and deployed the week of November 9

Preparedness for Spring and Flu Season:
An additional order of PPE for Staff and Students arrived and will be deployed after Christmas Break

DEVICE DELIVERY UPDATE

Items	Quantity	Expected Arrivals	Funding
iPads	300	<i>Arrived 10/12</i>	Operation Connectivity
iPads	1,076 (216 for Swivls)	<i>Arrived 10/10/12</i>	2.8 Million
Chromebooks	500	October-December	Operation Connectivity
Chromebooks	2,745	Early February Update: November 2020	2.8 Million
Student Laptops	222	October-December	Operation Connectivity
Student Laptops	385	<i>Arrived Late September</i>	2.8 Million
Hotspots	750	<i>Arrived 9/2 and Deployed</i>	Operation Connectivity
	5,978 Devices		\$3,055,438.56

TECHNOLOGY

PILOT: 4 BUSES OUTFITTED WITH WIRELESS



STATUS

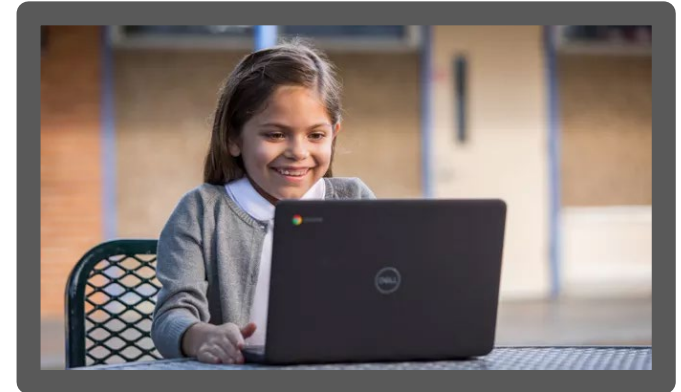
- ☒ Devices configured (IT)
- ☒ Devices installed (Transportations)
- ☒ Wifi credentials created (IT)
- ☒ Wifi made active (IT)
- ☐ Locations and scheduled finalized (Transportations)
- ☐ Marketing (Communications)
- ☐ Launch

SWIVL KITS

- Swivl Kits: Arrived
- Swivl iPads: Arrived
- Expected Delivery to Campuses & Training: End of November/December

STUDENT DEVICE NEEDS

Devices	Deployed	Still In Need
Laptops/ Chromebooks	~6,800	~192
iPads	~2,880	~70
Hotspots	~1,098	~55





QUESTIONS & COMMENTS