

SELF-SCREEN QUICK SHEET



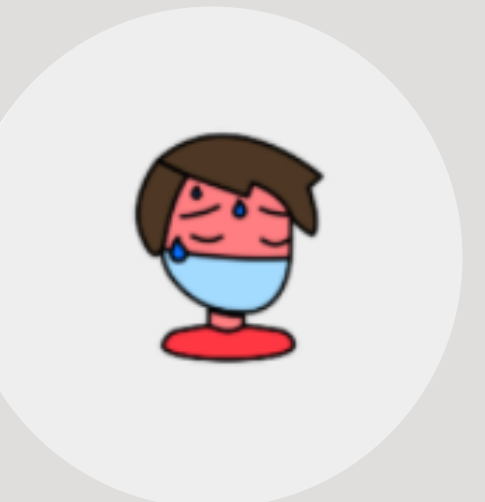
Before sending your student to school, you must screen them.

Answer the question: **Does my student meet one or more of the self-screen criteria listed?** If NO, you may send your student to school. If YES, follow the **Next Steps**.

SELF-SCREEN CRITERIA



Student has tested positive for COVID-19



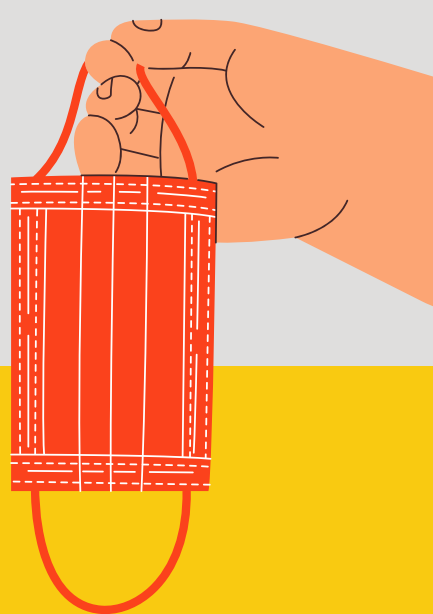
Student is experiencing symptoms* of COVID-19



Student has had close contact with someone who has tested positive for COVID-19

NEXT STEPS

1. Keep your student at home.
2. Call your school's attendance line to report your student's absence.
3. Fill out the [Student COVID-19 Form](https://stoughton.k12.wi.us) at stoughton.k12.wi.us under the "COVID-19" tab.
4. Contact your health care provider for next steps.



*Symptoms of COVID-19



- Cough
- Shortness of breath or difficulty breathing
- Fever equal to or greater than 100.4°F
- Chills
- Fatigue
- Muscle or body aches
- Headache
- Sore throat
- New loss of taste or smell
- Diarrhea
- Congestion or runny nose
- Nausea or vomiting