

# North Campus Neighborhood Meeting

Nov. 12, 2020



# www.isd624.org/NorthCampusNeighborhoodMeeting



## North Campus Neighborhood Meeting

View Livestream here  
(at 7 p.m. on Nov. 12)

Submit a question  
(form accessible during  
meeting)

*District Staff - If prompted, login with your isd624 username and password.*

*Members of the public - Login with:  
Username: [livestreamwbl@isd624.org](mailto:livestreamwbl@isd624.org)  
Password: Bears2020*

*The Question Submission form will be made live during the meeting. Questions and comments will be addressed at the end of the meeting. Any questions not addressed before 8:30 p.m. will be answered in a Q&A doc that will be compiled and shared after the meeting.*

# High School Alignment in White Bear Lake







White Bear Lake Area Schools

---

# **Preliminary Traffic Analysis**

**North Campus and Central Middle School Area Study**

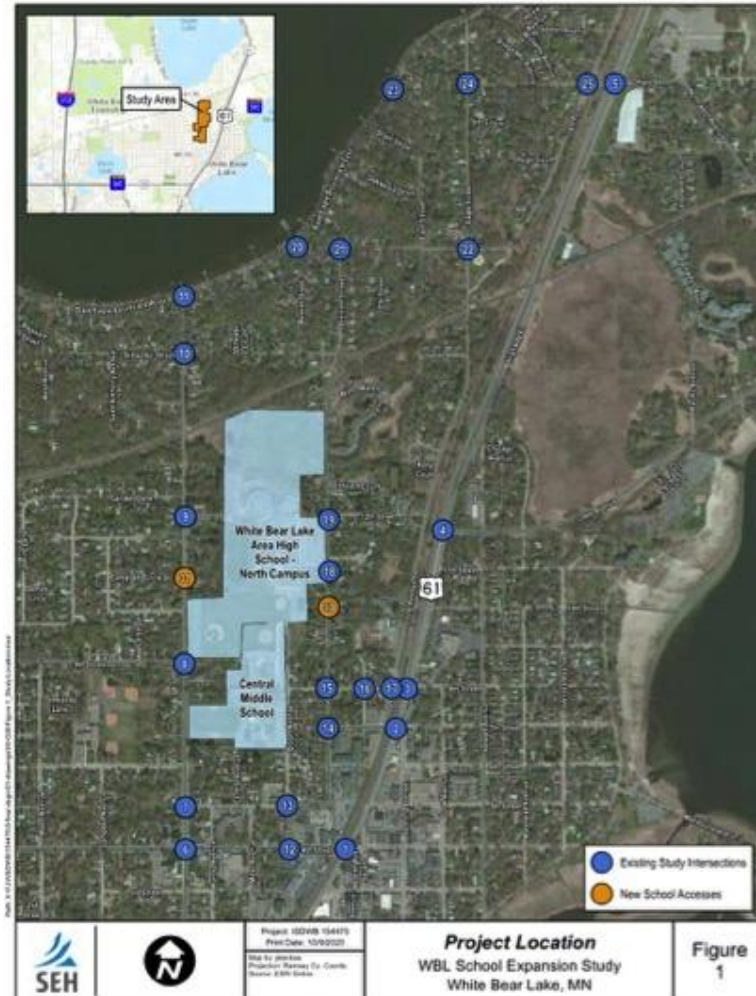
---

11/12/2020



# Study Intersections

- 27 intersections included in analysis
- StreetLight Data was used to develop turning movements
- Existing traffic counts along Highway 61 from previous study were used to refine traffic counts.



## Trip Distribution

- Trip distribution was based on School District demographic data
- School District has the ability to designate parking locations for students and staff
- The site plan includes pick up/drop off areas on each side of the high school
- Arriving and departing trips were distributed to the various roadway based on StreetLight Data and conversations with School District officials
- Analysis was based on Year 2028 Full Build out with 3,476 High School Students and 1,350 Middle School Students

## Traffic Forecasts

- 2% annual growth rate for Highway 61
- 0.5% for City Streets and Highway 96

# Traffic Operations Analysis Assumptions

- Traffic signal assumed at 8<sup>th</sup> Street and Highway 61
- Remove Highway 61 southbound left turn lane at 7<sup>th</sup> Street to increase length of northbound left turn lane at 8<sup>th</sup> Street
- Add right turn lane for eastbound 8<sup>th</sup> Street at Highway 61
- Add turn lanes at school access points on Division Avenue
- Add turn lanes at main school access point on Bald Eagle Avenue
- Space for two traffic lanes on 8<sup>th</sup> Street between Division Avenue and Highway 61
- Analyzing different school start and end time alternatives

# Traffic Operations Analysis

- Analyzed 27 intersections
- Short term congestion is expected at only a few locations:
  - Highway 61 at 4<sup>th</sup> Street, 7<sup>th</sup> Street, 8<sup>th</sup> Street, and Buffalo Street
- 8<sup>th</sup> Street
  - Possible traffic control change at Division Ave
  - Long westbound queues during the school arrival period



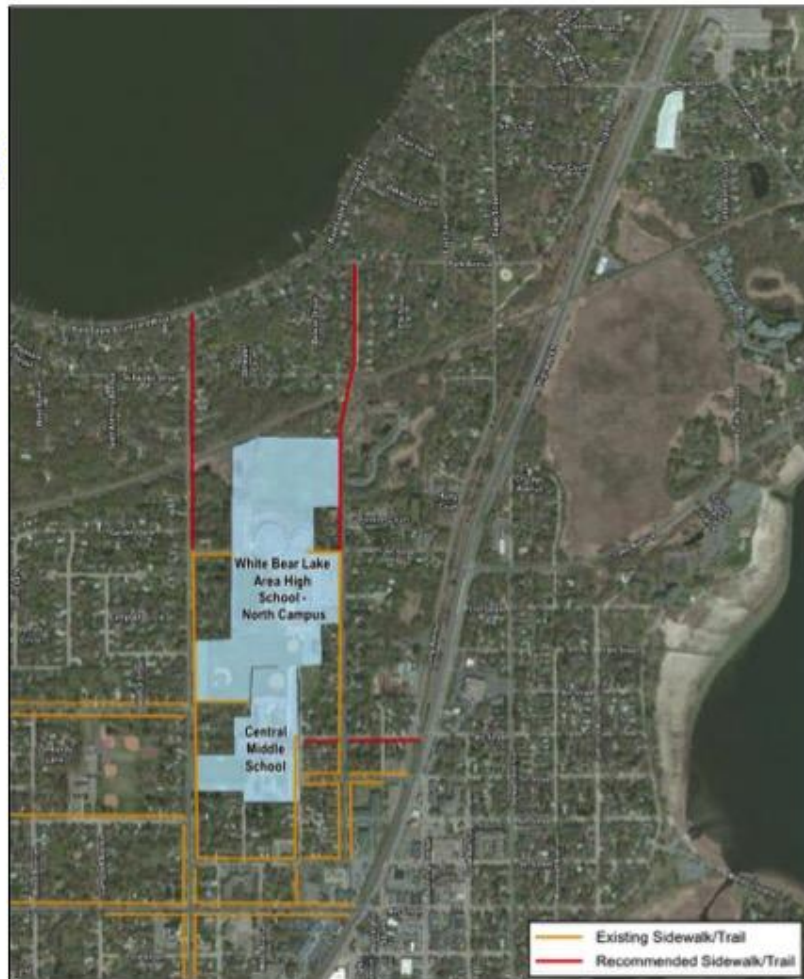
# Traffic Operations Analysis

- Division Avenue
  - Turn lanes needed for school access points to remove turning traffic from through lanes
- Bald Eagle Avenue
  - Turn lanes recommended for main school access point to remove turning traffic from mainline
- Hugo Road
  - Long traffic queues at Hugo Road/Buffalo Street during school dismissal



# Pedestrian Accommodations

- Sidewalk recommended along 8<sup>th</sup> Street
  - Highway 61 to Bloom Avenue
  - Additional discussion needed about which side of street
- Consider sidewalk connections to the north along Bald Eagle Avenue and Division Avenue





# Questions/Comments





# WHITE BEAR LAKE AREA SCHOOLS



## HIGH SCHOOL NEIGHBORHOOD MEETING

School Board Meeting

November 10, 2020



White Bear Lake  
Area Schools



White Bear Lake  
Area Schools

# REFERENDUM PROJECTS UPDATE

## PRESENTATION AGENDA

### Referendum Projects Completed:

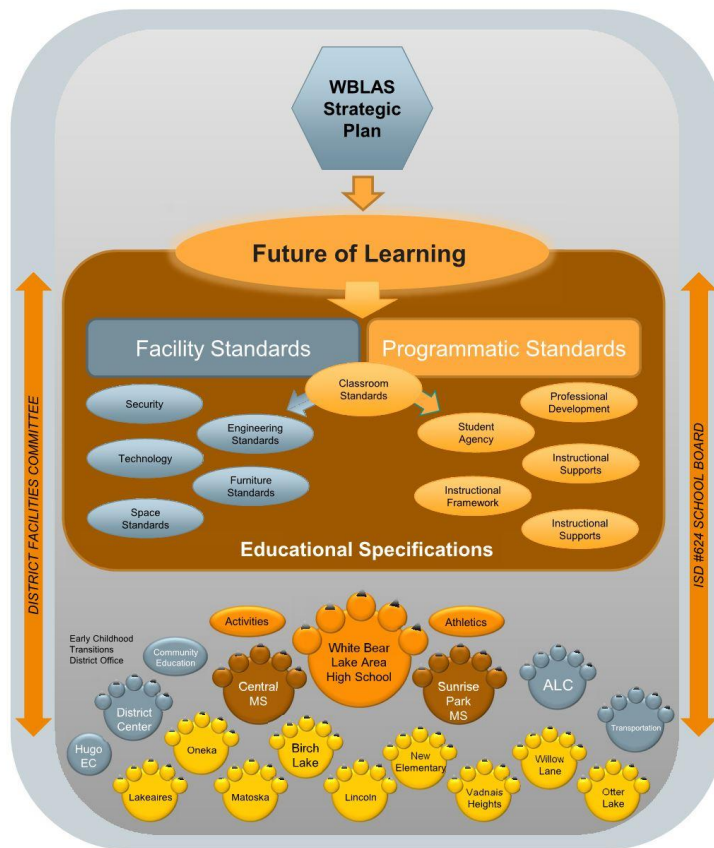
- ALC Security Renovation

### Referendum Projects Bid / in Construction:

- Lincoln Elementary School
- Matoska Elementary School
- Vadnais Heights Elementary School
- Willow Lane Elementary School
- New Transportation / Maintenance Facility
- South Campus Gym Addition

### Referendum Projects in Design:

- **New Elementary School**
- **White Bear Lake Area High School**
- South Campus Phase II Addition
- Phase I - New Classroom Furniture





**WB** White Bear Lake  
Area Schools



# WHITE BEAR LAKE AREA HIGH SCHOOL



White Bear Lake  
Area Schools

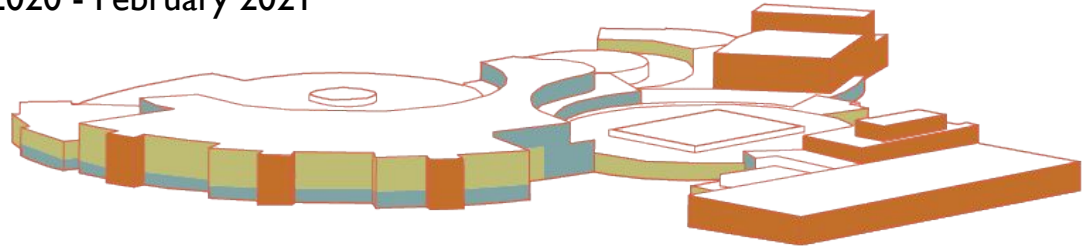
# HIGH SCHOOL PROJECT SCOPE & SCHEDULE

## Project Scope:

- Additions and renovations to create a comprehensive 9-12 high school
- New furniture
- Upgrades and expansion to kitchen and cafeteria
- 375,000 square foot addition
- \$179M total project cost including building, and on and off site improvements
- \$25M LTFM

## Schedule:

- Schematic Design (Core Planning Group): late January 2020 - May 2020
- Design Development (User Groups): June 2020 - February 2021
- Bidding / Construction Starts: Spring 2021
- Opens in phases over the next 4 years





White Bear Lake  
Area Schools

# HIGH SCHOOL PROJECT COMMITMENTS

- The design will be **future-ready and forward thinking**, and adapt to the changing needs of the community over time.
- The design will honor and embrace all cultures. It will be rooted in the **history of the area while reflecting the present culture** and WBLAS community sensibilities.
- The building will be an **inclusive place** where learners can explore their evolving interests, and develop a sense of community. Learning studios should be organized to create a **“small-school feel”** within the high school.
- The building and programming will **actively support student agency** while providing guidance and support in their educational journey.
- **Special Education spaces should be distributed** to provide inclusion and opportunities for learners.



White Bear Lake  
Area Schools

# HIGH SCHOOL DESIGN CRITERIA

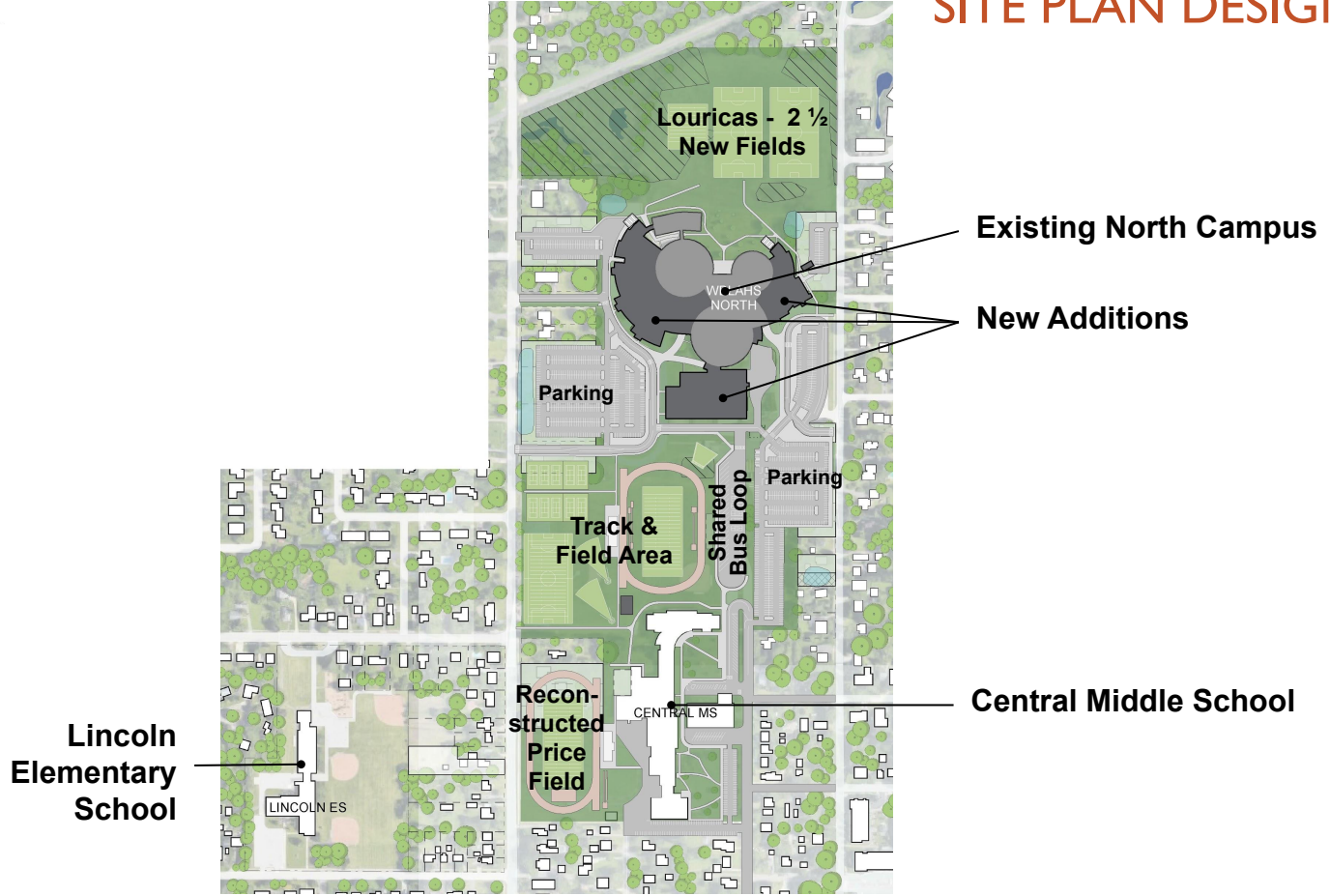
- The building provides **spaces for meaningful collaboration** for staff, learners and the community.
- **The Union serves as the central connecting space** within the building, connecting the main entry, learning studios, fine arts, and athletics areas.
- The Learning Commons should be a space for innovation and technology and a resource for all learners and staff.
- Spaces within the Learning Commons should **allow for collaboration between learners and their peers** (in both small and large groups), as well as with staff and community partners.
- Learning Commons should have a **direct physical and visual connection to the multi-story Student Union** and be a **central element (hub) within the school**.
- The building will have dedicated spaces for staff collaboration, rest, and support. **Staff offices or “home bases” will be distributed** among the learning spaces in proximity to the areas in which they are teaching at the time. Staff offices should be secure and private.
- **Specialty learning spaces** (pathways, science, FACS) should be **easily accessible from all learning studios**.
- Organization of learning studios should support **collaboration around both content and learners**.





White Bear Lake  
Area Schools

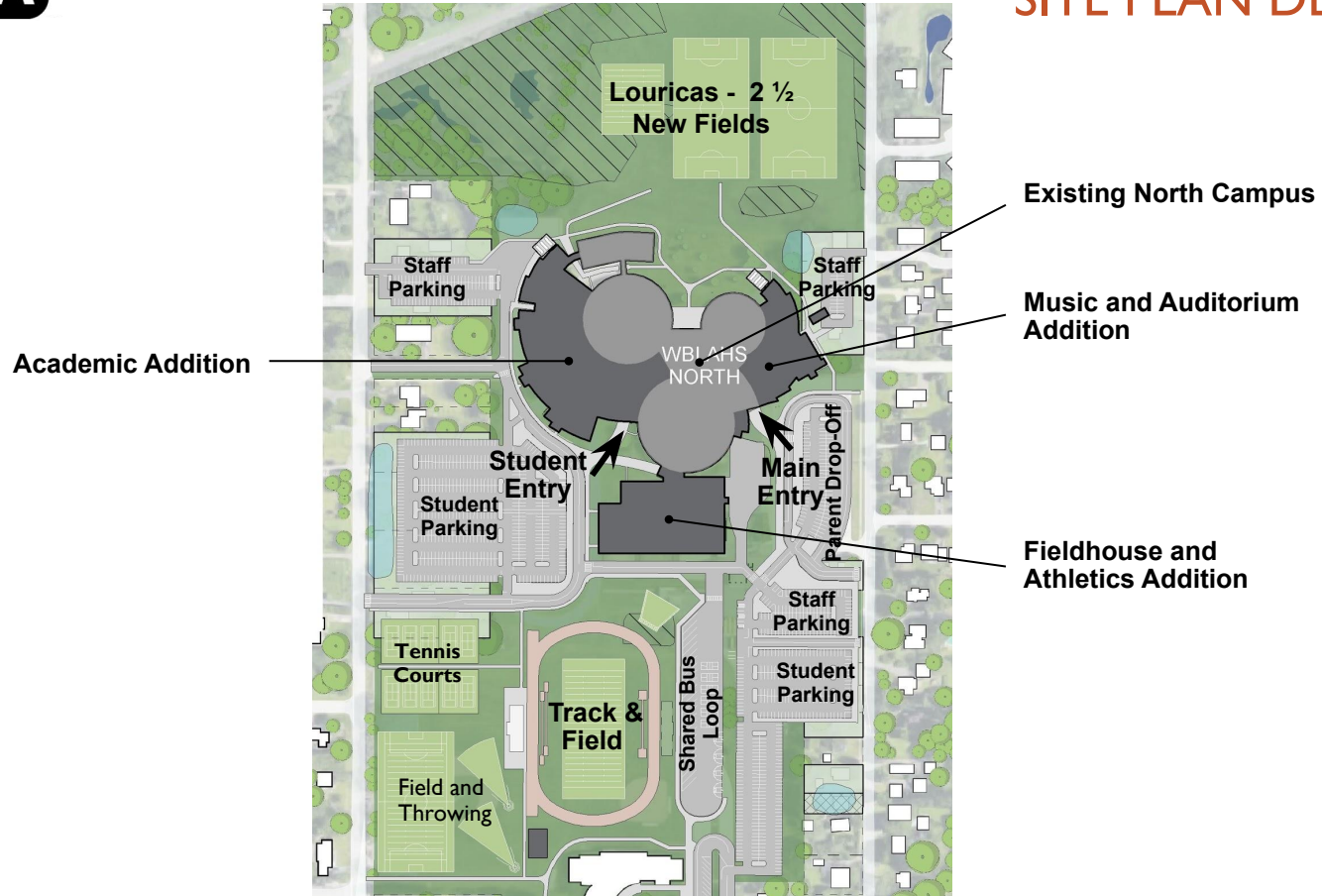
# HIGH SCHOOL SITE PLAN DESIGN





White Bear Lake  
Area Schools

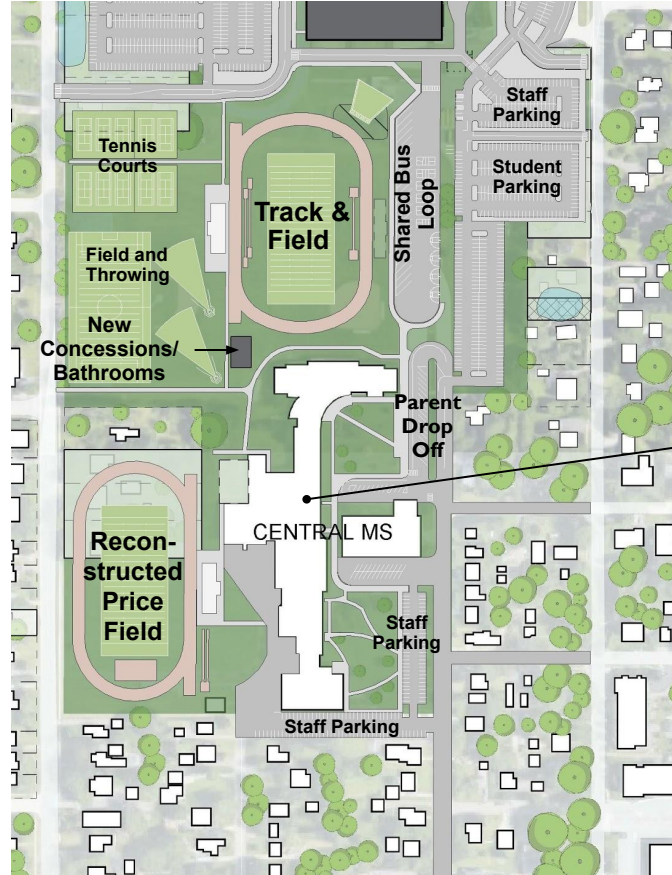
# HIGH SCHOOL SITE PLAN DESIGN





White Bear Lake  
Area Schools

# HIGH SCHOOL SITE PLAN DESIGN



Central Middle School



White Bear Lake  
Area Schools



# HIGH SCHOOL DESIGN INSPIRATION

## Lakes and Ponds in District

- **Bald Eagle Lake**
- **Oneka Lake**
- **Vadnais Lake**
- **White Bear Lake**
- Amelia Lake
- Birch Lake
- Black Lake
- Egg Lake
- Gem Lake
- Gilfillan Lake
- Goose Lake
- Oak Knoll Pond
- Otter Lake
- Peppertree Ponde
- Priebe Lake
- Rice Lake
- Tamarack Lake
- Twin Lake
- Waterbury Pond
- Willow Lake





White Bear Lake  
Area Schools

# HIGH SCHOOL DESIGN INSPIRATION





White Bear Lake  
Area Schools

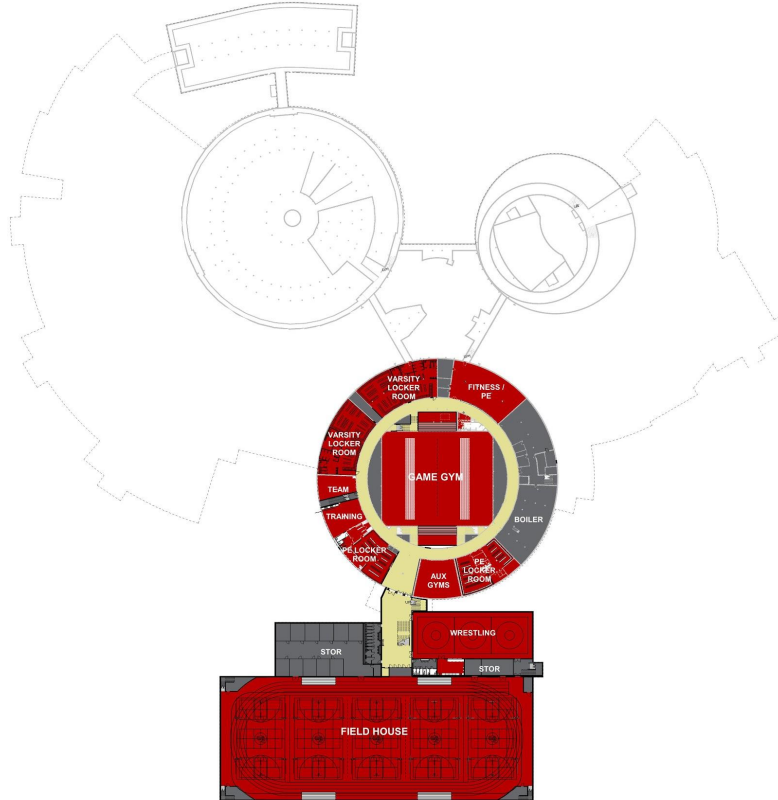
# HIGH SCHOOL MAIN LEVEL FLOOR PLAN





White Bear Lake  
Area Schools

# HIGH SCHOOL LOWER LEVEL FLOOR PLAN

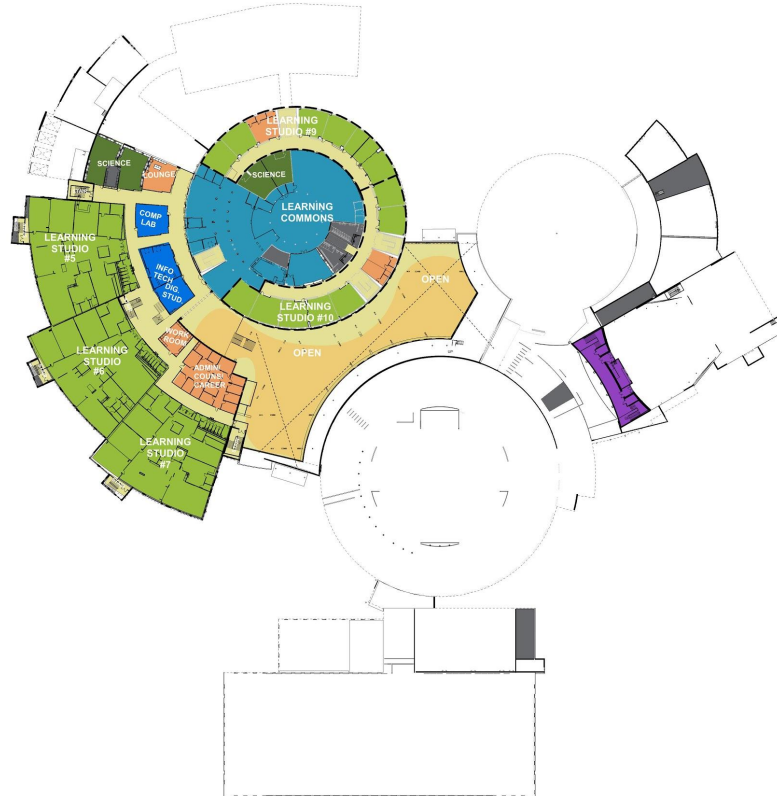






White Bear Lake  
Area Schools

# HIGH SCHOOL SECOND LEVEL FLOOR PLAN





White Bear Lake  
Area Schools

# HIGH SCHOOL THIRD LEVEL FLOOR PLAN





White Bear Lake  
Area Schools

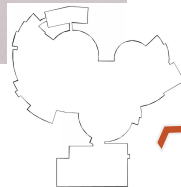
# HIGH SCHOOL EXTERIOR VIEW





White Bear Lake  
Area Schools

# HIGH SCHOOL EXTERIOR VIEW







White Bear Lake  
Area Schools

# HIGH SCHOOL EXTERIOR VIEW



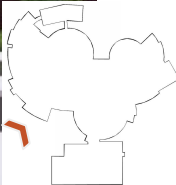
STUDENT ENTRY





White Bear Lake  
Area Schools

# HIGH SCHOOL EXTERIOR VIEW





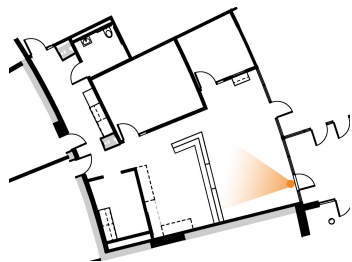


White Bear Lake  
Area Schools

# HIGH SCHOOL INTERIOR VIEW



MAIN OFFICE







# WHITE BEAR LAKE AREA SCHOOLS



## REFERENDUM PROJECTS UPDATE

# THANK YOU!



White Bear Lake  
Area Schools

# www.isd624.org/NorthCampusNeighborhoodMeeting



## North Campus Neighborhood Meeting

View Livestream here  
(at 7 p.m. on Nov. 12)

Submit a question  
(form accessible during  
meeting)

*District Staff - If prompted, login with your isd624 username and password.*

*Members of the public - Login with:  
Username: [livestreamwbl@isd624.org](mailto:livestreamwbl@isd624.org)  
Password: Bears2020*

*The Question Submission form will be made live during the meeting. Questions and comments will be addressed at the end of the meeting. Any questions not addressed before 8:30 p.m. will be answered in a Q&A doc that will be compiled and shared after the meeting.*

