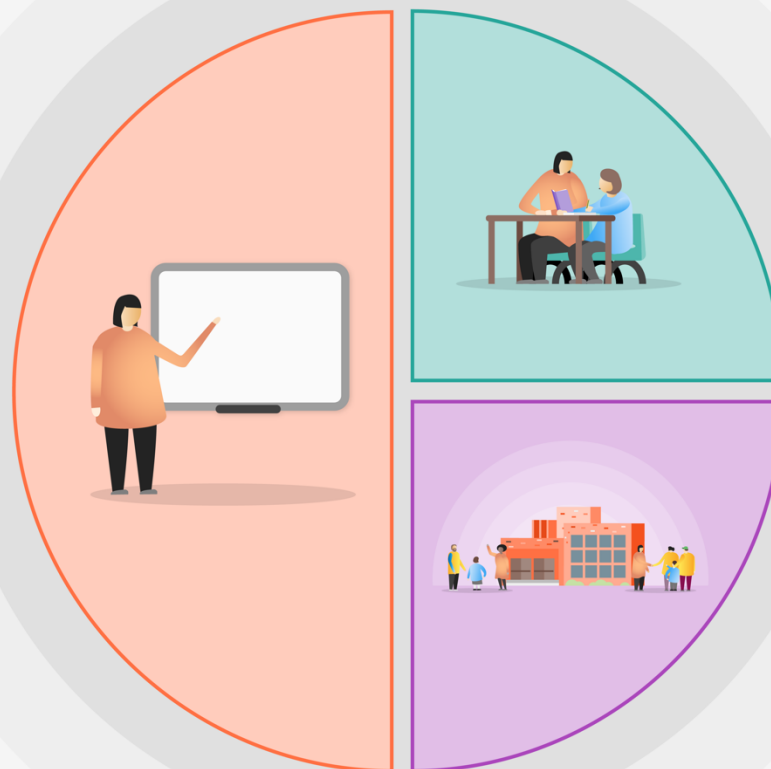


1 Teaching

- Development of Maths Mastery approach supported by external specialists (**Bright Pi**)
- Quality First Teaching supported by evidence-informed CPD for teachers and support staff (**Bright Pi**)
- A broad and engaging curriculum that focuses on vocabulary acquisition
- A whole class reading approach (VIPERS) *underpinned by clearly defined formative assessment practices.*
- Release time for all subject leaders to quality assess delivery of core and wider curriculum
- Coaching for new subject leaders



2 Targeted academic support

- Strategic deployment of TA's
- Literacy and intervention programmes lead by Teaching Assistants (**Phonics intervention. Maths Intervention**)
- 'In session coaching' provided by Specialist Teaching Service
- **Additional deployment of TA.**

3 Wider strategies

- Attendance monitoring with parent liaison for targeted pupils.
- School staff used to cover classes rather than supply staff.
- **Nurture provision for identified pupils**