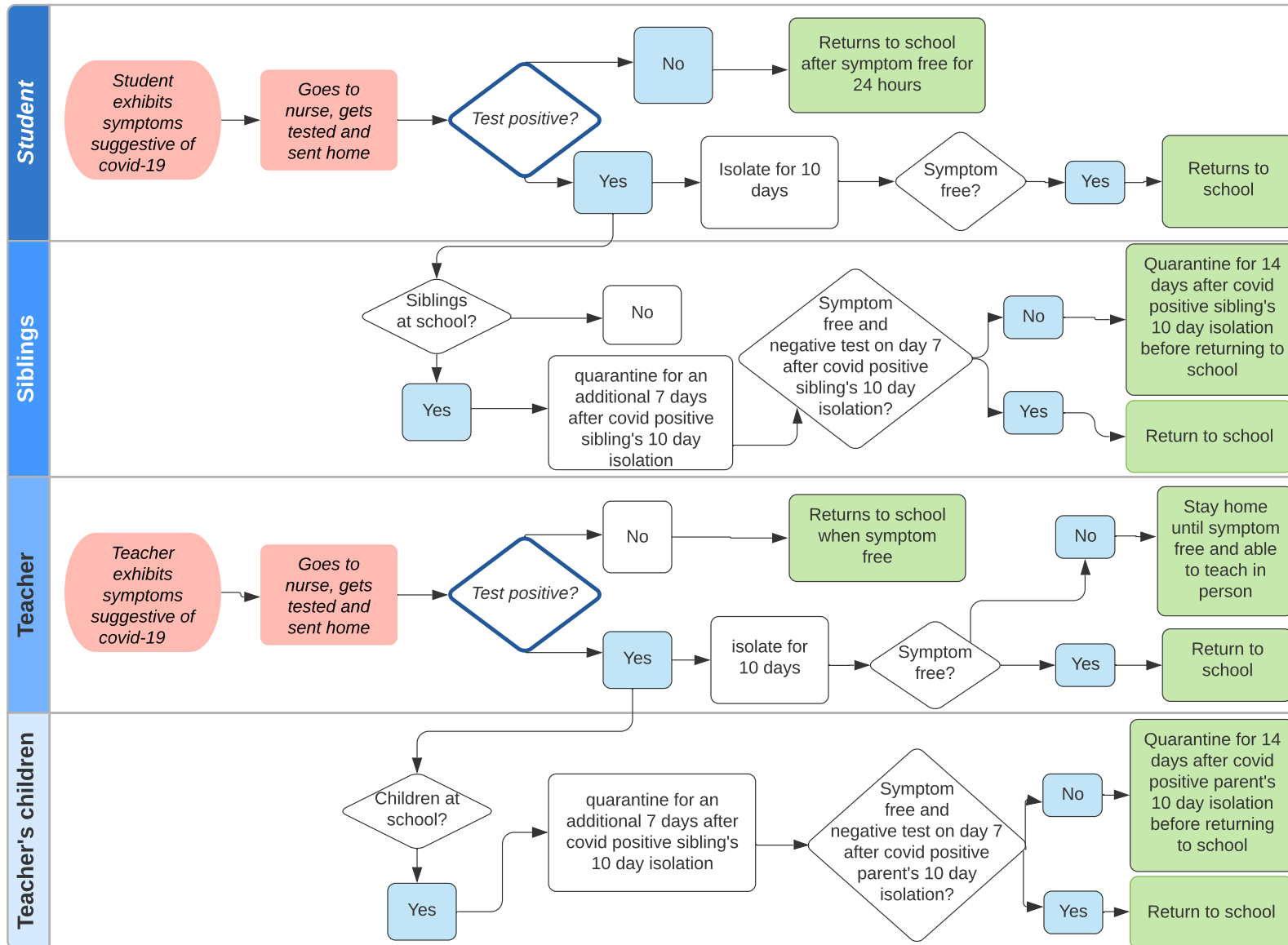


This flow chart is intended to provide a high-level understanding of how the school will handle students or staff members who test positive for the virus. Each case, however, is unique, which is why we will rely on the advice of the medical professionals on our Pandemic Advisory Council (a Council composed of four local medical professionals and other parents and school administrators) as we evaluate each case individually.

Student and Teacher COVID Positive Response Flows



Boxes shaded blue indicate when the communication occurs either by phone or by email to those affected

In each instance where testing occurs, the results must be submitted to the school nurse.