



Education to Employment

Giving Tomorrow's Workforce the Tools to Succeed!

Education to Employment (E2E) is for students ages 14-21, with an IEP, a 504 plan, or a disability and live in an approved county in the state of Utah.

E2E partners with local employers and is designed to help students explore career options and prepare them for the transition from high school to either college or the world of work.

After working together to determine a career pathway, the Career Advocate will provide or arrange for a variety of tailored pre-employment transitional services to break down barriers between the student and their dream job.



For more information or to begin enrollment in the program, contact us!

Area Career Advocate: Alisha Byron
Telephone: (801) 499-4997
Email: abyron@lsiwins.com
www.lsiwins.com/E2EUT

LSI

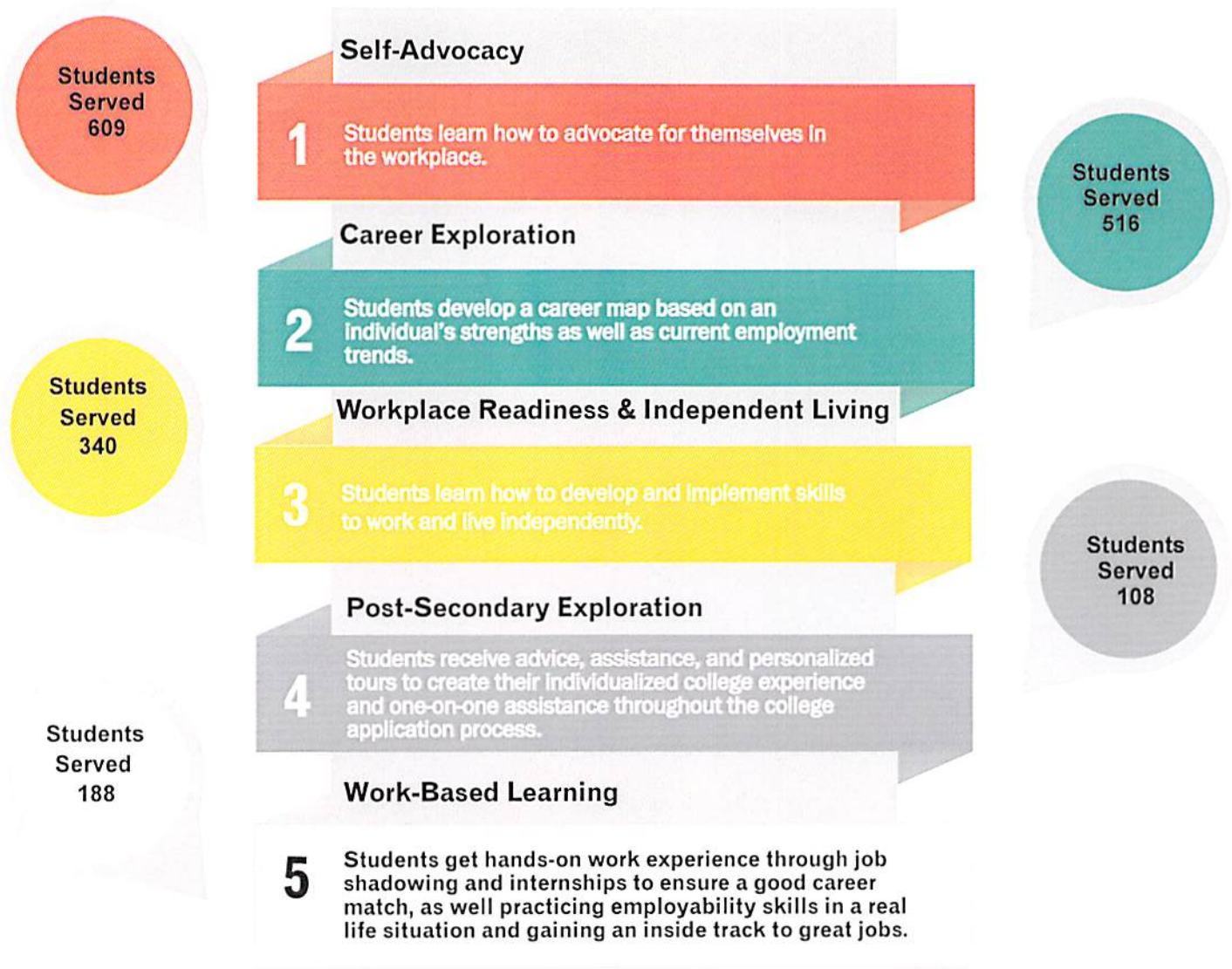


"I like talking about and planning for my future. LSI has helped me explore what I want to do after high school." - Kanab High School Student

"I have loved learning more about the nursing field! I am so excited for my job shadow at a hospital! I know this is what I want to do!"- Piute High School Student

"I've got a good start on my resume and how to apply for college. I'm so glad LSI has helped me prepare for my future."- Sky View High School Student

"The LSI program has been so beneficial for our special education students. There are many transition requirements students must meet and this program helps fulfill those requirements so easily!" - Special Education Teacher



Currently serving 22 counties in Utah with the exception of Utah, Rich, Summit, Daggett, Wasatch, Duchesne, and Uintah.