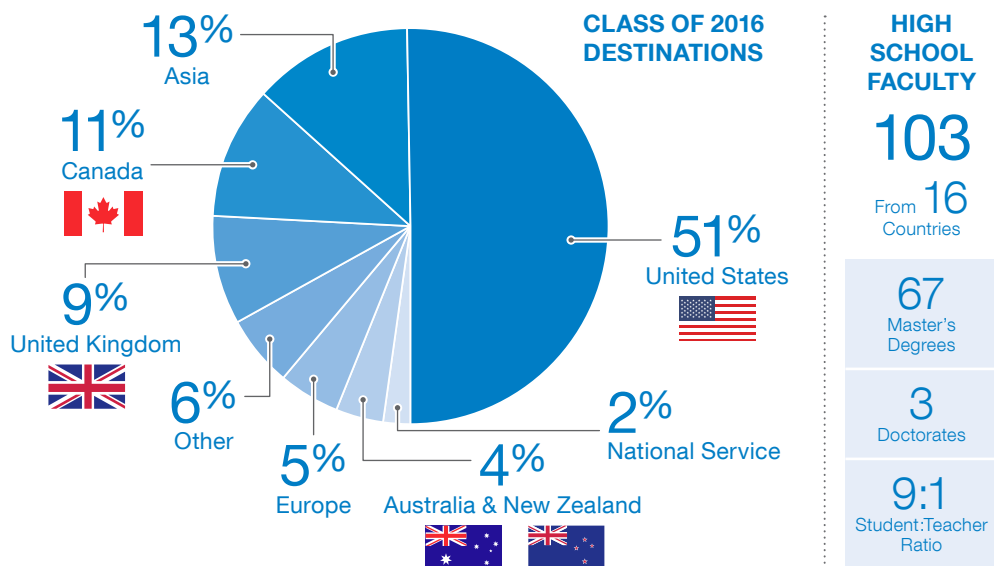
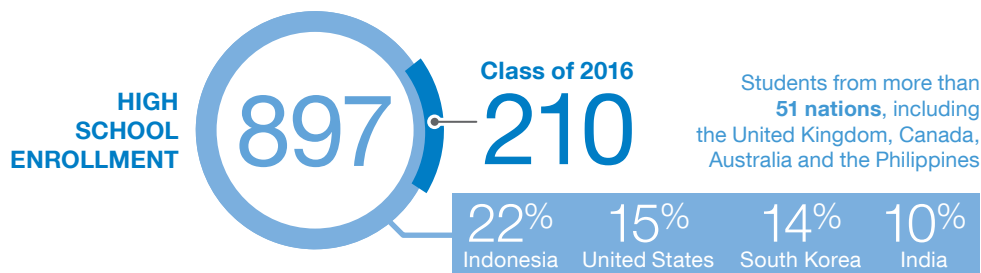


## 2017 UPDATES

- Class of 2017: 220
- New Indonesian government regulations mandate all Indonesian students take Indonesian language, literature and civics courses then national exams in grades 9 and 12
- JIS CAS - all students are required to complete Creativity, Activity, and Service throughout HS
- New redesigned SAT scores in 2017



## ABOUT JIS

- Established in 1952 as an Independent, non-profit, co-educational institution where English is the medium of instruction
- Accredited by Western Association of Schools and Colleges (WASC)
- Membership in Council of International Schools (CIS), East Asia Regional Council of Schools (EARCOS) and National Association of Independent Schools (NAIS)

## CURRICULUM

- U.S. High School Diploma issued upon graduation
- International Baccalaureate® (IB®) and Advanced Placement® (AP®) courses offered
- Academic calendar: 36 weeks (two semesters); from August to June
- Block schedule, five 75-minute class periods per school day

## ACTIVITIES

- 65+ service, sports & fitness, special interest, language, and academic clubs
- National and Tri-M Music Honor Societies
- Participation in IASAS (Interscholastic Association of Southeast Asia Schools) including 11 varsity sports for boys and girls, as well as Performing Arts, Model United Nations, and Debate/Forensics

## ADMINISTRATION

- Tim Carr**  
Head of School
- Steve Clark**  
High School Principal
- Alethea Young**  
Vice Principal for Curriculum & Learning
- Barbara Wiemers**  
Vice Principal for Student Affairs
- Craig Ortner**  
IB / AP Coordinator

CEEB CODE **672090**  
IB CODE **000104**

**P.O. Box 1078 / JKS**  
**Jakarta 12010**  
**Indonesia**

[www.jisedu.or.id](http://www.jisedu.or.id)

## COUNSELING

Full-service comprehensive counseling program for grades 9 to 12, based on the International School Counseling Association (ISCA) model. Individualized service for students and families in personal/social, academic, transitions and careers/university counseling.

## HIGH SCHOOL COUNSELORS

**Aleka Bilan**  
abilan@jisedu.or.id

**Michelle Burlock**  
mburlock@jisedu.or.id

**Heather Cook**  
hecook@jisedu.or.id

**Tony Dickinson**  
adickinson@jisedu.or.id

**Joe Tavares**  
jtavares@jisedu.or.id

**Andrew Warren**  
awarren@jisedu.or.id



## International Baccalaureate® Program 2016

IB® Diploma Candidates

**105**

50% of Class of 2016

Global Passing Rate 2015

**81%**

JIS Passing Rate 2016

**98%**

Global Average Score

**30**

JIS Average Score

**35**

All students enrolled in an IB® or AP® class are required to sit the exam

### 2016 IB® Score Distribution (Number of Students)

Score	7	6	5	4	3	2	1	Total
Group 1 A Language	12	63	64	19	0	0	0	158
Group 2 B Language	18	83	49	10	1	0	0	161
Group 3 Social Science	38	84	58	35	7	2	0	224
Group 4 Science	21	64	57	39	23	8	0	212
Group 5 Mathematics	13	41	50	35	15	1	0	155
Group 6 Art	6	13	8	1	0	0	0	28

## SAT / ACT Results

Class of 2016

### SAT Students: 183

	Mean	Middle 50%
Critical Reading	587	520 - 660
Math	646	570 - 720
Writing	592	530 - 670
<b>Total</b>	<b>1825</b>	<b>1650 - 2010</b>

Redesigned SAT data will be available for Class of 2017

### ACT Students: 36

	Mean	Middle 50%
English	29.0	24 - 34
Math	28.1	25 - 32
Reading	27.8	23 - 32
Science Reasoning	27.1	25 - 29
<b>Composite</b>	<b>28.1</b>	<b>24 - 31</b>

## Advanced Placement® Exams 2016

Total AP® Exam Takers

**164**

Total AP® Exams

**342**

AP® Students with Scores 3+

**150**

AP® Students with Scores 3+

**92%**

Group	5	4	3	2	1	Total (by group)
English	12	17	21	10	0	60
Soc. Science	60	35	17	4	3	119
Science	13	22	22	10	5	72
Math	33	20	13	7	8	81
Arts	7	1	2	0	0	10

## Grading System

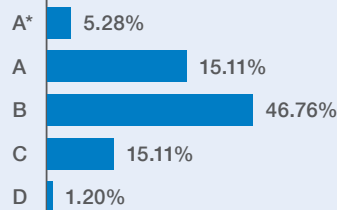
A*	4.3
A	4.0
B	3.0
C	2.0
D	1.0
F	0.0

NG = No Grade  
WP = Withdraw / Pass  
WF = Withdraw / Fail

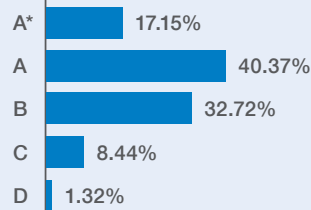
Note: Percentile boundaries vary by department

## Grade Distribution

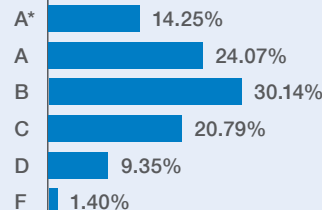
### English



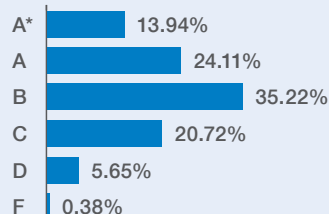
### Modern Language



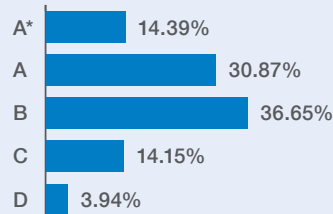
### Math



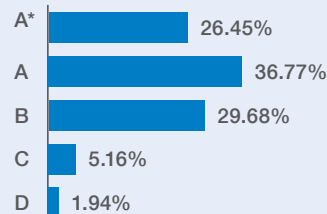
### Science



### Social Studies



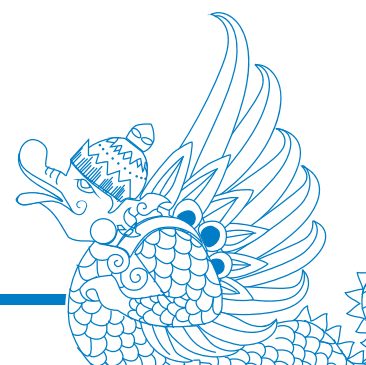
### Creative Arts



In accordance with our mission and policies, JIS does not rank its students.

Only classes taken at JIS are reported on the transcript and included in GPA calculations.

The GPA for Class of 2015 and onward is unweighted.



## Class of 2015 & 2016 University Matriculations (Total Students)

JIS students are limited to ten (10) applications globally. An application from a JIS student is a well-considered one.

### AUSTRALIA

- RMIT University
- University of Canberra
- UNSW

### AUSTRIA

- MCI Management Center Innsbruck

### CANADA

- Emily Carr University of Art + Design
- Lakehead University
- Langara College (2)
- McGill University (7)
- Simon Fraser University (2)
- University of Alberta
- University of British Columbia (13)
- University of Ottawa
- University of Toronto (12)
- University of Victoria (4)
- University of Waterloo (6)
- University of Westminster (2)
- Vancouver Island University

### FRANCE

- The American University - Paris

### HONG KONG

- Hong Kong Polytechnic University
- Savannah College of Art and Design Hong Kong
- The Hong Kong University of Science and Technology
- University of Hong Kong

### INDONESIA

- Bandung Institute of Technology
- University of Indonesia (2)

### JAPAN

- Keio University (2)
- Waseda University (4)

### MALAYSIA

- International Medical University
- University of Nottingham in Malaysia
- HELP University

### NETHERLANDS

- Leiden University
- Rotterdam School of Management, Erasmus University (2)
- Universiteit Maastricht
- University of Amsterdam
- Wageningen University

### PHILIPPINES

- Ateneo de Manila University

### SINGAPORE

- Singapore Institute of Management
- Yale-NUS College (3)

### SPAIN

- Universidad de Navarra

### SOUTH KOREA

- Korea University (5)
- Seoul National University (6)
- Sungkyunkwan University (2)
- Yonsei University

### TRINIDAD & TOBAGO

- University of Trinidad & Tobago

### UNITED ARAB EMIRATES

- New York University: Abu Dhabi

### UNITED KINGDOM

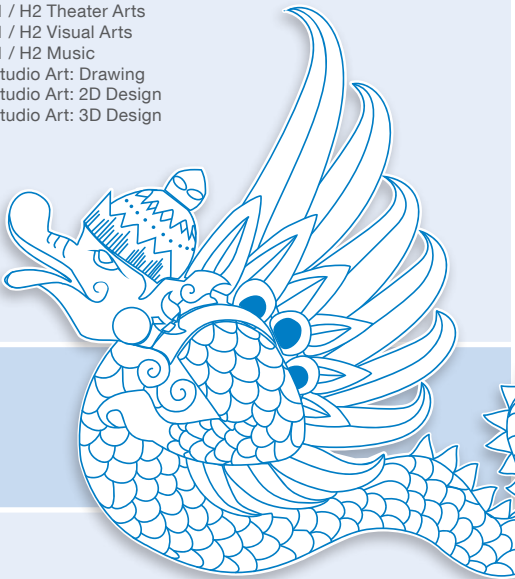
- University College London
- Bournemouth University
- Brunel University London
- City University London
- Hult International Business School
- King's College London (3)
- Liverpool John Moores University
- Queen Mary University of London (4)
- Southampton Solent University
- The London School of Economics and Political Science
- The University of Nottingham (2)
- The University of Warwick (2)
- University of Birmingham
- University of Brighton
- University of Bristol (2)
- University of Cambridge
- University of Exeter
- University of Kent (2)
- University of Leeds
- University of London Goldsmiths
- University of Reading (2)
- University of the Arts London
- Western University

### UNITED STATES

- Agnes Scott College
- American University
- Babson College (6)
- Bates College
- Bentley University (2)
- Berklee College of Music
- Biola University
- Borough of Manhattan Community College (CUNY)
- Boston College (2)
- Boston University (5)
- Brown University (3)
- California Polytechnic State University
- California State University, Northridge
- California State University, East Bay
- Carleton College (2)
- Carnegie Mellon University (2)
- Case Western Reserve University (2)
- Chapman University
- College of William and Mary
- Colorado State University
- Columbia University
- Concordia College - MN
- Concordia University - OR
- Cornell University (5)
- Dallas Baptist University
- Davidson College
- DePaul University
- Diablo Valley College
- Dickinson College
- Elon University
- Embry-Riddle Aeronautical University
- Emory University (2)
- Georgetown University (2)
- Glendale Community College
- Haverford College
- Hope College
- Howard University
- Indiana University at Bloomington
- Johns Hopkins University
- Kansas State University
- Kendall College
- Knox College
- Lehigh University
- Liberty University
- Louisiana State University
- Loyola Marymount University (7)
- Marymount California University
- Michigan State University
- Montana State University
- National Park Community College
- New York University (9)
- Northeastern University (7)
- Northern Virginia Community College (2)
- Northwestern University (5)
- Norwich University
- Old Dominion University
- Pace University, New York City (2)
- Pennsylvania State University (4)
- Pepperdine University (5)
- Pitzer College
- Pratt Institute (2)
- Princeton University
- Reed College
- Rensselaer Polytechnic Institute
- Rice University (2)
- Rider University
- Rochester Institute of Technology
- Rutgers University
- Santa Clara University
- Savannah College of Art and Design
- School of Visual Arts
- Southern Methodist University
- St. Lawrence University
- Stanford University
- Stony Brook University
- Syracuse University
- Texas A&M University
- The College of Wooster
- The George Washington University (2)
- The New School
- The University of Akron
- The University of Arizona
- Tufts University (3)
- University of Bridgeport
- University of California, Berkeley (2)
- University of California, Davis
- University of California, Los Angeles (5)
- University of California, San Diego
- University of California, Santa Cruz
- University of Chicago (2)
- University of Illinois at Urbana-Champaign (8)
- University of Louisiana
- University of Maryland, College Park
- University of Massachusetts
- University of Michigan (2)
- University of Oregon
- University of Pennsylvania (2)
- University of Southern California (6)
- University of Virginia (2)
- University of Washington (3)
- University of Wisconsin, Madison (5)
- Vassar College (2)
- Virginia Tech (2)
- Washington University in St. Louis
- Webster University, St. Louis
- Whitman College
- Worcester Polytechnic Institute

Based on student reported data

## Course List 2016 - 2017

Subject	JIS Courses		IB / AP Courses	
<b>English</b> 4 credits required	<ul style="list-style-type: none"> <li>English 9</li> <li>English 10</li> <li>English 10G (Gothic &amp; Science Fiction, Comedy &amp; Dystopian)</li> </ul>	<ul style="list-style-type: none"> <li>English 11</li> <li>English 12</li> </ul>	<ul style="list-style-type: none"> <li>AP Language &amp; Composition</li> <li>AP Literature &amp; Composition</li> <li>IB H1 / H2 English A Language &amp; Literature</li> <li>IB H1 / H2 English A Literature</li> </ul>	<ul style="list-style-type: none"> <li>IB H1 / H2 English B</li> <li>IB S1 / S2 English A Literature</li> <li>IB S1 / S2 English A Language &amp; Literature</li> </ul>
<b>Mathematics</b> 2 credits required	<ul style="list-style-type: none"> <li>Honors Mathematics 1 &amp; 2</li> <li>Mathematics 1 - 4</li> </ul>	<ul style="list-style-type: none"> <li>Mathematics Foundations 1 &amp; 2</li> <li>Pre-Calculus</li> </ul>	<ul style="list-style-type: none"> <li>AP Calculus AB</li> <li>AP Calculus BC</li> <li>AP Statistics</li> </ul>	<ul style="list-style-type: none"> <li>IB H1 / H2 Mathematics</li> <li>IB S1 / S2 Mathematical Studies</li> <li>IB S1 / S2 Mathematics</li> </ul>
<b>Science</b> 2 credits required	<ul style="list-style-type: none"> <li>Biology A</li> <li>Biology 10</li> <li>Chemistry A</li> <li>Chemistry 10</li> <li>Computer Science A</li> <li>Computer Science 10</li> <li>Environmental Science A</li> <li>Environmental Science 10</li> </ul>	<ul style="list-style-type: none"> <li>Forensic Science A</li> <li>Forensic Science B</li> <li>Physical &amp; Life Sciences</li> <li>Physical &amp; Life Sciences Foundations</li> <li>Physics A</li> <li>Physics 10</li> <li>Pre-AP Chemistry</li> </ul>	<ul style="list-style-type: none"> <li>AP Chemistry</li> <li>AP Computer Science</li> <li>AP Environmental Science</li> <li>AP Physics 1&amp;2</li> <li>IB H1 / H2 Biology</li> <li>IB H1 / H2 Chemistry</li> <li>IB H1 / H2 Computer Science</li> <li>IB H1 / H2 Physics</li> </ul>	<ul style="list-style-type: none"> <li>IB S1 / S2 Biology</li> <li>IB S1 / S2 Chemistry</li> <li>IB S1 / S2 Computer Science</li> <li>IB S1 / S2 Environmental Systems &amp; Societies</li> <li>IB S1 / S2 Physics</li> <li>IB S1 / S2 Sports, Exercise &amp; Health Science</li> </ul>
<b>Social Studies</b> 2 credits required	<ul style="list-style-type: none"> <li>Business in Society</li> <li>Contemporary Issues in Asia</li> <li>Contemporary Issues in Asia LE</li> <li>Cultures and Beliefs 1 &amp; 2</li> </ul>	<ul style="list-style-type: none"> <li>Global Perspectives</li> <li>Global Perspectives LE</li> <li>Business Psychology</li> <li>Theory of Knowledge 1 &amp; 2</li> </ul>	<ul style="list-style-type: none"> <li>AP Macroeconomics</li> <li>AP Microeconomics</li> <li>AP Psychology</li> <li>IB H1 / H2 Business &amp; Management</li> <li>IB H1 / H2 Economics</li> <li>IB H1 / H2 Geography</li> <li>IB H1 / H2 History</li> <li>IB H1 / H2 Psychology</li> </ul>	<ul style="list-style-type: none"> <li>IB H1 / H2 Global Politics</li> <li>IB S1 / S2 Business &amp; Management</li> <li>IB S1 / S2 Economics</li> <li>IB S1 / S2 Geography</li> <li>IB S1 / S2 History</li> <li>IB S1 / S2 Psychology</li> <li>IB S1 / S2 Global Politics</li> </ul>
<b>Modern Languages</b> 1 credit required	<ul style="list-style-type: none"> <li>French 1 - 4</li> <li>Indonesian 1 - 4</li> <li>Indonesian Language, Literature &amp; Civics A1 / A2, B1 / B2</li> <li>Indonesian Language, Literature &amp; Civics 3</li> </ul>	<ul style="list-style-type: none"> <li>Indonesian Studies</li> <li>Japanese 1 &amp; 2</li> <li>Mandarin 1 - 4</li> <li>Spanish 1 - 4</li> <li>Spanish 10</li> </ul>	<ul style="list-style-type: none"> <li>IB H1 / H2 French B</li> <li>IB H1 / H2 Indonesian B</li> <li>IB H1 / H2 Mandarin B</li> <li>IB H1 / H2 Spanish B</li> <li>IB S1 / S2 French B</li> <li>IB H1 Indonesian A Language &amp; Literature</li> <li>IB S1 / S2 Indonesian B</li> </ul>	<ul style="list-style-type: none"> <li>IB S1 / S2 Japanese A</li> <li>IB S1 / S2 Japanese B</li> <li>IB S1 / S2 Korean A</li> <li>IB S1 / S2 Mandarin B</li> <li>IB S1 / S2 Mother Tongue</li> <li>IB S1 / S2 Spanish Ab Initio</li> <li>IB S1 / S2 Spanish B</li> </ul>
<b>Creative Arts</b> 1.5 credits required	<ul style="list-style-type: none"> <li>Advanced Art 2D</li> <li>Advanced Art 10 2D</li> <li>Advanced Art 3D</li> <li>Advanced Art 10 3D</li> <li>Advanced Choir</li> <li>Art of Programming</li> <li>Beginning Band</li> <li>Concert Band</li> <li>Concert Choir</li> <li>Concert Strings</li> <li>Dance 1: Dance Discovery</li> <li>Dance 2: Dance Design</li> <li>Dance 3: Dance Performance</li> <li>Design Communication 1</li> <li>Design Technology 1 &amp; 2</li> <li>Digital Media Production 1 &amp; 2</li> <li>Drawing &amp; Painting 1 &amp; 2</li> </ul>	<ul style="list-style-type: none"> <li>Graphics to Multimedia</li> <li>Joint Sound</li> <li>Sculpture &amp; Metals 1 &amp; 2</li> <li>Music Production</li> <li>Photography &amp; Design 1 &amp; 2</li> <li>Robotics Technology 1 &amp; 2</li> <li>String Sinfonia</li> <li>Theater Technology 1 &amp; 2</li> <li>Theater Workshop: Devising Original Theater</li> <li>Theater Workshop: Ensemble &amp; Truthful Acting</li> <li>Theater Workshop: Improvisation 1 &amp; 2</li> <li>Theater Workshop: Theater Practices &amp; Traditions</li> <li>Wind Ensemble</li> </ul>	<ul style="list-style-type: none"> <li>IB H1 / H2 Dance</li> <li>IB H1 / H2 Film</li> <li>IB H1 / H2 Theater Arts</li> <li>IB H1 / H2 Visual Arts</li> <li>IB H1 / H2 Music</li> <li>AP Studio Art: Drawing</li> <li>AP Studio Art: 2D Design</li> <li>AP Studio Art: 3D Design</li> </ul>	
<b>Physical Education &amp; Health</b> 1.5 credits required	<ul style="list-style-type: none"> <li>Aquatics</li> <li>Fitness for Life</li> <li>Health &amp; Wellness</li> <li>Personal Training &amp; Conditioning 1 &amp; 2</li> <li>Physical Education &amp; Health</li> </ul>	<ul style="list-style-type: none"> <li>Net Sports</li> <li>Team Sports</li> <li>Yoga &amp; Wellness</li> <li>Mixed Martial Arts</li> </ul>		
<b>Additional Courses</b>	<ul style="list-style-type: none"> <li>Broadcast Journalism</li> <li>Journalism</li> <li>Teacher Aide</li> <li>Academic English 9 - 12</li> </ul>	<ul style="list-style-type: none"> <li>English 9 LE</li> <li>English 10 LE</li> <li>Learning Strategies 9 - 12</li> </ul>		

### Global Online Academy

JIS is a founding member of the Global Online Academy, a consortium of the world's leading independent schools. GOA's mission is to translate into online classrooms the intellectually rigorous programs and excellent teaching that are hallmarks of its member schools.

[www.globalonlineacademy.org](http://www.globalonlineacademy.org)

### JIS Global Online Academy Courses

- |   |  |  |  |
|---|--|--|--|
| <ul style="list-style-type: none"> <li>9/11 in a Global Context</li> <li>Abnormal Psychology</li> <li>Advanced Topics in Economics</li> <li>Applying Philosophy to Modern Global Issues</li> <li>Arabic Language through Culture I</li> </ul> | <ul style="list-style-type: none"> <li>Architecture</li> <li>Bioethics</li> <li>Comparative Politics</li> <li>Contest Mathematics</li> <li>Digital Journalism I</li> <li>Energy</li> <li>Entrepreneurship in a Global Context</li> </ul> | <ul style="list-style-type: none"> <li>Fiction Writing</li> <li>Filmmaking</li> <li>Gender Studies</li> <li>iOS App Design</li> <li>Linear Algebra</li> <li>Medical Problem Solving I</li> <li>Music Theory &amp; Digital Composition</li> </ul> | <ul style="list-style-type: none"> <li>Number Theory</li> <li>Poetry Writing</li> <li>Power: Redressing Inequity Through Data</li> <li>Practical Astronomy</li> <li>Water</li> </ul> |
|---|--|--|--|