



## CURRENT HIGH SCHOOL ENROLLMENT

Class of 2018

224



26%

Indonesia

16%

South Korea

14%

United States

9%

India

6%

Australia & New Zealand

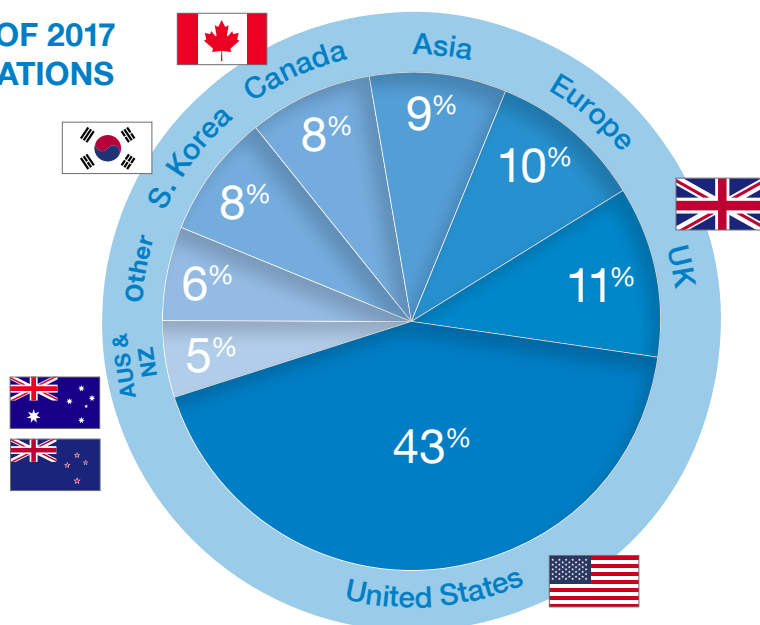
Students from more than 51 nations, including the United Kingdom, Canada, China and the Netherlands

## 2018 UPDATES

Indonesian government regulations mandate all Indonesian students take language, literature and civics courses then national exams in grades 9 and 12

JIS CAS - all students are required to complete Creativity, Activity, and Service activities throughout HS

## CLASS OF 2017 DESTINATIONS



## HIGH SCHOOL FACULTY

103

From 15 Countries

58

Master's Degrees

5

Doctorates

10:1

Student:Teacher Ratio

## ABOUT JIS

- Established in 1952 as an Independent, non-profit, co-educational institution where English is the medium of instruction
- Accredited by Western Association of Schools and Colleges (WASC)
- Membership in Council of International Schools (CIS), East Asia Regional Council of Schools (EARCOS) and National Association of Independent Schools (NAIS)

## CURRICULUM

- U.S. High School Diploma issued upon graduation
- International Baccalaureate Diploma (IB®) and Advanced Placement and Capstone Program (AP®) courses offered
- Academic calendar: 36 weeks (two semesters); from August to June
- Block schedule, five 75-minute class periods per school day

## ACTIVITIES

- 65+ service, sports & fitness, special interest, language, and academic clubs
- National and Tri-M Music Honor Societies
- Participation in IASAS (Interscholastic Association of Southeast Asia Schools) including 11 varsity sports for boys and girls, as well as Performing Arts, Model United Nations, and Debate/Forensics

## ADMINISTRATION

**Tarek Razik**  
Head of School

**Steve Clark**  
High School Principal

**Ryan Campbell**  
Vice Principal for Curriculum & Learning

**Barbara Wiemers**  
Vice Principal for Student Affairs

**Craig Ortnor**  
IB / AP Coordinator

CEEB CODE **672090**  
IB CODE **000104**

P.O. Box 1078 / JKS  
Jakarta 12010  
Indonesia

[www.jisedu.or.id](http://www.jisedu.or.id)

## COUNSELING

Our JIS High School Counseling team believes in a student-centered counseling approach within a strength-based, comprehensive model, which is grounded in best practice.

## HIGH SCHOOL COUNSELORS

**Aleka Bilan**  
[abilan@jisedu.or.id](mailto:abilan@jisedu.or.id)

**Michelle Burlock**  
[mburlock@jisedu.or.id](mailto:mburlock@jisedu.or.id)

**Heather Cook**  
[hecook@jisedu.or.id](mailto:hecook@jisedu.or.id)

**Tony Dickinson**  
[adickinson@jisedu.or.id](mailto:adickinson@jisedu.or.id)

**Joe Tavares**  
[jtavares@jisedu.or.id](mailto:jtavares@jisedu.or.id)

**Andrew Warren**  
[awarren@jisedu.or.id](mailto:awarren@jisedu.or.id)



## International Baccalaureate® Program 2017

IB® Diploma Candidates

**139**

64% of Class of 2017

Global Passing Rate 2016  
**79%**

JIS Passing Rate 2017  
**98%**

Global Average Score 2017  
**30**

JIS Average Score 2017  
**35**

All students enrolled in an IB® or AP® class are required to sit the exam

### 2017 IB® Score Distribution (Number of Students)

Score	7	6	5	4	3	2	1	Total
Group 1 A Language	9	99	63	20	1	0	0	192
Group 2 B Language	24	78	38	7	1	0	0	148
Group 3 Social Science	45	117	78	28	8	0	1	277
Group 4 Science	34	63	61	31	22	4	0	215
Group 5 Mathematics	24	63	38	27	13	1	0	166
Group 6 Art	6	9	5	1	0	0	0	21

## SAT / ACT Results

Class of 2017

### Redesigned SAT Students: 85

	Mean	Middle 50%
Evidence-Based Reading & Writing	620	555 - 680
Math	655	580 - 730
<b>Total</b>	<b>1270</b>	<b>1150 - 1390</b>

### ACT Students: 64

	Mean	Middle 50%
English	27	24 - 30
Math	27.8	25 - 31
Reading	25.3	21 - 29
Science	26.3	23 - 29
<b>Composite</b>	<b>26.8</b>	<b>24 - 29</b>

## Advanced Placement® Exams 2017

Total AP® Exam Takers  
**137**

Total AP® Exams  
**285**

AP® Students with Scores 3+  
**122**

AP® Students with Scores 3+  
**89%**

Group	5	4	3	2	1	Total (by group)
English	4	21	13	11	0	49
Soc. Science	45	25	8	6	5	89
Science	6	20	18	10	3	57
Math	36	18	18	12	0	84
Art	1	4	0	0	0	5

## Grading System

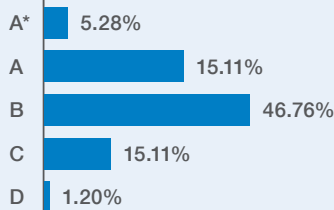
A*	4.3
A	4.0
B	3.0
C	2.0
D	1.0
F	0.0

NG = No Grade  
WP = Withdraw / Pass  
WF = Withdraw / Fail

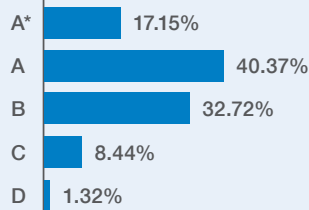
GPA for Class of 2015 and onward is **unweighted**

## Grade Distribution Class of 2016

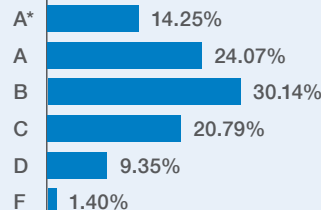
### English



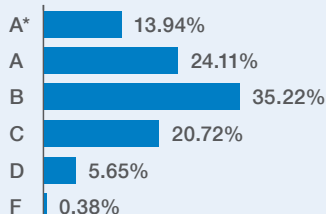
### Modern Language



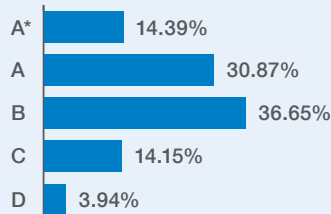
### Math



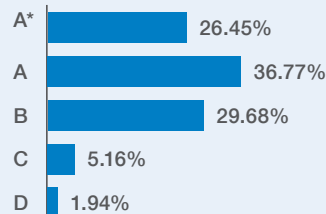
### Science



### Social Studies



### Creative Arts



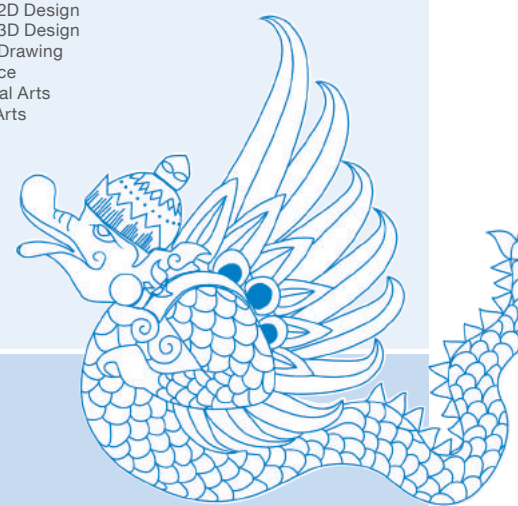
In accordance with our mission and policies, JIS **does not rank** students

Only classes taken at JIS are reported on the transcript and included in GPA calculations

Note:  
Percentile boundaries vary by department

## Course List 2017 - 2018

Subject	JIS Courses	IB / AP Courses
<b>English</b>	<ul style="list-style-type: none"> <li>• English 9</li> <li>• English 10</li> <li>• English 11</li> <li>• English 12</li> <li>• English 9 LE (language enhanced)</li> <li>• English 10 LE (language enhanced)</li> </ul>	<ul style="list-style-type: none"> <li>• English 10 G: Comedy and Dystopia (genre)</li> <li>• English 10 G: Gothic and Science Fiction (genre)</li> <li>• IB H1 / H2 English A Lang &amp; Lit</li> <li>• IB H1 / H2 English A Literature</li> <li>• IB H1 / H2 English B</li> <li>• IB S1 / S2 English A Lang &amp; Lit</li> <li>• IB S1 / S2 English A Literature</li> <li>• IB S1 Mother Tongue A Literature</li> </ul>
<b>Mathematics</b>	<ul style="list-style-type: none"> <li>• Honors Mathematics 1 &amp; 2</li> <li>• Mathematics 1 &amp; 2</li> <li>• Mathematics Foundations 1 &amp; 2</li> <li>• Mathematics in Decision Making</li> <li>• Pre-Calculus</li> </ul>	<ul style="list-style-type: none"> <li>• AP Calculus AB</li> <li>• AP Calculus BC</li> <li>• AP Statistics</li> <li>• IB H1 / H2 Mathematics</li> <li>• IB S1 / S2 Mathematics</li> <li>• IB S1 / S2 Mathematical Studies</li> </ul>
<b>Science</b>	<ul style="list-style-type: none"> <li>• Biology 10</li> <li>• Biology A</li> <li>• Chemistry 10</li> <li>• Chemistry A</li> <li>• Computer Science 10</li> <li>• Computer Science A</li> <li>• Environmental Science 10</li> <li>• Environmental Science A</li> <li>• Environmental Science (11 - 12)</li> <li>• Physical and Life Sciences</li> <li>• Physics 10</li> <li>• Physics A</li> <li>• Pre-AP Chemistry</li> </ul>	<ul style="list-style-type: none"> <li>• AP Chemistry</li> <li>• AP Computer Science</li> <li>• AP Physics 1 &amp; 2</li> <li>• IB H1 / H2 Biology</li> <li>• IB H1 / H2 Chemistry</li> <li>• IB H1 / H2 Computer Science</li> <li>• IB H1 / H2 Physics</li> <li>• IB S1 / S2 Biology</li> <li>• IB S1 / S2 Chemistry</li> <li>• IB S1 / S2 Computer Science</li> <li>• IB S1 / S2 Enviro Systems and Societies</li> <li>• IB S1 / S2 Physics</li> <li>• IB S1 / S2 Sports, Exercise and Health Science</li> </ul>
<b>Social Studies</b>	<ul style="list-style-type: none"> <li>• Business Psychology</li> <li>• Contemporary Issues in Asia</li> <li>• Contemporary Issues in Asia LE (language enhanced)</li> <li>• Global Perspectives</li> <li>• Global Perspectives LE (language enhanced)</li> <li>• Project Based Learning for Social Good</li> <li>• Social Entrepreneurship</li> </ul>	<ul style="list-style-type: none"> <li>• AP Literature and Composition</li> <li>• AP Macroeconomics</li> <li>• AP Microeconomics</li> <li>• AP Psychology</li> <li>• AP US History</li> <li>• IB H1 / H2 Business Management</li> <li>• IB H1 / H2 Economics</li> <li>• IB H1 / H2 Film</li> <li>• IB H1 / H2 Global Politics</li> <li>• IB H1 / H2 History</li> <li>• IB H1 / H2 Psychology</li> <li>• IB H2 Geography</li> <li>• IB S1 / S2 Business Management</li> <li>• IB S1 / S2 Economics</li> <li>• IB S1 / S2 Global Politics</li> <li>• IB S1 / S2 History</li> <li>• IB S1 / S2 Psychology</li> <li>• IB S2 Geography</li> </ul>
<b>Modern Languages</b>	<ul style="list-style-type: none"> <li>• French 1 - 4</li> <li>• French A1</li> <li>• Indonesian 1 - 4</li> <li>• Indonesian Civics</li> <li>• Indonesian Civics 12</li> <li>• Indonesian Lang, Lit and Civics A1 &amp; A2</li> <li>• Indonesian Lang, Lit and Civics B1 &amp; B2</li> <li>• Indonesian Lang, Lit and Civics 3 &amp; 4</li> <li>• Indonesian Studies</li> <li>• Indonesian Studies 11 / 12</li> <li>• Japanese 1 - 4</li> <li>• Mandarin 1 - 4</li> <li>• Spanish 1 - 4</li> <li>• Spanish 10</li> <li>• Spanish A1</li> </ul>	<ul style="list-style-type: none"> <li>• IB H1 / H2 French B</li> <li>• IB H1 / H2 Indonesian A Language and Literature</li> <li>• IB H1 / H2 Indonesian B</li> <li>• IB H1 / H2 Japanese A Literature</li> <li>• IB H1 / H2 Mandarin B</li> <li>• IB H1 / H2 Spanish B</li> <li>• IB S1 / S2 French B</li> <li>• IB S1 / S2 Indonesian A Language and Literature</li> <li>• IB S1 / S2 Indonesian B</li> <li>• IB S1 / S2 Japanese B</li> <li>• IB S1 / S2 Korean A Literature</li> <li>• IB S1 / S2 Mandarin B</li> <li>• IB S1 / S2 Spanish ab initio</li> <li>• IB S1 / S2 Spanish B</li> <li>• IB S2 Japanese A Literature</li> <li>• IB S2 Mother Tongue A Literature</li> </ul>
<b>Creative Arts</b>	<ul style="list-style-type: none"> <li>• Advanced Art 10 2D</li> <li>• Advanced Art 2D</li> <li>• Advanced Choir</li> <li>• Advanced Topics in Robotics</li> <li>• Beginning Strings</li> <li>• Concert Band</li> <li>• Concert Strings</li> <li>• Dance 1 Discovery</li> <li>• Dance 2 Design</li> <li>• Dance 3 Performance</li> <li>• Design Communication 1</li> <li>• Design Technology 1 &amp; 2</li> <li>• Digital Film Production 1 &amp; 2</li> <li>• Drawing and Painting 1 &amp; 2</li> <li>• Female Choir</li> <li>• Graphics to Multimedia</li> <li>• Joint Sound</li> <li>• Journalism</li> <li>• Male Choir</li> <li>• Music Production</li> <li>• Music Theory</li> <li>• Photography and Design 1 &amp; 2</li> <li>• Robotics Technology 1 &amp; 2</li> <li>• Sculpture and Metals 1 &amp; 2</li> <li>• String Sinfonia</li> <li>• Theatre Tech 1 &amp; 2</li> <li>• Theatre Workshop: Intro to Theatre</li> <li>• Theatre Workshop: Acting Styles</li> <li>• Theatre Workshop: Devising Original Theatre</li> <li>• Wind Ensemble</li> </ul>	<ul style="list-style-type: none"> <li>• AP Studio Art: 2D Design</li> <li>• AP Studio Art: 3D Design</li> <li>• AP Studio Art: Drawing</li> <li>• IB H1 / H2 Dance</li> <li>• IB H1 / H2 Visual Arts</li> <li>• IB H2 Theatre Arts</li> <li>• IB S1 Dance</li> </ul>
<b>Physical Education &amp; Health</b>	<ul style="list-style-type: none"> <li>• Aquatics</li> <li>• Fitness for Life</li> <li>• Fitness Jam</li> <li>• Health and Wellness</li> <li>• Independent Living</li> <li>• Net Sports</li> <li>• PE and Health</li> <li>• Personal Training and Conditioning 1 &amp; 2</li> <li>• Power Fit</li> <li>• Self Defense &amp; Mixed Martial Arts</li> <li>• Team Sports</li> <li>• Yoga and Wellness</li> </ul>	
<b>Additional Courses</b>	<ul style="list-style-type: none"> <li>• Academic English 9 - 12</li> <li>• Learning Strategies 9 - 12</li> <li>• Teacher Aide</li> </ul>	<ul style="list-style-type: none"> <li>• AP Seminar</li> <li>• IB Theory of Knowledge 1 &amp; 2</li> </ul>



### Global Online Academy

JIS is a founding member of the Global Online Academy, a consortium of the world's leading independent schools. GOA's mission is to translate into online classrooms the intellectually rigorous programs and excellent teaching that are hallmarks of its member schools.

[www.globalonlineacademy.org](http://www.globalonlineacademy.org)

### JIS Global Online Academy Courses

- |   |  |
|---|--|
| <ul style="list-style-type: none"> <li>• Architecture</li> <li>• Computer Science I: Computational Thinking</li> <li>• Computer Science II: Game Design and Development</li> <li>• Game Theory</li> </ul> | <ul style="list-style-type: none"> <li>• Genocide &amp; Human Rights</li> <li>• Graphic Design Introduction to Investments</li> <li>• Medical Problem Solving I</li> <li>• Music Theory and Digital Composition</li> </ul> |
|---|--|

## Class of 2016 & 2017 University Matriculations (Total Students)

JIS students are limited to ten (10) applications globally. An application from a JIS student is a well-considered one.

 <b>ARGENTINA</b> <ul style="list-style-type: none"> <li>Universidad Torcuato Di Tella</li> </ul>	 <b>PHILIPPINES</b> <ul style="list-style-type: none"> <li>Ateneo de Manila University (3)</li> </ul>	<ul style="list-style-type: none"> <li>Chapman University (2)</li> <li>Claremont McKenna College</li> <li>Colorado State University</li> <li>Columbia University</li> <li>Concordia University - Portland</li> <li>Cornell University (8)</li> <li>Davidson College (2)</li> <li>DePaul University</li> <li>Embry-Riddle Aeronautical University</li> <li>Emory University</li> <li>Fordham University</li> <li>Georgetown University</li> <li>Glendale Community College</li> <li>Haverford College</li> <li>Hope College</li> <li>Indiana University at Bloomington (2)</li> <li>Johns Hopkins University</li> <li>Knox College</li> <li>Lehigh University</li> <li>Loyola Marymount University (10)</li> <li>Marymount California University</li> <li>New College of Florida</li> <li>New York University (6)</li> <li>Northeastern University (7)</li> <li>Northern Virginia Community College</li> <li>Northwestern University (3)</li> <li>Old Dominion University</li> <li>Pace University, New York City</li> <li>Pennsylvania State University</li> <li>Pepperdine University (4)</li> <li>Pitzer College</li> <li>Pomona College</li> <li>Pratt Institute (2)</li> <li>Radford University</li> <li>Reed College (2)</li> <li>Rice University</li> <li>Rider University</li> <li>Rochester Institute of Technology</li> <li>Rutgers University</li> <li>Rutgers University (2)</li> <li>San Diego State University</li> <li>Santa Monica College</li> <li>Sarah Lawrence College</li> <li>School of Visual Arts</li> <li>Scripps College</li> <li>Southern Methodist University</li> <li>South Louisiana Community College</li> <li>St. Lawrence University</li> <li>Stanford University</li> <li>Stony Brook University</li> <li>Suffolk University</li> <li>Syracuse University (2)</li> <li>Texas A&amp;M University (2)</li> <li>Texas Tech University</li> <li>The College of Wooster</li> <li>The New School - All Divisions (2)</li> <li>The University of Akron</li> <li>The University of Texas, Austin</li> <li>Tufts University (3)</li> <li>University of California, Berkeley (6)</li> <li>University of California, Davis</li> <li>University of California, Los Angeles (8)</li> <li>University of California, San Diego</li> <li>University of California, Santa Barbara</li> <li>University of California, Santa Cruz</li> <li>University of Chicago</li> <li>University of Chicago (2)</li> <li>University of Illinois at Urbana-Champaign (9)</li> <li>University of Maryland, College Park (2)</li> <li>University of Michigan (6)</li> <li>University of Oregon (2)</li> <li>University of Pennsylvania (2)</li> <li>University of Rochester</li> <li>University of San Diego</li> <li>University of San Francisco (2)</li> <li>University of Southern California (9)</li> <li>University of Virginia (2)</li> <li>University of Washington (2)</li> <li>University of Wisconsin, Madison (4)</li> <li>Wesleyan University</li> <li>Williams College</li> <li>Worcester Polytechnic Institute</li> </ul>
 <b>AUSTRALIA</b> <ul style="list-style-type: none"> <li>Australian National University</li> <li>University of Canberra</li> <li>University of New South Wales</li> </ul>	 <b>SINGAPORE</b> <ul style="list-style-type: none"> <li>LASALLE College of the Arts</li> <li>Nanyang Technological University (2)</li> <li>Singapore University of Social Sciences</li> <li>Yale-NUS College (3)</li> </ul>	
 <b>AUSTRIA</b> <ul style="list-style-type: none"> <li>MCI Management Center Innsbruck</li> </ul>	 <b>SOUTH AFRICA</b> <ul style="list-style-type: none"> <li>SAE Institute Cape Town</li> </ul>	
 <b>CANADA</b> <ul style="list-style-type: none"> <li>Emily Carr University of Art + Design</li> <li>Lakehead University</li> <li>Langara College</li> <li>McGill University (4)</li> <li>McMaster University</li> <li>Memorial University of Newfoundland</li> <li>Simon Fraser University (2)</li> <li>University of Alberta</li> <li>University of British Columbia (12)</li> <li>University of Toronto (9)</li> <li>University of Victoria (2)</li> <li>University of Waterloo (2)</li> <li>Vancouver Island University</li> <li>York University</li> </ul>	 <b>SOUTH KOREA</b> <ul style="list-style-type: none"> <li>Ewha Womans University</li> <li>KAIST - Korea Advanced Institute of Science &amp; Technology</li> <li>Korea University (3)</li> <li>Seoul National University (5)</li> <li>Sogang University</li> <li>Yonsei University (6)</li> </ul>	
 <b>SPAIN</b> <ul style="list-style-type: none"> <li>IE University - Segovia</li> <li>Universidad de Navarra</li> </ul>	 <b>SWEDEN</b> <ul style="list-style-type: none"> <li>Stockholm University</li> </ul>	
 <b>EGYPT</b> <ul style="list-style-type: none"> <li>The American University in Cairo</li> </ul>	 <b>SWITZERLAND</b> <ul style="list-style-type: none"> <li>Ecole Hoteliere de Lausanne</li> </ul>	
 <b>FRANCE</b> <ul style="list-style-type: none"> <li>IESEG School of Management</li> </ul>	 <b>UNITED KINGDOM</b> <ul style="list-style-type: none"> <li>Bournemouth University</li> <li>Brunel University London</li> <li>City University of London</li> <li>Goldsmiths, University of London</li> <li>Hult International Business School - London (3)</li> <li>King's College London (2)</li> <li>Loughborough University</li> <li>Middlesex University</li> <li>Newcastle University</li> <li>Queen Mary University of London (2)</li> <li>Southampton Solent University</li> <li>The University of Edinburgh (2)</li> <li>The University of Nottingham (3)</li> <li>The University of Sheffield</li> <li>The University of Warwick (3)</li> <li>University College London (3)</li> <li>University of Bath</li> <li>University of Brighton</li> <li>University of Cambridge</li> <li>University of Exeter</li> <li>University of Kent</li> <li>University of Leeds</li> <li>University of Reading</li> <li>University of the Arts London</li> <li>University of Westminster (2)</li> <li>University of York</li> </ul>	
 <b>GERMANY</b> <ul style="list-style-type: none"> <li>Freie Universitat Berlin</li> <li>Jacobs University</li> </ul>		
 <b>HONG KONG</b> <ul style="list-style-type: none"> <li>Hong Kong Polytechnic University</li> <li>Hong Kong University of Science and Technology (2)</li> <li>University of Hong Kong (3)</li> </ul>		
 <b>HUNGARY</b> <ul style="list-style-type: none"> <li>University of Veterinary Medicine, Budapest</li> </ul>		
 <b>INDIA</b> <ul style="list-style-type: none"> <li>Christ University</li> <li>Symbiosis Centre for Media and Communication</li> </ul>		
 <b>INDONESIA</b> <ul style="list-style-type: none"> <li>Binus University International (2)</li> <li>Institute of Technology at Bandung</li> <li>Sampoerna University</li> <li>Universitas Trisakti</li> <li>University of Indonesia</li> </ul>		
 <b>ITALY</b> <ul style="list-style-type: none"> <li>Universita Bocconi</li> </ul>	 <b>UNITED STATES</b> <ul style="list-style-type: none"> <li>Agnes Scott College</li> <li>American University (2)</li> <li>Arizona State University</li> <li>Art Center College of Design</li> <li>Babson College (8)</li> <li>Ball State University</li> <li>Barnard College</li> <li>Bentley University</li> <li>Binghamton University</li> <li>Biola University</li> <li>Borough of Manhattan Community College of the CUNY</li> <li>Boston College (2)</li> <li>Boston University (5)</li> <li>Bowdoin College</li> <li>Brigham Young University-Hawaii</li> <li>Brown University (3)</li> <li>California College of the Arts</li> <li>California Polytechnic State University</li> <li>California State University</li> <li>Carleton College</li> <li>Case Western Reserve University</li> </ul>	
 <b>JAPAN</b> <ul style="list-style-type: none"> <li>Keio University (2)</li> <li>Ritsumeikan Asia Pacific University</li> <li>University of Maryland University College - Asia</li> <li>Waseda University (2)</li> </ul>		
 <b>MALAYSIA</b> <ul style="list-style-type: none"> <li>The University of Nottingham Malaysia</li> </ul>		
 <b>NETHERLANDS</b> <ul style="list-style-type: none"> <li>Erasmus Universiteit Rotterdam (4)</li> <li>Hogeschool Rotterdam</li> <li>Saxion University</li> <li>Universiteit Leiden (3)</li> <li>Universiteit Maastricht</li> <li>Universiteit van Amsterdam</li> <li>Wageningen Universiteit</li> <li>Webster University, The Netherlands</li> </ul>		

Based on student reported data