



WHITE BEAR LAKE AREA SCHOOLS



REFERENDUM PROJECTS UPDATE

School Board Meeting

October 26, 2020



White Bear Lake
Area Schools



White Bear Lake
Area Schools

REFERENDUM PROJECTS UPDATE

PRESENTATION AGENDA

Referendum Projects Completed:

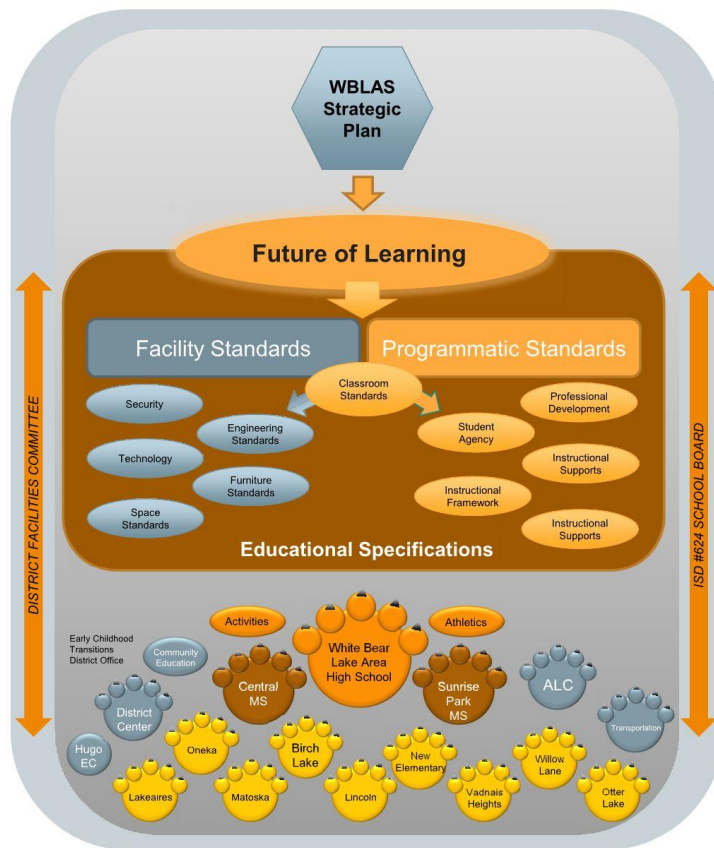
- ALC Security Renovation

Referendum Projects Bid / in Construction:

- Lincoln Elementary School
- Matoska Elementary School
- Vadnais Heights Elementary School
- Willow Lane Elementary School
- New Transportation / Maintenance Facility
- South Campus Gym Addition

Referendum Projects in Design:

- **New Elementary School**
- **White Bear Lake Area High School**
- South Campus Phase II Addition
- Phase I - New Classroom Furniture





WB White Bear Lake
Area Schools



WHITE BEAR LAKE AREA HIGH SCHOOL



White Bear Lake
Area Schools

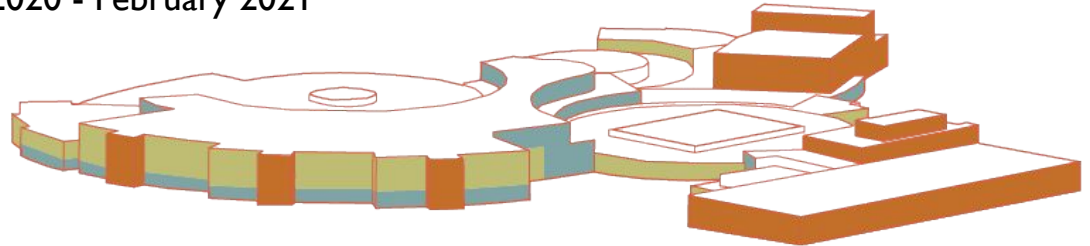
HIGH SCHOOL PROJECT SCOPE & SCHEDULE

Project Scope:

- Additions and renovations to create a comprehensive 9-12 high school
- New furniture
- Upgrades and expansion to kitchen and cafeteria
- 375,000 square foot addition
- \$179M total project cost including building, and on and off site improvements
- \$25M LTFM

Schedule:

- Schematic Design (Core Planning Group): late January 2020 - May 2020
- Design Development (User Groups): June 2020 - February 2021
- Bidding / Construction Starts: Spring 2021
- Opens in phases over the next 4 years





White Bear Lake
Area Schools

HIGH SCHOOL PROJECT COMMITMENTS

- The design will be **future-ready and forward thinking**, and adapt to the changing needs of the community over time.
- The design will honor and embrace all cultures. It will be rooted in the **history of the area while reflecting the present culture** and WBLAS community sensibilities.
- The building will be an **inclusive place** where learners can explore their evolving interests, and develop a sense of community. Learning studios should be organized to create a **“small-school feel”** within the high school.
- The building and programming will **actively support student agency** while providing guidance and support in their educational journey.
- **Special Education spaces should be distributed** to provide inclusion and opportunities for learners.



White Bear Lake
Area Schools

HIGH SCHOOL DESIGN CRITERIA

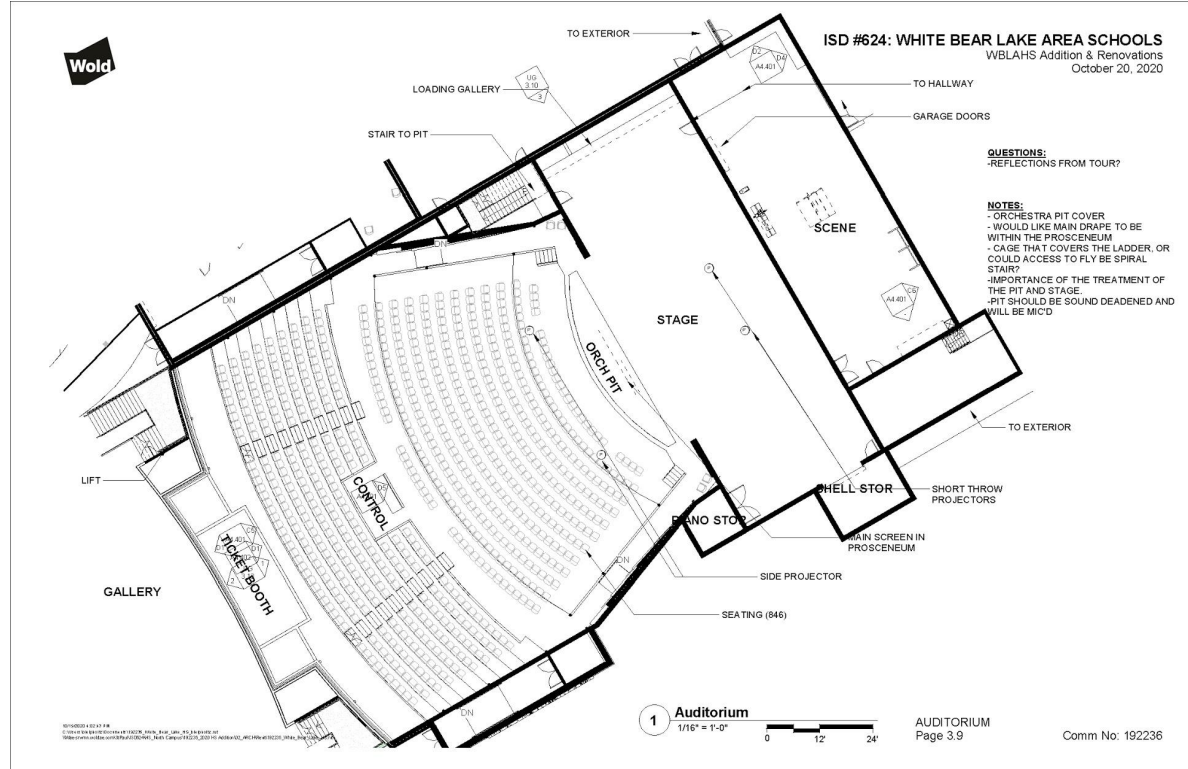
- The building provides **spaces for meaningful collaboration** for staff, learners and the community.
- **The Union serves as the central connecting space** within the building, connecting the main entry, learning studios, fine arts, and athletics areas.
- The Learning Commons should be a space for innovation and technology and a resource for all learners and staff.
- Spaces within the Learning Commons should **allow for collaboration between learners and their peers** (in both small and large groups), as well as with staff and community partners.
- Learning Commons should have a **direct physical and visual connection to the multi-story Student Union** and be a **central element (hub) within the school**.
- The building will have dedicated spaces for staff collaboration, rest, and support. **Staff offices or “home bases” will be distributed** among the learning spaces in proximity to the areas in which they are teaching at the time. Staff offices should be secure and private.
- **Specialty learning spaces** (pathways, science, FACS) should be **easily accessible from all learning studios**.
- Organization of learning studios should support **collaboration around both content and learners**.



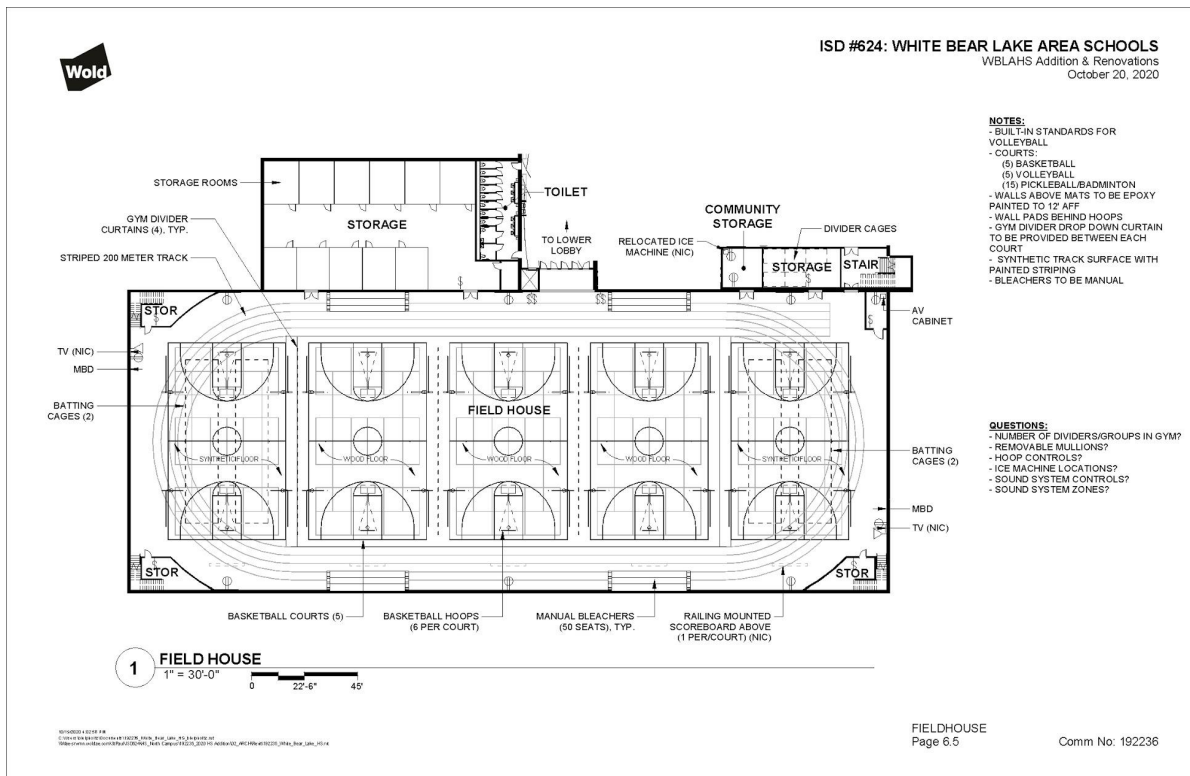


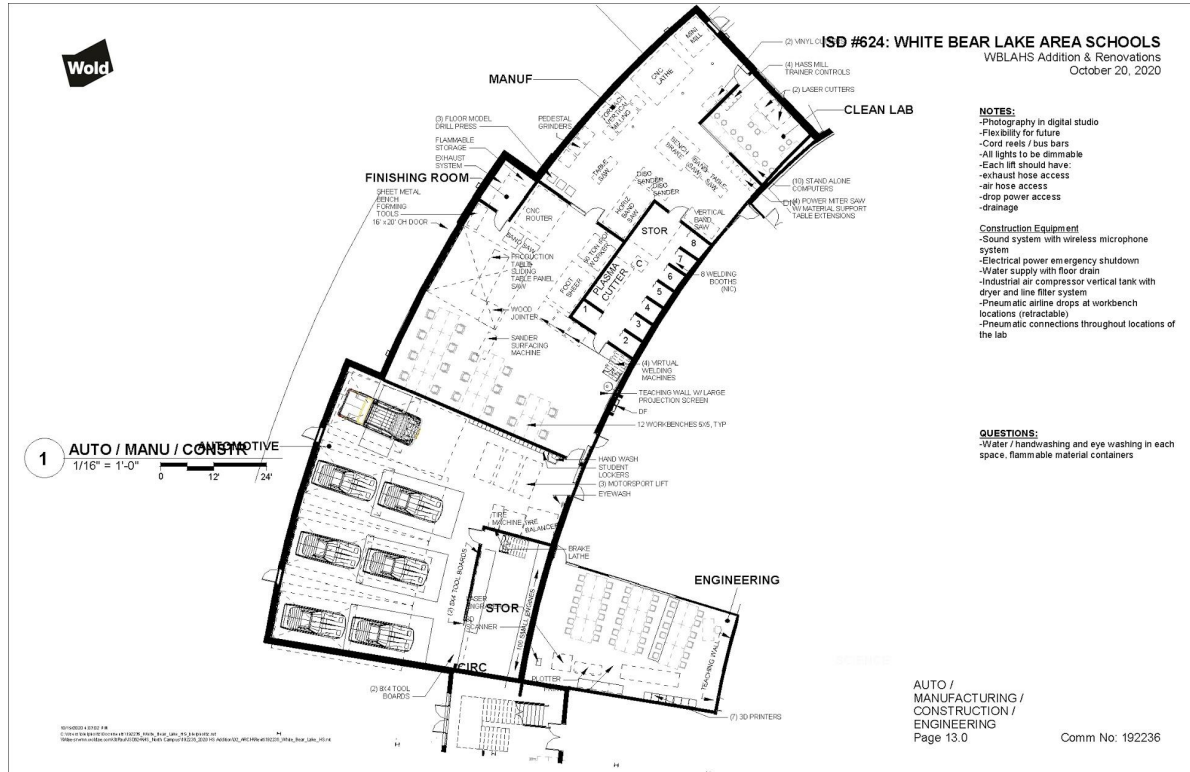
White Bear Lake
Area Schools

HIGH SCHOOL USER GROUPS



Auditorium

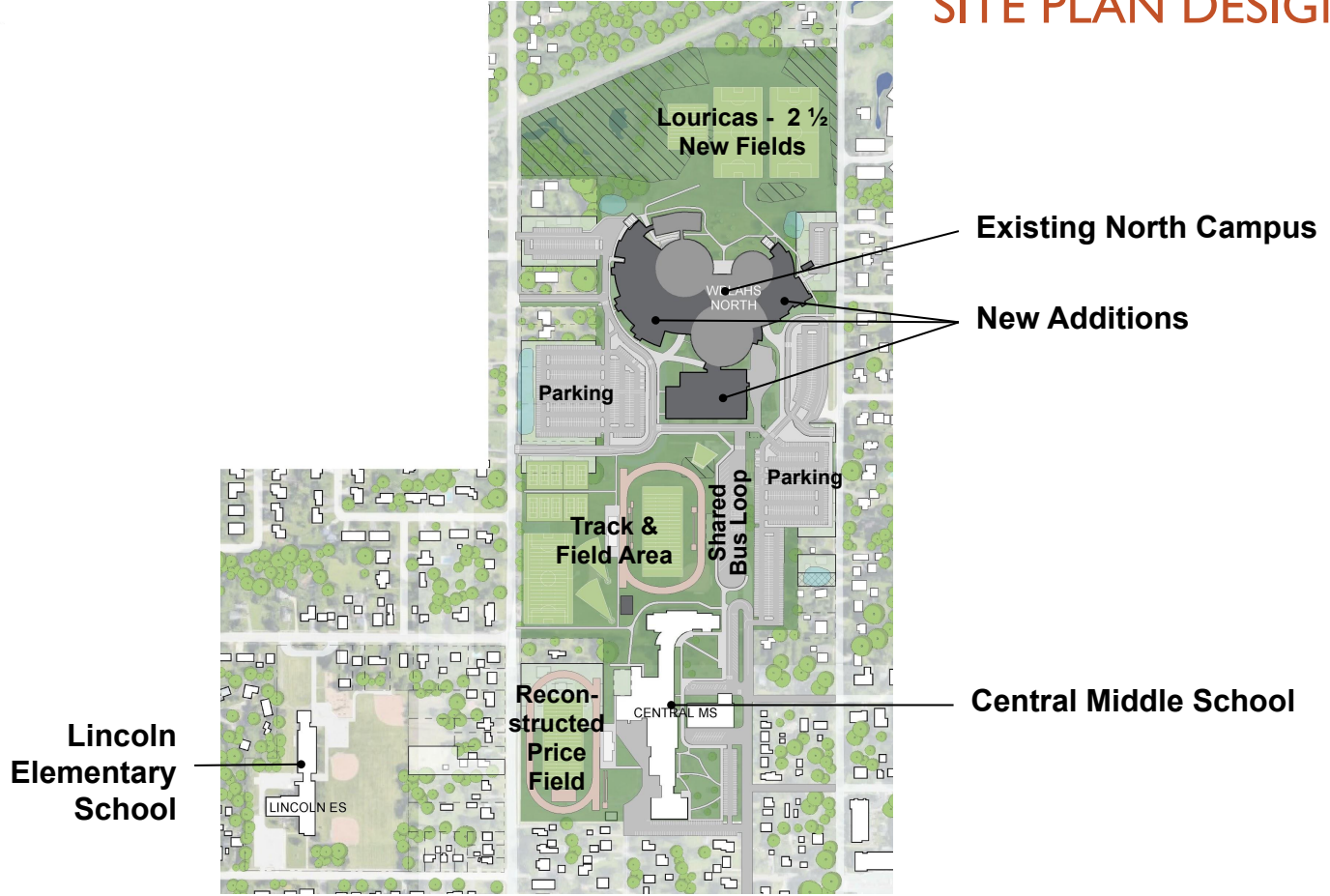






White Bear Lake
Area Schools

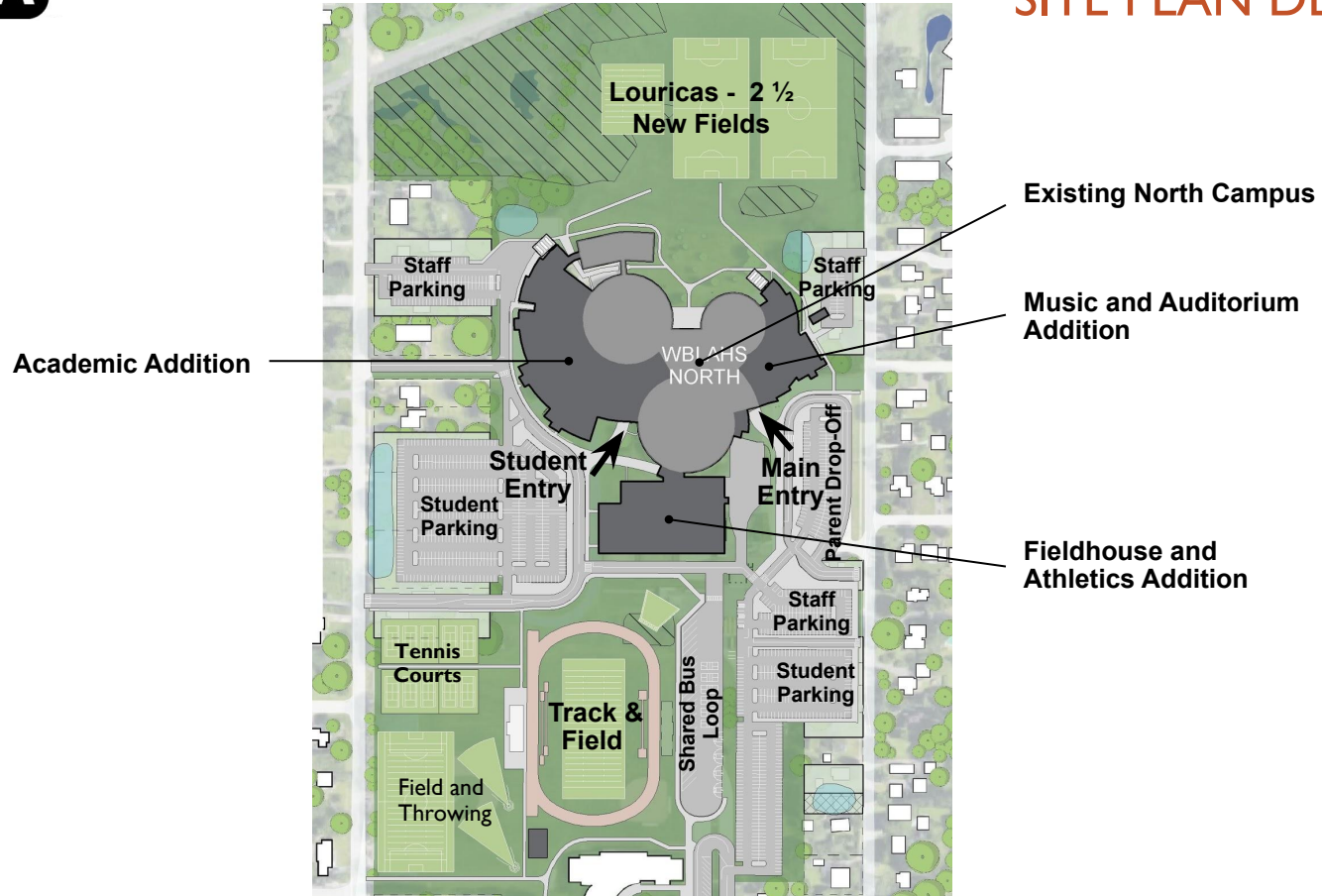
HIGH SCHOOL SITE PLAN DESIGN





White Bear Lake
Area Schools

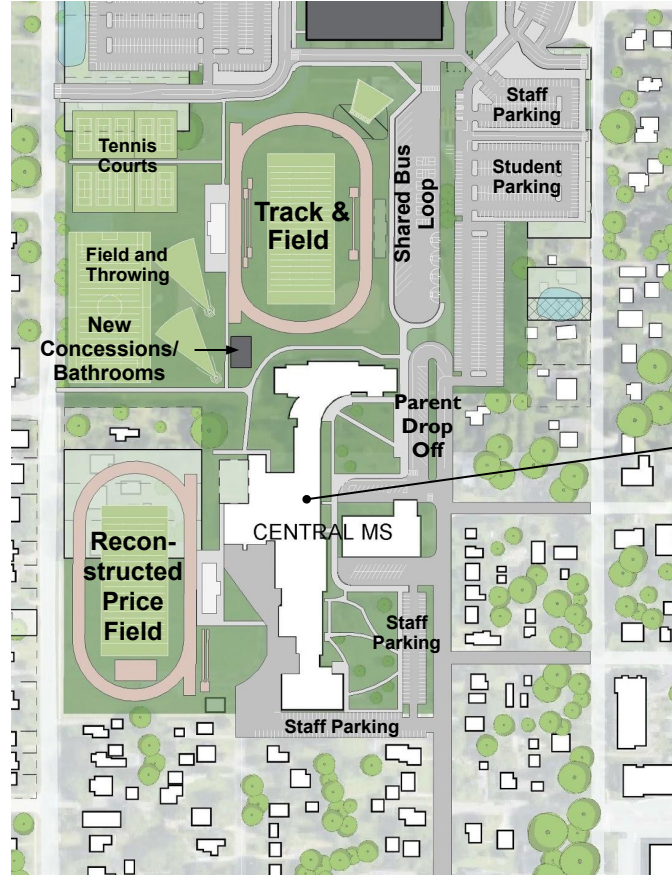
HIGH SCHOOL SITE PLAN DESIGN





White Bear Lake
Area Schools

HIGH SCHOOL SITE PLAN DESIGN



Central Middle School



White Bear Lake
Area Schools



- **Bald Eagle Lake**
- **Oneka Lake**
- **Vadnais Lake**
- **White Bear Lake**
- Amelia Lake
- Birch Lake
- Black Lake
- Egg Lake
- Gem Lake
- Gilfillan Lake
- Goose Lake
- Oak Knoll Pond
- Otter Lake
- Peppertree Ponds
- Priebe Lake
- Rice Lake
- Tamarack Lake
- Twin Lake
- Waterbury Pond
- Willow Lake



White Bear Lake
Area Schools

HIGH SCHOOL DESIGN INSPIRATION





White Bear Lake
Area Schools

HIGH SCHOOL DESIGN INSPIRATION

Lake: Open, expansive, layered views, free movement

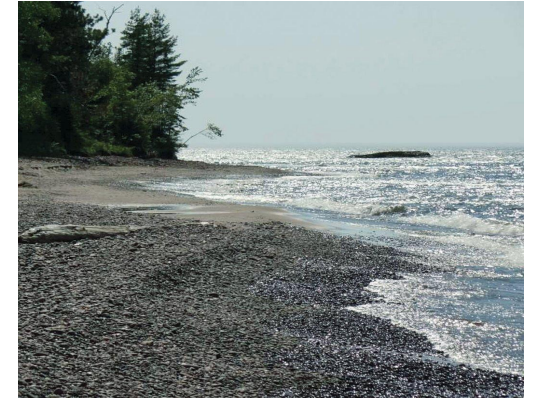




White Bear Lake
Area Schools

HIGH SCHOOL DESIGN INSPIRATION

Shoreline: intentional, welcoming, visible, active, gradual





White Bear Lake
Area Schools

HIGH SCHOOL DESIGN INSPIRATION

Eddy: An area of lower energy caused by a flow of water around objects. connected and part of the larger flow, but provides an area of rest





White Bear Lake
Area Schools

HIGH SCHOOL DESIGN INSPIRATION

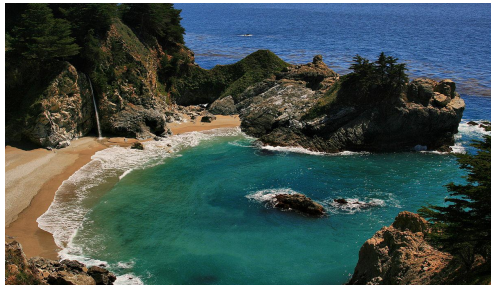


ISLANDS

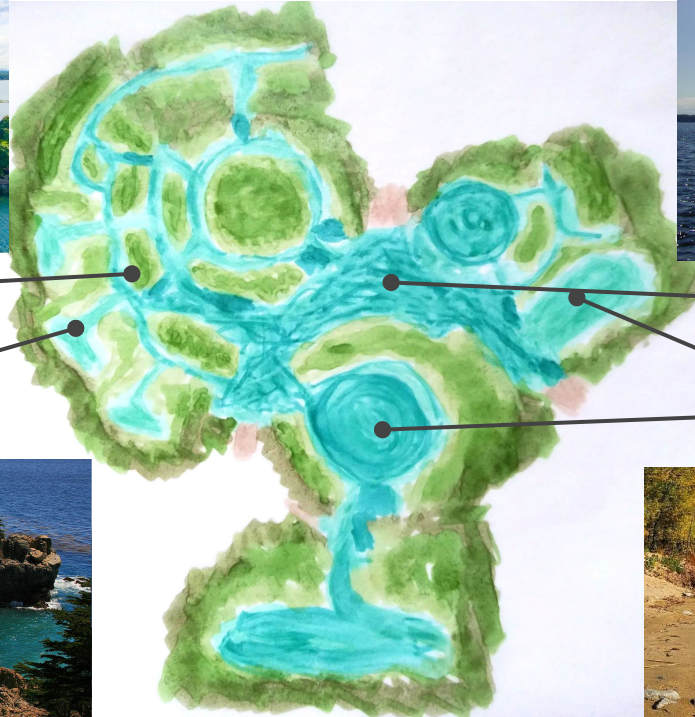


OPEN WATER

COVE



BAY



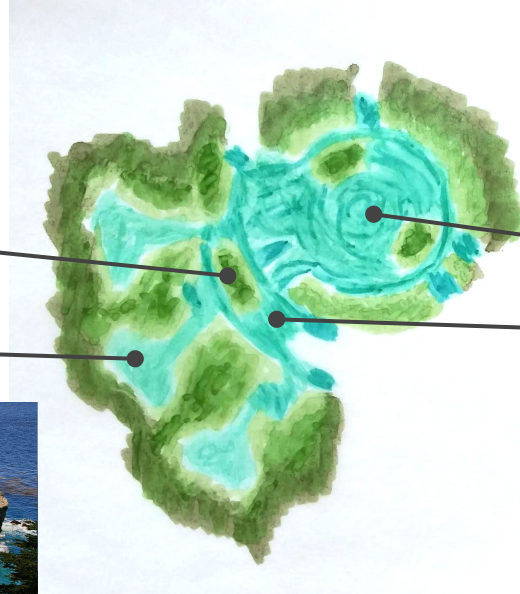


White Bear Lake
Area Schools

HIGH SCHOOL DESIGN INSPIRATION



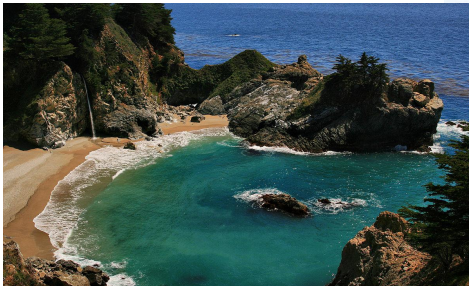
ISLANDS



COVE

BAY

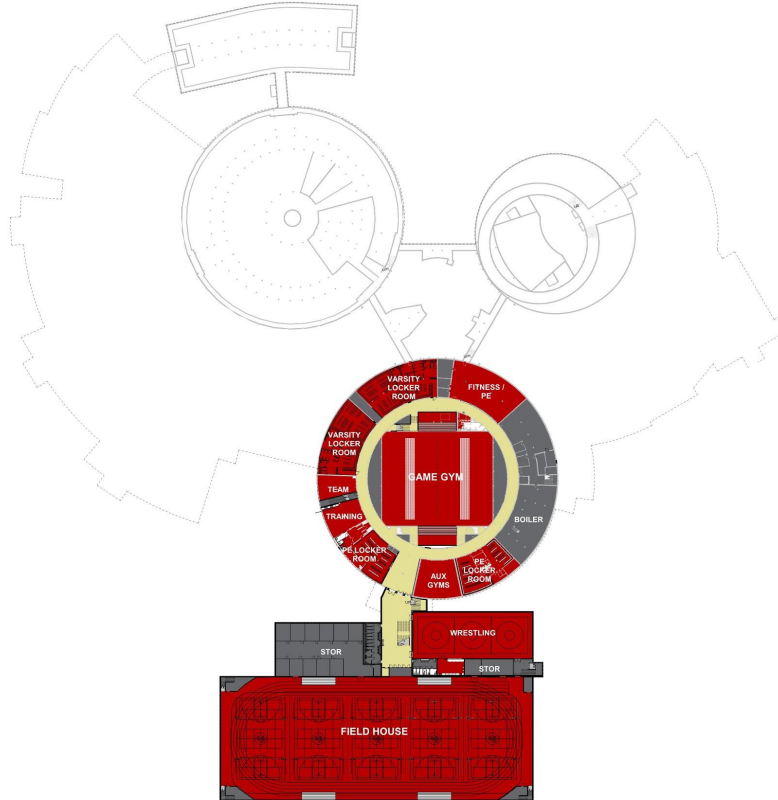
OPEN WATER





White Bear Lake
Area Schools

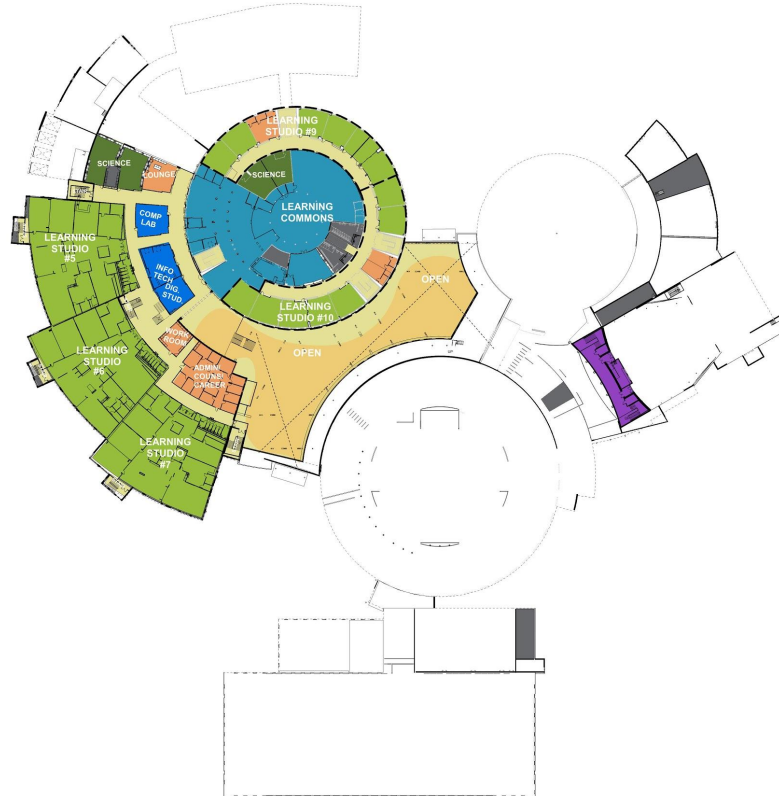
HIGH SCHOOL LOWER LEVEL FLOOR PLAN





White Bear Lake
Area Schools

HIGH SCHOOL SECOND LEVEL FLOOR PLAN





White Bear Lake
Area Schools

HIGH SCHOOL THIRD LEVEL FLOOR PLAN





White Bear Lake
Area Schools

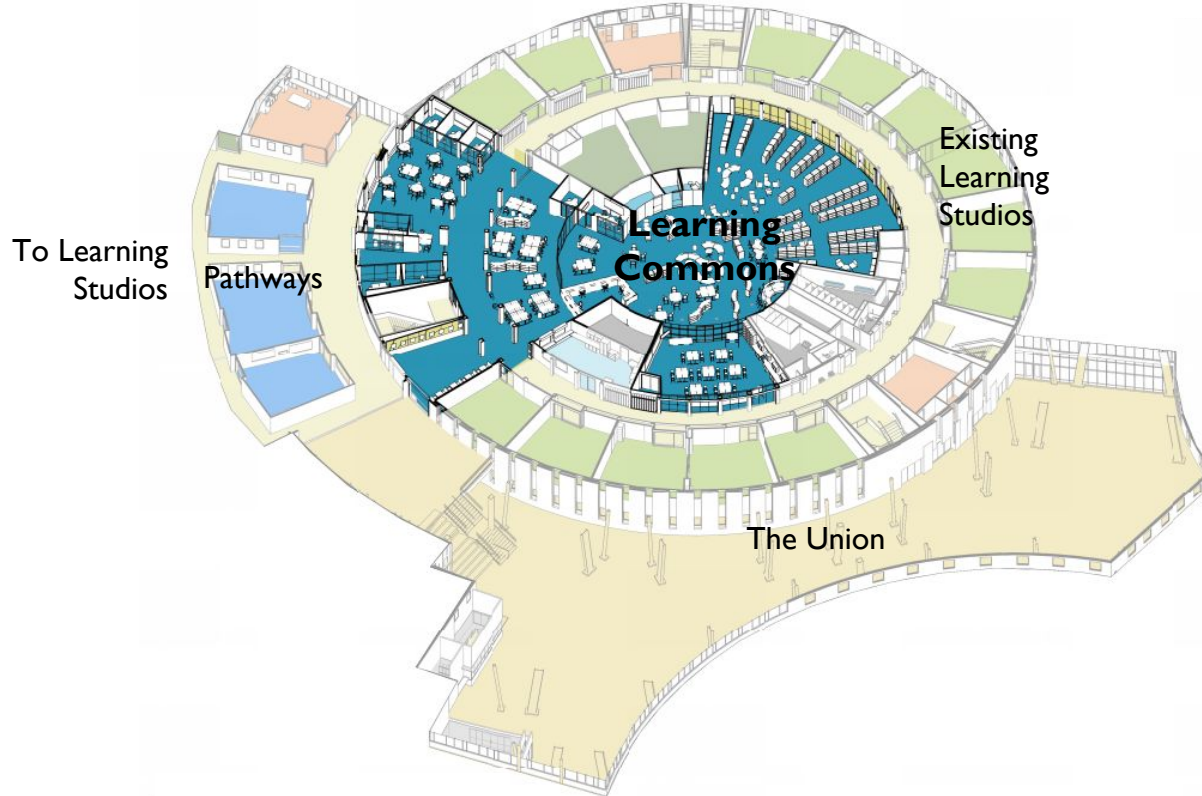
HIGH SCHOOL LEARNING STUDIO DIAGRAM





White Bear Lake
Area Schools

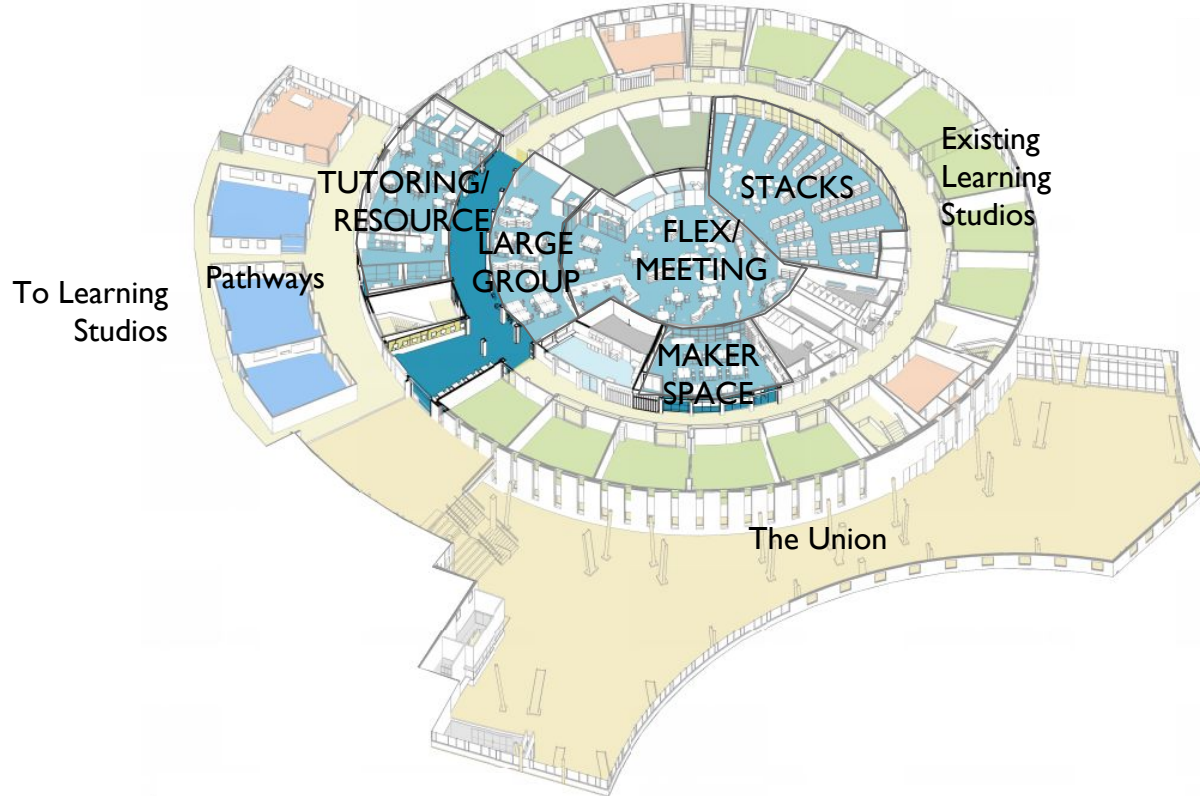
HIGH SCHOOL LEARNING COMMONS DIAGRAM





White Bear Lake
White Bear Lake
Area Schools

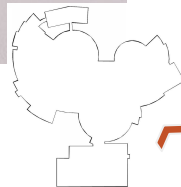
HIGH SCHOOL LEARNING COMMONS DIAGRAM





White Bear Lake
Area Schools

HIGH SCHOOL EXTERIOR VIEW





White Bear Lake
Area Schools

HIGH SCHOOL EXTERIOR VIEW



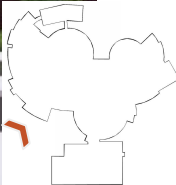
STUDENT ENTRY





White Bear Lake
Area Schools

HIGH SCHOOL EXTERIOR VIEW



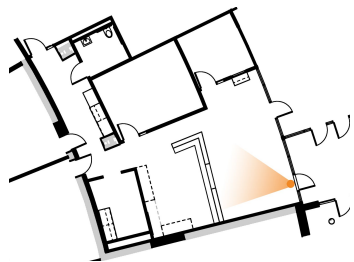


White Bear Lake
Area Schools

HIGH SCHOOL INTERIOR VIEW



MAIN OFFICE



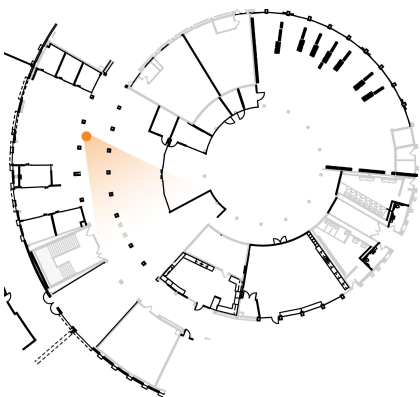


White Bear Lake
Area Schools

HIGH SCHOOL INTERIOR VIEW



LEARNING COMMONS





White Bear Lake
Area Schools

HIGH SCHOOL INTERIOR VIEW



LEARNING STUDIOS



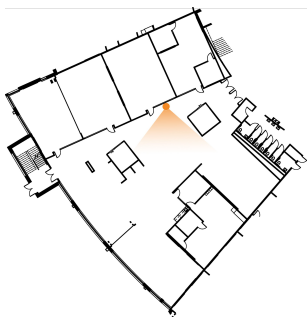


White Bear Lake
Area Schools

HIGH SCHOOL INTERIOR VIEW



LEARNING STUDIO - RESOURCE SPACE





White Bear Lake
Area Schools

HIGH SCHOOL INTERIOR VIEW



LEARNING STUDIO - FLEX CLASSROOMS





White Bear Lake
Area Schools

HIGH SCHOOL INTERIOR VIEW



THE UNION





White Bear Lake
Area Schools



NEW ELEMENTARY SCHOOL IN HUGO, MN



White Bear Lake
Area Schools

NEW ELEMENTARY SCHOOL PROJECT SCOPE & SCHEDULE

Project Scope:

- New elementary to create a comprehensive K-5 school in Hugo, MN
- New furniture
- 101,000 square foot building
- Approximately \$43 million total project cost including building and on and off site improvements

Schedule:

- Schematic Design (Core Planning Group): January 2020 - May 2020
- Design (User Groups): May 2020 - September 2020
- Construction Documents: September 2020 - November 2020
- Bid Opening: December 2020
- Bidding / Construction Starts: Spring 2021
- Open Fall 2022



White Bear Lake
Area Schools

NEW ELEMENTARY SCHOOL PROJECT COMMITMENTS

- The building and site will be welcoming, safe, and accessible for all users.
- The facility should support **collaboration, innovation**, and accommodate the needs of **active learning, interaction**, and **social development**.
- The design should prioritize **natural daylight** and **connections to nature** to enhance the learning environment.
- The building should be energy efficient.
- The look and feel of the building should represent the values and identity and be a source of pride of White Bear Lake Area Schools and Community.
- Spaces should be innovative, **engaging, and inspiring**, while **providing flexibility for multiple uses**.
- Students should feel well represented within the building.
- The building should be accessible for users and the community.
- The design should support and be adaptable for current and future technologies.
- The design should celebrate and **make learning visible** for all to see.
- The building should embrace the multi-generational community.



White Bear Lake
Area Schools

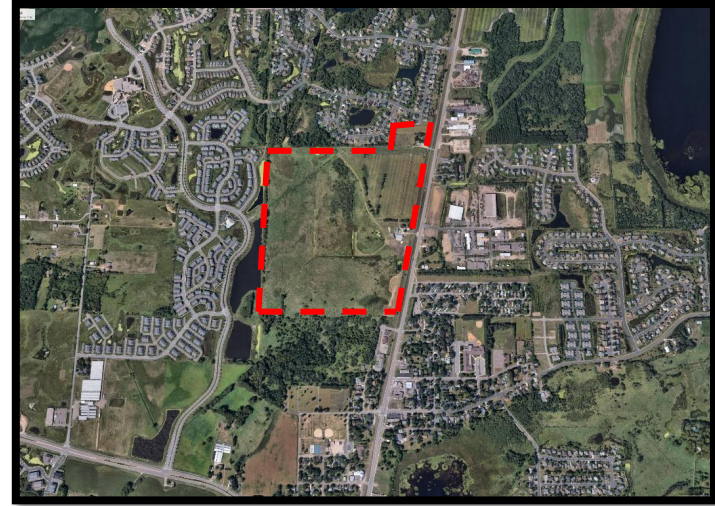
NEW ELEMENTARY SCHOOL DESIGN CRITERIA

- The building will create **professional spaces for staff** work, collaboration, and storage.
- Space for student projects should be provided.
- The Learning Commons (Media Center) should be flexible, engaging, supportive, and relevant to the work students do.
- Learning spaces for specialists and the **Learning Commons should be centrally located** within the building.
- **Privacy toilet rooms** should be incorporated into the facility.
- There should be a space large enough to hold all students, while being flexible for other uses.
- Spaces for sensory / calming rooms should be **distributed within the Learning Studios**.
- **Flexible spaces** that cater to a variety of group sizes and uses should be incorporated.
- Student services should be located in and be easily accessible to each Learning Studios.
- Learning Studios should have **easy access to the exterior** of the building for outdoor learning opportunities.
- The site design should provide adequate space for parent pick-up and stacking area.
- The playground and **outdoor learning spaces** should be separated from Highway 61 and be accessible from both the cafeteria and Learning Communities (mud rooms).
- The health office should be located within the main office as well as centralized and convenient to the gym and cafeteria.



White Bear Lake
Area Schools

NEW ELEMENTARY SCHOOL SITE PLAN DESIGN





White Bear Lake
Area Schools

NEW ELEMENTARY SCHOOL DESIGN INSPIRATION





White Bear Lake
Area Schools

NEW ELEMENTARY SCHOOL DESIGN INSPIRATION

“The best qualities of **urban** and **rural** living come together in the City of Hugo.

Hugo **blends** the comfort and energy of urban life with nature, outdoor recreation and small town community. This makes Hugo a sought after destination for families, professionals, and outdoor enthusiasts to call home.”





White Bear Lake
Area Schools

NEW ELEMENTARY SCHOOL DESIGN INSPIRATION

Blending of urban and rural:

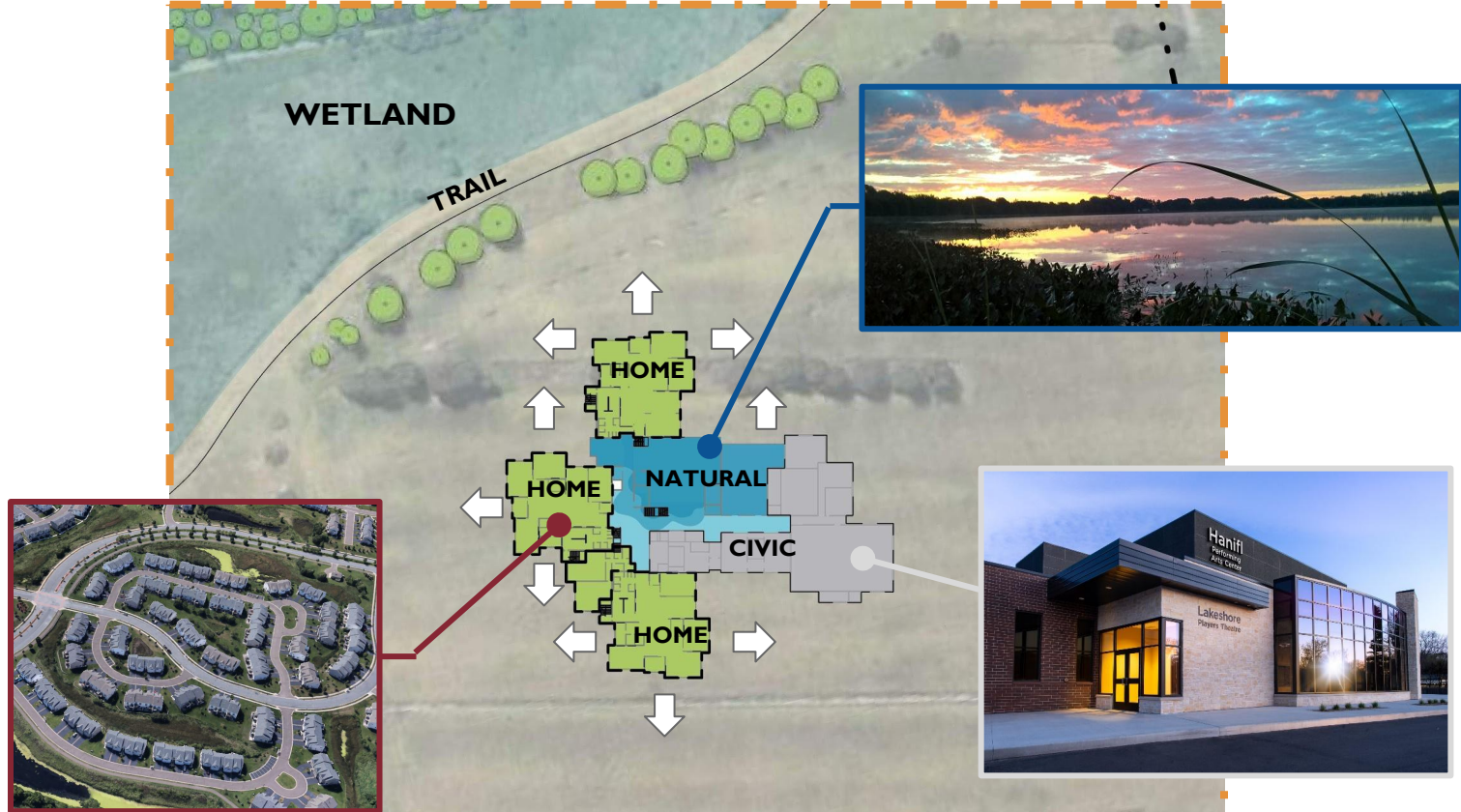
- Civic
- Natural
- Home
- Rural





White Bear Lake
Area Schools

NEW ELEMENTARY SCHOOL DESIGN INSPIRATION

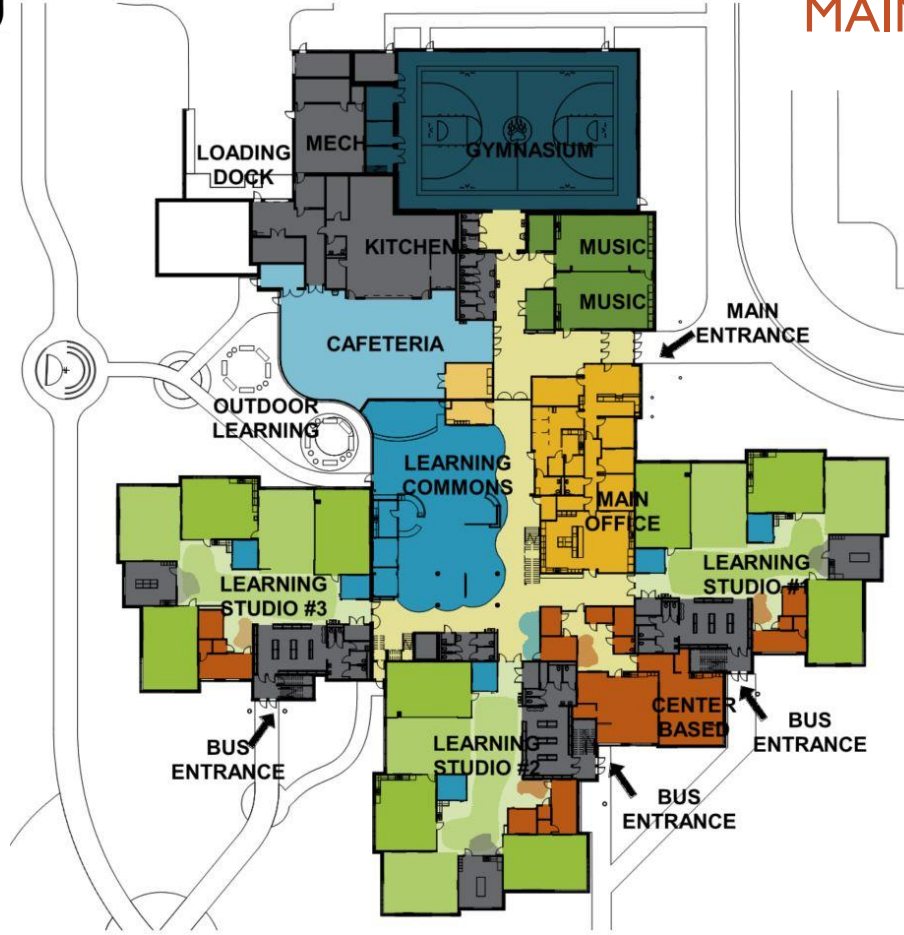




White Bear Lake
Area Schools

NEW ELEMENTARY SCHOOL

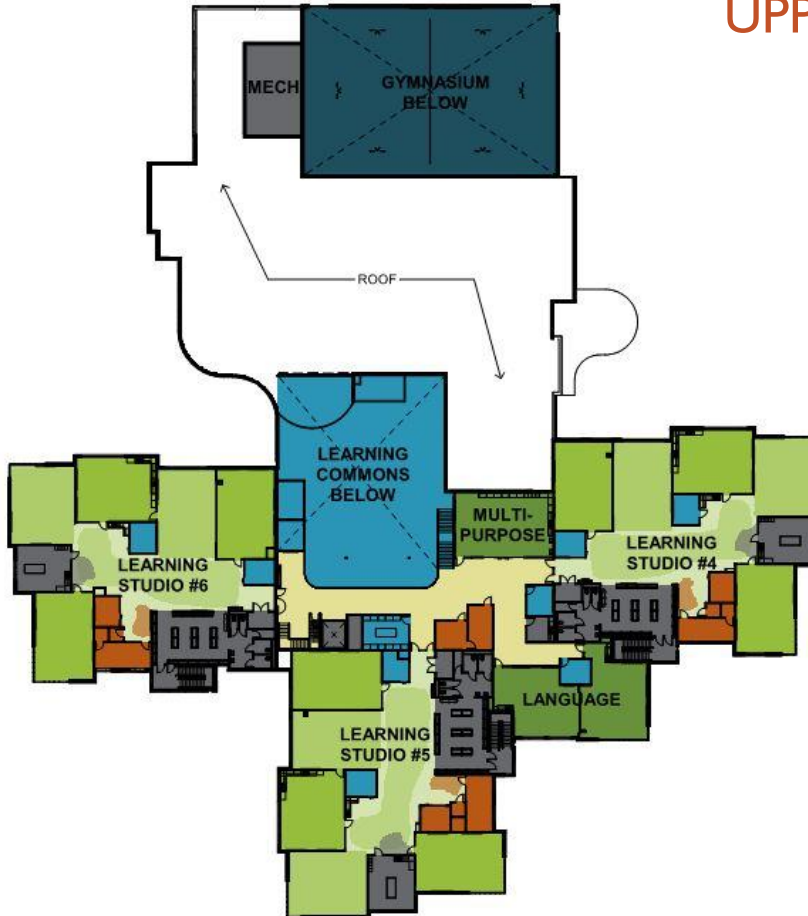
MAIN LEVEL FLOOR PLAN





White Bear Lake
Area Schools

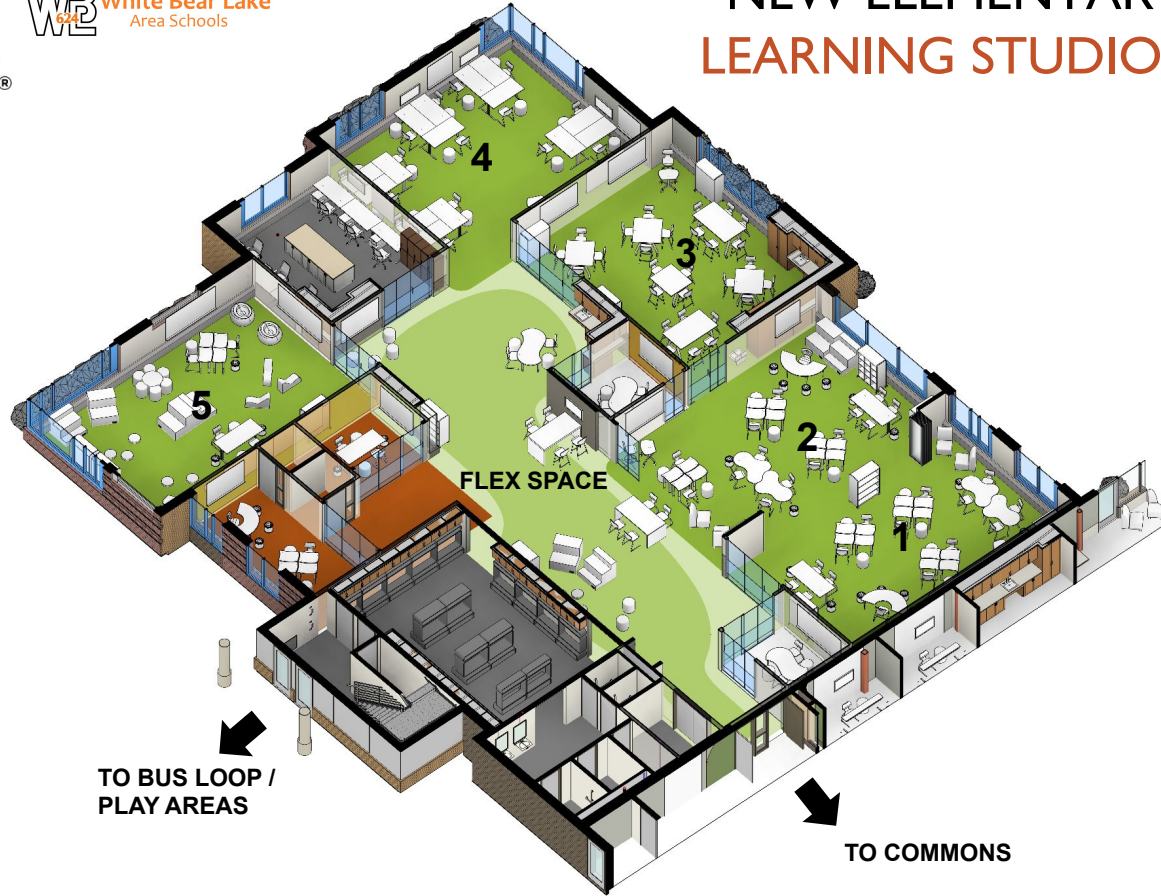
NEW ELEMENTARY SCHOOL UPPER LEVEL FLOOR PLAN





White Bear Lake
Area Schools

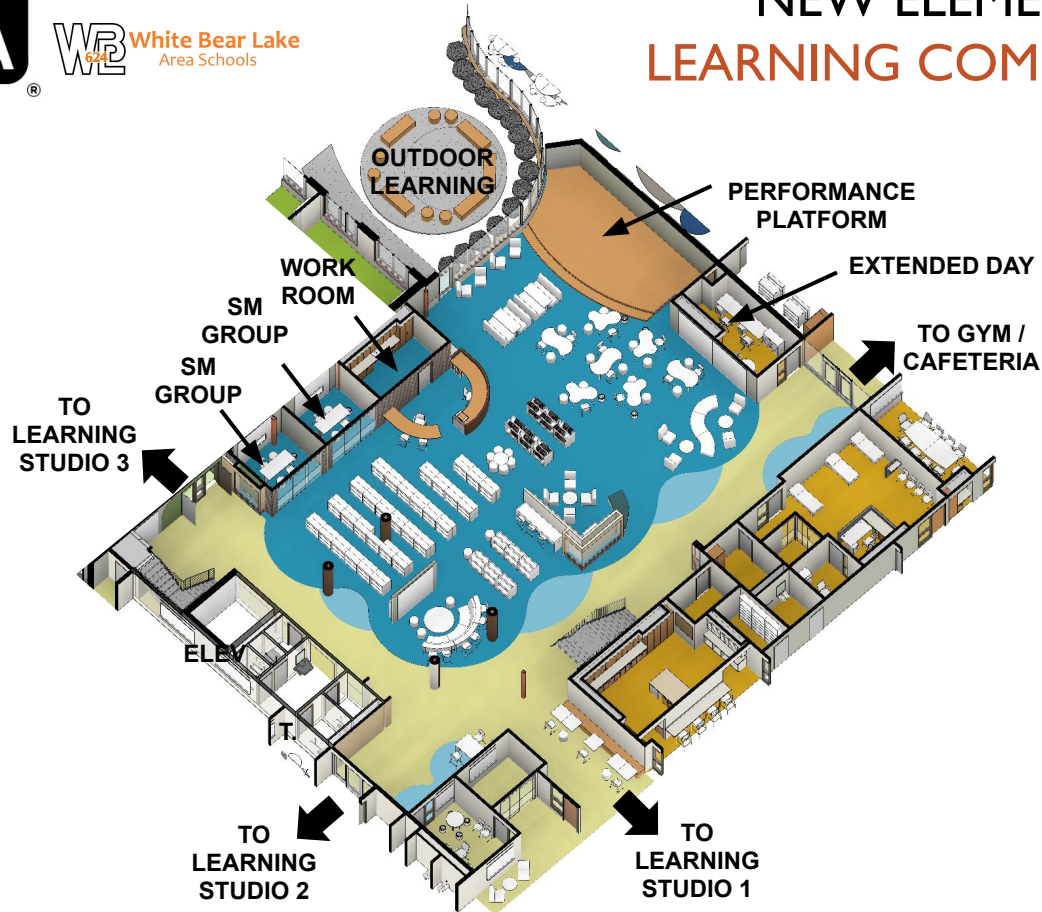
NEW ELEMENTARY SCHOOL LEARNING STUDIO DIAGRAM





White Bear Lake
Area Schools

NEW ELEMENTARY SCHOOL LEARNING COMMONS DIAGRAM





White Bear Lake
Area Schools

NEW ELEMENTARY SCHOOL

MATERIAL INSPIRATION





WB
624 White Bear Lake
Area Schools

NEW ELEMENTARY SCHOOL INTERIOR VIEW



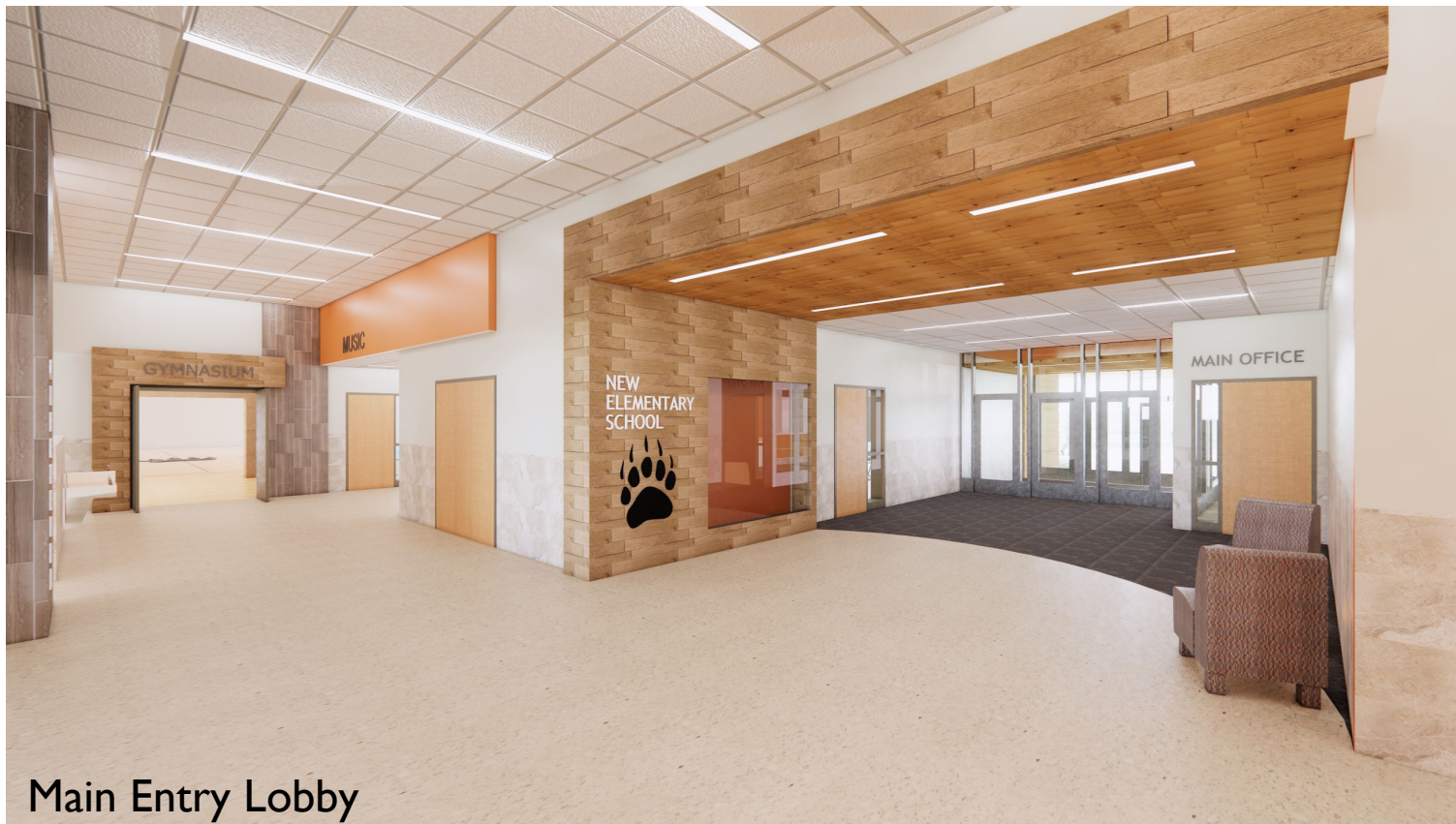
Reception



White Bear Lake
Area Schools

NEW ELEMENTARY SCHOOL

INTERIOR VIEW



Main Entry Lobby



White Bear Lake
Area Schools

NEW ELEMENTARY SCHOOL INTERIOR VIEW



Gymnasium



White Bear Lake
Area Schools

NEW ELEMENTARY SCHOOL INTERIOR VIEW



Cafeteria



White Bear Lake
Area Schools

NEW ELEMENTARY SCHOOL INTERIOR VIEW



Learning Commons from Main Office



White Bear Lake
Area Schools

NEW ELEMENTARY SCHOOL INTERIOR VIEW



Learning Commons from Upper Level Balcony



White Bear Lake
Area Schools

NEW ELEMENTARY SCHOOL

INTERIOR VIEW



Learning Studio Entry



White Bear Lake
Area Schools

NEW ELEMENTARY SCHOOL INTERIOR VIEW



Learning Studio Flex Area



White Bear Lake
Area Schools

NEW ELEMENTARY SCHOOL INTERIOR VIEW



Learning Studio Flex Area



White Bear Lake
Area Schools

NEW ELEMENTARY SCHOOL

EXTERIOR VIEW





White Bear Lake
Area Schools

NEW ELEMENTARY SCHOOL

EXTERIOR VIEW





White Bear Lake
Area Schools

NEW ELEMENTARY SCHOOL

EXTERIOR VIEW





White Bear Lake
Area Schools

NEW ELEMENTARY SCHOOL

EXTERIOR VIEW





White Bear Lake
Area Schools

REFERENDUM PROJECTS UPDATE

NEXT STEPS

Recommendation to Board for Bid Award on October 26, 2020 Meeting:

- Lincoln Elementary (bid opening October 13, 2020)



WHITE BEAR LAKE AREA SCHOOLS



REFERENDUM PROJECTS UPDATE

THANK YOU!



White Bear Lake
Area Schools