

Bond Projects Update

Lake Washington School District



January 2019

Featured Building on Success News

New Support Services Director planning future-ready learning environments

As the number of students in the district approaches 30,000, staff in LWSD Support Services continuously develop plans to house more students while maintaining existing facilities. LWSD receives about 326 maintenance requests each week to fix toilets, light switches, heating/HVAC systems, elevators, downspouts and more.

Leading the team responsible for keeping buildings up and running is the new Director, Support Services, Brian Buck. Buck was previously in the Support Services Associate Director role. Buck was selected for the position last month after Director Forrest Miller's retirement. He began working at LWSD five years ago after working in a similar role at The Boeing Company for more than a decade.



LWSD's growing enrollment – 26 percent in the last decade – continues to have an impact on the district's classroom space. Last summer, the district installed 10 portables at five elementary schools in Kirkland and converted portions of four shared spaces at Lake Washington High School into classrooms.

Buck has a number of large efforts ahead of him including the opening of five construction projects in the fall that were approved by voters in the 2016 bond: Timberline Middle School (the new middle school in Redmond Ridge), rebuilt and enlarged Peter Kirk Elementary and Margaret Mead Elementary Schools, Old Redmond Schoolhouse interior remodel and the first phase of the rebuild and enlargement project at Juanita High School.

"Opening five schools takes a lot of collaboration," Buck said. "Every Student Future Ready is a vision we always carry with us. These new buildings will help students and staff reach their potential both now and in the future."

Report emergency facility issues 24 hours a day

Late-night alarm? Vandalism? Broken window? Anyone, anywhere can report a facilities issue 24 hours a day, 7 days a week, 365 days a year:

- Call InfoCentre toll-free at 1-855-237-4828
- Email: servicedesk@info-centre.com

In Case You Missed It: Building on Success Progress Report and Year-in-Review video



The [Building On Success Progress Report](#) was sent to addresses across the district. It included an overview and progress updates on all eight 2016 bond projects. If you missed it in the mail, be sure to take a look online.



It is with gratitude that we share [this video of the moments that made 2018 a year to remember](#). Thank you to the communities of LWSD for your ongoing support for providing great places for students to learn!

Updates on other 2016 bond projects

Click on a link below to jump to updates for other projects funded by the 2016 bond:

- [Timberline Middle School](#)
- [Juanita High School](#)
- [Margaret Mead Elementary School](#)
- [Peter Kirk Elementary School](#)
- [Old Redmond Schoolhouse](#)
- [Ella Baker Elementary School](#)
- [Clara Barton Elementary School](#)
- [Explorer Community School](#)

Timberline Middle School



- The new middle school at Redmond Ridge has a name — Timberline Middle School. The LWSD School Board approved the school's name during their Dec. 3 meeting.
- The school also has a mascot — the Timberwolves! The School Board approved the school's mascot at their Jan. 14 meeting.
- Wood flooring is installed in the gymnasium.
- Painting in the academic wing is nearly complete.
- Reclaimed wood benches (made from trees removed from the site) were delivered to the school.

Timberline Middle School

Juanita High School



- LWSD Technology staff completed a walkthrough of the building to ensure students will have easy access to district technology.
- Wall framing is complete.
- Insulation and sheet rock installation are beginning.
- Casework installation has begun in the south end of the building.
- Geothermal well installation will wrap up at the end of January.
- Elevator installation will be complete at the end of January.

Juanita High School

Margaret Mead Elementary School



- Exterior framing of the educational wing is underway.
- Interior mechanical, plumbing and fire sprinkler installation is in progress.
- Utility installation occurred over winter break.

Margaret Mead Elementary School

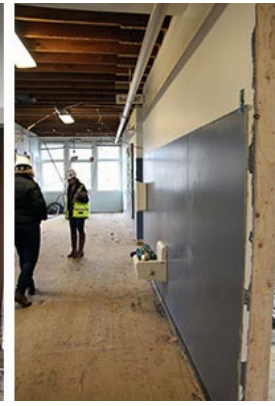
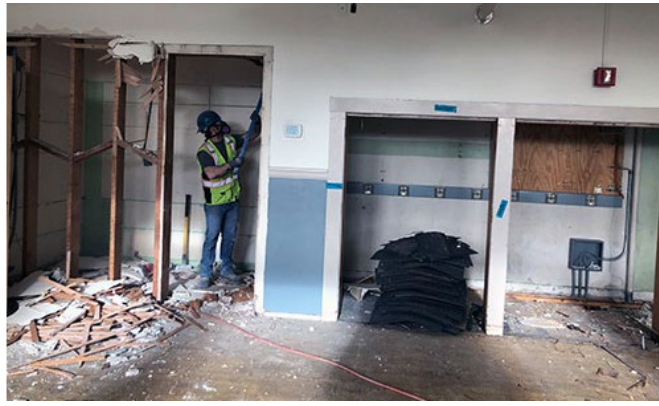
Peter Kirk Elementary School



- Principal Monica Garcia and Superintendent Dr. Jane Stavem walked the construction site.
- Interior mechanical, plumbing and fire sprinkler installation is in progress.
- Gym/Commons exterior framing is in progress.

Peter Kirk Elementary School

Old Redmond Schoolhouse



- Interior demolition has begun.

Old Redmond Schoolhouse

Completed projects



Ella Baker Elementary School

This new school opened in fall 2018 with space for 690 students. The student-centered design incorporates features that conserve natural resources and reduce energy costs. The school is named after Ella Baker, a Civil Rights leader, and focuses on empowering students to be changemakers.

Ella Baker Elementary



Clara Barton Elementary School

The new school opened in fall 2018 with space for 690 students. The student-centered design incorporates features that conserve natural resources and reduce energy costs. The school is named after Clara Barton, who was a teacher before she founded the American Red Cross.

Clara Barton Elementary



Explorer Community School

The school opened in fall 2017. Four innovative and energy-efficient modular classroom buildings replaced aging portable classrooms.

Explorer Community School

Have a question about a bond project? Let's Talk!

Have a question about any of these projects? [Ask us through our "Let's Talk" system.](#) This system allows you to share comments or ask questions to members of our team.



Connect with us!

