

# Bond Projects Update

## Lake Washington School District



July 2019

### Featured Building on Success News

40-day countdown: Builders have first day of school in view



## Countdown to the first day of school

### 2016 Bond Projects Update



The end of the school year marked the beginning of a sprint for builders who are making sure new schools are set to open in 40 days.

At Kirk and Mead elementary schools, old buildings were demolished to make way for playgrounds and playfields. At Juanita High School, demolition of the old building began July 15. Students will attend school in both the new building and in portables for the 2019-20 school year. In fall 2020, the full school will open, and the temporary portables will be removed.

#### One-minute construction time-lapse videos

Construction began on the new middle school at Redmond Ridge two years ago. But you can watch the building rise in one minute with this [Timberline Middle School time-lapse video](#).

#### More videos:

- [Juanita High School time-lapse](#)
- [Peter Kirk Elementary time-lapse](#)
- [Margaret Mead Elementary time-lapse](#)



#### In this issue of Building on Success Bond eNews:

- See photos from the [Timberline Middle School](#) staff tour.
- Exterior concrete masonry is complete at [Peter Kirk Elementary](#) and [Margaret Mead](#)

[Elementary.](#)

- Beams from the old [Juanita High School](#) will have a prominent role in the new school.
- Work continues on [Old Redmond Schoolhouse](#).
- [Financial Update](#).

---

## Slideshow: Teachers and staff tour Timberline Middle School



For most **Timberline Middle School** teachers and staff, June 6 was their first opportunity to set foot inside the new middle school at Redmond Ridge. Staff enjoyed learning about architectural features of the school: The Learning Forest wall uses wood from local tree species, such as Douglas fir and Sitka spruce. Other walls in the school draw inspiration from mathematical ratios and iambic pentameter.

The new middle school is expected to be a central focus for the Redmond Ridge community. Architects designed spaces in the new middle school, such as the commons, library, gymnasium and restrooms, with the needs of the community in mind.

Architects also led staff through the music classrooms, general classrooms, science labs and shared spaces. Furniture is arriving, and teachers will start setting up their classrooms in August. Matthew Bissen, an architect for McGranahan Architects, told teachers during the tour, "The real design starts when you make it your own."

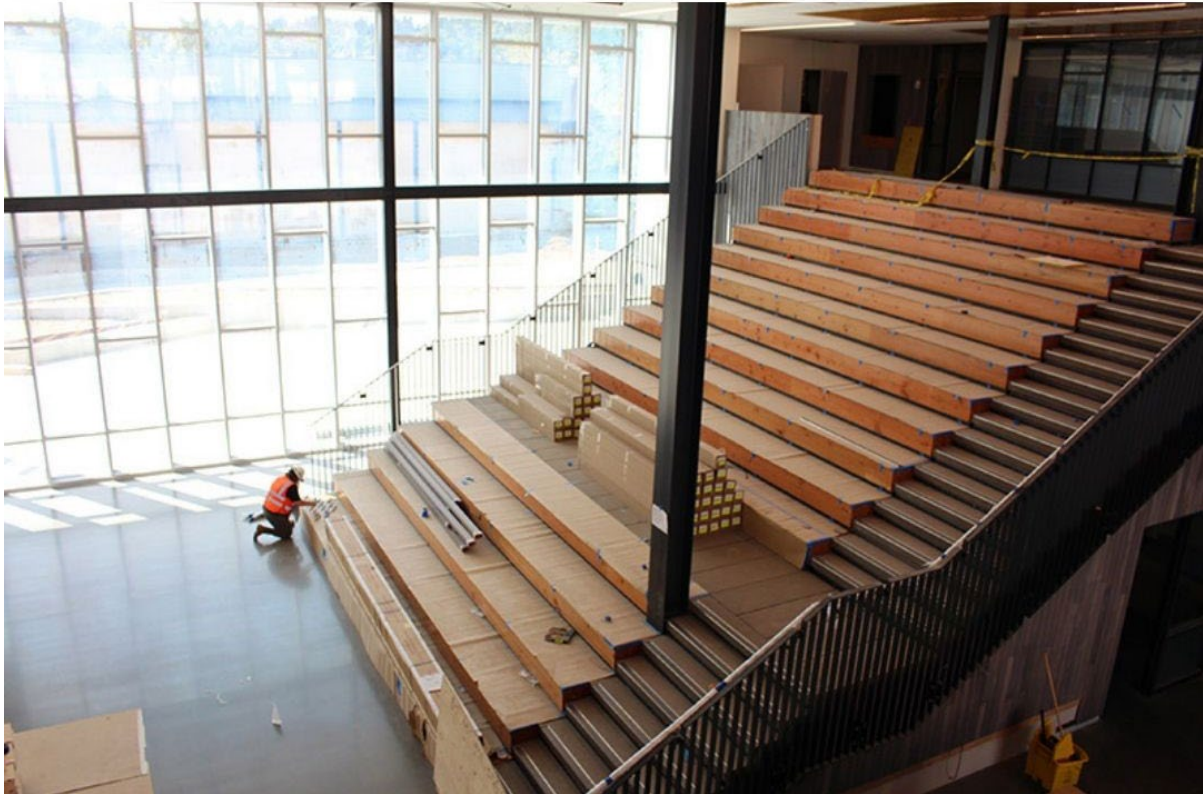
[See more photos from the tour.](#)

Timberline Middle School

---

## Juanita High School





One of the first things visitors to the new Juanita High School will notice is the staircase leading from the commons on the ground floor to the library on the second floor. In summer 2018, about 15,000 linear feet of wooden beams were salvaged from the old school to be incorporated into the staircase.

#### **Construction updates:**

- Teachers have moved out of the old building. Demolition began in mid-July.
- Classrooms are receiving furniture.
- Theater seating is installed.
- Classroom technology installation has begun.

**Juanita High School**

**Peter Kirk Elementary**



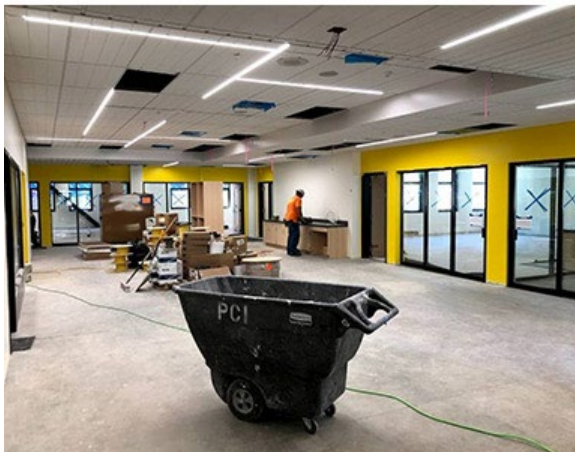
- Exterior concrete masonry is complete. Exterior metal panels are in progress and will be completed this month.
- Casework, flooring and wall coverings are nearly complete.
- Demolition of the existing school is complete.

**Students and alumni bid farewell to old buildings:** Students and alumni of all ages dropped by Kirk on June 6 to say farewell to the old building. [See photos from the farewell event.](#)

## Peter Kirk Elementary School

## Margaret Mead Elementary





- Concrete masonry is complete. Exterior metal panels will be complete this month.
- Light fixtures, ceiling tiles and casework have been installed.
- Painting is complete.
- Demolition of the existing school is complete.

**Students and alumni bid farewell to old buildings:** Students and alumni of all ages dropped by Mead on June 6 to say farewell to the old building. [See photos from the farewell event.](#)

## Margaret Mead Elementary School

## Old Redmond Schoolhouse



In May, LWSD announced that additional maintenance is needed on Old Redmond Schoolhouse. This includes rooftops, exterior brick and mortar, and window casings. Work will begin this summer.

Old Redmond Schoolhouse is scheduled to open in fall 2020. The preschool programs that were scheduled to move to Old Redmond Schoolhouse will remain at Dickinson Elementary for the 2019-20 school year.

As part of this project, 49% of the building interior is being remodeled for preschool classrooms. The remaining area, which includes the gym, kiln room and studio, is not used for preschool. These spaces will be leased to the City of Redmond for community programs.

### Old Redmond Schoolhouse

## Completed projects



### Ella Baker Elementary School

This new school opened in fall 2018 with space for 690 students. The student-centered design incorporates features that conserve natural resources and reduce energy costs. The school is named after Ella Baker, a Civil Rights leader, and focuses on empowering students to be changemakers.

### Ella Baker Elementary

### Clara Barton Elementary School

The new school opened in fall 2018 with space for 690 students. The student-centered design incorporates features that conserve natural resources and reduce energy costs. The school is named after Clara Barton,





who was a teacher before she founded the American Red Cross.

Clara Barton Elementary



### Explorer Community School

The school opened in fall 2017. Four innovative and energy-efficient modular classroom buildings replaced aging portable classrooms.

Explorer Community School

## Financial Update

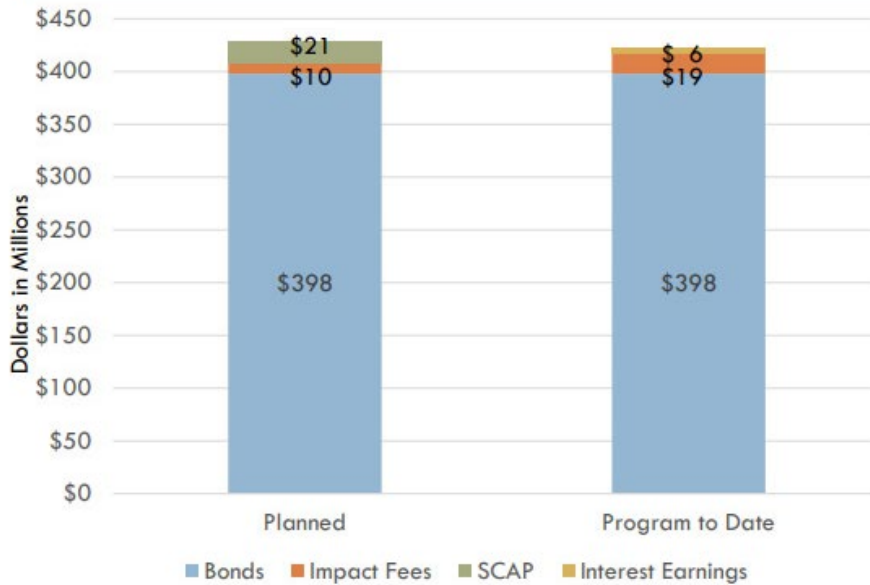
### All 2016 bonds have been sold

The April 2016 voter-approved bonds of \$398 million have all been sold: \$165 million was sold in August 2016; \$165 million in November 2017; and the final \$68 million in November 2018. LWSD bonds receive the highest credit rating assigned to any school district in the state. This helps keep interest rates low.

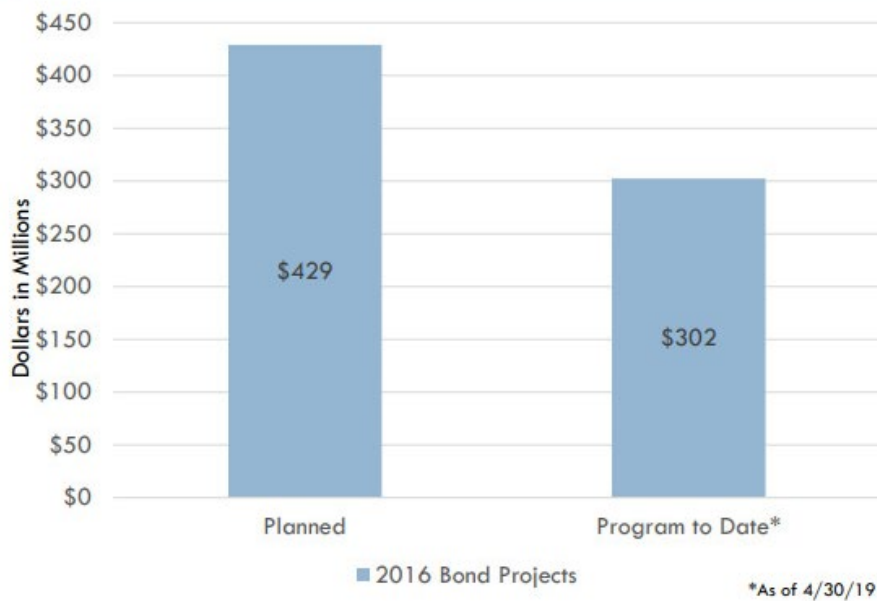
The Office of the Superintendent of Public Instruction (OSPI) approved \$21 million of State Construction Assistance Program (SCAP) funds for the Peter Kirk Elementary, Margaret Mead Elementary and Juanita High School rebuild and enlarge projects. The district anticipates receiving these funds over the next two years as projects are completed.

The charts below show planned 2016 bond program revenues and expenditures compared to current receipts and spending. Of the total planned expenditures of \$429 million, the district has spent \$302 million.

## Program Revenues



## Program Expenditures



### Have a question about a bond project? Let's Talk!

Have a question about any of these projects? [Ask us through our "Let's Talk" system](#). This system allows you to share comments or ask questions to members of our team.

Let's Talk!

### Connect with us!





