

Bond Projects Update

Lake Washington School District



November 2018

Featured projects

First phase of Juanita High School nearly enclosed for winter



Students at Juanita High School are starting to see what their new school will look like. Steel construction for the first phase of the school is complete and the building will be fully enclosed by the end of November. The exterior brick veneer will be complete by the end of December.

Phase one of the new school (73 percent of the building) will open in September 2019. It will include the administrative wing, science classrooms, special education classrooms, general classrooms, the library and cafeteria/commons area. The Performing Arts Center will open in early 2020.

The final phase of the new school (the remaining 27 percent) will open in fall 2020.

Drywall installation has begun and painters are preparing interior walls for painting. [Watch the video.](#)

[Juanita High School](#)

[Ella Baker Elementary students “Give Light” during Grand Opening Ceremony](#)



“One of the most important jobs...” began Dr. Jane Stavem, Superintendent. “Is to be a changemaker?” a student in the front asked earnestly. Dr. Stavem smiled and agreed with the student that changemakers are important – especially those who choose to teach!

Empowering students to be changemakers was a common theme during the Grand Opening and Ribbon Cutting Ceremony at Ella Baker Elementary School on Oct. 5. Ella Baker was a leader and mentor during the Civil Rights movement.

Teachers joined fifth-graders and 4/5 Quest students in singing, “Together We Can Change the World” by Mark Shepard. The whole school echoed a famous quote from Baker: “Give light and people will find the way.” The quote was put to music by Greg Artzner and Terry Leonino in the song “Give Light.”

Principal Kim Bilanko and Superintendent Stavem cut the ceremonial ribbon.

District staff in attendance were: Superintendent Dr. **Jane Stavem**, Deputy Superintendent **Jon Holmen**, Associate Superintendent **Matt Manobianco**, Associate Superintendent **Mike Van Orden**, Associate Superintendent **Barbara Posthumus**, Director of School Support - Redmond Learning Community **Sue Anne Sullivan**, Director of Support Services **Forrest Miller**, and Director of Communications **Shannon Parthemer**.

Community representatives included: Washington State Sen. **Manka Dhingra**, School Board President **Siri Bliesner**, School Board Vice President **Mark Stuart**, School Board Member **Cassandra Sage**, Executive Director of Lake Washington Schools Foundation **Larry Wright**, Lake Washington PTSA Council President **Mindy Lincicome**, and **Chris Ricketts** and **Kevin LeClair** from King County.

Members of the project team included: **Lisa Johnson**, **Noah Greenberg** and **Miranda Karli** from DLR Group; **Andrew Johnson**, **Matt McKinney** and **Bill Michie** from Lydig Construction; and Project Manager **Ethel Vural** and **Steve Murakami** from OAC Services.

[Watch a slideshow](#) of photos from the ribbon cutting ceremony and open house.

[Ribbon Cutting Highlight Video](#) (2 minutes) | [Facebook Live Full Video](#) (37 minutes)

Ella Baker Elementary Updates

Lessons from Clara Barton's time as a teacher still relevant today



Most people know Clara Barton as the founder of the American Red Cross. But before she became the “Angel of the Battlefield,” Barton found her calling as a teacher.

Lake Washington School District (LWSD) School Board President Siri Bliesner highlighted Barton's early life of teaching during the Grand Opening ceremony at Clara Barton Elementary School on October 11. While teaching in Hightstown, New Jersey, Barton learned that the neighboring town of Bordentown had no free public schools. She persuaded the town to open a one-room school that grew from six students on its first day to a building of 600 students the following year.

Barton's school grew with the support of her community. LWSD is also thankful to have community support behind its schools. Funding from the 2016 bond measure paid for this new school, which has a capacity of 690 students.

Principal Karen Barker and Superintendent Dr. Jane Stavem cut the ceremonial ribbon.

District staff in attendance were: Superintendent Dr. **Jane Stavem**; Deputy Superintendent **Jon Holmen**; Associate Superintendent **Matt Manobianco**; Associate Superintendent **Mike Van Orden**; Associate Superintendent **Barbara Posthumus**; Director of School Support **Sue Anne Sullivan**; Director of Support Services **Forrest Miller**; Associate Director of Support Services **Brian Buck**; and Director of Communications **Shannon Parthemer**.

Community representatives included: U.S. Rep. **Suzan DelBene**; Washington State Sen. **Manka Dhingra**; Redmond City Council President **Angela Birney**; Director of Redmond Parks and Recreation **Maxine Whattam**; School Board President **Siri Bliesner**; School Board Vice President **Mark Stuart**; School Board Member **Cassandra Sage**; Lake Washington Schools Foundation Executive Director **Larry Wright**; and Lake Washington PTSA Council President **Mindy Lincicome**.

Members of the project team included: **Ron Harpel** and **Andrew Cottrill** from BLRB Architects; **Robert Lund**, **Jason Limp**, **Mark Ronish** from BNBuilders; Project Manager **Andrew Sahl** and **Dan Chandler** from OAC Services; and **Gid Palmer** from the Design and Construction Advisory Committee also attended.

[Watch a slideshow](#) of photos from the ribbon cutting ceremony and open house.

[Ribbon Cutting Highlight Video](#) (2 minutes) | [Facebook Live Full Video](#) (32 minutes)

Clara Barton Elementary Updates

Steel assembly complete at Peter Kirk Elementary



Students at Peter Kirk Elementary School sang their school song to celebrate a construction milestone on Nov. 6. The students watched as the last steel beam was hoisted to the top of their new school.

Construction workers, students and staff had a chance to sign the ceremonial beam during recess earlier in the day.

On either side of the beam was an evergreen tree and an American flag. Placing a tree or branch when topping out a building is a longtime tradition. A similar tradition can be traced back to ancient Scandinavia. The Scandinavians placed a small tree or branch with the last beam to celebrate nature and the trees that were used in their buildings. Today, construction workers use the ceremony to celebrate a safe construction site. [Watch the video.](#)

Peter Kirk Elementary School

Updates on other 2016 bond projects

Click on a link below to jump to updates for other projects funded by the 2016 bond:

- [New Middle School - Redmond Ridge](#)
- [Margaret Mead Elementary School](#)
- [Old Redmond Schoolhouse](#)
- [Explorer Community School](#)

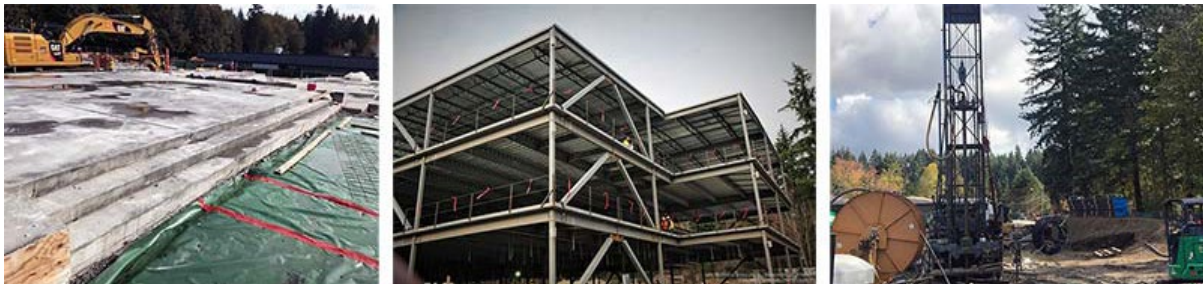
New Middle School - Redmond Ridge



- The planning team of teachers voted on school colors: green, white and black.
- Staff met about 200 students and families during an informational meeting on Oct. 20. [The school posted photos on its Facebook page from the event.](#) The process to name the school and choose a mascot has begun.
- Exterior of the classroom wing is complete.
- Pervious concrete has been poured around the track, the track surface has been installed and the field is seeded.
- Cabinets are being installed in classrooms.
- Painting is complete in the gymnasium and scoreboards were installed.
- Carpet installation began in the classroom wing.
- Two kilns were delivered to the art room.

New Middle School - Redmond Ridge

Margaret Mead Elementary School



- Steel installation on the three-story building is complete.
- Work is beginning to enclose and weatherproof the building before winter.
- Concrete for the stage has been placed in the commons.
- Drilling is in progress for geothermal wells. This technology is a sustainable way to maintain comfortable temperatures in the school. Water in pipes warms or cools underground where the temperatures stay a comfortable 55 degrees year-round. The water returns to the surface where the heat is extracted to help control the temperature inside the school.

Margaret Mead Elementary School

Old Redmond Schoolhouse

- The contractor, Lydig Construction, has been selected for this project.
- Construction is expected to begin in November.



Old Redmond Schoolhouse

Completed projects



Explorer Community School

The school opened in fall 2017. Four innovative and energy-efficient modular classroom buildings replaced aging portable classrooms.

Explorer Community School

Have a question about a bond project? Let's Talk!

Have a question about any of these projects? [Ask us through our "Let's Talk" system.](#) This system allows you to share comments or ask questions to members of



our team.

Connect with us!

